

EXHIBIT 1059

U.S. PATENT NO. 5,773,810 TO HUSSEY *et al.*

("the '810 Patent)

TRW Automotive U.S. LLC: EXHIBIT 1059
PETITION FOR *INTER PARTES* REVIEW
OF U.S. PATENT NUMBER 8,599,001
IPR2015-00436



US005773810A

United States Patent [19]
Hussey et al.

[11] **Patent Number:** **5,773,810**
[45] **Date of Patent:** **Jun. 30, 1998**

- [54] **METHOD FOR GENERATING REAL TIME DEGREE OF FOCUS SIGNAL FOR HANDHELD IMAGING DEVICE**
- [75] Inventors: **Robert M. Hussey**, Liverpool; **Andrew Longacre, Jr.**, Skaneateles, both of N.Y.
- [73] Assignee: **Welch Allyn, Inc.**, Skaneateles Falls, N.Y.
- [21] Appl. No.: **625,111**
- [22] Filed: **Mar. 29, 1996**
- [51] **Int. Cl.**⁶ **G06K 7/10**
- [52] **U.S. Cl.** **235/472; 250/201.7; 235/462**
- [58] **Field of Search** **235/462, 472, 235/454; 250/201.7**

4,877,949	10/1989	Daneilson et al.	235/462
4,920,255	4/1990	Gabeler	235/472
5,003,165	3/1991	Sarfati et al.	250/201.7
5,420,409	5/1995	Longacre, Jr. et al.	235/462

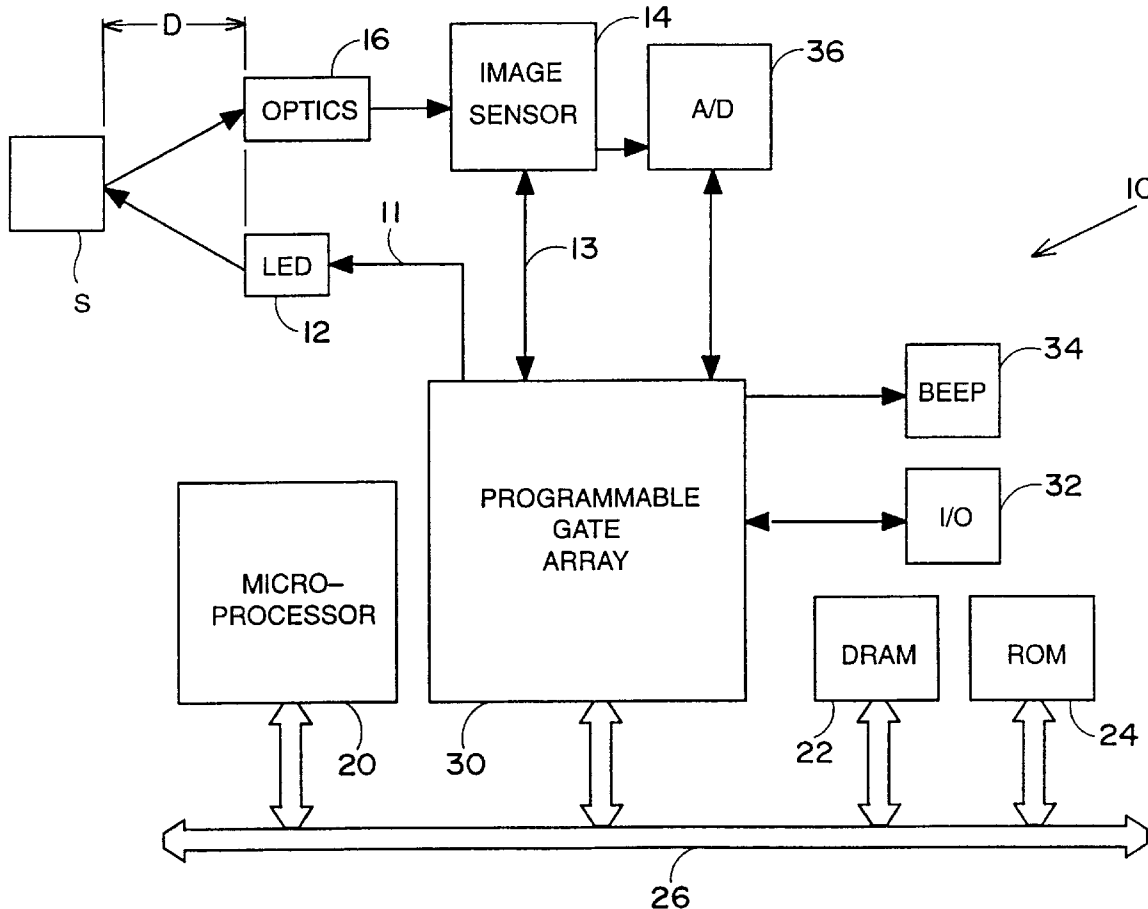
Primary Examiner—F. L. Evans
Attorney, Agent, or Firm—Wall Marjama & Bilinski

[57] **ABSTRACT**

A method for generating, substantially in real time, a user perceptible indication of the degree to which the distance between a handheld imaging device and a target object approximates the in-focus distance therebetween. A stored image of the target object is sampled, in accordance with a pattern of sampling addresses, to determine the magnitude of the slopes of the transitions of the stored image. The stored image is also sampled to determine the contrast value of the stored image. The highest magnitude slope values and the image contrast value are combined to produce a focus metric signal that is indicative of the degree to which the imaging device approximates an in-focus condition. The focus metric signal is then used to generate a user perceptible signal that can be utilized by an operator to move the imaging device toward its in-focus distance.

- [56] **References Cited**
- U.S. PATENT DOCUMENTS**
- 4,578,571 3/1986 Williams 235/472
- 4,818,886 4/1989 Drucker 235/462
- 4,831,275 5/1989 Drucker 235/462

50 Claims, 5 Drawing Sheets



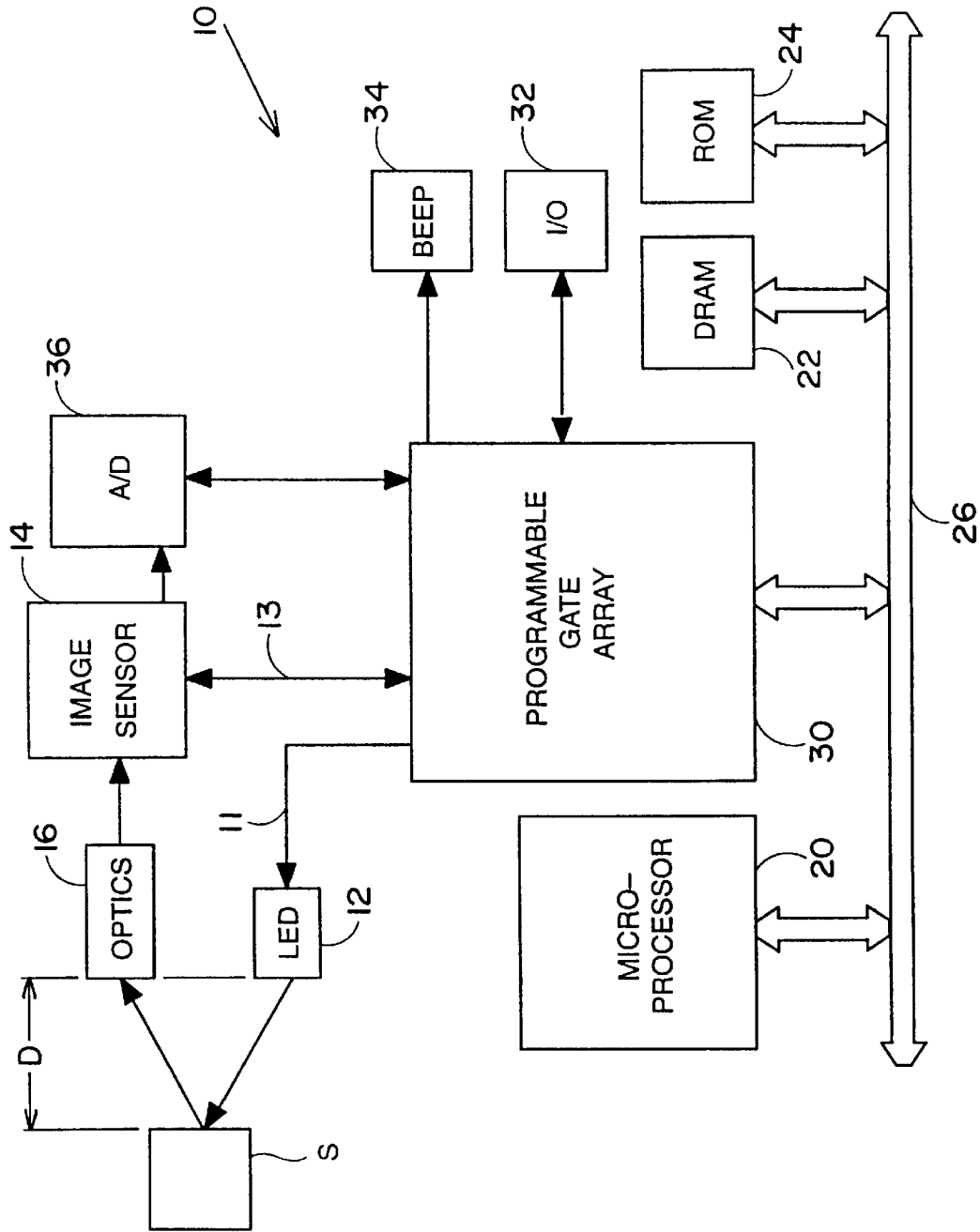


FIG. 1

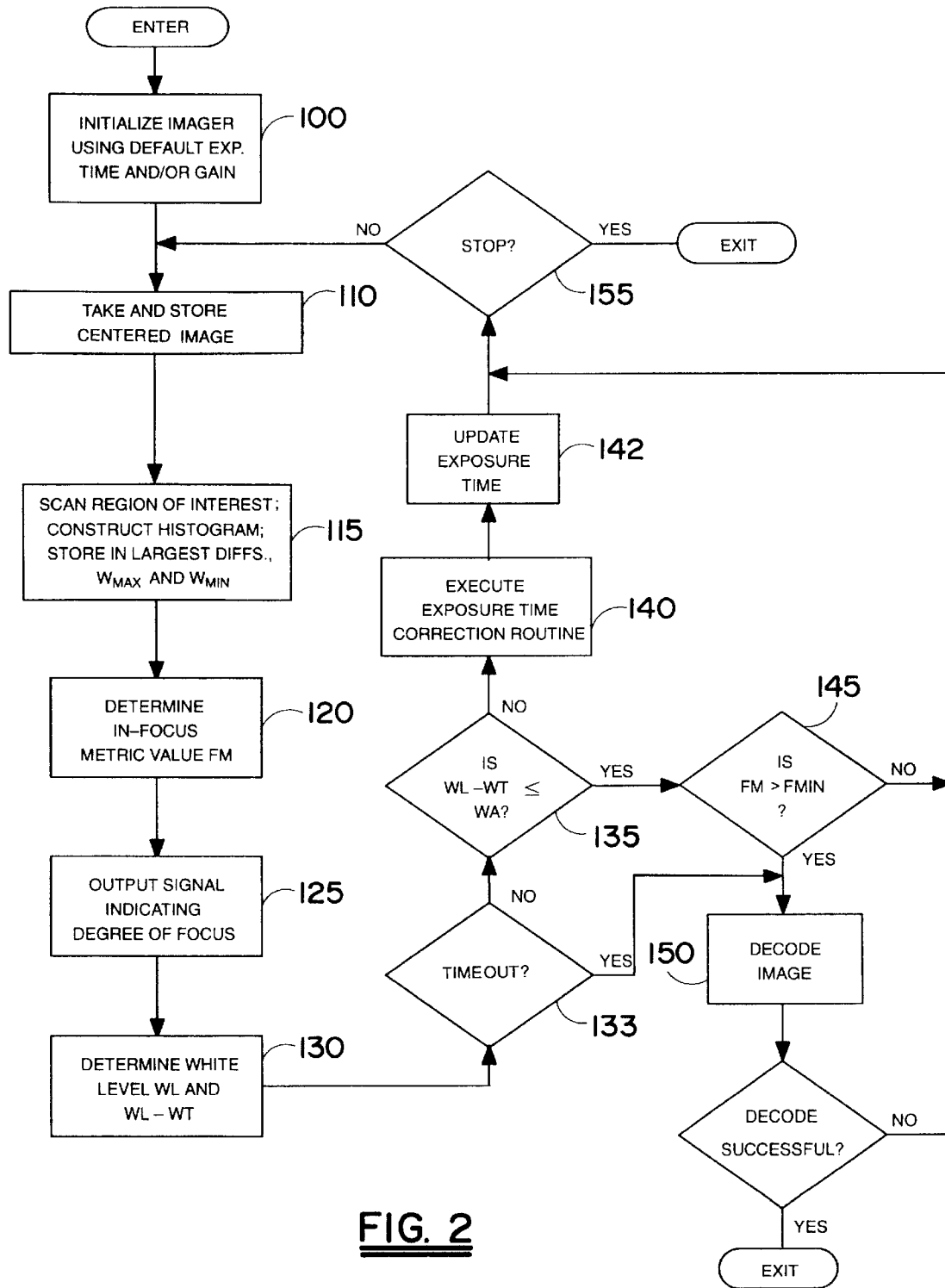


FIG. 2

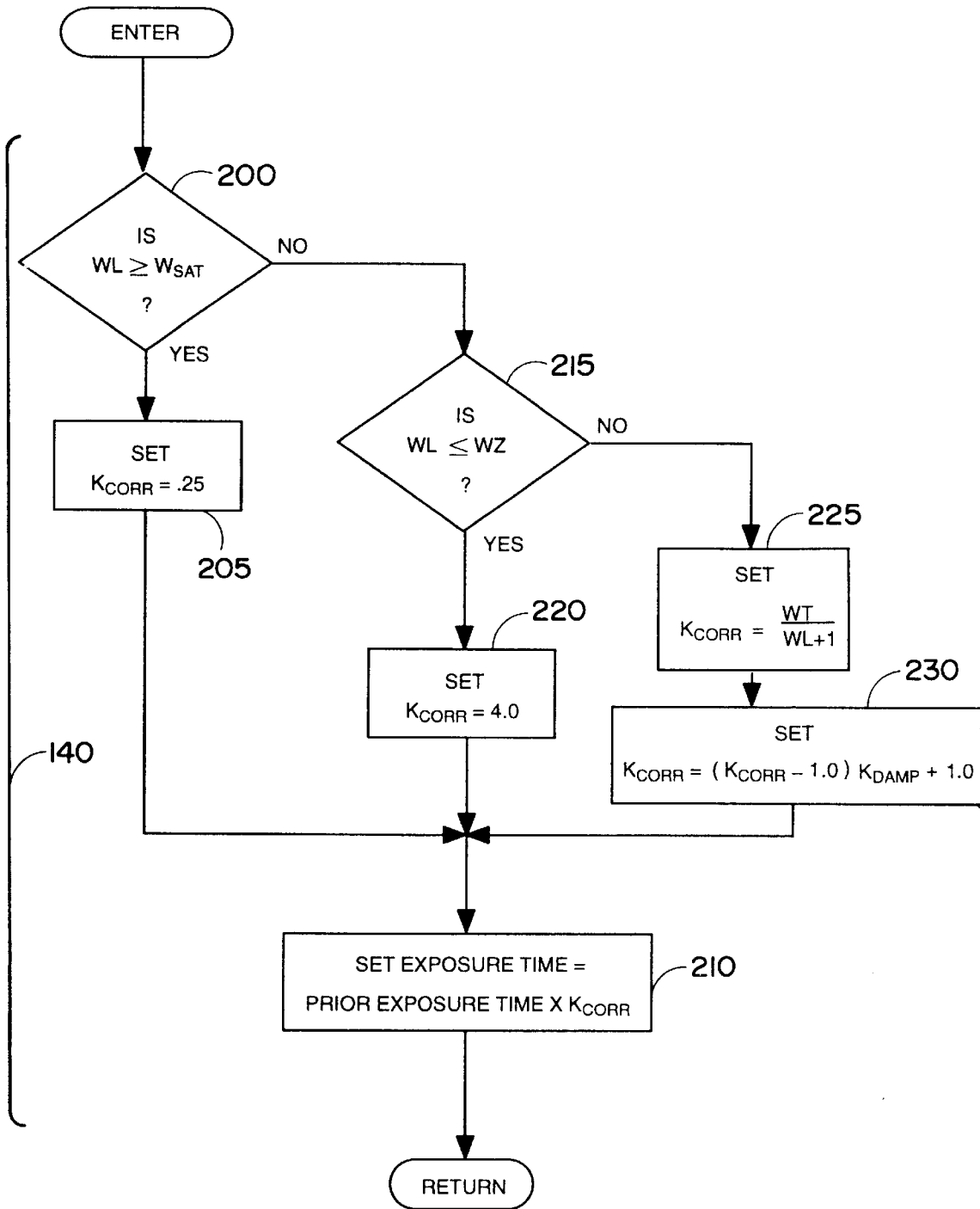


FIG. 3

Explore Litigation Insights

Docket Alarm provides insights to develop a more informed litigation strategy and the peace of mind of knowing you're on top of things.

Real-Time Litigation Alerts



Keep your litigation team up-to-date with **real-time alerts** and advanced team management tools built for the enterprise, all while greatly reducing PACER spend.

Our comprehensive service means we can handle Federal, State, and Administrative courts across the country.

Advanced Docket Research



With over 230 million records, Docket Alarm's cloud-native docket research platform finds what other services can't. Coverage includes Federal, State, plus PTAB, TTAB, ITC and NLRB decisions, all in one place.

Identify arguments that have been successful in the past with full text, pinpoint searching. Link to case law cited within any court document via Fastcase.

Analytics At Your Fingertips



Learn what happened the last time a particular judge, opposing counsel or company faced cases similar to yours.

Advanced out-of-the-box PTAB and TTAB analytics are always at your fingertips.

API

Docket Alarm offers a powerful API (application programming interface) to developers that want to integrate case filings into their apps.

LAW FIRMS

Build custom dashboards for your attorneys and clients with live data direct from the court.

Automate many repetitive legal tasks like conflict checks, document management, and marketing.

FINANCIAL INSTITUTIONS

Litigation and bankruptcy checks for companies and debtors.

E-DISCOVERY AND LEGAL VENDORS

Sync your system to PACER to automate legal marketing.