



[54] INPUT SYSTEM INCLUDING RESISTANCE FILM TOUCH PANEL AND PUSHED POSITION DETECTING DEVICE

4,636,582 1/1987 Moriwaki et al. 178/18

[75] Inventors: Hisao Itaya, Moriyama; Kazuhiko Akebi, Kurita; Minoru Okabe; Satoru Nakagawa, both of Moriyama, all of Japan

Primary Examiner—Donald J. Yusko
Assistant Examiner—Robert Gray
Attorney, Agent, or Firm—Armstrong & Kubovcik

[73] Assignee: Gunze Limited, Ayabe, Japan

[21] Appl. No.: 614,410

[22] Filed: Nov. 16, 1990

[30] Foreign Application Priority Data

Dec. 28, 1989 [JP] Japan 1-340758
Mar. 22, 1990 [JP] Japan 2-30219[U]

[51] Int. Cl.⁵ H03K 17/94

[52] U.S. Cl. 341/20; 178/18; 340/706

[58] Field of Search 341/20, 22, 24, 25, 341/26; 178/18, 19, 20; 340/706, 712; 338/99, 114; 382/3, 4

[56] References Cited

U.S. PATENT DOCUMENTS

3,885,097	5/1975	Pobgee	178/18
4,149,029	4/1979	Pobgee	178/18
4,571,454	2/1986	Tamaru et al.	178/18
4,571,577	2/1986	Taupin et al.	178/18

[57] ABSTRACT

An input system including a resistance film touch panel and a pushed position detecting device for detecting two-dimensional coordinates of a pushed position of a touch panel based on surface resistance values of resistance films, the system comprising a pair of insulating base layers opposed to each other with a certain distance therebetween; a spacer provided between the insulating base layers for keeping the layers apart but for allowing the layers to approach each other when an external force is applied to one of the layers; a first resistance film extended in first and second directions and provided on an inner surface of one of the layers, the first and second directions crossing each other perpendicularly and the first resistance film having outer connecting electrodes on both ends thereof along the second direction; and a plurality of second resistance films provided on an inner surface of the other of the layers, the second resistance films each being a lengthy strip extended in a direction crossing the second direction and having first and second outer connecting electrodes at both ends thereof.

9 Claims, 12 Drawing Sheets

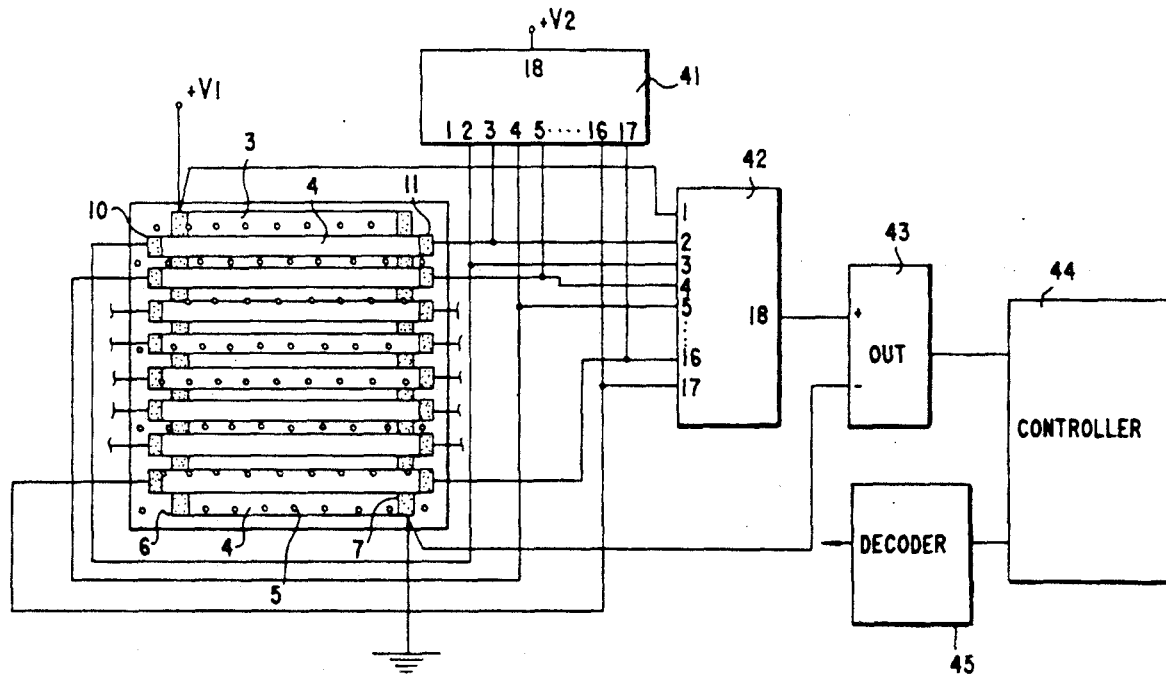


Fig. 1 PRIOR ART

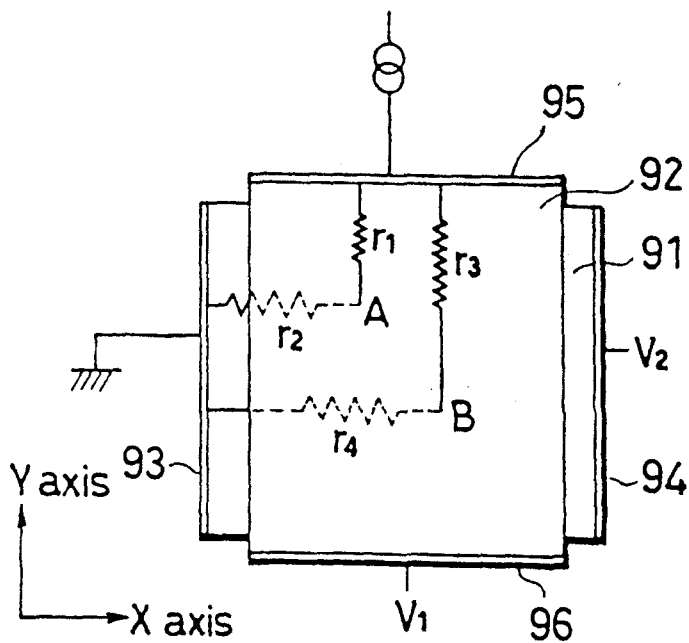


Fig. 2 PRIOR ART

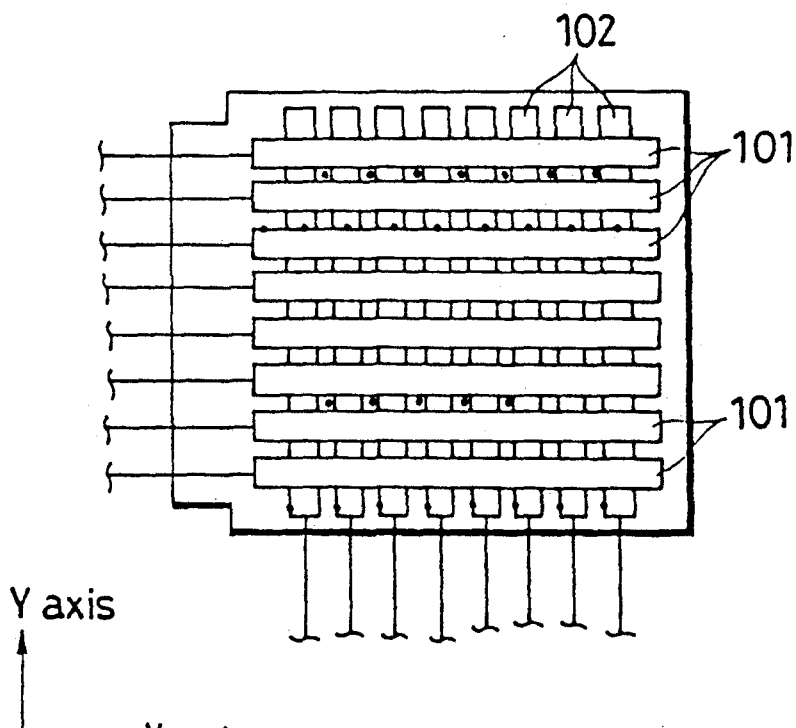


Fig.3

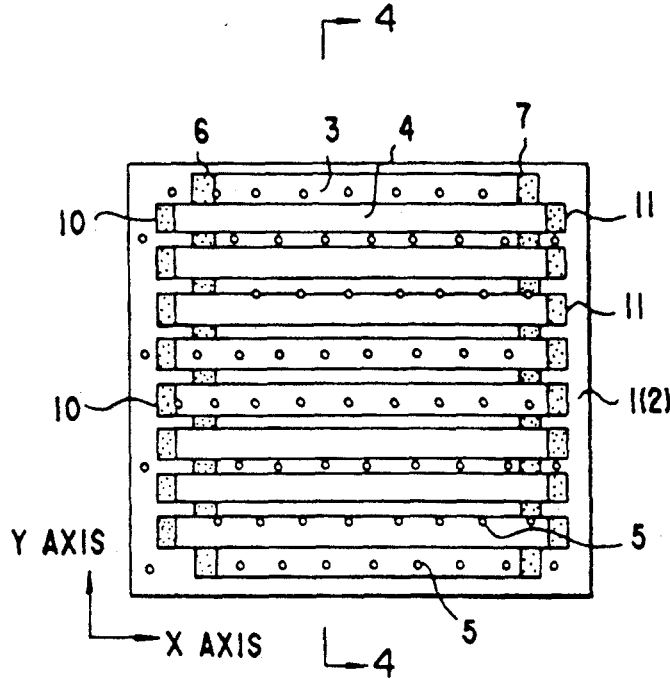


Fig.4

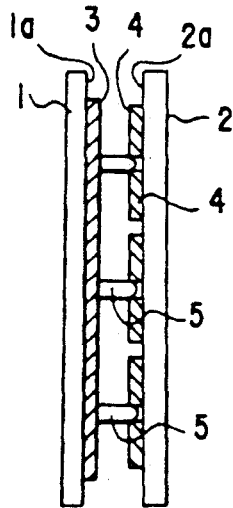


Fig.5a

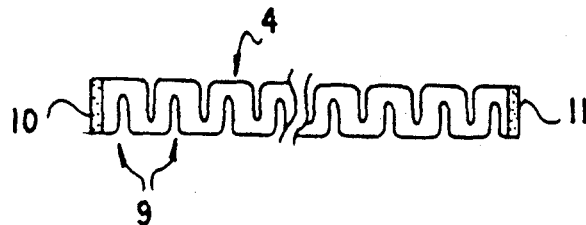
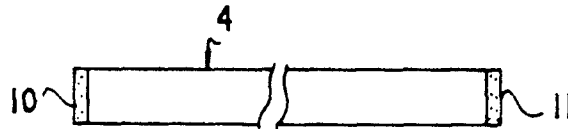
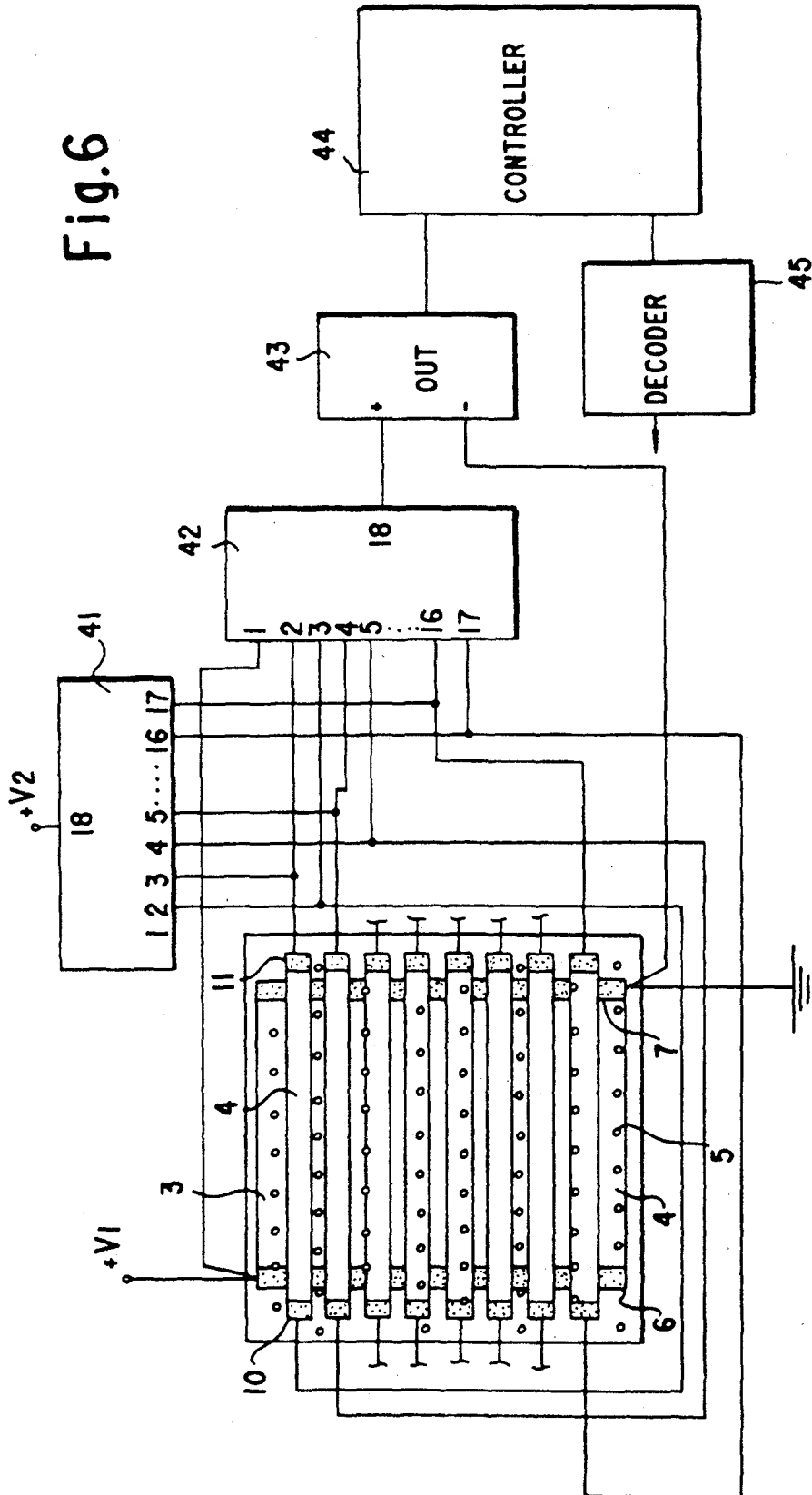


Fig. 5b

Fig.6



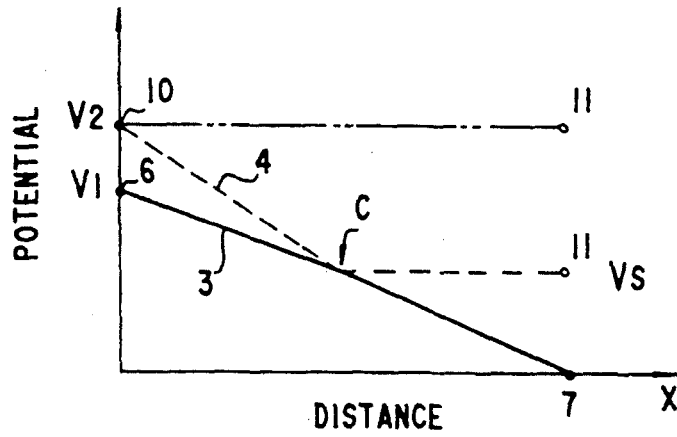


Fig. 7a

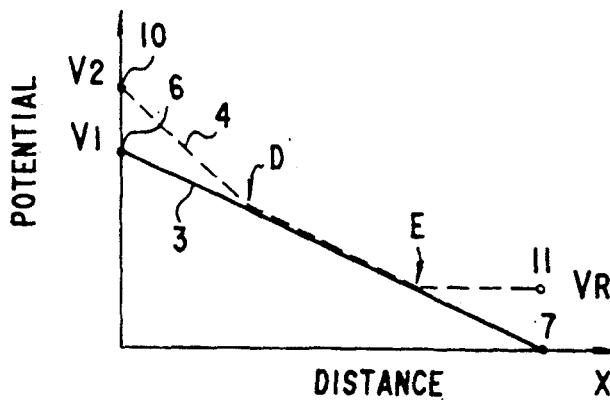


Fig. 7b

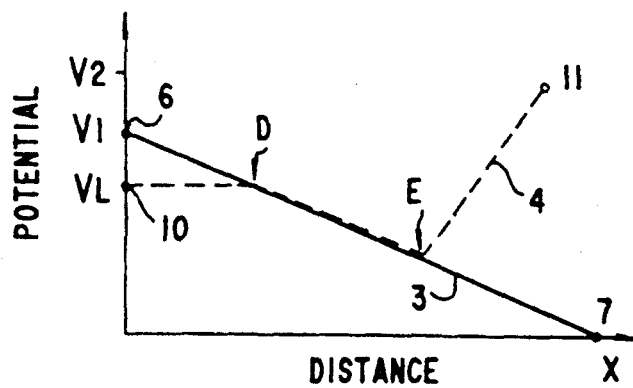


Fig. 7c

Explore Litigation Insights

Docket Alarm provides insights to develop a more informed litigation strategy and the peace of mind of knowing you're on top of things.

Real-Time Litigation Alerts



Keep your litigation team up-to-date with **real-time alerts** and advanced team management tools built for the enterprise, all while greatly reducing PACER spend.

Our comprehensive service means we can handle Federal, State, and Administrative courts across the country.

Advanced Docket Research



With over 230 million records, Docket Alarm's cloud-native docket research platform finds what other services can't. Coverage includes Federal, State, plus PTAB, TTAB, ITC and NLRB decisions, all in one place.

Identify arguments that have been successful in the past with full text, pinpoint searching. Link to case law cited within any court document via Fastcase.

Analytics At Your Fingertips



Learn what happened the last time a particular judge, opposing counsel or company faced cases similar to yours.

Advanced out-of-the-box PTAB and TTAB analytics are always at your fingertips.

API

Docket Alarm offers a powerful API (application programming interface) to developers that want to integrate case filings into their apps.

LAW FIRMS

Build custom dashboards for your attorneys and clients with live data direct from the court.

Automate many repetitive legal tasks like conflict checks, document management, and marketing.

FINANCIAL INSTITUTIONS

Litigation and bankruptcy checks for companies and debtors.

E-DISCOVERY AND LEGAL VENDORS

Sync your system to PACER to automate legal marketing.