

Figure 1. SOUND.WAV, time-domain representation.

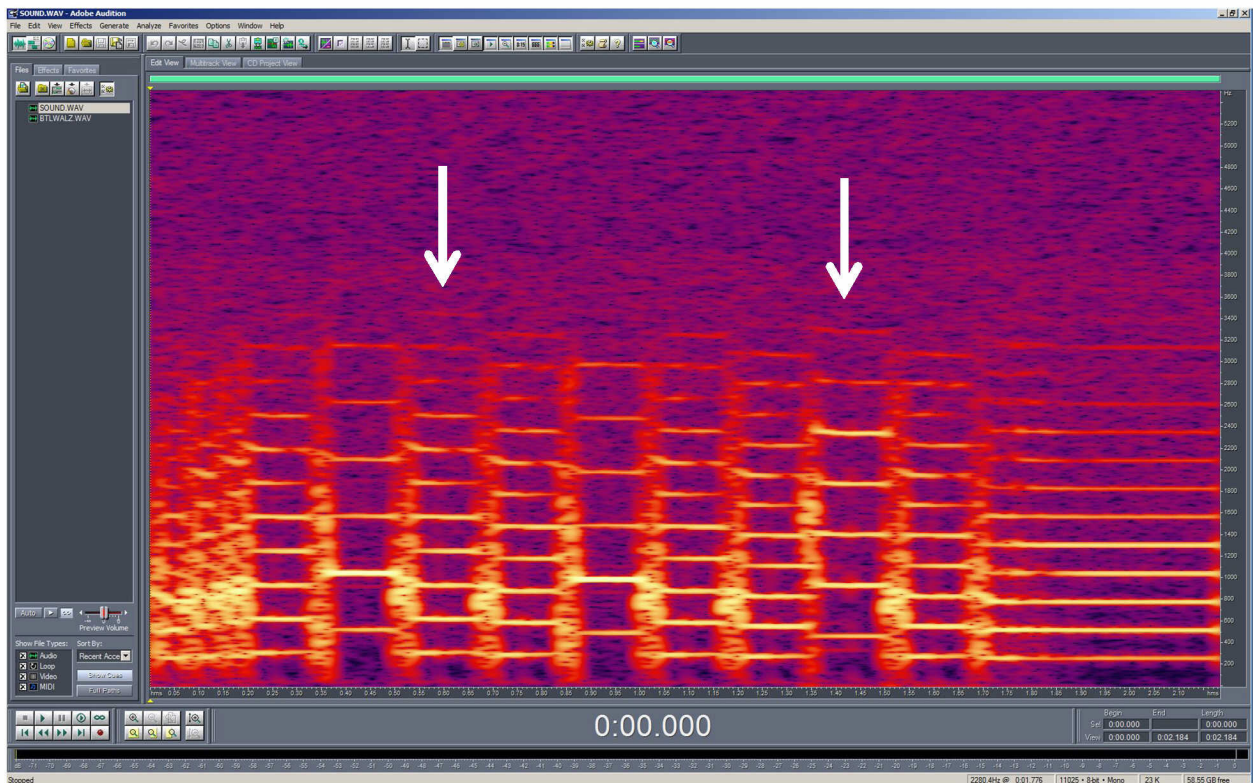


Figure 2. SOUND.WAV, spectrographic representation.

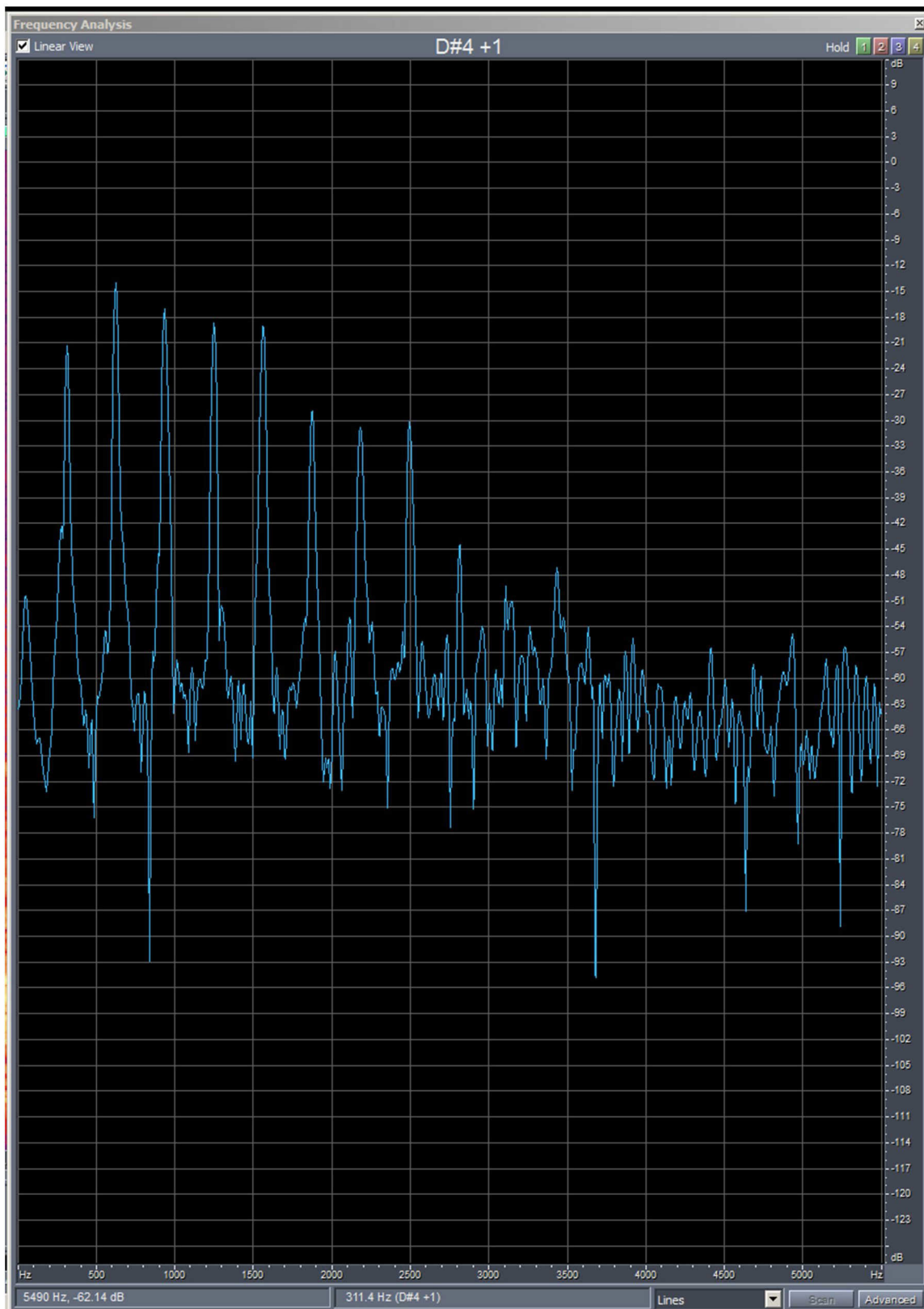


Figure 3. SOUND.WAV, spectrum at approximately 0.6 sec.

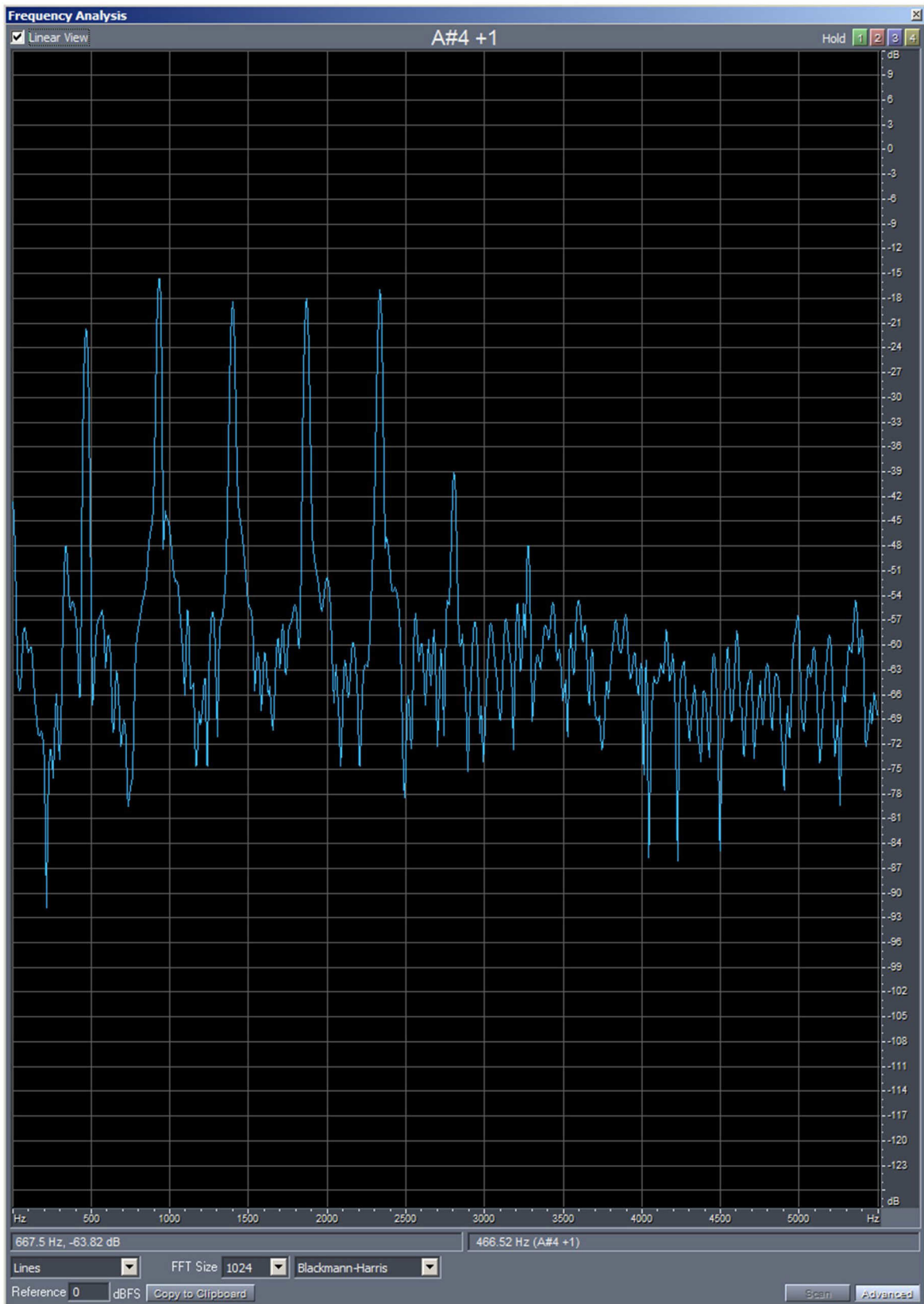


Figure 4. SOUND.WAV, spectrum at approximately 1.42 sec.

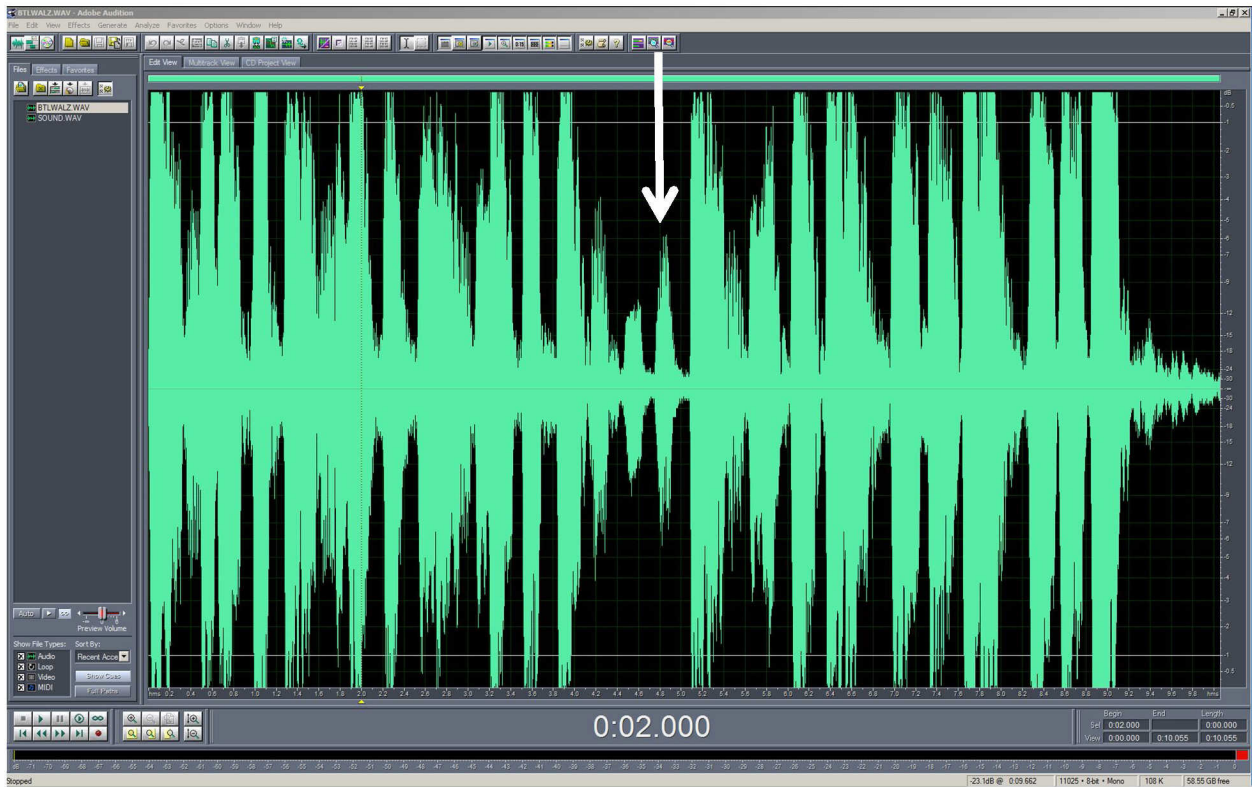


Figure 5. BTLWALZ.WAV, time-domain representation.

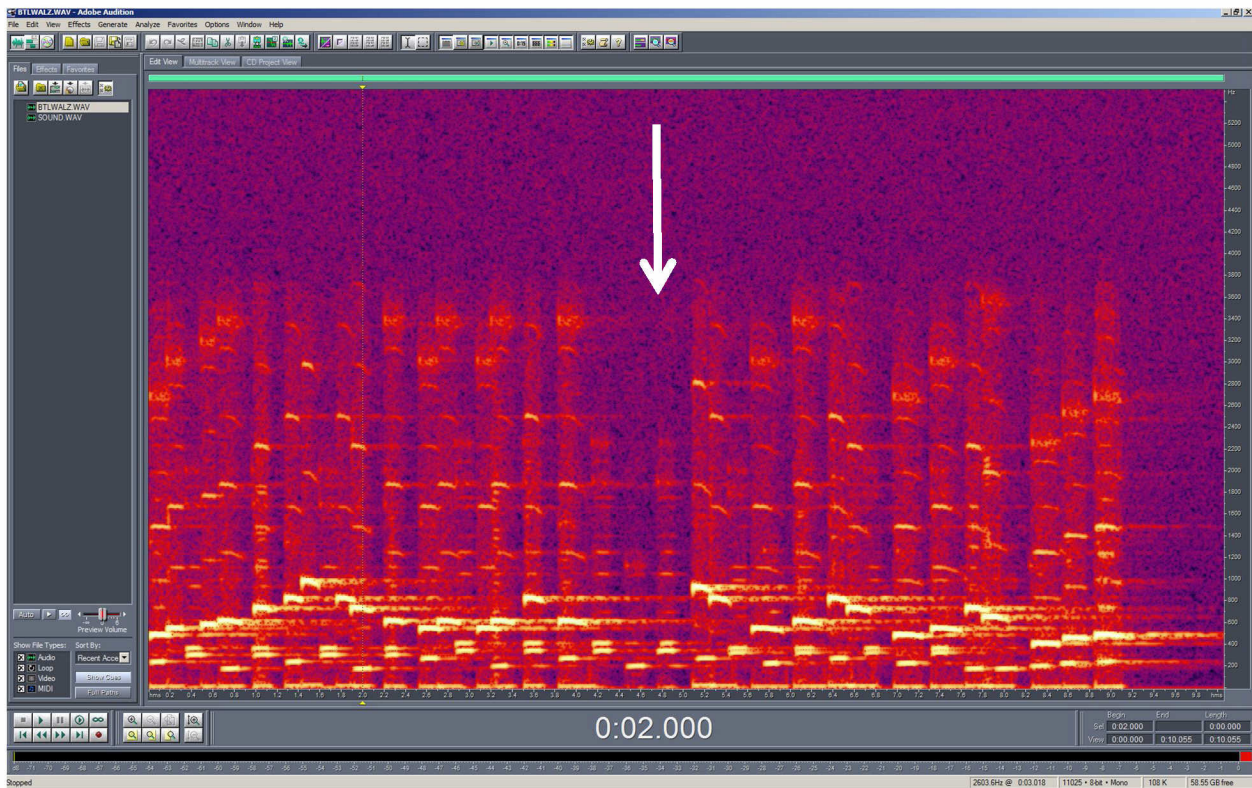


Figure 6. BTLWALZ.WAV, spectrographic representation.

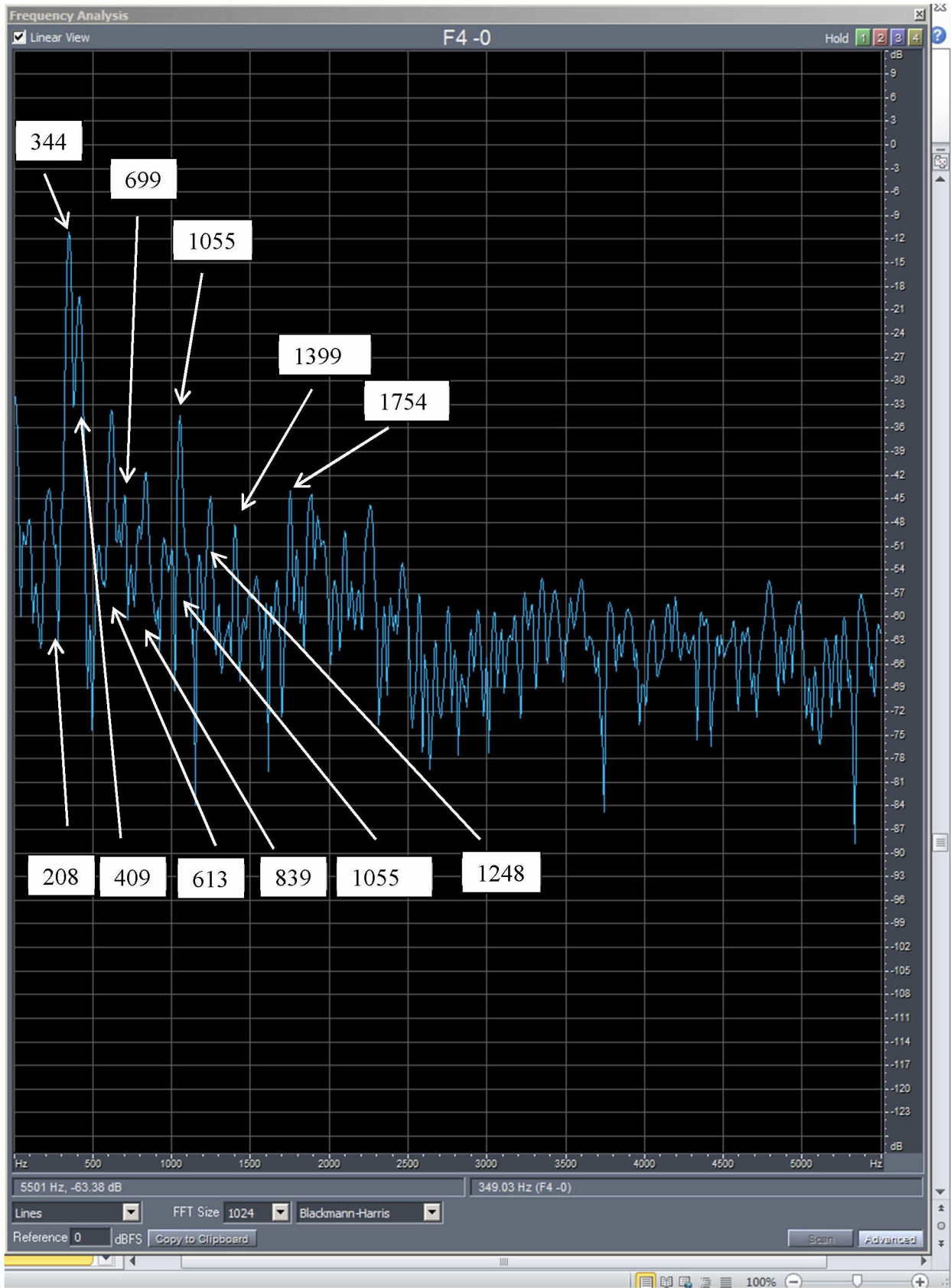


Figure 7. BTLWALZ.WAV, spectrum at approximately 4.8 sec.