

(12) **United States Patent**  
**Merritt et al.**

(10) **Patent No.:** **US 6,421,429 B1**  
(45) **Date of Patent:** **Jul. 16, 2002**

- (54) **NETWORK-BASED SYSTEM ENABLING IMAGE COMMUNICATIONS**
- (75) Inventors: **Andrew C. Merritt**, Basking Ridge;  
**Kenneth H. Rosen**, Middletown, both of NJ (US)
- (73) Assignee: **AT&T Corporation**, New York, NY (US)

5,287,199 A *	2/1994	Zoccolillo .....	379/100.13
5,333,266 A *	7/1994	Boaz et al. ....	379/93.15
5,406,557 A *	4/1995	Baudoin .....	379/93.15
5,459,775 A *	10/1995	Isono et al. ....	379/93.15
5,524,137 A *	6/1996	Rhee .....	379/100.13
5,740,231 A *	4/1998	Cohn et al. ....	379/93.01
5,872,926 A *	2/1999	Levac et al. ....	379/100.13
6,119,137 A *	9/2000	Smith et al. ....	707/523

(\* ) Notice: Subject to any disclaimer, the term of this patent is extended or adjusted under 35 U.S.C. 154(b) by 0 days.

\* cited by examiner

*Primary Examiner*—Stella Woo  
(74) *Attorney, Agent, or Firm*—Morgan & Finnegan, L.L.P.

- (21) Appl. No.: **09/040,719**
- (22) Filed: **Mar. 18, 1998**

(57) **ABSTRACT**

**Related U.S. Application Data**

- (63) Continuation-in-part of application No. 08/636,200, filed on Apr. 22, 1996, now abandoned, which is a continuation of application No. 08/175,022, filed on Dec. 2, 1993, now abandoned.
- (51) **Int. Cl.<sup>7</sup>** ..... **H04M 11/00**
- (52) **U.S. Cl.** ..... **379/93.17; 379/93.15; 379/100.13**
- (58) **Field of Search** ..... 379/93.15, 100.13, 379/88.13, 88.14, 100.08, 100.09, 93.08; 707/523, 526

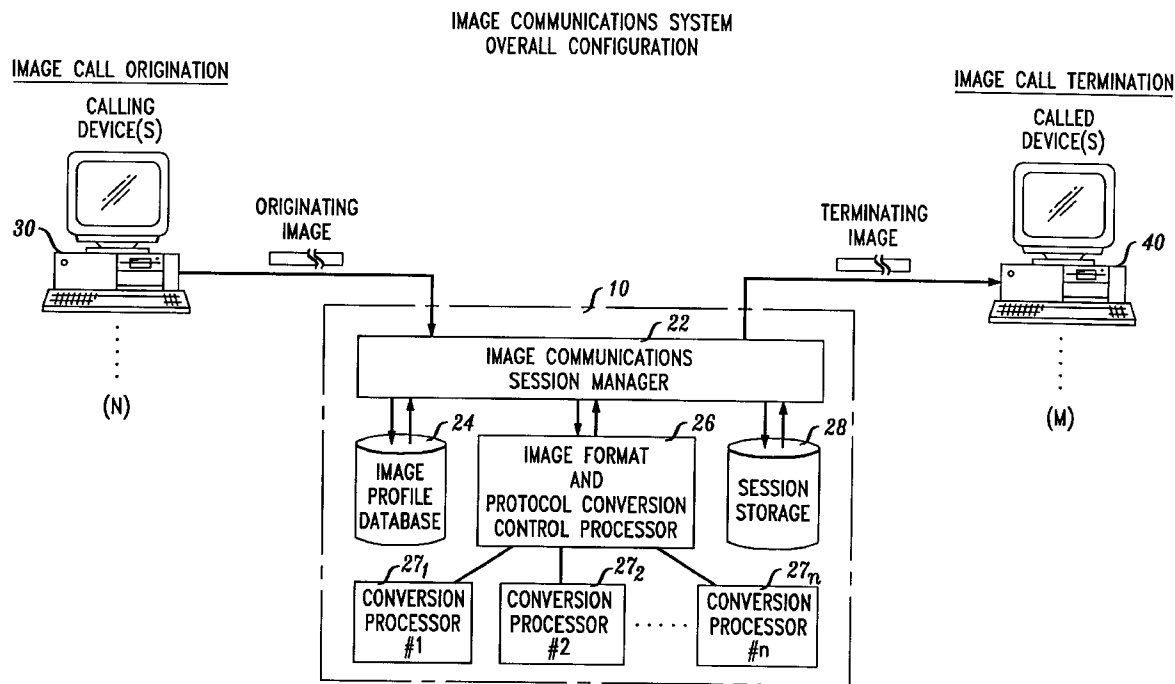
A system is disclosed which enables a multitude of dissimilar end-system devices, appliances, and platforms to interchange image information. The inventive method utilizes a directory database of end-user profiles, a session manager, a conversion manager, individual conversation processors, a queuing database, and a store-and-forward file-folder database. The system accommodates pre-subscribed end-users as well as non-subscription users. The system handles both real-time and store-and-forward communications modes. The present invention may be practiced as either a one-node or a multi-node distributed architecture, scalable as required, and may be either network-based or premises-based, or a hybrid combination of these. Communications transport both into and out of the node(s) can range from voiceband telephone on analog circuits to high speed channel or fact-packet protocol communications modes.

(56) **References Cited**

**U.S. PATENT DOCUMENTS**

5,091,931 A \* 2/1992 Milewski ..... 379/100.13

**25 Claims, 9 Drawing Sheets**



*FIG. 1A*  
NETWORK-BASED IMAGE PROTOCOL  
AND  
FILE FORMAT DATABASE

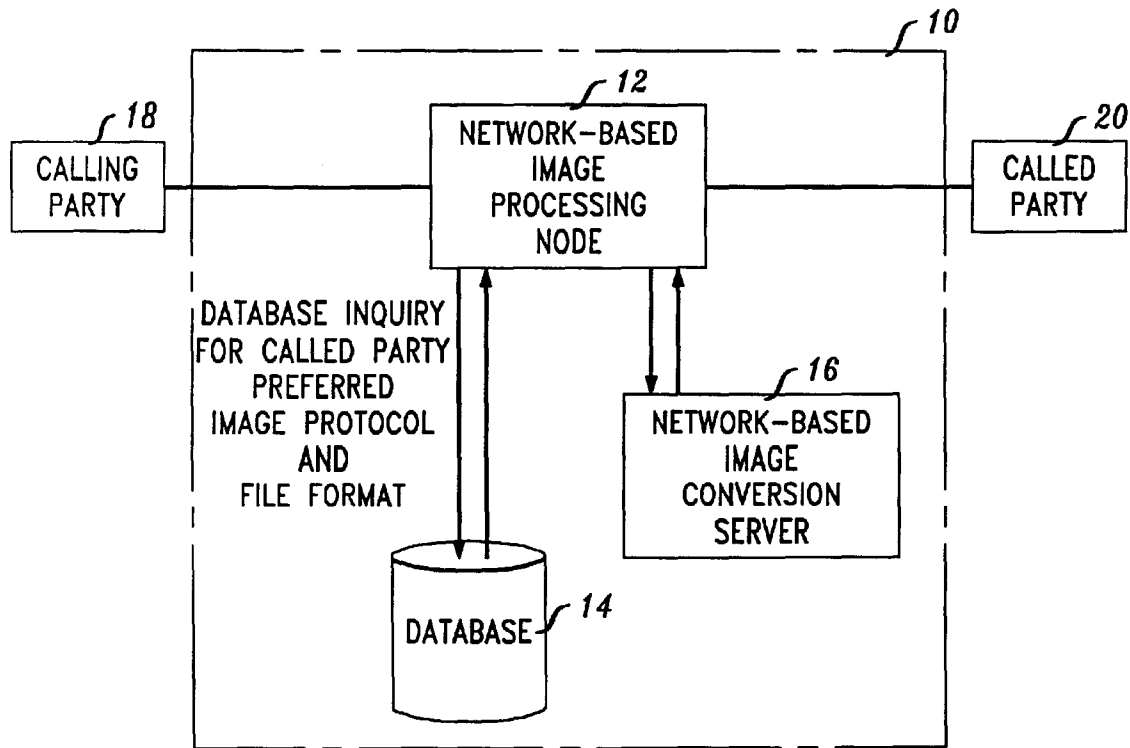


FIG. 1B

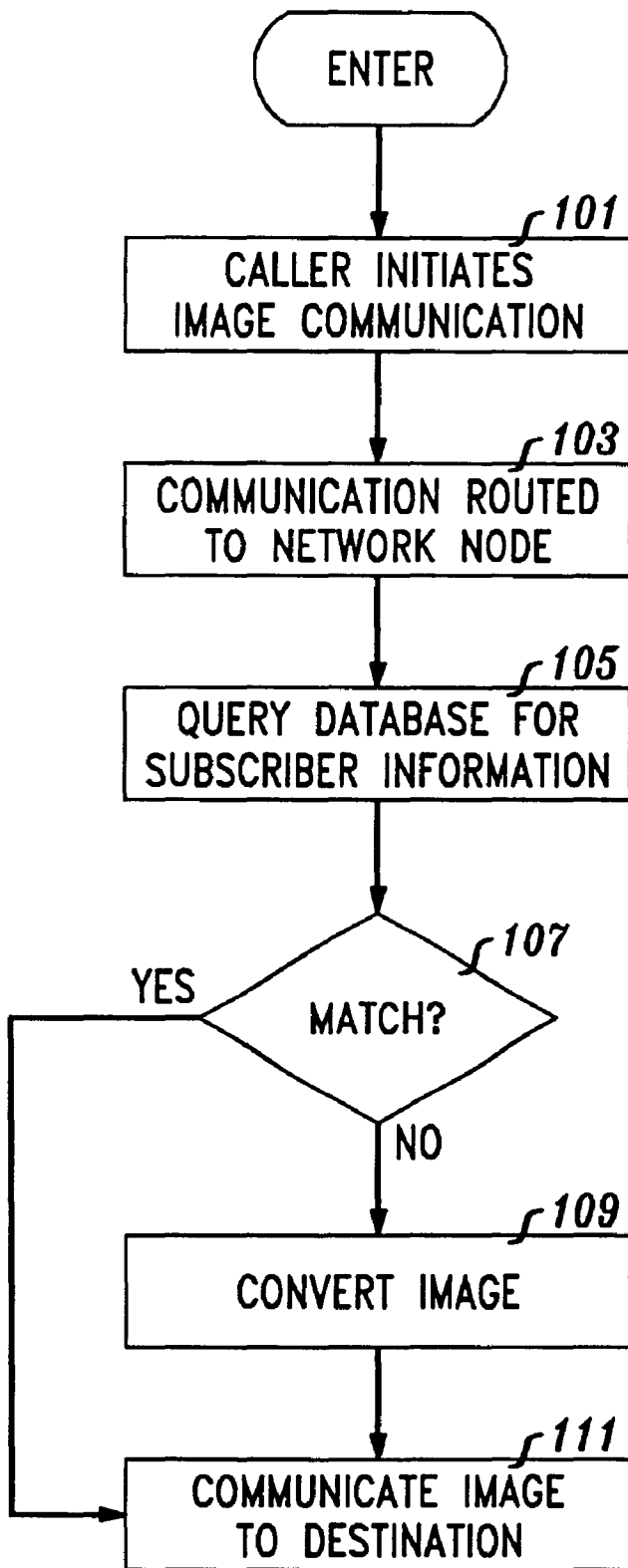


FIG. 2

IMAGE COMMUNICATIONS SYSTEM  
OVERALL CONFIGURATION

IMAGE CALL ORIENTATION

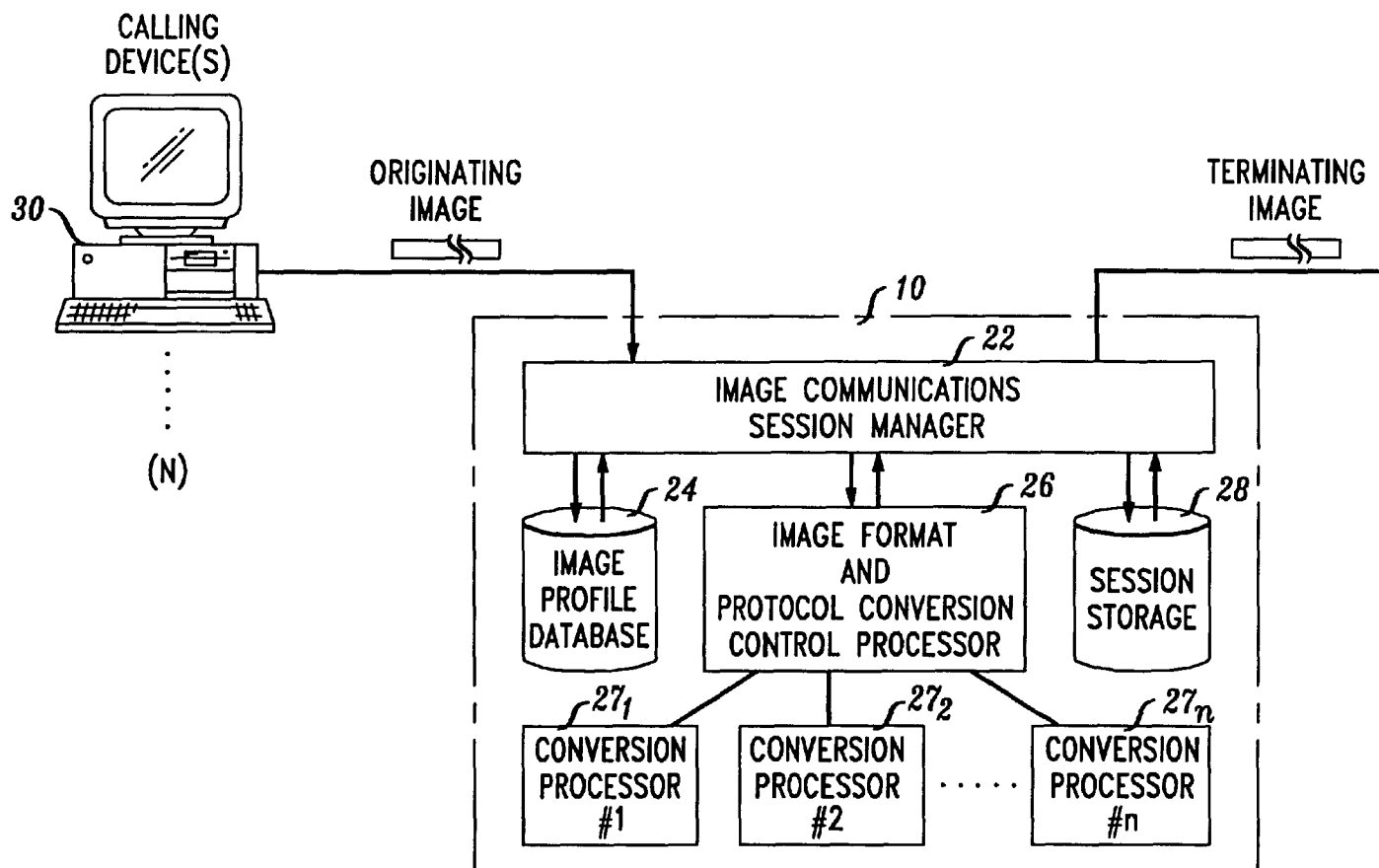
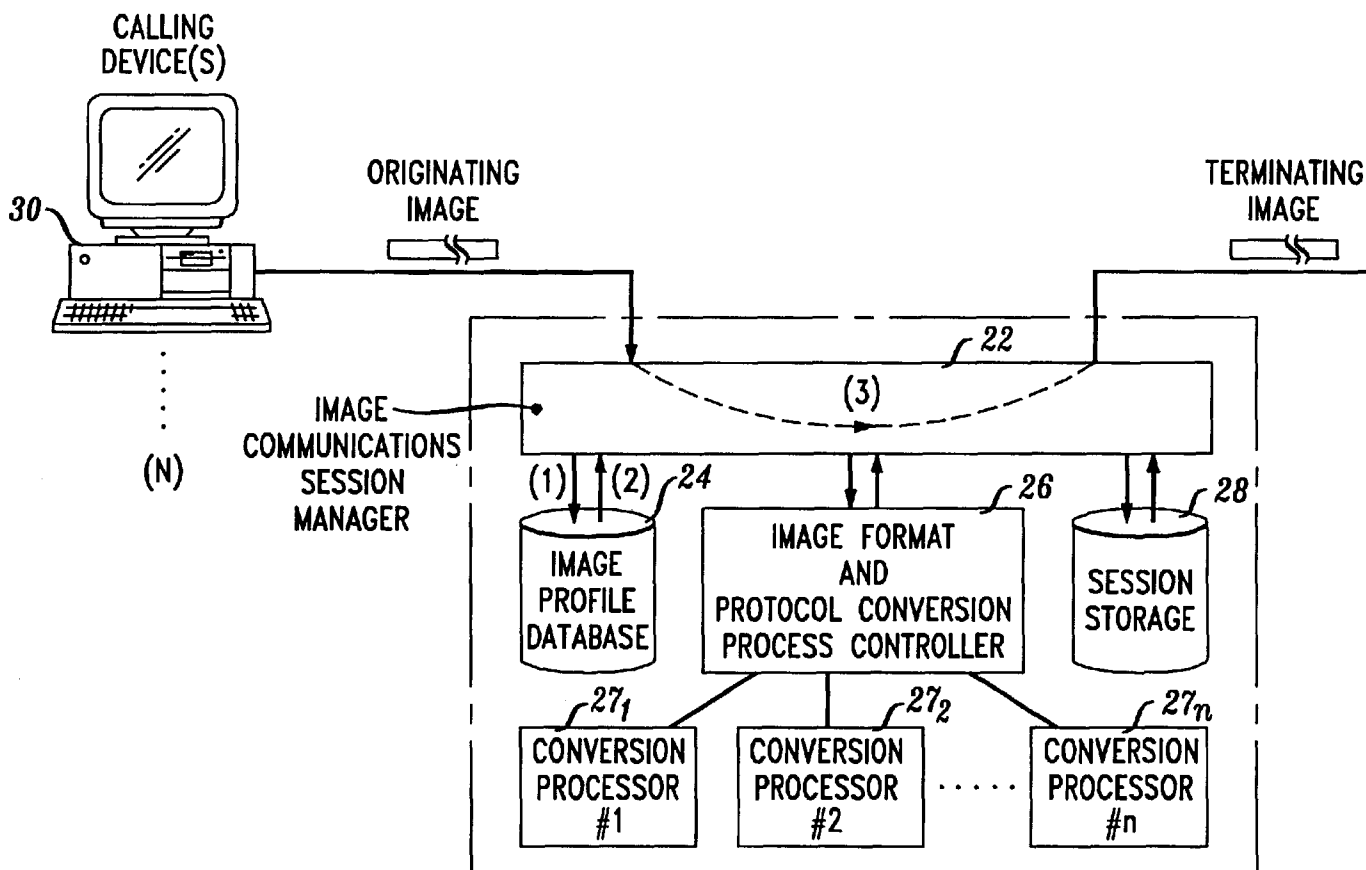


FIG. 3A

IMAGE COMMUNICATIONS SYSTEM  
CASE 1: CALLING SUBSCRIBER WITH IMAGE FILE MATCH  
AND  
REAL-TIME COMMUNICATIONS

IMAGE CALL ORIGATION



# Explore Litigation Insights

Docket Alarm provides insights to develop a more informed litigation strategy and the peace of mind of knowing you're on top of things.

## Real-Time Litigation Alerts



Keep your litigation team up-to-date with **real-time alerts** and advanced team management tools built for the enterprise, all while greatly reducing PACER spend.

Our comprehensive service means we can handle Federal, State, and Administrative courts across the country.

## Advanced Docket Research



With over 230 million records, Docket Alarm's cloud-native docket research platform finds what other services can't. Coverage includes Federal, State, plus PTAB, TTAB, ITC and NLRB decisions, all in one place.

Identify arguments that have been successful in the past with full text, pinpoint searching. Link to case law cited within any court document via Fastcase.

## Analytics At Your Fingertips



Learn what happened the last time a particular judge, opposing counsel or company faced cases similar to yours.

Advanced out-of-the-box PTAB and TTAB analytics are always at your fingertips.

## API

Docket Alarm offers a powerful API (application programming interface) to developers that want to integrate case filings into their apps.

## LAW FIRMS

Build custom dashboards for your attorneys and clients with live data direct from the court.

Automate many repetitive legal tasks like conflict checks, document management, and marketing.

## FINANCIAL INSTITUTIONS

Litigation and bankruptcy checks for companies and debtors.

## E-DISCOVERY AND LEGAL VENDORS

Sync your system to PACER to automate legal marketing.