

IMPORTANT: READ THIS NOTICE BEFORE INSTALLING OR USING THE SOFTWARE

NOKIA MOBILE PHONES LICENSE AGREEMENT

This is a legal agreement between you, the end user, and Nokia Mobile Phones Ltd. (hereinafter Nokia). This License Agreement applies to the copy of the proprietary Nokia Software that is stored on this CD-ROM (hereinafter Software). Nokia is willing to license the Software to you only upon the condition that you accept all terms contained in this agreement. Please read the terms carefully before installing or using the Software, as installing or using the Software will indicate that you accept the terms. If you do not agree to these terms, then Nokia is unwilling to license the Software to you, in which event you should cancel the installation and return the CD-ROM to Nokia.

1. GRANT OF LICENSE

1.1 Nokia grants you the right to install the Software on a local hard disk(s) and use the Software on a single computer or terminal at a time.

1.2 You may not use, modify, or transfer the right to use the Software or any copy thereof except as expressly provided in this Agreement.

1.3 You may transfer all of your rights on a permanent basis, provided that you transfer all copies of the Software and the recipient agrees to the terms of this License Agreement.

I Agree

Quit



This CD-ROM contains...

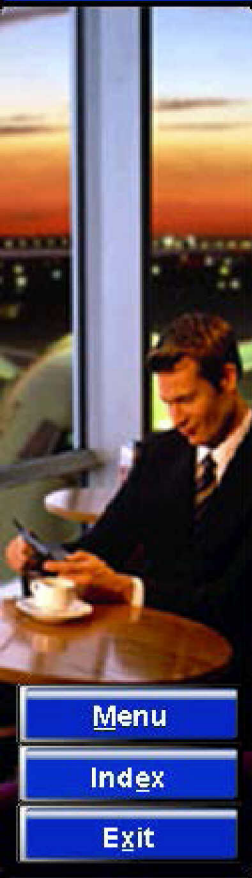
-  Tutorial
-  PC and Macintosh software
-  Communicator software
-  Accessories
-  Product slide show
-  Club Nokia membership application
-  Documentation



Usage of this CD-Rom:

Activate the desired item by clicking the mouse on top of the item or use the keyboard by pressing the underlined alphabet.

NOKIA
9110
Communicator

[Menu](#)[Index](#)[Exit](#)

PC software

-  **PC Suite for Nokia 9110 Communicator**
(Win 95 / 98 / NT 4.0)
-  **Nokia Communicator Server for PC** (Win 3.11)
-  **Intellimigrate** (Win 95 / 98 / NT 4.0)
-  **Adobe Acrobat Reader 3.01 for PC**
-  **Powerpoint Viewer for PC** (Win 95 / 98 NT 4.0)
-  **Voice Recorded Playback Plug-in for Windows 95/NT 4.0**
-  **Nokia Database Converter** (Win 95 / 98 NT 4.0)
-  **Celesta SmartForms for PC** (Win 95 / 98 NT 4.0)

Macintosh software

-  **Nokia Communicator Server for Macintosh**

NOKIA
9110
Communicator

PC Suite for Nokia 9110 Communicator (Win 95/98/NT 4.0)



- Connect the communicator and PC with RS-232 cable or infrared connection
- All backup, restore and other functions are controlled from the PC
- Files can be moved to PC for storage and printing

System Requirements

- Windows 95/98 or NT 4.0
- IBM-compatible 486 or higher PC
- 15 MB hard disk space
- VGA or better monitor
- Serial port

USER GUIDE

1 2 3 4 5 6 7

Click page number for more details

Install



Menu

Index

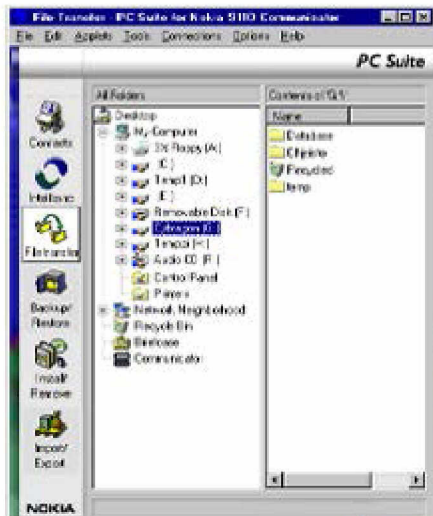
Exit

NOKIA
9110
Communicator

PC Suite includes

File Transfer

- Copy files between communicator and PC easily by using mouse



Install



Menu

Index


Exit

1 2 3 4 5 6 7

Click page number for more details

NOKIA
9110
Communicator



Applications

-  [Innolink Spreadsheet](#) (trial version)
-  [Celesta Task Assistant](#)
-  [Celesta SmartForms](#) (trial version)
-  [Converter](#)
-  [Telnet](#)
-  [File Transfer Protocol \(FTP\)](#)
-  [File transfer](#)
-  [Import/Export calendar data](#)
-  [Import/Export contacts](#)
-  [Electronic Banking](#) (Germany only)
-  [Minitel](#) (France only)
-  [Wireless Data Backup](#)

1 2

Click pagenumbers for more

NOKIA
9110
Communicator[Menu](#)[Index](#)[Exit](#)

**Galleries** [Sound gallery](#) [Image gallery](#)**Games** [9 Lives](#) [Puzzle](#) [Reversi](#)[Menu](#)[Index](#)[Exit](#)[1](#) [2](#)

Click pagenumbers for more

NOKIA
9110
Communicator



Sound Gallery

Use the PC Suite for Nokia Communicator or Nokia Communicator Server software to copy the files into the 'Tones' folder of the communicator.

These files are located in the directory:
\\data\9110_sw\Sounds on your CD drive.

["BOJOING.WAV",
"BTLWALZ.WAV",
"CARTOON.WAV",
"COW.WAV",
"DIDIDI.WAV",
"DONK.WAV",
"EFFECT.WAV",
"FLABOOM.WAV",
"GADAGA.WAV",



Menu

Index



Exit

NOKIA
9110
Communicator

Sound Gallery

Use the PC Suite for Nokia Communicator or Nokia Communicator Server software to copy the files into the 'Tones' folder of the communicator.

These files are located in the directory:
`ldata\9110_sw\Sounds` on your CD drive.

"GRANVALS.WAV", 
"HITCH.WAV",
"HORSE.WAV",
"LAUGH.WAV",
"LION.WAV",
"MELODY.WAV",
"PARTY1.WAV",
"PARTY2.WAV",
"POULTRY.WAV", 



Menu

Index

Exit

NOKIA
9110
Communicator



Sound Gallery

Use the PC Suite for Nokia Communicator or Nokia Communicator Server software to copy the files into the **'Tones'** folder of the communicator.

These files are located in the directory:
`\data\9110_sw\Sounds` on your CD drive.

"PRRR.WAV",
"PRRRRR.WAV",
"RAINFOR.WAV",
"ROOSTER.WAV",
"SOUND.WAV",
"TJONG.WAV",
"TWANG.WAV",
"VAGVAG.WAV",
"WHIZFNK.WAV",



Menu

Index

Exit

NOKIA
9110
Communicator

Sound Gallery

Use the PC Suite for Nokia Communicator or Nokia Communicator Server software to copy the files into the 'Tones' folder of the communicator.

These files are located in the directory:
|data|9110_sw\Sounds on your CD drive.

"PRRRRR.WAV",
"RAINFOR.WAV",
"ROOSTER.WAV",
"SOUND.WAV",
"TJONG.WAV",
"TWANG.WAV",
"VAGVAG.WAV",
"WHIZFNK.WAV",
"ZIRR.WAV"]



Menu

Index

Exit

NOKIA
9110
Communicator

File transfer

With this application you can transfer files between your communicator and a PC/Mac. Before using this application, you need to start the Nokia Communicator Server program on your PC.

This program is located in the directory:
 \data\9110_sw\Sys_Apps\En on your CD drive.

Note: Your communicator requires 19KB of free disk space to run File Transfer.



Menu

Index

Exit

NOKIA
9110
 Communicator

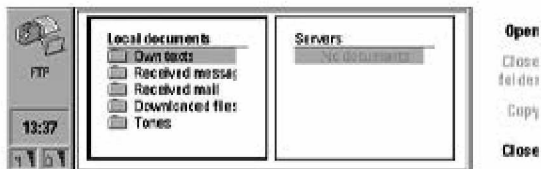
File Transfer Protocol (FTP)

the server and press OK.

Use the PC Suite for Nokia Communicator or Nokia Communicator software to copy the program in to the communicator.

This application is located in the directory:
ldata9110_sw\Ftp on your CD drive.

Note: Your communicator requires 67 KB of free disk space to run FTP.



Menu

Index

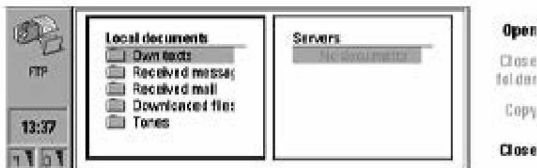
Exit

NOKIA
9110
 Communicator

File Transfer Protocol (FTP)

With FTP (File Transfer Protocol) you can transfer files between your communicator and an FTP server located anywhere in the Internet or in intranets. Before using this application, be sure to define your Internet access point in the Internet settings, see "Internet settings" on User manual.

When you open the FTP application, you will see two windows on the display: the window on the left shows the folders of the communicator, and the one on the right shows the list of servers you have defined. Use the



Menu

Index

Exit

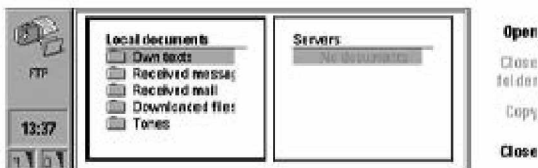
NOKIA
9110
Communicator

File Transfer Protocol (FTP)

Tab, or the left and right arrow keys to move between these two windows.

To define an FTP server:

- Press the **Menu** button and select **New server**.
- Enter the name and the IP address of the server.
- Enter the number of the server port. The default port number is 21.
- Press **Change** and select the Internet access point you use for connecting to the server.
- To edit an existing server, press the **Menu** button and



Menu

Index

Exit

NOKIA
9110
Communicator

NOKIA

Club Nokia

**Club
NOKIA**



Join Club Nokia and You will be forming the future with us. Learn about exciting new products and inventions through Club Nokia.

[Join now](#)

[Menu](#)

[Index](#)

[Exit](#)

**NOKIA
9110**
Communicator

Verizon Wireless
Exhibit 1094-0016

File Transfer Protocol (FTP)

select **Edit server**.

- To remove a server, select **Delete server**.

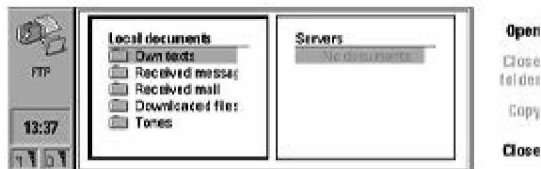
To connect to an FTP server:

- Go to the window on the right and select the FTP server to which you want to connect.

- Press **Connect**.

- Enter the user name and password you need to log on the server and press **OK**.

- When the connection to the server has been established, the contents of the server will be shown in



Menu

Index

Exit

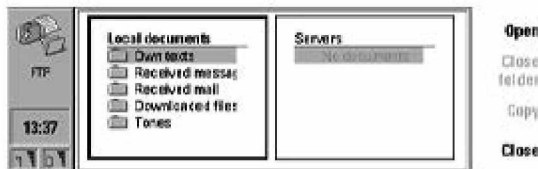
NOKIA
9110
Communicator

File Transfer Protocol (FTP)

the window on the right.

- Select a directory and press **Open**.
- Press the **Menu** button and select whether to copy files between the server and your communicator; remove files or directories from the server; create directories in the server; or display information about the file.
- To disconnect from the server, press **Hang up**.

With FTP you can transfer files between your communicator and an FTP server located anywhere in the Internet or in intranets.



Menu

Index

Exit

NOKIA
9110
Communicator

Nokia 9110 Communicator User Guide

Dansk
Deutsch
English
English (APAC)
Español
Français
Italiano
Norsk
Português
Suomi
Svenska

PC Suite for Nokia 9110 Communicator User Guide

Dansk
Deutsch
English
Español
Français
Italiano
Norsk

Keyboard use:

- Select the desired item using up/down arrow keys.
- Press A to access.



Menu

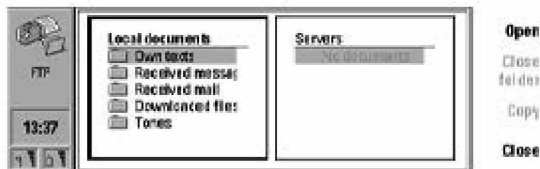
Exit

File Transfer Protocol (FTP)

To connect to an FTP server

- Define the FTP server: press the **Menu** button and select **New server**. Enter the required information.
- In the FTP main view, go to the window on the right and select the FTP server to which you want to connect.
- Press **Connect**.
- Enter the user name and password you need to log on to the server and press **OK**.

Use the PC Suite for Nokia Communicator or Nokia



Menu

Index

Exit

NOKIA
9110
Communicator



Menu

Exit

License agreement

Tutorial

Getting started with contacts

Your first fax

Your first Short Message (SMS)

Your first mail

Computer connectivity

Computer connectivity and Fax modem

How to upgrade from the Nokia 9000/9000i Communicator
or from Data Suite

Wireless imaging - communicating with still images

Printing with Nokia 9110 Communicator

PC and Macintosh software

PC Suite for Nokia 9110 Communicator

Contacts

Intellisync

File Transfer

Backup/Restore

Install/Remove

Import/Export

Keyboard use:

- Select the desired item using up/down arrow keys.
- Press A to access.





Import/Export

Install PC Suite (start installation)

Nokia Communicator Server for PC

Install Nokia Communicator Server for PC (start installation)

Intellimigrate

Install Intellimigrate (start installation)

Adobe Acrobat Reader for PC

Install Acrobat Reader for PC (start installation)

Powerpoint Viewer for PC

Install Powerpoint Viewer for PC (start installation)

Voice Recorded Playback Plug-in for Windows

Install Voice Recorded Playback Plug-In for Windows (start installation)

Nokia Database Converter for Windows

Install Nokia Database Converter for Windows (start installation)

Celesta SmartForms for Windows

Install Celesta SmartForms for Windows (start installation)

Macintosh software

Nokia Communicator Server for Macintosh

Communicator software



Menu

Exit

Keyboard use:

- Select the desired item using up/down arrow keys.
- Press A to access.



Menu

Exit

Communicator software

Innolink Spreadsheet

Celesta Task Assistant

Celesta Smart Forms

Converter

Telnet

File transfer protocol (FTP)

File transfer

Import/Export calendar data

Import/Export contacts

Bank Application for Germany

Minitel

Wireless Data Backup

Galleries

Sounds gallery

Image gallery

Games

9 Lives

Puzzle

Reversi

Accessories

Keyboard use:

- Select the desired item using up/down arrow keys.
- Press A to access.





Menu

Exit

Accessories

About accessories

Advanced Desktop Stand DCH-7

Memory Card DTS-4

Headset HDC-8

Advanced Handsfree Car Kit CARK-99

Handset HSU-1

High Power Battery BLN-3

Performance Travel Charger ACP-9

Mobile Charger LCH-9

RS-232 Adapter Cable DLR-2

Carrying Cases CBR-4 & CBR-5

Product slide show

Product slide show

Club Nokia Membership application

www.club.nokia.com

Documentations

Nokia 9110 Communicator User Guide

Dansk

English

Keyboard use:

- Select the desired item using up/down arrow keys.
- Press A to access.





Menu

Exit

Deutsch
English
English (APAC)
Español
Français
Italiano
Norsk
Português
Suomi
Svenska

**PC Suite for Nokia 9110 Communicator User
Guide**

Dansk
Deutsch
English
Español
Français
Italiano
Norsk
Português
Suomi



Keyboard use:

- Select the desired item using up/down arrow keys.
- Press A to access.



Menu

Exit

Svenska

Quick Guides

Česky

Dansk

Deutsch

Eesti

English

English (APAC)

Español

Français

Greek

Hrvatski

Italiano

Latviešu

Lietuvi kalba

Limba română

Magyar

Nederlands

Norsk

Polish

Português

**Keyboard use:**

- Select the desired item using up/down arrow keys.
- Press A to access.

Russian
Slovenski
Slovenský jazyk
Suomi
Svenska
Türkçe

User Guide for Celesta SmartForms Pro

English

**User Guide for Celesta SmartForms for
Windows 95/NT 4.0**

English

**Using Nokia 9110 Communicator as a fax
modem (Win 95)**

English (cable connection)

English (infrared connection)

**Using Nokia 9110 Communicator as a fax
modem (Win 98)**

English (cable connection)

English (infrared connection)

User Guide for Innolink Spreadsheet

English

Keyboard use:

- Select the desired item using up/down arrow keys.
- Press A to access.



Menu

Exit





Menu

Exit

English

**Benutzerhandbuch für Kurtzbeschreibung
Online Banking**

Deutsch

Corporate User Guides**Remote Configuration Option**

Dansk

Deutsch

English

Español

Français

Italiano

Norsk

Português

Suomi

Svenska

WWW SMS Forms Extension

Dansk

Deutsch

English

Español

**Keyboard use:**

- Select the desired item using up/down arrow keys.
- Press A to access.



Menu

Exit

Español
Français
Italiano
Norsk
Português
Suomi
Svenska
Setting Up Dial-In Service
Dansk
Deutsch
English
Español
Français
Italiano
Norsk
Português
Suomi
Svenska
Setting Up Mail Service
Dansk
Deutsch



Keyboard use:

- Select the desired item using up/down arrow keys.
- Press A to access.



Menu

Exit

English
Español
Français
Italiano
Norsk
Português
Suomi
Svenska
WWW Browser Style Guide
Dansk
Deutsch
English
Español
Français
Italiano
Norsk
Português
Suomi
Svenska
Technical information
AT Commands

**Keyboard use:**

- Select the desired item using up/down arrow keys.
- Press A to access.

Portugues

Suomi

Svenska

WWW Browser Style Guide

Dansk

Deutsch

English

Español

Français

Italiano

Norsk

Português

Suomi

Svenska

Technical information

AT Commands

More information

www.nokia.com

www.forum.nokia.com

www.nokia-asia.com

TeamWare



Menu

Exit

Keyboard use:

- Select the desired item using up/down arrow keys.
- Press A to access.