



US007334005B2

(12) **United States Patent**  
**Sobel**

(10) **Patent No.:** **US 7,334,005 B2**

(45) **Date of Patent:** **Feb. 19, 2008**

(54) **CONTROLLABLE DEPLOYMENT OF SOFTWARE UPDATES**

2006/0075001 A1\* 4/2006 Canning et al. .... 707/203

**OTHER PUBLICATIONS**

(75) Inventor: **William E. Sobel**, Stevenson Ranch, CA (US)

<http://web.archive.org/web/20041009093542/www.microsoft.com/>, Frequently Asked Questions About Updating Your Computer, Aug. 25, 2004.

(73) Assignee: **Symantec Corporation**, Cupertino, CA (US)

<http://web.archive.org/web/20041016185847/http://ekb.dbstalk.com/295>; Dish Network Receiver Software Versions, Oct. 16, 2004.

(\* ) Notice: Subject to any disclaimer, the term of this patent is extended or adjusted under 35 U.S.C. 154(b) by 533 days.

\* cited by examiner

*Primary Examiner*—Shahid Alam  
*Assistant Examiner*—Patrick E Sweeney  
(74) *Attorney, Agent, or Firm*—Fenwick & West LLP

(21) Appl. No.: **11/106,194**

(57) **ABSTRACT**

(22) Filed: **Apr. 13, 2005**

The risk of inadvertent introduction of software bugs to a large number of users during a software update is minimized by controlling updates using a uniform mechanism of sending updates to seed users. A value-generating module generates a value for a computer, the value falling within a population range of values. A sampling range-generating module generates a sampling range of values as a proper subset of the population range, the probability of the random value falling within the sampling range being predetermined. An eligibility determination module determines whether the computer is eligible to receive a software update, the computer being determined eligible when the random value for the computer falls within the sampling range, and an update module provides the software update to the computer based on the eligibility determination. In some embodiments, a problem review module determines whether the update has caused a problem for computers receiving the update.

(65) **Prior Publication Data**

US 2006/0248116 A1 Nov. 2, 2006

(51) **Int. Cl.**  
**G06F 9/44** (2006.01)  
**G06F 9/445** (2006.01)

(52) **U.S. Cl.** ..... **707/203**; 717/177; 717/172;  
708/250

(58) **Field of Classification Search** ..... 717/172,  
717/177; 707/203

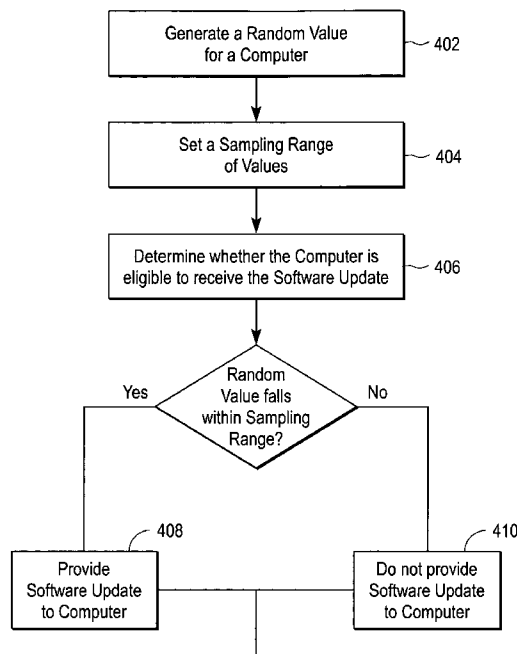
See application file for complete search history.

(56) **References Cited**

**U.S. PATENT DOCUMENTS**

7,181,512 B1\* 2/2007 Leshner et al. .... 709/223  
2003/0066065 A1\* 4/2003 Larkin ..... 717/177  
2004/0019889 A1\* 1/2004 Melchione et al. .... 717/177  
2004/0060044 A1\* 3/2004 Das et al. .... 717/171

**26 Claims, 5 Drawing Sheets**



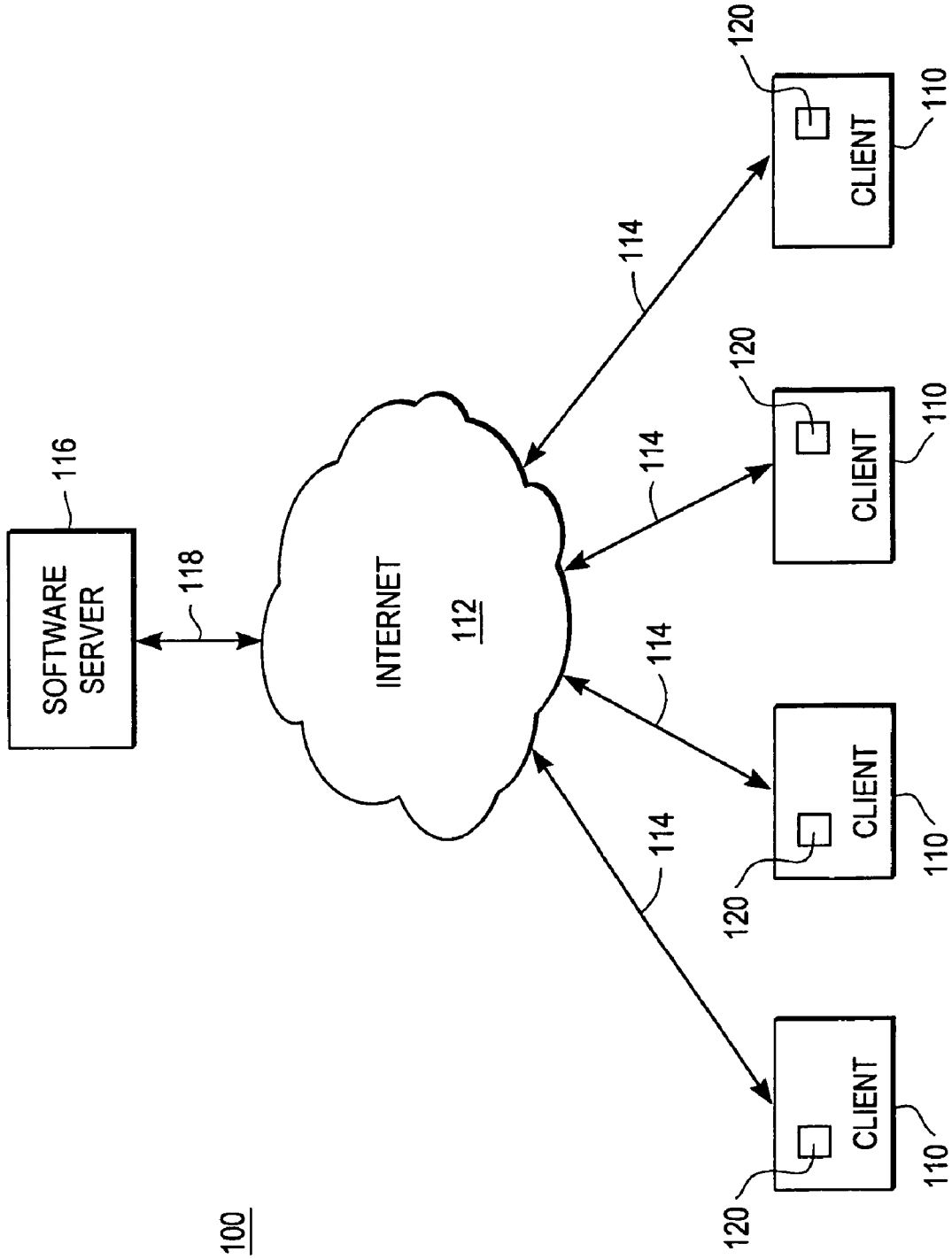


FIG. 1

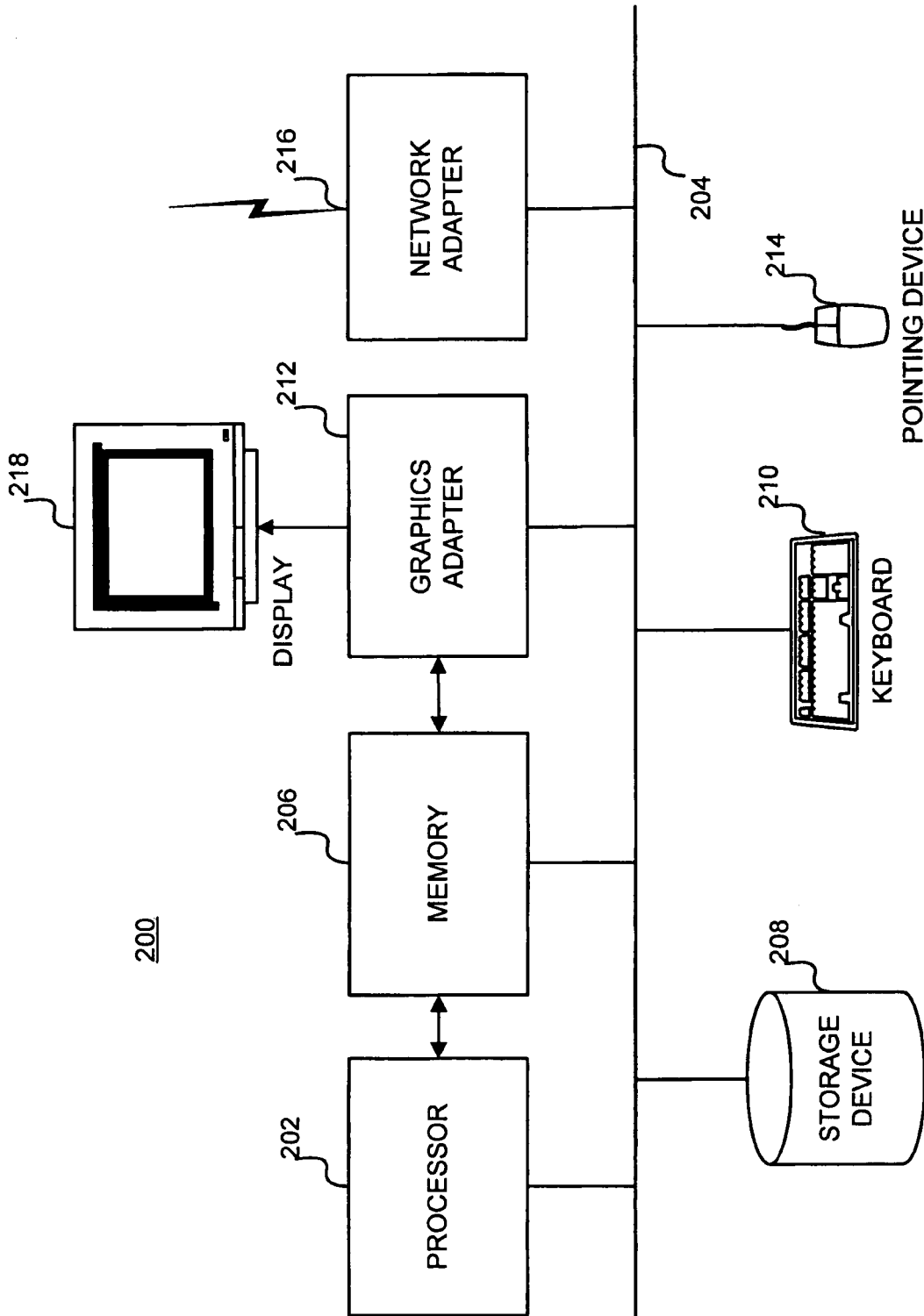


FIG. 2

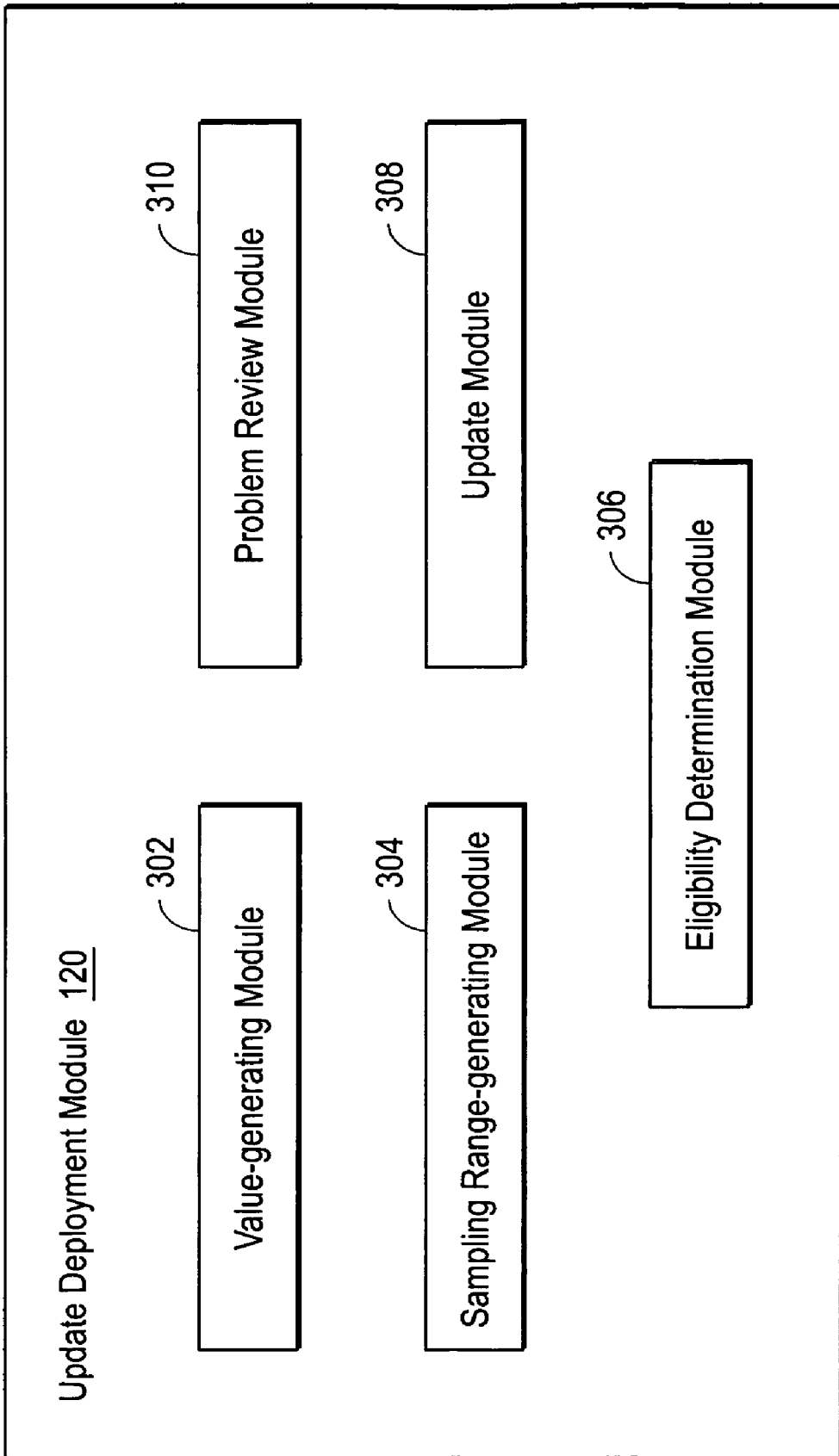


FIG. 3

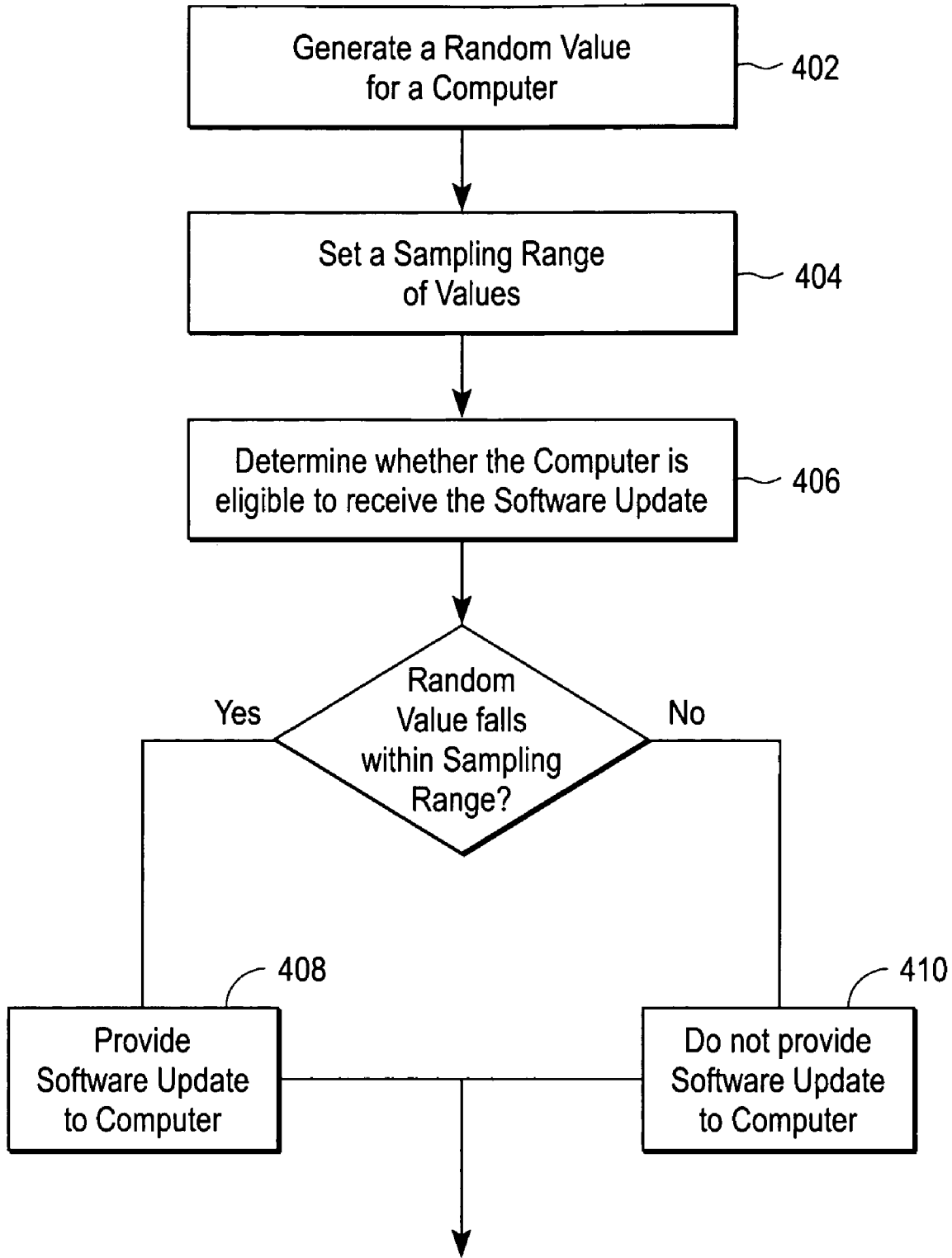


FIG. 4

# Explore Litigation Insights

Docket Alarm provides insights to develop a more informed litigation strategy and the peace of mind of knowing you're on top of things.

## Real-Time Litigation Alerts



Keep your litigation team up-to-date with **real-time alerts** and advanced team management tools built for the enterprise, all while greatly reducing PACER spend.

Our comprehensive service means we can handle Federal, State, and Administrative courts across the country.

## Advanced Docket Research



With over 230 million records, Docket Alarm's cloud-native docket research platform finds what other services can't. Coverage includes Federal, State, plus PTAB, TTAB, ITC and NLRB decisions, all in one place.

Identify arguments that have been successful in the past with full text, pinpoint searching. Link to case law cited within any court document via Fastcase.

## Analytics At Your Fingertips



Learn what happened the last time a particular judge, opposing counsel or company faced cases similar to yours.

Advanced out-of-the-box PTAB and TTAB analytics are always at your fingertips.

## API

Docket Alarm offers a powerful API (application programming interface) to developers that want to integrate case filings into their apps.

## LAW FIRMS

Build custom dashboards for your attorneys and clients with live data direct from the court.

Automate many repetitive legal tasks like conflict checks, document management, and marketing.

## FINANCIAL INSTITUTIONS

Litigation and bankruptcy checks for companies and debtors.

## E-DISCOVERY AND LEGAL VENDORS

Sync your system to PACER to automate legal marketing.