

[54] METHOD FOR CONTROLLING A COMPUTER WITH AN AUDIO SIGNAL

5,357,276 10/1994 Banker et al. 348/7
5,438,355 8/1995 Palmer 348/1

(List continued on next page.)

[75] Inventors: Jeffrey Jovan Philyaw, Dallas; David Kent Mathews, Carrollton; Brad Maxwell Smith, Irving; Paul Scovell Adams, Dallas, all of Tex.

FOREIGN PATENT DOCUMENTS

0 152 341 8/1985 European Pat. Off. .
2 692 613 9/1994 France .
0 601 437 A1 6/1994 Germany .
WO 91/03891 3/1991 WIPO .
WO 95/28044 10/1995 WIPO .

[73] Assignee: DigitalConvergence.com inc., Dallas, Tex.

OTHER PUBLICATIONS

[21] Appl. No.: 09/151,530

“Integrating Traditional Media with the Web”, web page located at www.webchoicetv.com/products, 4 pages, by Web-Choice, Inc., Santa Monica, CA.

[22] Filed: Sep. 11, 1998

Web page for Symbol, located at www.symbol.com, 5 pages. “Symbol CyberPen (previously know as InfoPen)”, web page located at www.symbol.com/products/consumer systems/consumer cyberpen, 2 pages.

[51] Int. Cl.⁷ G06F 15/00; G06F 15/16

[52] U.S. Cl. 709/238; 709/218; 709/219; 709/224; 709/239

[58] Field of Search 709/238, 239, 709/245, 218, 224, 719; 345/327

Primary Examiner—Zarni Maung
Assistant Examiner—Almari Romero
Attorney, Agent, or Firm—Gregory M. Howison

[56] References Cited

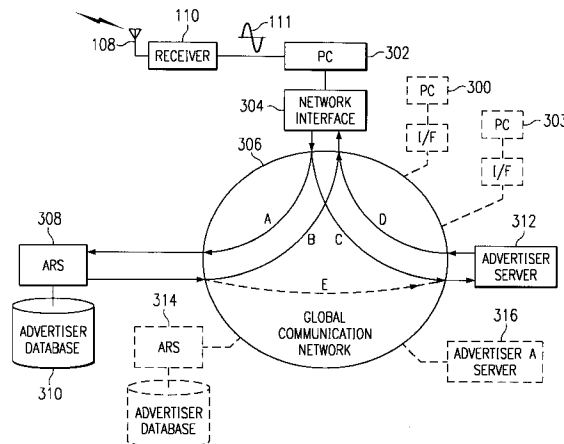
U.S. PATENT DOCUMENTS

Table of references cited including Yamamoto et al., Pakenham et al., Schepers et al., DeAngelis, McKenna et al., Rhoads, Kajitani et al., Yee, Kameo et al., Pocock et al., Seiler et al., Brule et al., Gorog, Andresen et al., Geier et al., Von Kohorn, Kelley et al., Barstow et al., Litteral et al., Fitzpatrick et al., Holman, and Murphy.

[57] ABSTRACT

A method for controlling a computer by inputting an analog signal into the computer to control a web browser software application. The analog signal contains a trigger signal which activates proprietary software, and a product identifier. The proprietary software launches the web browser application on the computer, extracts the product identifier, and creates an appended data string by appending server address (URL) routing information to the product identifier information. The appended data string is automatically inserted into the web browser as keystroke data and routed to an advertiser reference server. The appended routing information directs communication to the advertiser reference server which contains a cross-referenced database of advertiser product identifier information and associated advertiser server URLs. The advertiser server URL and a request for product information relevant to the product identifier is returned to the computer web browser where it is automatically redirected to the advertiser server containing the advertiser product information. The advertiser product information is then returned to the computer for display.

18 Claims, 6 Drawing Sheets



U.S. PATENT DOCUMENTS

5,446,490	8/1995	Blahut et al.	348/7	5,905,251	5/1999	Knowles	235/472.01
5,446,919	8/1995	Wilkins	455/6.2	5,905,665	5/1999	Rim	364/746
5,491,508	2/1996	Friedell et al.	348/16	5,905,865	5/1999	Palmer et al.	395/200.47
5,570,295	10/1996	Isenberg et al.	379/90.01	5,907,793	5/1999	Reams	455/3.1
5,572,643	11/1996	Judson	395/793	5,915,090	6/1999	Joseph et al.	709/202
5,592,551	1/1997	Lett et al.	380/20	5,925,865	7/1999	Steger	235/379
5,594,226	1/1997	Steger	235/379	5,929,850	7/1999	Broadwin et al.	345/327
5,604,542	2/1997	Dedrick	348/552	5,933,468	11/1998	Guy et al.	434/350
5,640,193	6/1997	Wellner	348/7	5,933,829	8/1999	Durst et al.	707/10
5,664,110	9/1997	Green et al.	705/26	5,948,061	9/1999	Merriman et al.	709/219
5,675,721	10/1997	Freedman et al.	395/129	5,957,695	9/1999	Redford et al.	434/307 R
5,694,163	12/1997	Harrison	348/13	5,960,411	9/1999	Hartman et al.	705/26
5,708,780	1/1998	Levergood et al.	709/229	5,961,603	10/1999	Kunkel et al.	709/229
5,715,314	2/1998	Payne et al.	705/78	5,970,471	10/1999	Hill	705/26
5,724,424	3/1998	Gifford	705/79	5,970,472	10/1999	Allsop et al.	705/26
5,754,906	5/1998	Yoshida	396/448	5,971,277	10/1999	Cragun et al.	235/462.01
5,761,606	6/1998	Wolzien	455/6.2	5,974,443	10/1999	Jeske	709/202
5,768,528	6/1998	Stumm	709/231	5,974,451	10/1999	Simmons	709/218
5,774,664	6/1998	Hidary et al.	709/218	5,976,833	11/1999	Furukawa et al.	435/69.1
5,774,870	6/1998	Storey	705/14	5,978,773	11/1999	Hudetz et al.	709/219
5,778,367	7/1998	Wesinger, Jr.	707/10	5,991,739	11/1999	Cupps et al.	705/26
5,790,793	8/1998	Higley	709/218	6,002,394	12/1999	Schein et al.	345/327
5,794,210	8/1998	Goldhaber et al.	705/14	6,003,073	12/1999	Solvason	709/219
5,796,952	8/1998	Davis et al.	305/200.54	6,006,257	12/1999	Slezak	709/219
5,854,897	12/1998	Radziewicz et al.	709/224	6,009,410	12/1999	LeMole et al.	709/219
5,864,823	1/1999	Levitan	105/14	6,009,465	12/1999	Decker et al.	709/219
				6,018,764	1/2000	Field et al.	709/217

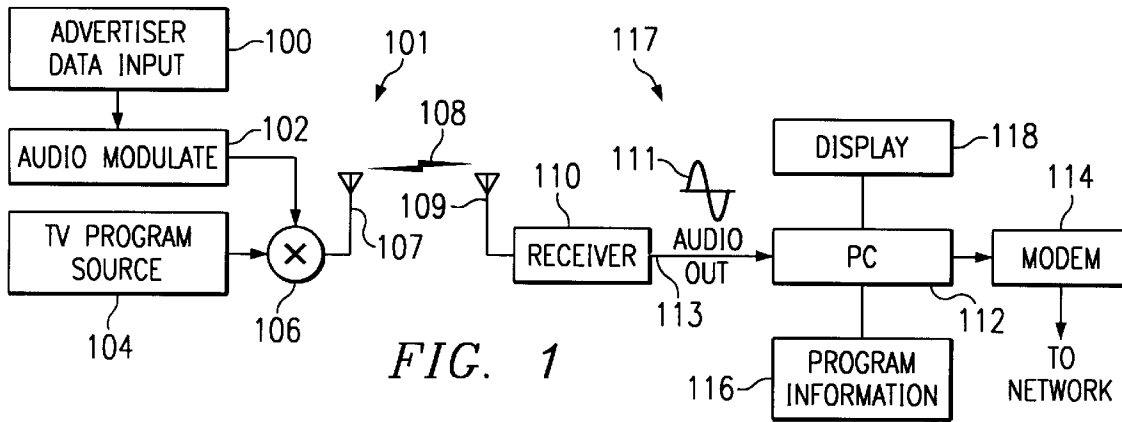


FIG. 1

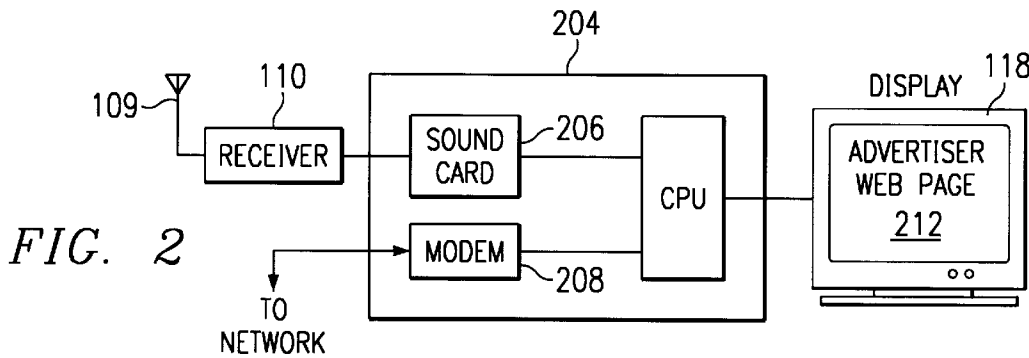


FIG. 2

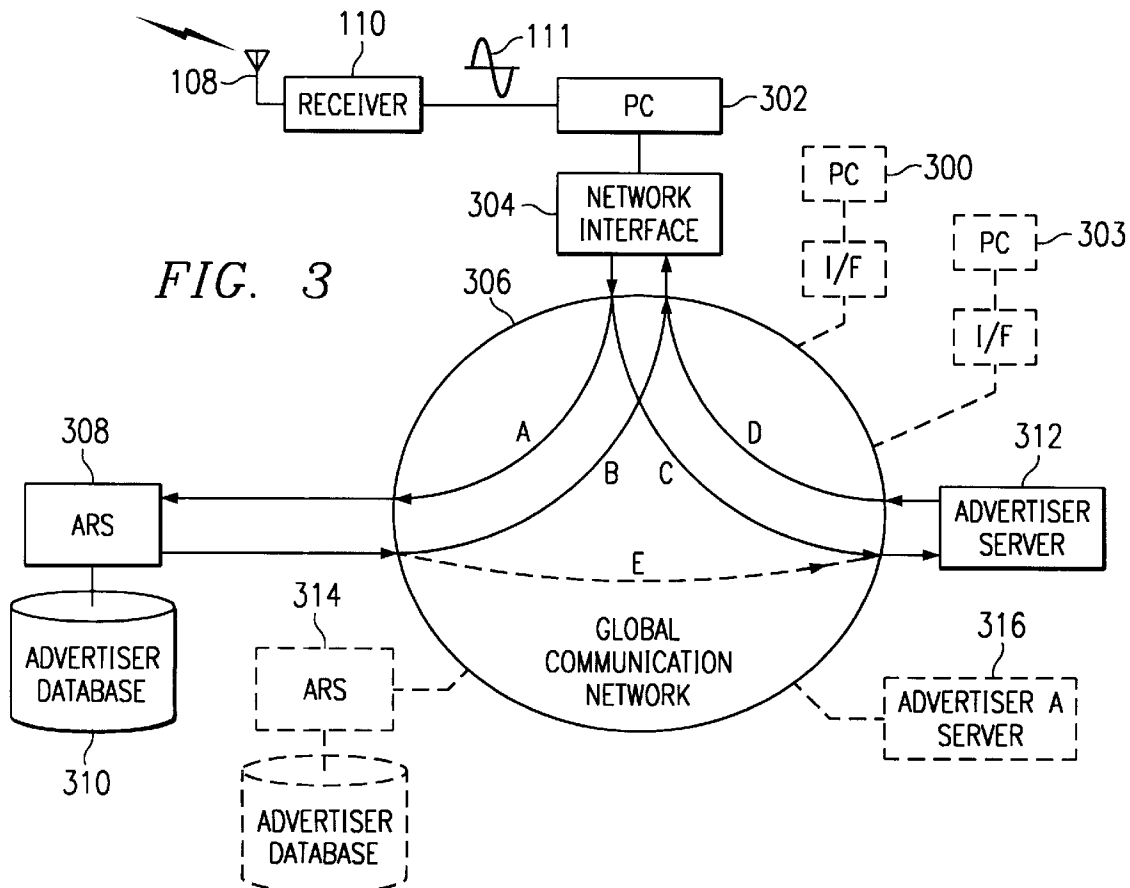


FIG. 3

PATH A: SOURCE TO ARS



FIG. 4a

PATH B: ARS TO SOURCE



FIG. 4b

PATH C: SOURCE TO ADVERTISER



FIG. 4c

PATH D: ADVERTISER TO SOURCE



FIG. 4d

PATH E: ARS TO ADVERTISER (OPTIONAL)

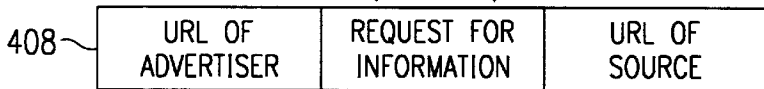


FIG. 4e

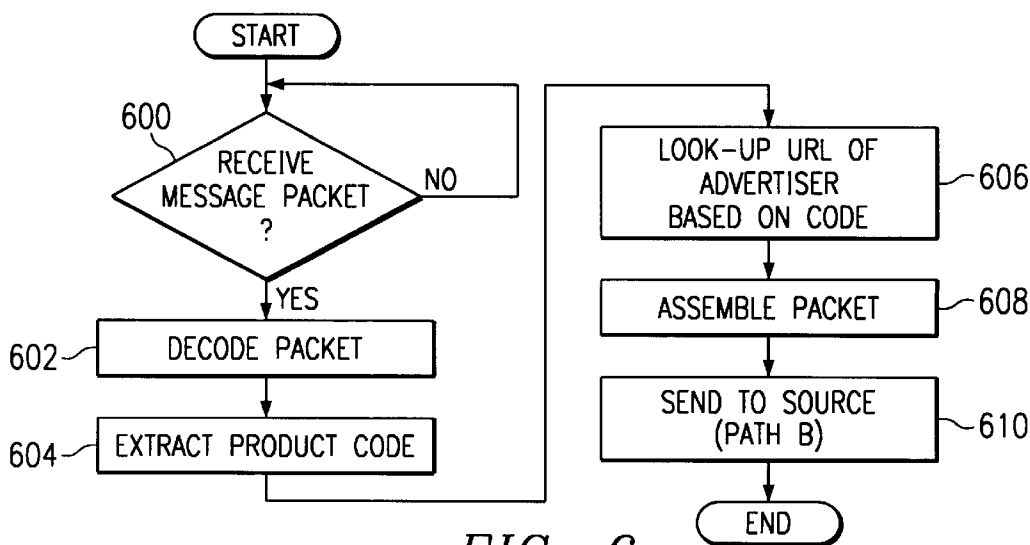


FIG. 6

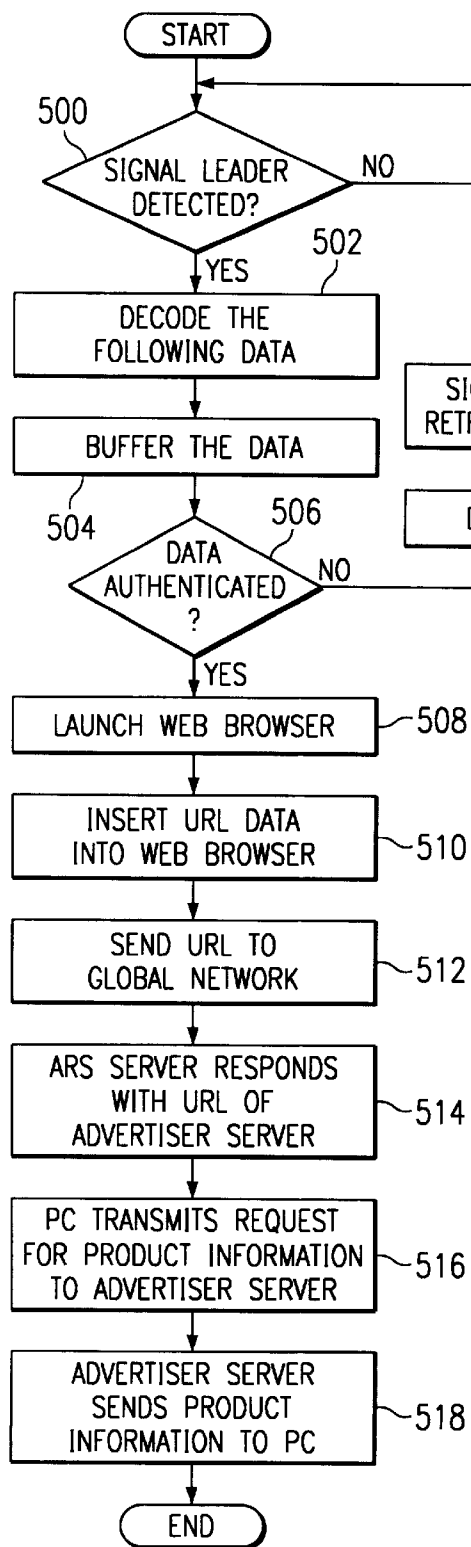


FIG. 5

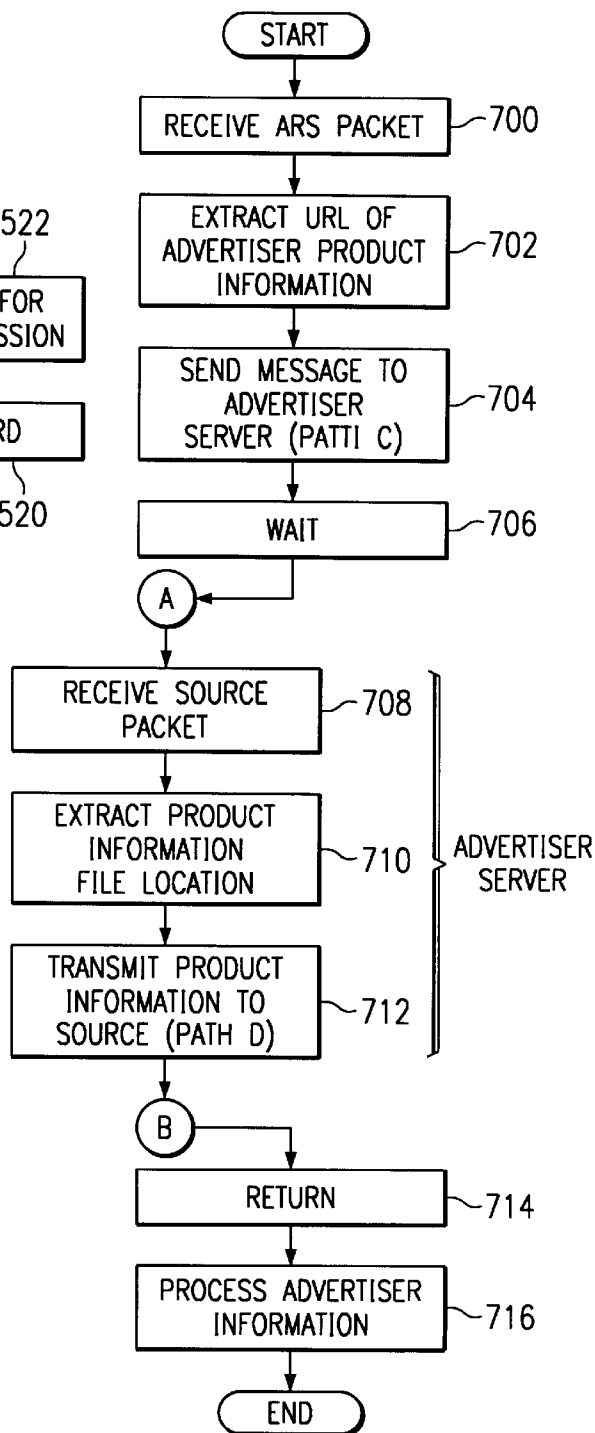


FIG. 7

Explore Litigation Insights

Docket Alarm provides insights to develop a more informed litigation strategy and the peace of mind of knowing you're on top of things.

Real-Time Litigation Alerts



Keep your litigation team up-to-date with **real-time alerts** and advanced team management tools built for the enterprise, all while greatly reducing PACER spend.

Our comprehensive service means we can handle Federal, State, and Administrative courts across the country.

Advanced Docket Research



With over 230 million records, Docket Alarm's cloud-native docket research platform finds what other services can't. Coverage includes Federal, State, plus PTAB, TTAB, ITC and NLRB decisions, all in one place.

Identify arguments that have been successful in the past with full text, pinpoint searching. Link to case law cited within any court document via Fastcase.

Analytics At Your Fingertips



Learn what happened the last time a particular judge, opposing counsel or company faced cases similar to yours.

Advanced out-of-the-box PTAB and TTAB analytics are always at your fingertips.

API

Docket Alarm offers a powerful API (application programming interface) to developers that want to integrate case filings into their apps.

LAW FIRMS

Build custom dashboards for your attorneys and clients with live data direct from the court.

Automate many repetitive legal tasks like conflict checks, document management, and marketing.

FINANCIAL INSTITUTIONS

Litigation and bankruptcy checks for companies and debtors.

E-DISCOVERY AND LEGAL VENDORS

Sync your system to PACER to automate legal marketing.