



US005708584A

# United States Patent [19]

[11] Patent Number: **5,708,584**

Doi et al.

[45] Date of Patent: **Jan. 13, 1998**

[54] **VEHICLE RUNNING MODE DETECTING SYSTEM**

### FOREIGN PATENT DOCUMENTS

61-146644 7/1996 Japan .

[75] Inventors: **Ayumu Doi; Yasunori Yamamoto; Hideki Nishitake; Tomohiko Adachi,** all of Hiroshima-ken, Japan

*Primary Examiner*—Gary Chin  
*Attorney, Agent, or Firm*—Sixbey, Friedman, Leedom & Ferguson, P.C.; Gerald J. Ferguson, Jr.

[73] Assignee: **Mazda Motor Corporation,** Hiroshima, Japan

### [57] ABSTRACT

In a vehicle running mode detecting system, a relative speed of a vehicle, equipped with the vehicle running mode detecting system, to a forward object is calculated on the basis of a time elapsed from a reference time based on which the time elapsed is measured and a change in the distance between the vehicle and the forward object during the time elapsed. Whether the vehicle is running in a constant distance mode where the distance between the vehicle and the forward object is kept substantially constant or in a varying distance mode where the vehicle is accelerating or decelerating relative to the forward object and the distance between the vehicle and the forward object is varying is determined on the basis of the change in the distance between the vehicle and the forward object. The reference time is updated less frequently when the vehicle is running in the constant distance mode than when the vehicle is running in the varying distance mode.

[21] Appl. No.: **525,218**

[22] Filed: **Sep. 8, 1995**

### [30] Foreign Application Priority Data

Sep. 14, 1994 [JP] Japan ..... 6-220294

[51] Int. Cl.<sup>6</sup> ..... **B60T 8/32**

[52] U.S. Cl. .... **364/426.044; 364/461; 180/169; 180/170; 340/903**

[58] Field of Search ..... **364/426.041, 426.044, 364/460, 461, 565; 180/167-170, 176-179; 123/350, 352; 342/454, 455; 340/903, 904**

### [56] References Cited

#### U.S. PATENT DOCUMENTS

- 4,621,705 11/1986 Etoh ..... 180/169
- 5,053,979 10/1991 Etoh ..... 364/426.044
- 5,396,426 3/1995 Hibino et al. .... 364/426.044
- 5,420,792 5/1995 Butsuen et al. .... 364/461

**9 Claims, 5 Drawing Sheets**

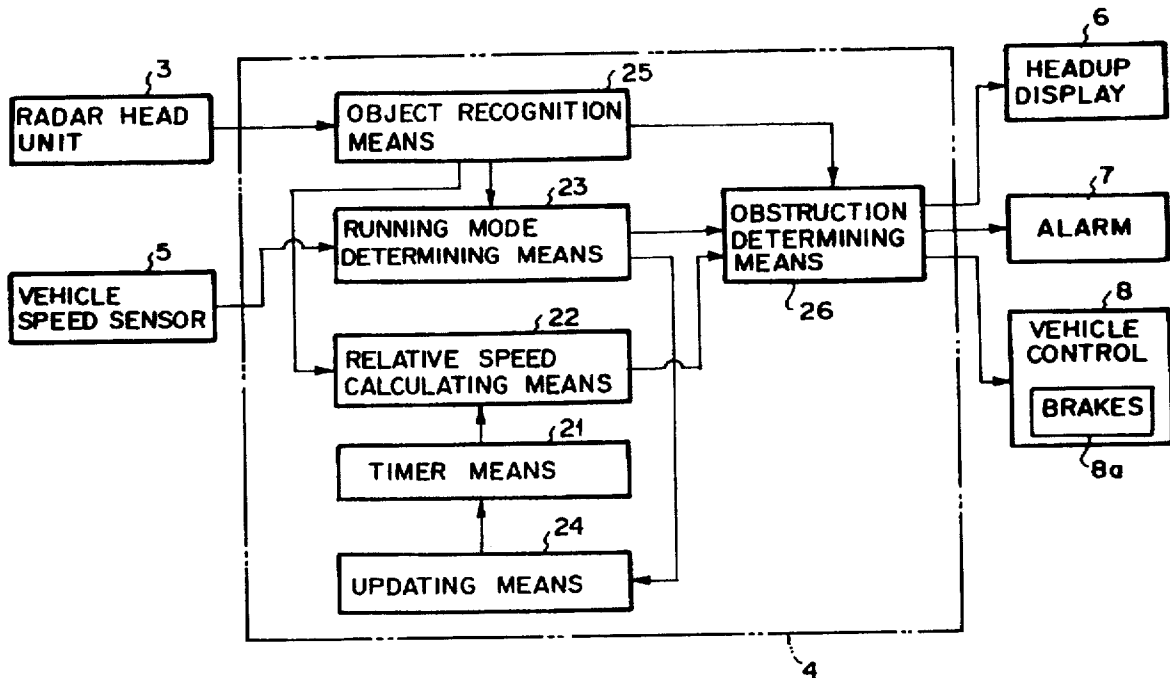


FIG. 1

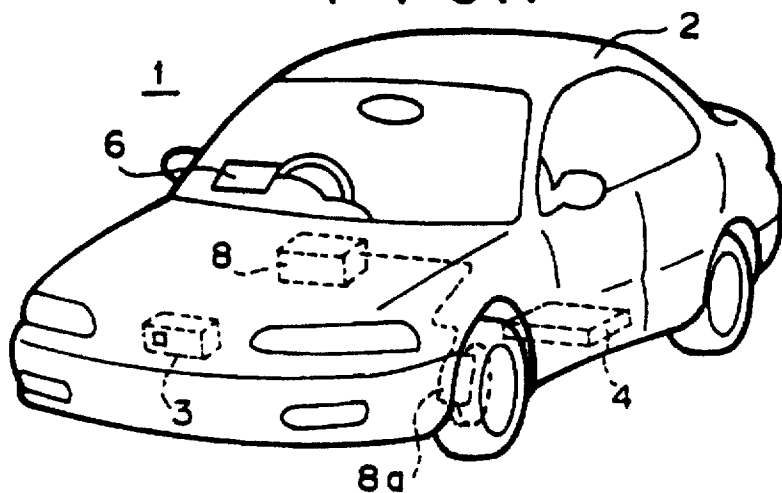
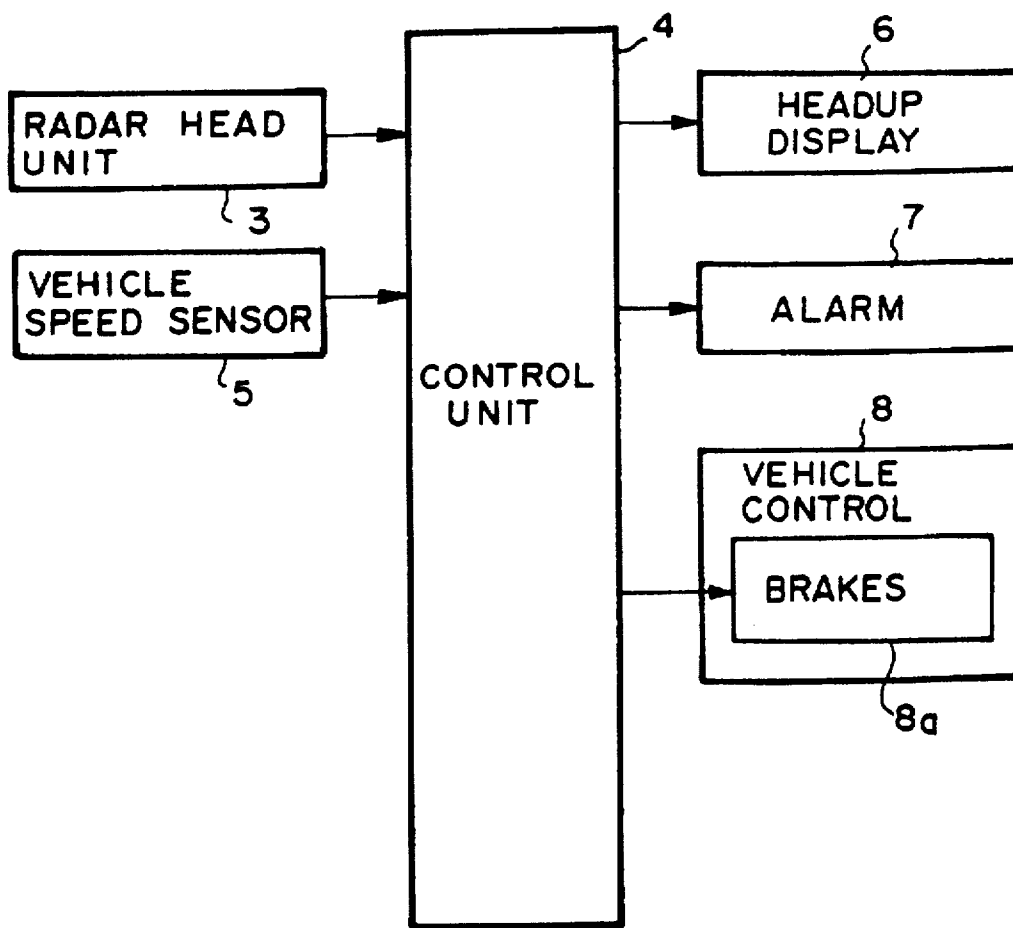


FIG. 2



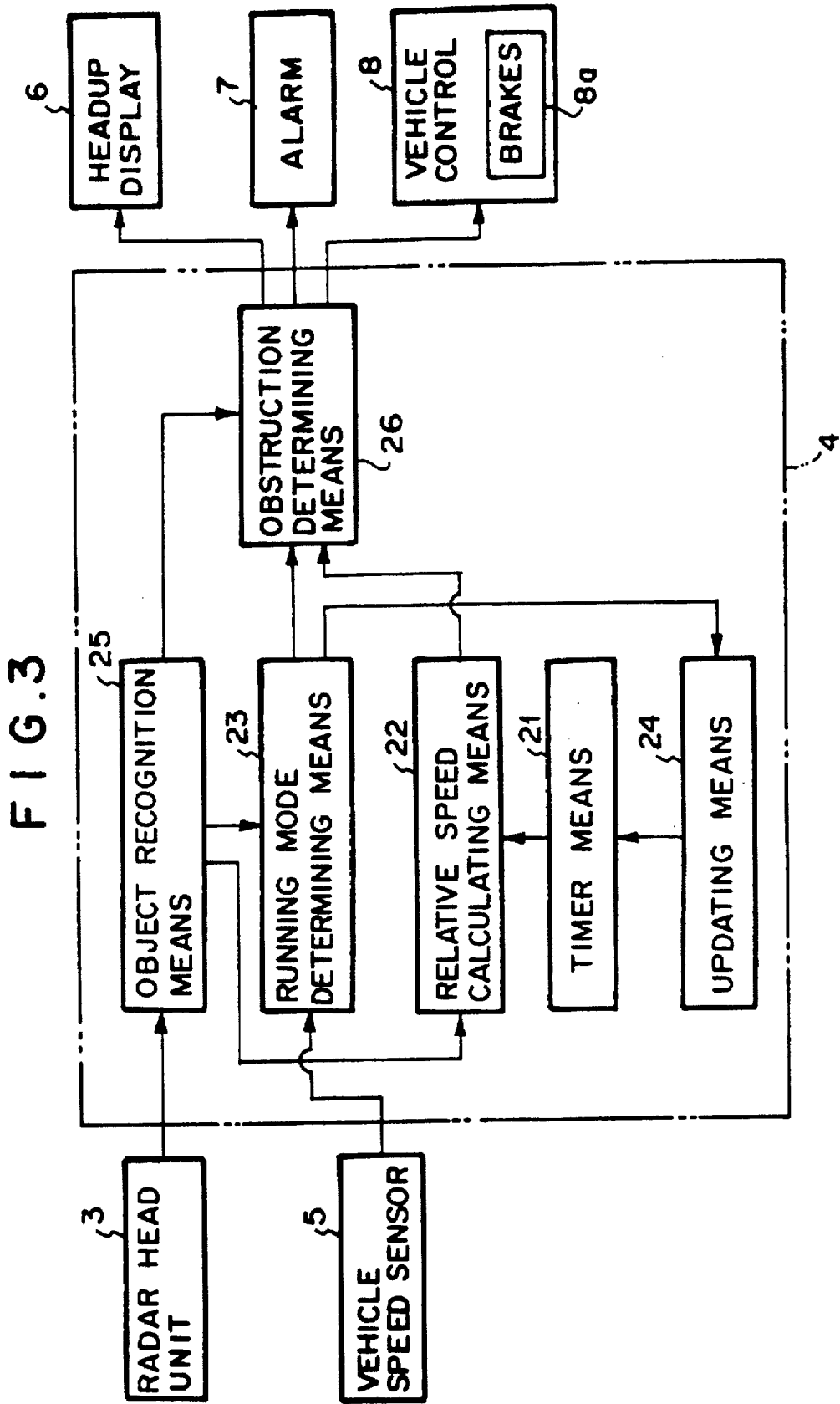


FIG. 4

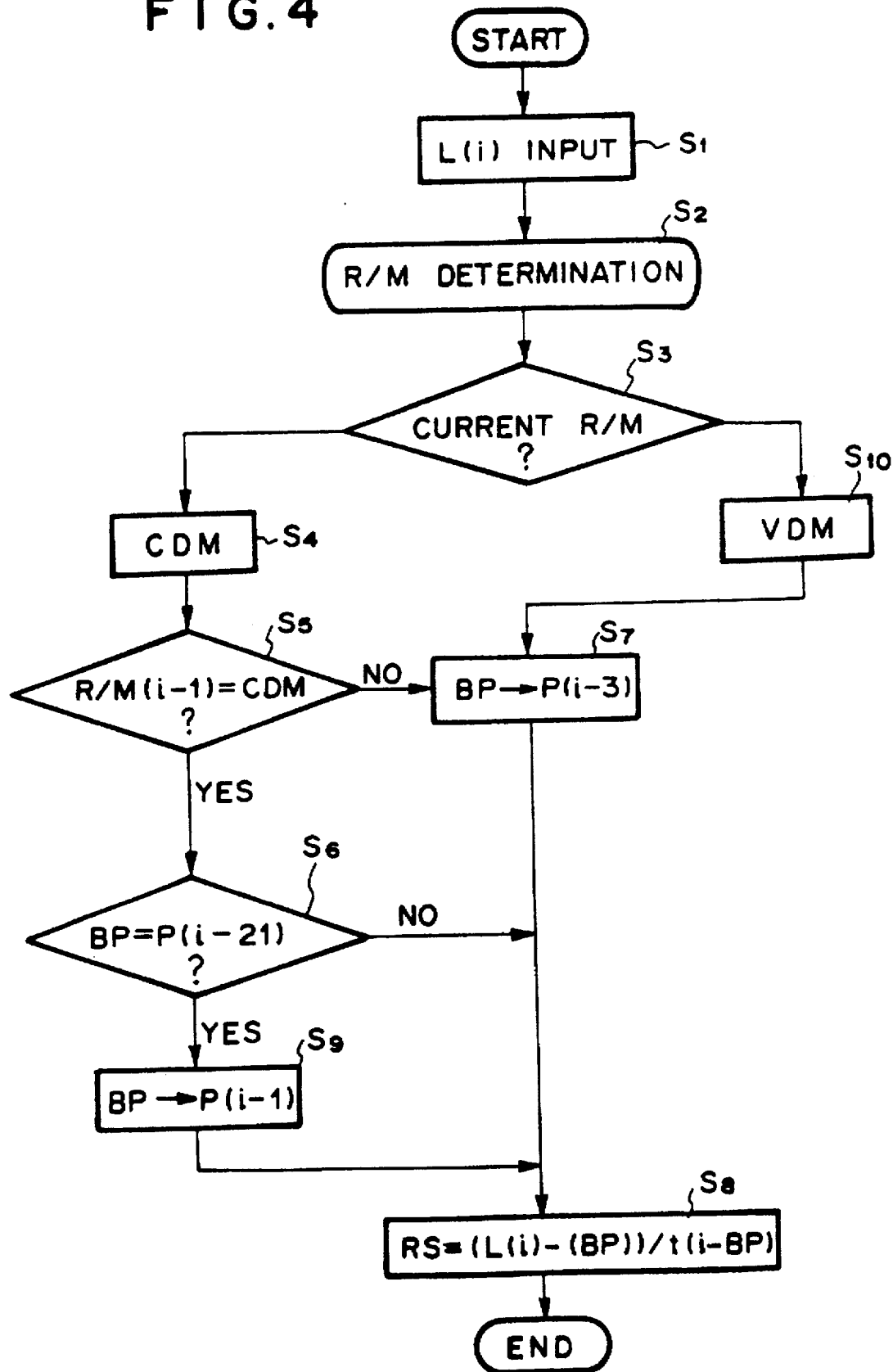
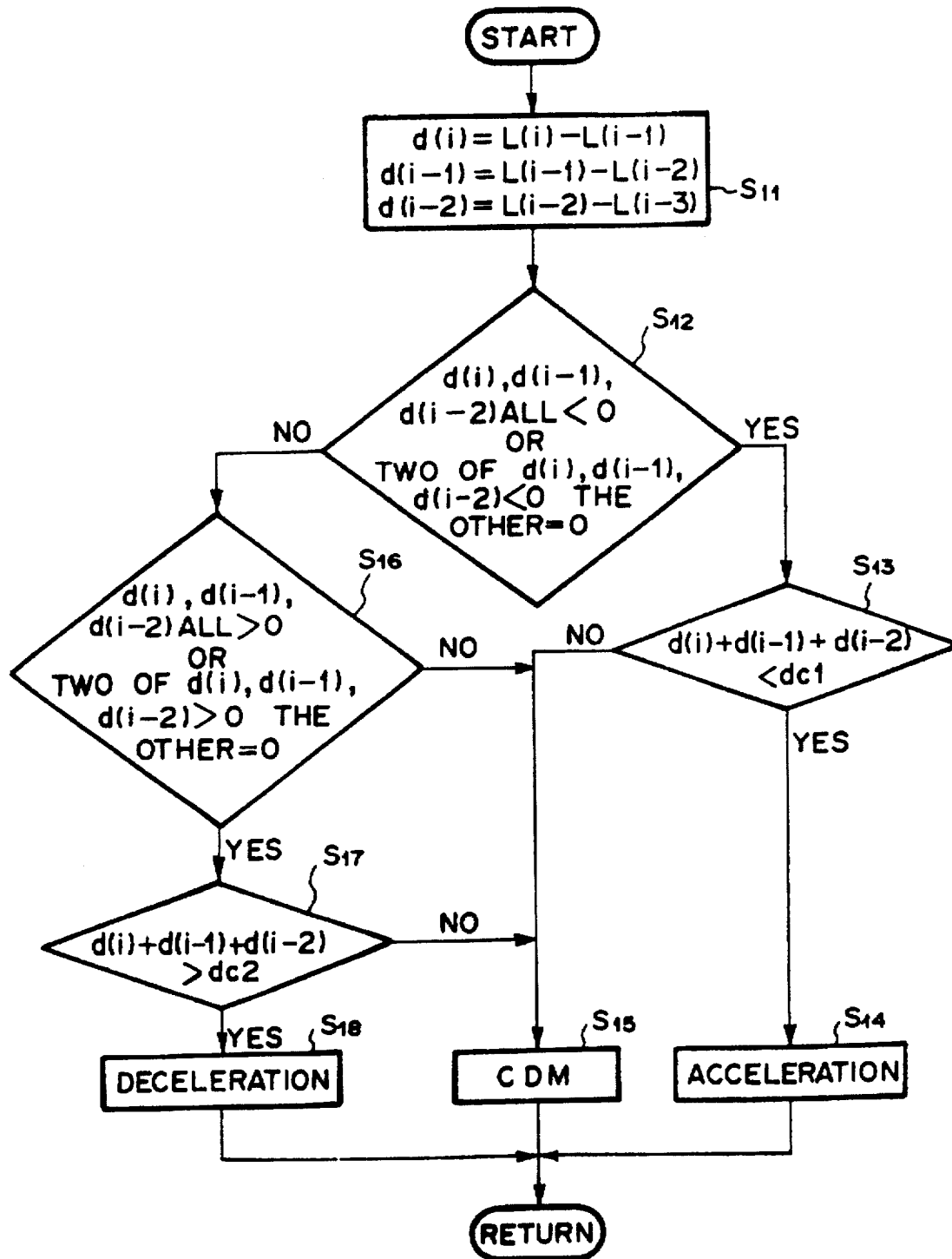


FIG. 5



# Explore Litigation Insights

Docket Alarm provides insights to develop a more informed litigation strategy and the peace of mind of knowing you're on top of things.

## Real-Time Litigation Alerts



Keep your litigation team up-to-date with **real-time alerts** and advanced team management tools built for the enterprise, all while greatly reducing PACER spend.

Our comprehensive service means we can handle Federal, State, and Administrative courts across the country.

## Advanced Docket Research



With over 230 million records, Docket Alarm's cloud-native docket research platform finds what other services can't. Coverage includes Federal, State, plus PTAB, TTAB, ITC and NLRB decisions, all in one place.

Identify arguments that have been successful in the past with full text, pinpoint searching. Link to case law cited within any court document via Fastcase.

## Analytics At Your Fingertips



Learn what happened the last time a particular judge, opposing counsel or company faced cases similar to yours.

Advanced out-of-the-box PTAB and TTAB analytics are always at your fingertips.

## API

Docket Alarm offers a powerful API (application programming interface) to developers that want to integrate case filings into their apps.

## LAW FIRMS

Build custom dashboards for your attorneys and clients with live data direct from the court.

Automate many repetitive legal tasks like conflict checks, document management, and marketing.

## FINANCIAL INSTITUTIONS

Litigation and bankruptcy checks for companies and debtors.

## E-DISCOVERY AND LEGAL VENDORS

Sync your system to PACER to automate legal marketing.