

[54] TWO-CYCLE ENGINE WITH ELECTRONIC FUEL INJECTION

4,821,210 4/1989 Howell et al. 364/551.01
4,823,290 4/1989 Fasack et al. 364/550
4,843,576 6/1989 Smith et al. 364/557

[75] Inventor: Ronald E. Chasteen, Lakeside, Ariz.

Primary Examiner—Raymond A. Nelli
Attorney, Agent, or Firm—Bruce G. Klaas; William P. O'Meara

[73] Assignee: Injection Research Specialists, Inc., Colorado Springs, Colo.

[21] Appl. No.: 345,081

[57] ABSTRACT

[22] Filed: Apr. 28, 1989

A fuel injection system for a two-stroke cycle engine comprising an air manifold; a throttle valve; a fuel injector; a fuel supply system including a fuel pump; a battery voltage sensor; an air temperature sensor; an engine speed sensor; a timing sensor; a barometric pressure sensor; a throttle position sensor; a first data processor for receiving and processing sensing signals for determining fuel injector duration and timing and fuel pump operating speed; a first data processor temperature sensor for sensing the relative temperature of certain electronic components in the first data processor; a heater operatively associated with the first data processor electronic components for selectively heating the electronic components; and a second data processor operable independently of the first data processor for receiving an electronic component temperature sensing signal and for generating a control signal to the heater responsive thereto for heating the components when the temperature thereof is below a predetermined minimum value.

Related U.S. Application Data

[63] Continuation of Ser. No. 119,626, Nov. 12, 1987, abandoned.

[51] Int. Cl.⁴ F02M 7/00; G05D 23/00

[52] U.S. Cl. 123/478; 364/557; 236/DIG. 8

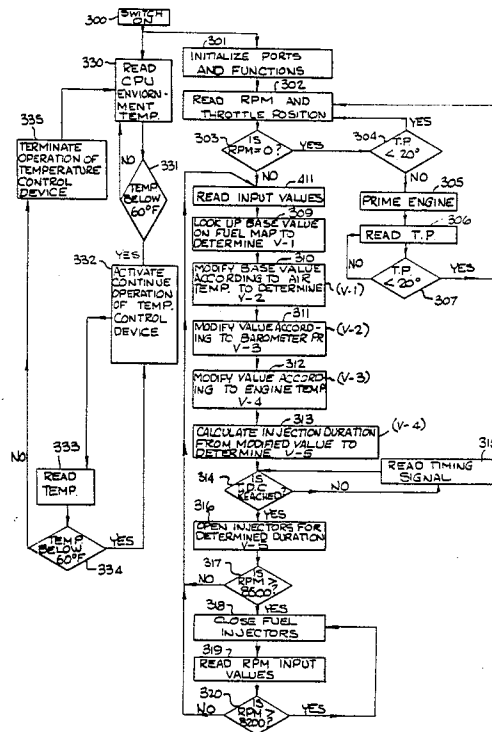
[58] Field of Search 123/478, 480, 73 A, 123/65 BA, 383, 502, 440, 492, 489; 364/186, 550, 557, 510, 555.01; 236/DIG. 8

References Cited

U.S. PATENT DOCUMENTS

4,411,385	10/1983	Lamkewitz	236/DIG. 8
4,607,962	8/1986	Nagao et al.	364/557
4,675,826	6/1987	Gentry et al.	364/557
4,739,492	4/1988	Cochran	364/510
4,751,909	6/1988	Otobe	123/492
4,753,204	6/1988	Kojima et al.	123/440
4,763,629	8/1988	Okazaki et al.	123/489
4,766,868	8/1988	Shibata	123/440
4,805,122	2/1989	McDavid et al.	364/557

1 Claim, 5 Drawing Sheets



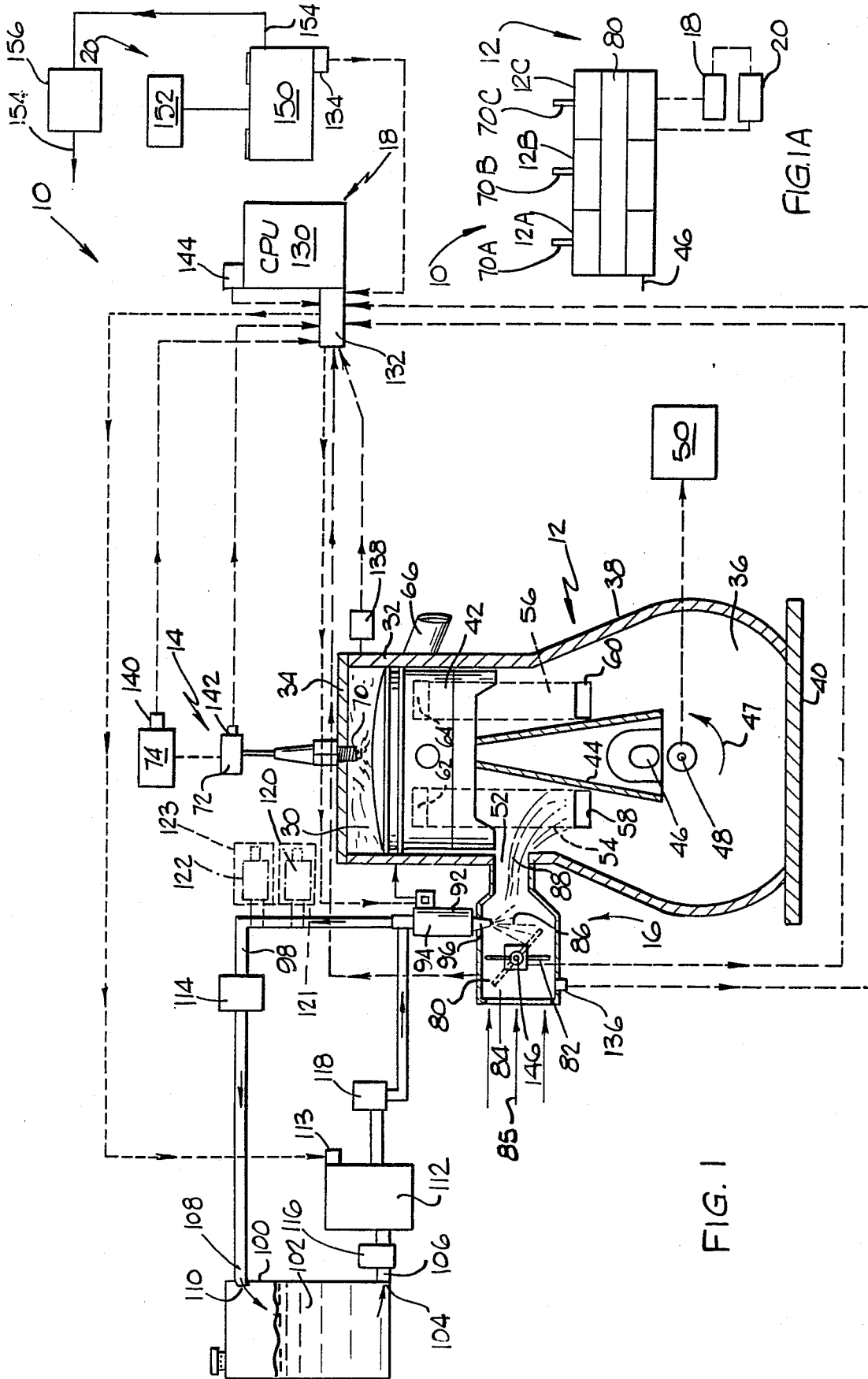


FIG. 1

FIG. 1A

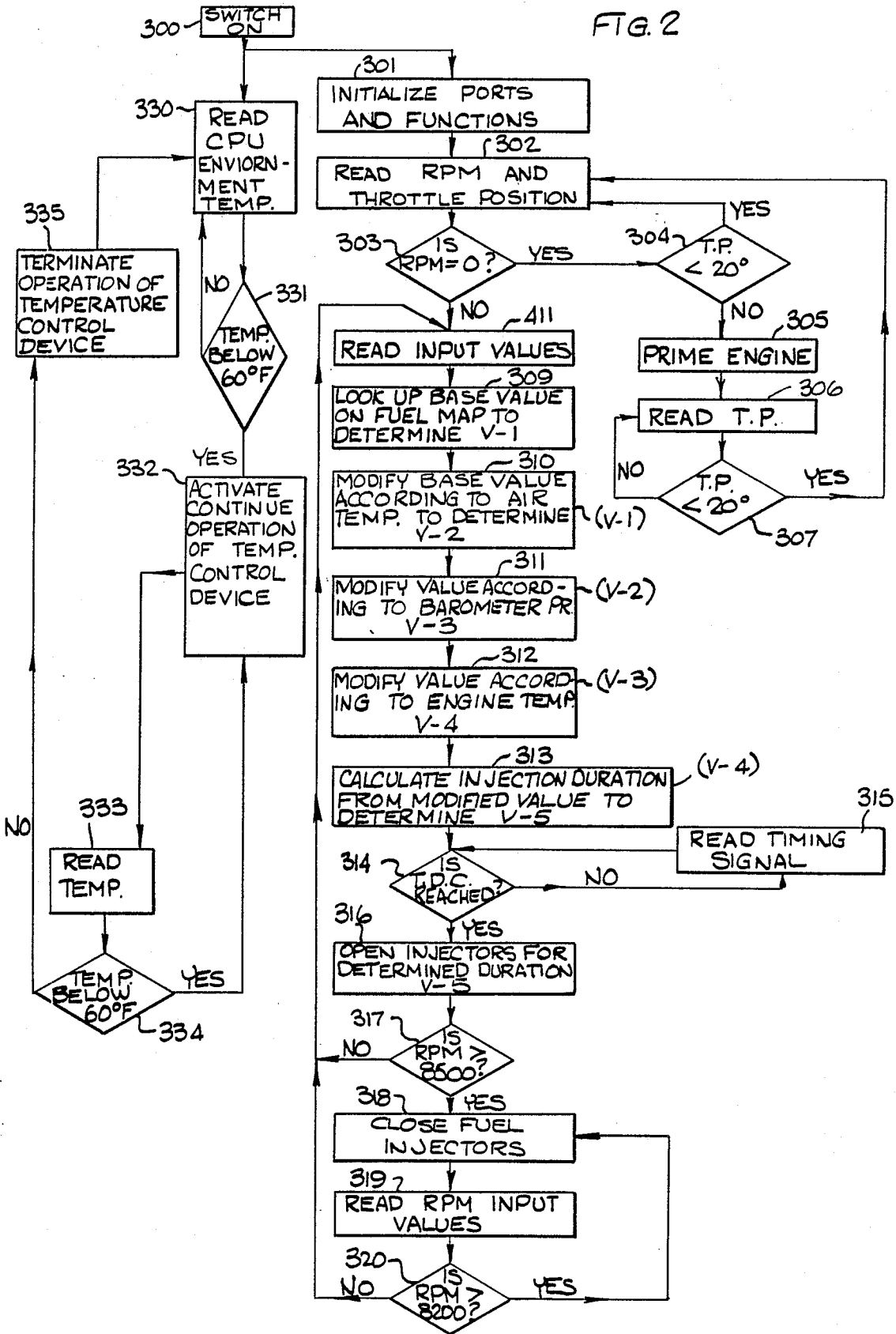


FIG. 3

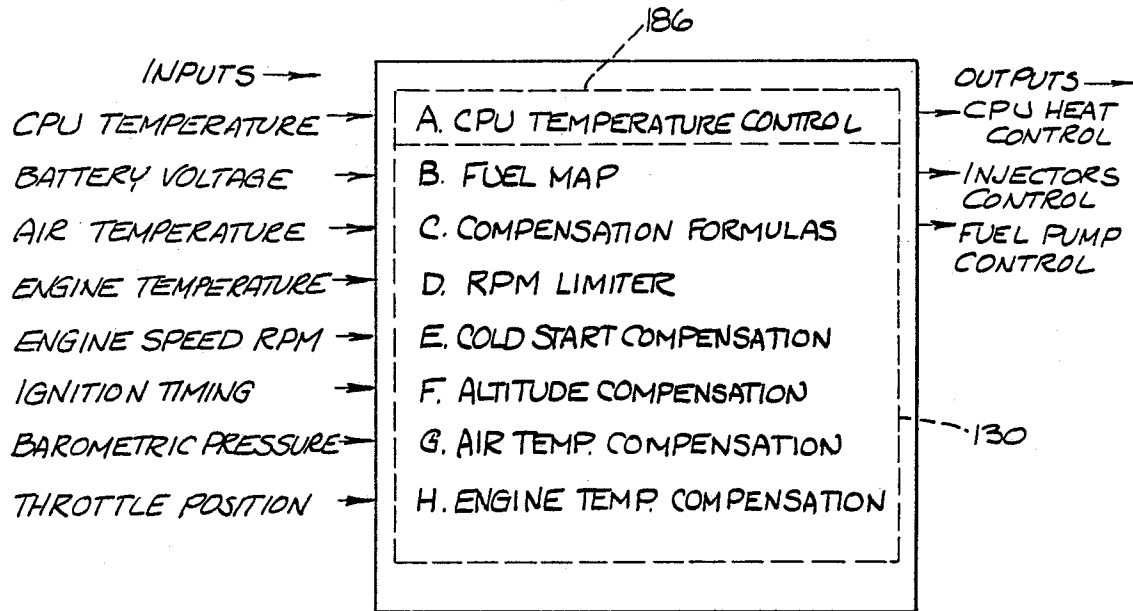
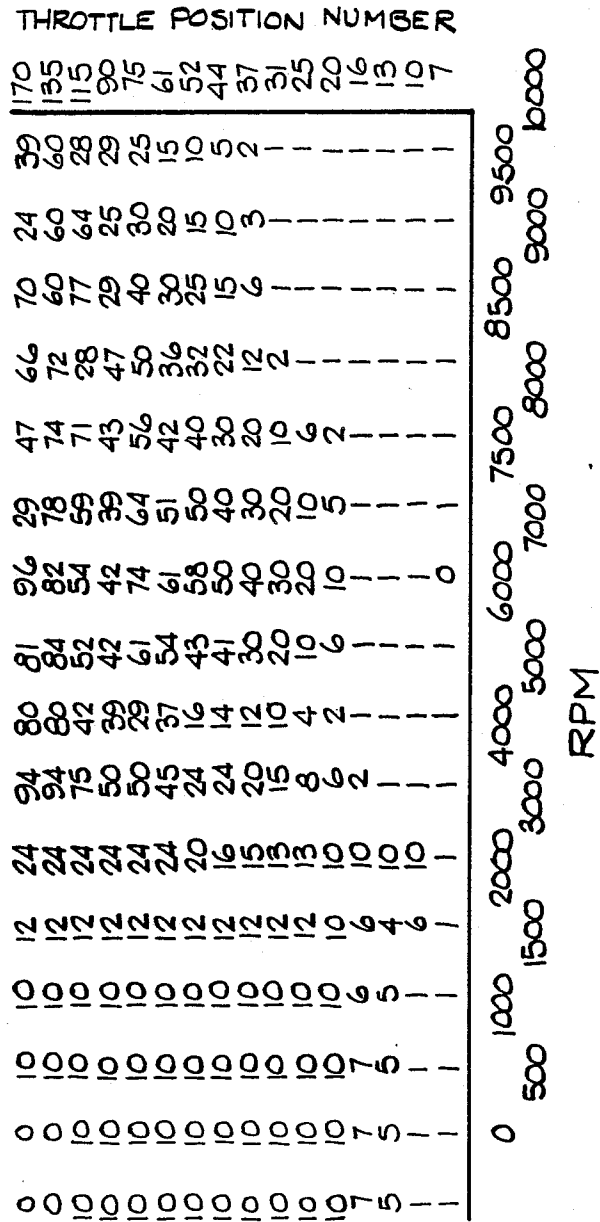


FIG. 4



Explore Litigation Insights

Docket Alarm provides insights to develop a more informed litigation strategy and the peace of mind of knowing you're on top of things.

Real-Time Litigation Alerts



Keep your litigation team up-to-date with **real-time alerts** and advanced team management tools built for the enterprise, all while greatly reducing PACER spend.

Our comprehensive service means we can handle Federal, State, and Administrative courts across the country.

Advanced Docket Research



With over 230 million records, Docket Alarm's cloud-native docket research platform finds what other services can't. Coverage includes Federal, State, plus PTAB, TTAB, ITC and NLRB decisions, all in one place.

Identify arguments that have been successful in the past with full text, pinpoint searching. Link to case law cited within any court document via Fastcase.

Analytics At Your Fingertips



Learn what happened the last time a particular judge, opposing counsel or company faced cases similar to yours.

Advanced out-of-the-box PTAB and TTAB analytics are always at your fingertips.

API

Docket Alarm offers a powerful API (application programming interface) to developers that want to integrate case filings into their apps.

LAW FIRMS

Build custom dashboards for your attorneys and clients with live data direct from the court.

Automate many repetitive legal tasks like conflict checks, document management, and marketing.

FINANCIAL INSTITUTIONS

Litigation and bankruptcy checks for companies and debtors.

E-DISCOVERY AND LEGAL VENDORS

Sync your system to PACER to automate legal marketing.