

Ex. GOOG 1003



# United States Patent [19]

[11] Patent Number: 5,717,496

Satoh et al.

[45] Date of Patent: Feb. 10, 1998

[54] ELECTRONIC IMAGING APPARATUS

[56] References Cited

[75] Inventors: Yoshiaki Satoh; Yawara Saitoh, both of Tokyo; Izuru Kiyokawa, Yokohama, all of Japan

[73] Assignee: Olympus Optical Co., Ltd., Tokyo, Japan

[21] Appl. No.: 305,776

[22] Filed: Sep. 14, 1994

### Related U.S. Application Data

[62] Division of Ser. No. 154,438, Nov. 19, 1993, abandoned.

### [30] Foreign Application Priority Data

Nov. 19, 1992	[JP]	Japan	4-333707
Dec. 17, 1992	[JP]	Japan	4-337007
Jan. 21, 1993	[JP]	Japan	5-007879
Mar. 1, 1993	[JP]	Japan	5-040178

[51] Int. Cl.<sup>6</sup> H04N 1/00

[52] U.S. Cl. 358/402; 358/404; 358/444; 395/114

[58] Field of Search 358/400, 402, 358/444, 404, 498, 471, 474, 479; 348/207, 230, 231; 395/114, 115

### U.S. PATENT DOCUMENTS

4,567,515	1/1986	Schumacher	358/294
5,138,459	8/1992	Roberts et al.	358/209
5,231,501	7/1993	Sakai	358/209
5,291,302	3/1994	Gordon	358/404
5,349,448	9/1994	Hirai	358/444

Primary Examiner—Thomas D. Lee  
Assistant Examiner—Jerome Grant, II  
Attorney, Agent, or Firm—Cushman, Darby & Cushman IP Group of Pillsbury, Madison & Sutro LLP

### [57] ABSTRACT

In an electronic imaging apparatus, image information of an image signal photoelectrically converted from an image incident is stored in image information storing means in a format dependent upon a type of the applied storage device. Provided therein are communication means for transmitting and/or receiving image information generated in this apparatus or the other equivalent apparatuses while an operation mode of the apparatus is set for communication and switch means for causing the communication means to start a communication mode operation.

3 Claims, 98 Drawing Sheets

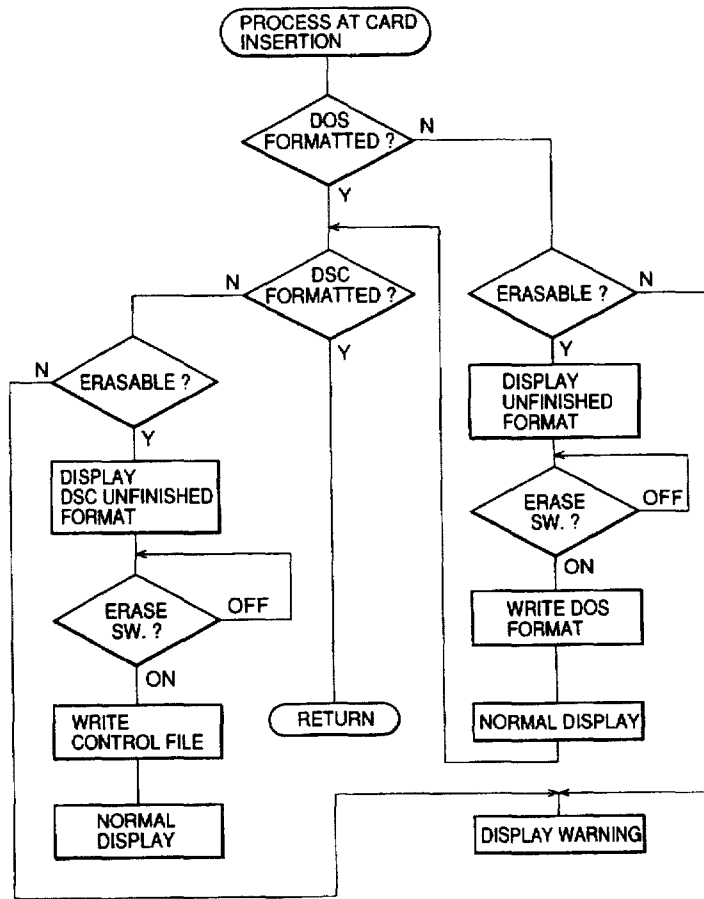


FIG. 1

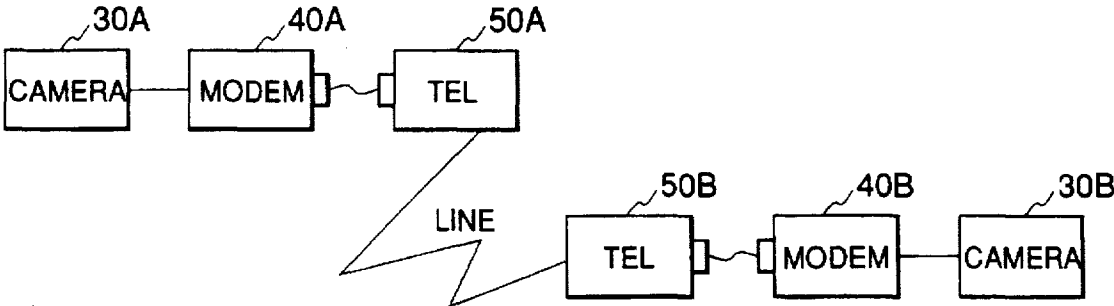


FIG. 6

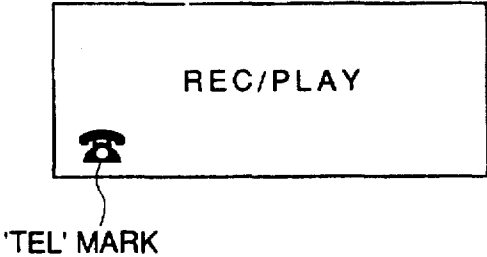


FIG.2

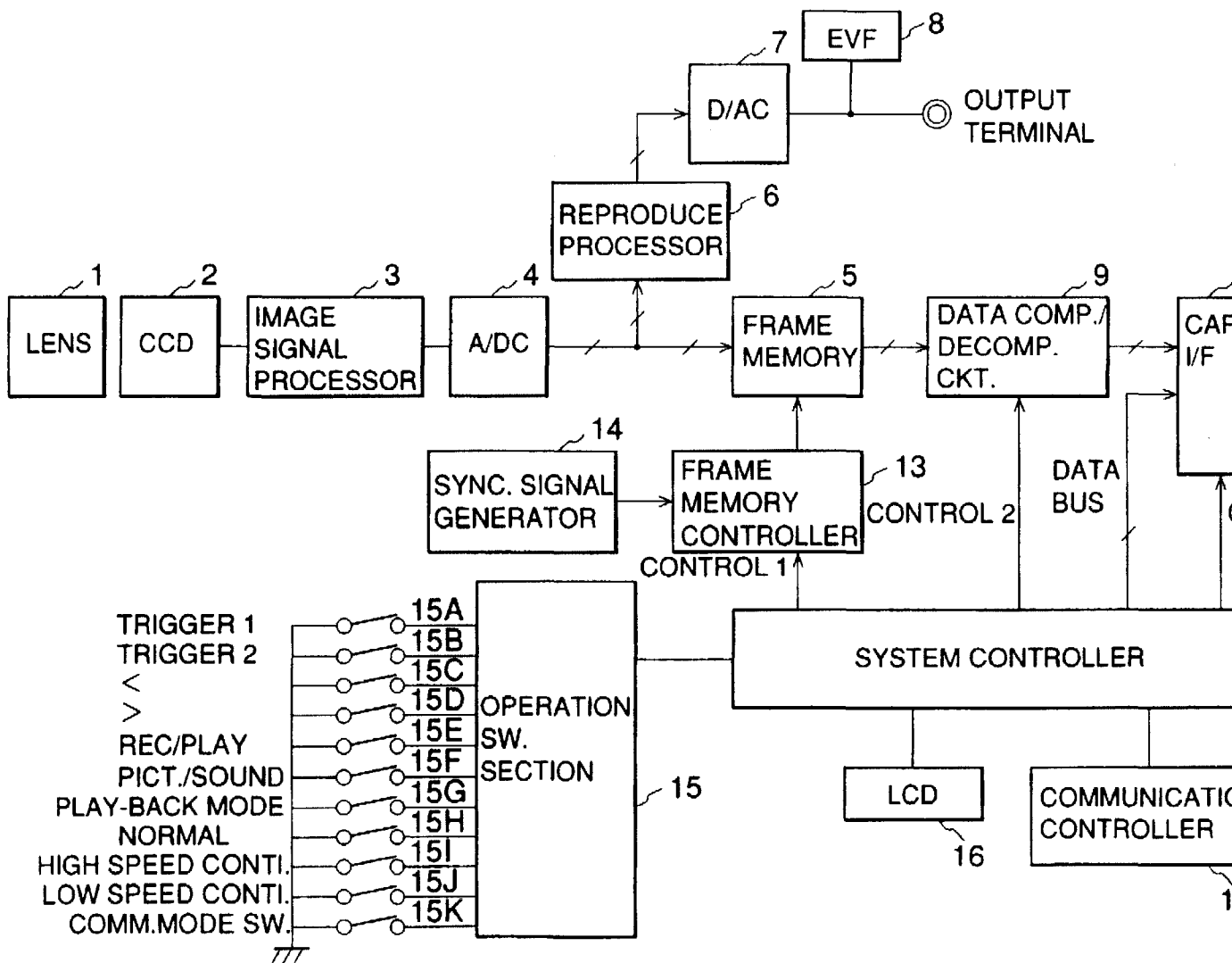
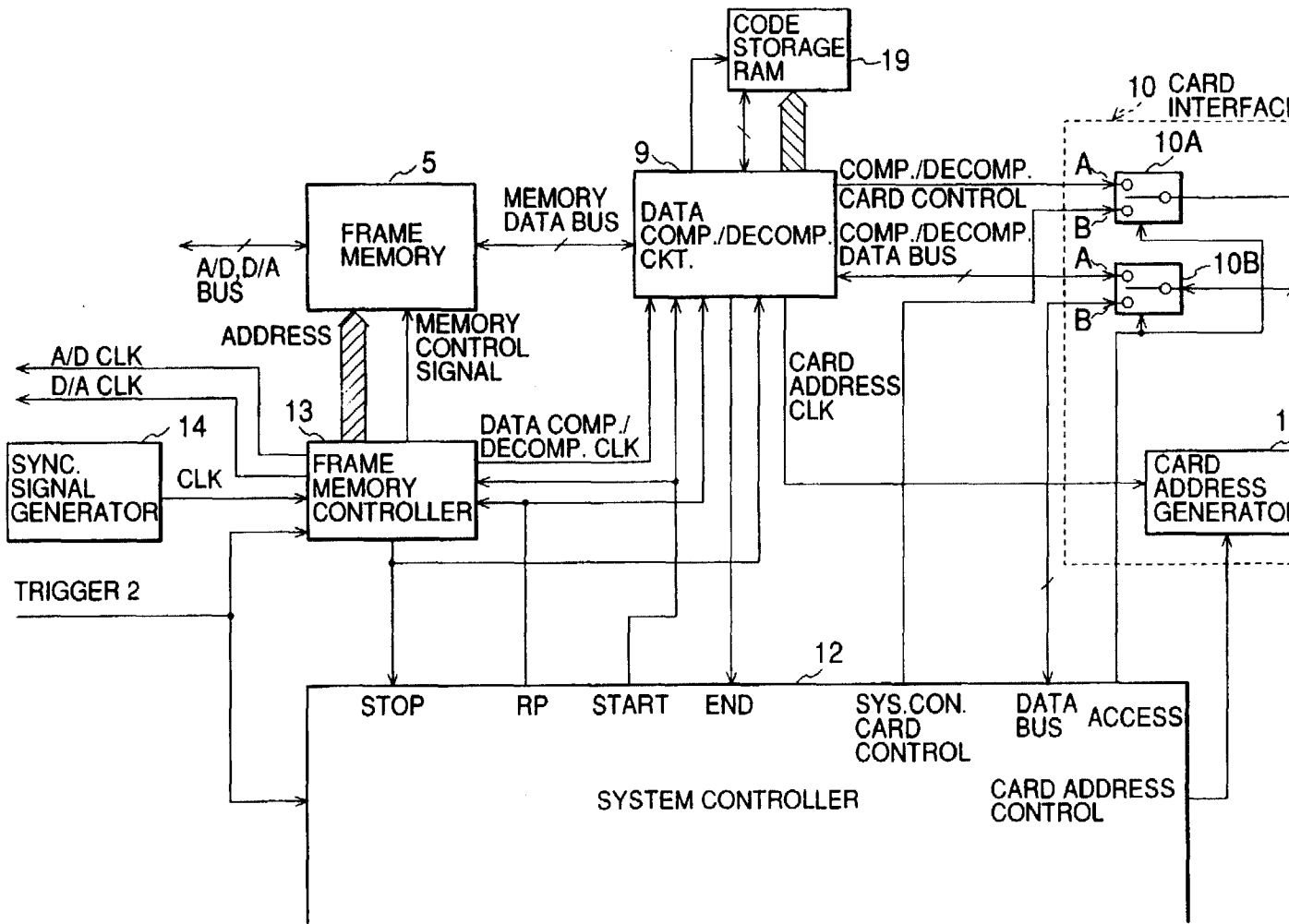


FIG. 3



# Explore Litigation Insights

Docket Alarm provides insights to develop a more informed litigation strategy and the peace of mind of knowing you're on top of things.

## Real-Time Litigation Alerts



Keep your litigation team up-to-date with **real-time alerts** and advanced team management tools built for the enterprise, all while greatly reducing PACER spend.

Our comprehensive service means we can handle Federal, State, and Administrative courts across the country.

## Advanced Docket Research



With over 230 million records, Docket Alarm's cloud-native docket research platform finds what other services can't. Coverage includes Federal, State, plus PTAB, TTAB, ITC and NLRB decisions, all in one place.

Identify arguments that have been successful in the past with full text, pinpoint searching. Link to case law cited within any court document via Fastcase.

## Analytics At Your Fingertips



Learn what happened the last time a particular judge, opposing counsel or company faced cases similar to yours.

Advanced out-of-the-box PTAB and TTAB analytics are always at your fingertips.

## API

Docket Alarm offers a powerful API (application programming interface) to developers that want to integrate case filings into their apps.

## LAW FIRMS

Build custom dashboards for your attorneys and clients with live data direct from the court.

Automate many repetitive legal tasks like conflict checks, document management, and marketing.

## FINANCIAL INSTITUTIONS

Litigation and bankruptcy checks for companies and debtors.

## E-DISCOVERY AND LEGAL VENDORS

Sync your system to PACER to automate legal marketing.