



US006085201A

# United States Patent [19]

[11] **Patent Number:** **6,085,201**

Tso

[45] **Date of Patent:** **\*Jul. 4, 2000**

[54] **CONTEXT-SENSITIVE TEMPLATE ENGINE**

5,297,027	3/1994	Morimoto et al. ....	707/501
5,557,723	9/1996	Holt et al. ....	707/506
5,579,467	11/1996	Capps ....	707/507
5,799,268	8/1998	Boguraev ....	704/9
5,905,863	5/1999	Knowles et al. ....	395/200.36

[75] Inventor: **Michael Man-Hak Tso**, Hillsboro, Oreg.

[73] Assignee: **Intel Corporation**, Santa Clara, Calif.

[\*] Notice: This patent issued on a continued prosecution application filed under 37 CFR 1.53(d), and is subject to the twenty year patent term provisions of 35 U.S.C. 154(a)(2).

*Primary Examiner*—Mark R. Powell  
*Assistant Examiner*—Motilewa Good-Johnson  
*Attorney, Agent, or Firm*—Kenyon & Kenyon

## [57] **ABSTRACT**

A template engine generates a context-sensitive text message corresponding to an input text string. The input text string is first decomposed into a set of search words. The template engine then uses those search words to search a database of predefined templates to identify a template that is contextually appropriate for the input text string. The identified template may then be used to generate a responsive text message. The template engine is also able to "learn," dynamically updating the template database to reflect user preferences with respect to templates identified by the template engine as being contextually appropriate for particular search words.

[21] Appl. No.: **08/672,855**

[22] Filed: **Jun. 28, 1996**

[51] **Int. Cl.**<sup>7</sup> ..... **G06F 17/27**

[52] **U.S. Cl.** ..... **707/505**

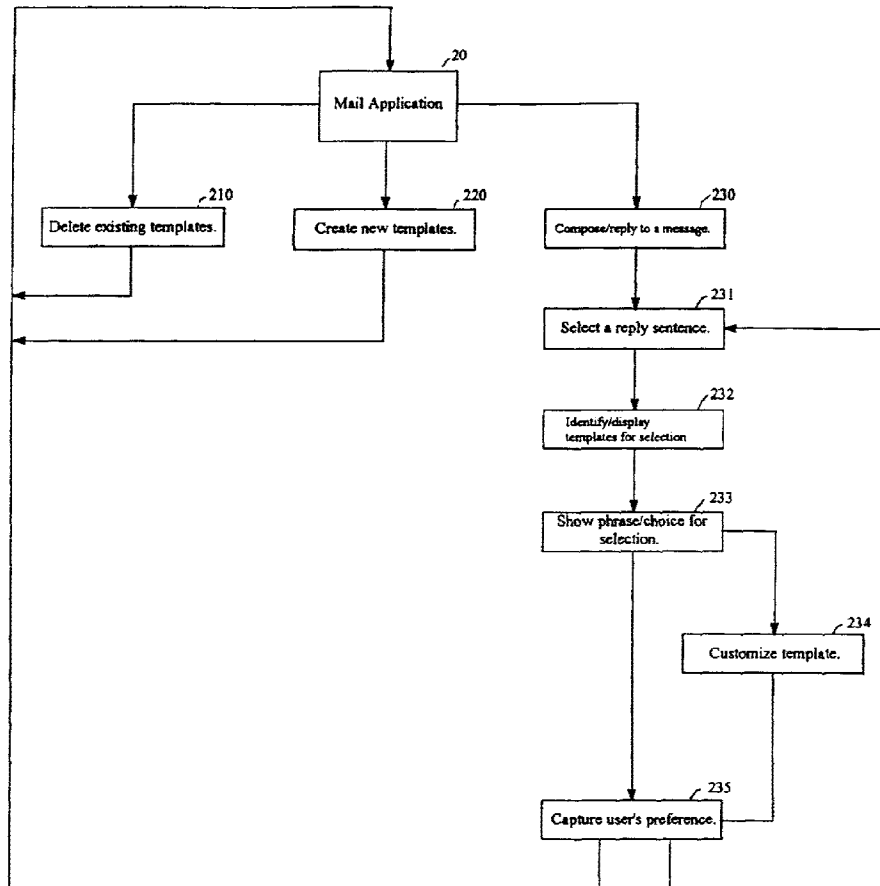
[58] **Field of Search** ..... 707/505-508,  
707/531-533, 908, 501, 513; 395/604, 20,  
77

## [56] **References Cited**

### U.S. PATENT DOCUMENTS

4,879,648 11/1989 Cochran et al. .... 707/507

**18 Claims, 4 Drawing Sheets**



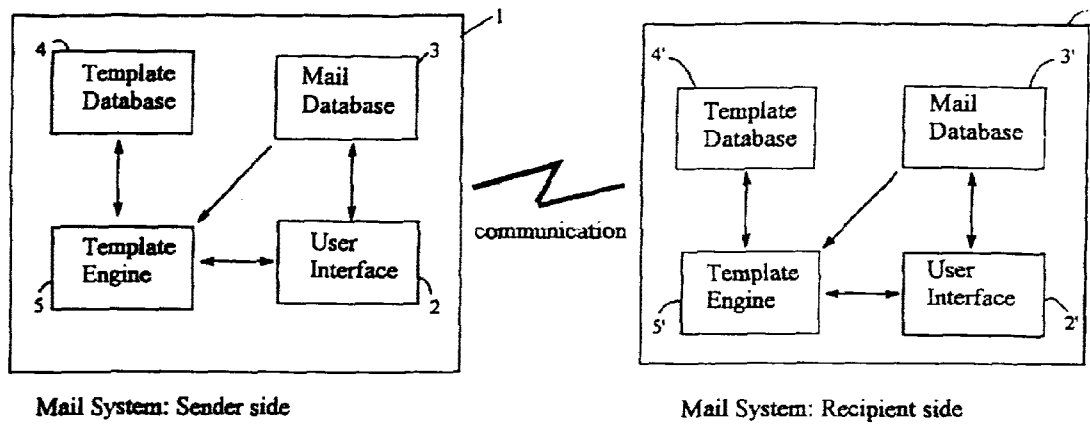
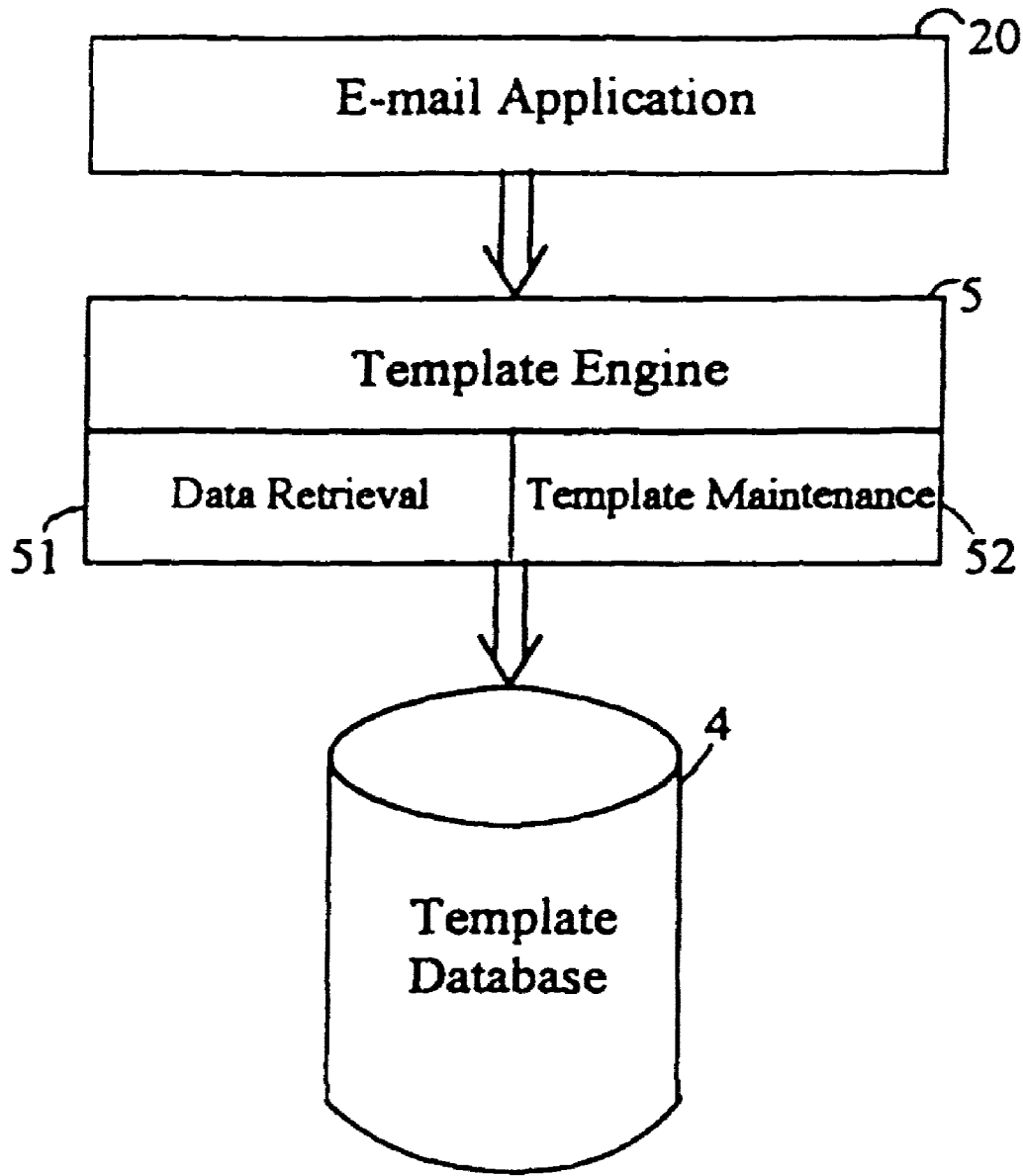


Figure 1



**Figure 2**

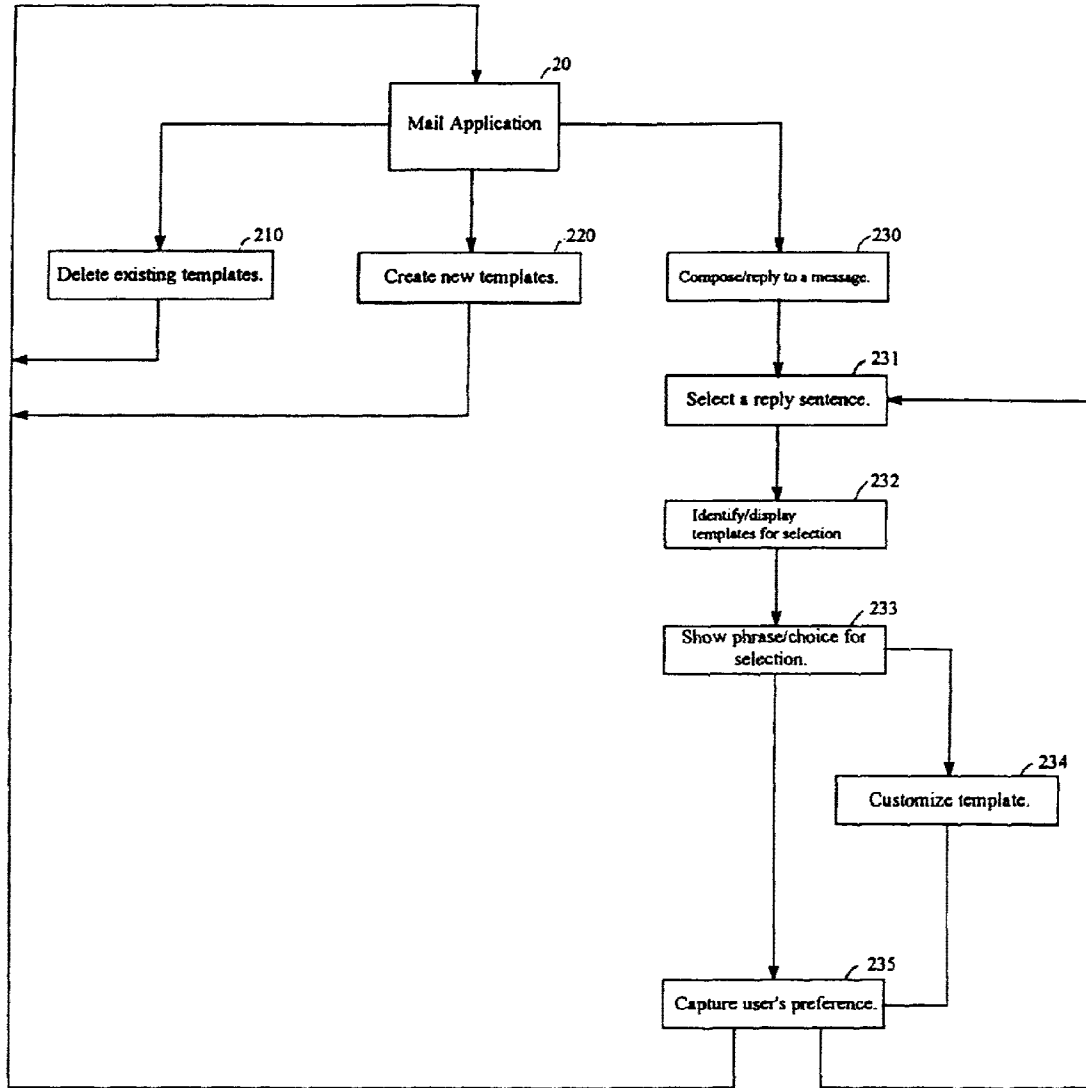
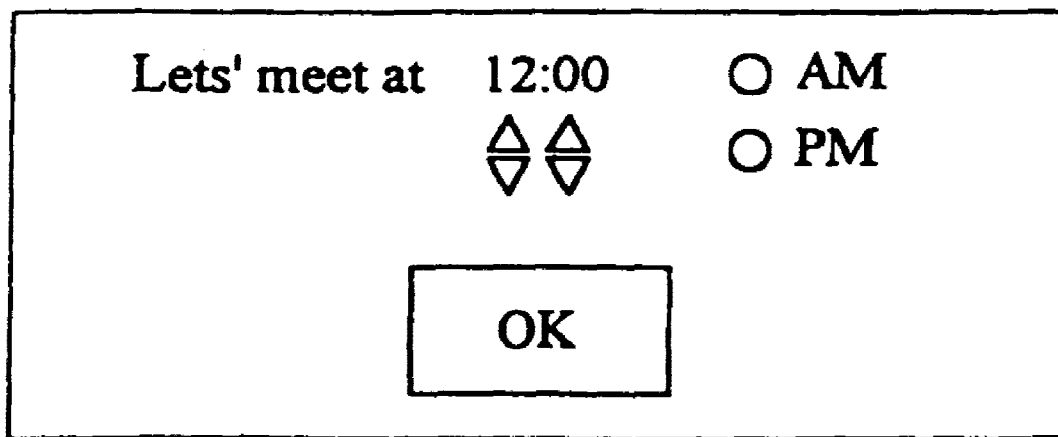


Figure 3



**Figure 4**

# Explore Litigation Insights

Docket Alarm provides insights to develop a more informed litigation strategy and the peace of mind of knowing you're on top of things.

## Real-Time Litigation Alerts



Keep your litigation team up-to-date with **real-time alerts** and advanced team management tools built for the enterprise, all while greatly reducing PACER spend.

Our comprehensive service means we can handle Federal, State, and Administrative courts across the country.

## Advanced Docket Research



With over 230 million records, Docket Alarm's cloud-native docket research platform finds what other services can't. Coverage includes Federal, State, plus PTAB, TTAB, ITC and NLRB decisions, all in one place.

Identify arguments that have been successful in the past with full text, pinpoint searching. Link to case law cited within any court document via Fastcase.

## Analytics At Your Fingertips



Learn what happened the last time a particular judge, opposing counsel or company faced cases similar to yours.

Advanced out-of-the-box PTAB and TTAB analytics are always at your fingertips.

## API

Docket Alarm offers a powerful API (application programming interface) to developers that want to integrate case filings into their apps.

## LAW FIRMS

Build custom dashboards for your attorneys and clients with live data direct from the court.

Automate many repetitive legal tasks like conflict checks, document management, and marketing.

## FINANCIAL INSTITUTIONS

Litigation and bankruptcy checks for companies and debtors.

## E-DISCOVERY AND LEGAL VENDORS

Sync your system to PACER to automate legal marketing.