

[54] **AUTO ZERO CIRCUIT FOR FLOW METER**

[75] **Inventors:** James W. Hargarten, Lafayette;  
Allan L. Samson, Berthoud, both of

[73] **Assignee:** Micro Motion, Inc., Boulder, Colo.

[21] **Appl. No.:** 903,337

[22] **Filed:** Sep. 3, 1986

[51] **Int. Cl.<sup>4</sup>** ..... G01F 1/84

[52] **U.S. Cl.** ..... 73/861.38; 307/525;  
324/83 D; 328/133

[58] **Field of Search** ..... 73/861.38, 861.29;  
307/234, 510, 511, 525; 328/109, 133, 135;  
324/830

[56] **References Cited**

**U.S. PATENT DOCUMENTS**

Re. 31,450	11/1983	Smith	73/861.38
3,021,481	2/1962	Kalmus et al.	324/83
3,039,024	6/1962	Spooner	317/149
3,087,532	4/1963	Roth	73/3
3,209,591	10/1965	Lester et al.	73/181
3,579,104	5/1971	Pignard et al.	324/83 D
3,644,835	2/1972	Thompson	328/133
3,824,481	7/1974	Sponholz et al.	328/162
3,906,384	9/1975	Schiffman	328/165
3,924,612	12/1975	Dempster et al.	128/2.08
3,937,944	2/1976	Radzyner et al.	235/184
3,982,434	9/1976	McMurtrie	73/194 VS
4,020,685	5/1977	Van Millingen et al.	73/136 A
4,054,835	10/1977	Los et al.	324/109
4,096,575	6/1978	Itoh	364/571
4,138,649	2/1979	Schaffer	330/9
4,150,433	4/1979	Kaniel	364/571

4,163,947	8/1979	Weedon	328/128
4,169,232	9/1979	Henrich	307/354
4,193,039	3/1980	Massa et al.	328/162
4,246,497	1/1981	Lawson et al.	307/232
4,331,920	5/1982	Kalisch et al.	324/225
4,367,654	1/1983	Ymker et al.	73/861.29
4,372,168	2/1983	Watson	73/861.28
4,483,202	11/1984	Ogura et al.	73/861.27
4,491,025	1/1985	Smith et al.	73/861.38
4,506,175	3/1985	Reitmeier et al.	307/525

**FOREIGN PATENT DOCUMENTS**

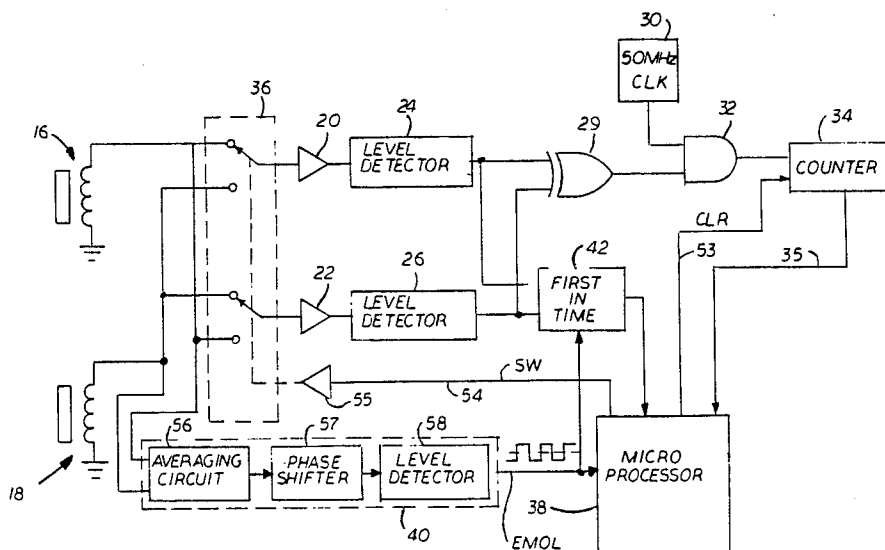
0083144	7/1983	European Pat. Off.	.
0148685	7/1985	European Pat. Off.	.
9143109	7/1980	German Democratic Rep.	.
58-151518	9/1983	Japan	.
58-156813	9/1983	Japan	.

*Primary Examiner*—Herbert Goldstein

[57] **ABSTRACT**

An electronic signal processor for substantially eliminating timing errors in determining the time difference between two periodic analog signals which uses switches that allow one of the two signals to be connected to one channel for digitizing that signal and the other signal to be connected to a second channel, then the switches, after about a cycle, reverse the connections. The measured time differences over two cycles are then added or subtracted to substantially eliminate timing errors caused by variations in the operational characteristics of electronic components in the signal processor.

**10 Claims, 5 Drawing Sheets**



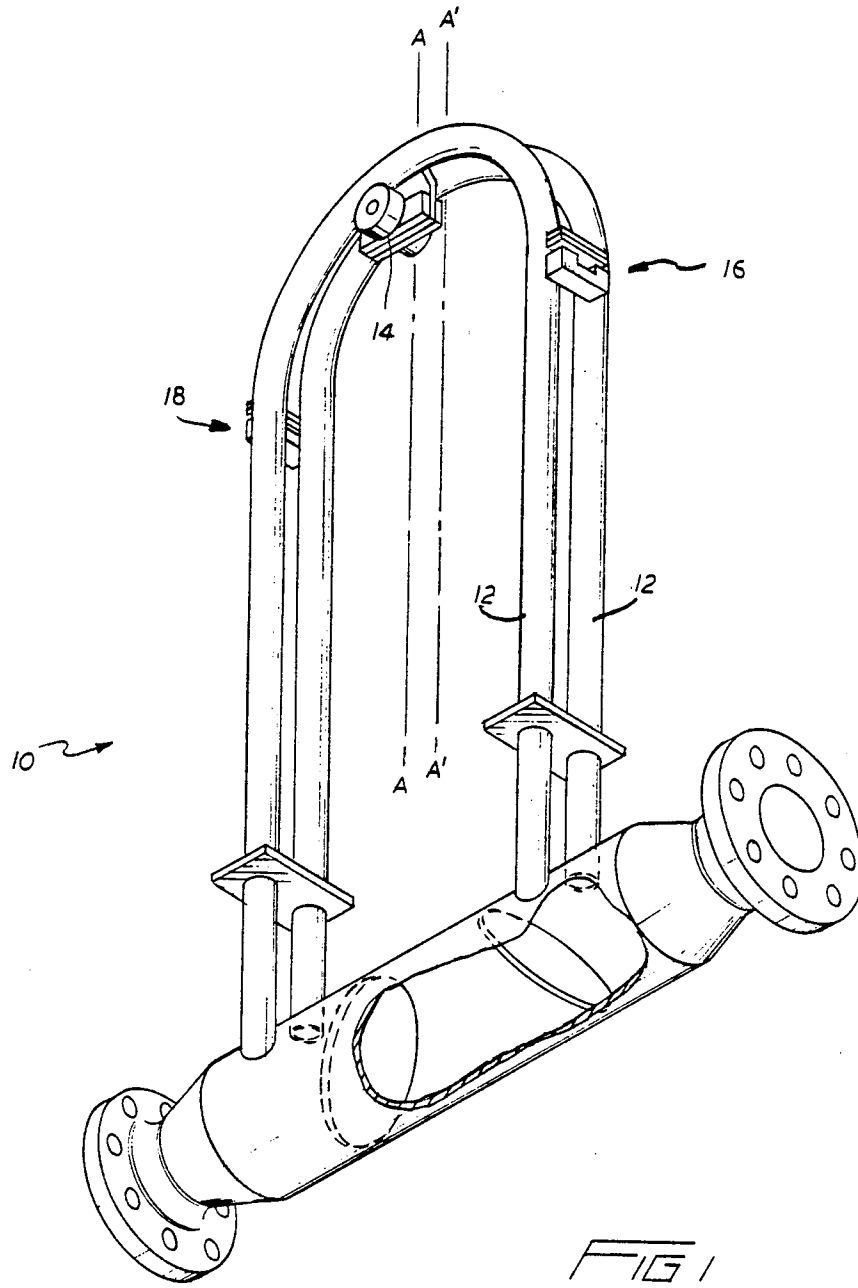
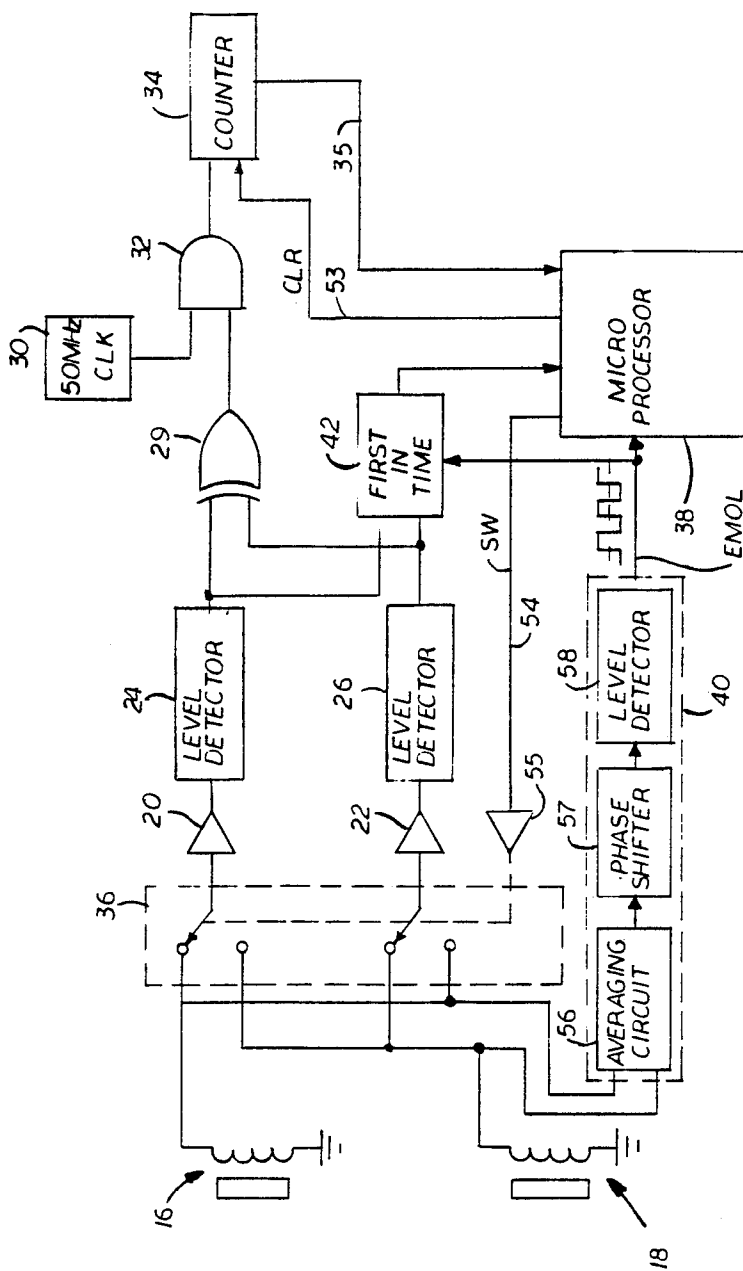


FIG 2



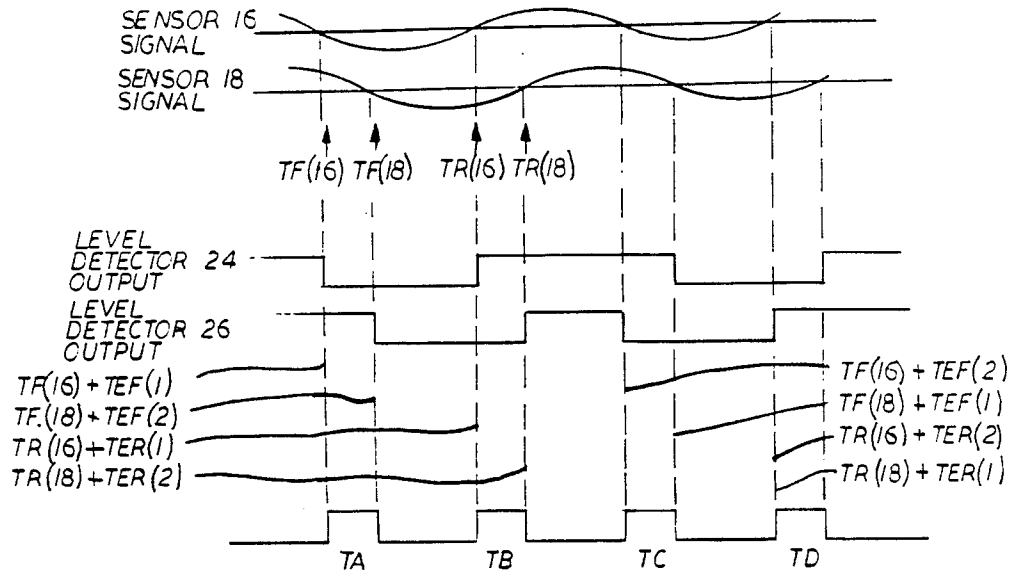
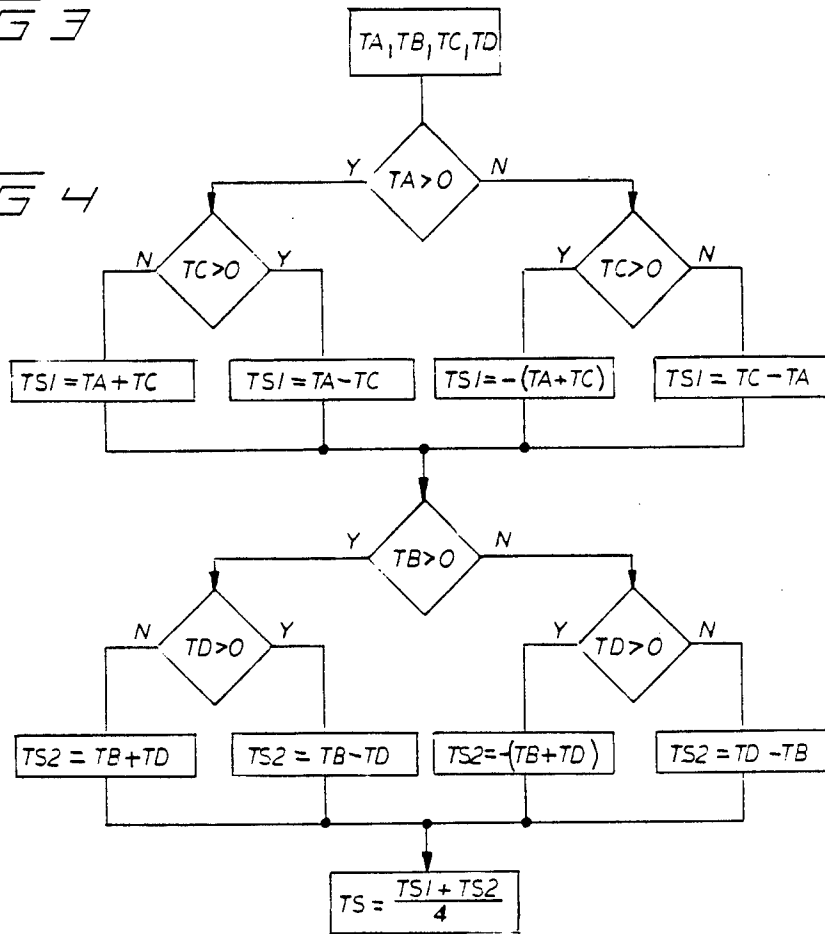


FIG 3

FIG 4



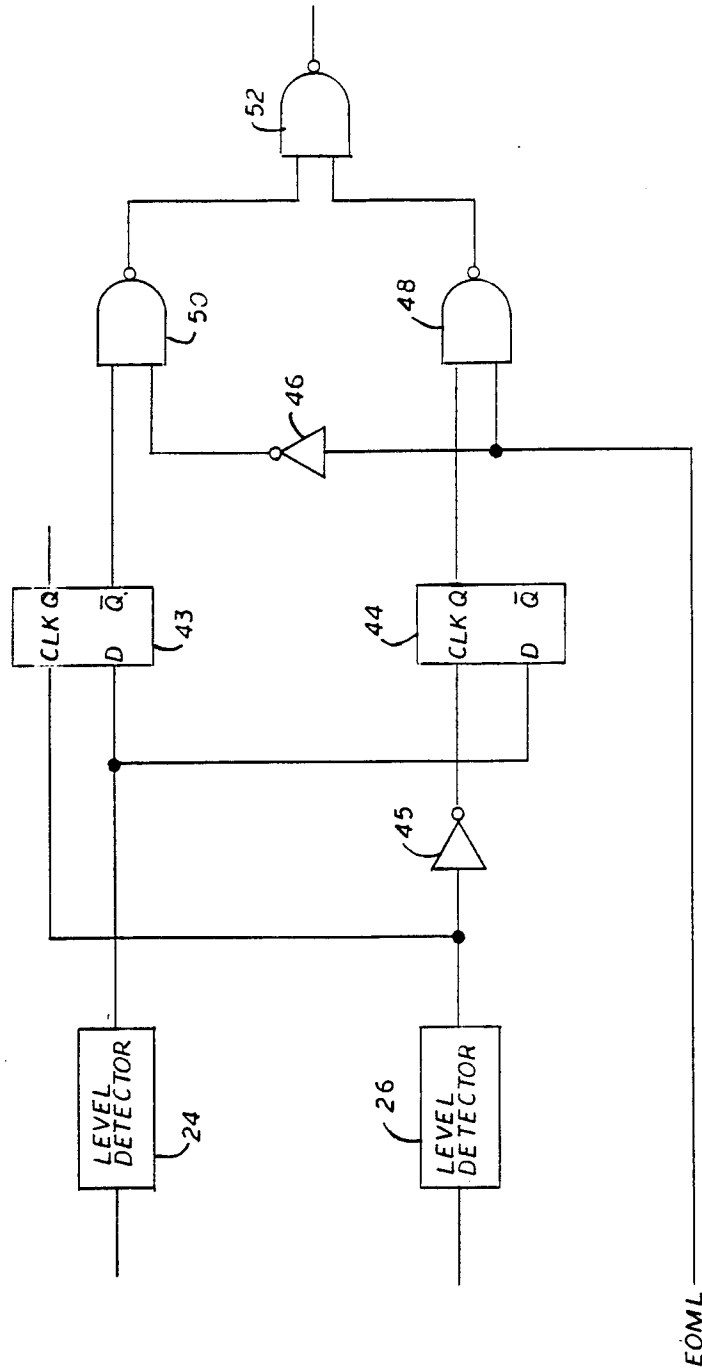


FIG 5

# Explore Litigation Insights

Docket Alarm provides insights to develop a more informed litigation strategy and the peace of mind of knowing you're on top of things.

## Real-Time Litigation Alerts



Keep your litigation team up-to-date with **real-time alerts** and advanced team management tools built for the enterprise, all while greatly reducing PACER spend.

Our comprehensive service means we can handle Federal, State, and Administrative courts across the country.

## Advanced Docket Research



With over 230 million records, Docket Alarm's cloud-native docket research platform finds what other services can't. Coverage includes Federal, State, plus PTAB, TTAB, ITC and NLRB decisions, all in one place.

Identify arguments that have been successful in the past with full text, pinpoint searching. Link to case law cited within any court document via Fastcase.

## Analytics At Your Fingertips



Learn what happened the last time a particular judge, opposing counsel or company faced cases similar to yours.

Advanced out-of-the-box PTAB and TTAB analytics are always at your fingertips.

## API

Docket Alarm offers a powerful API (application programming interface) to developers that want to integrate case filings into their apps.

## LAW FIRMS

Build custom dashboards for your attorneys and clients with live data direct from the court.

Automate many repetitive legal tasks like conflict checks, document management, and marketing.

## FINANCIAL INSTITUTIONS

Litigation and bankruptcy checks for companies and debtors.

## E-DISCOVERY AND LEGAL VENDORS

Sync your system to PACER to automate legal marketing.