



US005317928A

United States Patent [19]
Young

[11] Patent Number: 5,317,928
[45] Date of Patent: Jun. 7, 1994

[54] METHOD FOR MEASURING THE FLOW RATE OF A COMPONENT OF A TWO-COMPONENT FLUID MIXTURE

[75] Inventor: Alan M. Young, Los Gatos, Calif.

[73] Assignee: Exac Corporation, San Jose, Calif.

[21] Appl. No.: 6,800

[22] Filed: Jan. 21, 1993

[51] Int. Cl.⁵ G01F 1/74; G01N 9/00

[52] U.S. Cl. 73/32 R; 73/861.04; 364/577

[58] Field of Search 73/32 R, 61.43, 61.44, 73/861.04, 861.38; 364/510, 558, 577

[56] References Cited

U.S. PATENT DOCUMENTS

4,010,645 3/1977 Herzl 73/32 R X
4,689,989 9/1987 Aslesen et al. 73/861.04 X

Primary Examiner—Herbert Goldstein

Attorney, Agent, or Firm—Claude A. S. Hamrick

[57] ABSTRACT

A method for determining the relationship between the density of a multi-component fluid mixture comprising a number of known components and the concentration of one of the components of the fluid mixture. The method comprises the steps of:

- (i) determining a first and a second density-concentration relationship to define the relationship between the density of the fluid mixture and the concentration of the component at first and second known temperatures T₁ and T₂, respectively;
- (ii) measuring the temperature T of the mixture;

- (iii) determining a temperature ratio value according to the relationship

$$\frac{T - T_2}{T_1 - T_2}$$

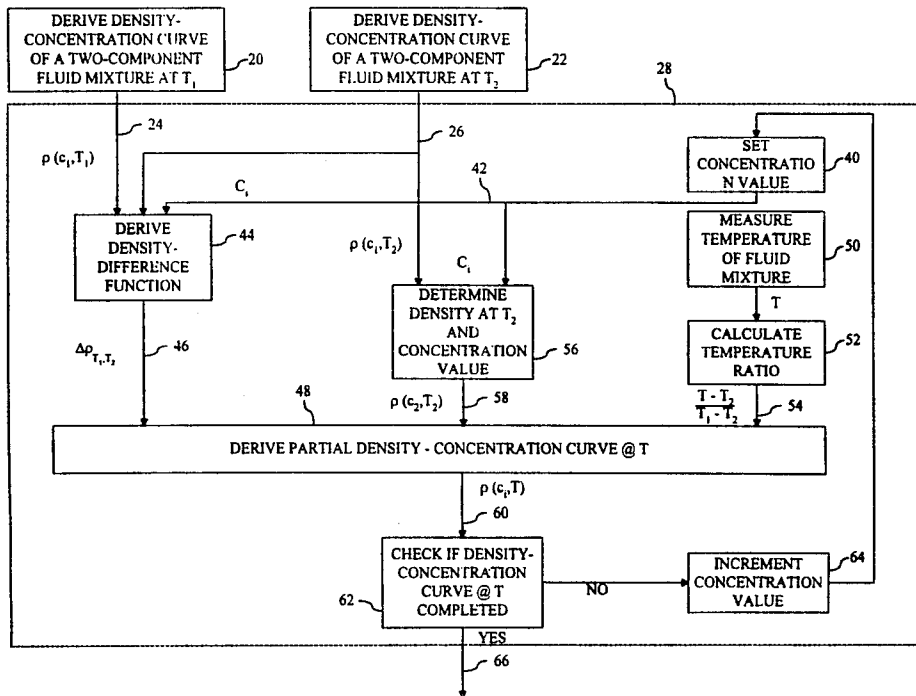
- (iv) choosing a component concentration value C_i;
- (v) determining first and second density values ρ(C_i, T₁) and ρ(C_i, T₂) by inputting the component concentration value C_i into said first and second density-concentration relationships to yield the first and second density values respectively;
- (vi) subtracting the second density value from the first density value to produce a density difference value Δρ_{T₁,T₂};
- (vii) processing the results from steps (iii), (v) and (vi) according to the equation

$$\rho(C_i, T) = \rho(C_i, T_2) + \left[\frac{T - T_2}{T_1 - T_2} \right] \cdot \Delta\rho_{T_1, T_2}$$

to produce a density-concentration value ρ(C_i, T) for said fluid mixture;

- (viii) incrementing the component concentration to provide a new component concentration value C_i;
- (ix) repeating steps (v) and (viii) until sufficient density-concentration values have been produced to define the relationship between the density of a multi-component fluid mixture comprising a number of known components and the concentration of one of the components of said fluid mixture.

6 Claims, 5 Drawing Sheets



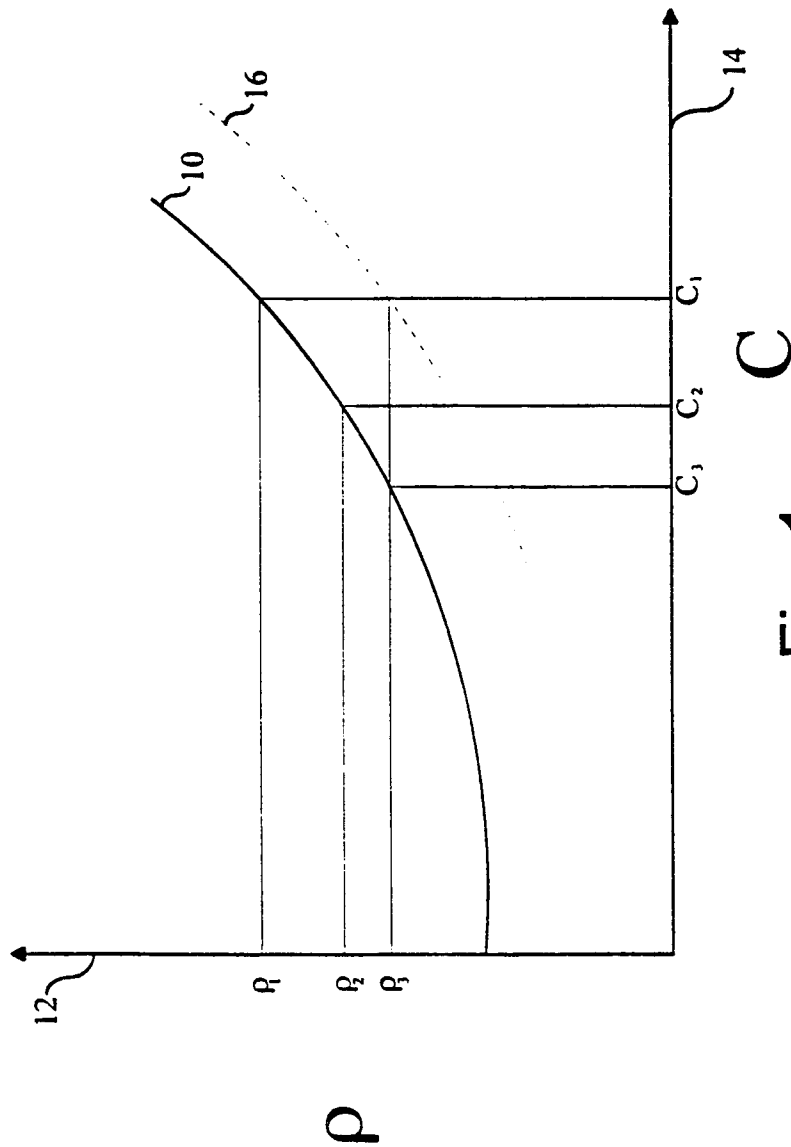
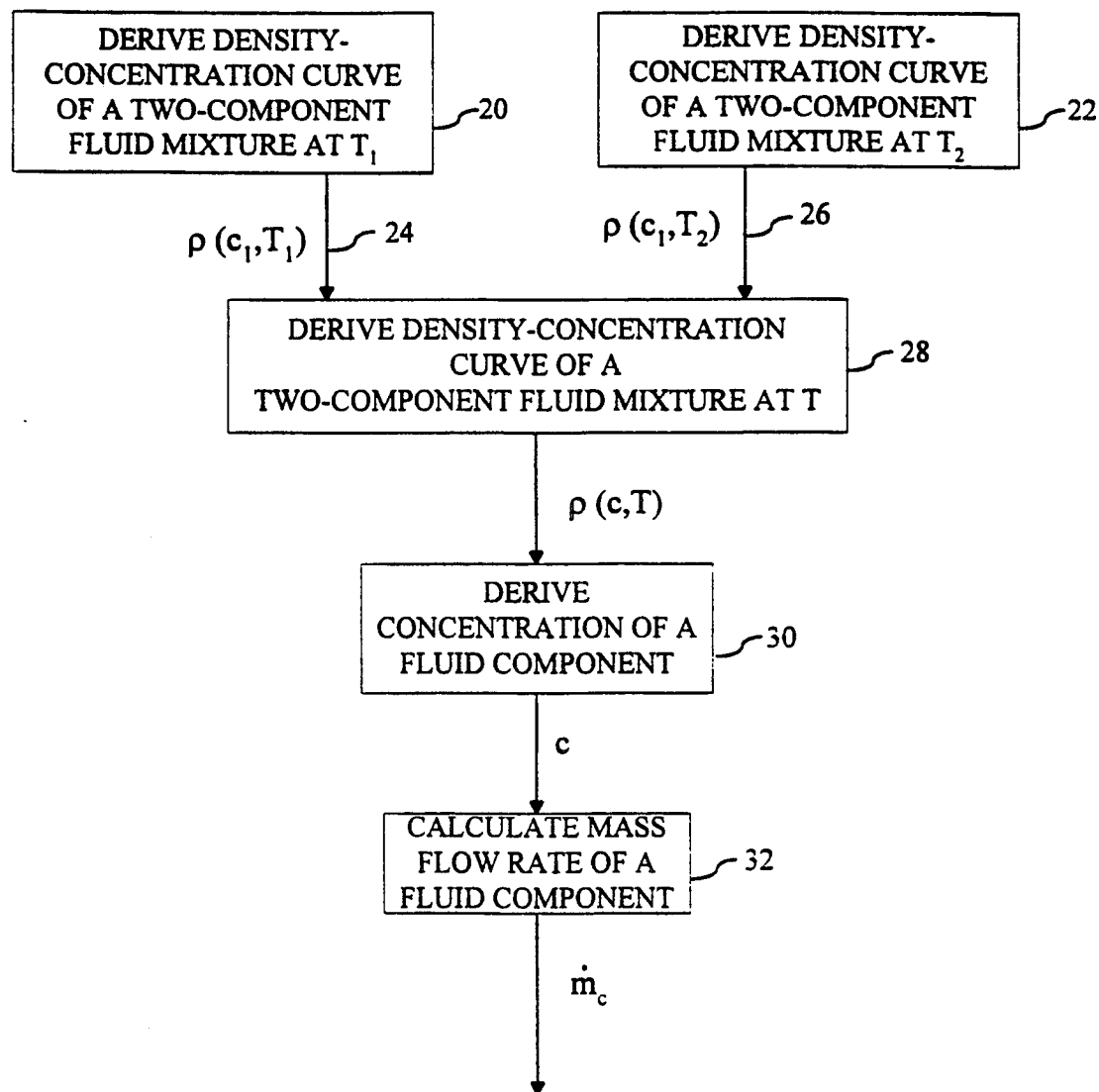


Fig. 1
(Prior Art)

Fig. 2

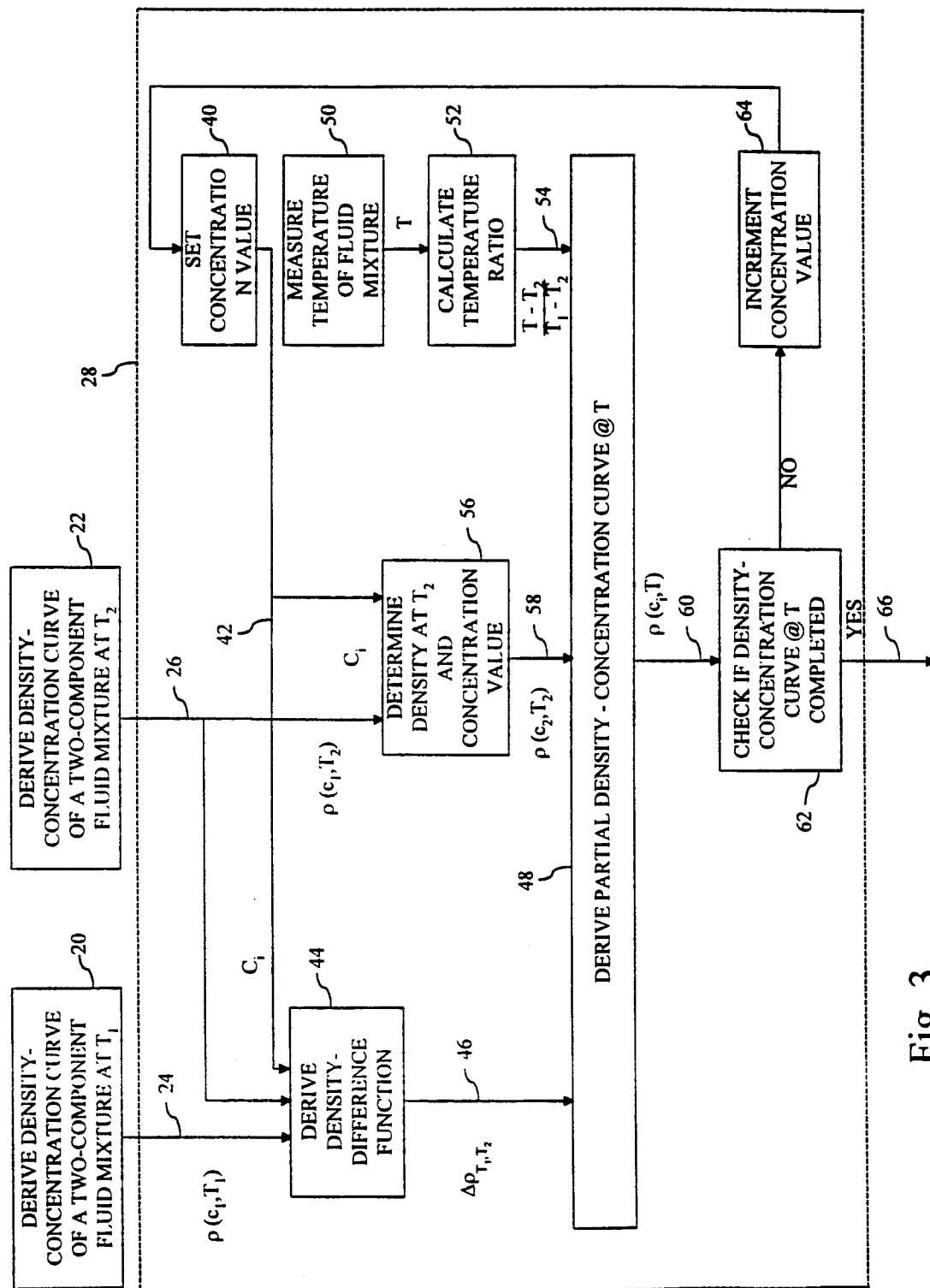


Fig. 3

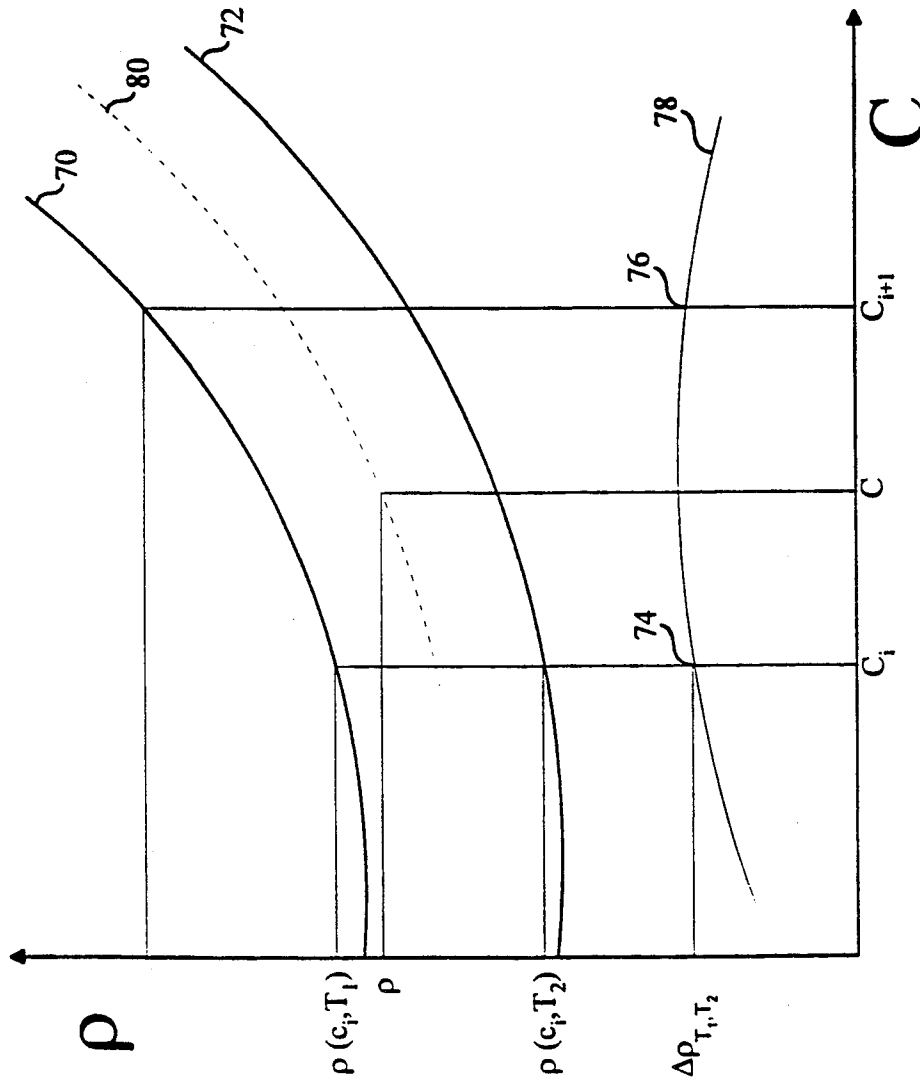


Fig. 4

Explore Litigation Insights

Docket Alarm provides insights to develop a more informed litigation strategy and the peace of mind of knowing you're on top of things.

Real-Time Litigation Alerts



Keep your litigation team up-to-date with **real-time alerts** and advanced team management tools built for the enterprise, all while greatly reducing PACER spend.

Our comprehensive service means we can handle Federal, State, and Administrative courts across the country.

Advanced Docket Research



With over 230 million records, Docket Alarm's cloud-native docket research platform finds what other services can't. Coverage includes Federal, State, plus PTAB, TTAB, ITC and NLRB decisions, all in one place.

Identify arguments that have been successful in the past with full text, pinpoint searching. Link to case law cited within any court document via Fastcase.

Analytics At Your Fingertips



Learn what happened the last time a particular judge, opposing counsel or company faced cases similar to yours.

Advanced out-of-the-box PTAB and TTAB analytics are always at your fingertips.

API

Docket Alarm offers a powerful API (application programming interface) to developers that want to integrate case filings into their apps.

LAW FIRMS

Build custom dashboards for your attorneys and clients with live data direct from the court.

Automate many repetitive legal tasks like conflict checks, document management, and marketing.

FINANCIAL INSTITUTIONS

Litigation and bankruptcy checks for companies and debtors.

E-DISCOVERY AND LEGAL VENDORS

Sync your system to PACER to automate legal marketing.