

EXHIBIT 2001



(12) **United States Patent**
Sartore et al.

(10) **Patent No.:** **US 6,249,825 B1**
(45) **Date of Patent:** ***Jun. 19, 2001**

(54) **UNIVERSAL SERIAL BUS INTERFACE SYSTEM AND METHOD**
(75) Inventors: **Ronald H. Sartore**, San Diego; **Steven P. Larky**, Del Mar, both of CA (US)
(73) Assignee: **Cypress Semiconductor**, San Jose, CA (US)

(*) Notice: Subject to any disclaimer, the term of this patent is extended or adjusted under 35 U.S.C. 154(b) by 0 days.

This patent is subject to a terminal disclaimer.

(21) Appl. No.: **09/476,923**
(22) Filed: **Jan. 4, 2000**

Related U.S. Application Data

(63) Continuation of application No. 08/886,923, filed on Jul. 2, 1997, now Pat. No. 6,012,103.
(51) **Int. Cl.**⁷ **G06F 13/368**
(52) **U.S. Cl.** **710/8; 710/9; 710/10**
(58) **Field of Search** **713/1, 100; 710/8, 710/7, 9, 10; 320/21; 709/220, 221, 250; 711/103-105**

(56) **References Cited**

U.S. PATENT DOCUMENTS

4,641,261	2/1987	Dwyer et al.	364/900
4,862,355	8/1989	Newman et al.	364/200
5,289,580	2/1994	Latif et al.	395/275
5,428,748	6/1995	Davidson et al.	395/275
5,488,657	1/1996	Lynn et al.	379/395
5,497,067	* 3/1996	Shaw	320/21

5,574,859	11/1996	Yeh	395/200.1
5,577,213	11/1996	Avery et al.	395/280
5,586,268	12/1996	Chen et al.	395/250
5,598,409	* 1/1997	Madonna et al.	370/364
5,606,672	2/1997	Wade	395/308
5,615,344	3/1997	Corder	395/309
5,634,074	5/1997	Devon et al.	395/828
5,655,148	* 8/1997	Richman et al.	370/94
5,671,355	9/1997	Collins	709/250
5,673,031	* 9/1997	Meier	340/825.08
5,687,346	11/1997	Shinohara	711/130
5,701,429	12/1997	Legvold et al.	711/114
5,794,033	8/1998	Aldebert et al.	713/100
5,802,558	9/1998	Pierce	711/115
5,838,907	11/1998	Hansen	709/220
5,898,861	* 4/1999	Emerson et al.	710/7
5,982,879	* 11/1999	Lucey	379/389
6,012,103	* 1/2000	Sartore et al.	710/8
6,038,667	* 3/2000	Helbig, Sr.	713/200
6,049,870	* 4/2000	Greaves	713/1

* cited by examiner

Primary Examiner—Thomas Lee

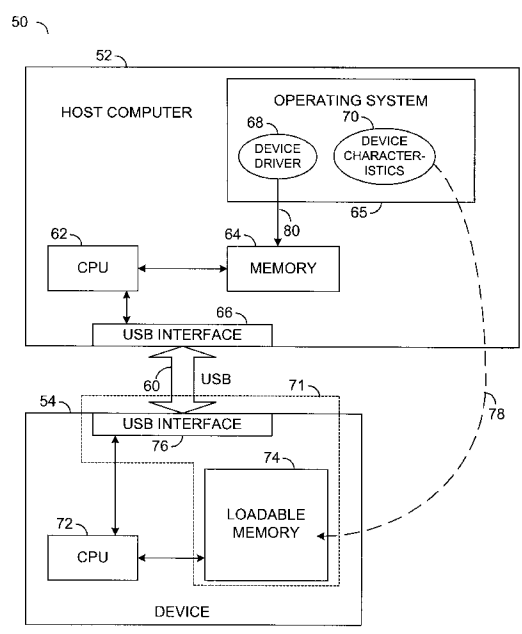
Assistant Examiner—Thuan Du

(74) *Attorney, Agent, or Firm*—Christopher P. Maiorana, P.C.

(57) **ABSTRACT**

A system for reconfiguring a peripheral device having a first configuration connected by a computer bus and a port to a host computer. The system comprises a first circuit and a second circuit. The first circuit may be configured to download information for a second configuration from the host computer into the peripheral device over the computer bus. The second circuit may be configured to electronically simulate, over the computer bus, a physical disconnection and reconnection of the peripheral device to reconfigure the peripheral device to the second configuration.

20 Claims, 7 Drawing Sheets



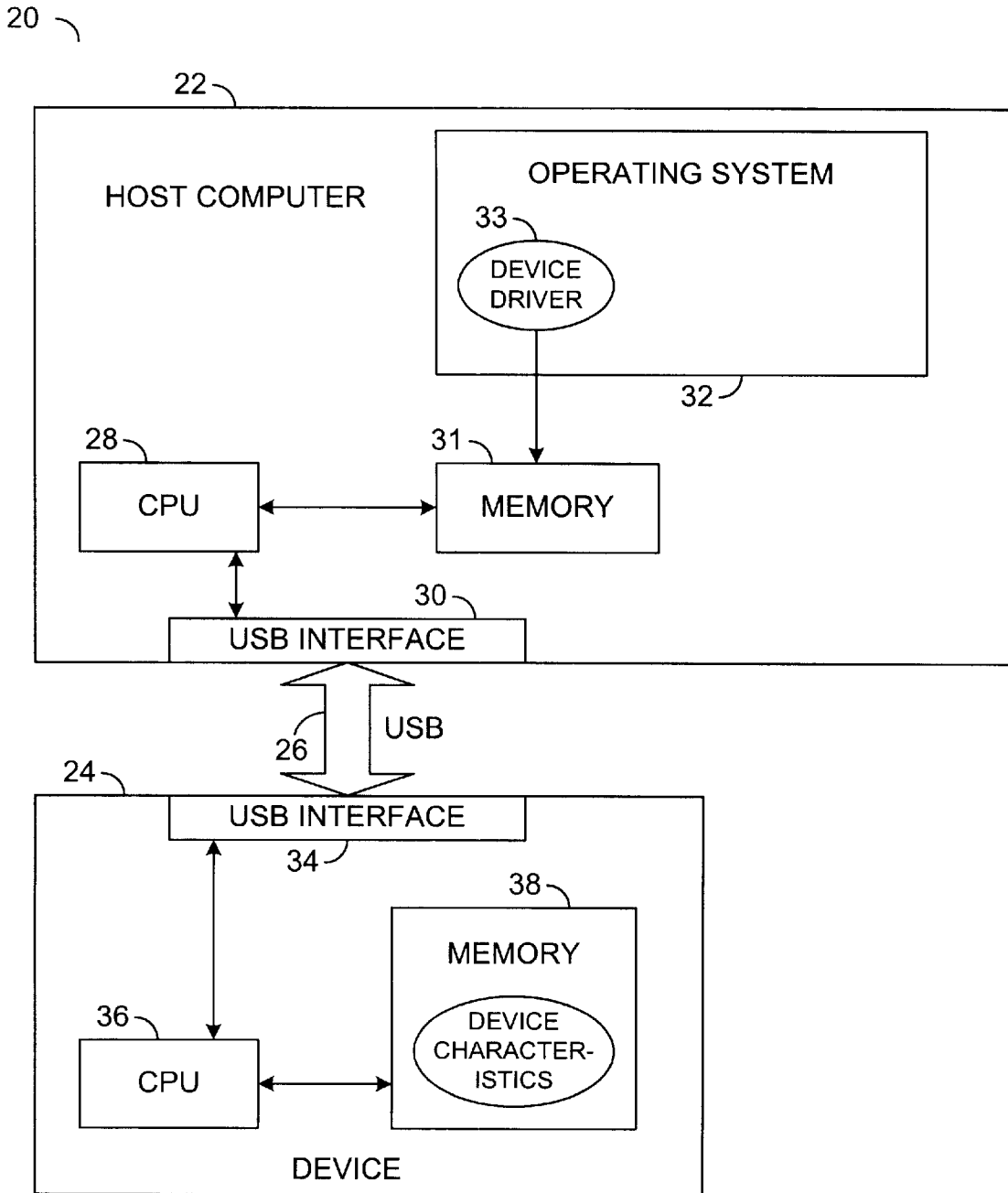


FIG. 1
(PRIOR ART)

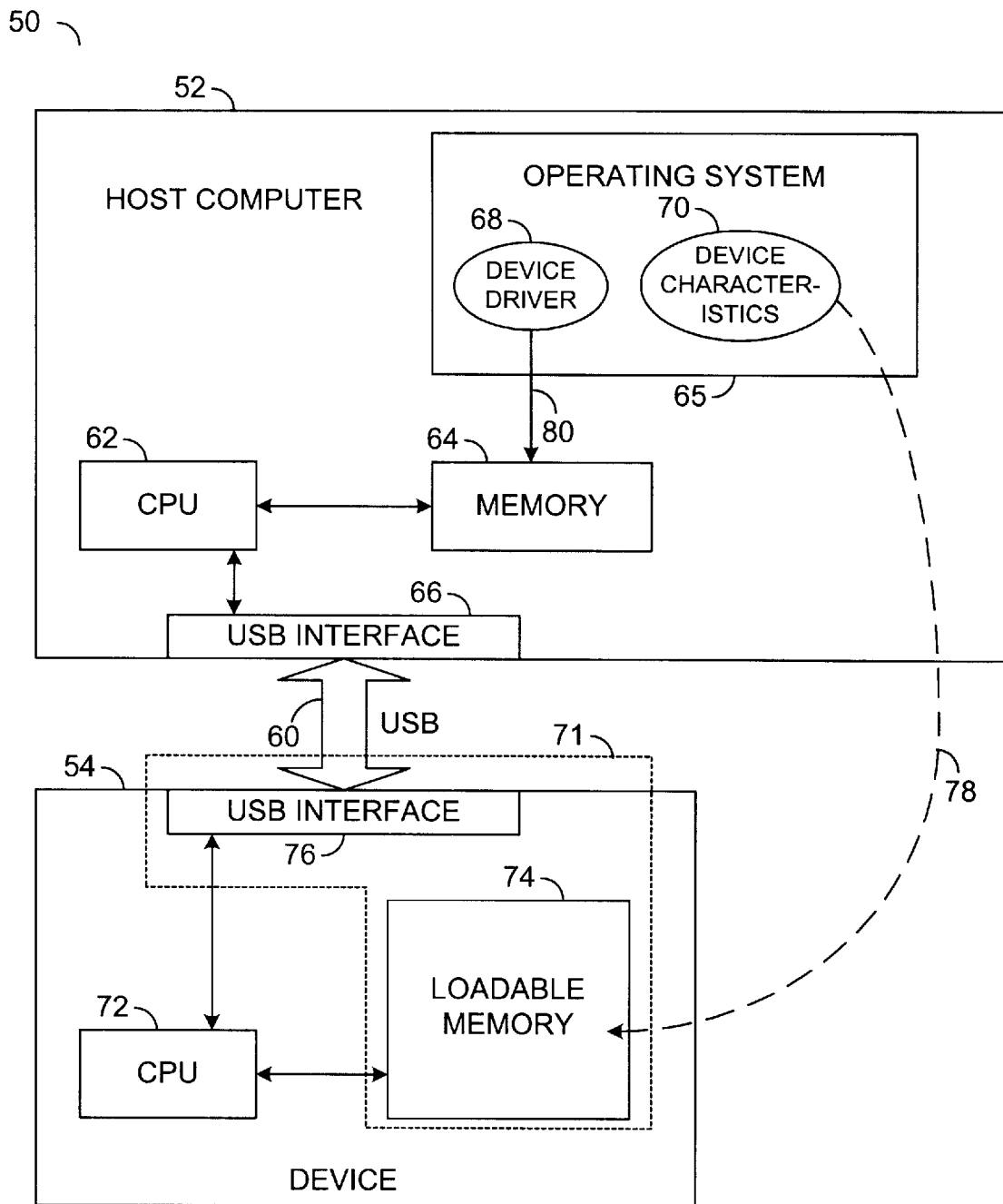


FIG. 2

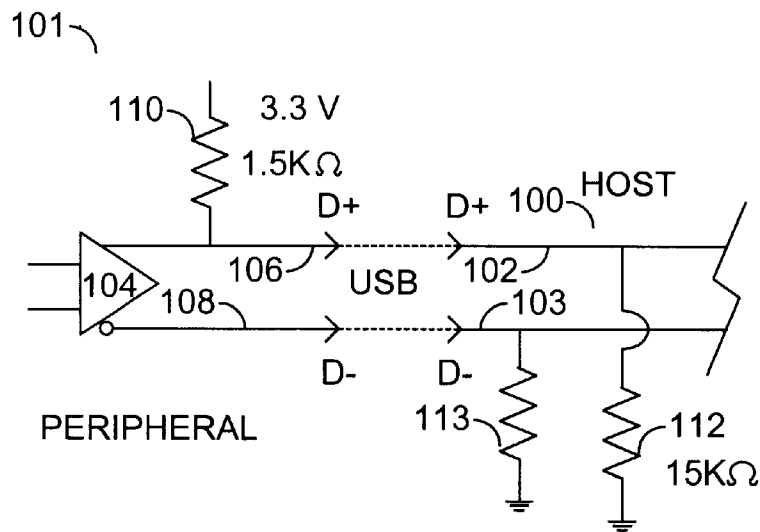


FIG. 3
(PRIOR ART)

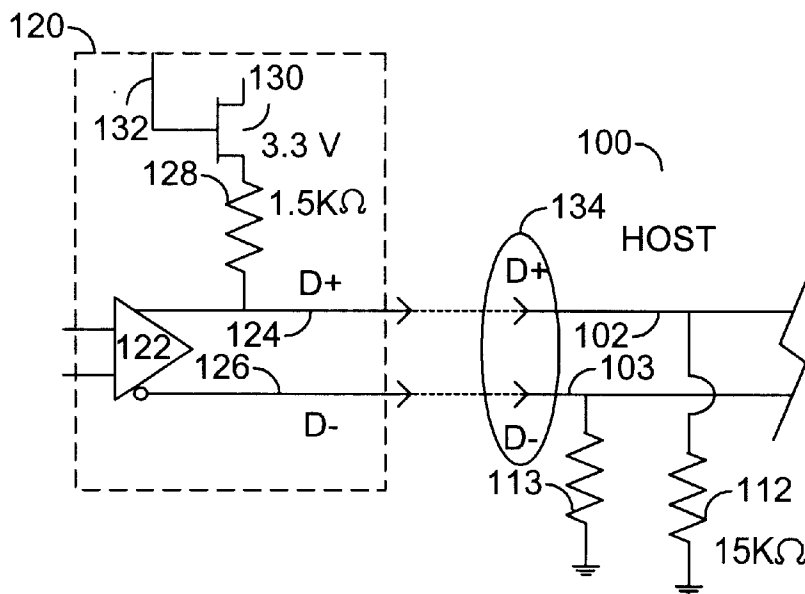


FIG. 4

Explore Litigation Insights

Docket Alarm provides insights to develop a more informed litigation strategy and the peace of mind of knowing you're on top of things.

Real-Time Litigation Alerts



Keep your litigation team up-to-date with **real-time alerts** and advanced team management tools built for the enterprise, all while greatly reducing PACER spend.

Our comprehensive service means we can handle Federal, State, and Administrative courts across the country.

Advanced Docket Research



With over 230 million records, Docket Alarm's cloud-native docket research platform finds what other services can't. Coverage includes Federal, State, plus PTAB, TTAB, ITC and NLRB decisions, all in one place.

Identify arguments that have been successful in the past with full text, pinpoint searching. Link to case law cited within any court document via Fastcase.

Analytics At Your Fingertips



Learn what happened the last time a particular judge, opposing counsel or company faced cases similar to yours.

Advanced out-of-the-box PTAB and TTAB analytics are always at your fingertips.

API

Docket Alarm offers a powerful API (application programming interface) to developers that want to integrate case filings into their apps.

LAW FIRMS

Build custom dashboards for your attorneys and clients with live data direct from the court.

Automate many repetitive legal tasks like conflict checks, document management, and marketing.

FINANCIAL INSTITUTIONS

Litigation and bankruptcy checks for companies and debtors.

E-DISCOVERY AND LEGAL VENDORS

Sync your system to PACER to automate legal marketing.