



US006012103A

United States Patent [19]

[11] Patent Number: **6,012,103**

Sartore et al.

[45] Date of Patent: **Jan. 4, 2000**

- [54] **BUS INTERFACE SYSTEM AND METHOD**
- [75] Inventors: **Ronald H. Sartore**, San Diego; **Steven P. Larky**, Del Mar, both of Calif.
- [73] Assignee: **Cypress Semiconductor Corp.**, San Jose, Calif.
- [21] Appl. No.: **08/886,923**
- [22] Filed: **Jul. 2, 1997**
- [51] Int. Cl.⁷ **G06F 13/368**
- [52] U.S. Cl. **710/8; 710/9; 710/10**
- [58] Field of Search **379/395; 709/220, 709/250; 711/114, 115, 130; 713/100; 710/9**

5,606,672	2/1997	Wade .	
5,615,344	3/1997	Corder .	
5,634,074	5/1997	Devon et al.	395/828
5,671,355	9/1997	Collins	709/250
5,687,346	11/1997	Shinohara	711/130
5,701,429	12/1997	Legvold et al.	711/114
5,794,033	8/1998	Aldebert et al.	713/100
5,802,558	9/1998	Pierce	711/115
5,838,907	11/1998	Hansen	709/220

Primary Examiner—Thomas C. Lee
Assistant Examiner—Chien Yuan
Attorney, Agent, or Firm—Christopher P. Maiorana, P.C.

[57] ABSTRACT

A system and method for reconfiguring a peripheral device connected by a computer bus and port to a host from a first generic configuration to a second manufacturer specific configuration is provided in which the configuration of a peripheral device may be electronically reset. A peripheral interface device for a standardized computer peripheral device bus and port is also provided in which a physical disconnection and reconnection of the peripheral device is emulated to reconfigure the bus and port for a particular peripheral device.

[56] References Cited

U.S. PATENT DOCUMENTS

4,641,261	2/1987	Dwyer et al. .	
4,862,355	8/1989	Newman et al. .	
5,289,580	2/1994	Latif et al. .	
5,428,748	6/1995	Davidson et al.	710/9
5,488,657	1/1996	Lynn et al.	379/395
5,574,859	11/1996	Yeh .	
5,577,213	11/1996	Avery et al. .	
5,586,268	12/1996	Chen et al. .	

33 Claims, 7 Drawing Sheets

50

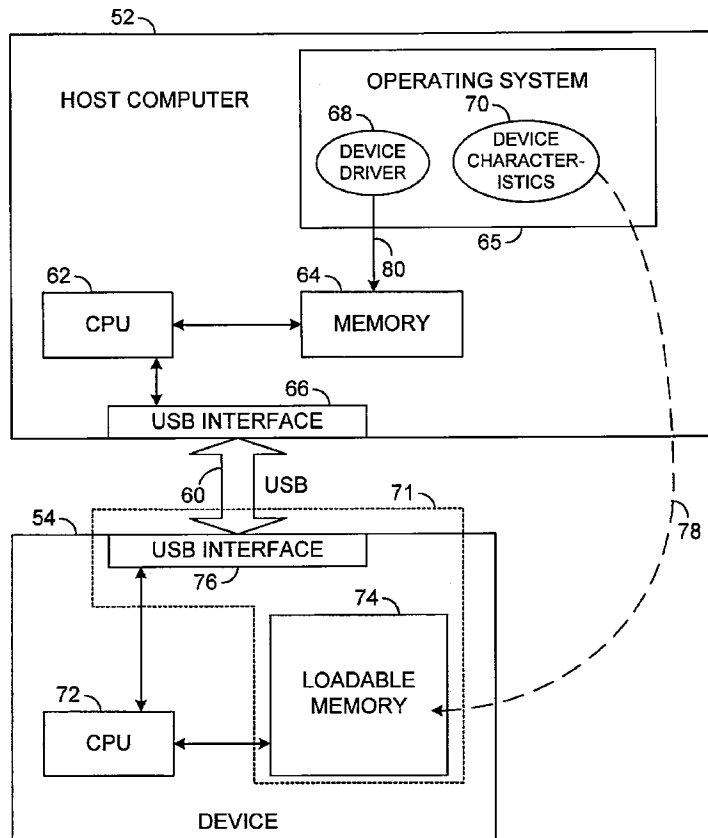


EXHIBIT 1001

20

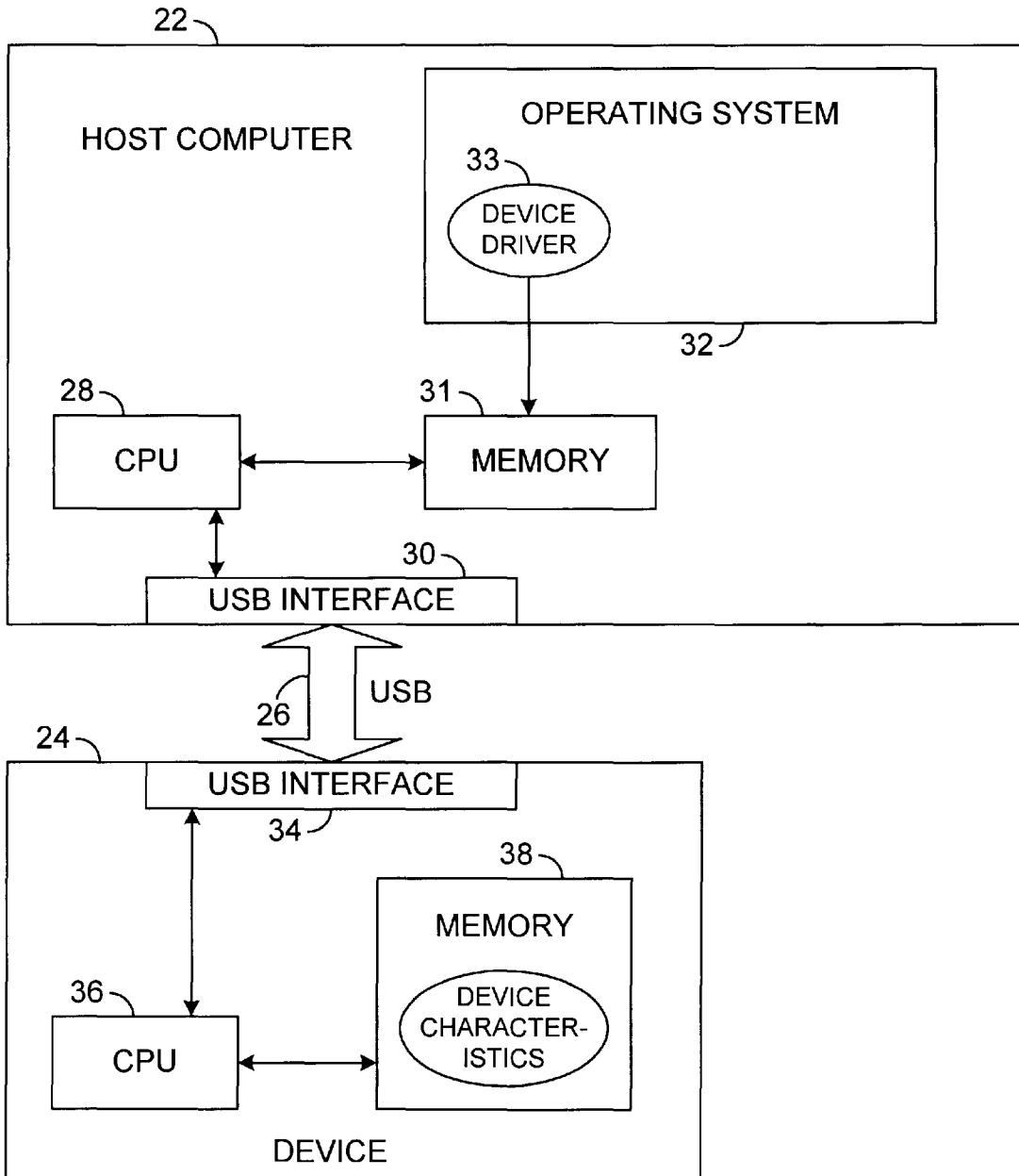


FIG. 1
(PRIOR ART)

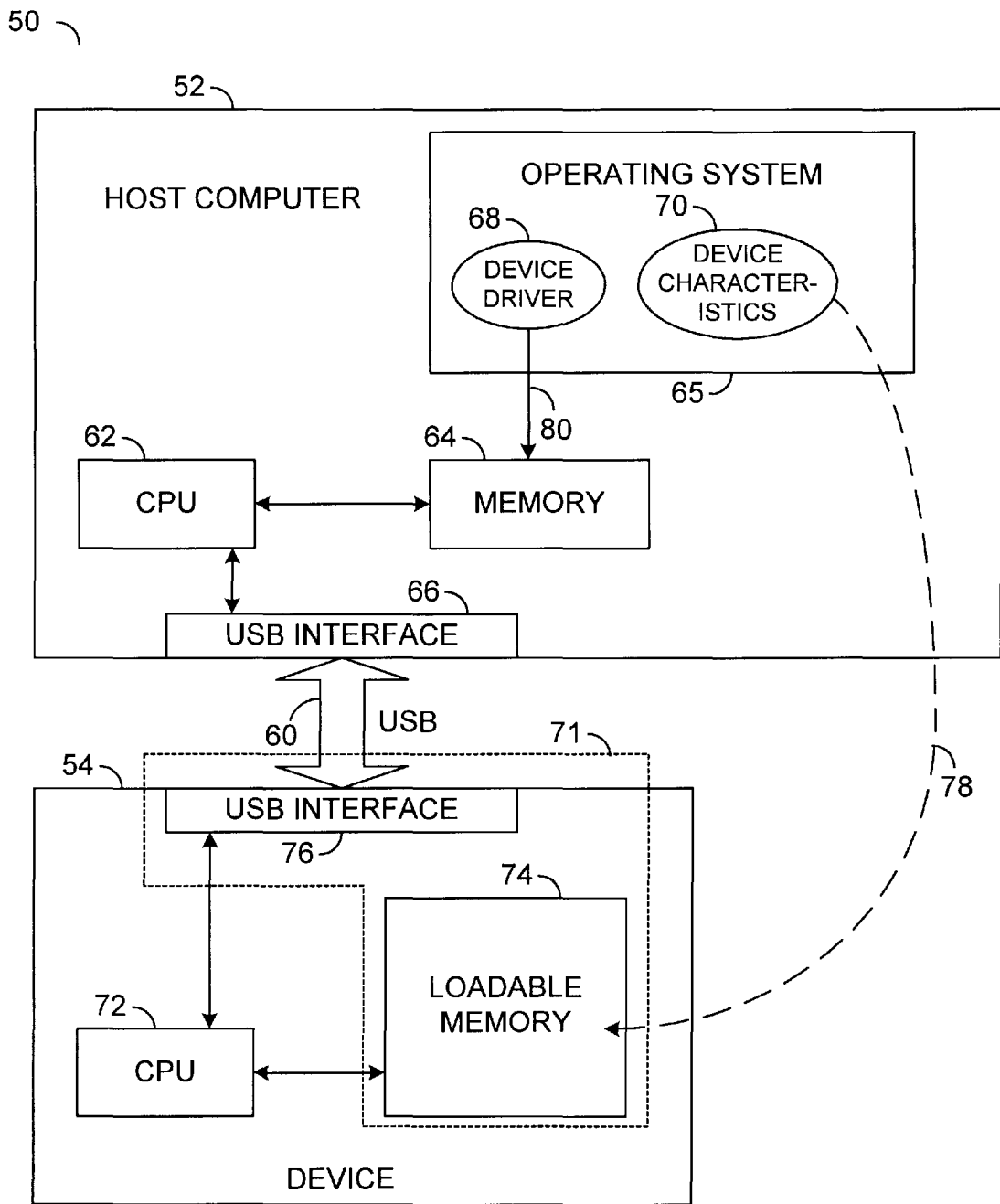


FIG. 2

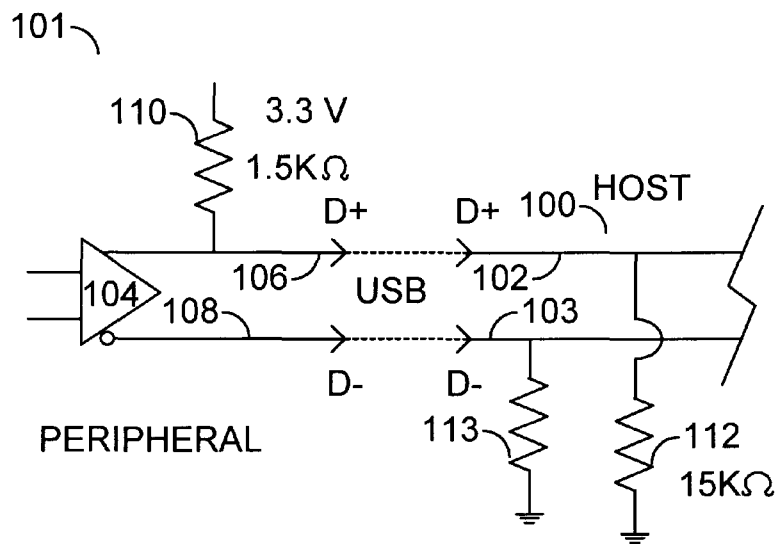


FIG. 3

(PRIOR ART)

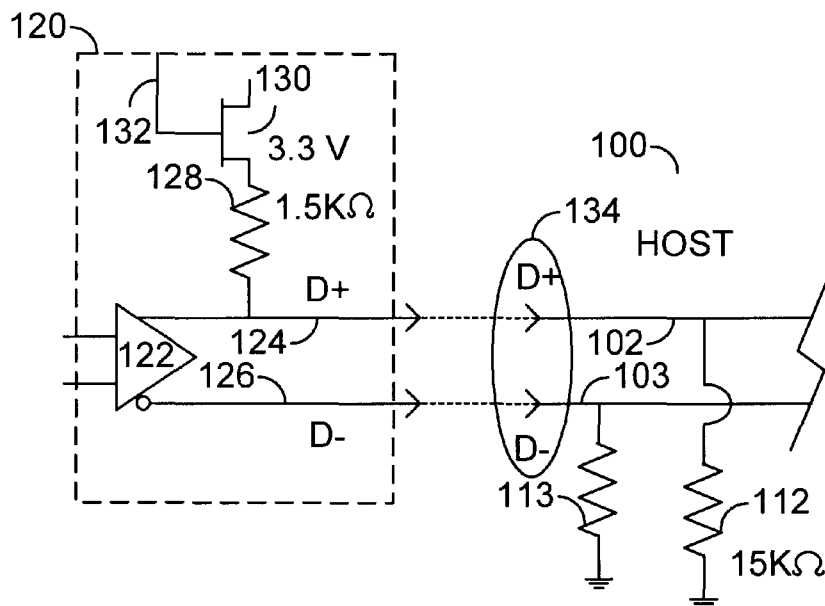


FIG. 4

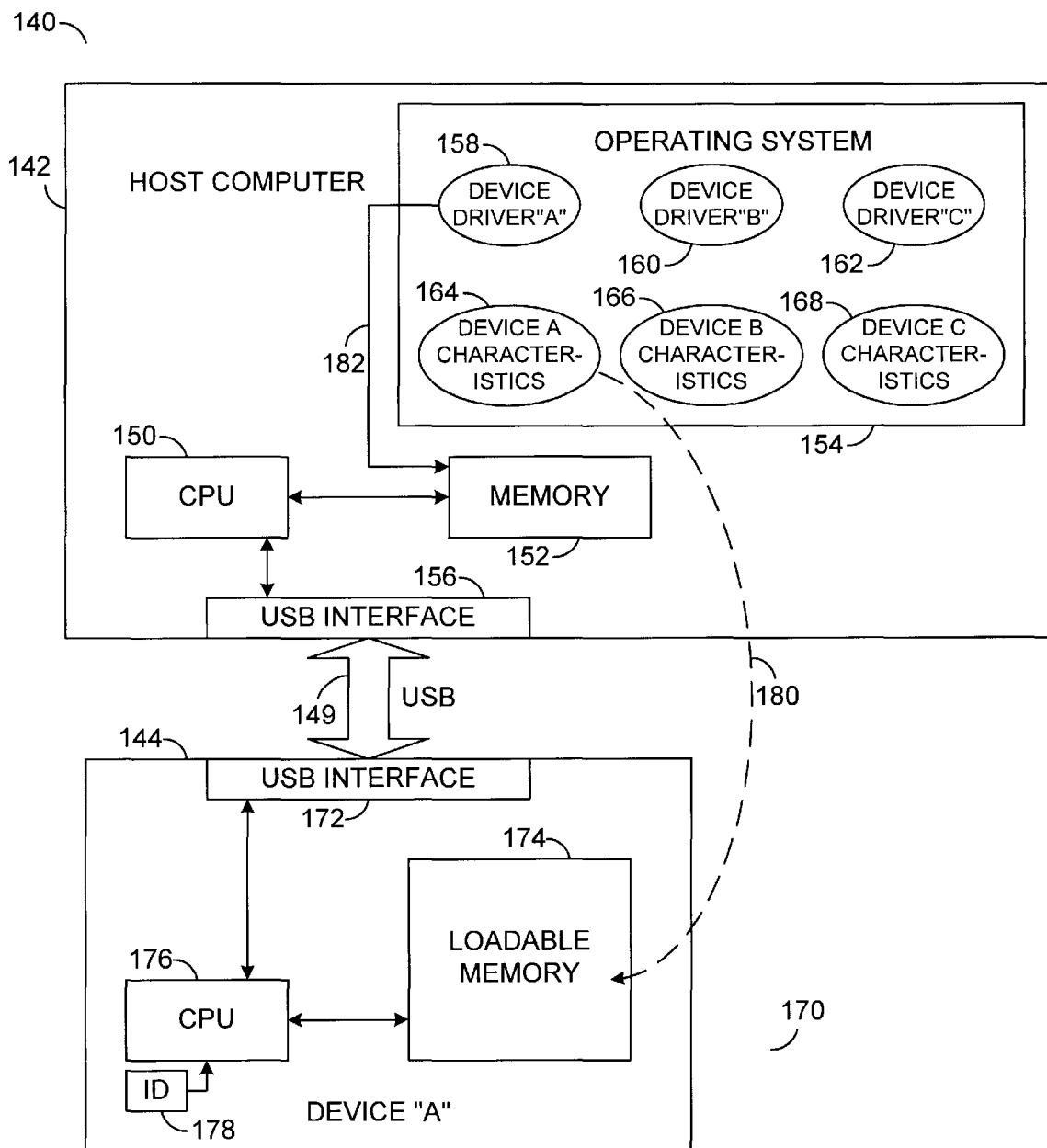


FIG. 5

Explore Litigation Insights

Docket Alarm provides insights to develop a more informed litigation strategy and the peace of mind of knowing you're on top of things.

Real-Time Litigation Alerts



Keep your litigation team up-to-date with **real-time alerts** and advanced team management tools built for the enterprise, all while greatly reducing PACER spend.

Our comprehensive service means we can handle Federal, State, and Administrative courts across the country.

Advanced Docket Research



With over 230 million records, Docket Alarm's cloud-native docket research platform finds what other services can't. Coverage includes Federal, State, plus PTAB, TTAB, ITC and NLRB decisions, all in one place.

Identify arguments that have been successful in the past with full text, pinpoint searching. Link to case law cited within any court document via Fastcase.

Analytics At Your Fingertips



Learn what happened the last time a particular judge, opposing counsel or company faced cases similar to yours.

Advanced out-of-the-box PTAB and TTAB analytics are always at your fingertips.

API

Docket Alarm offers a powerful API (application programming interface) to developers that want to integrate case filings into their apps.

LAW FIRMS

Build custom dashboards for your attorneys and clients with live data direct from the court.

Automate many repetitive legal tasks like conflict checks, document management, and marketing.

FINANCIAL INSTITUTIONS

Litigation and bankruptcy checks for companies and debtors.

E-DISCOVERY AND LEGAL VENDORS

Sync your system to PACER to automate legal marketing.