

United States Patent [19]

Shimada et al.

[11] Patent Number: **4,866,542**

[45] Date of Patent: **Sep. 12, 1989**

[54] **REMOTE-CONTROLLING COMMANDER WITH MULTI-FUNCTION ROTARY DIAL**

[75] Inventors: **Keiichiro Shimada, Kanagawa; Tatsuya Wakahara, Tokyo; Noboru Shibuya, Kanagawa, all of Japan**

[73] Assignee: **Sony Corporation, Tokyo, Japan**

[21] Appl. No.: **942,978**

[22] Filed: **Dec. 17, 1986**

[30] **Foreign Application Priority Data**

Dec. 27, 1985 [JP] Japan 60-295292

[51] Int. Cl.⁴ **H04N 5/783**

[52] U.S. Cl. **360/10.3; 360/33.1; 360/71; 360/73.08; 358/335**

[58] Field of Search 369/7, 6; 358/335, 191.1, 358/194.1; 360/33.1, 10.1, 14.1, 61, 10.3, 71, 73, 73.01, 73.04, 73.05, 73.08; 455/181, 186, 185, 179, 603; 361/340; 200/33 R, 61, 58 R; 340/696, 688, 870.08

[56] **References Cited**

U.S. PATENT DOCUMENTS

3,987,414	10/1976	Tuma	358/194.1
4,045,777	8/1977	Mierzwinski et al.	340/168
4,081,754	3/1978	Jackson	325/396
4,206,483	6/1980	Nakamura	360/33
4,270,117	5/1981	Ziegelbein et al.	340/168
4,325,081	4/1981	Abe et al.	358/127
4,352,010	9/1982	Koogler	235/92
4,404,531	9/1983	Genrich	331/64
4,428,005	1/1984	Kubo	360/10.3
4,527,204	7/1985	Kozakai et al.	360/33.1
4,538,188	8/1985	Barker et al.	360/14.3
4,539,603	9/1985	Takéuchi et al.	360/10.1

4,539,711	9/1985	Harger	455/166
4,712,105	12/1987	Kohler	358/194.1
4,718,112	1/1988	Shinoda	358/194.1
4,786,982	11/1988	Wakahara et al.	360/10.3

FOREIGN PATENT DOCUMENTS

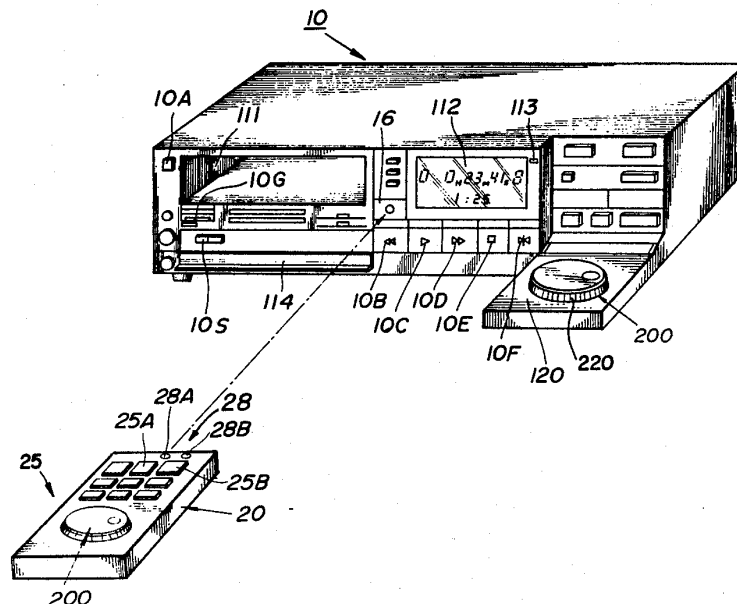
0002434	9/1978	European Pat. Off.	.
0188162	7/1986	European Pat. Off.	.
2491707	9/1982	France	.
WO81/03713	12/1981	PCT Int'l Appl.	.
2006559	5/1979	United Kingdom	.

Primary Examiner—Alan Faber
Assistant Examiner—W. R. Young
Attorney, Agent, or Firm—Ronald P. Kananen

[57] **ABSTRACT**

A remote-controlling commander includes a rotary dial rotatably mounted on a commander housing for manual operation of the user. The commander also includes a position detector for monitoring angular position of the rotary dial, in which the angular position and/or angular displacement of the rotary dial represents which operation of the apparatus is to be controlled and an encoder for producing an encoded signal variable depending upon the angular position and/or angular displacement of the rotary dial. The encoded signal is transmitted through a transmitter to a receiver provided in the apparatus to be controlled. The received signal is decoded in the apparatus to trigger the function represented by the received signal. The received signal from the remote-controlling commander may be used to perform functions associated with a VTR, such as timing of video recording, picture searching, channel timing, and the like.

22 Claims, 13 Drawing Sheets



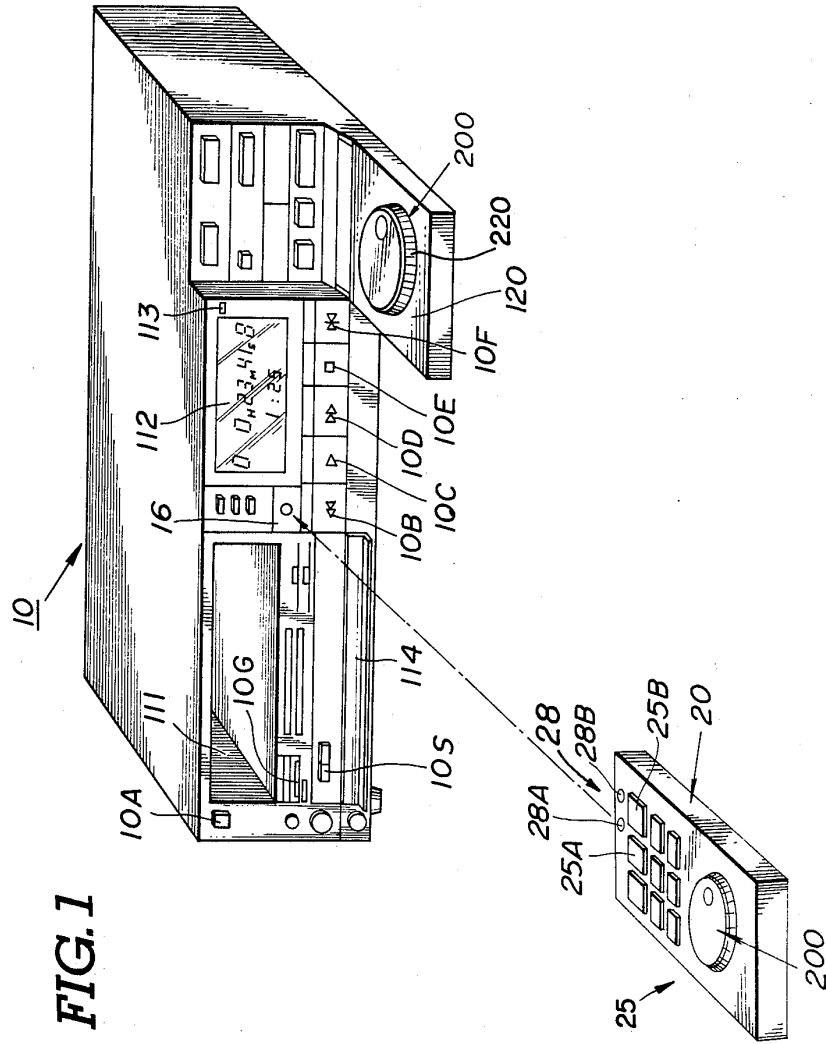


FIG. 1

FIG. 2

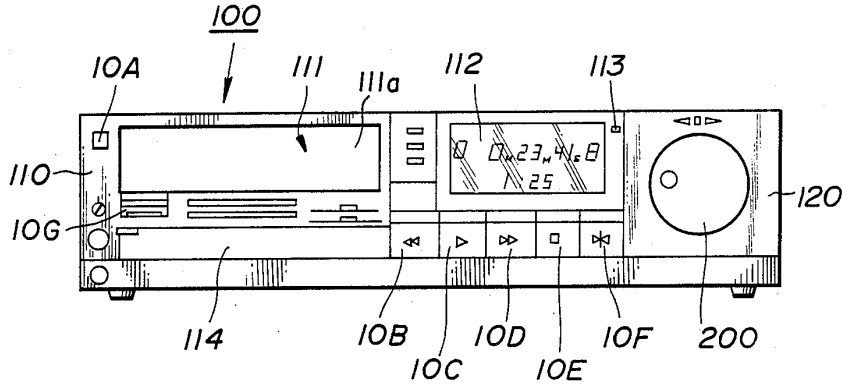


FIG. 5

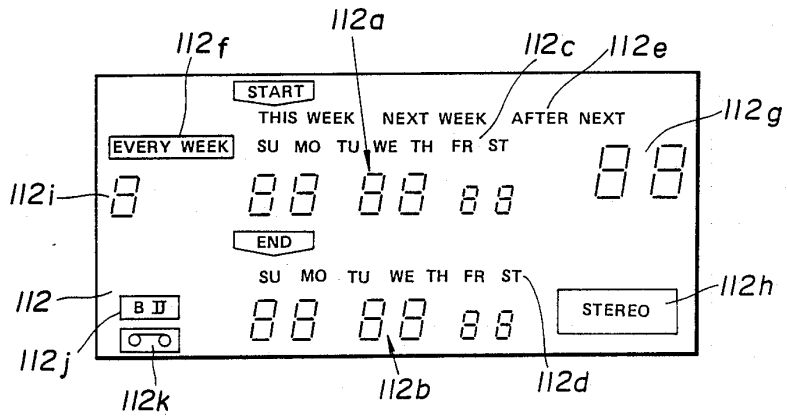


FIG. 3

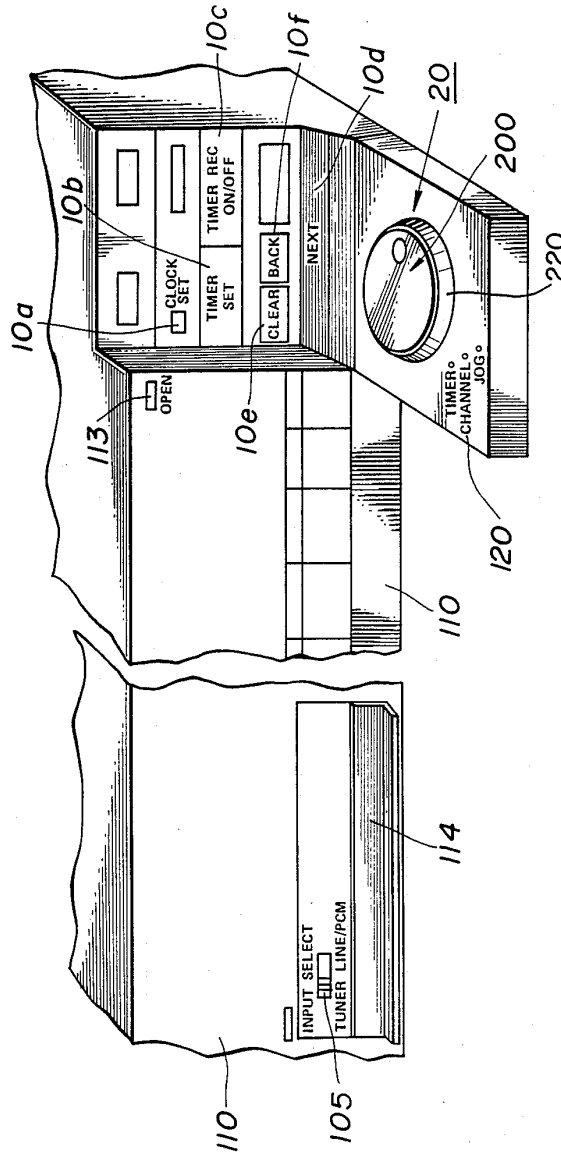


FIG. 4

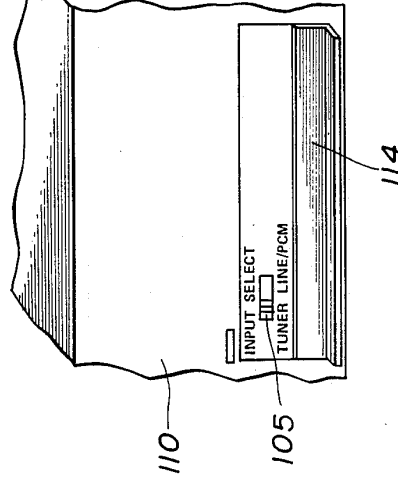
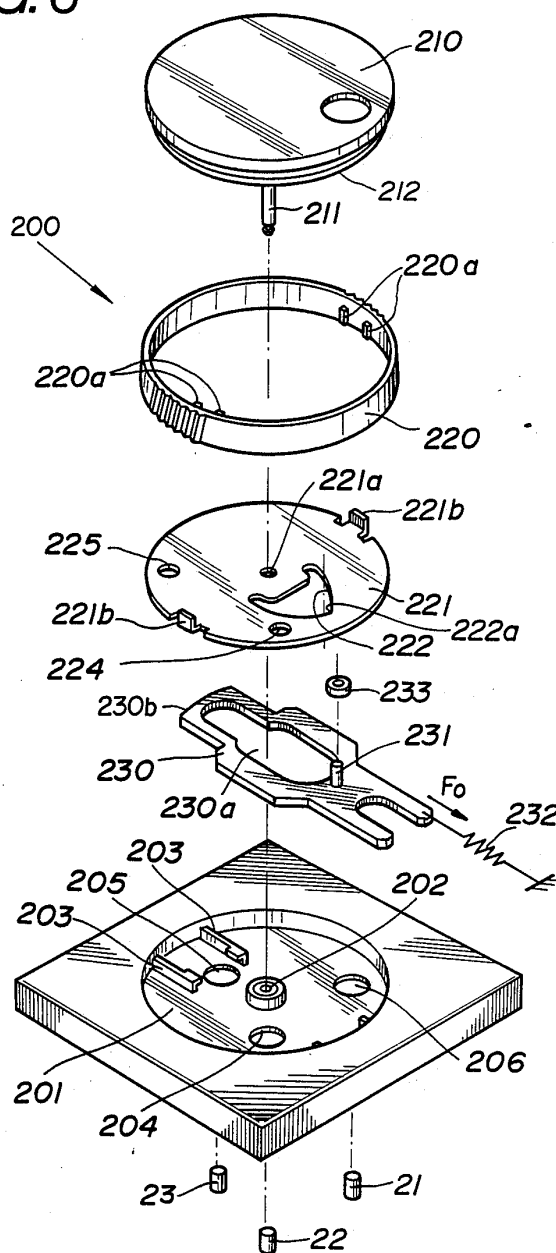


FIG. 6



Explore Litigation Insights

Docket Alarm provides insights to develop a more informed litigation strategy and the peace of mind of knowing you're on top of things.

Real-Time Litigation Alerts



Keep your litigation team up-to-date with **real-time alerts** and advanced team management tools built for the enterprise, all while greatly reducing PACER spend.

Our comprehensive service means we can handle Federal, State, and Administrative courts across the country.

Advanced Docket Research



With over 230 million records, Docket Alarm's cloud-native docket research platform finds what other services can't. Coverage includes Federal, State, plus PTAB, TTAB, ITC and NLRB decisions, all in one place.

Identify arguments that have been successful in the past with full text, pinpoint searching. Link to case law cited within any court document via Fastcase.

Analytics At Your Fingertips



Learn what happened the last time a particular judge, opposing counsel or company faced cases similar to yours.

Advanced out-of-the-box PTAB and TTAB analytics are always at your fingertips.

API

Docket Alarm offers a powerful API (application programming interface) to developers that want to integrate case filings into their apps.

LAW FIRMS

Build custom dashboards for your attorneys and clients with live data direct from the court.

Automate many repetitive legal tasks like conflict checks, document management, and marketing.

FINANCIAL INSTITUTIONS

Litigation and bankruptcy checks for companies and debtors.

E-DISCOVERY AND LEGAL VENDORS

Sync your system to PACER to automate legal marketing.