



US007324833B2

(12) **United States Patent**
White et al.

(10) **Patent No.:** **US 7,324,833 B2**
(45) **Date of Patent:** **Jan. 29, 2008**

(54) **SYSTEM AND METHOD FOR CONNECTING A PORTABLE AUDIO PLAYER TO AN AUTOMOBILE SOUND SYSTEM**

5,694,120 A 12/1997 Indekeu et al.
5,774,793 A 6/1998 Cooper et al. 455/418
5,870,680 A 2/1999 Guerlin et al. 455/557
5,900,564 A 5/1999 Kurakake

(75) Inventors: **Russell W. White**, Austin, TX (US);
Kevin R. Imes, Austin, TX (US)

(Continued)

(73) Assignee: **Affinity Labs, LLC**, Austin, TX (US)

OTHER PUBLICATIONS

U.S. Appl. No. 10/947,754, filed Sep. 23, 2004.

(*) Notice: Subject to any disclaimer, the term of this patent is extended or adjusted under 35 U.S.C. 154(b) by 0 days.

(Continued)

Primary Examiner—Erika A. Gary

(21) Appl. No.: **10/947,755**

(57) **ABSTRACT**

(22) Filed: **Sep. 23, 2004**

An audio system and method are disclosed. A system incorporating teachings of the present disclosure may include, for example, an electronic device having a display, a memory, an audio file player, and a housing component at least partially defining a cavity in which the memory and the audio file player are secured. In one embodiment, the electronic device may be a portable MP3 player. The system may also include a processor or playlist engine that can maintain a first playlist and a second playlist. In practice, the first playlist may include a selection of audio content having a corresponding audio file saved in the memory of the electronic device. In one embodiment, the system may also include an automobile having an automobile sound system that has a speaker and an in dash sound system component, which may be removably coupled to the electronic device via a cable. The in dash sound system component may have a selector, which may be, for example, a button, that allows a user to select the first playlist for outputting via the speaker. The cable interconnecting the electronic device and the in dash sound system component may be capable of providing power to the electronic device in addition to communicatively coupling the electronic device to the automobile sound system.

(65) **Prior Publication Data**

US 2005/0049002 A1 Mar. 3, 2005

Related U.S. Application Data

(63) Continuation of application No. 09/537,812, filed on Mar. 28, 2000, now Pat. No. 7,187,947.

(51) **Int. Cl.**
H04Q 7/20 (2006.01)

(52) **U.S. Cl.** **455/556.1; 455/566; 455/557**

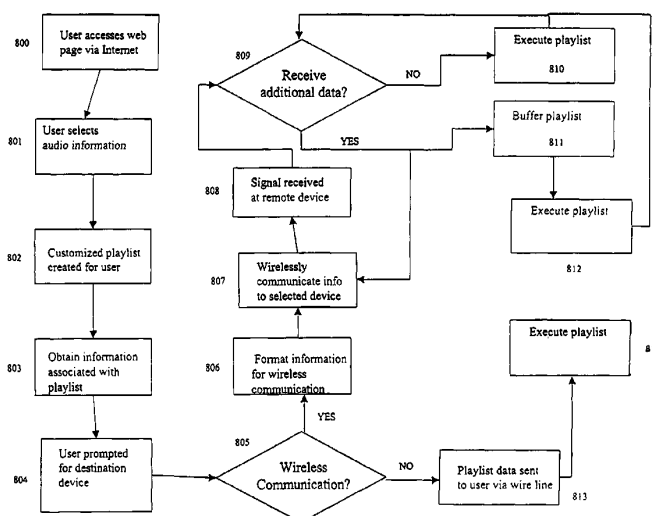
(58) **Field of Classification Search** None
See application file for complete search history.

(56) **References Cited**

U.S. PATENT DOCUMENTS

4,807,292 A * 2/1989 Sorscher 381/86
4,905,272 A 2/1990 Van de Mortel et al. ... 455/410
5,307,326 A 4/1994 Osawa 369/2
5,450,471 A 9/1995 Hanawa et al. 455/550.1
5,586,090 A 12/1996 Otte 369/2
5,587,560 A 12/1996 Crooks et al. 235/379
5,594,779 A 1/1997 Goodman

35 Claims, 9 Drawing Sheets



US 7,324,833 B2

Page 2

U.S. PATENT DOCUMENTS

5,940,767 A	8/1999	Bourgeois et al.	455/349	6,526,335 B1	2/2003	Treyz et al.	
5,953,005 A	9/1999	Liu		6,587,835 B1	7/2003	Treyz et al.	705/14
5,953,657 A	9/1999	Ghisler	455/414.1	6,591,085 B1*	7/2003	Grady	455/42
6,014,569 A	1/2000	Bottum		6,671,715 B1	12/2003	Langseth et al.	
6,029,064 A	2/2000	Farris et al.		6,694,200 B1*	2/2004	Naim	700/94
6,061,306 A*	5/2000	Buchheim	369/2	6,721,710 B1	4/2004	Lueck et al.	
6,088,730 A	7/2000	Kato et al.		6,741,980 B1	5/2004	Langseth et al.	
6,144,848 A	11/2000	Walsh et al.		6,772,212 B1*	8/2004	Lau et al.	709/228
6,167,253 A	12/2000	Farris et al.		6,788,528 B2*	9/2004	Enners et al.	361/683
6,199,076 B1	3/2001	Logan et al.		6,792,263 B1*	9/2004	Kite	455/412.1
6,230,322 B1*	5/2001	Saib et al.	725/40	6,792,615 B1	9/2004	Rowe et al.	
6,232,539 B1*	5/2001	Looney et al.	84/609	6,907,112 B1	6/2005	Guedalia et al.	
6,236,832 B1	5/2001	Ito		6,915,272 B1	7/2005	Zilliacus et al.	
6,240,297 B1	5/2001	Jadoul	455/557	6,956,833 B1	10/2005	Yukie et al.	
6,247,130 B1	6/2001	Fritsch		6,975,835 B1	12/2005	Lake et al.	
6,292,440 B1*	9/2001	Lee	369/7	7,065,342 B1*	6/2006	Rolf	455/412.1
6,314,094 B1	11/2001	Boys		2002/0023028 A1*	2/2002	Quarendon et al.	705/26
6,339,706 B1	1/2002	Tillgren et al.		2002/0046084 A1	4/2002	Steele et al.	
6,396,769 B1	5/2002	Polany	367/131	2003/0008646 A1	1/2003	Shanahan	455/418
6,401,085 B1	6/2002	Gershman et al.		2004/0078274 A1	4/2004	Aarnio	
6,407,750 B1	6/2002	Gioscia et al.		2005/0010633 A1	1/2005	Shanahan	455/418
6,418,138 B1	7/2002	Cerf et al.		2005/0049002 A1*	3/2005	White et al.	455/556.1
6,420,975 B1*	7/2002	DeLine et al.	340/815.4	2005/0054379 A1	3/2005	Cao et al.	
6,496,205 B1	12/2002	White et al.		2005/0096018 A1*	5/2005	White et al.	455/414.1
6,496,692 B1	12/2002	Shanahan	455/418				
6,509,716 B2	1/2003	Yi					
6,510,210 B1	1/2003	Baughan	455/418				
6,516,466 B1	2/2003	Jackson					

OTHER PUBLICATIONS

U.S. Appl. No. 60/167,179, filed Nov. 23, 1999.
U.S. Appl. No. 09/234,259, filed Jan. 20, 1999.

* cited by examiner

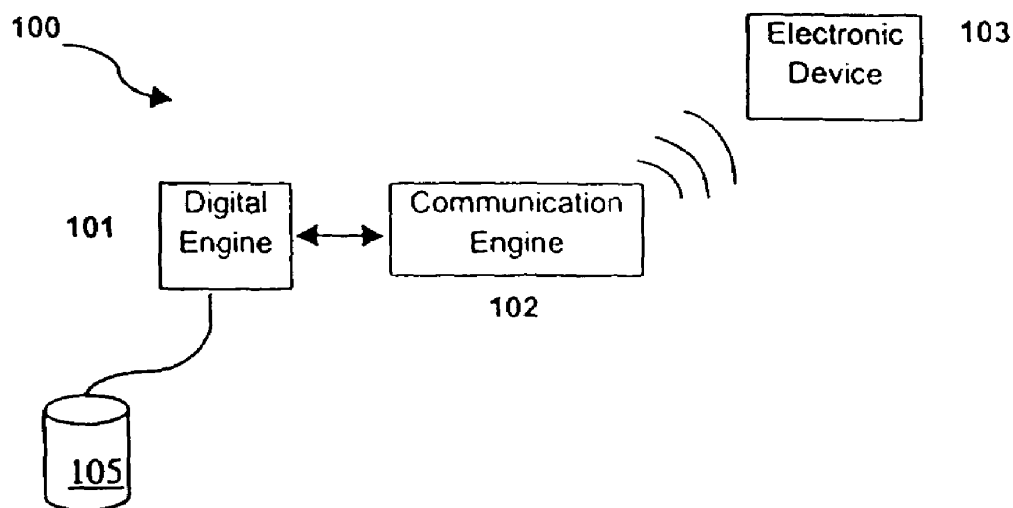


FIG. 1

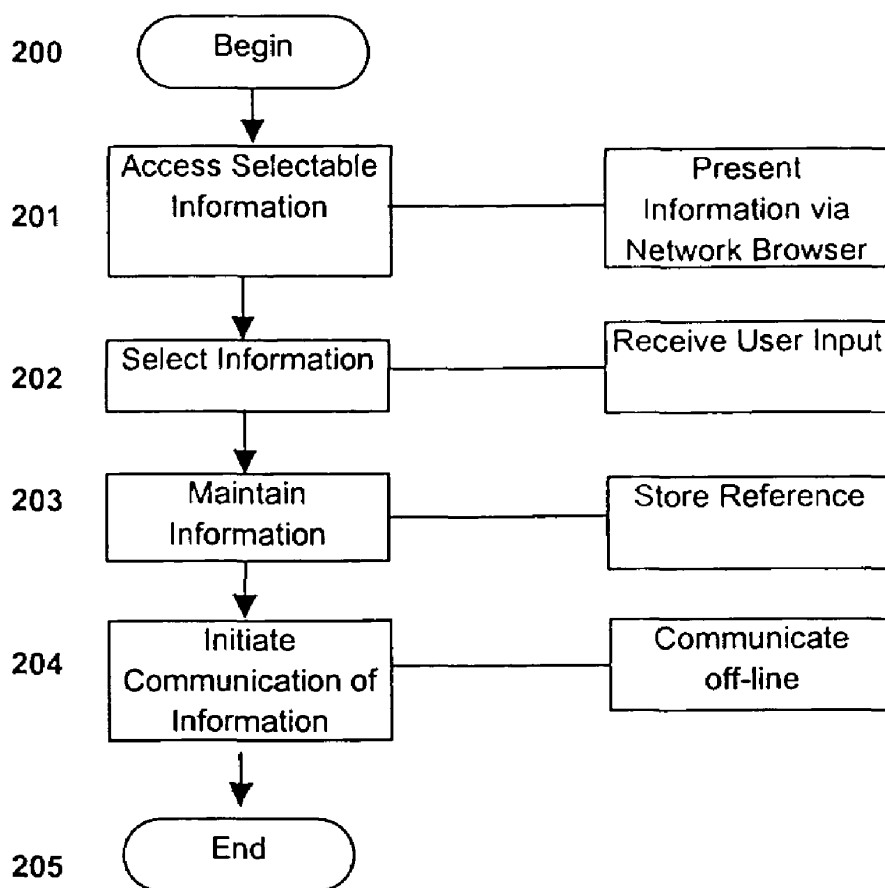


FIG. 2

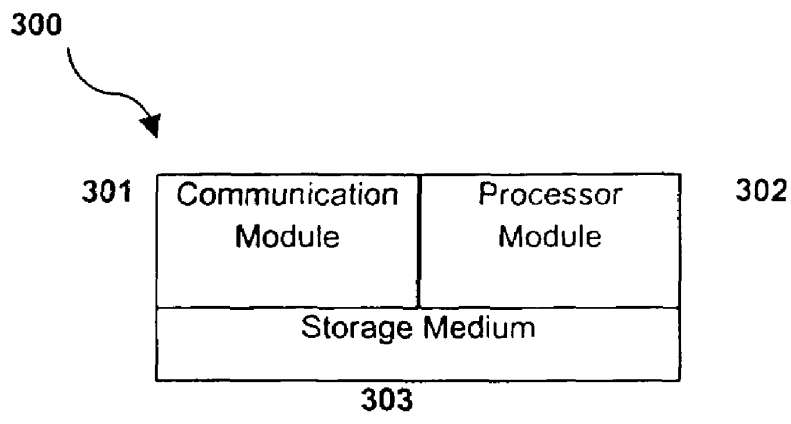


FIG. 3

Explore Litigation Insights

Docket Alarm provides insights to develop a more informed litigation strategy and the peace of mind of knowing you're on top of things.

Real-Time Litigation Alerts



Keep your litigation team up-to-date with **real-time alerts** and advanced team management tools built for the enterprise, all while greatly reducing PACER spend.

Our comprehensive service means we can handle Federal, State, and Administrative courts across the country.

Advanced Docket Research



With over 230 million records, Docket Alarm's cloud-native docket research platform finds what other services can't. Coverage includes Federal, State, plus PTAB, TTAB, ITC and NLRB decisions, all in one place.

Identify arguments that have been successful in the past with full text, pinpoint searching. Link to case law cited within any court document via Fastcase.

Analytics At Your Fingertips



Learn what happened the last time a particular judge, opposing counsel or company faced cases similar to yours.

Advanced out-of-the-box PTAB and TTAB analytics are always at your fingertips.

API

Docket Alarm offers a powerful API (application programming interface) to developers that want to integrate case filings into their apps.

LAW FIRMS

Build custom dashboards for your attorneys and clients with live data direct from the court.

Automate many repetitive legal tasks like conflict checks, document management, and marketing.

FINANCIAL INSTITUTIONS

Litigation and bankruptcy checks for companies and debtors.

E-DISCOVERY AND LEGAL VENDORS

Sync your system to PACER to automate legal marketing.