



US006756757B2

(12) **United States Patent**
Marcinkiewicz et al.

(10) **Patent No.:** US 6,756,757 B2

(45) **Date of Patent:** Jun. 29, 2004

(54) **CONTROL SYSTEM AND METHOD FOR A ROTATING ELECTROMAGNETIC MACHINE**

6,498,449 B1 * 12/2002 Chen et al. 318/434
6,498,451 B1 * 12/2002 Boules et al. 318/661

FOREIGN PATENT DOCUMENTS

EP 1061640 A 12/2000

OTHER PUBLICATIONS

Tae Kyoon Ha et al, "Simple and high-performance drive of switched reluctance motors for low-cost applications," Industrial Electronics, 1997, ISIE '97, Proceedings of the IEEE International Symposium on Guimaraes, Portugal Jul. 7-11, 1997, New York, NY, Usa, IEEE, US, Jul. 7, 1997, pp. 631-636, XP01265098 ISBN 0-7803-3936-3.

(List continued on next page.)

(75) **Inventors:** Joseph G. Marcinkiewicz, St. Charles, MO (US); Michael I. Henderson, St. Louis, MO (US)

(73) **Assignee:** Emerson Electric Company, St. Louis, MO (US)

(*) **Notice:** Subject to any disclaimer, the term of this patent is extended or adjusted under 35 U.S.C. 154(b) by 0 days.

(21) **Appl. No.:** 10/153,414

(22) **Filed:** May 21, 2002

(65) **Prior Publication Data**

US 2003/0218444 A1 Nov. 27, 2003

(51) **Int. Cl.⁷** H02P 7/00

(52) **U.S. Cl.** 318/432; 318/434; 318/701

(58) **Field of Search** 318/700, 701, 318/661, 715, 561, 560, 601, 721, 802, 805, 806, 809, 632, 609, 254, 807, 432, 610, 803, 822, 439, 138; 323/220-354

(56) **References Cited**

U.S. PATENT DOCUMENTS

4,961,038 A * 10/1990 MacMinn 318/696
5,223,775 A * 6/1993 Mongeau 318/432
5,488,280 A 1/1996 Langreck 318/805
5,569,994 A 10/1996 Taylor et al. 318/700
5,834,918 A * 11/1998 Taylor et al. 318/601
5,841,262 A * 11/1998 Tang 318/701
5,852,355 A * 12/1998 Turner 318/701
5,962,999 A * 10/1999 Nakamura et al. 318/432
6,002,234 A 12/1999 Ohm et al. 318/729
6,005,364 A 12/1999 Acarnley 318/632
6,262,550 B1 7/2001 Kilman et al. 318/565
6,304,052 B1 * 10/2001 O'Meara et al. 318/700
6,452,357 B1 * 9/2002 Jahkonen 318/721

Primary Examiner—Rina Duda

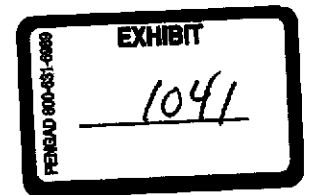
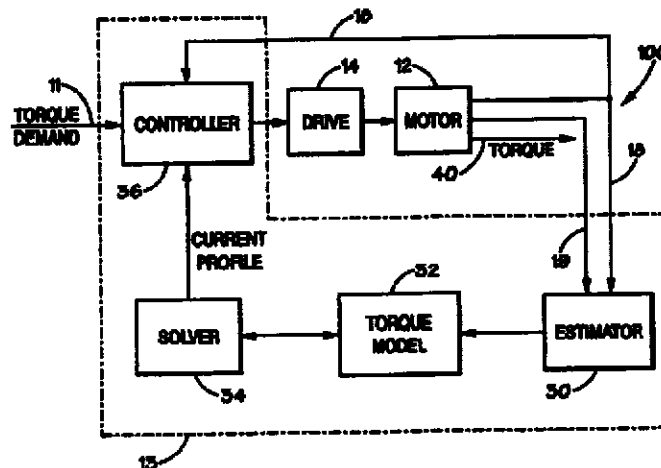
Assistant Examiner—Eduardo Colon Santana

(74) *Attorney, Agent, or Firm*—Howrey Simon Arnold & White LLP

(57) **ABSTRACT**

A system and method for controlling a rotating electromagnetic machine. The rotating machine, such as a permanent magnet motor or switched reluctance motor, includes a stator having a plurality of phase windings and a rotor that rotates relative to the stator. A drive is connected to the phase windings for energizing the windings. The control system includes an estimator connectable to the machine for receiving signals representing the phase winding voltage and rotor position. The estimator outputs parameter estimations for an electrical model of the machine based on the received voltage and rotor position. A torque model receives the parameter estimations from the estimator to estimate torque for associated rotor position-phase current combinations of the machine. A controller outputs a control signal to the drive in response to a torque demand and rotor position signals and the torque model. In certain embodiments, a solver uses the torque model to generate energization current profiles according to desired machine behavior, such as smooth torque and/or minimal sensitivity to errors in rotor position measurement.

35 Claims, 3 Drawing Sheets



BOM Exhibit 1041

OTHER PUBLICATIONS

Quo Qingding et al, "Neural network adaptive observer based position and velocity sensorless control of PMSM," Advanced Motion Control, 1996. AMC '96-MIE. Proceedings., 1996. 4th International Workshop on MIE, Japan Mar. 18-21, 1996, New York, NY, USA, IEEE, US Mar. 18, 1996, pp. 41-46, XP010164178 ISBN: 0-7803-3219-9.
International Search Report for International Application No. PCT/US03/15773, Oct. 6, 2003.
Krause et al, Analysis of Electric Machinery, 1986, Chapter One pp. 1-31.

Quarteroni et al, Numerical Mathematics, 2000, Chapter Seven pp. 281-287.

Wellstead et al, Self-Tuning Systems, 1991, Chapter Three pp. 71-91.

Akhiezer et al, Theory of Linear Operators in Hilbert Space, 1993, pp. 10-17.

Chapman et al, Design and Precise Realization of Optimized Current Waveforms for an 8/6 Switched Reluctance Drive, Jan. 2002.

* cited by examiner

FIG. 1

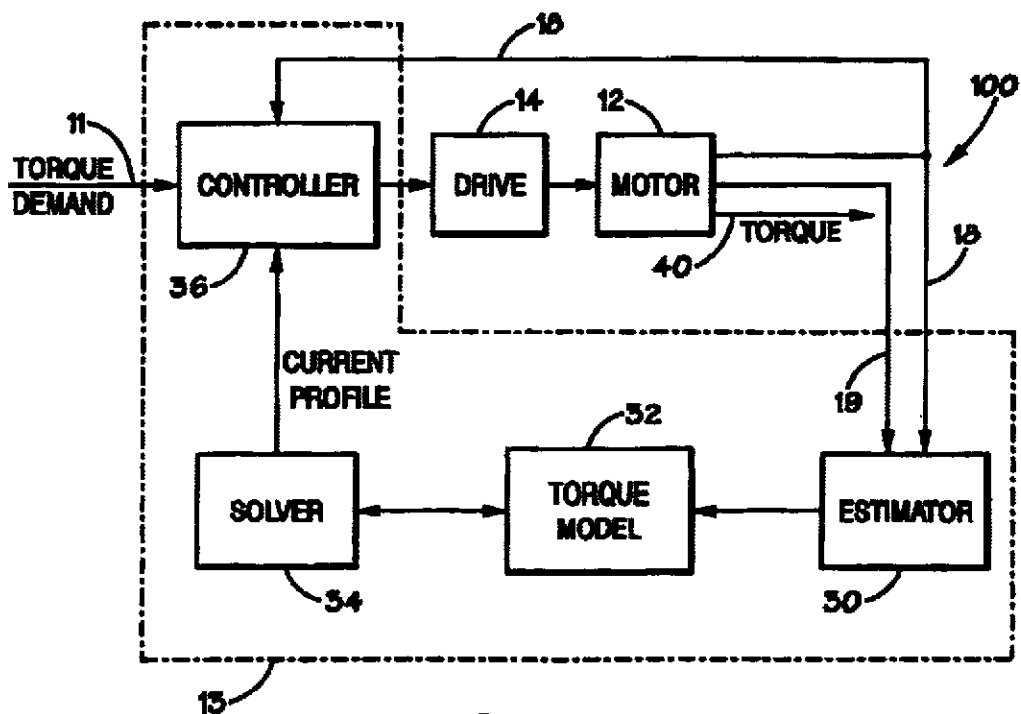
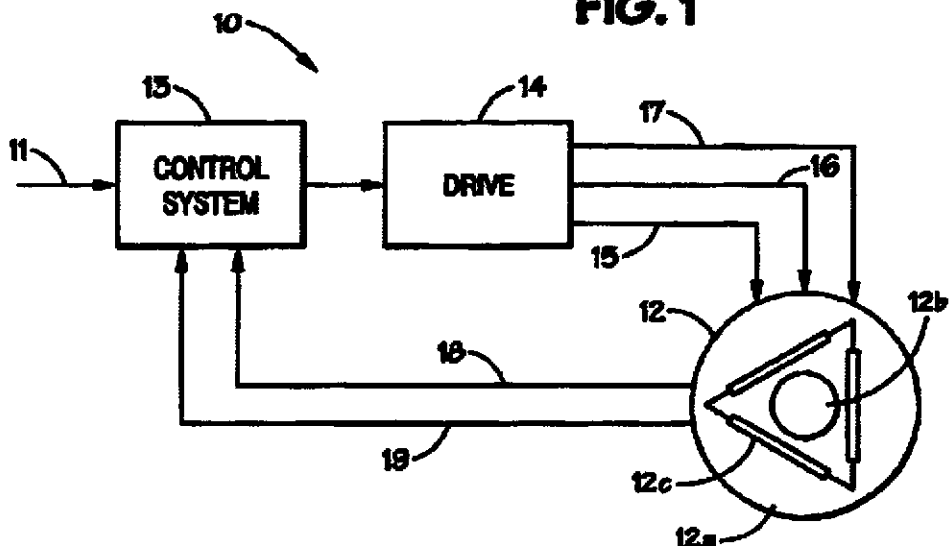


FIG. 2

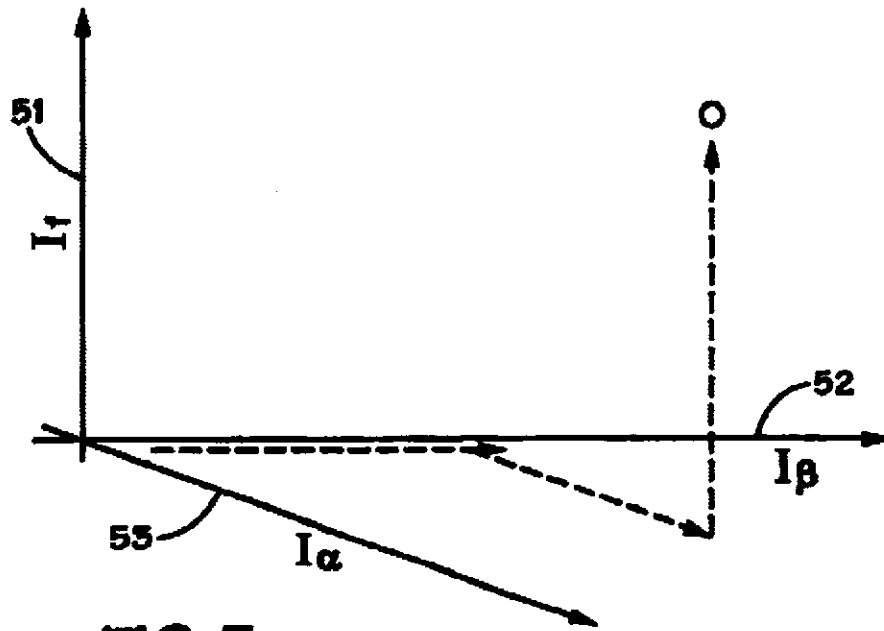


FIG. 3

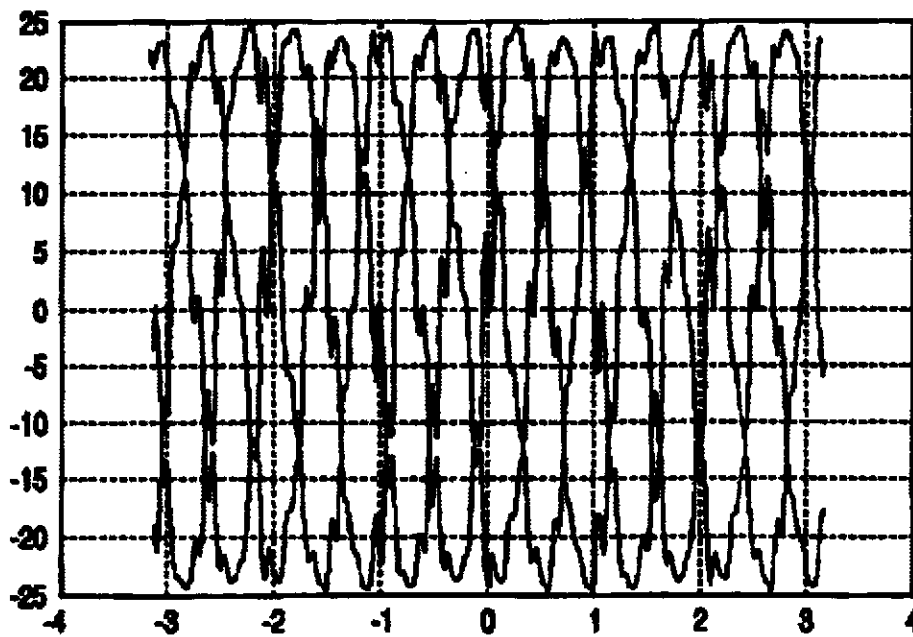


FIG. 4

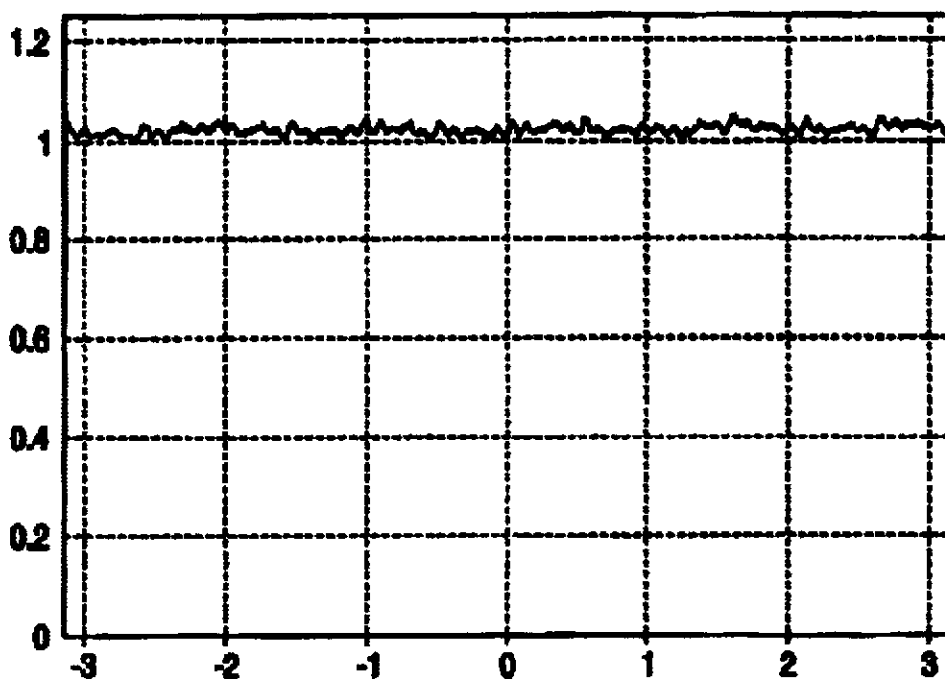


FIG. 5

Explore Litigation Insights

Docket Alarm provides insights to develop a more informed litigation strategy and the peace of mind of knowing you're on top of things.

Real-Time Litigation Alerts



Keep your litigation team up-to-date with **real-time alerts** and advanced team management tools built for the enterprise, all while greatly reducing PACER spend.

Our comprehensive service means we can handle Federal, State, and Administrative courts across the country.

Advanced Docket Research



With over 230 million records, Docket Alarm's cloud-native docket research platform finds what other services can't. Coverage includes Federal, State, plus PTAB, TTAB, ITC and NLRB decisions, all in one place.

Identify arguments that have been successful in the past with full text, pinpoint searching. Link to case law cited within any court document via Fastcase.

Analytics At Your Fingertips



Learn what happened the last time a particular judge, opposing counsel or company faced cases similar to yours.

Advanced out-of-the-box PTAB and TTAB analytics are always at your fingertips.

API

Docket Alarm offers a powerful API (application programming interface) to developers that want to integrate case filings into their apps.

LAW FIRMS

Build custom dashboards for your attorneys and clients with live data direct from the court.

Automate many repetitive legal tasks like conflict checks, document management, and marketing.

FINANCIAL INSTITUTIONS

Litigation and bankruptcy checks for companies and debtors.

E-DISCOVERY AND LEGAL VENDORS

Sync your system to PACER to automate legal marketing.