



US00RE39059E

(19) **United States**
(12) **Reissued Patent**
Foster

(10) **Patent Number: US RE39,059 E**
(45) **Date of Reissued Patent: Apr. 4, 2006**

- (54) **COMPUTER PROGRAMMABLE REMOTE CONTROL**
- (75) Inventor: **William J. Foster**, Newport Beach, CA (US)
- (73) Assignee: **Universal Electronics Inc.**, Cypress, CA (US)
- (21) Appl. No.: **10/403,454**
- (22) Filed: **Mar. 31, 2003**

5,367,316	A	*	11/1994	Ikezaki	345/158
5,410,326	A	*	4/1995	Goldstein	348/734
5,450,079	A	*	9/1995	Dunaway	341/23
5,465,401	A	*	11/1995	Thompson	455/558
5,517,257	A	*	5/1996	Dunn et al.	348/734
5,537,463	A	*	7/1996	Escobosa et al.	379/102.01
5,675,390	A	*	10/1997	Schindler et al.	715/717
5,689,663	A	*	11/1997	Williams	715/721
5,721,850	A	*	2/1998	Farry et al.	345/700
5,774,063	A	*	6/1998	Berry et al.	340/825.69
5,886,697	A	*	3/1999	Naughton et al.	345/473
5,889,506	A	*	3/1999	Lopresti et al.	345/158
5,909,183	A	*	6/1999	Borgstahl et al.	340/825.22
6,313,851	B1	*	11/2001	Mathews et al.	345/718
6,597,374	B1	*	7/2003	Baker et al.	345/717
6,690,290	B1	*	2/2004	Young et al.	340/825.69
6,690,392	B1	*	2/2004	Wugoski	345/744

Related U.S. Patent Documents

Reissue of:

- (64) Patent No.: **6,211,870**
- Issued: **Apr. 3, 2001**
- Appl. No.: **09/111,547**
- Filed: **Jul. 7, 1998**

U.S. Applications:

- (60) Provisional application No. 60/051,848, filed on Jul. 7, 1997.
- (51) **Int. Cl.**
G09G 5/00 (2006.01)

- (52) **U.S. Cl.** **715/744; 715/827; 715/840; 715/716**
- (58) **Field of Classification Search** **345/700, 345/716-722, 744-747, 762-765, 771, 810, 345/835-839, 840-841, 970, 169, 172; 348/734, 348/563, 569; 725/37-38, 59-61; 715/700, 715/771, 716-722, 744-747, 762-765, 835-839, 715/810, 827, 970, 840-841, 169, 172**
See application file for complete search history.

(56) **References Cited**

U.S. PATENT DOCUMENTS

4,680,729	A	*	7/1987	Steinhart	345/173
4,746,919	A	*	5/1988	Reitmeier	340/825.56
4,856,081	A	*	8/1989	Smith	455/151.4
4,959,810	A	*	9/1990	Darbee et al.	398/112
5,212,553	A	*	5/1993	Maruoka	725/68
5,327,160	A	*	7/1994	Asher	345/156
5,335,276	A	*	8/1994	Thompson et al.	380/266

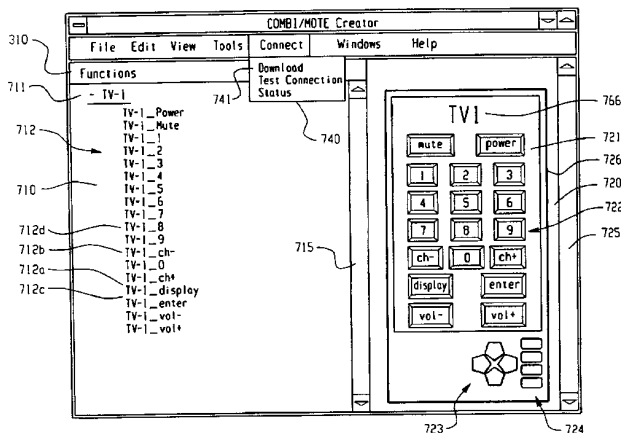
OTHER PUBLICATIONS

- “Take Control of Your Home,” Home Theater Buyer’s Guide, Spring 1997, pp. 40-48.*
- “Home Vision™ Interactive Intelligent Home Control,” Home Automation Systems Catalogue, p. 27, dated at least Feb., 1998.*
- “In Control,” Stereo Review, Aug. 1997, pp. 56-61.*
- * cited by examiner

Primary Examiner—Sy D. Luu
(74) *Attorney, Agent, or Firm*—Gary R. Jarosik
(57) **ABSTRACT**

A portable hand-held remote control unit device is disclosed which may be utilized for selecting designated functions in a plurality of remotely controllable multimedia processing units. Multiple user selectable screen objects may be created from a general purpose computer and transferred to the remote control unit. The screen objects include screen layout and descriptions of soft keys to be displayed on a graphic display of the remote control unit, as well as commands associated with the screen object, the soft keys and programmable keys on the remote control unit. The user may select any of the loaded screen objects for controlling various multimedia processing units, for performing complex functions of commands to various multimedia processing units.

30 Claims, 10 Drawing Sheets



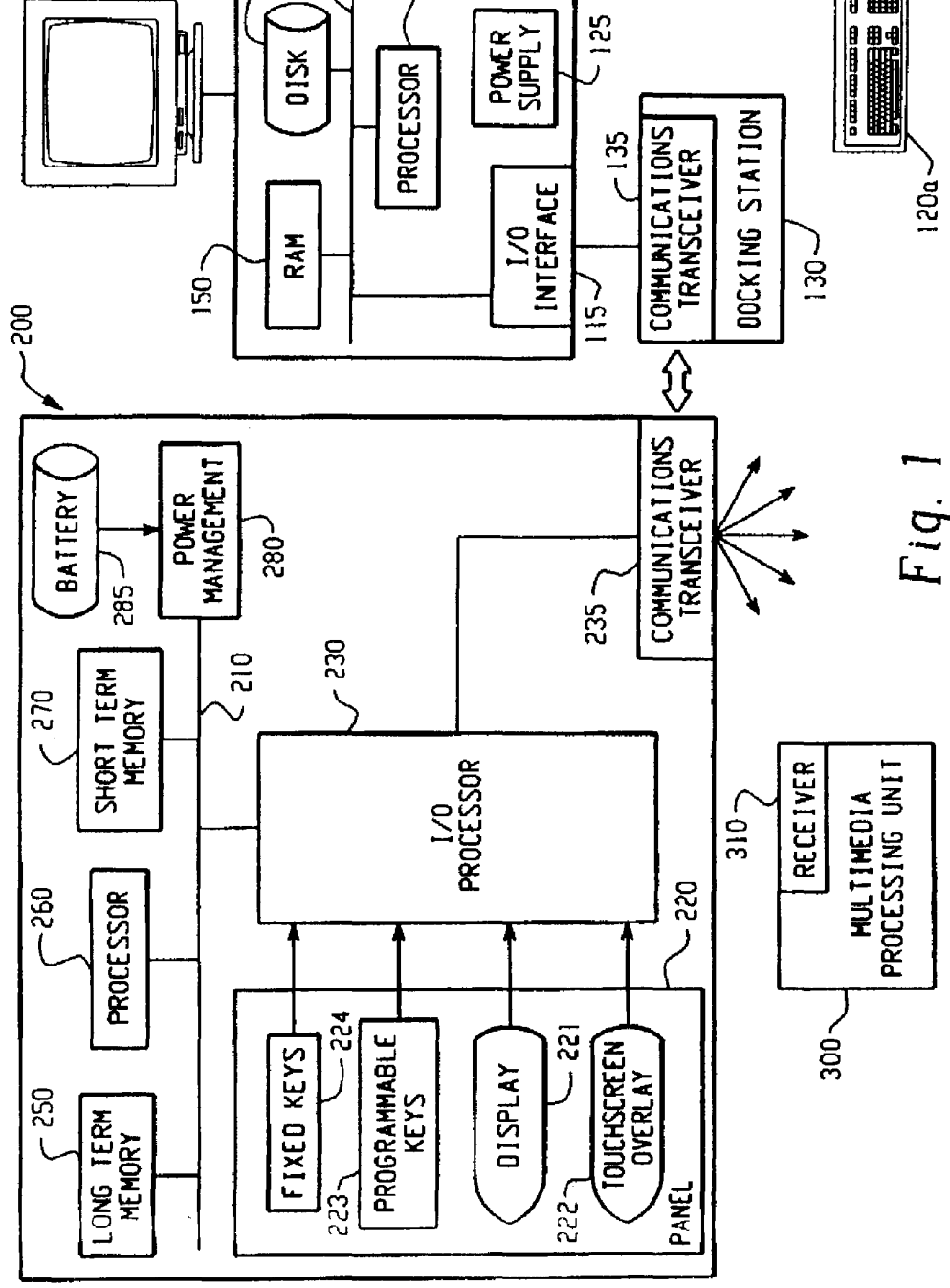


Fig. 1

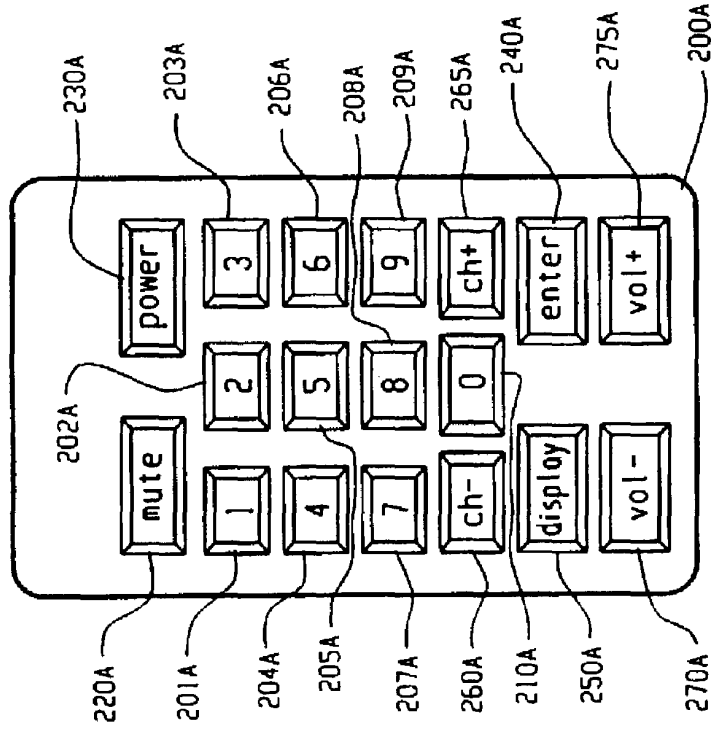


Fig. 2A
PRIOR ART.

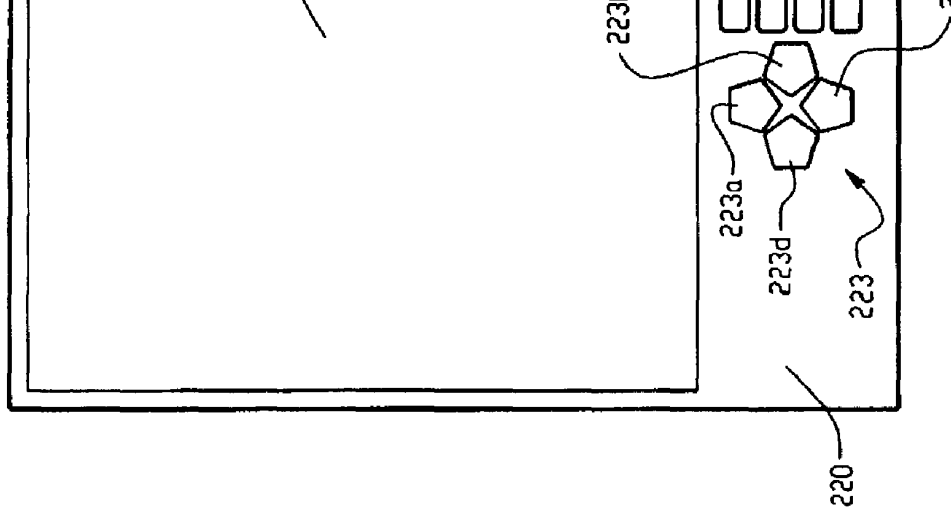


Fig. 2B

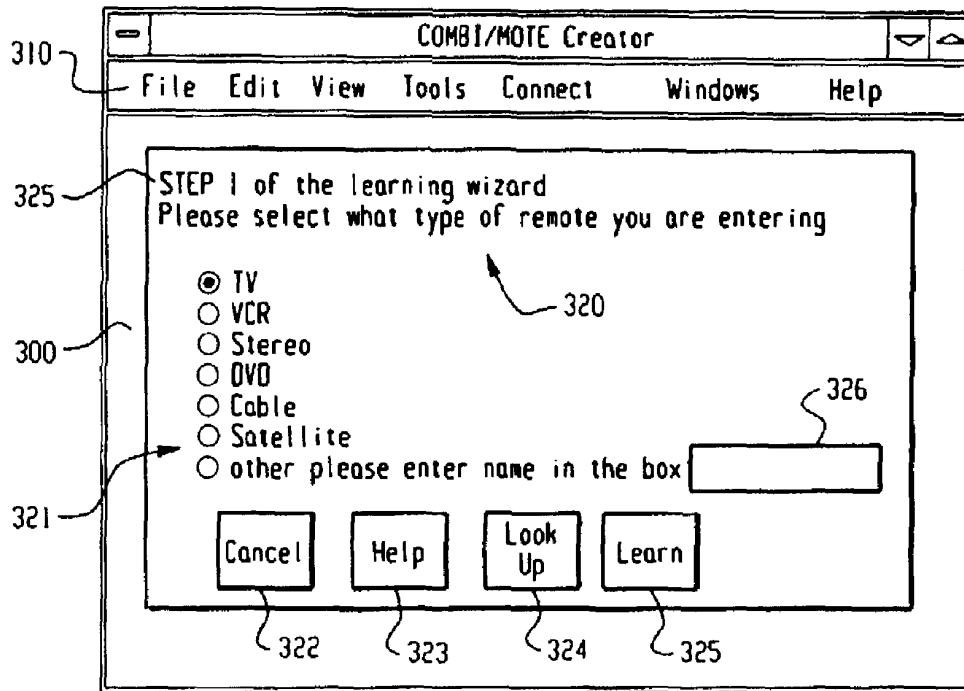


Fig. 3

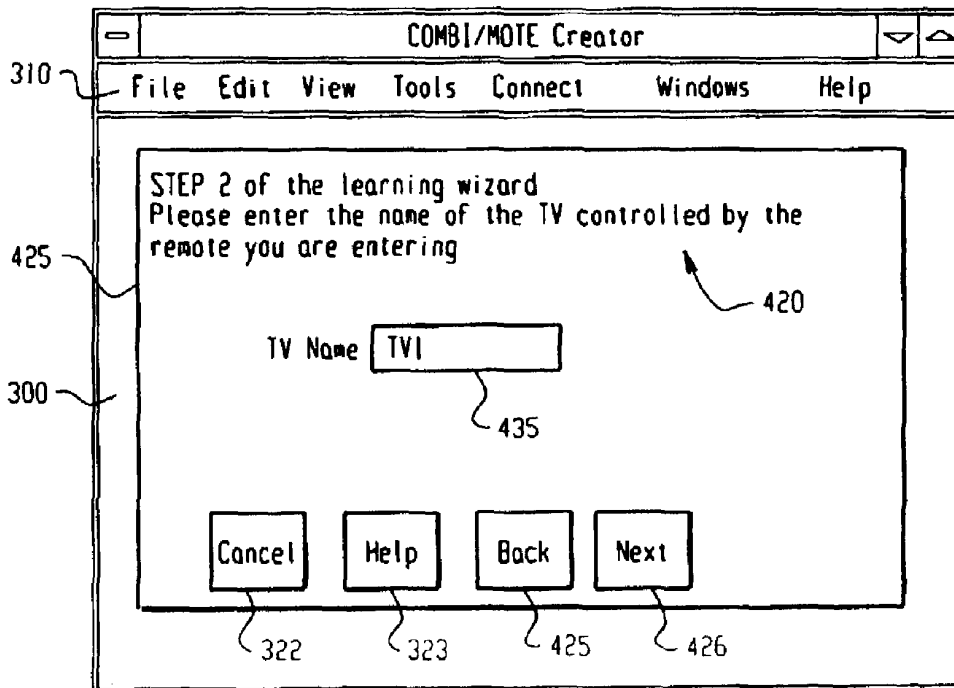


Fig. 4

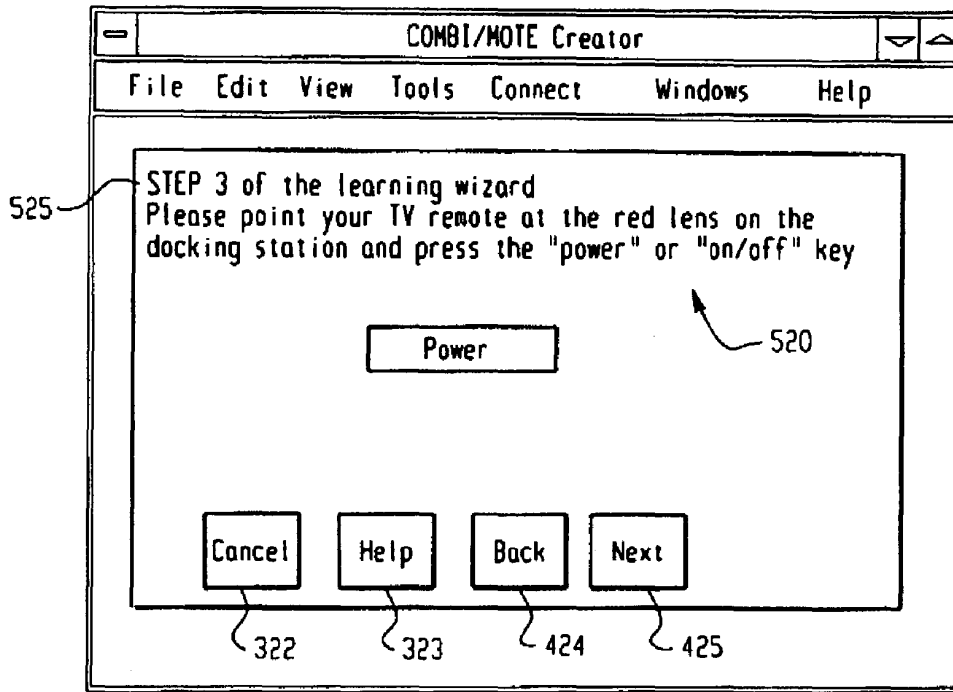


Fig. 5

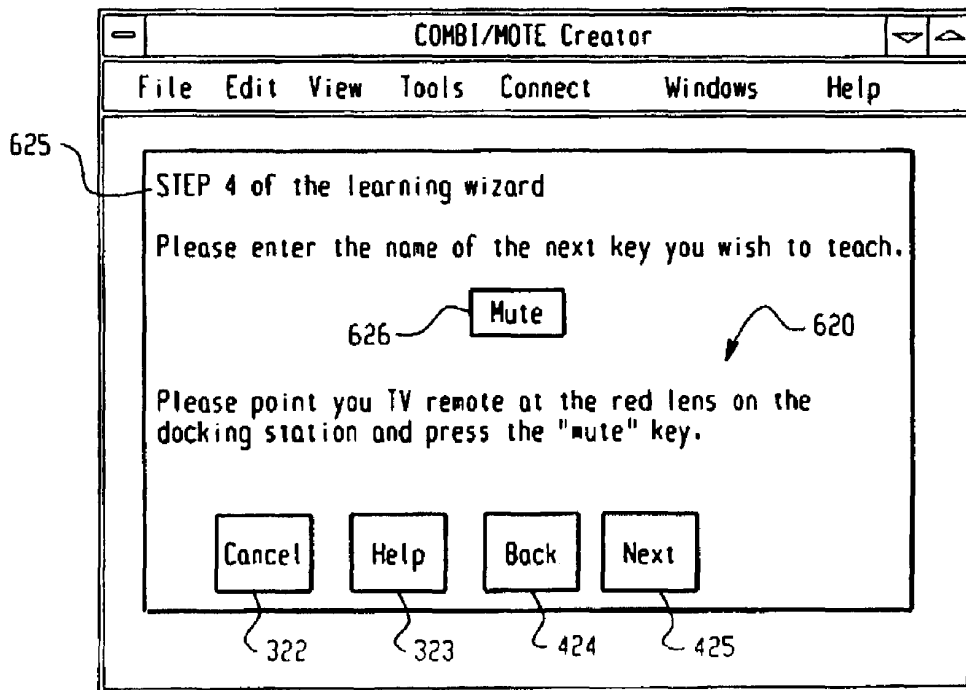


Fig. 6

Explore Litigation Insights

Docket Alarm provides insights to develop a more informed litigation strategy and the peace of mind of knowing you're on top of things.

Real-Time Litigation Alerts



Keep your litigation team up-to-date with **real-time alerts** and advanced team management tools built for the enterprise, all while greatly reducing PACER spend.

Our comprehensive service means we can handle Federal, State, and Administrative courts across the country.

Advanced Docket Research



With over 230 million records, Docket Alarm's cloud-native docket research platform finds what other services can't. Coverage includes Federal, State, plus PTAB, TTAB, ITC and NLRB decisions, all in one place.

Identify arguments that have been successful in the past with full text, pinpoint searching. Link to case law cited within any court document via Fastcase.

Analytics At Your Fingertips



Learn what happened the last time a particular judge, opposing counsel or company faced cases similar to yours.

Advanced out-of-the-box PTAB and TTAB analytics are always at your fingertips.

API

Docket Alarm offers a powerful API (application programming interface) to developers that want to integrate case filings into their apps.

LAW FIRMS

Build custom dashboards for your attorneys and clients with live data direct from the court.

Automate many repetitive legal tasks like conflict checks, document management, and marketing.

FINANCIAL INSTITUTIONS

Litigation and bankruptcy checks for companies and debtors.

E-DISCOVERY AND LEGAL VENDORS

Sync your system to PACER to automate legal marketing.