

Philips



User Guide

© 2000 Philips Electronics N.V.
All rights reserved.

ProntoEdit User Guide

The information in this manual is copyright-protected. No part of this manual may be copied or reproduced in any form without prior written consent from Philips Electronics N.V.

PHILIPS ELECTRONICS N.V. SHALL NOT BE LIABLE FOR OMISSIONS OR FOR TECHNICAL OR EDITORIAL ERRORS CONTAINED IN THIS MANUAL. PHILIPS ELECTRONICS N.V. SHALL NOT BE HELD LIABLE FOR INCIDENTAL OR CONSEQUENTIAL DAMAGES RESULTING FROM THE SUPPLYING OR USE OF THIS INFORMATION. PHILIPS ELECTRONICS N.V. SHALL NOT BE HELD LIABLE FOR INCIDENTAL OR CONSEQUENTIAL DAMAGES RESULTING FROM THE PERFORMANCE OR USE OF THE MATERIALS DESCRIBED IN THIS MANUAL.

The information in this manual may be subject to changes without prior notice.

The Pronto logo is a trademark of Philips Electronics N.V.

All other brand or product names are trademarks or registered trademarks of their respective companies or organizations.

version 2.0 – September, 2000

www.pronto.philips.com

Contents

Introduction	5
What is ProntoEdit?	5
What is ProntoEmulator?	6
ProntoEdit system requirements	7
ProntoEdit installation	7
What is a CCF?	8
What can I use ProntoEdit for?	9
How can this guide help me use ProntoEdit?	9
A note on menus	9
Loading and Saving	10
How do I upload a configuration from my Pronto?	10
How do I download a configuration into my Pronto?	11
How do I load a configuration from a CCF into ProntoEdit?	12
How do I save the configuration in ProntoEdit in a CCF?	13
Basic Tasks	14
How do I start with the factory default CCF?	14
How do I open a panel view?	14
How do I add a button to a panel?	15
How do I remove a button from a panel?	15
How do I move a button in a panel?	15
How do I copy a button?	15
How do I rename a button?	16
How do I change the font used in a button?	16
How do I copy all bitmaps from one button to another?	17
How do I assign an IR code to a button?	17
How do I assign an IR code to a direct-access or left/right key?	18
How do I assign a source switch IR code?	19

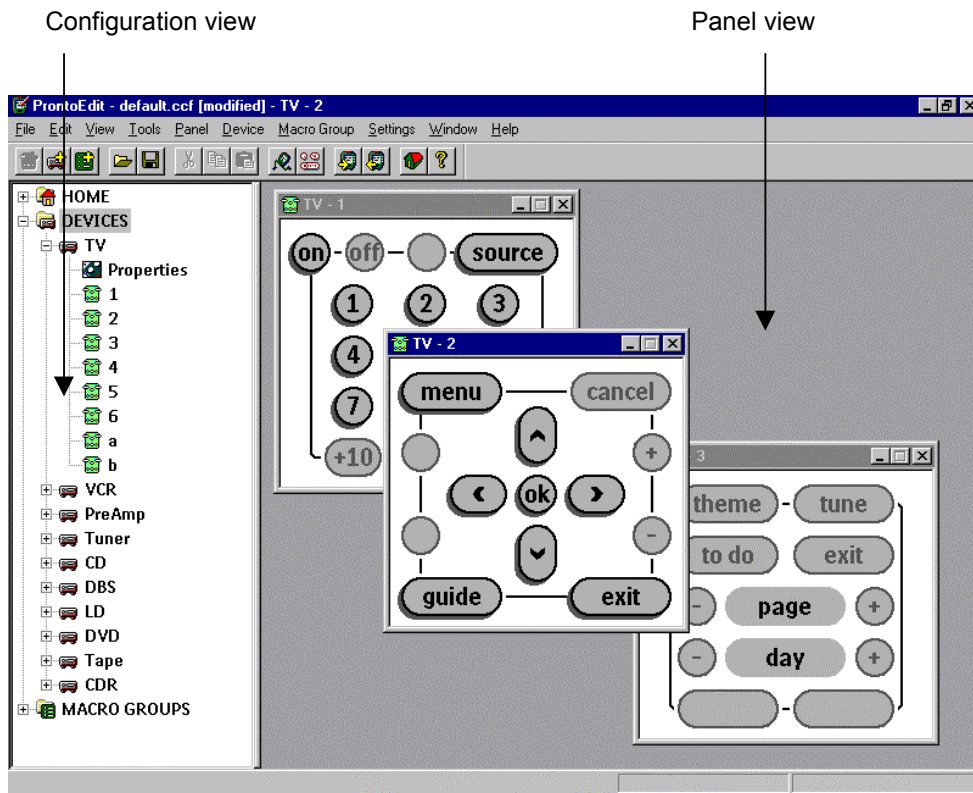
How do I let a button jump to a panel?	19
How do I move a panel?	19
How do I copy a panel?	20
How do I add a panel?	20
How do I move a device or macro group?	20
How do I copy a device or macro group?	20
How do I add a device or macro group?	21
How do I update the software in my Pronto?	21
Timers	22
How do I create — add a Timer Group?	22
How do I create — add a Timer Action	22
How do I repeat a Timer Action weekly?	22
Advanced Tasks	23
How do I resize a button or a frame?	23
How do I use my own bitmaps?	23
How do I create a macro?	24
How can I use panel view grids?	25
How can I better select in a panel view?	27
How can I make ProntoEmulator faster?	27
How can I make a screenshot in ProntoEmulator?	27
How can I create my own gallery?	27
How can I create my own default panels?	27
How can I write-protect a configuration?	28
How can I create my own home panels?	28
How can I copy a device from one CCF to another?	28
Troubleshooting	29
I cannot connect the Pronto to the serial port.	29
ProntoEdit was able to open the serial port to which my Pronto is connected but still cannot connect.	29

Introduction

What is ProntoEdit?

ProntoEdit is the visual editor for Pronto configurations. A Pronto configuration fully defines a Pronto user interface including all devices, macro groups, panel layouts, button appearances and the behavior of all buttons, direct-access and left/right keys (including all IR codes). ProntoEdit always has a single configuration open, the current configuration. See [What is a CCF?](#) for more information on Pronto configuration files.

ProntoEdit provides two complementary views on the current configuration. On the left side of ProntoEdit's main window you'll find the *configuration view*, a typical tree view of the overall structure of the current configuration. At the top level of this tree view you'll find **HOME**, **DEVICES** and **MACRO GROUPS**. These top levels are associated with the home section, the right hand side device menu and the left hand side macro group menu on your Pronto.



Underneath **DEVICES** is a list of devices, and underneath **MACRO GROUPS** is a list of macro groups. Underneath **HOME**, every device and every macro group is a property item and a list of panels. The property item underneath **HOME** provides access to the Pronto system properties, and the property item underneath a device or macro group provides access to the properties of that device or macro group. Included in these properties are the definitions of the direct-access and left/right keys.

On the right side of ProntoEdit's main window you'll find panel views. A panel view displays the contents of a panel as it is defined in the current configuration. Panel views provide an up to date view on the current configuration, and any changes to a panel view are immediately incorporated into the current configuration.

Explore Litigation Insights

Docket Alarm provides insights to develop a more informed litigation strategy and the peace of mind of knowing you're on top of things.

Real-Time Litigation Alerts



Keep your litigation team up-to-date with **real-time alerts** and advanced team management tools built for the enterprise, all while greatly reducing PACER spend.

Our comprehensive service means we can handle Federal, State, and Administrative courts across the country.

Advanced Docket Research



With over 230 million records, Docket Alarm's cloud-native docket research platform finds what other services can't. Coverage includes Federal, State, plus PTAB, TTAB, ITC and NLRB decisions, all in one place.

Identify arguments that have been successful in the past with full text, pinpoint searching. Link to case law cited within any court document via Fastcase.

Analytics At Your Fingertips



Learn what happened the last time a particular judge, opposing counsel or company faced cases similar to yours.

Advanced out-of-the-box PTAB and TTAB analytics are always at your fingertips.

API

Docket Alarm offers a powerful API (application programming interface) to developers that want to integrate case filings into their apps.

LAW FIRMS

Build custom dashboards for your attorneys and clients with live data direct from the court.

Automate many repetitive legal tasks like conflict checks, document management, and marketing.

FINANCIAL INSTITUTIONS

Litigation and bankruptcy checks for companies and debtors.

E-DISCOVERY AND LEGAL VENDORS

Sync your system to PACER to automate legal marketing.