

- [54] RECONFIGURABLE REMOTE CONTROL TRANSMITTER
- [75] Inventors: Benjamin F. Evans, Weatherford; Peter H. Haagen, Arlington; Paul J. Pempsell, Bedford, all of Tex.
- [73] Assignee: Tandy Corporation, Fort Worth, Tex.
- [21] Appl. No.: 66,853
- [22] Filed: Jun. 25, 1987
- [51] Int. Cl.<sup>4</sup> ..... H04B 9/00; H04N 5/44
- [52] U.S. Cl. .... 341/23; 340/825.56; 340/825.72; 358/194.1; 455/151; 455/353; 455/603; 341/176
- [58] Field of Search ..... 340/696, 825.69, 825.72, 340/825.56; 455/603, 352, 353, 151; 358/194.1

- [56] **References Cited**
- U.S. PATENT DOCUMENTS
- 4,623,887 11/1986 Welles, II ..... 340/825.69
- 4,626,848 12/1986 Ehlers ..... 358/194.1
- 4,712,105 12/1987 Köhler ..... 340/825.69

Primary Examiner—Glen R. Swann, III  
 Attorney, Agent, or Firm—Wolf, Greenfield & Sacks

[57] **ABSTRACT**

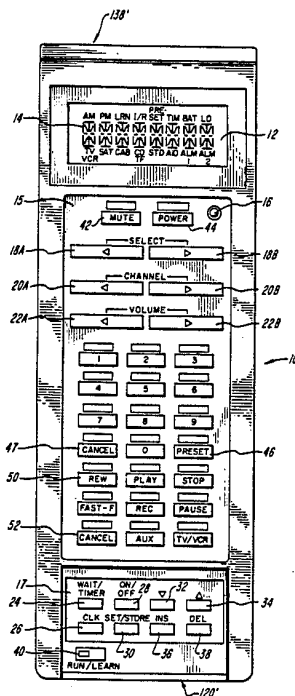
A reconfigurable remote control transmitter can be used with a plurality of remotely controlled products,

each of which is normally controlled with one or more signals from an associated remote control transmitter. The reconfigurable transmitter has a plurality of input keys and operates either in a Learn mode in which it may store indications of signals generated by the remote control transmitter from one or more of the products or a Run mode in which it selectively transmits stored signals in response to one or more keyed inputs. During the Learn mode a selected sequence of operations to be performed by one or more of the products in response to a first selected key sequence may be stored and during the Run mode stored signals are transmitted in a predetermined order in response to the performance of the selected key sequence to cause the selected sequence of operations to be performed.

The transmitter may also include one or more timers settable to a selected data and time, which may be utilized to control the transmitting of stored signals or signal sequences.

Finally, a means may be provided which is operative during the Learn mode for indicating that the signal being received by the transmitter from a remote transmitter is of proper strength to permit an indication thereof to be correctly stored.

27 Claims, 6 Drawing Sheets



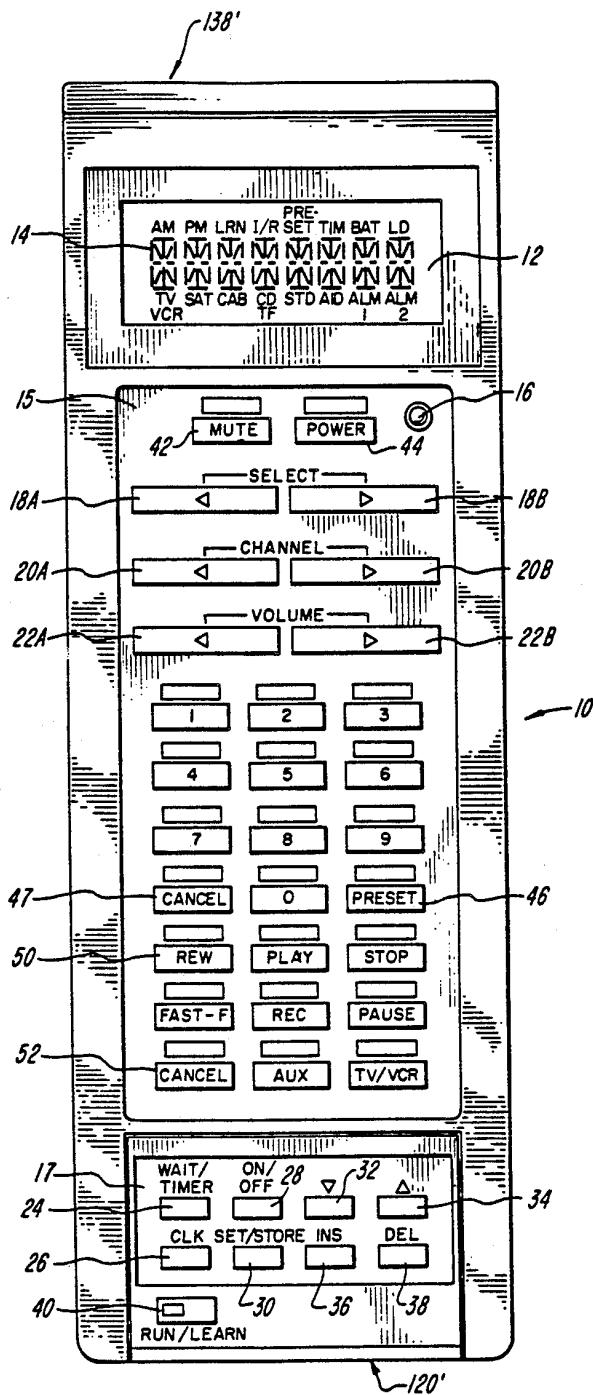


FIG. 1

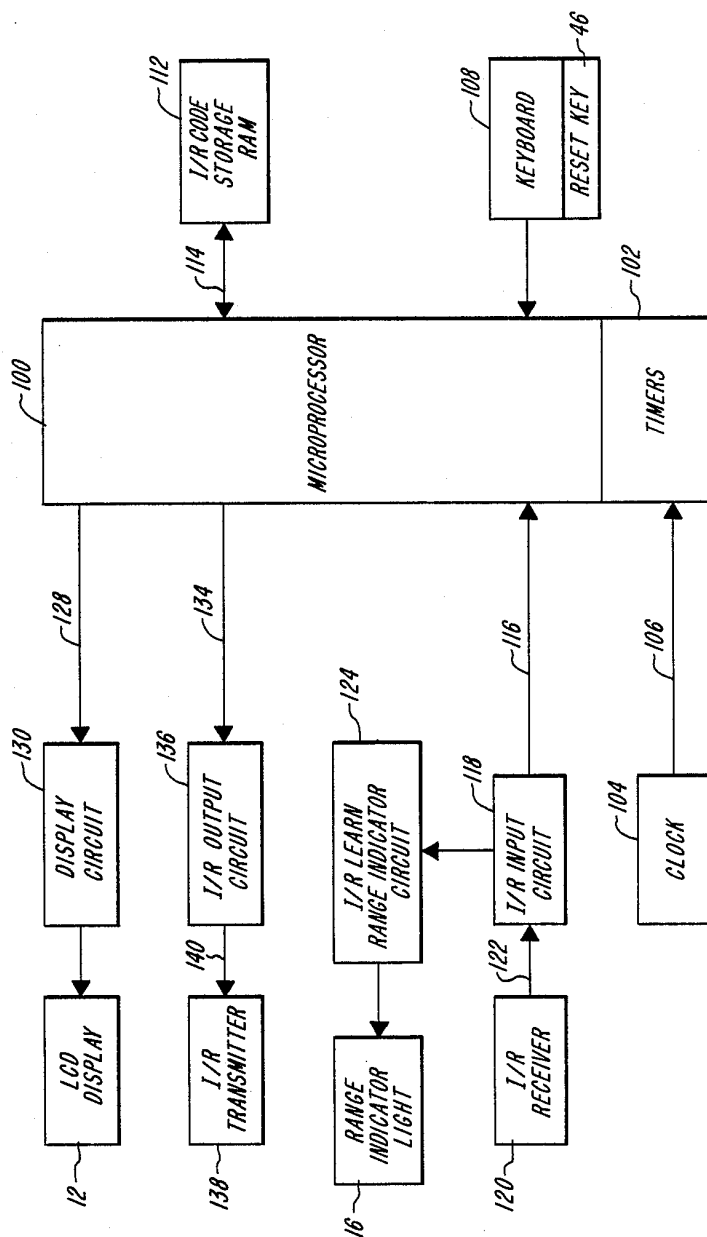
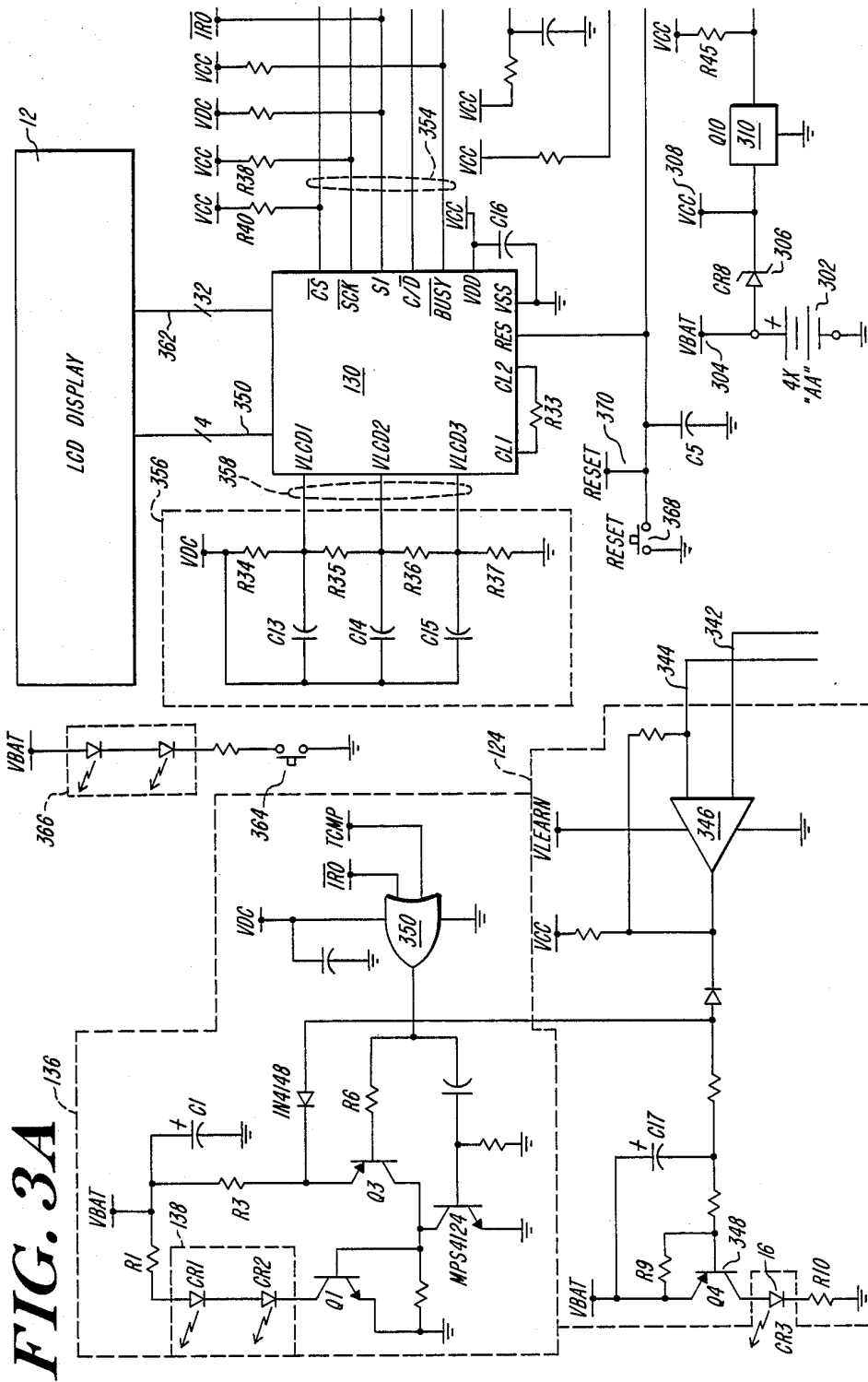


FIG. 2



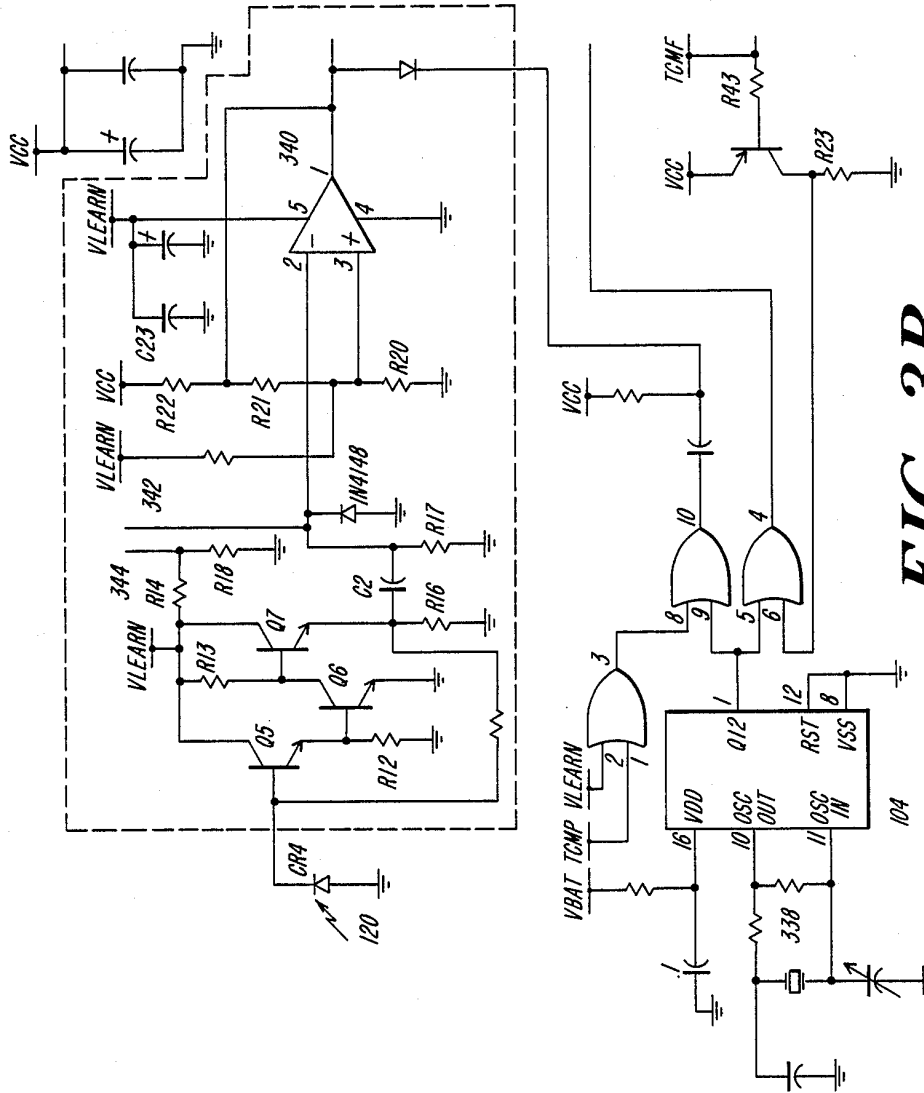


FIG. 3B

# Explore Litigation Insights

Docket Alarm provides insights to develop a more informed litigation strategy and the peace of mind of knowing you're on top of things.

## Real-Time Litigation Alerts



Keep your litigation team up-to-date with **real-time alerts** and advanced team management tools built for the enterprise, all while greatly reducing PACER spend.

Our comprehensive service means we can handle Federal, State, and Administrative courts across the country.

## Advanced Docket Research



With over 230 million records, Docket Alarm's cloud-native docket research platform finds what other services can't. Coverage includes Federal, State, plus PTAB, TTAB, ITC and NLRB decisions, all in one place.

Identify arguments that have been successful in the past with full text, pinpoint searching. Link to case law cited within any court document via Fastcase.

## Analytics At Your Fingertips



Learn what happened the last time a particular judge, opposing counsel or company faced cases similar to yours.

Advanced out-of-the-box PTAB and TTAB analytics are always at your fingertips.

## API

Docket Alarm offers a powerful API (application programming interface) to developers that want to integrate case filings into their apps.

## LAW FIRMS

Build custom dashboards for your attorneys and clients with live data direct from the court.

Automate many repetitive legal tasks like conflict checks, document management, and marketing.

## FINANCIAL INSTITUTIONS

Litigation and bankruptcy checks for companies and debtors.

## E-DISCOVERY AND LEGAL VENDORS

Sync your system to PACER to automate legal marketing.