



US005228077A

United States Patent [19]

[11] Patent Number: **5,228,077**

Darbee

[45] Date of Patent: **Jul. 13, 1993**

[54] **REMOTELY UPGRADABLE UNIVERSAL REMOTE CONTROL**

[75] Inventor: **Paul V. Darbee**, Santa Ana, Calif.

[73] Assignee: **Universal Electronics Inc.**,
Twinsburg, Ohio

[21] Appl. No.: **587,326**

[22] Filed: **Sep. 24, 1990**

Related U.S. Application Data

[63] Continuation-in-part of Ser. No. 127,999, Dec. 2, 1987,
Pat. No. 4,959,810.

[51] Int. Cl.⁵ **H04M 11/00**

[52] U.S. Cl. **379/102; 379/444;**
358/194.1; 358/142

[58] Field of Search **379/104, 105, 102, 443,**
379/444; 358/194.1, 142, 146, 147

[56] References Cited

U.S. PATENT DOCUMENTS

4,028,493	6/1977	Brennemann et al. .	
4,488,179	12/1984	Krüger et al.	358/194.1
4,503,288	3/1985	Kessler	379/104
4,599,491	7/1986	Serrano	379/444
4,625,080	11/1986	Scott	379/104
4,626,848	12/1986	Ehlers	358/194.1
4,885,766	12/1989	Yasuoka et al.	379/105
4,918,439	4/1990	Wozniak et al.	379/102

FOREIGN PATENT DOCUMENTS

2166322	4/1986	United Kingdom	379/102
2192743	1/1988	United Kingdom .	
8706416	10/1987	World Int. Prop. O.	358/194.1

OTHER PUBLICATIONS

I. Dorros, "Telephone nets go digital", IEEE Spectrum, Apr. 1983, pp. 48-53.

Primary Examiner—James L. Dwyer

Assistant Examiner—Wing F. Chan
Attorney, Agent, or Firm—Thomas R. Vigil

[57] ABSTRACT

The universal remote control system includes a universal remote control comprising an input including a set of keys or push buttons for inputting commands into the remote control, infrared signal output circuitry for supplying an infrared signal to a controlled device including IR lamp driver circuitry, a central processing unit (CPU) coupled to the input and to the signal output circuitry, a single, non-volatile read-write memory coupled to the CPU and data coupling circuitry including terminal structure comprising a receiving port coupled to the CPU for enabling code data for creating appropriate IR lamp driver instructions for causing the infrared signal output circuitry to emit infrared signals which will cause specific functions to occur in a specific controlled device, for operating a variety of devices to be controlled, to be supplied from outside the remote control through the receiving port of the terminal structure directly to the CPU for direct entry to the memory to enable the remote control to control various devices to be controlled upon the inputting of commands to the keys of the input. The universal remote control system further includes a data transmission system including coupling circuitry for coupling the terminal structure to a computer directly, through a modem to a telephone line, or through a television set to a television signal picked up by the television set, the coupling circuitry including a cable, a first connector for connection to the terminal structure at one end of the cable, and an interface connector at the other end of the cable for connecting directly to a computer, or through a modem and a telephone line to a computer, or to a television set which receives data in a television signal from a computer.

21 Claims, 18 Drawing Sheets

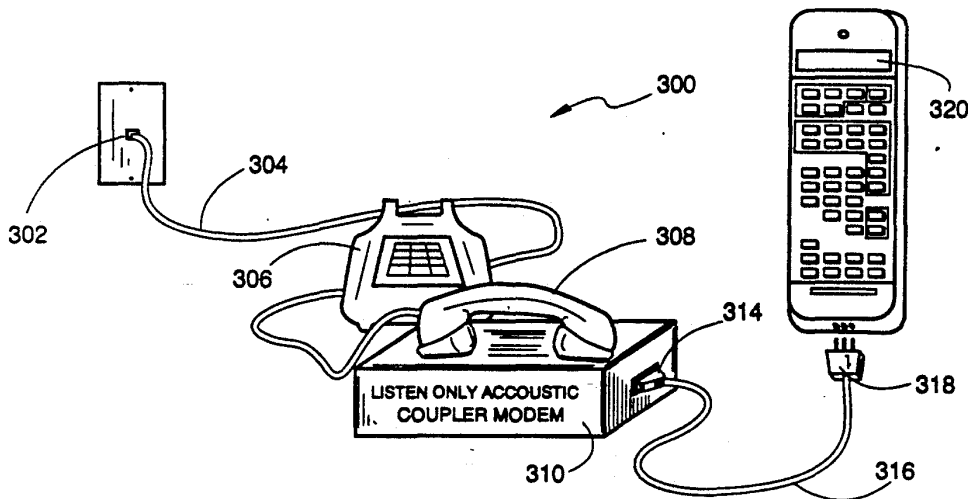
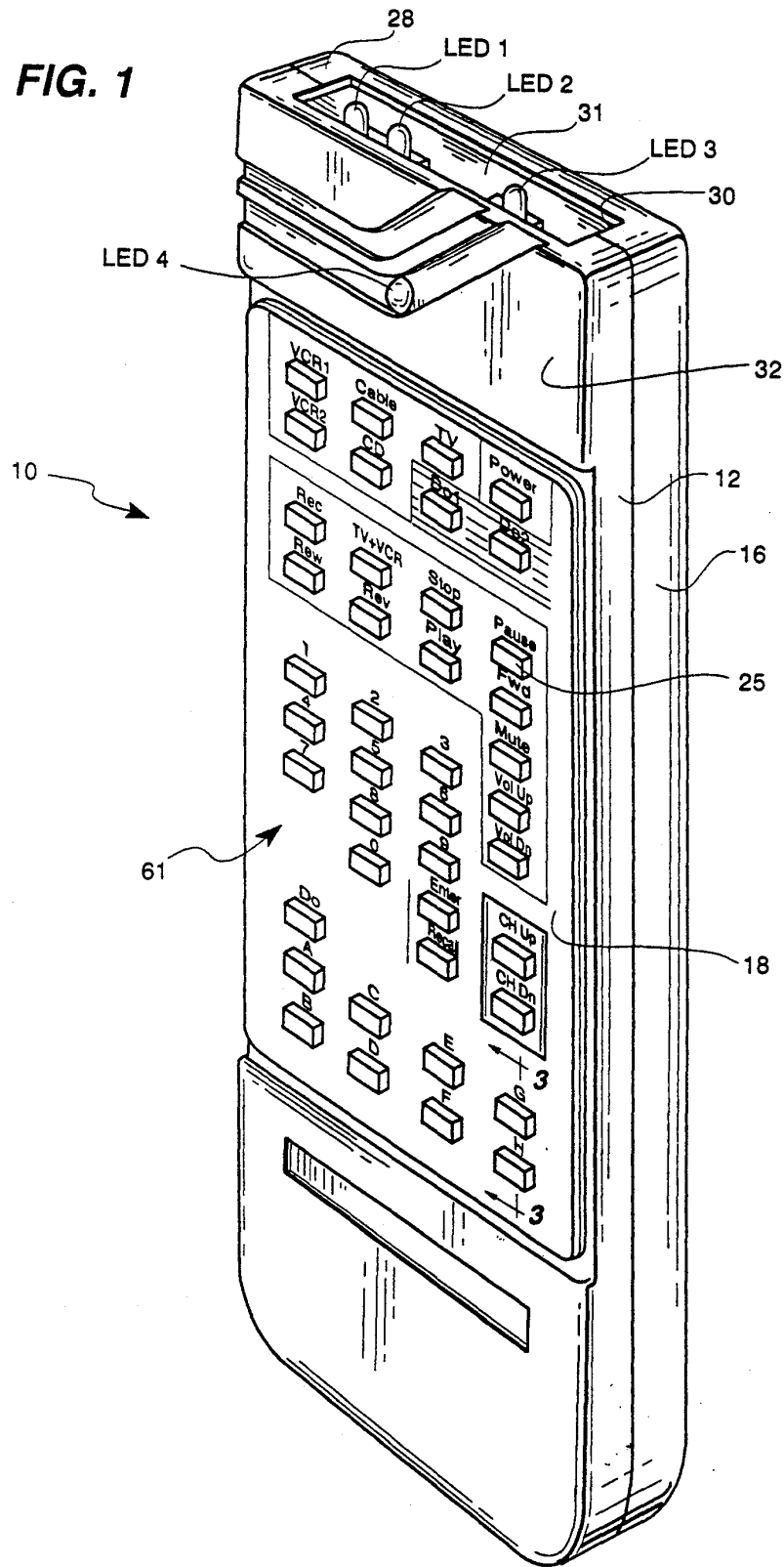


FIG. 1



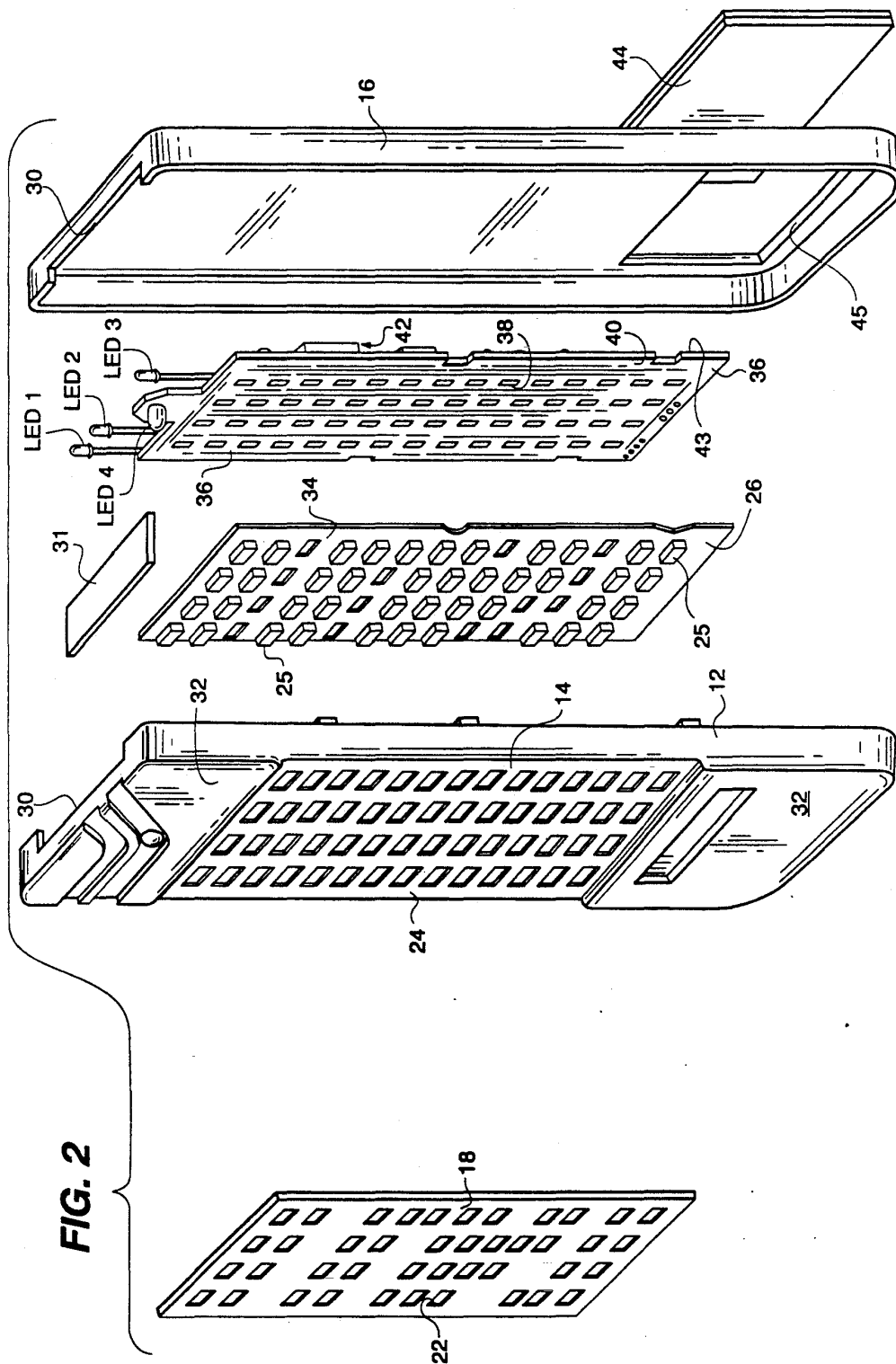


FIG. 2

FIG. 3

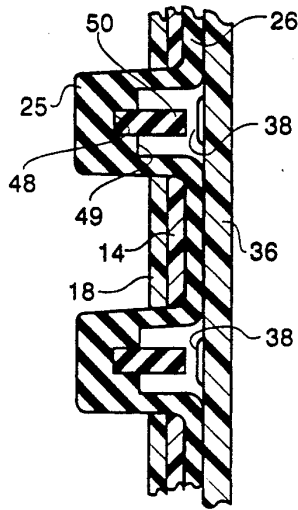


FIG. 4

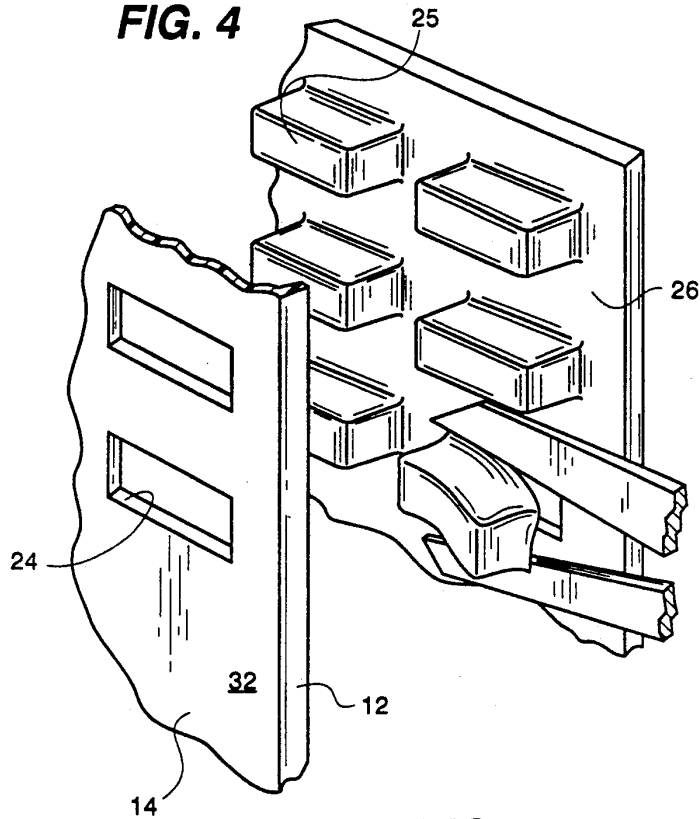


FIG. 5

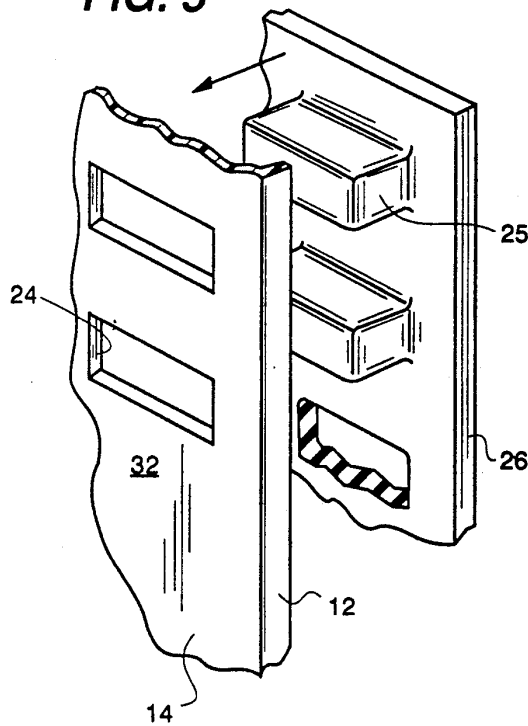


FIG. 6

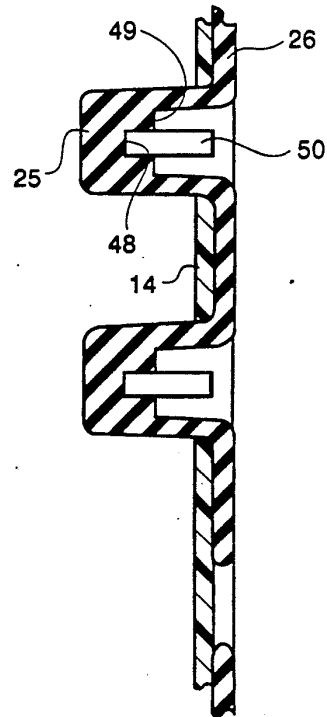
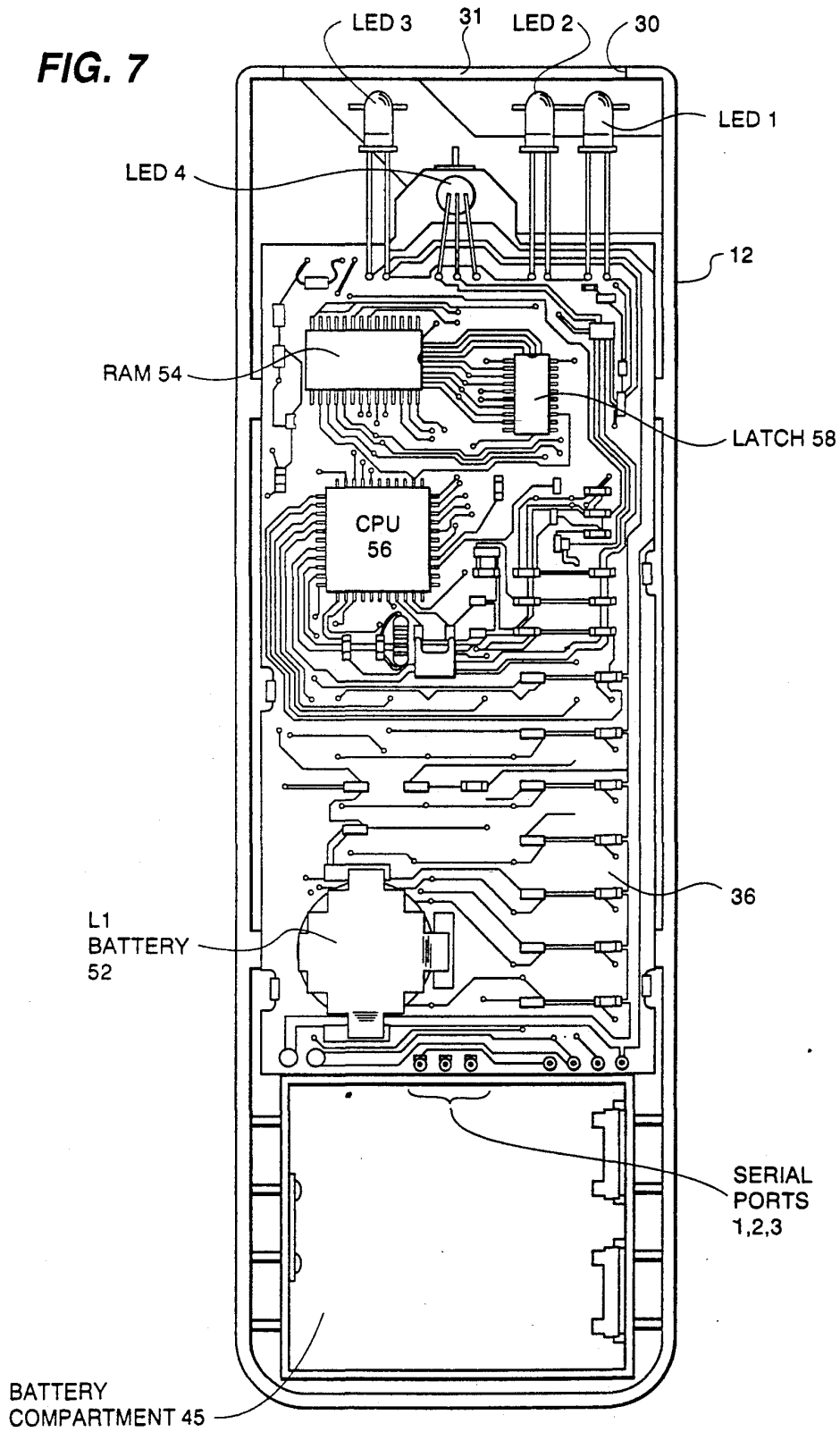


FIG. 7



Explore Litigation Insights

Docket Alarm provides insights to develop a more informed litigation strategy and the peace of mind of knowing you're on top of things.

Real-Time Litigation Alerts



Keep your litigation team up-to-date with **real-time alerts** and advanced team management tools built for the enterprise, all while greatly reducing PACER spend.

Our comprehensive service means we can handle Federal, State, and Administrative courts across the country.

Advanced Docket Research



With over 230 million records, Docket Alarm's cloud-native docket research platform finds what other services can't. Coverage includes Federal, State, plus PTAB, TTAB, ITC and NLRB decisions, all in one place.

Identify arguments that have been successful in the past with full text, pinpoint searching. Link to case law cited within any court document via Fastcase.

Analytics At Your Fingertips



Learn what happened the last time a particular judge, opposing counsel or company faced cases similar to yours.

Advanced out-of-the-box PTAB and TTAB analytics are always at your fingertips.

API

Docket Alarm offers a powerful API (application programming interface) to developers that want to integrate case filings into their apps.

LAW FIRMS

Build custom dashboards for your attorneys and clients with live data direct from the court.

Automate many repetitive legal tasks like conflict checks, document management, and marketing.

FINANCIAL INSTITUTIONS

Litigation and bankruptcy checks for companies and debtors.

E-DISCOVERY AND LEGAL VENDORS

Sync your system to PACER to automate legal marketing.