

# United States Patent [19]

Darbee et al.

[11] Patent Number: **4,959,810**

[45] Date of Patent: **Sep. 25, 1990**

- [54] **UNIVERSAL REMOTE CONTROL DEVICE**
- [75] Inventors: **Paul V. Darbee**, Santa Ana; **Richard E. Ellis**, Garden Grove; **Louis S. Jansky**, Long Beach; **Avram S. Grossman**, Santa Ana, all of Calif.
- [73] Assignee: **Universal Electronics, Inc.**, Tustin, Calif.
- [21] Appl. No.: **127,999**
- [22] Filed: **Dec. 2, 1987**

4,769,643	9/1988	Sogame	340/825.69
4,771,283	9/1988	Imoto	455/603
4,774,511	9/1988	Rumbott et al.	340/825.69
4,794,371	12/1988	Yamamoto	340/825.69
4,807,052	2/1989	Amano	455/355
4,825,200	4/1989	Evans et al.	341/23
4,841,368	6/1989	Rumbolt et al.	455/352
4,855,746	8/1989	Stacy	358/194.1
4,856,081	8/1989	Smith	455/151
4,860,380	8/1989	Mengel	455/185
4,866,434	9/1989	Keenan	340/825.69

*Primary Examiner*—Andrew J. James  
*Assistant Examiner*—Viet Q. Nguyen  
*Attorney, Agent, or Firm*—Thomas R. Vigil

### Related U.S. Application Data

- [63] Continuation-in-part of Ser. No. 109,336, Oct. 14, 1987, abandoned.
- [51] Int. Cl.<sup>3</sup> ..... **H04B 9/00; G08C 19/00; H04Q 1/00**
- [52] U.S. Cl. .... **364/900; 340/825.69; 340/825.57; 340/825.72; 455/151; 455/603; 455/352**
- [58] Field of Search ..... **364/900; 455/355, 151, 455/603; 340/825.69**

### References Cited

#### U.S. PATENT DOCUMENTS

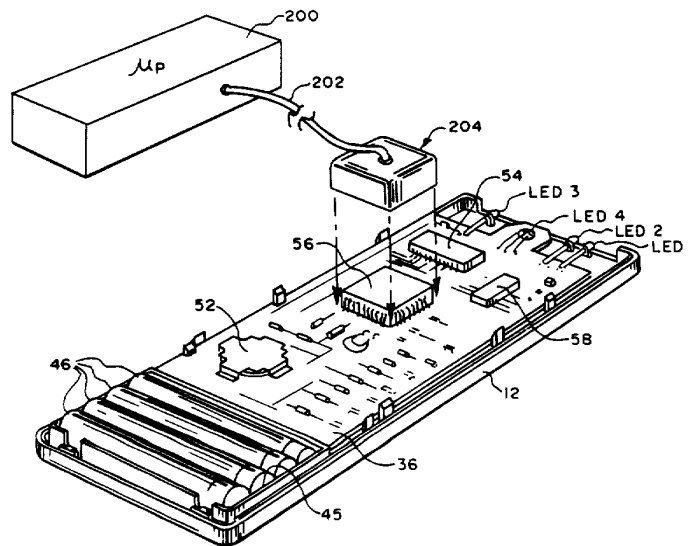
3,956,745	5/1976	Ellis	340/337
4,200,862	4/1980	Campbell et al.	340/310
4,356,509	10/1982	Skerlos et al.	358/85
4,386,436	5/1983	Kocher et al.	455/151
4,425,647	1/1984	Collins et al.	371/70
4,509,211	4/1985	Robbins	455/603
4,517,564	5/1985	Morishita et al.	340/825.69
4,535,333	8/1985	Twardowski	455/151
4,566,034	1/1986	Harger et al.	455/151
4,623,887	11/1986	Welles, II	340/825.57
4,626,847	12/1986	Zato	340/825.56
4,626,848	12/1986	Ehlers	340/825.69
4,703,359	10/1987	Rumbolt et al.	358/194.1
4,712,105	12/1987	Kohler	340/825.69
4,718,112	1/1988	Shiroda	455/151
4,746,919	5/1988	Reitmeier	340/825.56

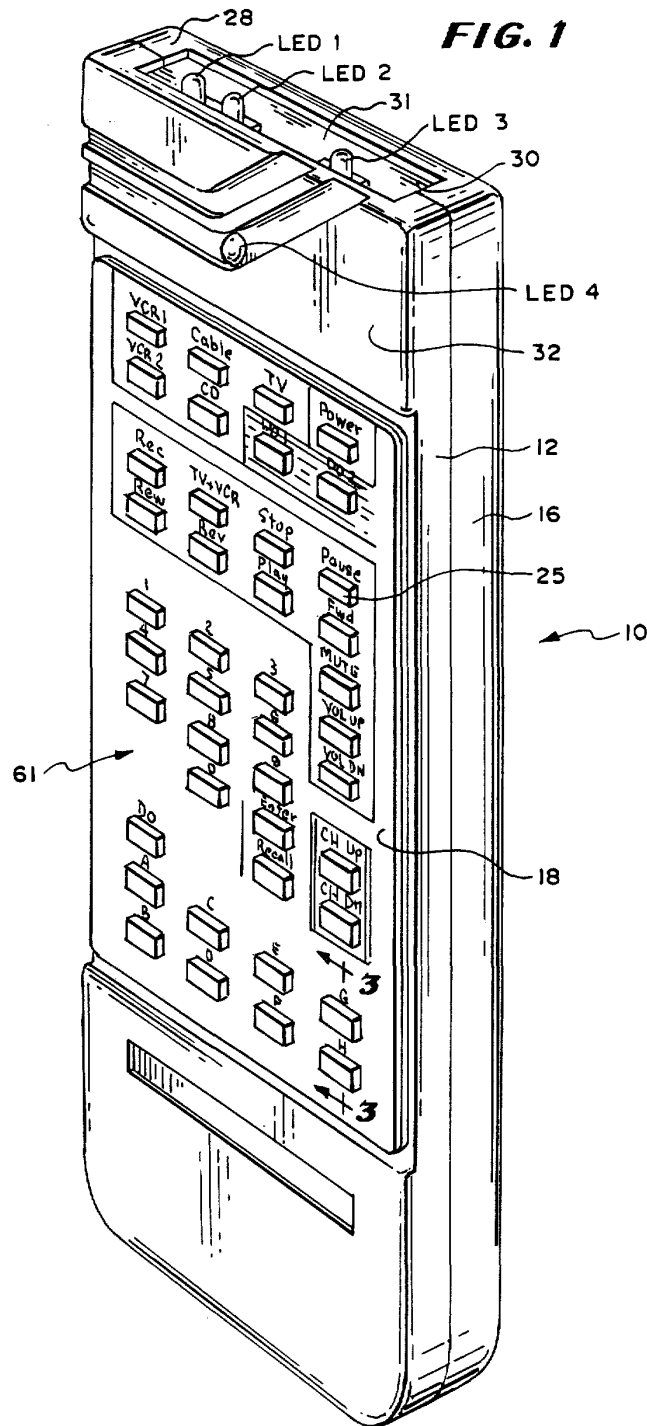
### [57] ABSTRACT

The universal remote control system comprises data processor, input device including a keyboard and a keyboard circuit connected to the data processor, signal output device including circuitry for generating infrared light codes connected to the data processor means, a memory including a battery backed, non-volatile RAM only and no ROM for storing (a) a set of instructions and (b) a library of code data for enabling the infrared light generating circuitry to generate specific infrared codes, the RAM being coupled to the data processor, and a data coupling device including terminals coupled to the CPU for enabling new code data to be supplied from outside the system to, or retrieved from, the RAM through the terminals and the CPU.

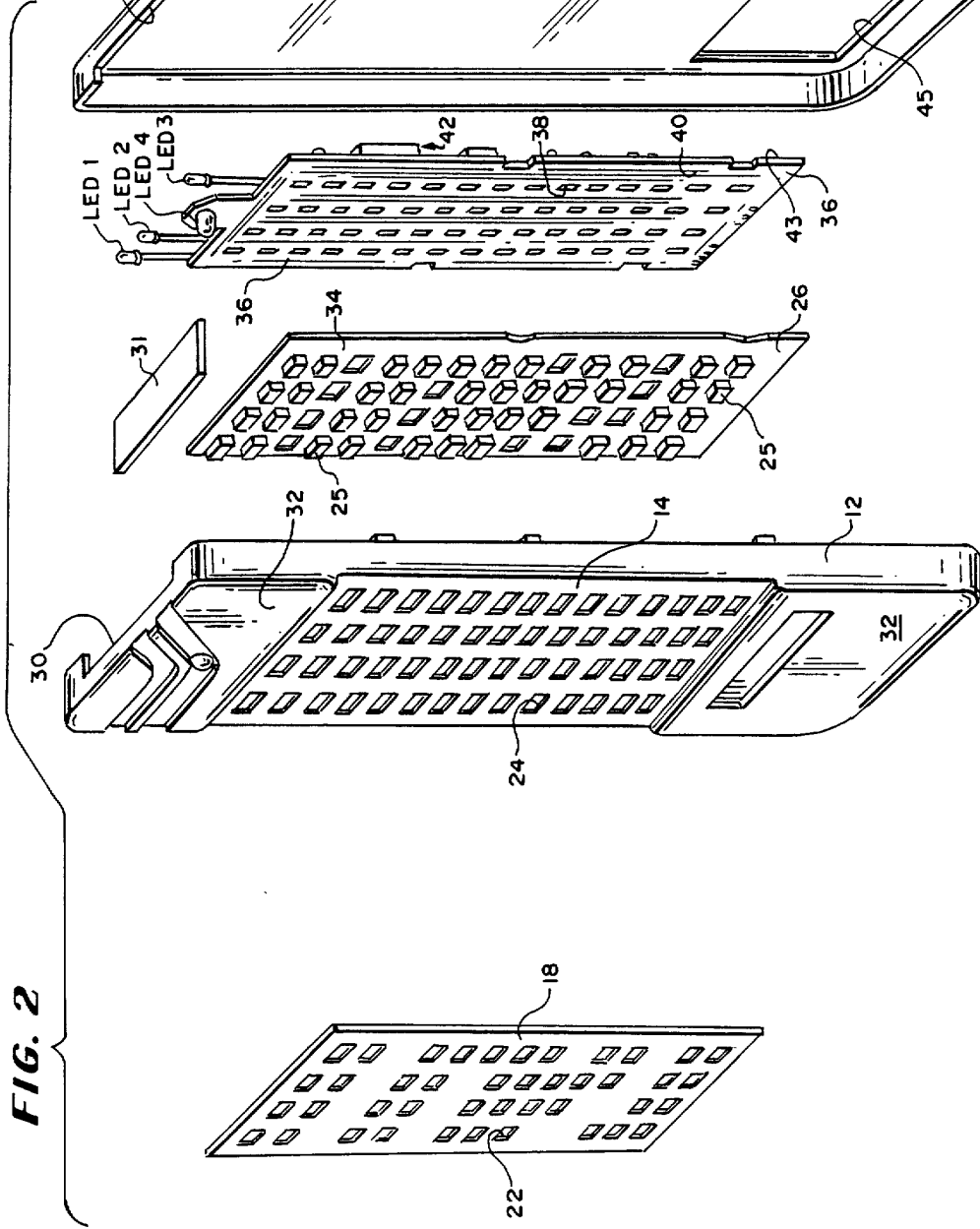
The RAM in the ROM-less data processing means is loaded by carrying out the following steps: (a) disabling the central processing unit; (b) connecting a separate microprocessor system to said RAM; (c) transferring instructions and/or data to said RAM; and (d) re-enabling the central processing unit to enable the central processing unit to execute the instructions so transferred.

**38 Claims, 17 Drawing Sheets**

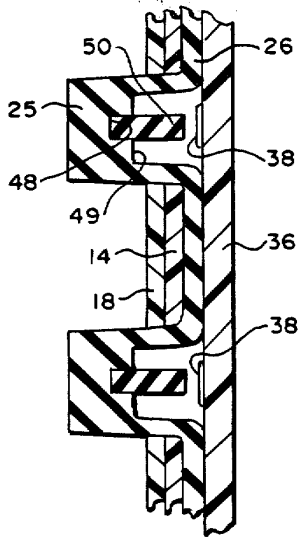




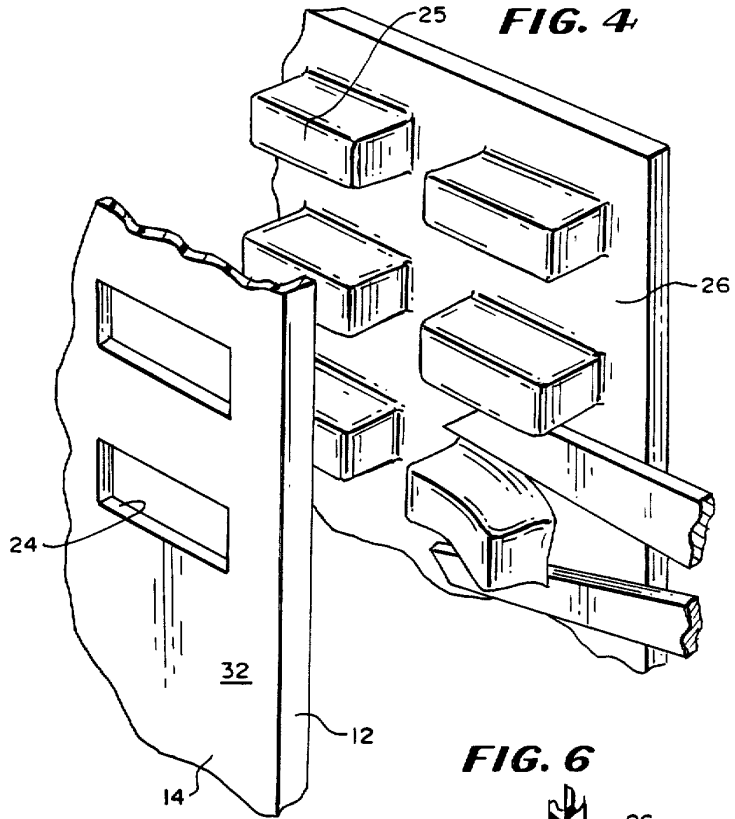
**FIG. 2**



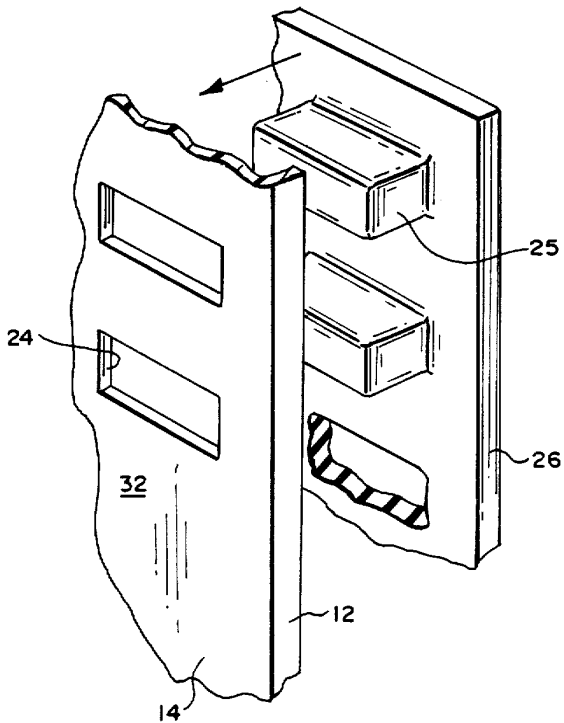
**FIG. 3**



**FIG. 4**



**FIG. 5**



**FIG. 6**

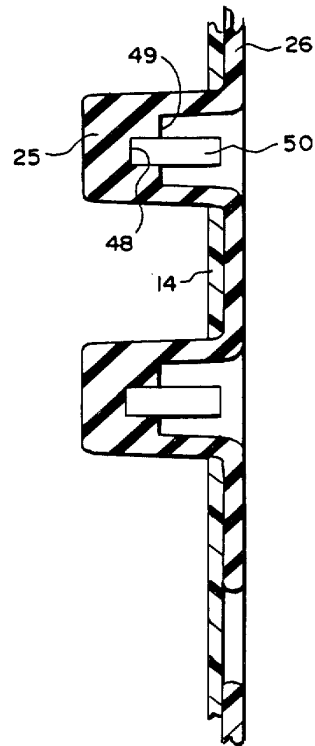
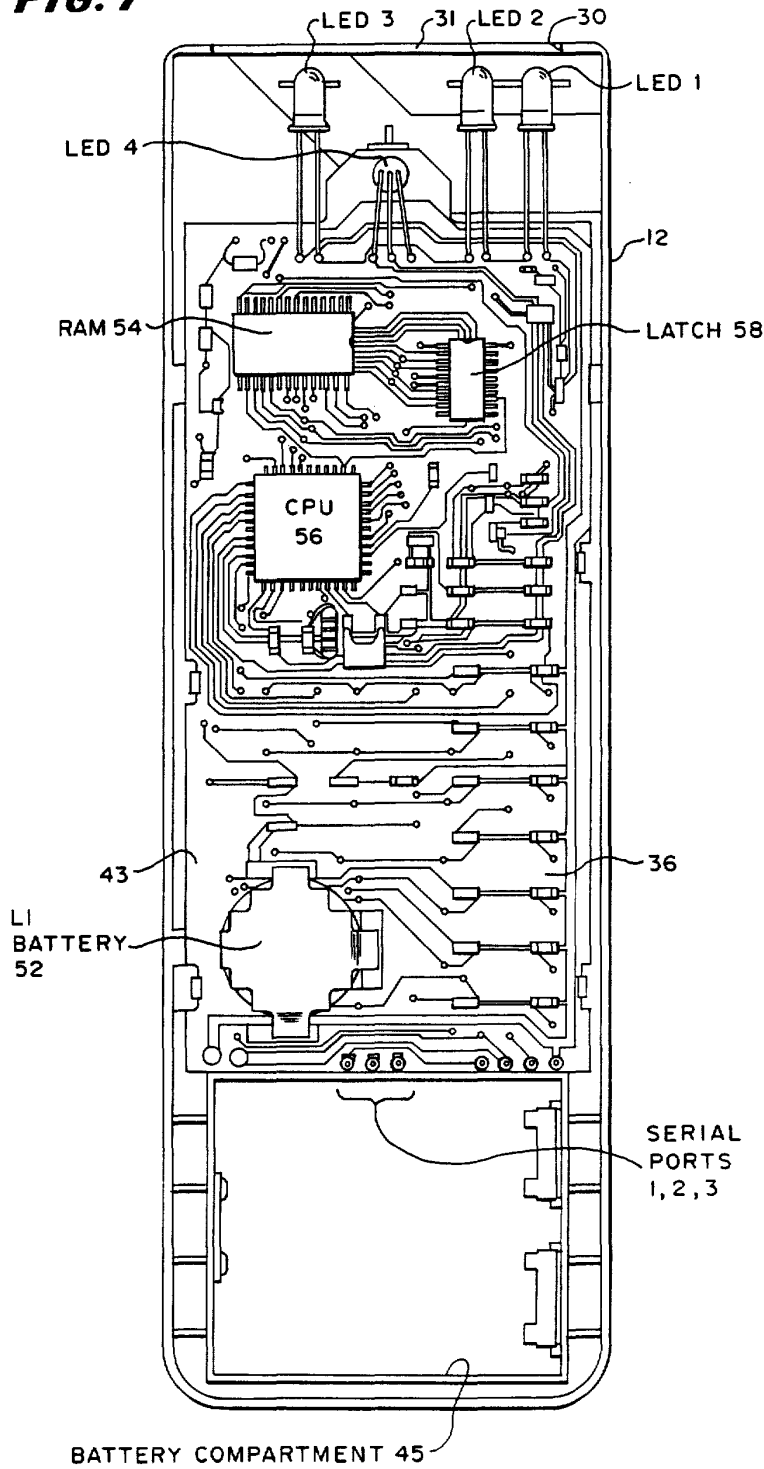


FIG. 7



# Explore Litigation Insights

Docket Alarm provides insights to develop a more informed litigation strategy and the peace of mind of knowing you're on top of things.

## Real-Time Litigation Alerts



Keep your litigation team up-to-date with **real-time alerts** and advanced team management tools built for the enterprise, all while greatly reducing PACER spend.

Our comprehensive service means we can handle Federal, State, and Administrative courts across the country.

## Advanced Docket Research



With over 230 million records, Docket Alarm's cloud-native docket research platform finds what other services can't. Coverage includes Federal, State, plus PTAB, TTAB, ITC and NLRB decisions, all in one place.

Identify arguments that have been successful in the past with full text, pinpoint searching. Link to case law cited within any court document via Fastcase.

## Analytics At Your Fingertips



Learn what happened the last time a particular judge, opposing counsel or company faced cases similar to yours.

Advanced out-of-the-box PTAB and TTAB analytics are always at your fingertips.

## API

Docket Alarm offers a powerful API (application programming interface) to developers that want to integrate case filings into their apps.

## LAW FIRMS

Build custom dashboards for your attorneys and clients with live data direct from the court.

Automate many repetitive legal tasks like conflict checks, document management, and marketing.

## FINANCIAL INSTITUTIONS

Litigation and bankruptcy checks for companies and debtors.

## E-DISCOVERY AND LEGAL VENDORS

Sync your system to PACER to automate legal marketing.