

UEI's Infringement Contentions and Asserted Claims Regarding Infringement of U.S. Patent No. 5,414,761 By Logitech, Inc., Logitech International S.A., and Logitech Europe S.A.

‘761 Patent Claim	Logitech’s Accused Systems, Products and/or Services
<p>Claim 1</p> <p>1. A remote control system with data coupling including:</p>	<p>Logitech’s manufacture, sale, offer for sale, and use in the United States and importation into the United States of certain remote controls and related technology, including but not limited to the following accused systems, products and services: Harmony H300, H650, H700, H900, One, and H1100 remote controls, associated software and hardware, programming and data available on cd, Logitech’s website and/or from Logitech’s database, and any similar products and related technology, constitutes infringement of at least Claims 1, 9, 10, 11, and 14 of the ‘761 Patent under 35 U.S.C. § 271 (a), (b), and (c).</p> <p>More specifically, Logitech infringes Claims 1, 9, 10, 11, and 14 of the ‘761 Patent under § 271 (a) through its manufacture, importation, use, operation, configuration, control, and testing of its Harmony H300, H650, H700, H900, One, and H1100 remote controls, associated software and hardware, programming and data available on cd, Logitech’s website and/or from Logitech’s database, and any similar products and related technology.</p> <p>Logitech also infringes Claims 1, 9, 10, 11, and 14 of the ‘761 Patent under § 271 (b) and (c) through its sale and offer to sell in the United States, Harmony H300, H650, H700, H900, One, and H1100 remote controls, to customers or users along with instructions and associated software and hardware, programming and data for use, activation, set-up, and operation of its Harmony H300, H650, H700, H900, One, and H1100 remote controls. Logitech’s actions constitute active inducement of infringement of Claims 1, 9, 10, 11, and 14 of the ‘761 Patent by these users and also constitute contributory infringement insofar as Logitech offers to sell and sells within the United States, and/or imports into the United States, a component of a patented machine, manufacture, combination, or composition, or a material or apparatus for use in practicing a patented process claimed in Claims 1, 9, 10, 11, and 14 of the ‘761 Patent, which constitutes a material part of the claimed process, knowing the same to be especially made or especially adapted for use in an infringement of Claims 1, 9, 10, 11, and 14 of the ‘761 Patent, and not a staple article or commodity of commerce suitable for substantial noninfringing use. Such instructions and associated software, programming and data include guides, manuals and applications on how to use, activate, set-up, and operate the Harmony H300, H650, H700, H900, One, and H1100 remote controls, that is provided with the remote controls in written form or on a cd or other medium, and any guides, instructions and associated software, programming and data available online on Logitech’s website at www.logitech.com. In turn, the users of the Harmony H300, H650, H700, H900, One, and</p>

UEI's Infringement Contentions and Asserted Claims Regarding Infringement of U.S. Patent No. 5,414,761 By Logitech, Inc., Logitech International S.A., and Logitech Europe S.A.

'761 Patent Claim	Logitech's Accused Systems, Products and/or Services
Claim 1	<p>H1100 remote controls who use, activate, set-up, and operate such infringing technology, infringe Claims 1, 9, 10, 11, and 14 of the '761 Patent under § 271 (a).</p> <p style="text-align: center;"><u>Logitech Harmony 300 Universal Remote</u></p> <p>“Logitech® Harmony® 300 Remote.” (H300 Quick-start Guide, UE015160.) The Harmony 300 makes it easy to sit back and enjoy better control of your entertainment devices.” (H300 Quick-start Guide, UE015166.)</p> <p>“Simple online setup. Just connect your remote to your computer. Find your devices from a simple software menu. Download a full set of commands into your remote. No more codes you can't find. No more buttons that don't work.” (H300 Packaging, UE015159.)</p> <p style="text-align: center;"><u>Logitech Harmony 650 Universal Remote</u></p> <p>“The Harmony 650 is an Activity-based infrared (IR) universal remote control” (H650 User Manual, p. 4, UE015344.)</p> <p>“Works with 5000+ brands Our online library includes more than 225,000 devices—and the list grows every day. So your remote is never out of date.” (H650 Packaging, UE015138.)</p>

UEI's Infringement Contentions and Asserted Claims Regarding Infringement of U.S. Patent No. 5,414,761 By Logitech, Inc., Logitech International S.A., and Logitech Europe S.A.

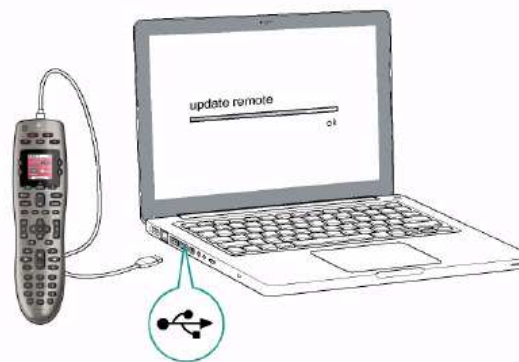
'761 Patent Claim	Logitech's Accused Systems, Products and/or Services
--------------------------	---

Claim 1

2. Connecting your Harmony 650 to your computer

To connect your Harmony 650 to your PC, use the USB cable provided.

1. Connect the smaller end of the cable to the USB port on your remote.
2. Connect the wider end of the USB cable to a USB port on your computer.
3. On the Check Connection page, the software confirms that the Harmony 650 is communicating with your computer.



(H650 User Manual, p. 12, UE015352.)

Logitech Harmony 700 Universal Remote

“The Harmony 700 is an Activity-based infrared (IR) universal remote control.” (H700 User Manual, p. 1, UE015381.)

“**Yes it works with your system** How can you be sure? Harmony already supports more than 5,000 brands and 225,000 devices. And with more added every day, you’ll be covered tomorrow, too.” (H700 Packaging, UE015085.)

UEI's Infringement Contentions and Asserted Claims Regarding Infringement of U.S. Patent No. 5,414,761 By Logitech, Inc., Logitech International S.A., and Logitech Europe S.A.

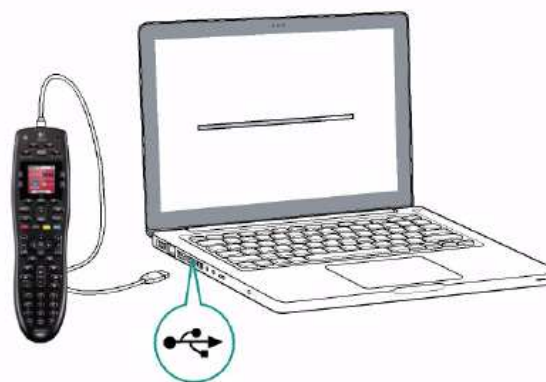
'761 Patent Claim	Logitech's Accused Systems, Products and/or Services
-------------------	--

Claim 1

2. Connecting your Harmony 700 to your computer

When asked to do so, connect your Harmony 700 to your computer using the USB cable provided.

1. Connect the smaller end of the cable to the USB port on your remote.
2. Connect the wider end of the USB cable to a USB port on your computer.
3. Once connected, the Harmony 700 will begin communicating with your computer. A Welcome screen will appear when the connection is complete.



(H700 User Manual, p. 8, UE015388.)

Logitech Harmony 900 Universal Remote

“The Harmony 900 is an Activity-based universal remote control.” (H900 User Manual, p. 6.)

“It’s possible that a device’s commands may not be recognized. Maybe you have a very rare device? Or a new one? Although we update our device list regularly, there are always new devices in the market. To remedy this, you can teach your Harmony how to control this device by using the device’s original remote.” (H900 User Manual, p. 35, UE054467.)

UEI's Infringement Contentions and Asserted Claims Regarding Infringement of U.S. Patent No. 5,414,761 By Logitech, Inc., Logitech International S.A., and Logitech Europe S.A.

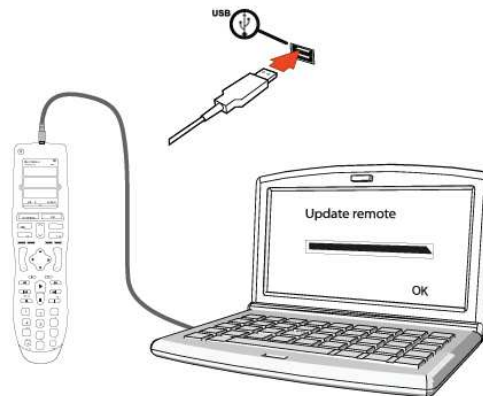
'761 Patent Claim	Logitech's Accused Systems, Products and/or Services
-------------------	--

Claim 1

Connecting your Harmony 900

To connect your Harmony 900 to your computer, use the USB cable provided.

1. Remove your Harmony 900 from the charging station.
2. Connect the smaller end of the cable to the USB port on your remote.
3. Connect the wider end of the USB cable to a USB port on your computer.



(H900 User Manual, p. 13, UE054445.)

13

Logitech Harmony One Universal Remote

“The Harmony One is an Activity-based infrared (IR) universal remote control.” (One User Manual, p. 4, UE015456.)

“**From Betamax to Blu-ray™ and beyond** Harmony already works with more than 5,000 brands and 225,000 devices. And our library of home entertainment devices grows every day. So, you can be sure your remote will work with what you own today and what you add tomorrow.” (One Packaging, UE015180.)

Explore Litigation Insights

Docket Alarm provides insights to develop a more informed litigation strategy and the peace of mind of knowing you're on top of things.

Real-Time Litigation Alerts



Keep your litigation team up-to-date with **real-time alerts** and advanced team management tools built for the enterprise, all while greatly reducing PACER spend.

Our comprehensive service means we can handle Federal, State, and Administrative courts across the country.

Advanced Docket Research



With over 230 million records, Docket Alarm's cloud-native docket research platform finds what other services can't. Coverage includes Federal, State, plus PTAB, TTAB, ITC and NLRB decisions, all in one place.

Identify arguments that have been successful in the past with full text, pinpoint searching. Link to case law cited within any court document via Fastcase.

Analytics At Your Fingertips



Learn what happened the last time a particular judge, opposing counsel or company faced cases similar to yours.

Advanced out-of-the-box PTAB and TTAB analytics are always at your fingertips.

API

Docket Alarm offers a powerful API (application programming interface) to developers that want to integrate case filings into their apps.

LAW FIRMS

Build custom dashboards for your attorneys and clients with live data direct from the court.

Automate many repetitive legal tasks like conflict checks, document management, and marketing.

FINANCIAL INSTITUTIONS

Litigation and bankruptcy checks for companies and debtors.

E-DISCOVERY AND LEGAL VENDORS

Sync your system to PACER to automate legal marketing.