

Wireline Setting Equipment

for Alpha's bridge plugs, frac plugs & cement retainers

The information contained herein, is the property of Alpha Oil Tools, and is confidential. It may not be reproduced in any form without the written consent of an officer of Alpha Oil Tools. This information is subject to change without notice and does not represent a commitment on the part of Alpha Oil Tools and its representatives.

These recommendations are made by Alpha Oil Tools for the benefit of all parties knowledge and understanding of the proper way to use this product and achieve the best performance.

Copyright © 1996 - 2005 Alpha Oil Tools. All rights reserved.

Alpha Oil Tools / 3044 Wichita Court / Fort Worth, TX / 76140 USA

Voice: 817-293-5192
 Fax: 817-293-9076

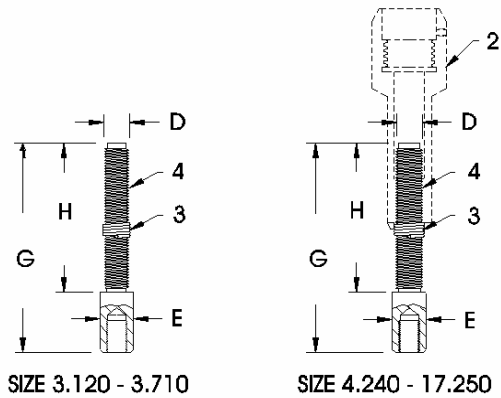
World Wide Web: <http://www.alphaoiltools.com>

Email:
 Sales: sales@alphaoiltools.com
 Field Support: support@alphaoiltools.com
 Purchasing: purchaser@alphaoiltools.com

Business Manager: sysop@alphaoiltools.com
 Engineering: engineering@alphaoiltools.com
 Accounting: account@alphaoiltools.com

**Big Boy Bridge Plug, Midget 1 Bridge Plug, Midget 2 Bridge Plug
 on Baker Wireline Pressure Setting Tool**

TENSION MANDRELS & LOCK SPRINGS



SETTING SLEEVES

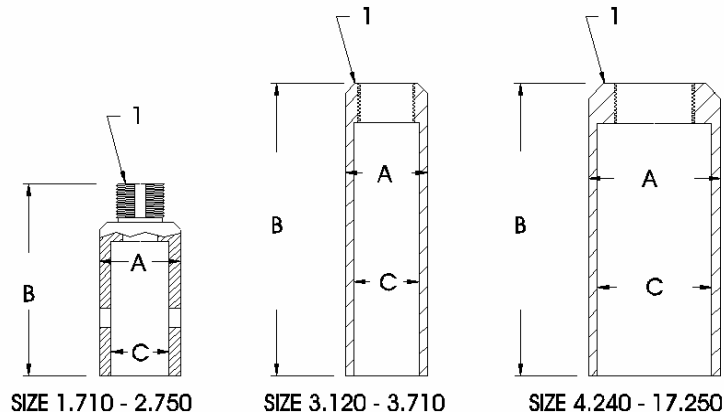


Figure 1

DIMENSIONAL DATA

REFER TO FIGURE 1

DIM.	1.71	2.10	2.50	2.75	3.12	3.50/ 3.71	4.24/ 4.75	5.34/ 5.61	6.09	6.96	7.71	8.71	9.50	11.56	12.00	14.25	17.25	
A	1.710	2.100	2.500	2.750	3.120	3.500	4.240	5.250	6.090	6.960	7.710	8.710	9.500	11.560	12.000	14.250	17.250	
B	5.000				14.125	10.500	16.250	15.000								17.250	15.000	
C	1.250	1.750		2.625	3.000	3.750	4.750	5.500	6.500	7.125	8.125	9.000	10.500	11.250	13.250	15.250		
D	not applicable					1.000		1.125										
E	not applicable					1.250	1.375	1.750										
G	not applicable					5.000	4.625	5.187	5.250									
H	not applicable					3.000	3.062	3.500										

The number given for "C" can change due to materials available at the time of manufacture. This is given as nominal and in some cases max. diameter.

PARTS LIST

REFER TO FIGURE 1

			SIZE						
ITEM	DESCRIPTION	QTY	1.71	2.10	2.50	2.75	3.12	3.50/3.71	
	Complete Adapter Kit	-	000-1710-900	000-2100-900	000-2500-900	000-2750-900	000-3120-900	000-3500-900	
1	Setting Sleeve	1	000-1710-200	000-2100-200	000-2500-200	000-2750-200	000-3120-200	000-3500-200	
2	Adjuster Sub	1	not required						
-	Socket Head Set Screw	1	not required						
3	Lock Spring	1	not required					000-3500-203	
4	Tension Mandrel	1	not required					000-3120-206	000-3500-206

PARTS LIST - continued

REFER TO FIGURE 1

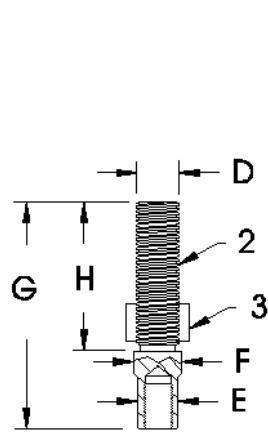
			SIZE					
ITEM	DESCRIPTION	QTY	4.24/4.75	5.34/5.61	6.09	6.96	7.71	8.71
	Complete Adapter Kit	-	000-4240-900	000-5610-900	000-6090-900	000-6960-900	000-7710-900	000-8710-900
1	Setting Sleeve	1	000-4240-200	000-5610-200	000-6090-200	000-6960-200	000-7710-200	000-8710-200
2	Adjuster Sub	1	000-4240-209					
-	Socket Head Set Screw	1	5/16 - 18 x 3/8 lg					
3	Lock Spring	1	000-4240-203					
4	Tension Mandrel	1	000-4240-206					

PARTS LIST - continued

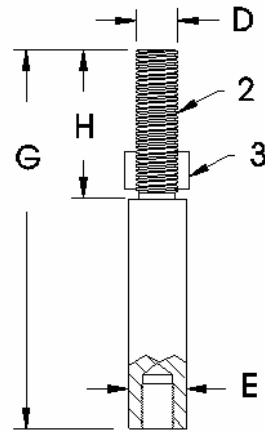
REFER TO FIGURE 1

			SIZE					
ITEM	DESCRIPTION	QTY	9.50	11.56	12.00	14.25	17.25	
	Complete Adapter Kit	-	000-9500-900	000-1156-900	000-1200-900	000-1425-900	000-1725-900	
1	Setting Sleeve	1	000-9500-200	000-1156-200	000-1200-200	000-1425-200	000-1725-200	
2	Adjuster Sub	1	000-4240-209					
-	Socket Head Set Screw	1	5/16 - 18 x 3/8 lg					
3	Lock Spring	1	000-4240-203					
4	Tension Mandrel	1	000-5610-206					

ADAPTER RODS & LOCK NUTS

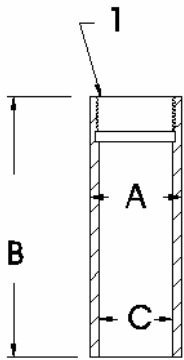


SIZE 3.500 - 4.750

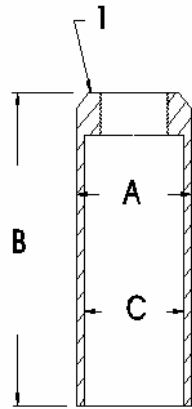


SIZE 5.340 - 17.250

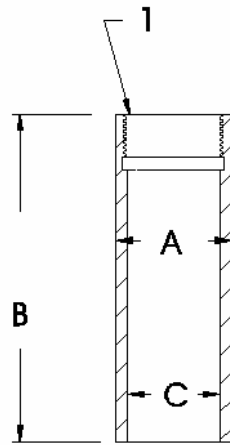
SETTING SLEEVES



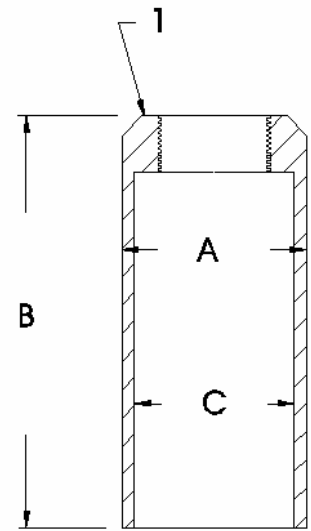
SIZE 1.710 - 2.750



SIZE 3.120



SIZE 3.500 - 3.710



SIZE 4.240 - 17.250

Figure 2

**DIMENSIONAL DATA
REFER TO FIGURE 2**

DIM.	1.71	1 11/16 2.10	2 1/8 2.10	1 11/16 2.50	2 1/8 2.50	1 11/16 2.75	2 1/8 2.75	3.12	3.50/ 3.71	4.24/ 4.75	5.34/ 5.61	6.09	6.96	7.71	8.71	9.50	11.56	12.00	17.25		
A	1.710	2.000	2.100	2.500	2.500	2.750	2.750	3.120	3.500	4.240	5.250	6.090	6.960	7.710	8.710	9.500	11.560	12.000	17.250		
B	7.343							8.281	8.812	9.250	14.250										
C	1.437	1.500	1.750				2.125	3.000	3.750	4.750	5.500	6.500	7.125	8.125	9.000	10.500	11.250	15.250			
D	not applicable										1.375										
E	not applicable										1.250	1.750									
F	not applicable										1.500	not applicable									
G	not applicable										6.562	13.375									
H	not applicable										3.500	4.000									

The number given for "C" can change due to materials available at the time of manufacture. This is given as nominal and in some cases max. diameter.

**PARTS LIST
REFER TO FIGURE 2**

ITEM	DESCRIPTION	QTY	SIZE					
			1.71	2.10 (1 11/16)	2.10 (2 1/8)	2.50 (1 11/16)	2.50 (2 1/8)	2.75 (1 11/16)
1	Setting Sleeve	1	000-1710-101	000-2100-101	000-2100-102	000-2500-101	000-2500-102	000-2750-101
2	Adapter Rod	-	not required					
3	Lock Nut	-	not required					

**PARTS LIST - continued
REFER TO FIGURE 2**

ITEM	DESCRIPTION	QTY	SIZE					
			2.75 (2 1/8)	3.12	3.50/3.71	4.24/4.75	5.34/5.61	6.09
1	Setting Sleeve	1	000-2750-102	000-3120-100	000-3500-100	000-4240-100	000-5610-100	000-6090-100
2	Adapter Rod	1	not required		000-3500-106		000-5610-106	
3	Lock Nut	1	not required		000-3500-107			

**PARTS LIST - continued
REFER TO FIGURE 2**

ITEM	DESCRIPTION	QTY	SIZE					
			6.96	7.71	8.71	9.50	11.56	12.00
1	Setting Sleeve	1	000-6960-100	000-7710-100	000-8710-100	000-9500-100	000-1156-100	000-1200-100
2	Adapter Rod	1	000-5610-106					
3	Lock Nut	1	000-3500-107					

**PARTS LIST - continued
REFER TO FIGURE 2**

ITEM	DESCRIPTION	QTY	SIZE					
			14.25	17.25				
1	Setting Sleeve	1	000-1425-100	000-1725-100				
2	Adapter Rod	1	000-5610-106					

SETTING SLEEVES

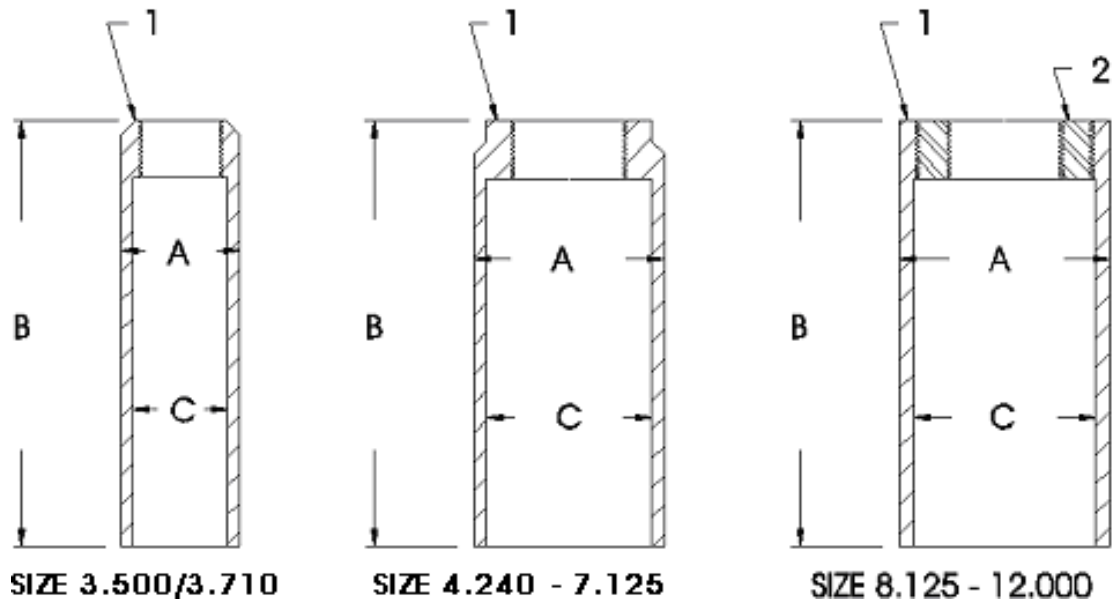


Figure 2A

Explore Litigation Insights

Docket Alarm provides insights to develop a more informed litigation strategy and the peace of mind of knowing you're on top of things.

Real-Time Litigation Alerts



Keep your litigation team up-to-date with **real-time alerts** and advanced team management tools built for the enterprise, all while greatly reducing PACER spend.

Our comprehensive service means we can handle Federal, State, and Administrative courts across the country.

Advanced Docket Research



With over 230 million records, Docket Alarm's cloud-native docket research platform finds what other services can't. Coverage includes Federal, State, plus PTAB, TTAB, ITC and NLRB decisions, all in one place.

Identify arguments that have been successful in the past with full text, pinpoint searching. Link to case law cited within any court document via Fastcase.

Analytics At Your Fingertips



Learn what happened the last time a particular judge, opposing counsel or company faced cases similar to yours.

Advanced out-of-the-box PTAB and TTAB analytics are always at your fingertips.

API

Docket Alarm offers a powerful API (application programming interface) to developers that want to integrate case filings into their apps.

LAW FIRMS

Build custom dashboards for your attorneys and clients with live data direct from the court.

Automate many repetitive legal tasks like conflict checks, document management, and marketing.

FINANCIAL INSTITUTIONS

Litigation and bankruptcy checks for companies and debtors.

E-DISCOVERY AND LEGAL VENDORS

Sync your system to PACER to automate legal marketing.