

UNITED STATES PATENT AND TRADEMARK OFFICE  
BEFORE THE PATENT TRIAL AND APPEAL BOARD

IPR2014-00818,819,821,827, and 1098  
Patent 6,853,142

**PATENT OWNER ZOND LLC'S  
DEMONSTRATIVE EXHIBIT**

## OBVIOUSNESS

Claims 1-20, 40 And 42 Are Not Obvious Over Wang  
and Lantsman

❖ Wang and Lantsman would not have taught:

“a gas line that supplies feed gas to the strongly-ionized plasma, the feed gas diffusing the strongly-ionized plasma thereby allowing additional power from the pulsed power supply to be absorbed by the strongly ionized plasma,” As Recited In Claim 1 And Similarly in Claims 10 and 40

## OBVIOUSNESS

### Claims 1-20 And 42 Are Not Obvious Over Wang Lantsman

- ❖ Lantsman makes no mention of generating a strongly ionized plasma and therefore, cannot possibly teach supplying feed gas to strongly-ionized plasma (Dr. Hartsough's Declaration, Ex 2005, ¶ 94).
- ❖ "Wang's chamber is a significantly different design than the '142 patent in that the feed gas in Wang enters by the wafer/pedestal electrode, far from the high density plasma region 42" (Dr. Hartsough's Declaration, Exhibit 2005, ¶ 94).

# OBVIOUSNESS

Claims 1-20 And 42 Are Not Obvious Over Wang  
Lantsman

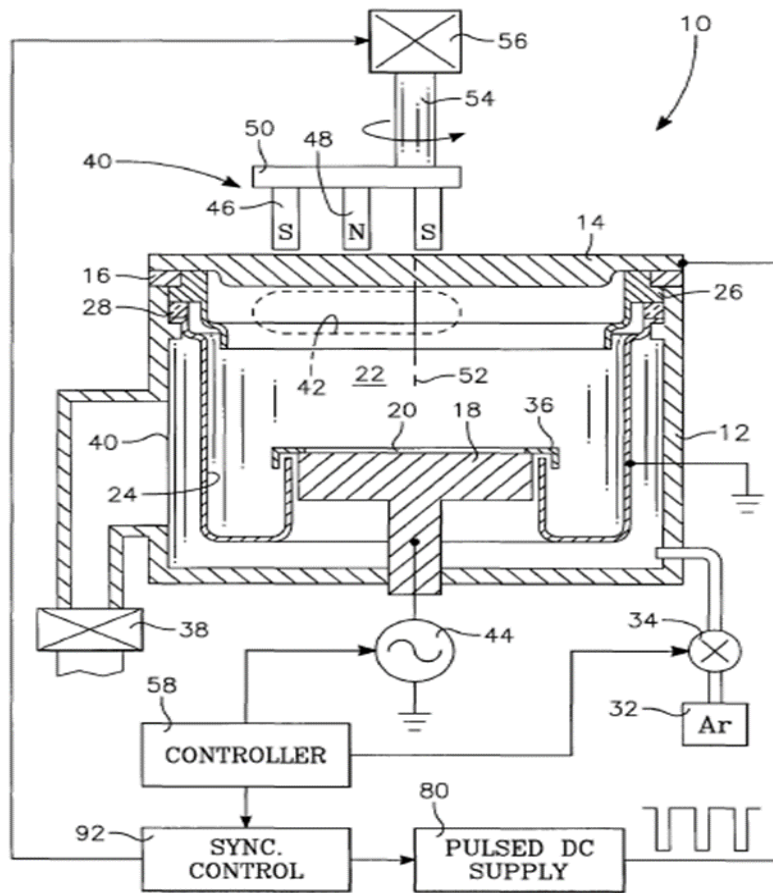


FIG. 1

## OBVIOUSNESS

### Claims 1-20 And 42 Are Not Obvious Over Wang Lantsman

- ❖ Wang, instead of teaching that the feed gas allows additional power from the pulsed power supply to be absorbed by the strongly ionized plasma as required by claims 1 and 10, discloses:

“a sputter working gas such as argon is supplied from a gas source 32 through a mass flow controller 34 to a processing region in back of the grounded shield 24. The gas flows into the processing region 22 through a gap formed between the pedestal 18, the grounded shield 24, and 10 a clamp ring or plasma focus ring 36 surrounding the periphery of the wafer 20” (col. 4, ll. 5-11)

# Explore Litigation Insights

Docket Alarm provides insights to develop a more informed litigation strategy and the peace of mind of knowing you're on top of things.

## Real-Time Litigation Alerts



Keep your litigation team up-to-date with **real-time alerts** and advanced team management tools built for the enterprise, all while greatly reducing PACER spend.

Our comprehensive service means we can handle Federal, State, and Administrative courts across the country.

## Advanced Docket Research



With over 230 million records, Docket Alarm's cloud-native docket research platform finds what other services can't. Coverage includes Federal, State, plus PTAB, TTAB, ITC and NLRB decisions, all in one place.

Identify arguments that have been successful in the past with full text, pinpoint searching. Link to case law cited within any court document via Fastcase.

## Analytics At Your Fingertips



Learn what happened the last time a particular judge, opposing counsel or company faced cases similar to yours.

Advanced out-of-the-box PTAB and TTAB analytics are always at your fingertips.

## API

Docket Alarm offers a powerful API (application programming interface) to developers that want to integrate case filings into their apps.

## LAW FIRMS

Build custom dashboards for your attorneys and clients with live data direct from the court.

Automate many repetitive legal tasks like conflict checks, document management, and marketing.

## FINANCIAL INSTITUTIONS

Litigation and bankruptcy checks for companies and debtors.

## E-DISCOVERY AND LEGAL VENDORS

Sync your system to PACER to automate legal marketing.