

(12) **United States Patent**  
**Rosenlund et al.**

(10) **Patent No.:** **US 6,738,155 B1**  
 (45) **Date of Patent:** **May 18, 2004**

(54) **SYSTEM AND METHOD OF PROVIDING PUBLISHING AND PRINTING SERVICES VIA A COMMUNICATIONS NETWORK**

(75) Inventors: **Scott R. Rosenlund**, Chaska, MN (US);  
**Joyce E. Vogt**, Waconia, MN (US);  
**Jeffrey A. Bartol**, New Hope, MN (US);  
**John H. Chase**, Stillwater, MN (US)

(73) Assignee: **Banta Corporation**, Menasha, WI (US)

(\*) Notice: Subject to any disclaimer, the term of this patent is extended or adjusted under 35 U.S.C. 154(b) by 0 days.

(21) Appl. No.: **09/364,935**

(22) Filed: **Jul. 30, 1999**

(51) **Int. Cl.<sup>7</sup>** ..... **G06F 15/00**

(52) **U.S. Cl.** ..... **358/1.15; 358/1.18**

(58) **Field of Search** ..... 358/1.1, 1.5, 1.9, 358/1.12, 1.13, 1.14, 1.15, 1.16, 1.17, 1.18; 707/9, 10, 100, 104

(56) **References Cited**

**U.S. PATENT DOCUMENTS**

6,247,011 B1 \* 6/2001 Jecha et al. .... 707/9  
 6,321,231 B1 \* 11/2001 Jebens et al. .... 707/104

6,384,932 B1 \* 5/2002 Fujisawa et al. .... 358/1.18

\* cited by examiner

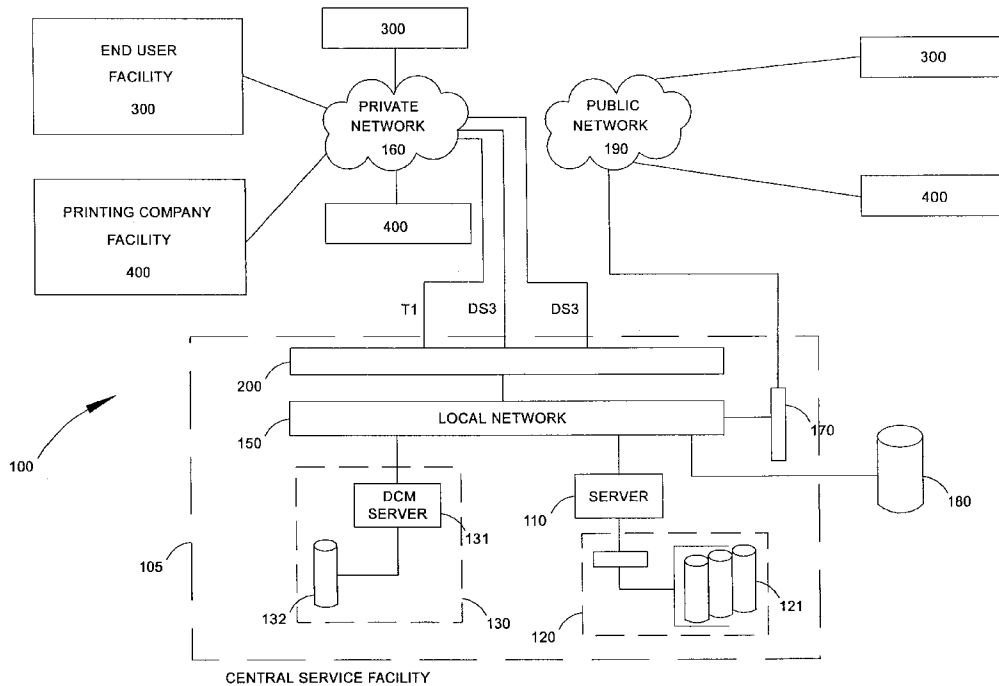
*Primary Examiner*—Mark Wallerson

(74) *Attorney, Agent, or Firm*—Foley & Lardner LLP

(57) **ABSTRACT**

A printing and publishing system providing prepress, content management, infrastructure, and workflow services to system subscribers in real time using a communication network is disclosed herein. The printing and publishing system includes a central service facility and an end-user facility and/or a printing company facility. The end user facility provides page building operations allowing the design and construction of pages from images, text, and data available via said communication network. The printing company facility provides imposition operations allowing the setting of pages on a particular plate as well as positioning and orientation of pages on said plate. The central service facility provides storage, file processing, remote access, and content management operations. Content management operations include the capture, organization, archival, retrieval, and reuse of electronic files containing any one of text, graphics, photos, artwork, full pages, audio, video, and completed projects. Content management operations further include the organization and cataloging of file content for browsing, searching, and retrieving of files and data.

**20 Claims, 19 Drawing Sheets**





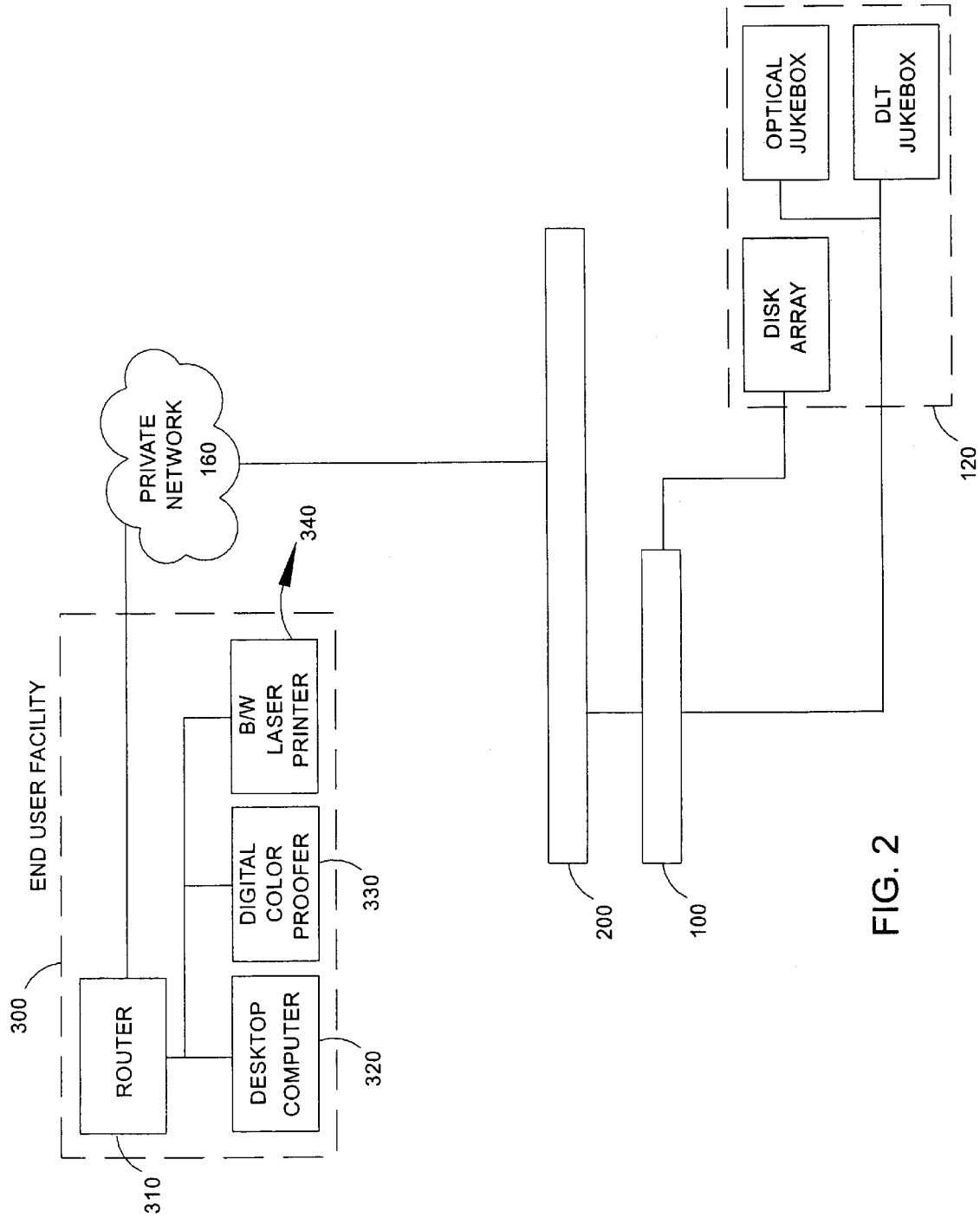


FIG. 2

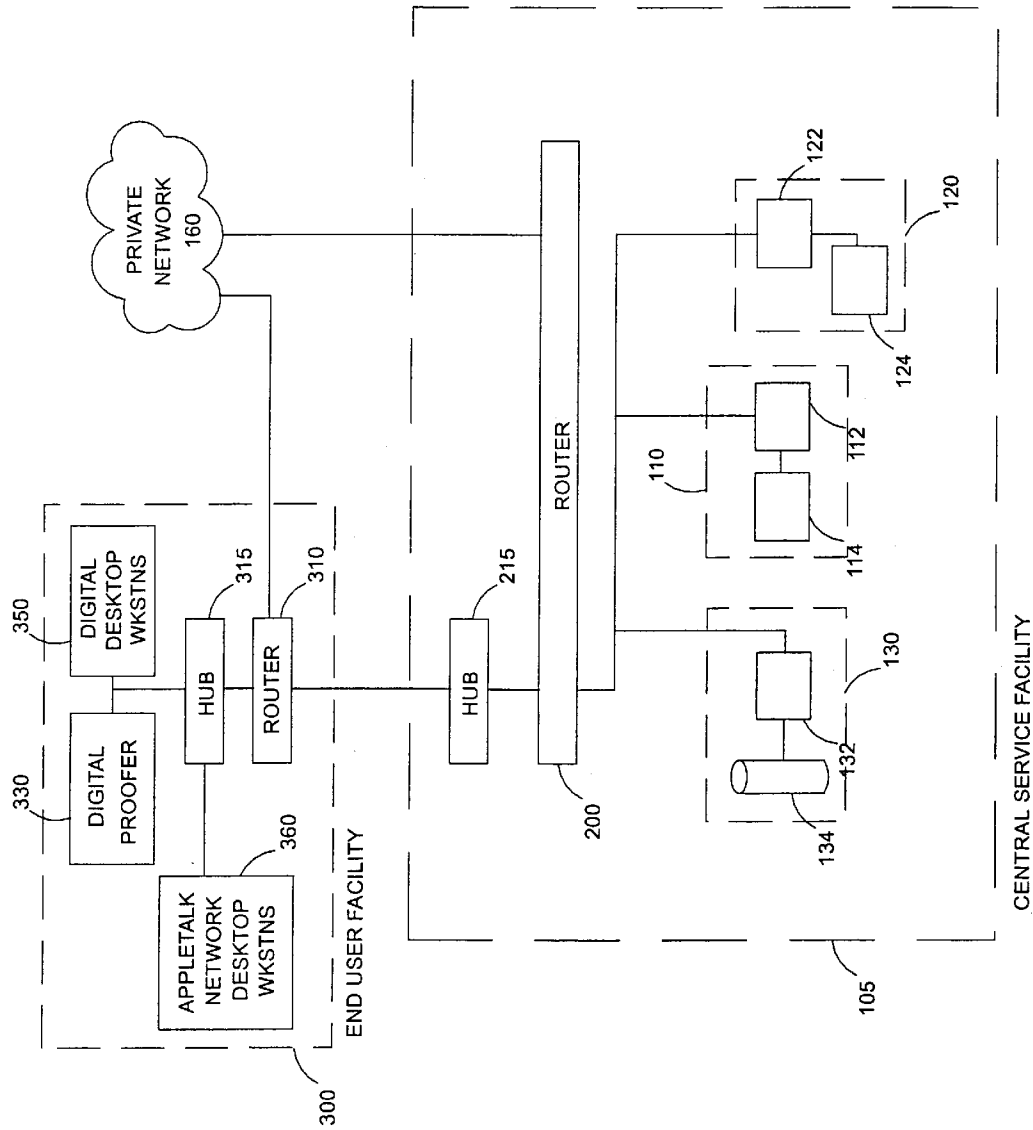


FIG. 3

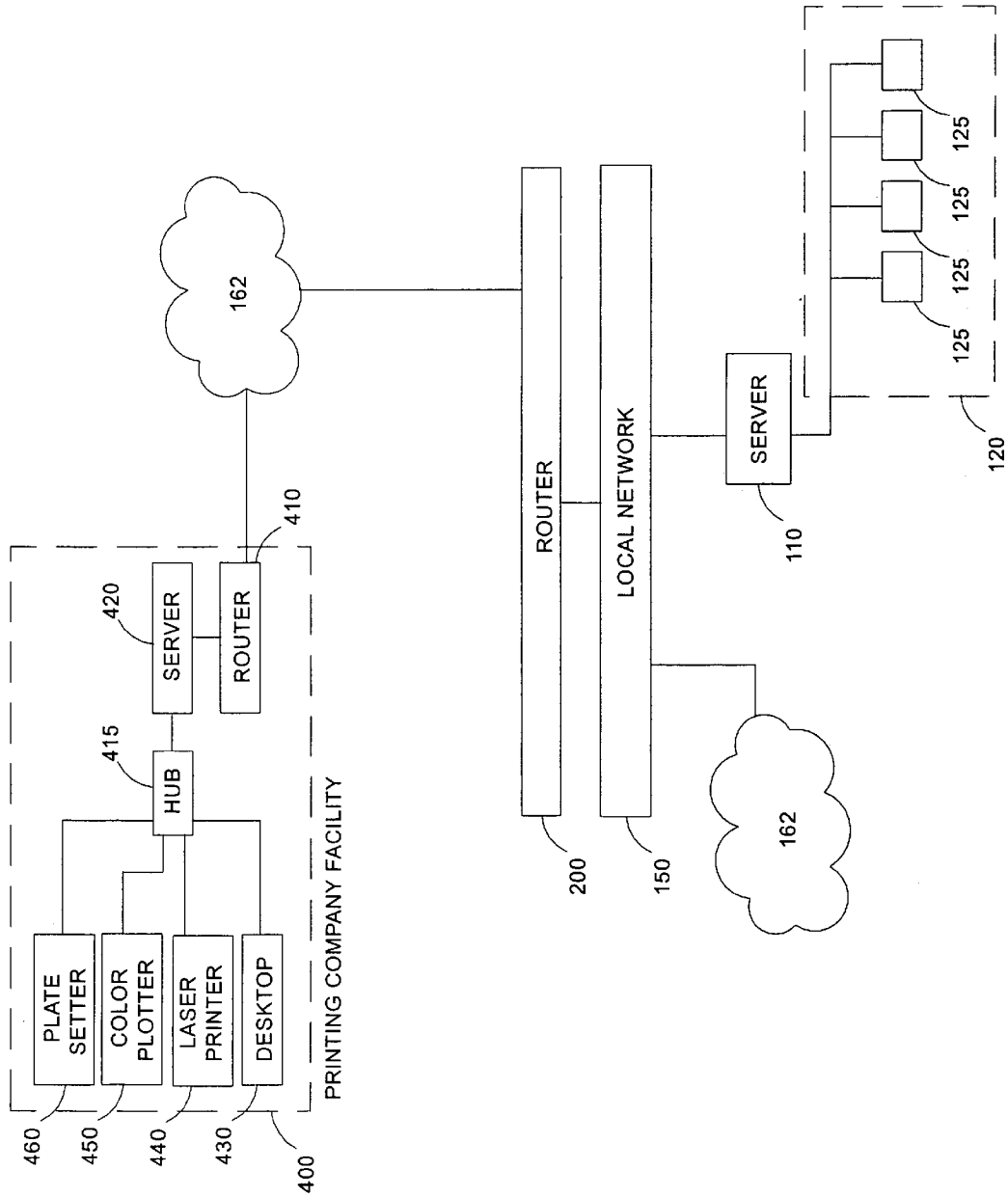


FIG. 4

# Explore Litigation Insights

Docket Alarm provides insights to develop a more informed litigation strategy and the peace of mind of knowing you're on top of things.

## Real-Time Litigation Alerts



Keep your litigation team up-to-date with **real-time alerts** and advanced team management tools built for the enterprise, all while greatly reducing PACER spend.

Our comprehensive service means we can handle Federal, State, and Administrative courts across the country.

## Advanced Docket Research



With over 230 million records, Docket Alarm's cloud-native docket research platform finds what other services can't. Coverage includes Federal, State, plus PTAB, TTAB, ITC and NLRB decisions, all in one place.

Identify arguments that have been successful in the past with full text, pinpoint searching. Link to case law cited within any court document via Fastcase.

## Analytics At Your Fingertips



Learn what happened the last time a particular judge, opposing counsel or company faced cases similar to yours.

Advanced out-of-the-box PTAB and TTAB analytics are always at your fingertips.

## API

Docket Alarm offers a powerful API (application programming interface) to developers that want to integrate case filings into their apps.

## LAW FIRMS

Build custom dashboards for your attorneys and clients with live data direct from the court.

Automate many repetitive legal tasks like conflict checks, document management, and marketing.

## FINANCIAL INSTITUTIONS

Litigation and bankruptcy checks for companies and debtors.

## E-DISCOVERY AND LEGAL VENDORS

Sync your system to PACER to automate legal marketing.