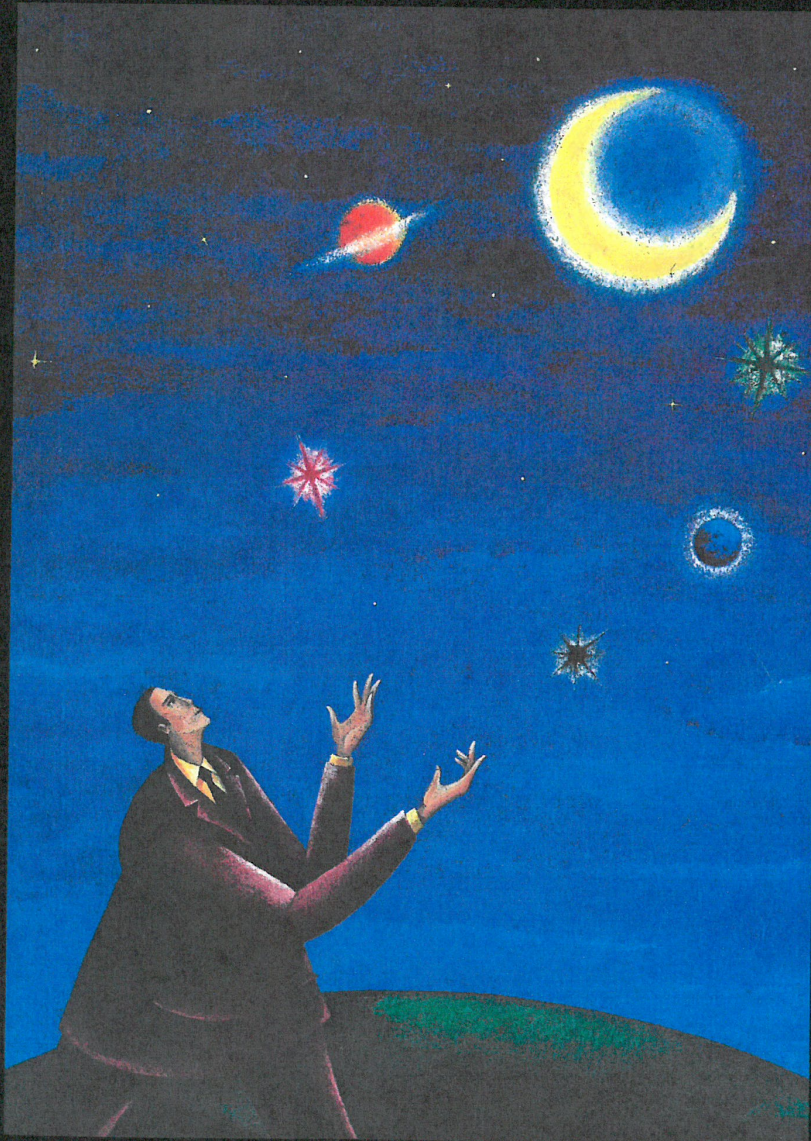


AGFA APOGEE

The PDF-based Production System

- Apogee Pilot
- Apogee PDF RIPs
- Apogee PrintDrive



The Open Digital Workflow

Agfa Apogee is the first PDF-based production system. Unlike anything before, Apogee uses Adobe's industry standard PDF format as the native file format of the system. This one format can be used for both production and imaging, and eliminates the need to convert to intermediate file formats.

Apogee adheres to the new NORM-approach: you Normalize the file Once, and Render it Many times for different output processes or devices.

In Apogee, PDF becomes the "digital master", a single file format that can be used to produce the same content in print, on a digital press, on the Web or CD-ROM.

AGFA 
The complete picture.

**DOCKET
ALARM**

Find authenticated court documents without watermarks at docketalarm.com.

AGFA APOGEE PRODUCTION SYSTEM

Using the PDF Digital Master

PDF and the Digital Master

Agfa Apogee is a production system solution that utilizes the PDF data format as a truly reliable Digital Master. This also fits the new, open NORM-approach: Normalize a file Once to become the Digital Master, and Render it Many times for specific devices.

With the Job Ticket implementation based on Adobe Portable Job Ticket technology, important job and printing information is carried along with the PDF file. By keeping formatting information separate from PDF content, it is easy to make late production changes, and publish the PDF file in other print or electronic forms. Designers, service bureaus, and printers can easily prepare and process production jobs for various output types. Using the PDF, flexibility for last minute content editing and easy remote revisions is always maintained.

On top of this, the compact, streamlined PDF format travels with ease throughout the production flow, reducing transfer and processing loads on the network and the hardware platform.

Apogee System Components:

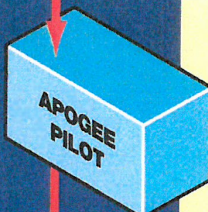
- Agfa's Apogee Publishing Production System ideally includes
- the APOGEE PILOT, a PDF production manager;
 - one or more APOGEE PDF RIPS, and
 - the APOGEE PRINTDRIVE, an engine output manager.

Handling both PDF and PostScript files, the Apogee Production System easily adapts to any open platform environment.



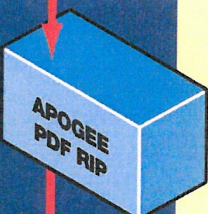
Creating the content

- Any application on any platform
- Output PostScript or PDF



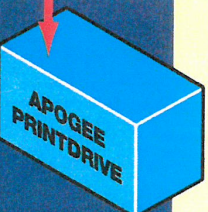
Normalize into PDF Digital Masters

- Apogee CEPSTLink
- Apogee Normalizer
- Apogee PageStore
(Remote viewing and approving, proofing, editing,...)
- Job Ticket Editing
(Job Info, Page Selection, Process definition, Output definition)
- Apogee Imposition
- Apogee OPI



Render into Print Image Files

- Separation
- Color Management
- Trapping
- Screening
- Output to proof, film, plate, PrintDrive



Manage the Print Image Files

- Multiple RIP input
- Print Image File Management
- Output device management
- Output to proof, film, plate
- Last minute corrections

APOGEE PILOT

Normalize into PDF Digital Masters

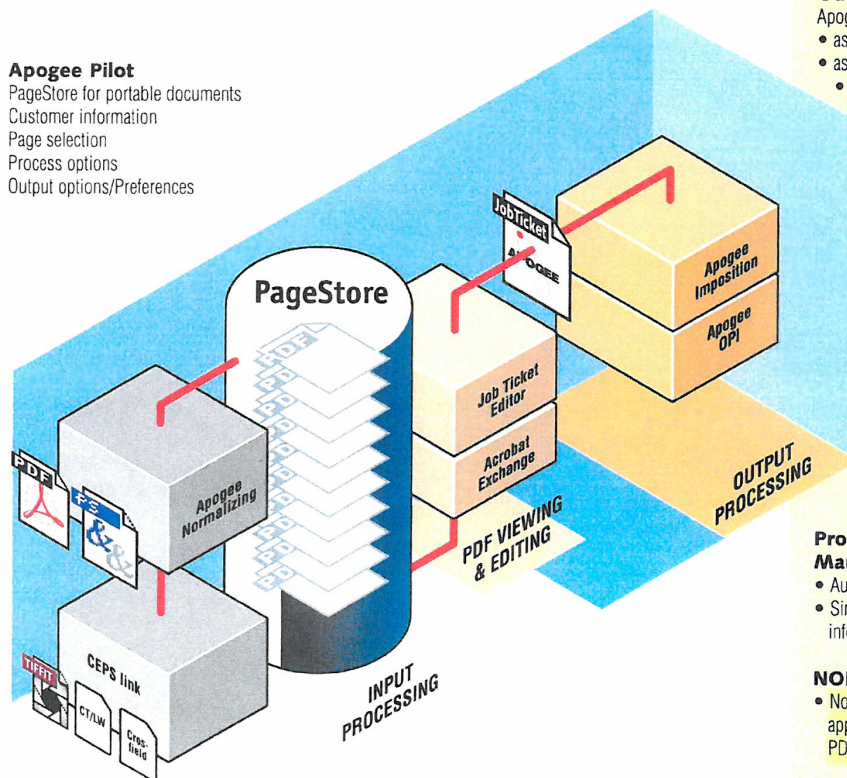
The Apogee Pilot is the operational center in the production process. It uses a three step approach to organize the workflow: normalize the files into PDF Digital Masters; edit the Job Tickets; and process the PDF file as instructed in the Job Ticket.

All incoming files are normalized into Digital Masters in PDF format. This happens only once and is similar to the interpretation phase of a RIP. It makes the resulting Digital Master highly efficient, regularly structured and compact.

Job information, workflow routing, page and formatting settings for the production processes are specified with the Job Ticket Editor and stored separately in Adobe's Portable Job Tickets Format (PJTF).

To output films or plates, the Job Ticket instructions are processed, pages are retrieved from the PageStore and imposed. If needed, high resolution images are exchanged with OPI. Using Acrobat Exchange or any other PDF editing tool, changes can be implemented on an object, page or flat level until the last minute prior to rasterizing.

Apogee Pilot
 PageStore for portable documents
 Customer information
 Page selection
 Process options
 Output options/Preferences



FEATURES & BENEFITS

Unique PDF-based workflow

- The Apogee Pilot takes advantage of all PDF benefits.
- Agia's unique normalizer generates fully predictable PDF files, using them as Digital Masters.
 - Agia's normalizer includes specific solutions to handle bleeds, in-RIP trapping, Duotone and Tritone settings, etc.
 - The PDF format guarantees compact, fully viewable, editable, searchable and portable documents.

Job Ticket controlled workflow

- Job Tickets automatically instruct the system components to perform specific actions.
- Apogee's Job Tickets are compatible with Adobe's Portable Job Ticket Format specification standard.

Completely integrated workflow

- Integrated imposition, OPI, trapping, screening, and proofing guarantee seamless production and a short learning curve.
- Every step uses PDF-based, non-proprietary tools.

Input Compatibility

- The Apogee Pilot directly processes PDF and PostScript jobs, for flexibility when working with customers.
- As an option, CEPS data formats can be converted into PDF files to support input from proprietary systems.

Output Flexibility

- Apogee Pilot outputs jobs:
- as PDF or PostScript Level 2 files, for RIP flexibility
 - as imposed "flats" or a continuous stream of pages,
 - with extra compression or downsampling for proofing or CD-ROM/ Internet/ Intranet publishing.

Easy integration

- As a Windows NT based product running on Intel platforms, Apogee Pilot can easily be integrated into existing workflows and systems.

Productivity

- With PDF Digital Masters you receive:
- Predictable results to avoid costly remakes.
 - Short and easy correction cycles for higher productivity.
 - Changes made at the last minute are done in PDF, so your digital master remains up-to-date for repurposing.

Process and Information Management

- Automatic extracting and cataloging of job data.
- Simple queries allow for extensive process and information management.

NORM

- Normalize Once, Render Many: Flexible, reliable approach based on the use of the open standard PDF Digital Master files.

APOGEE PILOT

Processing steps

Normalizing the files

All incoming files are normalized into PDF to guarantee complete predictability and compatibility. Agfa's normalizer, based on Adobe technology, includes specific solutions to handle bleeds, in-RIP trapping, Duotone and Tritone settings, etc. A check verifies if all resources needed for output are available.

If some source pages are in CEPS formats, the optional Apogee CEPStLink component handles the conversion of TIFF/IT-P1, CT/LW or Crosfield Textran formats prior to normalizing into PDF.

Once normalized, the PDF files are moved to the central PageStore as individual PDF pages and become the Digital Masters to create all production versions.

PDF Editing

One of the major advantages of Apogee Pilot is that anytime during the process prior to final rendering, changes or corrections can be made.

Commercially available PDF applications or Adobe Acrobat Exchange plug-ins offer a variety of tools to conveniently edit layout, text, images or graphic objects of most any kind. And as a Digital Master, changes made in the PDF file at any stage of production are retained for reuse in additional print or electronic versions. Being PDFs, the Digital Masters can easily be used for remote viewing, proofing, approval and editing.

Job Ticket Creation

In the Apogee Pilot, Job Tickets provide detailed production instructions. The Job Ticket is independent of the PDF Digital Master file and can be created, edited and saved separately. It can be re-used with other jobs, just as each job could be processed on several different Job Tickets. Additionally, if changes need to be made late in the production process, a simple click on a button allows you to edit the Job Ticket.

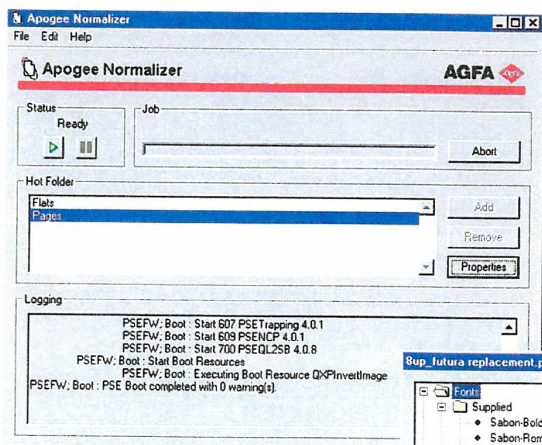
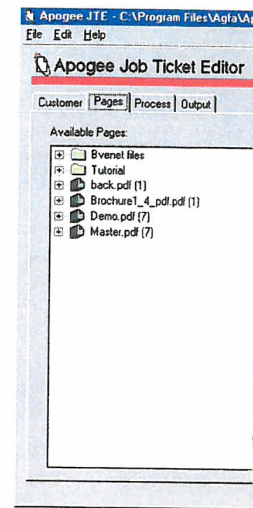
Creating the Job Ticket is very simple. First you enter general job information, such as the job name, client and invoicing information. A special section is available to add production notes.

The second step is page selection from the PageStore. PDF Digital Master pages can be easily exchanged, moved, added or deleted.

Using a PDF preview function like Adobe Acrobat, jobs can be checked visually for content. Additionally, one click of the information button provides a comprehensive list of all elements, such as fonts, spot colors and embedded file formats.

Next you select process options such as imposition, trapping, and separation, including special settings for spot colors and screening techniques, all according to specific device requirements.

Finally you define device-specific output options such as media type or plate size, and output options. After that the job is submitted for automatic processing.

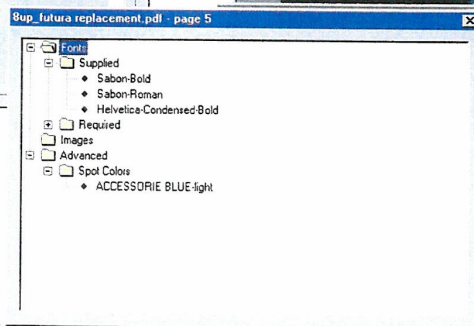


Normalizing the files

All incoming files are normalized into PDF to guarantee complete predictability and compatibility.

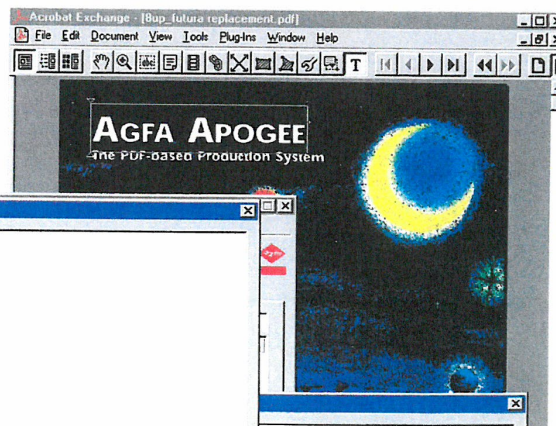
Content information

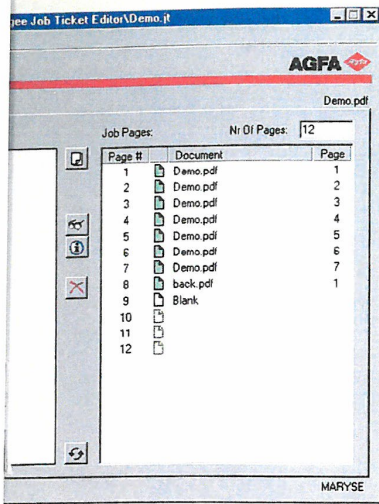
Page object info is just a click away.



Edit your PDF at all times

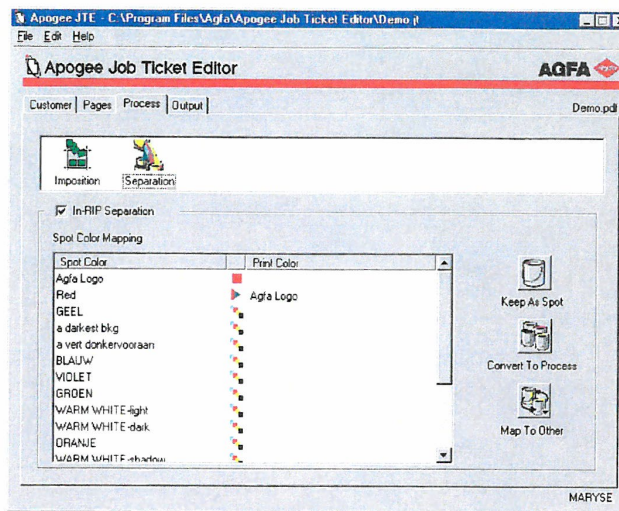
Edit, skew, rotate, color your text.
Change clipping paths.





The PageStore
 Drag documents or pages from the PageStore on the left and drop them onto the outline of your document on the right side.

Spot color mapping
 You can conveniently specify spot color handling



Job Ticket Processing

Based on the Job Ticket settings, Apogee Pilot routes the digital masters to the appropriate output process.

Apogee Imposition

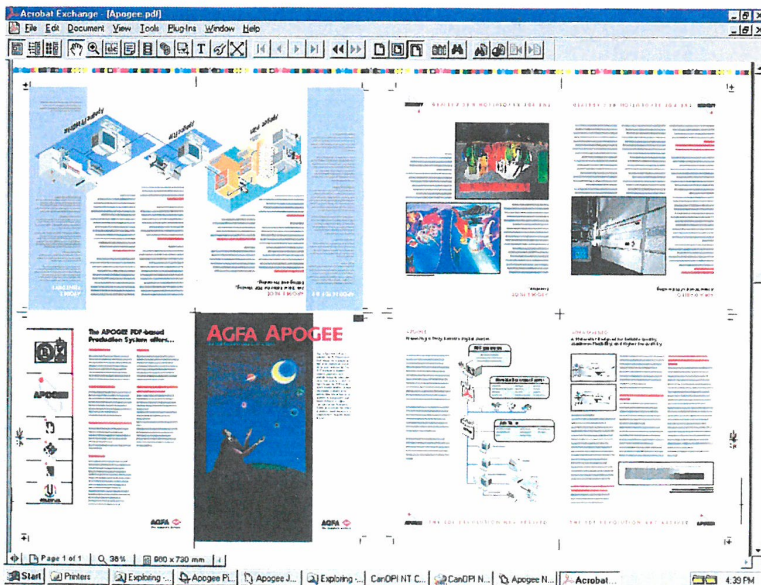
Imposition is handled automatically by selecting one of the many pre-designed imposition templates accessible from the Job Ticket Editor. As required, interactive imposition adjustment is also possible prior to output.

Apogee OPI

Apogee offers an optional NT-based OPI package. The component is completely integrated in the workflow and provides additional features such as high resolution image checking. For users with existing OPI solutions, Apogee Pilot can automatically direct files to an outside server queue. In either case, low-resolution images are replaced prior to routing to the Apogee PDF RIP. Alternatively, users can retain EPSF or PS files with, or without, high resolution images for archiving or other applications.

Output Options

Early in the development process, Agfa realized that any new workflow could create legacy equipment challenges for customers. The Apogee Pilot can output PDF or "Normalized" PostScript files to maintain compatibility with almost any PostScript-compatible system from Agfa – and even other vendors. Pilot can output files of imposed flats or a continuous stream of pages. And Digital Masters can be specially created for proofing, with high or low resolution images, or for publishing on the Web or CD-ROM.



Preview of imposed files

This preview shows how Apogee Pilot delivers an 8-up imposed PDF file ready for

- remote approval
- imposition proofing
- native PDF RIPping in Apogee PDF RIPs.

Explore Litigation Insights

Docket Alarm provides insights to develop a more informed litigation strategy and the peace of mind of knowing you're on top of things.

Real-Time Litigation Alerts



Keep your litigation team up-to-date with **real-time alerts** and advanced team management tools built for the enterprise, all while greatly reducing PACER spend.

Our comprehensive service means we can handle Federal, State, and Administrative courts across the country.

Advanced Docket Research



With over 230 million records, Docket Alarm's cloud-native docket research platform finds what other services can't. Coverage includes Federal, State, plus PTAB, TTAB, ITC and NLRB decisions, all in one place.

Identify arguments that have been successful in the past with full text, pinpoint searching. Link to case law cited within any court document via Fastcase.

Analytics At Your Fingertips



Learn what happened the last time a particular judge, opposing counsel or company faced cases similar to yours.

Advanced out-of-the-box PTAB and TTAB analytics are always at your fingertips.

API

Docket Alarm offers a powerful API (application programming interface) to developers that want to integrate case filings into their apps.

LAW FIRMS

Build custom dashboards for your attorneys and clients with live data direct from the court.

Automate many repetitive legal tasks like conflict checks, document management, and marketing.

FINANCIAL INSTITUTIONS

Litigation and bankruptcy checks for companies and debtors.

E-DISCOVERY AND LEGAL VENDORS

Sync your system to PACER to automate legal marketing.