

Ex. PGS 1004

United States Patent [19]

[11] **Patent Number:** 5,790,472

Workman et al.

[45] **Date of Patent:** Aug. 4, 1998

[54] **ADAPTIVE CONTROL OF MARINE SEISMIC STREAMERS**

5,353,223 10/1994 Norton et al. 364/421
 5,443,027 8/1995 Owsley et al. 114/244
 5,532,975 7/1996 Elholm 367/16

[75] **Inventors:** Ricky L. Workman; Ronald Edward Chambers, both of Houston, Tex.

OTHER PUBLICATIONS

[73] **Assignee:** Western Atlas International, Inc., Houston, Tex.

M. Schoenberger and J. F. Misfud, "Hydrophone Streamer Noise", *Geophysics*, vol. 39, No. 6, pp. 781-793.
 Franklyn K. Levin in "Short Note: The Effect of Binning on Data from a Feathered Streamer", *Geophysics*, vol. 49, No. 8, pp. 1386-1387.
 Mamdouh R. Gadallah, "Reservoir Seismology", *Pennwell*, 1994, pp. 209-237.
 Manin et al., "Recent Developments in Source and Streamer Positioning" *First Break*, vol. 6, pp. 183-188, Jun. 1981.

[21] **Appl. No.:** 771,049

[22] **Filed:** Dec. 20, 1996

[51] **Int. Cl.⁶** G01V 1/38

[52] **U.S. Cl.** 367/19; 367/16

[58] **Field of Search** 367/16, 19, 20, 367/106, 130, 17; 114/253

Primary Examiner—Ian J. Lobo

Attorney, Agent, or Firm—James Randall Allen; Charles R. Scheppe

[56] **References Cited**

U.S. PATENT DOCUMENTS

3,931,608	1/1976	Cole	340/7	PC
4,033,278	7/1977	Waters	144/245	
4,087,780	5/1978	Itria et al.	340/7	
4,187,492	2/1980	Delignieres	367/19	
4,404,664	9/1983	Zachariadis	367/19	
4,463,701	8/1984	Pickett et al.	114/245	
4,729,333	3/1988	Kirby et al.	114/244	
4,809,005	2/1989	Counselman	342/352	
4,890,568	1/1990	Dolengowski	114/246	
4,912,682	3/1990	Norton, Jr. et al.	367/19	
5,031,159	7/1991	Rouquette	367/130	

[57] **ABSTRACT**

A method for controlling the position and shape of marine seismic streamer cables, whereby a plurality of real time signals from a marine seismic data acquisition system and a plurality of threshold parameters from an input device are received. The real time signals are compared to the threshold parameters to determine if the streamer cables should be repositioned. The streamer cables are repositioned when the real time signals exceed the threshold parameters.

10 Claims, 3 Drawing Sheets

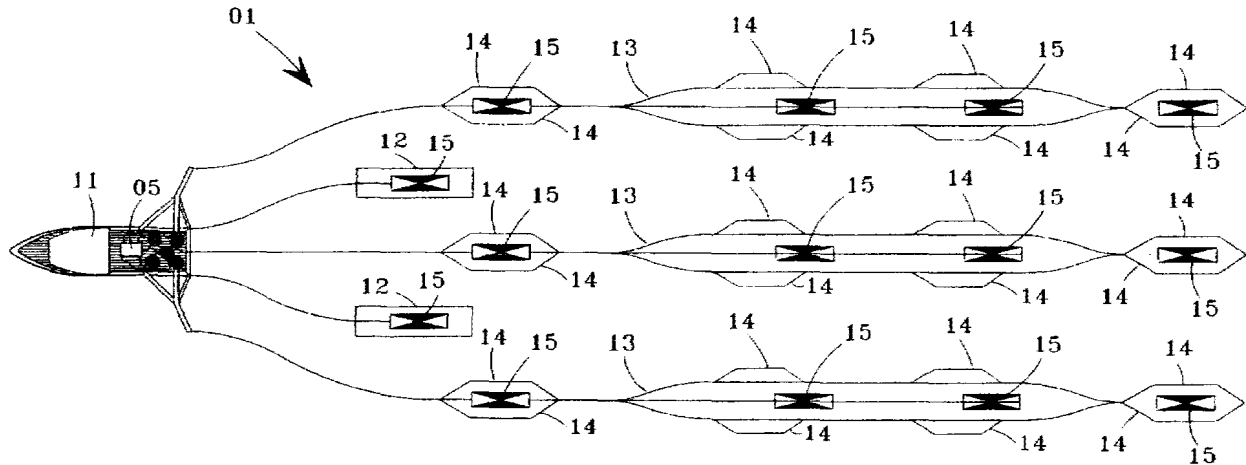


Fig. 1

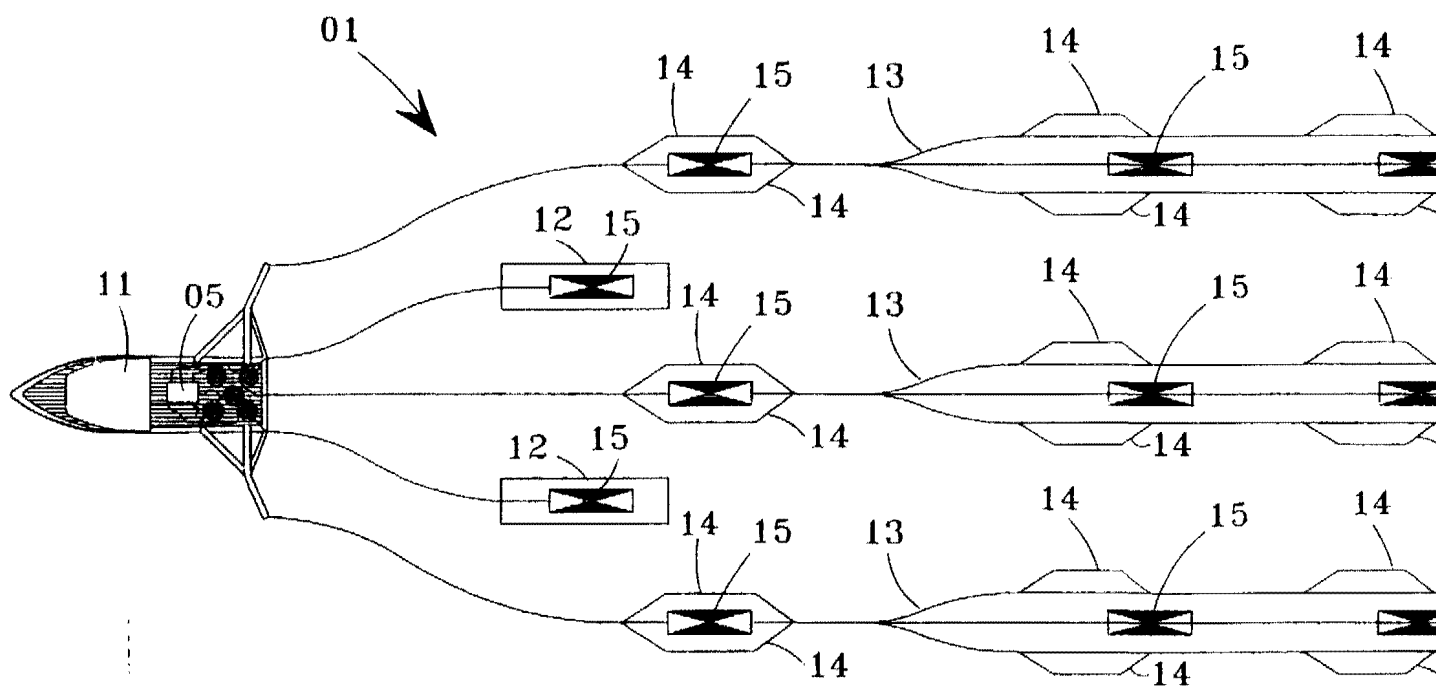
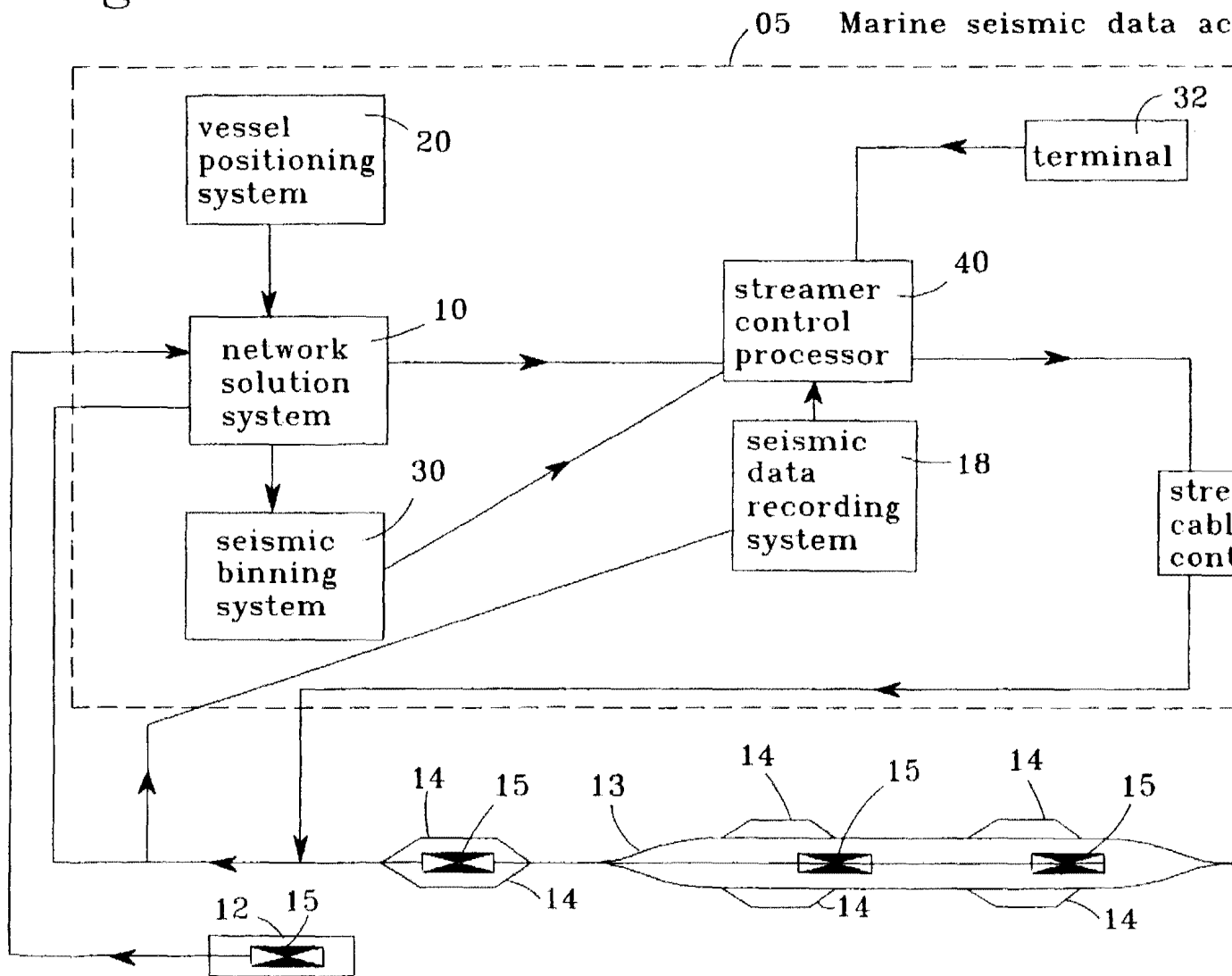
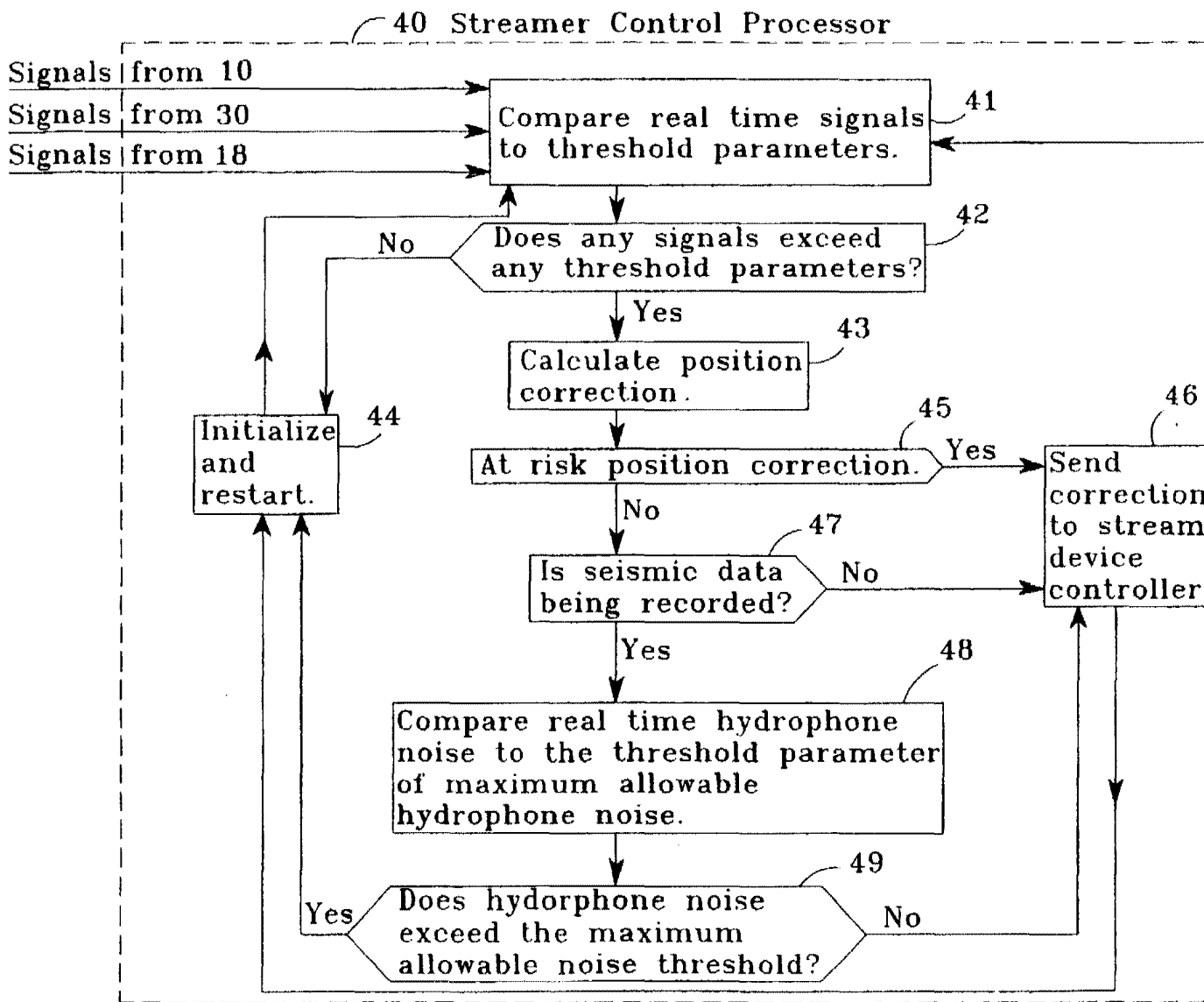


Fig. 2





Explore Litigation Insights

Docket Alarm provides insights to develop a more informed litigation strategy and the peace of mind of knowing you're on top of things.

Real-Time Litigation Alerts



Keep your litigation team up-to-date with **real-time alerts** and advanced team management tools built for the enterprise, all while greatly reducing PACER spend.

Our comprehensive service means we can handle Federal, State, and Administrative courts across the country.

Advanced Docket Research



With over 230 million records, Docket Alarm's cloud-native docket research platform finds what other services can't. Coverage includes Federal, State, plus PTAB, TTAB, ITC and NLRB decisions, all in one place.

Identify arguments that have been successful in the past with full text, pinpoint searching. Link to case law cited within any court document via Fastcase.

Analytics At Your Fingertips



Learn what happened the last time a particular judge, opposing counsel or company faced cases similar to yours.

Advanced out-of-the-box PTAB and TTAB analytics are always at your fingertips.

API

Docket Alarm offers a powerful API (application programming interface) to developers that want to integrate case filings into their apps.

LAW FIRMS

Build custom dashboards for your attorneys and clients with live data direct from the court.

Automate many repetitive legal tasks like conflict checks, document management, and marketing.

FINANCIAL INSTITUTIONS

Litigation and bankruptcy checks for companies and debtors.

E-DISCOVERY AND LEGAL VENDORS

Sync your system to PACER to automate legal marketing.