



US005561610A

United States Patent [19]

[11] Patent Number: **5,561,610**

Schricker et al.

[45] Date of Patent: **Oct. 1, 1996**

[54] **METHOD AND APPARATUS FOR INDICATING A FAULT CONDITION**

[75] Inventors: **David R. Schricker, Dunlap; Satish M. Shetty, East Peoria, both of Ill.**

[73] Assignee: **Caterpillar Inc., Peoria, Ill.**

[21] Appl. No.: **268,693**

[22] Filed: **Jun. 30, 1994**

[51] Int. Cl.⁶ **G08B 23/00**

[52] U.S. Cl. **364/551.01; 340/679**

[58] Field of Search **340/679, 680; 364/550, 551.01, 551.02**

4,583,176	4/1986	Yamato et al.	364/431.11
4,749,987	6/1988	Ishii	340/587
4,787,053	11/1988	Moore	364/551.01
4,803,469	2/1989	Matsushita	340/577
4,825,195	4/1989	Berruyer	340/501
4,967,381	10/1990	Lane et al.	364/551.01
5,155,468	10/1992	Stanley et al.	340/501
5,258,923	11/1993	Imam et al.	364/508
5,303,163	4/1994	Ebaugh et al.	364/550

Primary Examiner—Edward R. Cosimano

Attorney, Agent, or Firm—Steven R. Janda; Mario J. Donato

[57] ABSTRACT

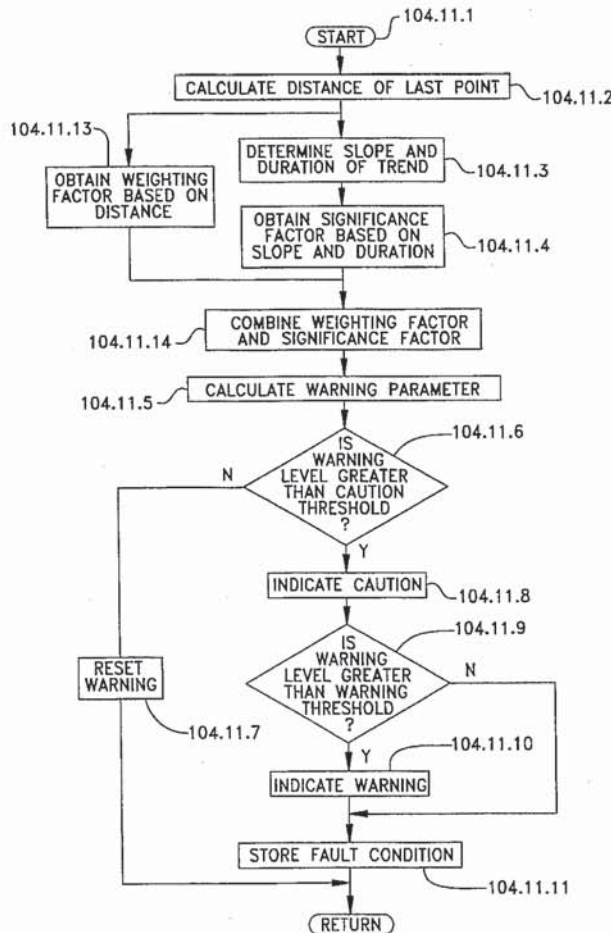
An apparatus is provided for indicating a fault condition in a machine having a plurality of parameters each having levels being dependent upon machine performance. The apparatus includes a sensor adapted to produce an electrical signal in response to the level of one of the of parameters; and a processor for identifying a trend in the parameter level in response to the electrical signal, calculating the duration and slope of the trend; and determining whether a first warning threshold is exceeded in response to the duration and slope of the trend, the first warning threshold being a function of duration and slope.

16 Claims, 10 Drawing Sheets

[56] References Cited

U.S. PATENT DOCUMENTS

Re. 31,750	11/1984	Morrow	364/550 X
3,257,652	6/1966	Foster	340/680 X
3,298,010	1/1967	Dubosq et al.	340/679 X
3,882,305	5/1975	Johnstone	235/151.11
3,946,364	3/1976	Codomo et al.	340/172.5
4,093,939	6/1978	Mitchell	340/52
4,184,205	1/1980	Morrow	364/550 X
4,542,461	9/1985	Eldridge et al.	364/424



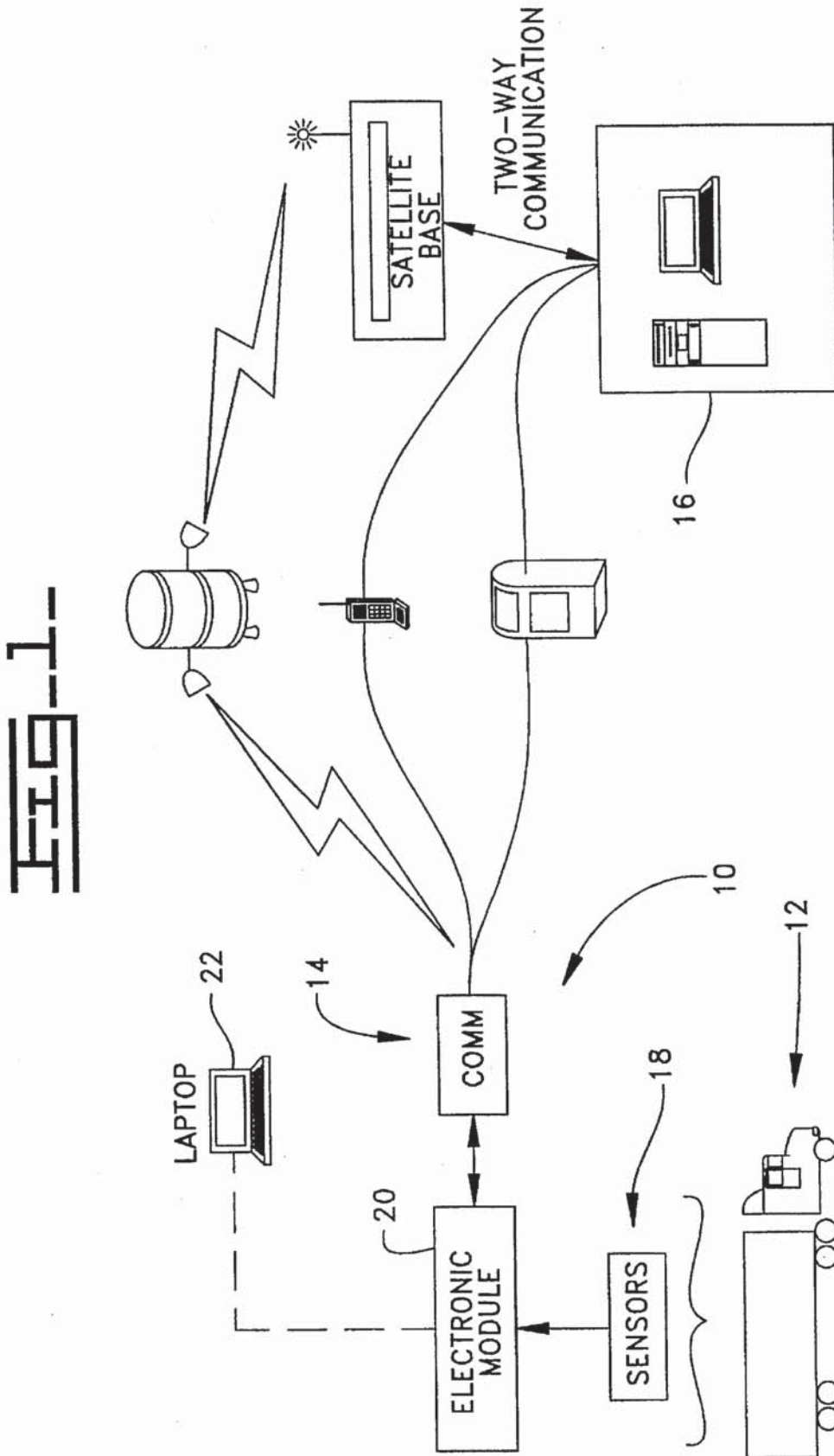


FIG. 2-

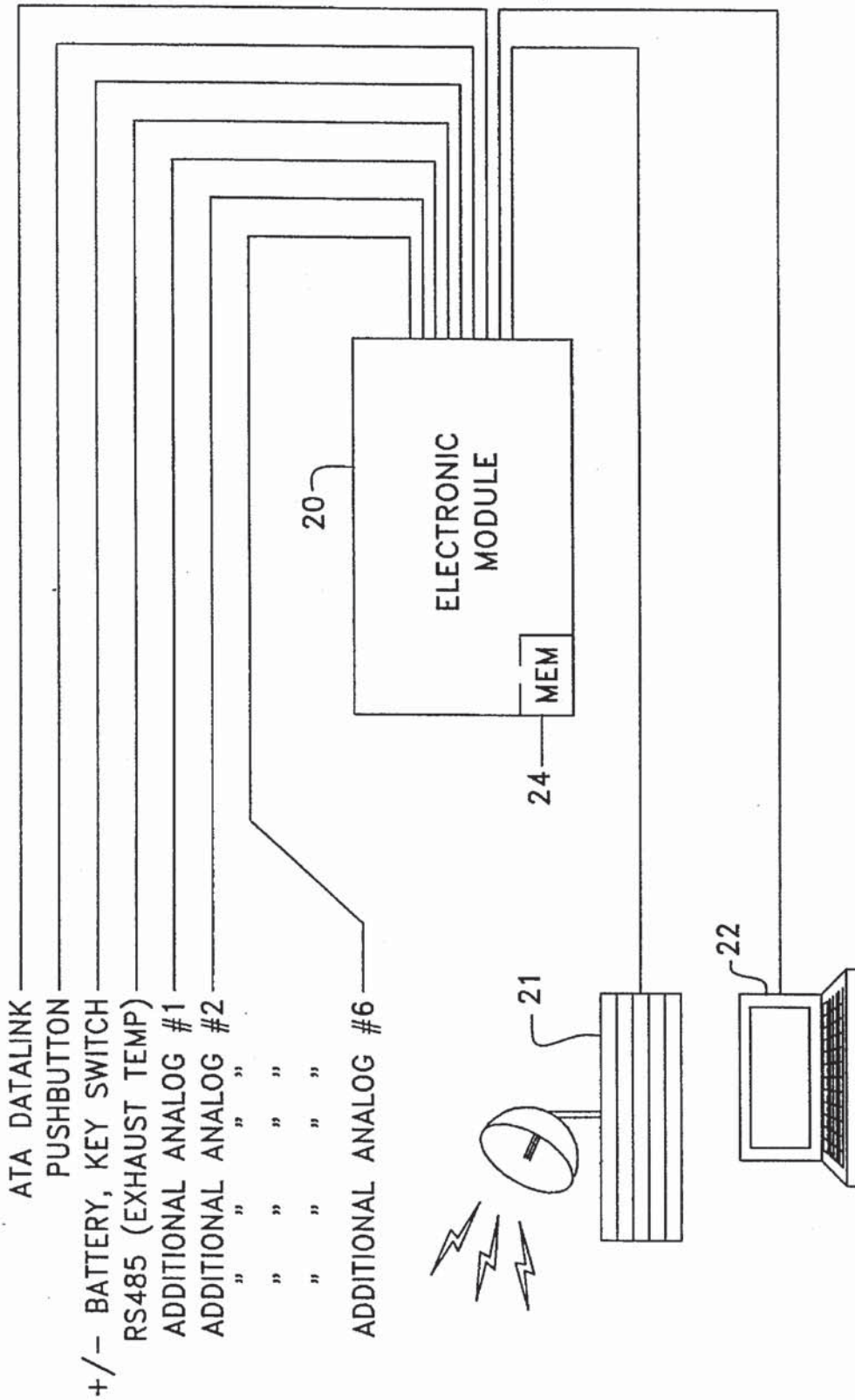


Fig. 3.

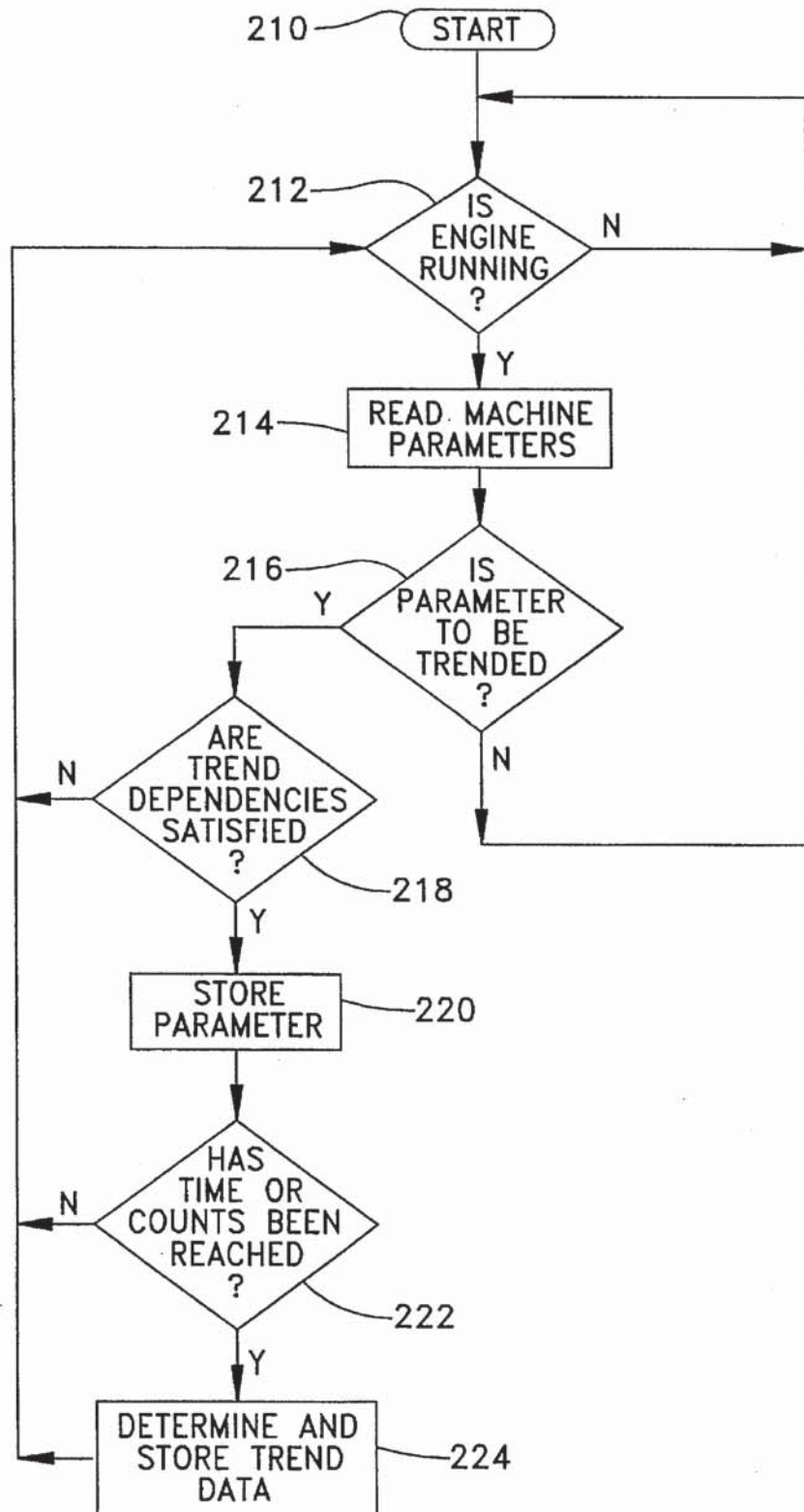
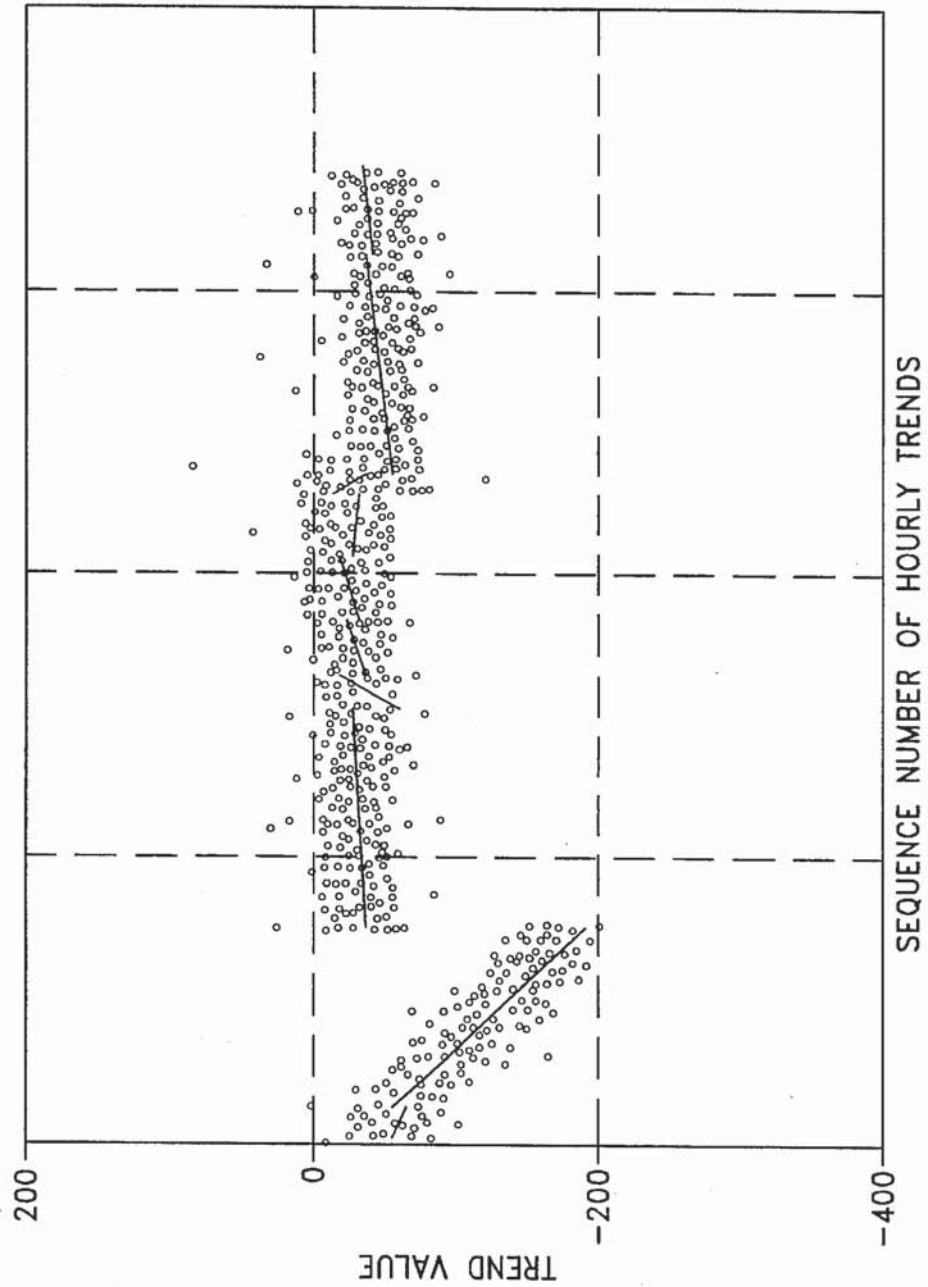


FIG-4-



Explore Litigation Insights

Docket Alarm provides insights to develop a more informed litigation strategy and the peace of mind of knowing you're on top of things.

Real-Time Litigation Alerts



Keep your litigation team up-to-date with **real-time alerts** and advanced team management tools built for the enterprise, all while greatly reducing PACER spend.

Our comprehensive service means we can handle Federal, State, and Administrative courts across the country.

Advanced Docket Research



With over 230 million records, Docket Alarm's cloud-native docket research platform finds what other services can't. Coverage includes Federal, State, plus PTAB, TTAB, ITC and NLRB decisions, all in one place.

Identify arguments that have been successful in the past with full text, pinpoint searching. Link to case law cited within any court document via Fastcase.

Analytics At Your Fingertips



Learn what happened the last time a particular judge, opposing counsel or company faced cases similar to yours.

Advanced out-of-the-box PTAB and TTAB analytics are always at your fingertips.

API

Docket Alarm offers a powerful API (application programming interface) to developers that want to integrate case filings into their apps.

LAW FIRMS

Build custom dashboards for your attorneys and clients with live data direct from the court.

Automate many repetitive legal tasks like conflict checks, document management, and marketing.

FINANCIAL INSTITUTIONS

Litigation and bankruptcy checks for companies and debtors.

E-DISCOVERY AND LEGAL VENDORS

Sync your system to PACER to automate legal marketing.