

SIMPLICITY  
**4890** SIZE KK



SIMPLICITY PATTERN CO. INC., 2 PARK AVENUE, NEW YORK, NY 10016, USA  
 DOMINION SIMPLICITY PATTERNS LTD., 495 FINCHdene SQUARE, EAST HALF (UNIT A), SCARBOROUGH, ONTARIO M1X 1B7, CANADA  
 SIMPLICITY PATTERNS PTY. LTD., 25 VIOLET STREET, REVESSBY, NSW 2212, AUSTRALIA  
 IMPORTADO Y DISTRIBUIDO POR: SIMPLICITY S.A. de C.V. PERIFERICO SUR NO. 5427 ESQ. 10 OTE. COL. ISIDRO PABELA MEXICO, D.F. 14039  
 R.F.C. SIM - 950227 - TL1 TEL. Y FAX: 525-528-3094  
 EXPORTADO POR: SIMPLICITY PATTERN CO., INC. 901 WAYNE STREET NILES, MI 49121 E.U.A.  
 FRACCION ARANCELARIA: 4823014  
 -ADUANA: LAREDO, TEXAS -PAIS DE ORIGEN: ESTADOS UNIDOS DE AMERICA  
 -CONTENIDO NE: 1 P.E.Z.  
 -DESCRIPCION: PATRON DE COSTURA  
 © 2004 BY SIMPLICITY PATTERN CO. INC. PRINTED IN USA SIMPLICITY IS A REGISTERED TRADEMARK

 **\$15.95**  
USA  
price code A code pour prix

**4890** SIZE KK 8,10,12,14  
EUR. 34-40 FR. 36-42

**Simplicity**



FOR THIS PATTERN - 4" (10cm) OF KNIT FABRIC MUST STRETCH ACROSS/ISE FROM HERE TO HERE - LE PATRON - LE VESTIR DE MUS LA LARGEUR DE 10cm DEPUIS ICI JUSQU'À LA HAUSTE ALLÀ



### AND BAG

Male Corduroy, Soft Lightweight, Linen and Linen Blends, A,B,C,D,E also in Jersey, Seersucker, Silks and Silk Types, Crepe, Matte Jersey, F also in Suede Cloth, Satin, Tulle, and Velvet. A Front Panel sized for stretch knits only. See Pick-A-Knit® Rule. Extra fabric for one-way design fabrics.

Look for Simplicity notions, Simplicity Trims™, and Wrights® Trims.

31½	32½	34	36	38	40	42	44	46	in
24	25	26½	28	30	32	34	37	39	"
33½	34½	36	38	40	42	44	46	48	"
15½	16	16½	16½	16½	17	17½	17½	17½	"
8	10	12	14	16	18	20	22	24	"
34	36	38	40	42	44	46	48	50	"
2½	2½	2½	2½	2½	2½	2½	2½	2½	Yd
1½	1½	2½	2½	2½	2½	2½	2½	2½	"
2½	2½	2½	2½	2½	2½	2½	2½	2½	"

non or flexible braid  
 4½ 4½ 4½ 4½ 4½ 4½ 4½ 4½ 4½ Yd  
 3½ 3½ 3½ 3½ 3½ 3½ 3½ 3½ 3½ "

non or flexible braid  
 3½ 3½ 3½ 3½ 3½ 4 4 4 Yd  
 2½ 2½ 2½ 2½ 2½ 2½ 3 3½ 3½ "

3½ lightweight fusible  
 2½ 2½ 2½ 2½ 2½ 3 3½ 3½ 3½ Yd  
 2 2 2 2 2 2½ 2½ 2½ 2½ "

lightweight fusible  
 2½ 2½ 2½ 2½ 2½ 2½ 2½ 2½ 2½ Yd  
 2 2 2 2 2 2½ 2½ 2½ 2½ "

lightweight fusible  
 3½ 3½ 3½ 3½ 3½ 4½ 4½ 50% 52% In  
 40 41 42½ 44½ 46½ 48% 50% 52% 54% "

of neck  
 40% 41 41½ 41½ 41½ 42 42½ 42½ 42½ In  
 62% 63% 65 67 69 71 73 75 77 "

### ROBE OU HAUT, PANTALON ET SAC DE MATERNITE

Tissus: Denim Léger, Velours Côtelé, Toile de Lin et mélanges de lin souples et fins, A,B,C,D,E en Vichy, Cotons prélavés, Seersucker, Soies et tissus soyeux, Crêpe, Jersey, Mats aussi, F en Tissu suédé, Cuir et Suedine Synthétiques aussi. A Panneau devant en jerses extensibles seulement. Voyez la Règle Pour Choisir Un Jersey®. Prévoyez davantage de tissu pour raccorder les épaissais, les rayures ou les motifs unidirectionnels. Mercerie: Fil, F. Une grosse agrafe. Demandez la mercerie de Simplicity et les garnitures de Simplicity Trims et de Wrights®.

VESTIDO O BLUSA Y PANTALON Y BOLSO DE MATERNIDAD  
 Telas: Drii ligero, Terciopelo de cordoncillos; Tela de lino y mezclas de lino fino. A,B,C,D,E en Guingán, Algodones lavados, Seersucker, Sedas y telas sedosas, Crepe, Mallas mates, F en Gamuza, Cuero sintético y Gamuza sintética. A Pano del frente en mallas estirables solamente. Se necesita tela adicional para casar cuadros, rayas o telas estampadas en una dirección.  
 Mercería: Hiljo, F: Un gran broche de presión. Pida la mercería de Simplicity y los adornos de Simplicity Trims™ y de Wrights® Trims.

<b>MEASURES/NORMALISEES/MEDIDAS DEL CUERPO</b>										
Ponder/Busto	80	83	87	92	97	102	107	112	117	cm
Taille/Cintura	61	64	67	71	76	81	87	94	99	"
Hanches (23cm au-dessous de la taille)/Caderas (23cm abajo de la cintura)										
	85	88	92	97	102	107	112	117	122	"
Dos (encolure à taille/Espalda (escote a cintura)										
	40	40.5	41.5	42	42.5	43	44	44	44.5	"

Tailles/Tallas	8	10	12	14	16	18	20	22	24
Tailles Françaises	36	38	40	42	44	46	48	50	52
Tailles Européennes	34	36	38	40	42	44	46	48	50

A Pantalon/ A Pantalón  
 115cm\*\* 2.20 2.30 2.30 2.30 2.40 2.40 2.40 2.40 2.40 m  
 150cm\*\* 1.30 2.00 2.00 2.00 2.10 2.20 2.30 2.40 "

Panneau Devant 0.40m de jersey de 150cm\*\*/ Pano del frente 0.40m de mallas de 150cm\*\*  
 Elastique 1.30m de 2.5cm de large/Elastico 1.30m de 2.5cm de ancho.

B Robe/ B Vestido  
 115cm\*\* 3.90 4.00 4.00 4.20 4.20 4.20 4.30 4.30 4.30 m  
 150cm\*\* 3.00 3.00 3.10 3.10 3.10 3.20 3.20 3.30 3.50 "

Garniture (facult.) 4.20m de ruban ou de soutache extensible de 1.5cm de large  
 Adorno (opcional) 4.20m de cinta o de galón estirable de 1.5cm de ancho.

C Robe/ C Vestido  
 115cm\*\* 3.50 3.50 3.50 3.50 3.60 3.60 3.60 3.60 3.60 m  
 150cm\*\* 2.50 2.50 2.50 2.50 2.50 2.70 2.70 3.00 3.40 "

B,C Entoilage 2.50m de 55cm à 64cm, léger, thermocoilant/B,C Entretela 2.50m de 55cm à 64cm, légère.  
 D Haut/ D Blusa  
 115cm\*\* 2.10 2.10 2.30 2.50 2.60 2.70 2.80 2.80 2.90 m  
 150cm\*\* 1.90 1.90 1.90 2.00 2.00 2.00 2.10 2.20 "

E Haut/ E Blusa  
 115cm\*\* 2.30 2.50 2.60 2.60 2.70 2.80 2.80 2.90 3.10 m  
 150cm\*\* 2.20 2.20 2.30 2.30 2.30 2.40 2.40 2.50 2.60 "

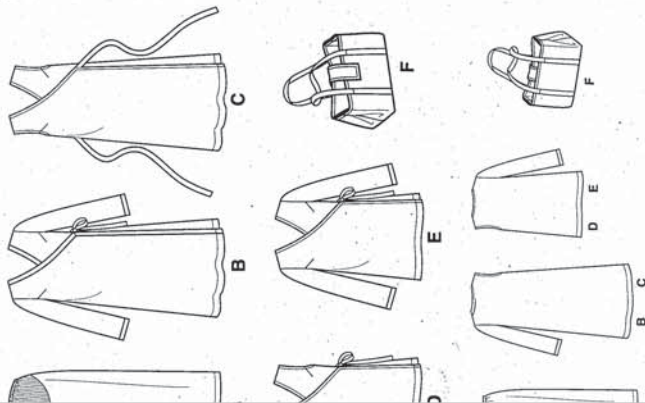
Garniture (facult.) 1.30m de ruban ou de soutache extensible de 1.5cm de large  
 Adorno (opcional) 1.30m de cinta o de galón estirable de 1.5cm de ancho.

D,E Entoilage 1.80m de 55cm à 64cm, léger, thermocoilant  
 D,E Entretela 1.80m de 55cm à 64cm, légère, adhesiva.  
 F Sac 0.50m en 115cm ou 150cm\*\*; Doublure 0.40m en 115cm\*\*; Entoilage 1.00m de 55cm à 64cm, moyen, thermocoilant; Carton 11.5cm x 30.5cm; Sangle 2.00m de 2.5cm de large  
 F Bolso 0.50m de 115cm ou 150cm\*\*; Forro 0.40m en 115cm\*\*; Entretela 1.00m de 55cm à 64cm, mediana, adhesiva; Carton 11.5cm x 30.5cm; Correa 2.00m de 2.5cm de ancho.

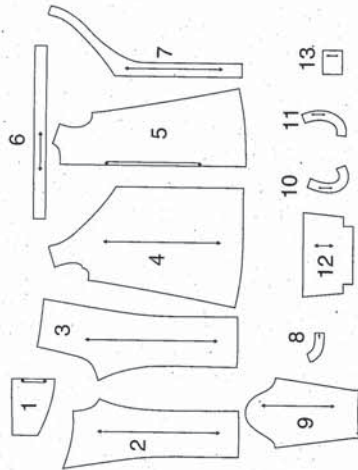
\*sans sens \*\*avec sens \*\*\*avec ou sans sens \*\*sin pelusa \*\*\*con o sin pelusa

To be used for individual private home use only and not for commercial or manufacturing purposes.





13 pieces given



- 1-FRONT PANEL -A
- 2-PANTS FRONT -A
- 3-PANTS BACK -A
- 4-FRONT -B,C,D,E
- 5-BACK -B,C,D,E
- 6-TIE END -B,C,D,E
- 7-FRONT FACING -B,C,D,E
- 8-BACK FACING -B,C,D,E
- 9-SLEEVE -B,E
- 10-FRONT ARMHOLE FACING -C,D
- 11-BACK ARMHOLE FACING -C,D
- 12-BAG FRONT AND BACK -F
- 13-TAB -F

U.S. & Canada Toll-Free 1-888-588-2700

Web Site <http://www.simplicity.com>

E-mail [info@simplicity.com](mailto:info@simplicity.com)

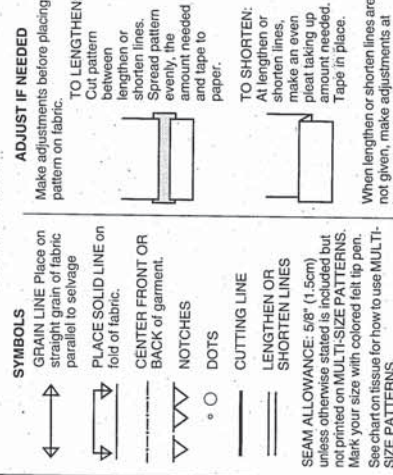
### General Directions

**ADJUST IF NEEDED**  
Make adjustments before placing pattern on fabric.

**TO LENGTHEN:**  
Cut pattern between lengthen or shorten lines. Spread pattern evenly, the amount needed and tape to paper.

**TO SHORTEN:**  
At lengthen or shorten lines, make an even pleat taking up amount needed. Tape in place.

When lengthen or shorten lines are not given, make adjustments at lower edge of pattern.



**Symbols**

- GRAIN LINE: Piece on straight grain of fabric parallel to selvage
- PLACE SOLID LINE on fold of fabric.
- CENTER FRONT OR BACK of garment.
- NOTCHES
- DOTS
- CUTTING LINE
- LENGTHEN OR SHORTEN LINES
- SEAM ALLOWANCE: 5/8" (1.5cm) unless otherwise stated is included but not printed on MULTI-SIZE PATTERNS. Mark your size with colored felt tip pen. See chart on issue for how to use MULTI-SIZE PATTERNS.

**Sewing**

- SEW garment following Sewing Directions.
- PIN or machine-baste seams matching notches.
- STITCH 5/8" (1.5 cm) seams unless otherwise stated.
- PRESS seams open unless otherwise indicated clipping when necessary so seams will lie flat.
- TRIM seams to reduce bulk, as shown below.

Trim enclosed seams into layers

Trim corners

Clip inner curves

Notch outer curves

**BEFORE CUTTING:**  
PRESS pattern pieces with a warm dry iron. PRE-SHRINK fabric by pre-washing washables or steam-pressing non-washables.

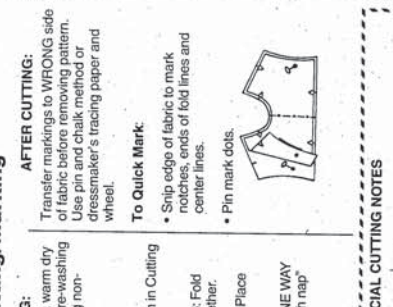
**CIRCLE** your cutting layout.

**PIN** pattern to fabric as shown in Cutting Layouts.

**FOR DOUBLE THICKNESS:** Fold fabric with RIGHT sides together.

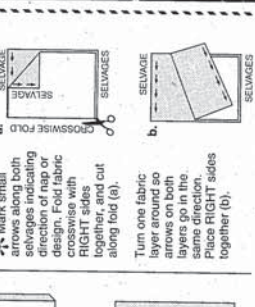
**FOR SINGLE THICKNESS:** Place fabric RIGHT side up.

**FOR PILE, SHADED OR ONE WAY DESIGN FABRICS:** Use "with nap" layouts.



**SPECIAL CUTTING NOTES**

- ★ If layout shows a piece extending past all pieces except piece that extends.
- ✱ Mark small arrows along both selvages indicating direction of nap or design. Fold fabric with RIGHT side up together, and cut along fold (a).
- Turn one fabric layer around so arrows on both sides point in same direction. Place RIGHT sides together (b).



**Spanish**

NOTA: LA LÍNEA INTERRUPTIDA SOBRE LAS PIEZAS DEL PATRÓN PARA LOS CORTES INDICA LA LÍNEA DE CORTIR.

NOTA: PARA LAS TALLAS AGUJEROS DE CIERRO SINTÉTICO AJUSTE EL PATRÓN A LA MEDIDA CORRECTA. YA QUE LOS ERRORES DE COSTURA SE NOTARÁN. COLOQUE EL PATRÓN SOBRE LA TELA SIGUIENDO LOS DIAGRAMAS DE CORTE. PARA MANTENER EL PATRÓN EN SU SITIO MIENTRAS CORTE, PRENDALO CON ALfilerES ADECUADOS EN LA COSTURA O REGULO CON UNA CINTA ADECUADA. SI SE USAN ALfilerES, TRANSFERIR TODAS LAS MARCAS CON UNA TIZALDE SASTRE. NO USE CARRETILLA. YA QUE DEJARÁ AGUJEROS EN LA TELA.

**A PANTALÓN** USE LAS PIEZAS 2 3  
 1A 44" 45" (115CM) CON PELLUSA/TODAS LAS TALLAS  
 1B 58" 60" (150CM) CON PELLUSA / TALLA 8  
 1C 58" 60" (150CM) CON PELLUSA / TALLAS 10 12 14 16 18 20 22 24

**PANO DEL FRENTE -SOLAMENTE PARA MALLAS ESTIRABLES** USE LA PIEZA 1  
 2 58" 60" (150CM) CON PELLUSA/TODAS LAS TALLAS

**B VESTIDO** USE LAS PIEZAS 4 5 6 7 8 9  
 3A 44" 45" (115CM) CON PELLUSA/TODAS LAS TALLAS  
 3B 58" 60" (150CM) CON PELLUSA/TODAS LAS TALLAS

**C VESTIDO** USE LAS PIEZAS 4 5 6 7 8 10 11  
 4A 44" 45" (115CM) CON PELLUSA/TODAS LAS TALLAS  
 4B 58" 60" (150CM) CON PELLUSA/TODAS LAS TALLAS

**D BLUSA** USE LAS PIEZAS 4 5 6 7 8 10 11  
 5A 44" 45" (115CM) CON PELLUSA/TALLAS 8 10 12 14 16  
 5B 44" 45" (115CM) CON PELLUSA / TALLAS 18 20 22 24 16  
 5C 58" 60" (150CM) CON PELLUSA/TODAS LAS TALLAS

SELVAJE(S) / SEL - O RILLO(S)  
 FOLD-DOBLEZ  
 DOUBLE THICKNESS-ESPESOR DOBLE

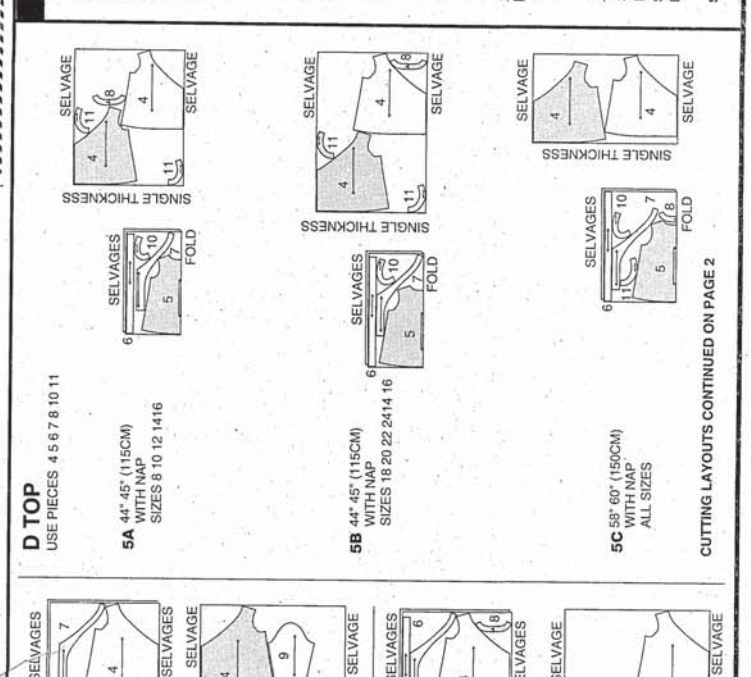
SIGA EL DIAGRAMA DE CORTE PAGINA 2

**D TOP**  
USE PIECES 4 5 6 7 8 10 11  
 5A 44" 45" (115CM) WITH NAP SIZES 8 10 12 14 16  
 5B 44" 45" (115CM) WITH NAP SIZES 18 20 22 24 14 16  
 5C 58" 60" (150CM) WITH NAP ALL SIZES

**B DRESS**  
USE PIECES 4 5 6 7 8 9  
 3A 44" 45" (115CM) WITH NAP ALL SIZES  
 3B 58" 60" (150CM) WITH NAP ALL SIZES

**C DRESS**  
USE PIECES 4 5 6 7 8 10 11  
 4A 44" 45" (115CM) WITH NAP ALL SIZES CUT ONE OF PIECE 8  
 4B 58" 60" (150CM) WITH NAP ALL SIZES

**JT PANEL - SIZED FOR STRETCH ONLY**  
 CE 1  
 0" (150CM)  
 S 10 12 14 16 18 20 22 24



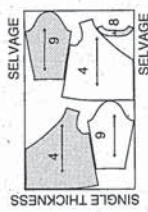


**INTERFACING**

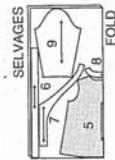
7 8 10 11  
5" (65CM TO 64CM) FUSIBLE  
WITH NAP



4 5 6 7 8 9



7B 58" 60" (150CM)  
WITH NAP  
ALL SIZES



**F BAG**

USE PIECES 12 13  
9A 44" 45" OR 58" 60" (115CM OR 150CM)  
WITH NAP

**LINING**

USE PIECE 12  
9B 44" 45" (115CM)  
WITHOUT NAP



**INTERFACING**

USE PIECES 12 13  
CUT ONE OF PIECE 13  
9C 22" TO 25" (55CM TO 64CM) FUSIBLE



**Español**

**C, D ENTRETRELA**

USE LAS PIEZAS 7 8 10 11  
6. 22" A 25" (55CM A 64CM) ADHESIVA  
TODAS LAS TALLAS

**E BLUSA** USE LAS PIEZAS 4 5 6 7 8 9  
7A 44" 45" (115CM) CON PELUSATODAS LAS TALLAS  
7B 58" 60" (150CM) CON PELUSATODAS LAS TALLAS

**B, E ENTRETRELA** USE LAS PIEZAS 7 8  
8. 22" A 25" (55CM A 64CM) ADHESIVA  
TODAS LAS TALLAS

**F BOLSO** USE LAS PIEZAS 12 13  
9A 44" 45" O 58" 60" (115CM O 150CM)  
CON PELUSA

**FORRO** USE LA PIEZA 12  
9B 44" 45" (115CM) SIN PELUSA

**ENTRETRELA** USE LAS PIEZAS 12 13  
CORTE UNA PIEZA 13  
9C 22" A 25" (55CM A 64CM) ADHESIVA



**Sewing Directions**

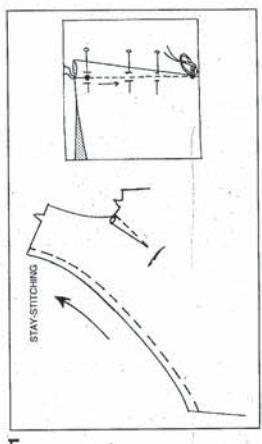
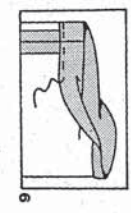
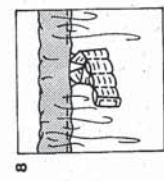
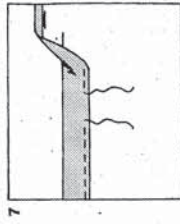
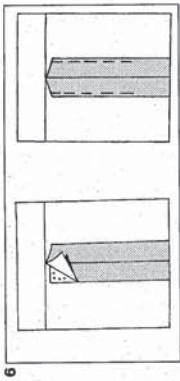


Read **General Directions** on page 1 before you begin.

**PANTS**

**NOTE:** If you prefer a cropped length pant, trim away up to 3" (7.5cm) from lower edge of pants.

1. Pin pants front to back at inner leg seams, matching notches. Stitch seam.
2. With **RIGHT** sides together, stitch center (crotch) seam, matching notches and inner leg seams. To reinforce seam, stitch again over first stitching. Trim seam in curved area to 1/4" (6mm). Press remaining seam open.
3. To ease lower edge of front panel between notches, stitch along seam line and 1/4" (6mm) **INSIDE** seam line, using a long machine-stitch.
4. With **RIGHT** sides together, pin front panel to upper edge of pants front, matching centers. Pull up ease-stitches to fit. Stitch. Press seam toward panel.
5. With **RIGHT** sides together stitch front to back at side seams.



6. To keep elastic from getting stuck in the seam allowances as it's inserted, use fusible web or machine-basting to anchor them to garment within the casing area. Be sure to remove basting after casing is finished.

7. Press 1-1/2" (3.8cm) on upper edge to **INSIDE**, forming casing. Press under 1/4" (6mm) on raw edge. Stitch close to lower edge of casing, leaving an opening to insert elastic.

8. Cut a piece of elastic to fit waist, plus 5" (12.5cm). Insert elastic through casing. Slip ends of elastic together securely. Pull elastic out and fold along lapped ends. Make three more rows of stitching 5/8" (1.5cm) apart. (These stitchings may be ripped out when necessary for growth). Slip elastic back into casing. Stitch opening closed. Distribute fullness evenly.

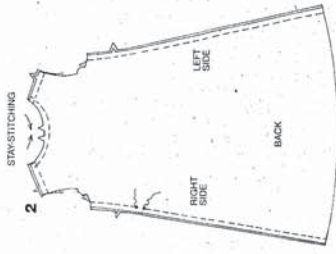
9. Mark length. Press up hem along marking. Mark depth of hem; trim evenly. Press under 1/4" (6mm) on raw edge. Stitch close to inner pressed edge. If you prefer to crease pants, fold leg edges together, matching side and inner leg seams; press.

**DRESS B, C OR TOP D, E**

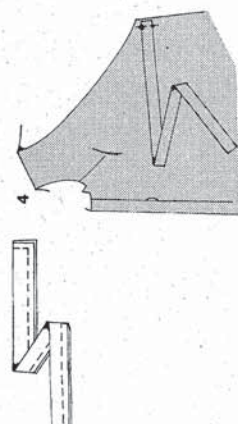
1. Stay-stitch front neck edge 1/2" (1.3cm) from cut edge in direction of arrows. Stay-stitching stays in permanently and helps prevent stretching on curved edge. Stay-stitching will not be shown in the following illustrations. To make dart in front, with **RIGHT** sides together, fold the fabric through the center of the dart, bringing broken lines and small dots together. On **INSIDE**, place pins at **RIGHT** angles to the broken lines. Stitch the dart from wide end to point. **TIP:** To prevent a "bubble" at the point, make the last few stitches right on the fold and leave the thread ends long enough to tie a knot. **DO NOT** back-stitch at the point. Press the dart flat along the stitching to "blend" the stitches, then press dart up.



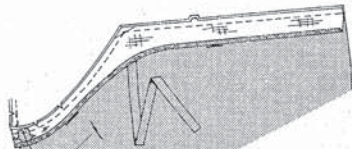
3/4  
STAY-STITCHING



2. Stay-stitch back neck edge. Stitch front to back at shoulder seams.  
Stitch side seams, leaving RIGHT side seam open between large dots. Back-stitch at large dots to reinforce seam.



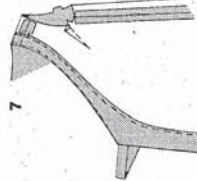
3. Fold tie end in half, lengthwise, with RIGHT sides together. Stitch in 3/8" (1cm) seam, leaving end with small and large dots open.



4. Turn tie end RIGHT side out; press.  
On OUTSIDE, pin tie end to each front edge, matching small and large dots, having raw edges even. Bastle.



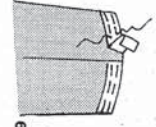
5. Apply fusible interfacing to WRONG side of front and back facing sections, following manufacturer's directions. Stitch shoulder seams of facing sections.  
To EDGE FINISH unnotched edge...stitch 1/4" (6mm) from edge, turn under along stitching and stitch OR zig-zag over the edge OR overlock/serge over the edge.  
With RIGHT sides together, pin facing to garment, matching centers back and shoulder seams. Stitch front and neck edges. Trim seam and corners; clip curves.



6. Understitch press facing away from garment; press seam toward facing. Facing side up, stitch close to seam through facing and seam allowances as far as possible.

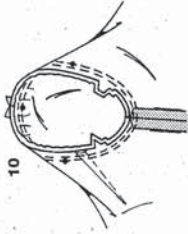


7. Turn facing to INSIDE; press, pressing tie ends out.  
To keep the facing from rolling to OUTSIDE, secure it at the seam allowances by tacking it by hand, stitching in the ditch or using a small piece of fusible web.

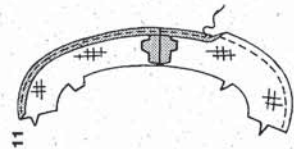


8. To ease top of sleeve between notches, stitch along seam line and 1/4" (6mm) INSIDE seam line, using a long machine-stitch. Stitch underarm seam. Press up hem.  
Press under 1/4" (6mm) on raw edge.  
Stitch close to inner pressed edge.

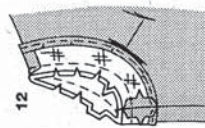
9. FOR OPTIONAL TRIM - Pin lower edge of trim to lower edge of sleeve, turning under ends so that they meet at underarm seam. Stitch close to both edges of trim.



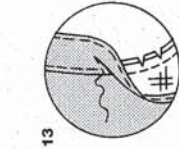
10. Turn sleeve RIGHT side out.  
Hold garment WRONG side out with armhole toward you. With RIGHT sides together, pin sleeve to armhole edge with center small dot at shoulder seam, matching underarm seams and remaining small dots. Pull up ease stitches to fit. To distribute fullness evenly, slide fabric along bobbin threads until there are no puckers or tucks on the seam line. Bastle. Stitch. Stitch again 1/8" (3mm) from first stitching. Trim seam allowance, shrinking out fullness.



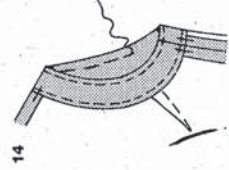
11. Apply fusible interfacing to WRONG side of front and back armhole facings, following manufacturer's directions. Stitch shoulder seam of armhole facing sections, matching double notches. To EDGE FINISH unnotched edge...stitch 1/4" (6mm) from edge, turn under along stitching and stitch OR zig-zag over the edge OR overlock/serge over the edge.



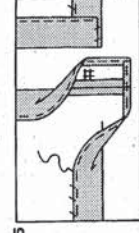
12. Stitch underarm seam. With RIGHT sides together, stitch facing to armhole edge, matching shoulder and underarm seams. Trim seam; clip curves.



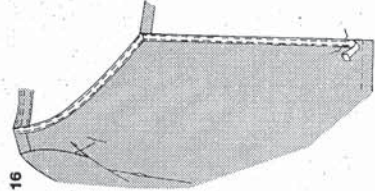
13. To understitch press facing away from garment; press seam toward facing. Facing side up, stitch close to seam through facing and seam allowances.



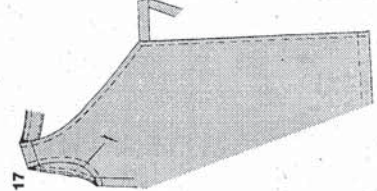
14. Turn facing to INSIDE; press.  
To keep the facing from rolling to OUTSIDE, secure it at the seam allowances by tacking it by hand, stitching in the ditch or using a small piece of fusible web.  
On OUTSIDE, top-stitch 1/4" (6mm) from finished armhole edge.



15. Mark length. Open out front facings.  
Press up hem along marking.  
Mark depth of hem; trim evenly.  
To EDGE FINISH the raw edge...stitch under 1/4" (6mm), zig-zag, OR overlock/serge. Slip-stitch, easing in fullness.  
Press facings to INSIDE; slip-stitch to hem.



16. FOR OPTIONAL TRIM B AND E - Pin ribbon or braid to garment front and neck edge, turning under ends of trim at lower edge and folding out fullness at corners, as shown. Stitch close to both long edges of trim.



17. FOR GARMENTS WITHOUT TRIM - On OUTSIDE, top-stitch 1/4" (6mm) from front and neck edge.

FOR ALL GARMENTS - Insert LEFT tie end through opening in RIGHT side seam. Tie tie ends at center back or side edge, as shown on front of envelope.

# Explore Litigation Insights

Docket Alarm provides insights to develop a more informed litigation strategy and the peace of mind of knowing you're on top of things.

## Real-Time Litigation Alerts



Keep your litigation team up-to-date with **real-time alerts** and advanced team management tools built for the enterprise, all while greatly reducing PACER spend.

Our comprehensive service means we can handle Federal, State, and Administrative courts across the country.

## Advanced Docket Research



With over 230 million records, Docket Alarm's cloud-native docket research platform finds what other services can't. Coverage includes Federal, State, plus PTAB, TTAB, ITC and NLRB decisions, all in one place.

Identify arguments that have been successful in the past with full text, pinpoint searching. Link to case law cited within any court document via Fastcase.

## Analytics At Your Fingertips



Learn what happened the last time a particular judge, opposing counsel or company faced cases similar to yours.

Advanced out-of-the-box PTAB and TTAB analytics are always at your fingertips.

## API

Docket Alarm offers a powerful API (application programming interface) to developers that want to integrate case filings into their apps.

## LAW FIRMS

Build custom dashboards for your attorneys and clients with live data direct from the court.

Automate many repetitive legal tasks like conflict checks, document management, and marketing.

## FINANCIAL INSTITUTIONS

Litigation and bankruptcy checks for companies and debtors.

## E-DISCOVERY AND LEGAL VENDORS

Sync your system to PACER to automate legal marketing.