

(54) **METHOD, SYSTEM AND COMPUTER READABLE MEDIUM FOR ADDRESSING HANDLING FROM A COMPUTER PROGRAM**

(75) Inventor: **Atle Hedloy, Stabekk (NO)**

(73) Assignee: **Arendi AS, Stabekk (NO)**

(*) Notice: Subject to any disclaimer, the term of this patent is extended or adjusted under 35 U.S.C. 154(b) by 0 days.

(21) Appl. No.: **09/189,626**

(22) Filed: **Nov. 10, 1998**

(30) **Foreign Application Priority Data**

Sep. 3, 1998 (NO) 984066

(51) **Int. Cl.⁷** **G06F 17/00**

(52) **U.S. Cl.** **345/339; 345/968; 707/530**

(58) **Field of Search** 345/326, 333, 345/335, 336, 339, 347, 348, 968, 354, 356; 707/1, 3, 500, 503, 505, 507, 530, 501, 513, 515

(56) **References Cited**

U.S. PATENT DOCUMENTS

5,226,117	7/1993	Miklos	345/356
5,331,555	7/1994	Hashimoto et al.	707/531
5,416,901	5/1995	Torres	345/348
5,491,783	2/1996	Douglas et al.	345/335
5,491,784	2/1996	Douglas et al.	345/352
5,500,859	3/1996	Sharma et al.	370/468
5,530,853	6/1996	Schell et al.	701/1
5,546,447	8/1996	Skarbo et al.	379/142
5,606,712	2/1997	Hidaka	712/1
5,640,565	6/1997	Dickinson	707/103
5,666,502	9/1997	Capps	345/352
5,708,804	1/1998	Goodwin et al.	707/3

5,724,597	*	3/1998	Cuthbertson et al.	707/531
5,732,229	*	3/1998	Dickinson	345/334
5,761,656		6/1998	Ben-Shachar	707/4
5,799,302	*	8/1998	Johnson et al.	707/7
5,805,886		9/1998	Skarbo et al.	709/318
5,826,257		10/1998	Snelling, Jr.	707/4
5,835,089		11/1998	Skarbo et al.	345/335
5,859,636		1/1999	Pandit	345/335
5,873,107	*	2/1999	Borovoy et al.	707/501
6,026,398	*	2/2000	Brown et al.	707/5
6,085,201	*	7/2000	Iso	707/505

* cited by examiner

Primary Examiner—Crescelle N. dela Torre

(74) *Attorney, Agent, or Firm*—Oblon, Spivak, McClelland, Maier & Neustadt, P.C.

(57) **ABSTRACT**

A method, system and computer readable medium for providing a function item, such as a key, button, icon, or menu, tied to a user operation in a computer, whereby a single click on the function item in a window or program on a computer screen, or one single selection in a menu in a program, initiates retrieval of name and addresses and/or other person or company related information, while the user works simultaneously in another program, e.g., a word processor. The click on the function item initiates a program connected to the button to search a database or file available on or through the computer, containing the person, company or address related data, in order to look up data corresponding to what the user types, or partly typed, e.g., name and/or address in the word processor, the correct data from the database, data related to the typed data, e.g., the name of the person, company, or the traditional or electronic address, or other person, or company, or address related data, and alternatively the persons, companies, or addresses, are displayed and possibly entered into the word processor, if such related data exists.

79 Claims, 17 Drawing Sheets

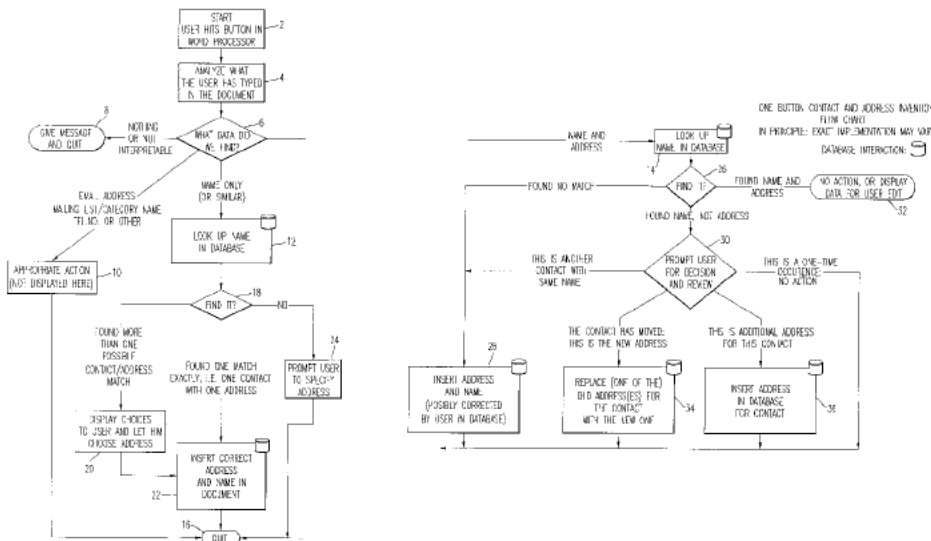
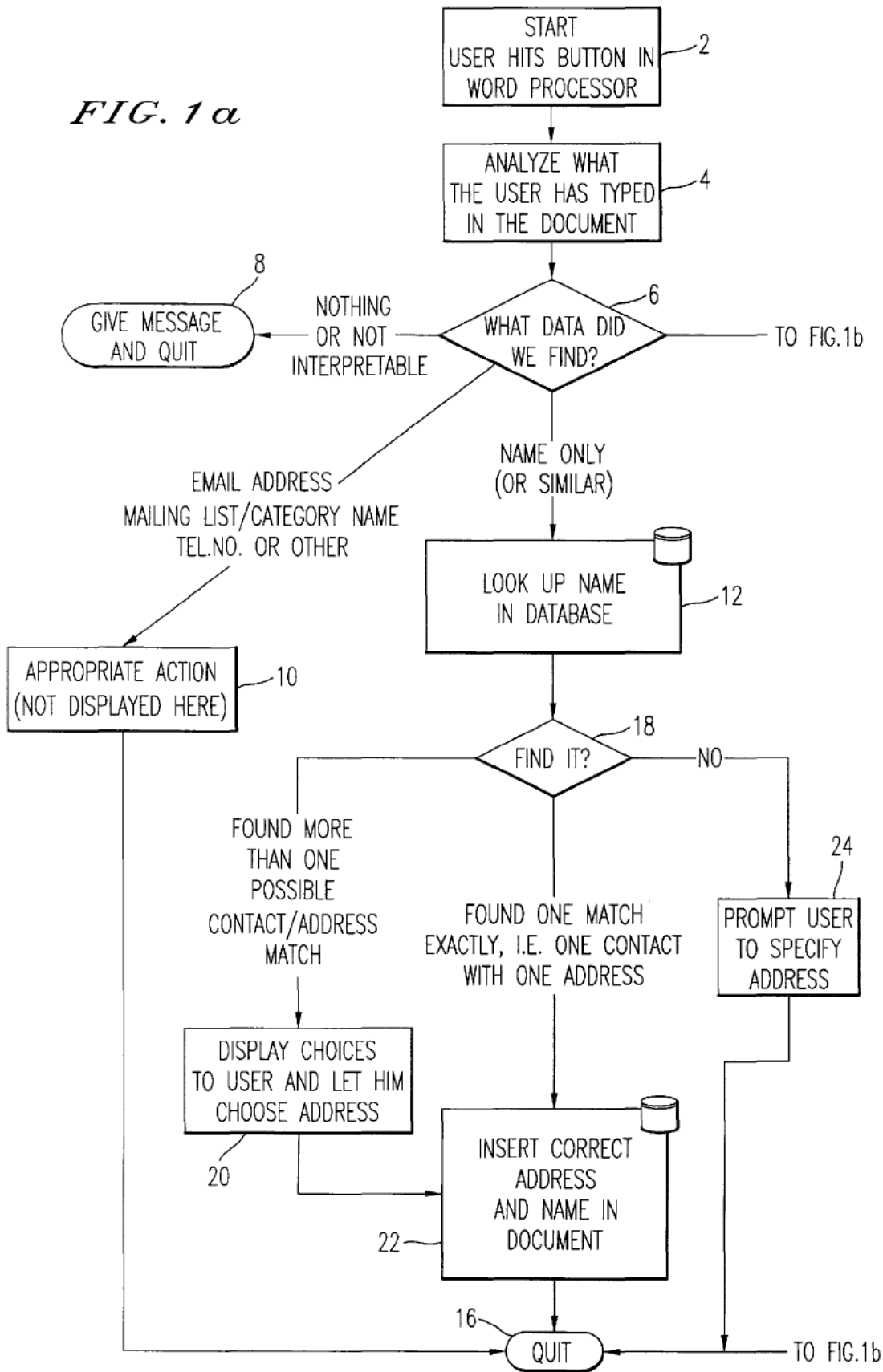


FIG. 1a



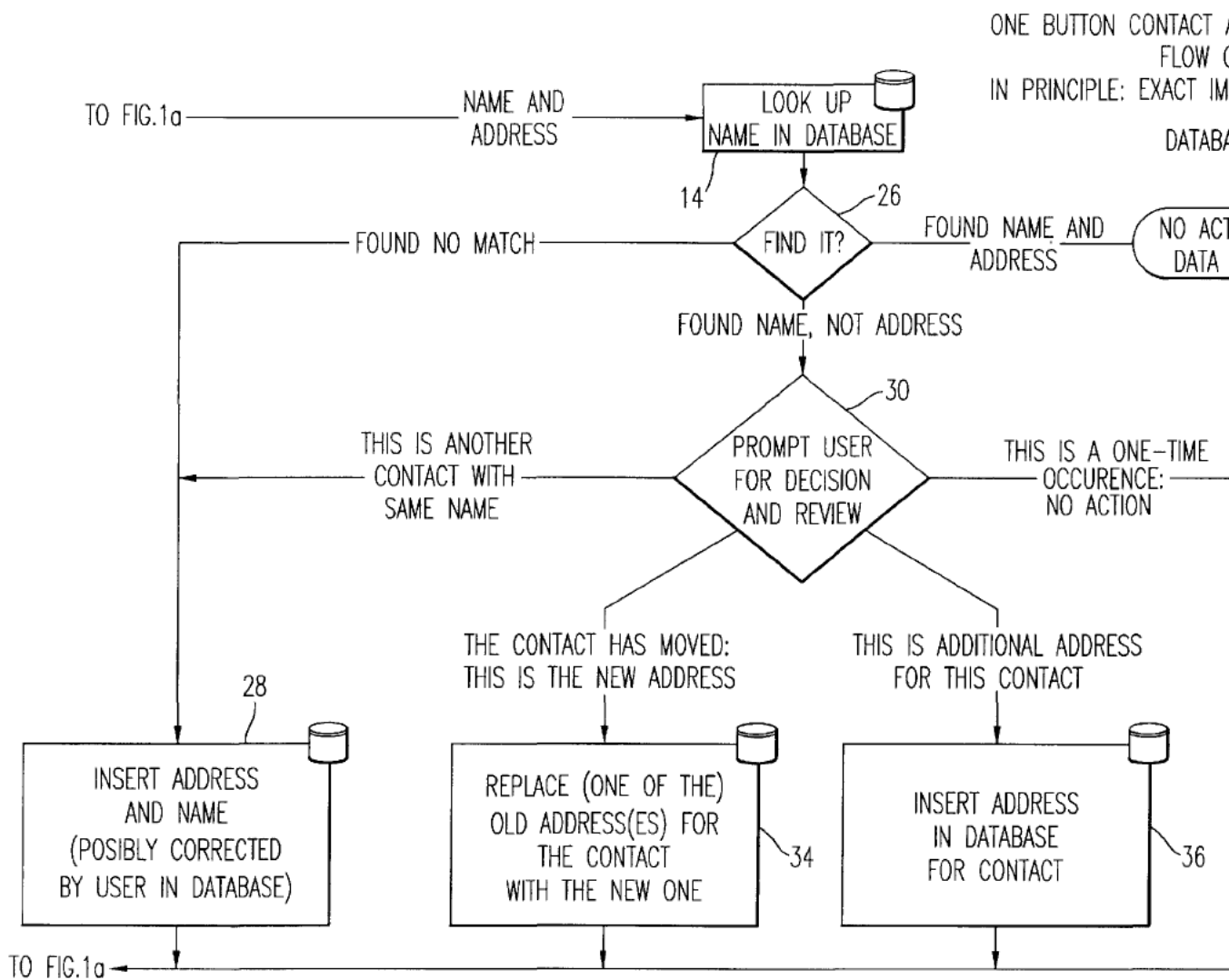
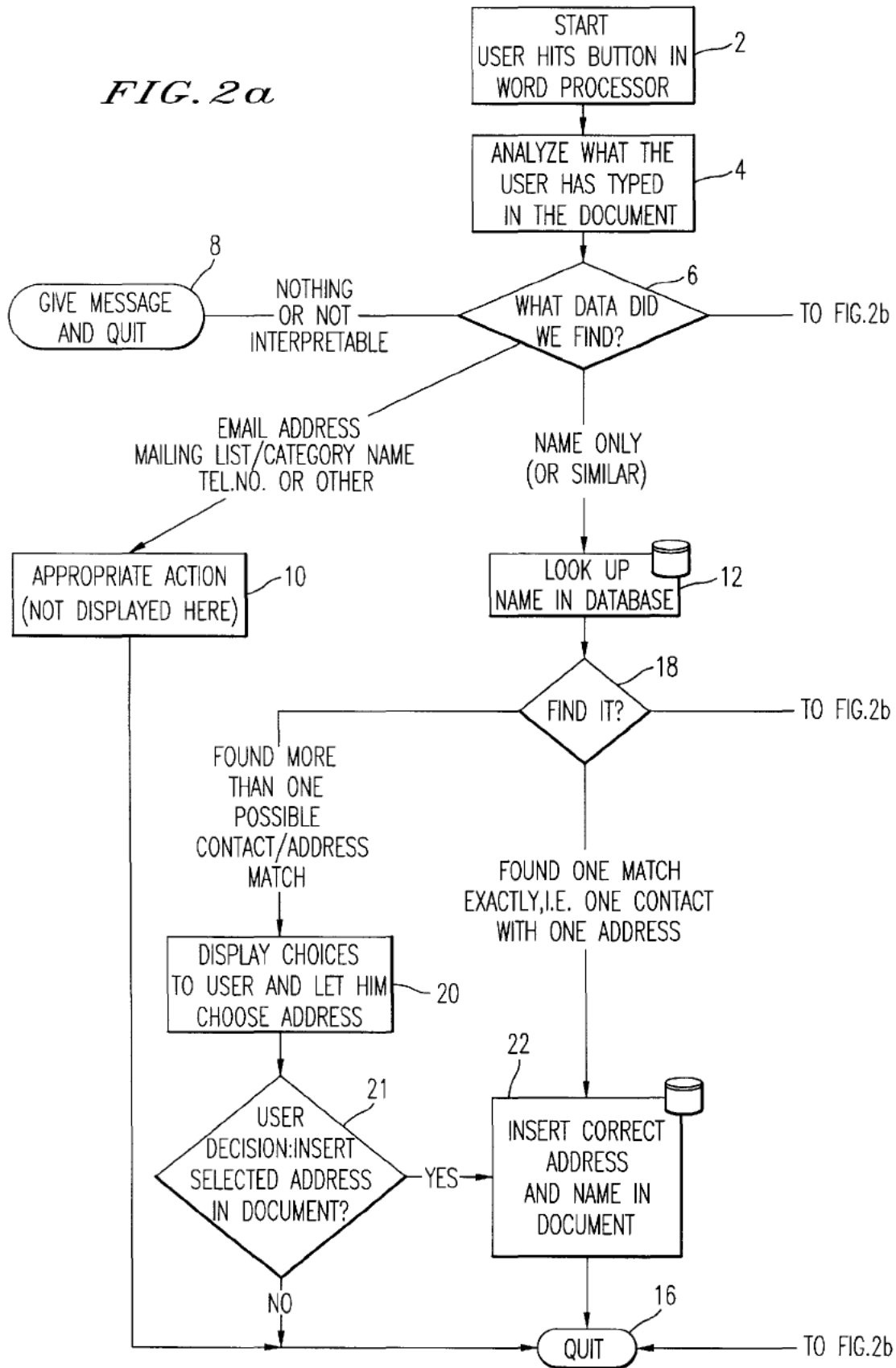
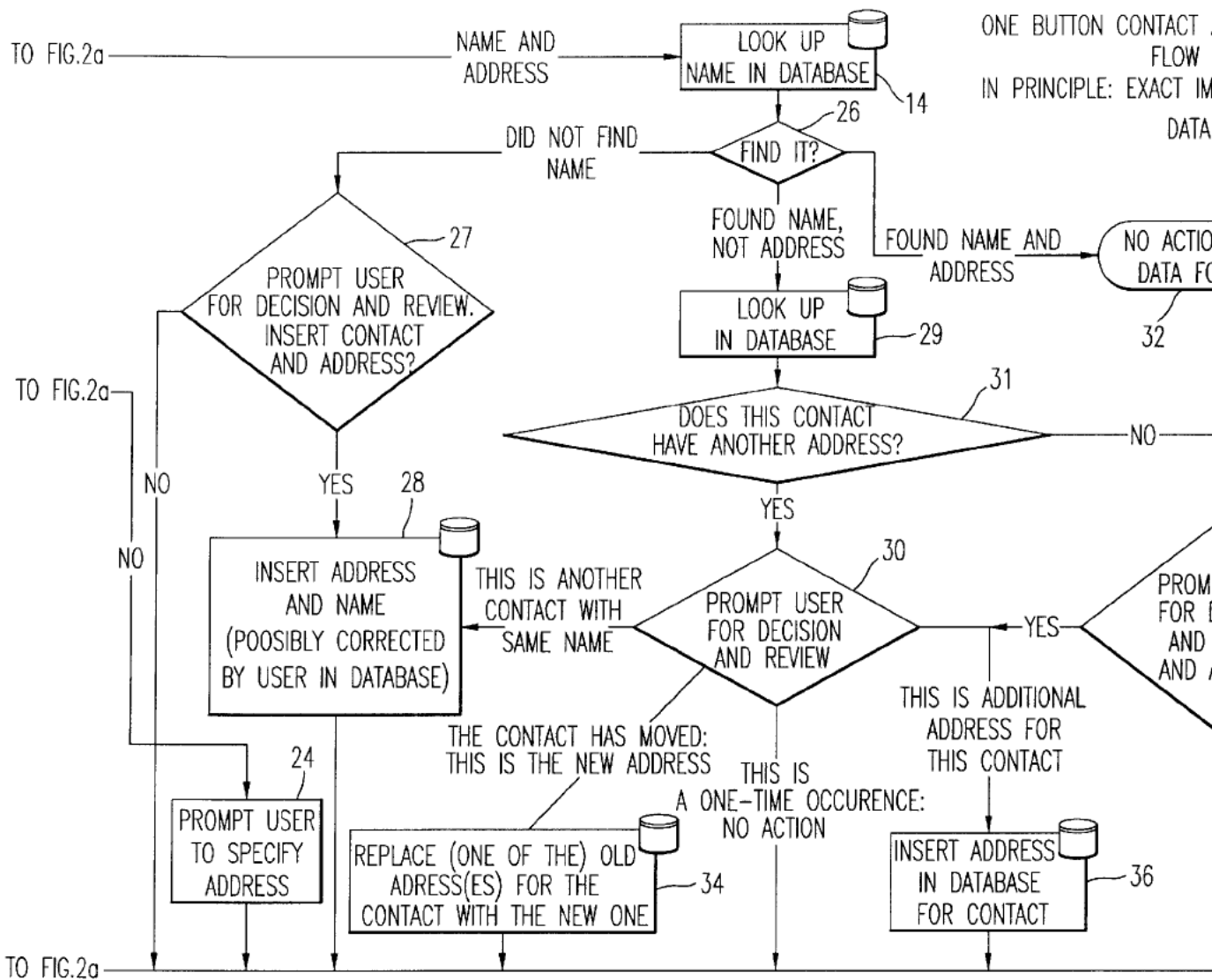


FIG. 2a





Explore Litigation Insights

Docket Alarm provides insights to develop a more informed litigation strategy and the peace of mind of knowing you're on top of things.

Real-Time Litigation Alerts



Keep your litigation team up-to-date with **real-time alerts** and advanced team management tools built for the enterprise, all while greatly reducing PACER spend.

Our comprehensive service means we can handle Federal, State, and Administrative courts across the country.

Advanced Docket Research



With over 230 million records, Docket Alarm's cloud-native docket research platform finds what other services can't. Coverage includes Federal, State, plus PTAB, TTAB, ITC and NLRB decisions, all in one place.

Identify arguments that have been successful in the past with full text, pinpoint searching. Link to case law cited within any court document via Fastcase.

Analytics At Your Fingertips



Learn what happened the last time a particular judge, opposing counsel or company faced cases similar to yours.

Advanced out-of-the-box PTAB and TTAB analytics are always at your fingertips.

API

Docket Alarm offers a powerful API (application programming interface) to developers that want to integrate case filings into their apps.

LAW FIRMS

Build custom dashboards for your attorneys and clients with live data direct from the court.

Automate many repetitive legal tasks like conflict checks, document management, and marketing.

FINANCIAL INSTITUTIONS

Litigation and bankruptcy checks for companies and debtors.

E-DISCOVERY AND LEGAL VENDORS

Sync your system to PACER to automate legal marketing.