

[54] **SEARCH SYSTEM WHICH CONTINUOUSLY DISPLAYS SEARCH TERMS DURING SCROLLING AND SELECTIONS OF INDIVIDUALLY DISPLAYED DATA SETS**

[75] **Inventors:** Nancy P. Cochran, 35 Main St., Nyack, N.Y. 10960; Susan Byrnes, East Hartford, Conn.

[73] **Assignee:** Nancy P. Cochran, Nyack, N.Y.

[21] **Appl. No.:** 909,293

[22] **Filed:** Sep. 19, 1986

[51] **Int. Cl.<sup>4</sup>** ..... G06F 3/14

[52] **U.S. Cl.** ..... 364/300; 364/518

[58] **Field of Search** .....  
 364/200 MS File:900 MS File, 518; 340/712

[56] **References Cited**

**U.S. PATENT DOCUMENTS**

3,531,795	9/1970	Gassler	340/324
3,670,310	6/1972	Bharwani et al.	364/200
3,792,613	2/1974	Couture	340/366
3,956,739	5/1976	Ophir	364/900
3,974,496	8/1976	Aptroot-Soloway	364/518
4,001,807	1/1977	Dallimonti	364/518
4,125,868	11/1978	Hruby et al.	364/900
4,194,349	3/1980	Lane	340/721
4,221,003	9/1980	Chang et al.	364/900
4,278,973	7/1981	Hughes et al.	340/721
4,342,085	7/1982	Glückman et al.	364/300
4,384,329	5/1983	Rosenbaum et al.	364/300
4,386,410	5/1983	Pandya et al.	364/518
4,412,294	10/1983	Watts et al.	364/518
4,417,239	11/1983	Demke et al.	340/709
4,419,756	12/1983	Cheng Quispe et al.	364/900
4,453,217	6/1984	Boivie	364/300
4,464,652	8/1984	Lapson et al.	340/716
4,531,186	7/1985	Knapman	364/300
4,533,910	8/1985	Sukonick et al.	340/721
4,535,420	8/1985	Fung	364/900
4,550,386	10/1985	Hirosawa et al.	364/900
4,554,631	11/1985	Reddington	364/300
4,566,065	1/1986	Toth	364/300

4,580,218	4/1986	Raye	364/300
4,586,035	4/1986	Baker et al.	340/365 UL
4,586,036	4/1986	Thomason et al.	340/720
4,647,916	3/1987	Boughton	340/724
4,648,062	3/1987	Johnson et al.	340/712
4,656,603	4/1987	Dunn	364/900
4,694,406	9/1987	Shibui et al.	364/518
4,723,209	2/1988	Hernandez	364/518
4,736,308	4/1988	Heckel	364/518
4,752,889	6/1988	Rappaport et al.	364/513
4,754,326	6/1988	Kram et al.	364/900
4,763,356	8/1988	Day, Jr. et al.	340/712
4,799,083	1/1989	Knodt	355/3 R

**Primary Examiner**—Raulfe B. Zache

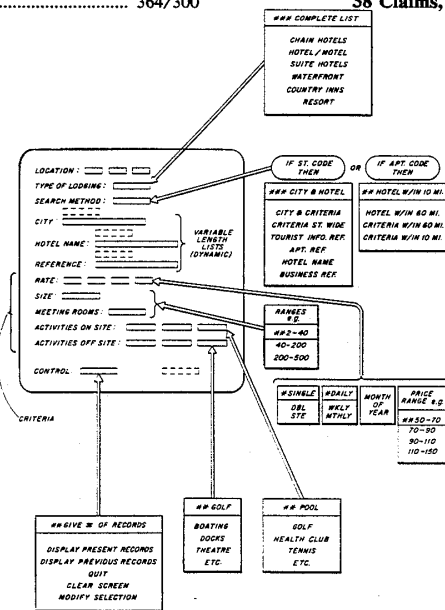
**Assistant Examiner**—Eric Coleman

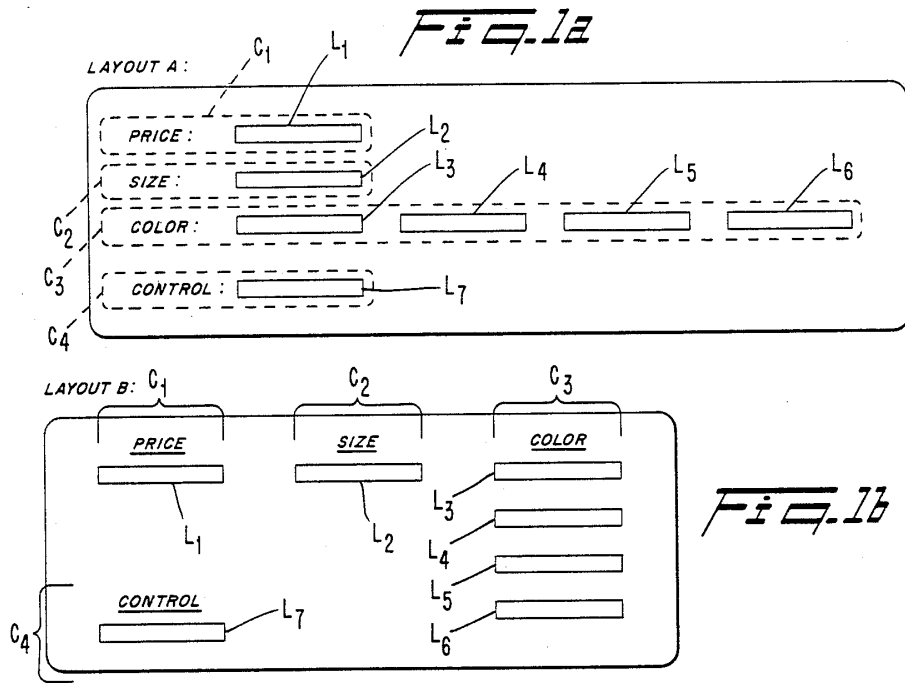
**Attorney, Agent, or Firm**—Fleit, Jacobson, Cohn, Price, Holman & Stern

[57] **ABSTRACT**

The method of variably displaying search terms includes continuously displaying the names of categories on a video terminal screen. When the cursor is adjacent a category, one data set or search term is displayed, that search term being one of a plurality of terms in a list associated with the particular category. The user displays another term from the list by actuating a scrolling control key input. To select a desired term and move to the next category, the user actuates a select control key input. Therefore, the display system utilizes only two control inputs to select a plurality of terms for a plurality of categories. One list of terms represents control commands that control, among other things, the output of data from the system. One technique of formulating the list is to obtain the data fields from a particular field, corresponding to the category, from all records in a data base. The retrieved data fields are then used as search terms in this dynamically formed list. The terms can also be grouped in fixed or static lists. A routine is used to segment or subdivide the data base search for the dynamic list or to subdivide the static list.

**38 Claims, 11 Drawing Sheets**





*Fig. 1b*

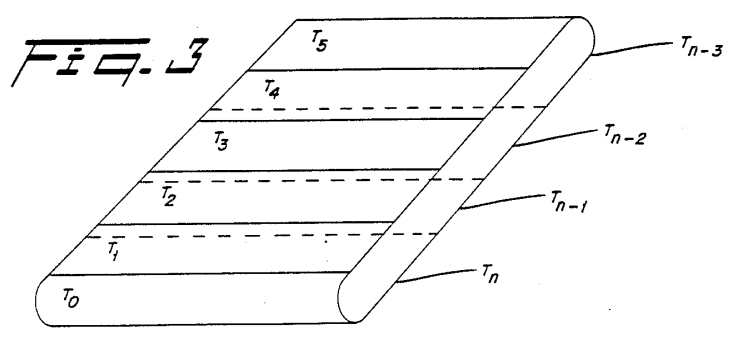
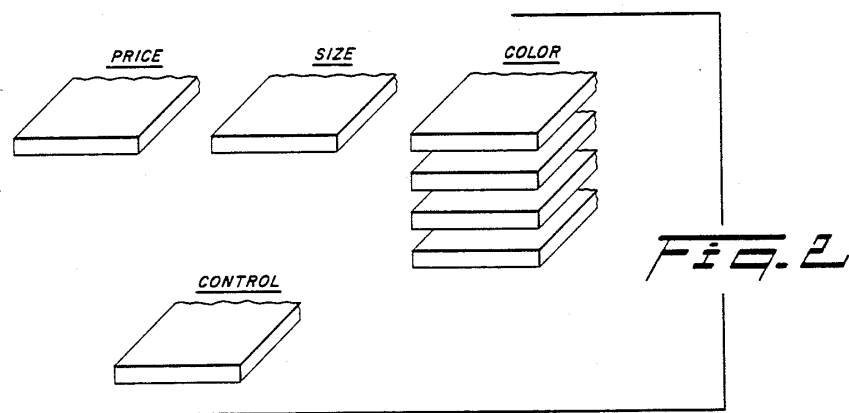
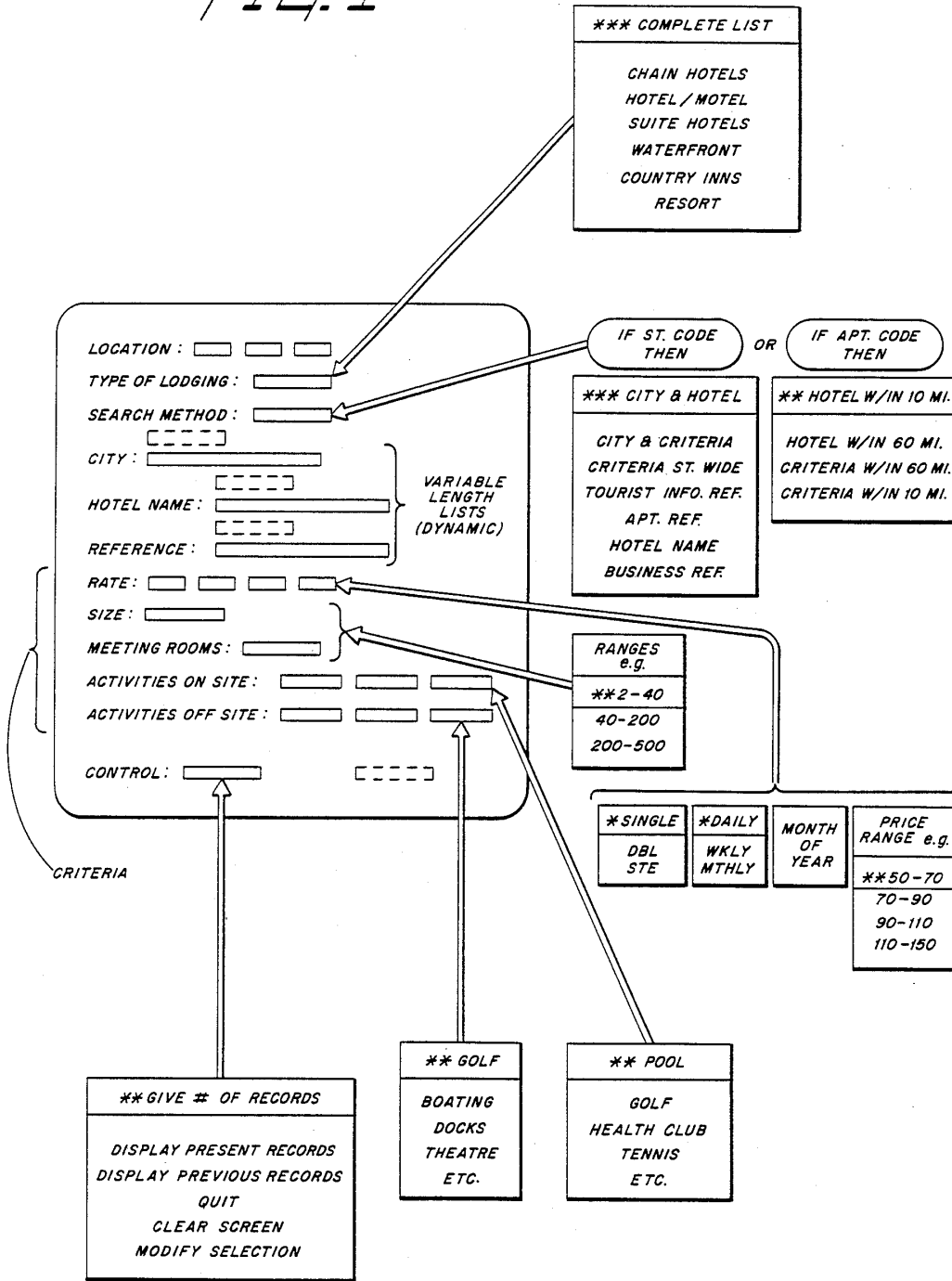


FIG. 4



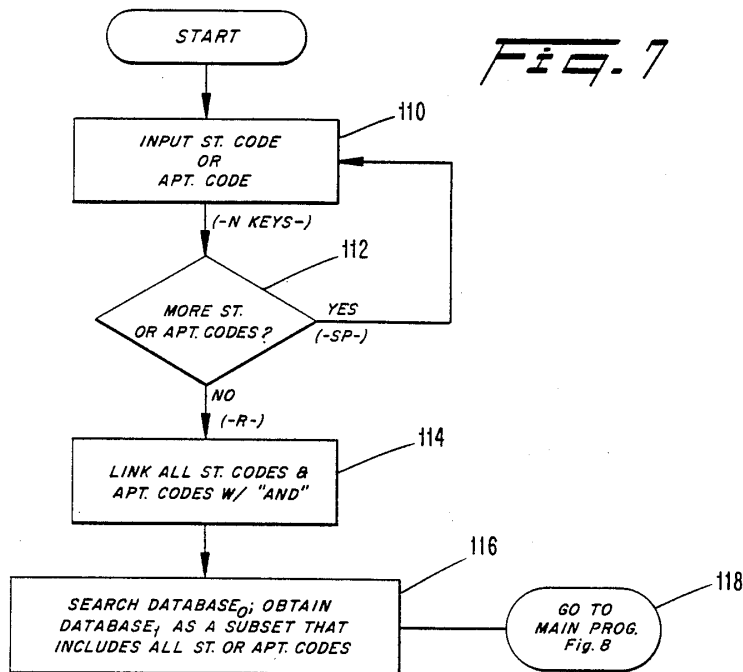
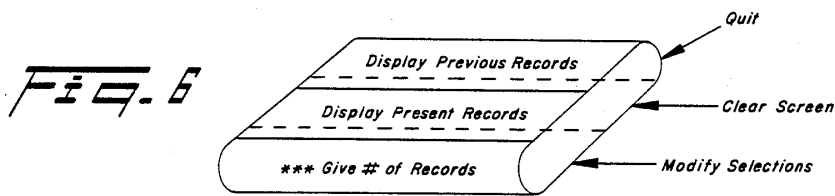
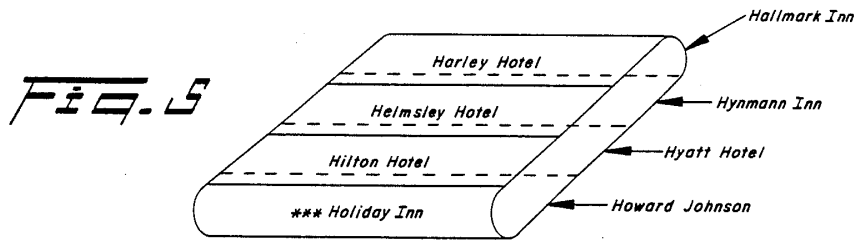
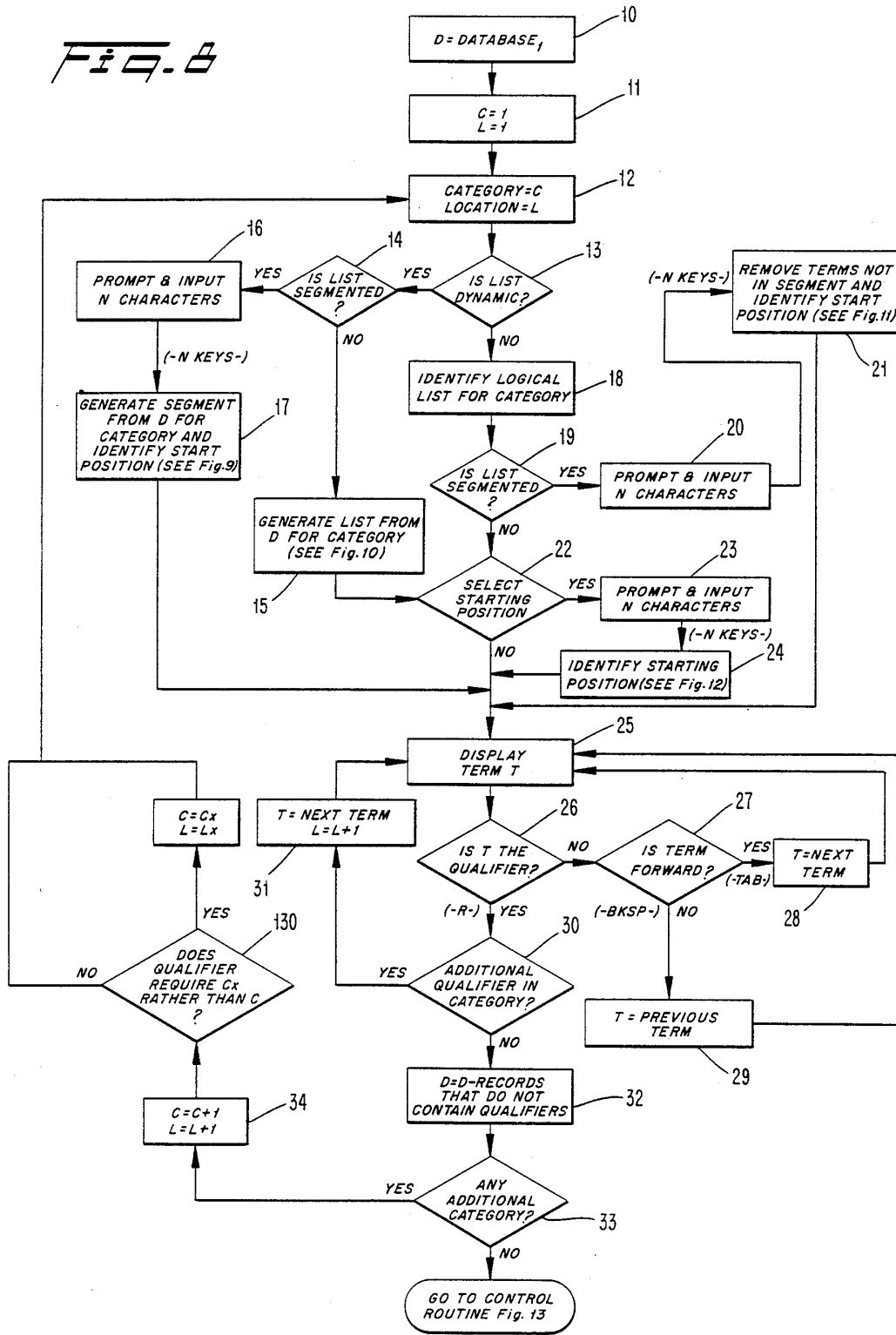


Fig. 8



# Explore Litigation Insights

Docket Alarm provides insights to develop a more informed litigation strategy and the peace of mind of knowing you're on top of things.

## Real-Time Litigation Alerts



Keep your litigation team up-to-date with **real-time alerts** and advanced team management tools built for the enterprise, all while greatly reducing PACER spend.

Our comprehensive service means we can handle Federal, State, and Administrative courts across the country.

## Advanced Docket Research



With over 230 million records, Docket Alarm's cloud-native docket research platform finds what other services can't. Coverage includes Federal, State, plus PTAB, TTAB, ITC and NLRB decisions, all in one place.

Identify arguments that have been successful in the past with full text, pinpoint searching. Link to case law cited within any court document via Fastcase.

## Analytics At Your Fingertips



Learn what happened the last time a particular judge, opposing counsel or company faced cases similar to yours.

Advanced out-of-the-box PTAB and TTAB analytics are always at your fingertips.

## API

Docket Alarm offers a powerful API (application programming interface) to developers that want to integrate case filings into their apps.

## LAW FIRMS

Build custom dashboards for your attorneys and clients with live data direct from the court.

Automate many repetitive legal tasks like conflict checks, document management, and marketing.

## FINANCIAL INSTITUTIONS

Litigation and bankruptcy checks for companies and debtors.

## E-DISCOVERY AND LEGAL VENDORS

Sync your system to PACER to automate legal marketing.