

United States Patent [19]

[11] **Patent Number:** **5,779,566**

Wilens

[45] **Date of Patent:** **Jul. 14, 1998**

[54] **HANDHELD GOLF REPORTING AND STATISTICAL ANALYSIS APPARATUS AND METHOD**

5,127,044	6/1992	Bonito et al.	473/407
5,245,537	9/1993	Barber	364/410
5,270,689	12/1993	Hermann	345/145
5,294,110	3/1994	Jenkins et al.	473/407
5,319,548	7/1994	Germain	364/410
5,364,093	11/1994	Huston et al.	473/407
5,458,425	10/1995	Torok	400/486
5,469,175	11/1995	Boman	473/407

[76] **Inventor:** Peter S. Wilens, 2331 Cheswick, Troy, Mich. 48084

[21] **Appl. No.:** 392,280

[22] **Filed:** Feb. 22, 1995

Primary Examiner—Jessica Harrison
Assistant Examiner—Mark A. Sager
Attorney, Agent, or Firm—Young & Basile, P.C.

Related U.S. Application Data

[63] Continuation-in-part of Ser. No. 58,074, May 4, 1993, abandoned.

[51] **Int. Cl.⁶** G06F 15/44; A63F 9/22

[52] **U.S. Cl.** 473/407; 473/409; 473/131

[58] **Field of Search** 473/150-156, 473/140-141, 407, 409; 364/410-411, 709.01-709.02, 709.1, 709.11, 709.12; 345/123, 121, 124, 125, 169, 173, 145, 146; 340/323 R; 273/DIG. 26, DIG. 28; 235/145 R, 145 A; 341/22, 35; 400/100, 486

[57] **ABSTRACT**

A handheld computerized golf data recording, reporting and advising unit, and a method for its operation. The unit itself is a small, comfortably handheld computerized unit with a generally writable display and a simplified key control panel to enter and retrieve data. Using the key control panel, a golfer can selectively retrieve a number of pre-formatted screens corresponding to pre-game, game-interactive and post-game recording and reporting of golf facts statistics and general golf knowledge. The pre-game screens contain data input fields having predetermined sets of values a user selects to provide information required by the game-interactive and game-reporting screens and algorithms to process, store and report information. The information entered in the pre-game and game-interactive mode is automatically stored in the memory of the unit and subsequently formatted into one or more statistical reports upon request by the user.

[56] **References Cited**

U.S. PATENT DOCUMENTS

4,714,919	12/1987	Foster	345/123
4,744,046	5/1988	Foster	345/123
4,974,183	11/1990	Miller	400/486
4,977,503	12/1990	Rudnick et al.	364/410
5,006,001	4/1991	Vulcano	400/486

37 Claims, 36 Drawing Sheets

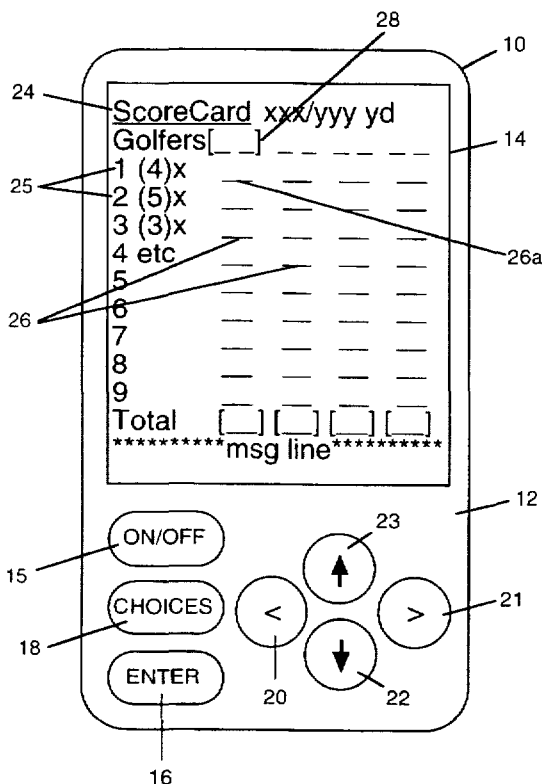


FIG. 1

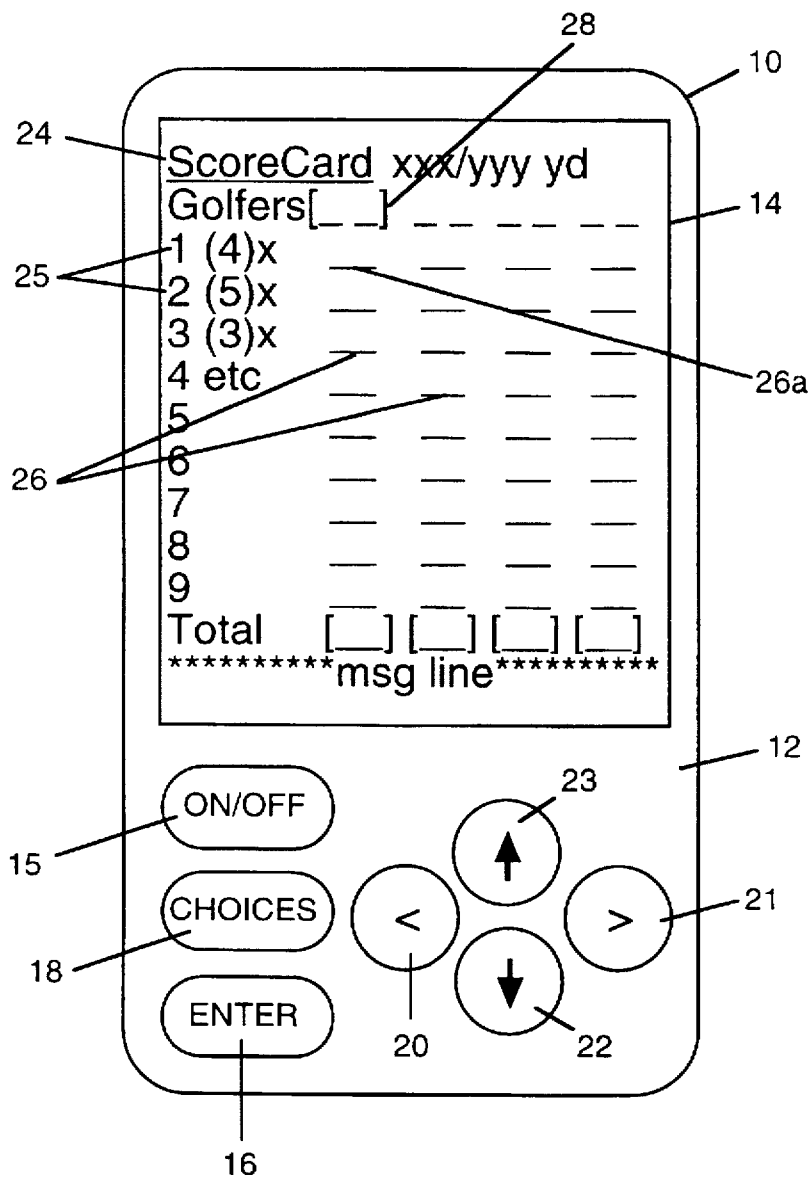


FIG. 2

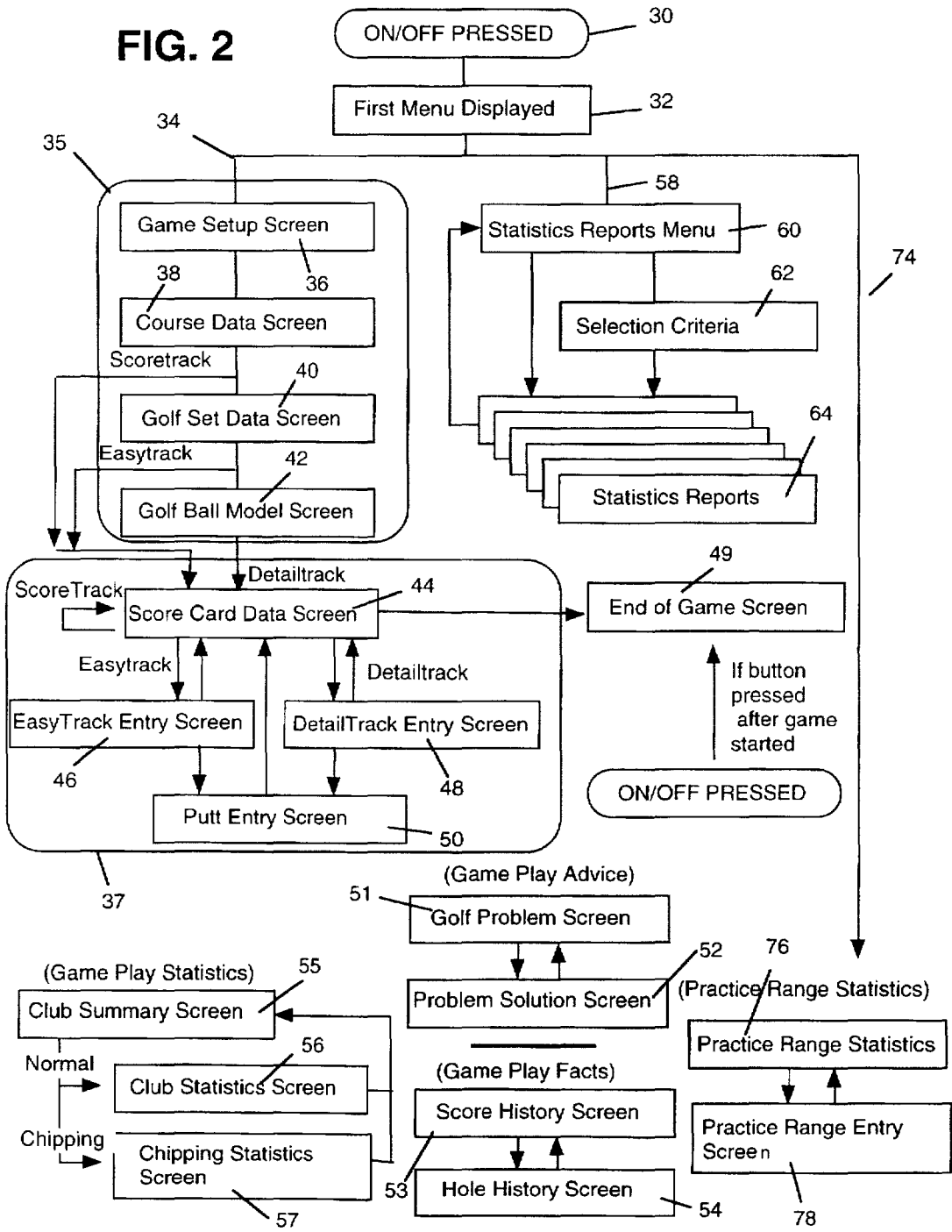


FIG. 3

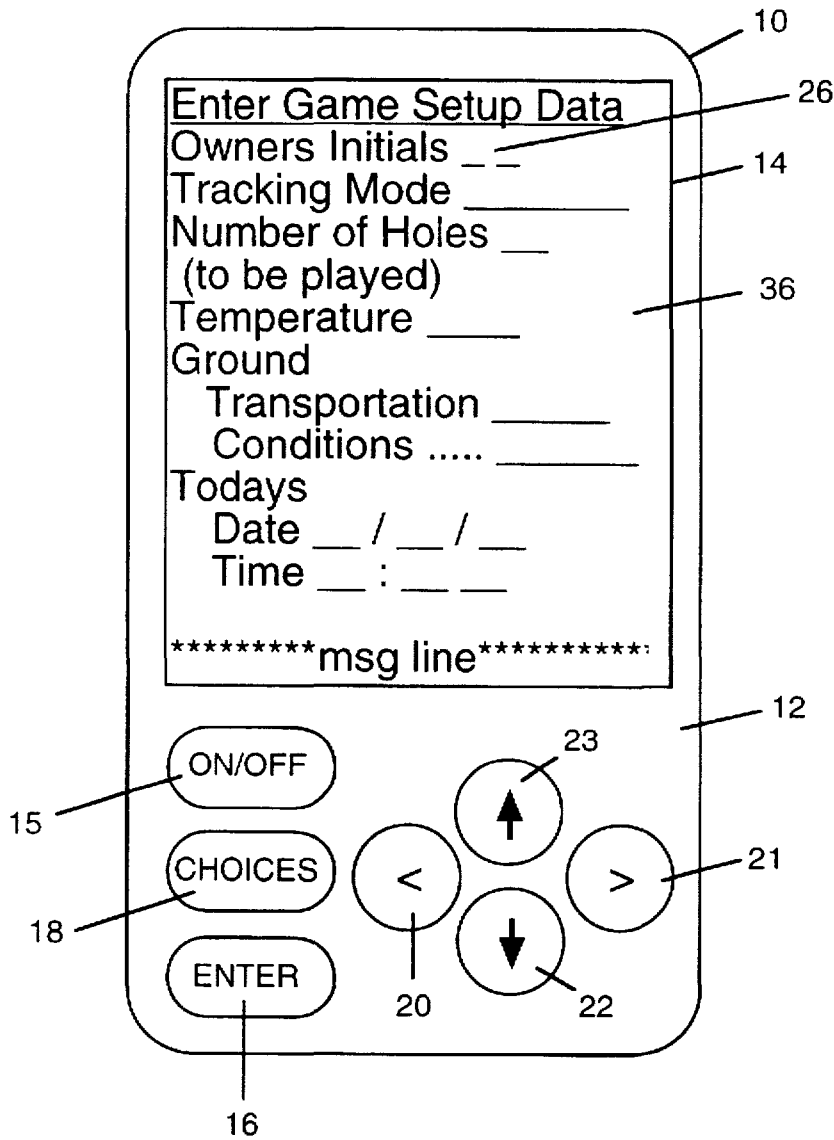
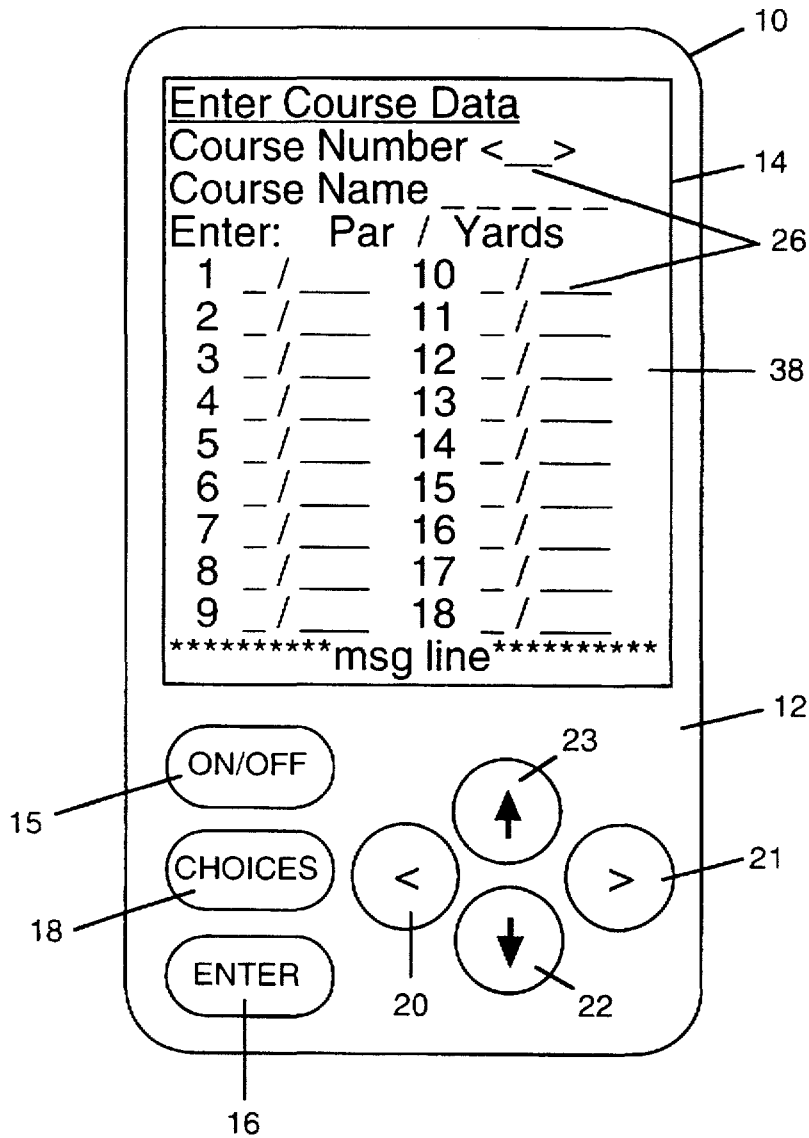


FIG. 4



Explore Litigation Insights

Docket Alarm provides insights to develop a more informed litigation strategy and the peace of mind of knowing you're on top of things.

Real-Time Litigation Alerts



Keep your litigation team up-to-date with **real-time alerts** and advanced team management tools built for the enterprise, all while greatly reducing PACER spend.

Our comprehensive service means we can handle Federal, State, and Administrative courts across the country.

Advanced Docket Research



With over 230 million records, Docket Alarm's cloud-native docket research platform finds what other services can't. Coverage includes Federal, State, plus PTAB, TTAB, ITC and NLRB decisions, all in one place.

Identify arguments that have been successful in the past with full text, pinpoint searching. Link to case law cited within any court document via Fastcase.

Analytics At Your Fingertips



Learn what happened the last time a particular judge, opposing counsel or company faced cases similar to yours.

Advanced out-of-the-box PTAB and TTAB analytics are always at your fingertips.

API

Docket Alarm offers a powerful API (application programming interface) to developers that want to integrate case filings into their apps.

LAW FIRMS

Build custom dashboards for your attorneys and clients with live data direct from the court.

Automate many repetitive legal tasks like conflict checks, document management, and marketing.

FINANCIAL INSTITUTIONS

Litigation and bankruptcy checks for companies and debtors.

E-DISCOVERY AND LEGAL VENDORS

Sync your system to PACER to automate legal marketing.