

[54] **REVERSING APPARATUS FOR POWERED VEHICLE DOOR SYSTEMS**
 [75] **Inventor:** Lawrence H. Zuckerman, Easton, Pa.
 [73] **Assignee:** Masco Industries, Inc., Taylor, Mich.
 [21] **Appl. No.:** 497,546
 [22] **Filed:** Mar. 22, 1990
 [51] **Int. Cl.⁵** E05F 15/02
 [52] **U.S. Cl.** 49/28; 49/214; 49/360
 [58] **Field of Search** 49/214, 213, 362, 360, 49/28, 29, 30

4,640,050 2/1987 Yamagishi et al. .
 4,644,692 2/1987 Schindehutte .
 4,644,693 2/1987 Wang .
 4,686,598 8/1987 Herr 49/28 X
 4,775,178 10/1988 Boyko .
 4,831,509 5/1989 Jones et al. 49/28 X
 4,842,313 6/1989 Boyko et al. .
 4,862,640 9/1989 Boyko et al. .
 4,887,390 12/1989 Boyko et al. .

FOREIGN PATENT DOCUMENTS

0017515 10/1980 European Pat. Off. .
 3523261 1/1986 Fed. Rep. of Germany .
 2578078 8/1986 France .
 620336 3/1949 United Kingdom .

[56] **References Cited**
U.S. PATENT DOCUMENTS

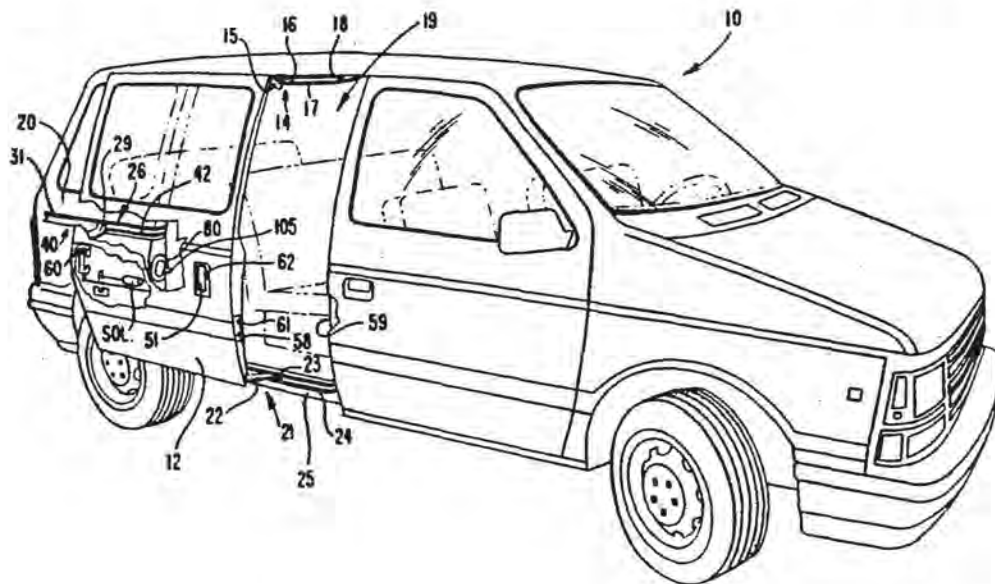
2,628,091 2/1953 Rappl .
 3,069,151 12/1962 Cook et al. .
 3,124,344 3/1964 Mano .
 3,141,662 7/1964 Wise .
 3,202,414 8/1965 Simmons et al. .
 3,344,554 10/1967 Misaka et al. .
 3,398,484 8/1968 Katsumura et al. .
 3,479,767 11/1969 Gardner et al. .
 3,653,154 4/1972 Hayday .
 3,844,062 10/1974 Daugirdal 49/214 X
 3,893,260 7/1975 Cadiou .
 4,121,382 10/1978 Dietrich et al. .
 4,183,177 1/1980 Kurdziel .
 4,314,692 2/1982 Brauer et al. .
 4,422,521 12/1983 Mochida .
 4,462,185 7/1984 Shibuki et al. .
 4,489,640 12/1984 Olson .
 4,530,185 7/1985 Moriya et al. .
 4,546,845 10/1985 Meyer et al. .
 4,549,369 10/1985 Foley, Jr. .
 4,612,729 9/1986 Sato .
 4,617,757 10/1986 Kagiya et al. .
 4,621,223 11/1986 Murakami et al. 49/28 X

Primary Examiner—Philip C. Kannan
Attorney, Agent, or Firm—Harness, Dickey & Pierce

[57] **ABSTRACT**

An obstruction detecting reversing apparatus is disclosed for a motor driven device, such as a powered vehicle door or window system, wherein the device undergoes varying loads, and consequently varying current draws, during normal operation. In order to accurately detect the presence of an obstruction, in light of such normally varying currents, the apparatus circuit logic monitors instantaneous motor current and compares it with the time average of motor current over a very short preceding time interval, which "tracks" normal current draw in order to sense an obstruction-caused rise in motor current at virtually any stage of the door closing operation, and thus also accommodates normal changes in current draw caused by different gravity effects when the device is oriented in different grade-caused orientations.

18 Claims, 16 Drawing Sheets



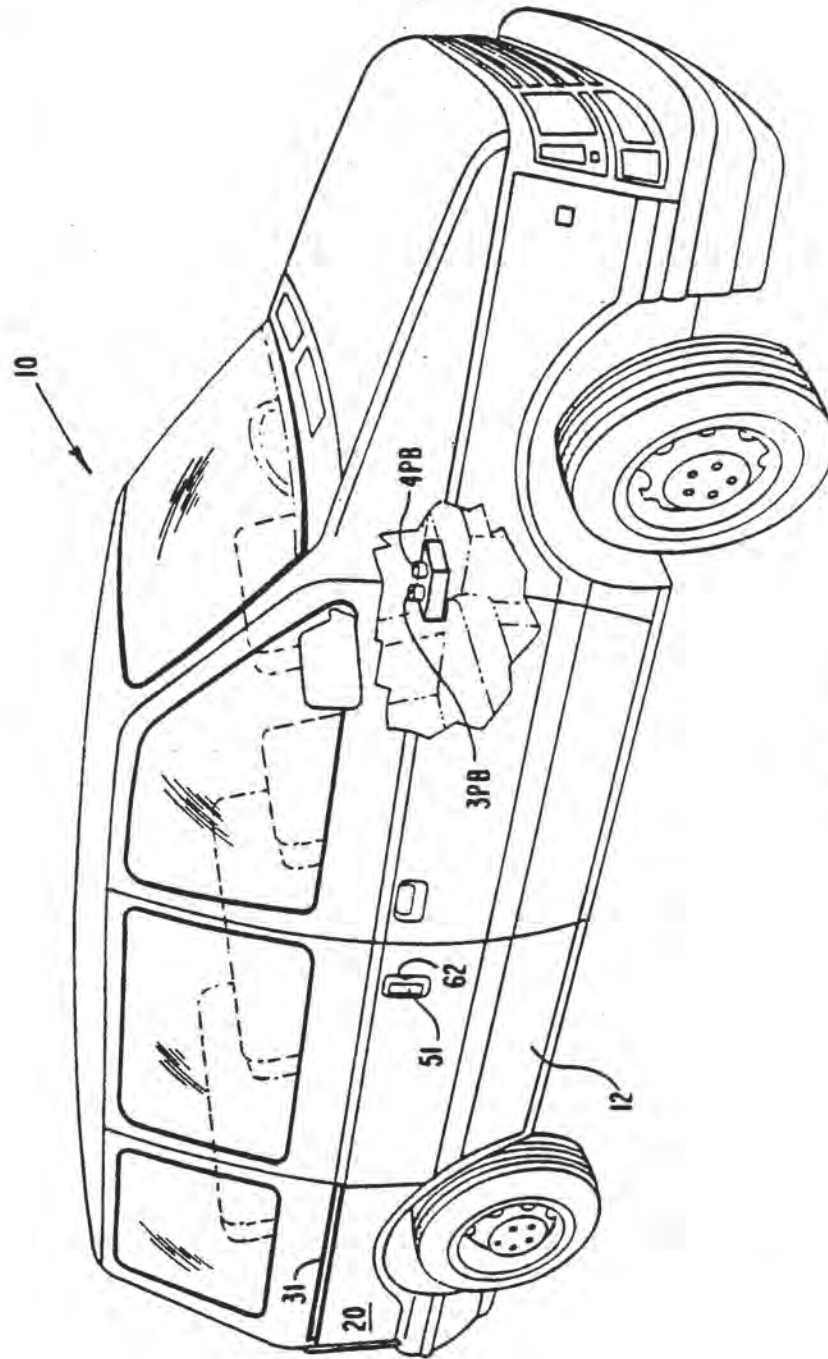


FIG. 1

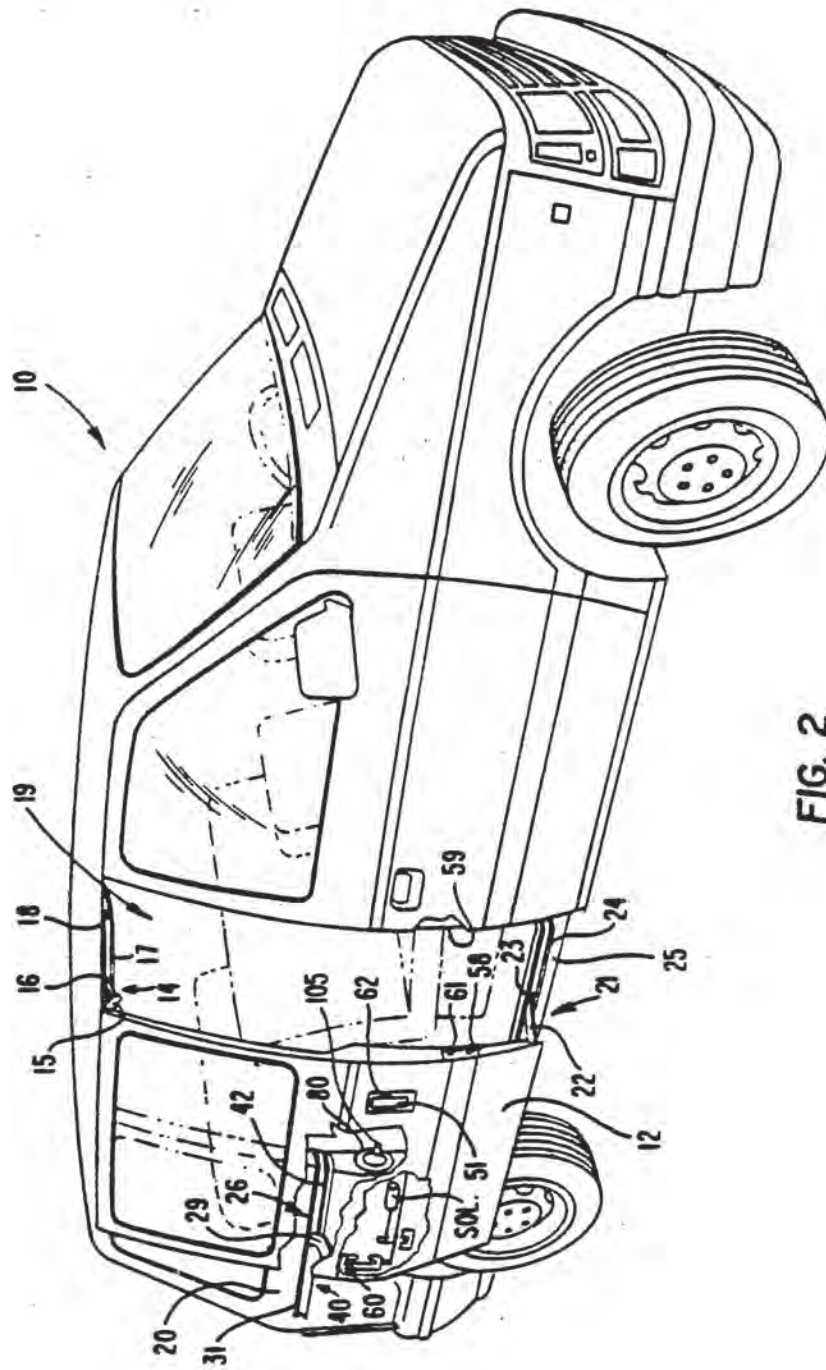
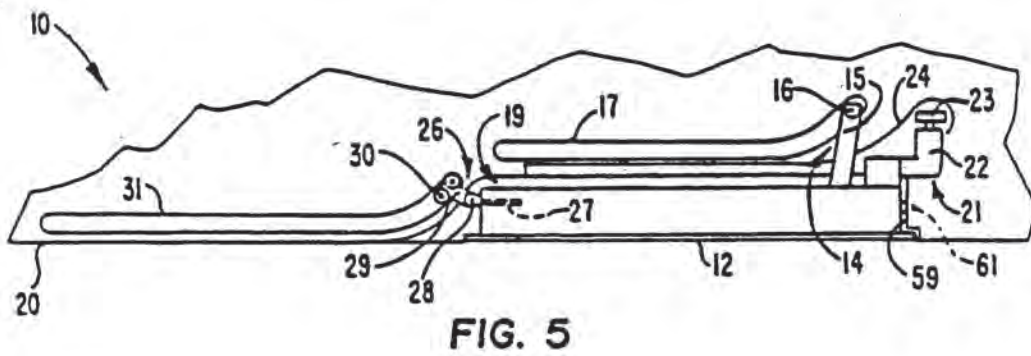
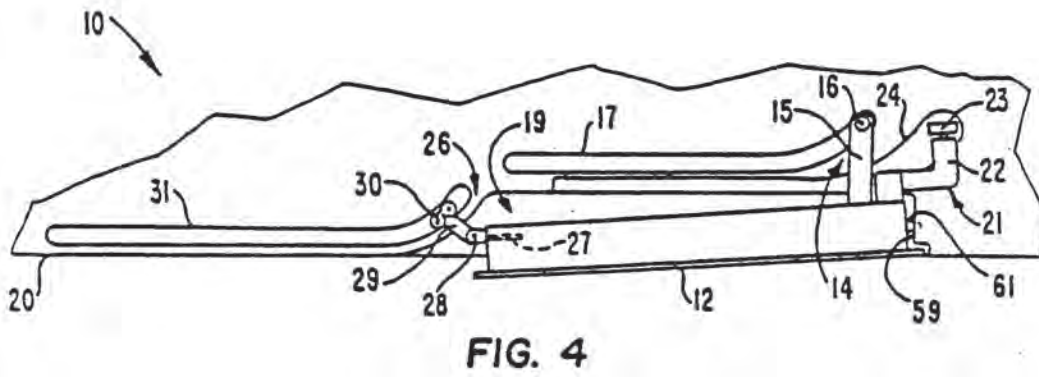
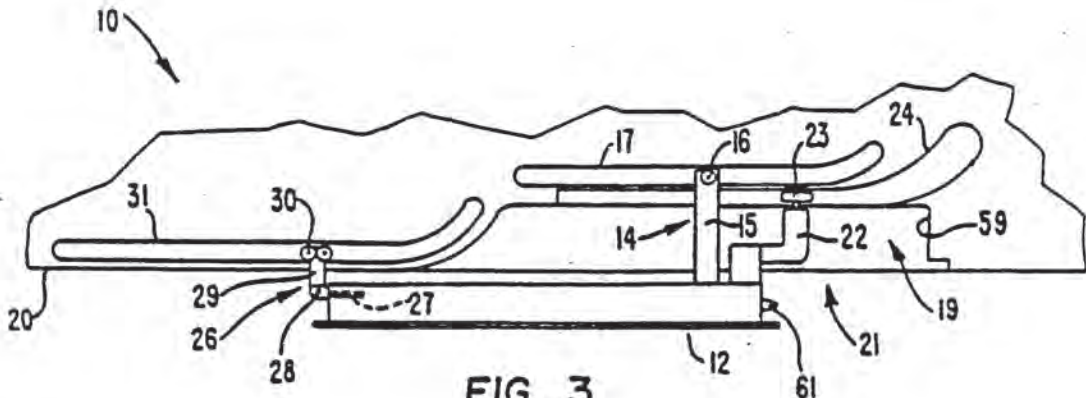


FIG. 2



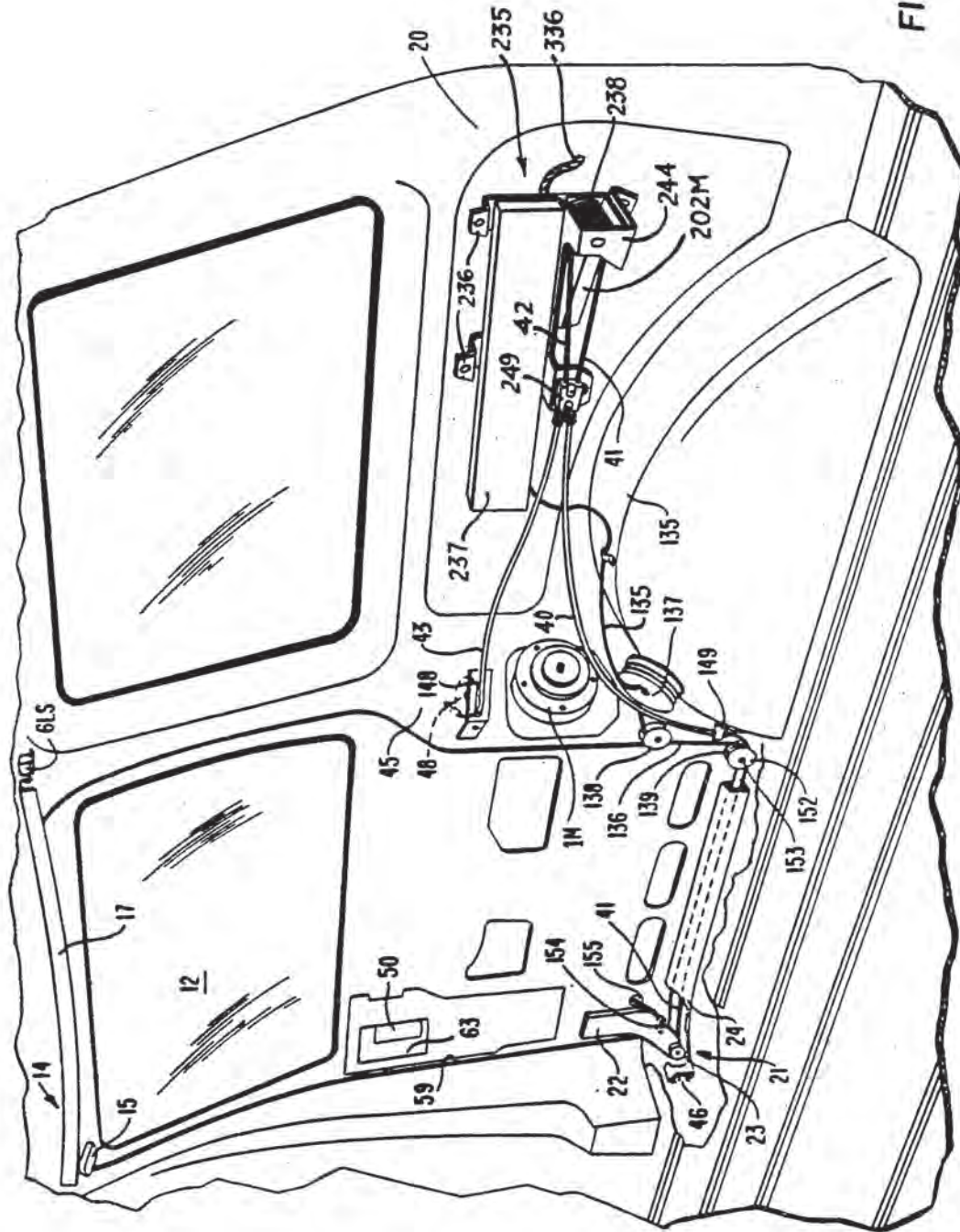


FIG. 6

Explore Litigation Insights

Docket Alarm provides insights to develop a more informed litigation strategy and the peace of mind of knowing you're on top of things.

Real-Time Litigation Alerts



Keep your litigation team up-to-date with **real-time alerts** and advanced team management tools built for the enterprise, all while greatly reducing PACER spend.

Our comprehensive service means we can handle Federal, State, and Administrative courts across the country.

Advanced Docket Research



With over 230 million records, Docket Alarm's cloud-native docket research platform finds what other services can't. Coverage includes Federal, State, plus PTAB, TTAB, ITC and NLRB decisions, all in one place.

Identify arguments that have been successful in the past with full text, pinpoint searching. Link to case law cited within any court document via Fastcase.

Analytics At Your Fingertips



Learn what happened the last time a particular judge, opposing counsel or company faced cases similar to yours.

Advanced out-of-the-box PTAB and TTAB analytics are always at your fingertips.

API

Docket Alarm offers a powerful API (application programming interface) to developers that want to integrate case filings into their apps.

LAW FIRMS

Build custom dashboards for your attorneys and clients with live data direct from the court.

Automate many repetitive legal tasks like conflict checks, document management, and marketing.

FINANCIAL INSTITUTIONS

Litigation and bankruptcy checks for companies and debtors.

E-DISCOVERY AND LEGAL VENDORS

Sync your system to PACER to automate legal marketing.