

(19) Japan Patent Office (JP) (11) Utility Model
Application Disclosure
(12) Utility Model Disclosure Publication (U) Utility Model H4-102059
(43) Disclosure September 3, 1992 (H4)

(51) Int. Cl. ^{5th}	Classification	Internal Control No.	FI	Technical index
G 01 P 1/07		Z 9010-2F		
B60 K 31/00		Z 6948-3D		
35/00		Z 6948-3D		
G01P 1/10		Z 9010-2F		

Examination requested Not requested Number of inventions 1 (Total 4 pages)

(21) Application number: Utility Model H3-10762
(22) Date of filing: February 7, 1991 (H3)

(71) Applicant 000006895
YAZAKI Corporation
4-28 Mita 1-chome, Minato-ku, Tokyo
(72) Inventor Yoshikazu NAGASHIMA
c/o YAZAKI Corporation
1500 Mishuku, Susono-shi, Shizuoka 410-1194
Japan
(72) Inventor Keizo NISHITANI
c/o YAZAKI Meter Co., Ltd.
1500 Mishuku, Susono-shi, Shizuoka 410-1194
Japan
(72) Inventor Yutaka INOUE
c/o YAZAKI Meter Co., Ltd.
1500 Mishuku, Susono-shi, Shizuoka 410-1194
Japan
(74) Agent Hideo TAKINO, Patent Attorney
(and one other)
Continued on the last page

(54)[Title of Invention]

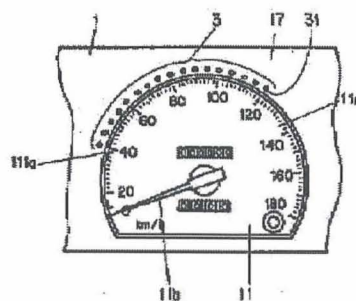
SETTING SPEED DISPLAY READOUT FOR CRUISE CONTROL UNIT



(57) [Summary]

[Purpose] The purpose is to provide setting speed display readout of cruise control unit which can be set up in the vicinity of speedometer in a limited space, and as a result, speed setting of cruise control and the actual speed can be easily compared.

[Composition] Setting speed display readout (3) which displays said setting speed of cruise control unit controlling vehicle travel in order to travel at preset constant speed, wherein a plurality of indicators (31) is arranged in dots along a scale (11a) of speedometer (11) and that which corresponds to the setting speed mentioned above in a said plurality of indicators (31) is lit to display the setting speed.



- 3 Setting speed display meter
- 31 Indicator
- 11 Speedometer
- 11a Scale

[Claims of the Utility Model Registration]

[Claim 1]

The setting speed display readout of cruise control unit characterized by setting speed display readout (3) which displays said setting speed of cruise control unit controlling vehicle travel in order to travel at preset constant speed, wherein a plurality of indicators (31) is arranged in dots along a scale (111a) of speedometer (11) and that which corresponds to the setting speed mentioned above in a said plurality of indicators (31) is lit to display the setting speed.

[Brief Explanation of Drawings]

[Figure 1] This depicts one embodiment of the setting speed display readout of the cruise speed device according to the present invention.

[Figure 2] This is a circuit schematic drawing of the cruise speed device of the present invention.

[Figure 3] This is a partial flow chart explaining the operation of the cruise speed device of the present embodiment.

[Figure 4] This is a partial flow chart explaining the operation of the cruise speed device of the present embodiment.

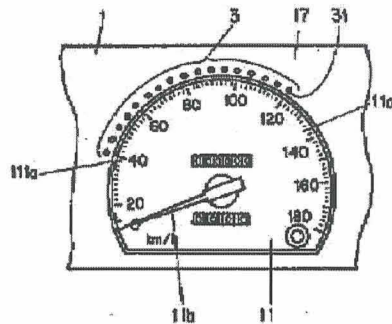
[Figure 5] This is a drawing depicting another embodiment of the cruise speed display meter of a conventional cruise speed device relating to the present invention.

[Figure 6] This is a drawing depicting the conventional cruise speed indicator.

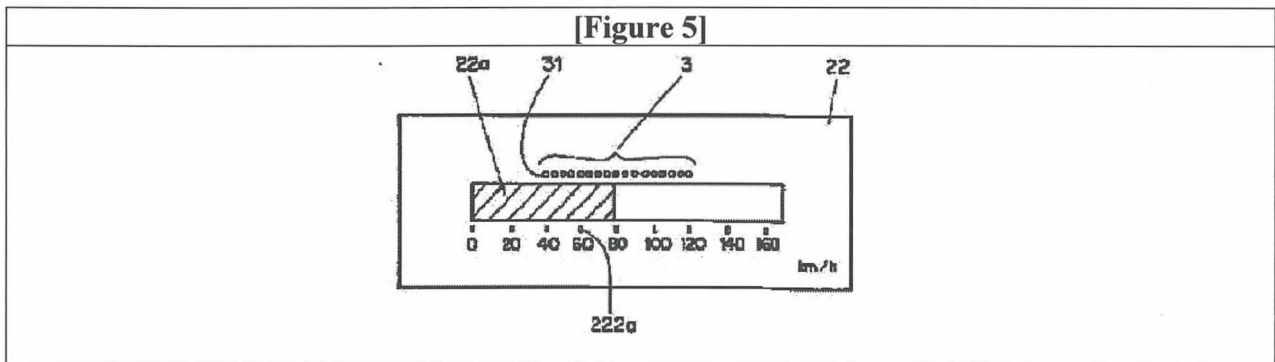
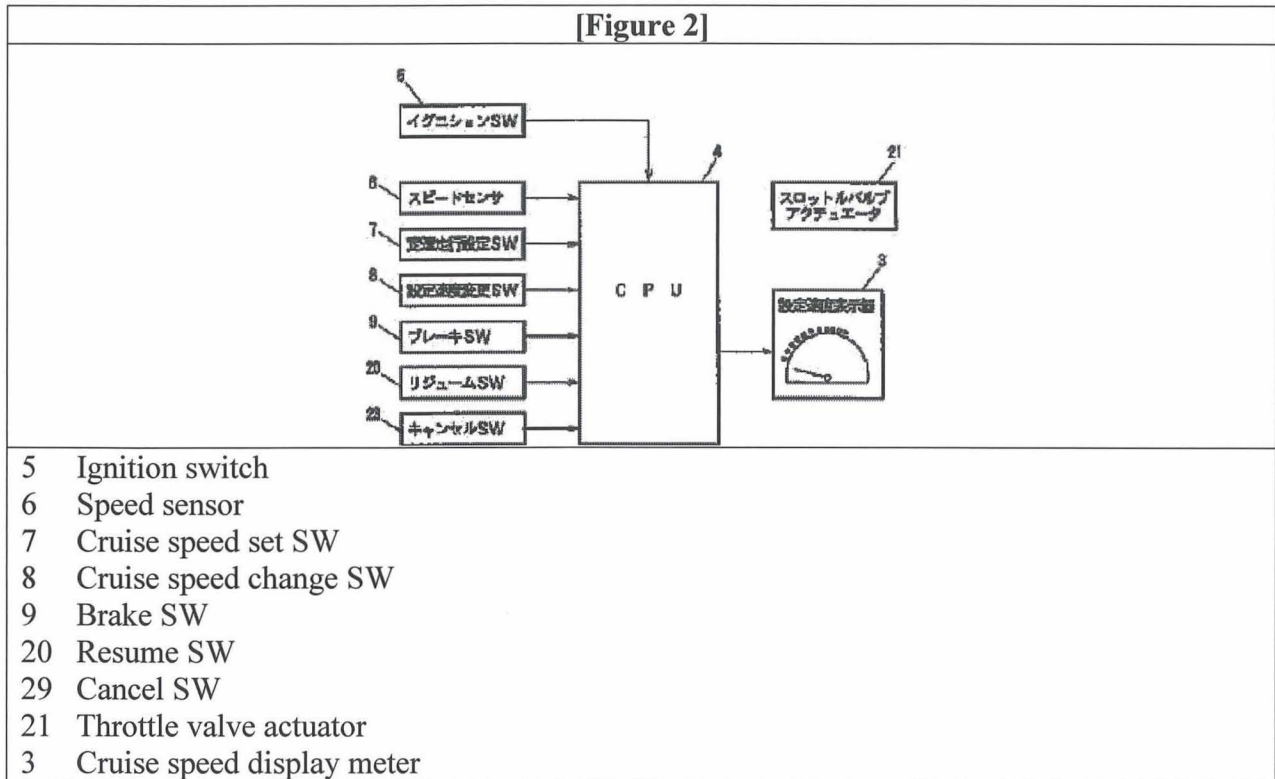
[Explanation of symbols]

- 3 Setting speed display meter
- 31 Indicator
- 11 Speedometer
- 111a Scale

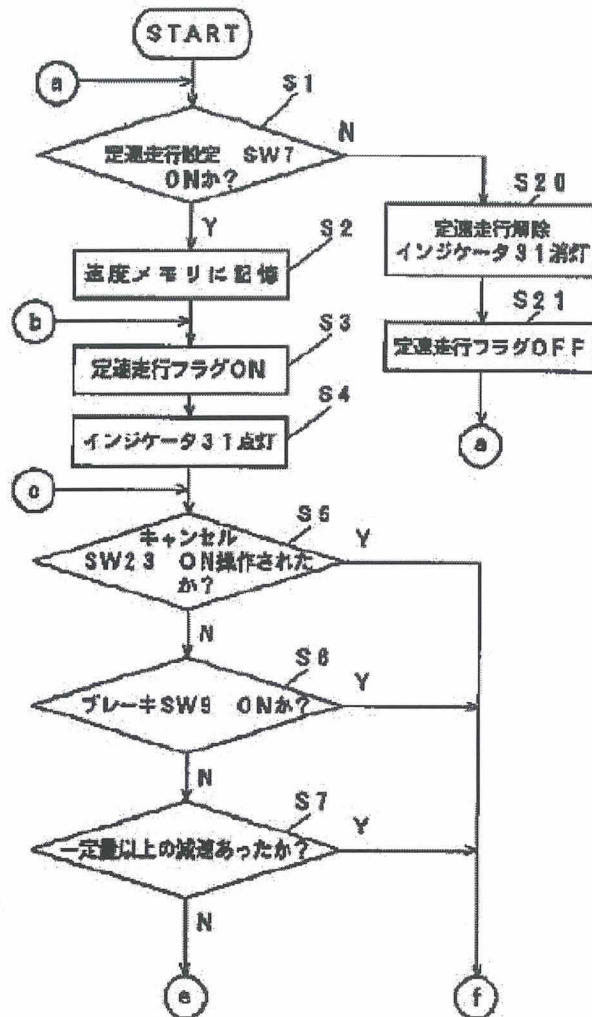
[Figure 1]



- 3 Setting speed display meter
- 31 Indicator
- 11 Speedometer
- 111a Scale



[Figure 3]



S1 Is cruise speed travel SW7 ON?

S2 Store in speed memory

S3 Cruise speed travel flag ON

S4 Indicator (31) lights

S5 Is cancel SW 23 operated as ON?

S6 Is Brake SW 9 ON?

S7 Is speed reduced above a certain speed?

S20 Cancel cruise speed travel

Indicator 31 light off

S21 Cruise speed travel flag OFF

Explore Litigation Insights

Docket Alarm provides insights to develop a more informed litigation strategy and the peace of mind of knowing you're on top of things.

Real-Time Litigation Alerts



Keep your litigation team up-to-date with **real-time alerts** and advanced team management tools built for the enterprise, all while greatly reducing PACER spend.

Our comprehensive service means we can handle Federal, State, and Administrative courts across the country.

Advanced Docket Research



With over 230 million records, Docket Alarm's cloud-native docket research platform finds what other services can't. Coverage includes Federal, State, plus PTAB, TTAB, ITC and NLRB decisions, all in one place.

Identify arguments that have been successful in the past with full text, pinpoint searching. Link to case law cited within any court document via Fastcase.

Analytics At Your Fingertips



Learn what happened the last time a particular judge, opposing counsel or company faced cases similar to yours.

Advanced out-of-the-box PTAB and TTAB analytics are always at your fingertips.

API

Docket Alarm offers a powerful API (application programming interface) to developers that want to integrate case filings into their apps.

LAW FIRMS

Build custom dashboards for your attorneys and clients with live data direct from the court.

Automate many repetitive legal tasks like conflict checks, document management, and marketing.

FINANCIAL INSTITUTIONS

Litigation and bankruptcy checks for companies and debtors.

E-DISCOVERY AND LEGAL VENDORS

Sync your system to PACER to automate legal marketing.