

This supplement contains...

Supplement to
MILLER FREEMAN PUBLICATION
JANUARY 1995

TOOLS FOR WINDOWS™

HUNDREDS of
Application Development Tools

SAVE TIME Looking for Programming Tools
for Windows™, Windows™95, & Windows NT™

LOADS of Product Categories!

- Compilers
- Rapid Application Development
- Libraries
- OLE Controls
- Add-ons for Visual Basic
- Utilities

...and many,
many more!

PRODUCT
DESCRIPTIONS

PRICING
INFORMATION



VZ Comblidr, version 3.0
VZ Corp.
(801) 595-1352 (800) 377-1090

A unique option added to VZ Programmer that provides for the building of software components. Any function designed by VZ Programmer may be wrapped into an appropriate class making it into a software component. This can then be placed in the library and reused in any other application. \$1,000.

Circle reader service number 921

VZ Lite, version 3.0
VZ Corp.
(801) 595-1352 (800) 377-1090

A codeless programming environment that is used to build applications by importing and assembling components from the VZ library. If a desired function is not available from the library then VZ Lite may also be used to define the new function by designing the objects and their presentation on the screen. \$295.

Circle reader service number 921

VZ Programmer, version 3.0
VZ Corp.
(801) 595-1352 (800) 377-1090

A programming environment that extends the function of the application by adding C++ code to the objects. This is a non-limiting programming environment that allows the programming of anything that can normally be programmed using C++. \$2,000.

Circle reader service number 921

WindowBuilder Pro/V, version 1.0
Objectshare Systems Inc.
(408) 970-7280

An interactive tool for building graphical user interfaces in Dialogtalk Smalltalk/V. Developers can incrementally create an interface and viewing the precise effects of each of the revisions. Includes full source code. No run-time fees. \$295-\$495.

Circle reader service number 784

WorkFlow.2020
Fischer International Systems Corporation
(813) 643-1500 (800) 237-4510

WorkFlow.2020 is a comprehensive GUI system based on object oriented programming that electronically automates business processes. Custom electronic forms are created simply and quickly with a point, click, and drag toolbox of objects, or set of ready-to-use WorkFlow.2020 templates. \$295.

Circle reader service number 664

COMMUNICATIONS/ CONNECTIVITY/NET WORKING

A2B for Windows, version 3.0
Simware Inc.
(613) 228-5100 (800) 267-9991

A2B provides 7 custom controls to give programmers complete control of remote host connections. Allows multiple 3270, VT10/220 and TTY sessions for emulation file transfer and printing. Remote support includes Async Dial-up, X.25, Dial-up TCP/IP (SLIP/PPP). Remote LAN Access. Also supports TCP/IP Netware for SAA, 3270 cards, and others. \$249.

Circle reader service number 846

**ADONTEC SuperCom 3.0 Windows 3.x,
version 3.0**
Fine Line International
(707) 887-3400

A portable development tool for serial communication software. Interrupt-driven: transmission, reception, line status, modem status. COM1 to COM36. Buffers up to 64K. Up to 115200 Baud. Uarts 8250, 16450, 16550 FIFO. Flow control: RTS/CTS, DTR/DST, XON/XOFF and user defined. ZMODEM (incl. crash recovery), YMODEM/BATCH, YMODEM, XMODEM/CRC, XMODEM, ASCII, ANSI, TTY, VT52. Event-Routines for all UART events. Many other features. \$399. DOS version also available, \$299. Windows NT, version supports threads, and multitasking. Full source. Ports to DOS, Windows, and OS/2. \$399.

Circle reader service number 661

AIR Connect, version 3.0
Spry
(206) 447-0300 (800) SPRY-NET

Provides network-independent connectivity applications and services that combine industry standard WinSock TCP/IP. The implementation of a network-independent architecture ensures future compatibility and expandability with all TCP/IP transports. AIR Connect includes: Telnet, NFM, FTP/RCP, LPR/LPD, tn3270, Windows Dialer, Mail, News, Gopher, AIR Mosaic, and Image View. \$349. Also available: Air Core, Air Navigator, and Air NFS.

Circle reader service number 871

AIR X, version 3.0
Spry
(206) 447-0300 (800) SPRY-NET

A server that enables the PC to display X-Windows applications running on remote multiuser systems. It will turn the PC into an X-Windows graphics terminal under the Microsoft Windows environment, as well as run Microsoft Windows and X-Windows applications side-by-side. \$199 single copy.

Circle reader service number 871

ANGOSS MVP Middleware, version V.3
Angoss Software
(416) 593-1122

MVP Middleware renders applications database independent, provides database interoperability to applications, provides performance enhancements to the underlying data base engines and supports data base migration and replication services to production data on major relational DBMSs. Pricing based on # of users.

Circle reader service number 557

Arnet ATS, Terminal Server
Arnet Corp.
(615) 834-8000 (800) 366-8844

Arnet ATS features terminal connectivity with telnet, rlogin, or DEC licensed-LAT, Wide Area Networking (WAN) SLIP, CSLIP, PPP, Printer connectivity TCP/IP UNIX "lpd," DEC LAT, Comprehensive Security Management, Network including integrated EPROMS, and On-board surge protection on all signal lines.

Circle reader service number 564

Asante View for Windows, version 2.4
Asante Technologies Inc.
(408) 435-8388 (800) 662-9686

AsanteView is the industry's first network management software with both in-band (SNMP) and out-of-band network management capabilities from both Windows PCs and Apple Macintoshes. AsanteView tracks 16 performance statistics and supports user-defined alarm thresholds. Its graphical user interface provides network "health meters," statistics charts, and graphical network mapping. Pricing starts at \$399-\$1,299.

Circle reader service number 566

Async Professional for Windows, version 1.0
TurboPower Software
(719) 260-9136 (800) 333-4160

CANDELA COLOR MANAGEMENT SYSTEM (CCMS)

The CCMS is a color toolbox for software developers. You can create 3-D, non-linear, non-separable color transformations that are necessary for high-end color correction. This comprehensive library of C callable routines, color transformations, gamut mapping functions, image test targets and clearly written API is all you need to solve complex color calibration and color matching problems. You can produce Candela Color-Circuits® for the highest precision-speed transformations or create Color Rendering Dictionaries for compatibility with ADOBE Postscript Level 2. The CCMS is Available for most ANSI C supported environments. A 138 page API is available FREE to qualified developers.

CANDELA
(612) 894-8890

Candela Ltd. • 1676 East Cliff Road
Burnsville, MN 55337-1300

CIRCLE NO. 501 ON READER SERVICE CARD

Windows Communications

Do you need to make your Windows Application communicate over a COM port? Need to transfer data files from your C/C++, Access, Paradox, FoxBase or other Windows Development Language?

CrystalCOMM for Windows - \$175

It supports the development of modem or serial port communication programs. Crystal COMM can run in the foreground or background. CrystalCOMM supports XMODEM, XMODEM-CRC, XMODEM-1K, YMODEM, YMODEM/Batch, XMODEM, KERMIT, and Compuserve B+ protocols through a simple, structured function interface. Supports Digiboard and up to nine ports at high speed. CrystalCOMM for DOS - \$150, CrystalCOMM for NT - \$200, and CrystalCOMM for OS/2 - \$225 are also available.

Crystal Software, Inc.
(906) 822-7992

P.O. Box 247, Amasa, MI 49903, USA - Fax (906) 822-7994

Build Your Own CAD Product with TG-CAD Professional 5.0

A 'C' programmers' software developers kit for Windows and DOS. Comes as a Windows DLL, Windows library and a DOS library.

FEATURES: Hundreds of simple and complex geometric routines in 2D and 3D for CAD programming. Read, write and draw DXF files R10 to R12. A drawing library compatible with DOS and Windows. Ray tracing and shading. Create and display symbols and text. Read and write PCX and GIF files. Dimensioning. NURBS, and much more. Call or Fax today for more information on this complete software developers kit for CAD programmers. Ask for our Technical White Paper.

Disk Software, Inc.

109 S. Murphy Rd., Plano TX USA 75094
Phone/Fax 214-423-7288

An asynchronous communications library for C++ and Turbo Pascal programmers. It provides interrupt driven buffered I/O to 115k baud; ZMODEM, Kermit, XMODEM, YMODEM, and CompuServe B+ protocols; automatic flow control; and other facilities. Includes Pascal OWL, Borland C++ OWL2, and Microsoft MFC interface classes around a DLL. Complete source code and no royalties. \$199.

Circle reader service number 901

COMM-DRV/Lib, version 15.0
Willies' Computer Software Co.
(713) 498-4832 (800) 966-4832

Professional serial communications libraries and DLLs for Windows & MSDOS. MS-DOS & Windows APIs are identical. Supports virtually any number of ports. Supports most intelligent multiport serial communication cards (Digiboard, Arnet, etc.) and all non-intelligent multiport cards including COM1-COM4. Supports speed in excess of 115.2 K Baud. \$189.95.

Circle reader service number 932

COMM-DRV/VxD, version 15.0
Willies' Computer Software Co.
(713) 498-4832 (800) 966-4832

Ultra high speed serial communication. VxD for Windows and MS-DOS sessions. Allows multiple 8250/16450/16550 compatible UARTs to attain speeds in excess of 115.2 K Baud. Supports virtually any number of serial ports operating concurrently. \$99.95.

Circle reader service number 932

COMM-LOG
Willies' Computer Software Co.
(713) 498-4832 (800) 966-4832

Group of cooperating programs and TSRs for developing serial applications. Programs and TSRs may be called from applications by shelling to them or by using a "C" API. Alternatively applications may be built entirely with an English-like script. \$189.95.

Circle reader service number 932

COMMtelligence, version 1.3
Drumlin
(818) 244-4600

A 2- or 4-channel intelligent communications coprocessor board that unloads serial line handling from the CPU. 512K of RAM on-board for deeply buffered serial data. DOS C library and Windows 3.1 DLL are included. A separate developers kit can be used to create .EXE file to download onto the PC-compatible coprocessor board for front-end processing. \$395.

Circle reader service number 642

CommTools for FoxPro (DOS/Win), version 2.0
Pinnacle Publishing
(206) 251-1900 (800) 788-1900

A communications library allowing FoxPro programmers to add telecommunication, serial communications, modem, and fax capabilities to their applications. \$299.

Circle reader service number 802

Connection Manager, version 3.7
SoftwareHouse Corp.
(415) 949-0203

A software only, non-dedicated modem server for IPX and NetBIOS networks. Supports serial ports and multiport board at speeds to 115200 bps. Use with DOS communications program that support NASL or I14 or any Windows communications program. Supports outbound and inbound calling for remote access. Lite \$195, Standard \$395.

Circle reader service number 865

CoSession/PC2X, version 1.0

UniPress Software Inc.
(908) 287-2100 (800) 222-0550

Provides PC remote control from UNIX workstations. With CoSession/PC2X you display and control PCs in X Windows on a UNIX workstation or X terminal. Mouse and keyboard work as if you are at the PC itself. Leverage your PC hardware investment. Add UNIX to your existing PC LANs. Requires FTP's PC/TCP. \$595 Starter pack (includes PC host side & UNIX client side).

Circle reader service number 907

CrystalCOMM for Windows, version 3.4
Crystal Software Inc.
(906) 822-7992

CrystalCOMM for Windows is a communications library designed for Windows Developers, accessible from virtually all languages. The DLL Library provides XMODEM, XMODEM_CRC, XMODEM-1K, YMODEM, YMODEM_B, ZMODEM, KERMIT, CompuServe, Crystal, and ASCII protocols. It allows you to move characters through a port or to script client and host. CrystalCOMM can control nine ports concurrently, each up to 115K.

Circle reader service number 619

See our ad on page 19

D-Manager Network Management Program, version 1.0

D-Link Systems Inc.
(714) 455-1688

D-Manager is a network management program that allows the user to monitor and evaluate the performance of different PCs connected to the network and to perform administrative functions such as rebooting and resetting systems. The program can also communicate with SNMP based programs.

Circle reader service number 621

D-View Network Management Program, version 3.0 rev 1.0
D-Link Systems Inc.
(714) 455-1688

AI-based SNMP based network management software system that runs under the MS-Windows environment. Management tools include auto discovery, map editor, MIB compiler, and alarm manager for network management. Unique features include threshold, advanced PING, device locator, name services, node summary, and inventory.

Circle reader service number 621

Developer's Toolkit II
Comtrol Corp.
(612) 631-7654 (800) 926-6876

The Developer's Toolkit II is used to integrate Hostess i or Hostess 186 multiport serial boards with Windows 3.1 or DOS applications. Features include innovative Developer Libraries with volumes of pre-tested code, on-board debugging, easy reference materials, and quick sample programs. \$695 Retail.

Circle reader service number 612

Distinct Back-Up (with TAR)
Distinct Corp.
(408) 366-8933

Distinct back-Up (with TAR) is designed to backup PC files onto the TCP/IP network server's tape device eliminating the need for a local tape device on each PC. Highly graphical representation of the backup contents facilitating full or partial restore to any drive. Ability to run scheduled automated backups onto the network server. \$200.

Circle reader service number 640

Distinct NFS
Distinct Corp.
(408) 366-8933

Allows file and printer sharing across multiple platforms. Runs over Distinct TCP/IP, Microsoft TCP/IP and Novell LAN Workplace. Works in Windows, Windows for Workgroups and DOS boxes. Implemented as a VXD. Client and Server in the same package. Includes Windows Sockets. Available on its own or bundled with the Distinct TCP/IP Tools package. \$195; \$495 with Distinct TCP/IP Tools.

Circle reader service number 640

Distinct TCP/IP for Windows-SDK Professional Ed.
Distinct Corp.
(408) 366-8933

The Professional Edition combines the standard edition with the Distinct TCP/IP Tools, a set of Windows applications including drag and drop FTP for easy file transfer, Telnet with multiple concurrent terminal emulation sessions and others. See also Distinct TCP/IP for Windows-SDK Standard Edition. \$695.

Circle reader service number 640

Distinct TCP/IP for Windows-SDK Standard Edition
Distinct Corp.
(408) 366-8933

Provides TCP/IP connectivity in the Windows environment. Windows sockets, Berkeley Sockets Kernel, ONC RPC/SCR, Telnet, FTP, SMTP, POP, NNTP. Support SLIP or PPP concurrently with Ethernet or Token Ring. 128 concurrent sockets. 200K of working sample source code included. Use with C, C++, or Turbo Pascal.

Circle reader service number 640

Distinct TCP/IP Tools/NFS for Windows
Distinct Corp.
(408) 366-8933

Distinct TCP/IP Tools for Windows includes the smallest and fastest Windows Sockets. Multiple Telnet sessions, drag and drop file transfer, e-mail, TFTP, Ping, Network Monitor, network printer driver for transparent remote printing (LPR/LPD), Finger, Whois, SNMP agent and more. Supports Packet, NDIS and ODI drivers concurrently with SLIP or PPP. \$395; \$1,200 (5-users); \$1,995 (10-users).

Circle reader service number 640

Distinct X/32
Distinct Corp.
(408) 366-8933

Distinct X/32 for Windows is a high performance 32-bit X Windows Server that resides on your PC allowing you to run X and Microsoft Windows applications concurrently. Fully MITX11R5 compliant, it is the fastest implementation on the market thanks to the underlying Distinct TCP/IP protocol stack. Also available in 16-bit. \$395 (32-bit); \$195 (16-bit).

Circle reader service number 640

DynaComm, version 3.2
FutureSoft
(713) 496-9400 (800) 989-8908

Provides comprehensive terminal emulation and network connectivity support for PC-to-host needs. Contains a script language with 350+ commands and functions to allow user customization. New features include a selective installation, support for the new DynaComm Toolkit for Visual Basic, advanced integration with TCP/IP protocol stacks, and a graphical dialog editor. \$249.

Circle reader service number 672

DynaComm/Elite, version 3.5
FutureSoft
(713) 496-9400 (800) 989-8908

Provides terminal emulation capabilities for Windows and Windows NT in an IBM and SNA mainframe environment with a wide range of connectivity options including

DFT/Coax, SDLC, 8002.2 LLC, AdaptSNA LAN, Eicon and Novell Gateways, and DCA/Microsoft CommServer. Includes a scripting language with 345+ commands and functions. \$395.

Circle reader service number 672

DynaComm/Elite, version 3.5
NetSoft
(714) 768-4013 (800) 352-3270

Offers Windows users access to applications residing on IBM mainframes. It offers 3270 and APPC functionality over a wide range of links, and is used with many gateways. Key features include: up to five concurrent LUs, file transfer, combined APPC/LU6.2 support, and a comprehensive script language. \$395.

Circle reader service number 771

DynaComm/Elite APPC, version 3.44
NetSoft
(714) 768-4013 (800) 352-3270

An APPC implementation designed as a true Windows application. Allows users to create APPC transaction programs that communicate with partner programs running on other computer systems. Occurring on a direct peer-to-peer basis, these conversations eliminate the overhead associated with traditional terminal emulation. \$285.

Circle reader service number 771

DynaComm/OpenConnect 5250, version 3.3
FutureSoft
(713) 496-9400 (800) 989-8908

Windows-based 5250 terminal emulation. Supports connectivity over most available TCP/IP transports, including any Windows Sockets 1.1 compatible stack. Features in-

clude a scripting language with 345+ commands and functions. Includes a drag-and-drop keyboard mapper, floating flashpad for point-and-click transmission, and color editor. \$395.

Circle reader service number 672

DynaComm/OpenConnect TN3270, version 3.3
FutureSoft
(713) 496-9400 (800) 989-8908

Offers a feature-rich terminal emulation of the IBM 3270 environment to PCs running Windows. Supports the TELNET protocol standard to provide IBM Distributed Function Terminal (DFT) 3270 support to TCP/IP LAN users and a variety of TCP/IP LAN to SNA interfaces. Includes a scripting language with 345+ commands and functions. \$395.

Circle reader service number 672

Elite/400, version 4.05
NetSoft
(714) 768-4013 (800) 352-3270

NetSoft's Elite/400 is a powerful SNA communications software client that allows PCs running Windows to access applications and data on IBM AS/400 midrange computers. It provides APPC-based display emulation, printer emulation, data transfer capabilities, and NS/Router, a software router replacement for IBM's PC Support/400 on the client. \$195.

Circle reader service number 771

Emc2/TAO, version 3.4
Fischer International Systems Corporation
(813) 643-1500 (800) 237-4510

Emc2/TAO is an enterprise-wide electronic mail and office automation communication system that runs on mainframe, midrange, and LAN alike. Features include in/out baskets,

bulletin boards, file folders, calendars, electronic files, conferencing, mailing lists, and mail forwarding. Provides gateways such as X.400, SNADS, MHS, SMTP, FAX, and others. \$1,100 (25 users).

Circle reader service number 664

Enterprise Wide(tm)
TechSmith Corp.
(517) 333-2100 (800) 517-3001

Enterprise Wide(tm) provides remote access to client/server applications. Supports multiple X.25 or asynchronous connections and offers dramatic performance enhancements using ProtocolAssist(tm). Offers configuration options, multi platform support, and system management. Special enhancements available for users of Microsoft or Sybase SQL Server. Starts at \$2,495 for 4 async. connections.

Circle reader service number 891

eXodus for DOS
White Pine Software
(603) 886-9050 (800) 241-PINE

Connects users of DOS-based computers to host-based X Window applications and provides full access to graphical applications running on most workstations and UNIX-based computers. Complete with built-in TCP/IP and support for most popular third-party drivers, eXodus for DOS also offers local and remote window management and support for DECwindows, OpenWindows, and HP-VUE. \$295.

Circle reader service number 931

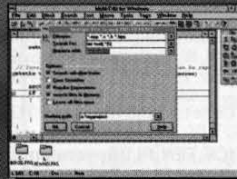
eXodus for Windows, version 5.5
White Pine Software
(603) 886-9050 (800) 241-PINE

Provides full X server capabilities to users of IBM compatible PCs running Microsoft Windows. Based on Release 5

The Wait Is Over!



World wide, Multi-Edit has become the DOS programmer's editor of choice. Now it's available for Windows! Imagine, the power and flexibility that Multi-Edit is known for, combined with the integration and graphical ease of Windows. You will sacrifice nothing making the move to a Windows editor. Multi-Edit for Windows is FAST and extremely POWERFUL.



Total integration - Turn Multi-Edit for Windows into your own personalized IDE. Integrate all your tools together. Compile, link and make without leaving the editor. Integrate into your existing environment through powerful DDE and DLL support. Link in your compiler's (or any other) help files for full context/language-sensitive help. Unparalleled integration with most VCS systems, including PVCS, TLIB, Source Safe and MKS-RCS.

Complete Customization - Redefine the keyboard, customize the menus, modify the toolbars or create new ones, change every setting imaginable! All without touching any macros or .ini files.

Small Footprint - Some Windows editors require several meg of RAM just to run. Multi-Edit for Windows requires only 500k. It can edit a 200 meg file, even if you only have 4 meg of RAM!

- Edit up to 128 DOS, UNIX or Binary files of almost unlimited size.
- Synchronized, interactive File Compare!
- Construct matching and templates
- Source code tagging and browsing
- Integrated Spellchecker
- Session manager lets you juggle multiple projects!
- Pop-up ASCII chart, text ruler and notebook.
- Multiple file Search and Replace!
- Full regular expression support.
- Hex Editing!
- Syntax highlighting
- Unlimited Undo and Redo.
- Emulations for BRIEF, WordStar and others.
- Column blocks!
- Drag and drop editing!
- Much more!



Powerful Extensibility - The enhanced macro language is now so powerful, you can write entire Windows apps in it. With structures, arrays, DLL import, and a familiar C-like syntax, you can do almost anything. In addition, Multi-Edit for Windows provides a full DLL API. You can extend Multi-Edit in your favorite language, or integrate its editing power into your apps!



Workgroup Support - Complete network support, including file locking, multi-user configuration, and MAPI/MS Mail integration.

Multi-Edit for Windows \$199
Special UpDate prices



**DOCKET
ALARM**

Find authenticated court documents without watermarks at docketalarm.com.

of the X Window system (X11R5), eXodus offers a complimentary TCP/IP driver package, an eXpress option for high speed serial/modem connections and incorporates Microsoft's latest GUI, the "tab-folder-style" dialog for all configuration options. \$395.

Circle reader service number 931

EXTRA! for Windows, version 4.1

Attachmate
(206) 644-4010 (800) 426-6283

Provides an easy-to-use configurable GUI interface. Expert Controls dynamically monitor and respond to application and session events enabled in part by the EXTRA! Basic scripting language. An API-enabled platform provides industry standard APIs. Enterprise connectivity allows for SNA sessions via LAN, direct, and remote connections. \$425.

Circle reader service number 568

EXTRA! for Windows NT, version 1.0

Attachmate
(206) 644-4010 (800) 426-6283

A true 32-bit version of Attachmate's EXTRA! for Windows product. Provides a solution for organizations committed to or exploring Windows NT on the desktop and/or Microsoft's SNA Server for NT for host access. Connectivity options include using the FMI interface connecting to Microsoft's SNA Server for NT, Coax-DFT, 802.2 Token-Ring, and SDLC. \$425.

Circle reader service number 568

Fax C++ SDK for Windows, version 1.0

Black Ice Software Inc.
(603) 673-1019

Build black and white or color faxing applications. Includes Class 1, Class 2, and Class 2.0 driver. C++ interface and C-user interface, generic printer driver, image SDK plus.

Circle reader service number 581

FaxMan, version 1.0

Data Techniques Inc.
(704) 682-4111 (800) 955-8015

FaxMan is a custom control that adds fax sending and receiving capabilities to Windows applications. With FaxMan you can send TIFF, BMP, PCX, DCS images files or use the included printer driver to create your own output. Supports standard Fax modems. \$295.

Circle reader service number 623

Greenleaf Comm++, version 2.0

Greenleaf Software Inc.
(214) 248-2561 (800) 523-9830

Comm++ will accommodate interrupt-driven, circular buffered service for 35 ports at baud rates to 115,200 baud. As a C++ communication library, it provides a hierarchy of classes which give the programmer simple access and control of serial communications. Classes are provided for: serial port controls, modem controls, file transfer protocols, and calculation of check values. Includes classes that support hardware-dependent features. \$249.

Circle reader service number 678

Greenleaf CommLib, version 5.0

Greenleaf Software Inc.
(214) 248-2561 (800) 523-9830

A library for true interrupt driven asynchronous communications. Features XMODEM, YMODEM, ZMODEM, KERMIT, CompuServe B+, XON/XOFF, and RTS/CTS protocol support. Offers support for up to 35 simultaneous serial ports, 115 KBaud, standard and intelligent multiport board support, DOS extender support, modem access across networks, INT 14 BIOS and EBIOS support. Device independence is accomplished through a C implementation of virtual functions. \$359.

Circle reader service number 678

Greenleaf PowerComm, version 1.1

Greenleaf Software Inc.
(214) 248-2561 (800) 523-9830

A native Windows 3.1 implementation of Greenleaf CommLib 5.0. PowerComm consists of a DLL and virtual device driver (VxD). The DLL contains most of the high level code for file transfer, I/O, status, modem controls and other communications functions. The VxD contains the low-level Interrupt Service Routines and other time-sensitive code. Initialize any number of ports using one or more types of non-intelligent multiport boards in the same PC. \$179.

Circle reader service number 678

Greenleaf ViewComm, version 3.0

Greenleaf Software Inc.
(214) 248-2561 (800) 523-9830

A software serial data analyzer. See what's happening on the RS-232 serial port in great detail. Monitor mode examines data flow between a pair of communicating devices, capturing data, status, and modem signals plus timestamps to buffer, disk file or both and displays it live! Source Mode lets you send data to either device from the keyboard or file while observing responses. Triggers can be set, push to DOS, view data up to 115 KBaud, in ASCII, EBCDIC, Baudot, hex, octal, decimal, and binary. Comes with custom cable. Light and portable. \$399.

Circle reader service number 678

ICE

James River Group Inc.
(612) 339-2521

Connections to UNIX via serial, TCP/IP, or MODEM. ICE.TEN.PLUS, ICE, TCP, and ICE.OFF.SITE. In-depth terminal emulation of WYSE 60 and 160, VT220, ANSI, AT386, IBM 3151, and AT&T 605. File transfer, printing in both directions, and many other features. \$30 to \$70/user.

Circle reader service number 713

ICE.TCP, version 3.0

James River Group Inc.
(612) 339-2521

ICE.TCP(tm) is TCP/IP software to connect DOS and Windows PCs to UNIX hosts via a network. Includes terminal emulation (Wyse 60, Wyse 160, SCO and AT386 ANSI, and others), file transfer with tftp, ftp, FTCOPY (easy to use DOS program) and FTPWIN (point and click ftp) and bi-directional printing utilities. Runs as TSR with multiple connections to multiple hosts. Supports packet driver, NDIS or ODI. WinSock compatible. Requires TCP/IP on UNIX computer. \$695/10 PC license-\$4995/250 PC licenses.

Circle reader service number 713

ICE.TEN.PLUS, version 3.5a

James River Group Inc.
(612) 339-2521

ICE.TEN.PLUS connects DOS and Windows PCs to UNIX hosts via serial connections. It includes terminal emulation (Wyse 60, Wyse 160, ANSI, and others), easy-to-use DOS and Windows file transfer, bi-directional printing, and a DOS command shell for UNIX. Runs as TSR in as little as 52K at speeds up to 115200 baud. \$350-\$795.

Circle reader service number 713

IEEE 1284 vxd and API DLL

MTE Software Inc.
(619) 566-4420 (800) 697-3046

Virtual Device Driver that supports NIBBLE, ECP, and EPP Modes. Part of MTE's Venturi Print system which includes custom printer driver, Windows remote control panel, and font installer. Custom printer driver development services available. Call for pricing.

Circle reader service number 764

See our ad on page 51

ILOG BROKER(tm), version 1.0

ILOG Inc.
(415) 390-9000

A tool that extends the C++ language to transparently support Distributed Object Computing. With the tool, the semantics, syntax, and compilation model of C++ remains the same whether programming for a linked or distributed environment. Developers are freed from the need for expertise in communication technologies. \$3,500.

Circle reader service number 693

Internet In A Box, version 1.0

Spry
(206) 447-0300 (800) SPRY-NET

PC users to get onto the Internet. Provides instant connectivity, a multimedia Windows interface, a full suite of applications, and interactive guide to the Internet. \$149.

Circle reader service number 871

KEA! 340 for Windows, version 4.0

Attachmate
(206) 644-4010 (800) 426-6283

Provides VT340 terminal emulation for MS-Windows. Includes all the capabilities of a VT340, including multiple sessions, coupling, and downloadable fonts. Includes full support for ReGIS, Tektronix, and sixel graphics. Contains all of the features found in Attachmate's KEA! 420 product. \$395 Single system pack. Other system packs available.

Circle reader service number 568

KEA! 340 for Windows NT, version 4.01

Attachmate
(206) 644-4010 (800) 426-6283

Advanced connectivity for VAX and UNIX host text and graphics applications engineered specifically to run under 32-bit Windows NT. The only VT emulation product available for multiple NT platforms (DEC, Alpha, MIPS, and Intel). \$445 Single system pack. Other system packs available.

Circle reader service number 568

KEA! 420 for Windows, version 4.0

Attachmate
(206) 644-4010 (800) 426-6283

A Windows application providing emulation of DEC's VT420 text terminal, including double-high/double-wide characters, 132 column mode, true character attribute representation, block mode, downloadable fonts, user-definable keys, and replacement character sets. Features include: macro language, phone directory, shuttle file transfer, user-definable menus, dialog boxes, and on-screen buttons. \$245 Single system pack. Other system packs available.

Circle reader service number 568

KEA! 420 for Windows NT, version 4.01

Attachmate
(206) 644-4010 (800) 426-6283

Advanced connectivity for VAX and UNIX host text applications engineered specifically to run under 32-bit Windows NT. The only VT emulation product available for multiple NT platforms (DEC, Alpha, MIPS and Intel). \$295 Single system pack. Other system packs available.

Circle reader service number 568

KEAlink MSU, version 1.0

Attachmate
(206) 644-4010 (800) 426-6283

KEAlink MSU (Multisession Serial Utility) provides the ability to access multiple host sessions over a single serial line. Brings the productivity of multiple sessions to the user connected to a VAX through a single serial connection, directly or via a SSU enabled terminal server. Can run up to 6 live sessions over a single serial connection. Portions of this product incorporate technology licensed from Digital Equipment Corporation. \$50.

Circle reader service number 568

Explore Litigation Insights

Docket Alarm provides insights to develop a more informed litigation strategy and the peace of mind of knowing you're on top of things.

Real-Time Litigation Alerts



Keep your litigation team up-to-date with **real-time alerts** and advanced team management tools built for the enterprise, all while greatly reducing PACER spend.

Our comprehensive service means we can handle Federal, State, and Administrative courts across the country.

Advanced Docket Research



With over 230 million records, Docket Alarm's cloud-native docket research platform finds what other services can't. Coverage includes Federal, State, plus PTAB, TTAB, ITC and NLRB decisions, all in one place.

Identify arguments that have been successful in the past with full text, pinpoint searching. Link to case law cited within any court document via Fastcase.

Analytics At Your Fingertips



Learn what happened the last time a particular judge, opposing counsel or company faced cases similar to yours.

Advanced out-of-the-box PTAB and TTAB analytics are always at your fingertips.

API

Docket Alarm offers a powerful API (application programming interface) to developers that want to integrate case filings into their apps.

LAW FIRMS

Build custom dashboards for your attorneys and clients with live data direct from the court.

Automate many repetitive legal tasks like conflict checks, document management, and marketing.

FINANCIAL INSTITUTIONS

Litigation and bankruptcy checks for companies and debtors.

E-DISCOVERY AND LEGAL VENDORS

Sync your system to PACER to automate legal marketing.