

IBM plans consumer focus, corporate future for Warp

OPERATING SYSTEMS Client, Server versions to follow

BY ANDY PATRIZIO AND JOHN DODGE

AUSTIN, Texas—IBM this week will introduce OS/2 Warp, an entry-level product designed to gain a foothold in the home mar-

ket while serving as bait to lure corporate customers to a fuller version due next year.

IBM's Personal Software Products Division has five versions of OS/2 planned, Wally Casey, director of marketing at PSP, said at a briefing here last week. This release of Warp installs over a current Windows environment.

Sources said the street price of OS/2 Warp, due in stores by the end of this month, will be about \$80. Recent buyers of Version 2.1 received coupons for \$50 off the next version. IBM is also offer-

SEE WARP, PAGE 134

Function	OS/2 Warp	Windows 95
Multiprocessing	NO*	NO
Multithreading	YES	YES
Runs 16-bit Windows apps	YES	YES
Internet access	YES	YES
CompuServe front end	YES	YES
TCP/IP built-in	YES	YES
Peer-to-peer	NO	YES
NetWare requesters	NO**	YES
Win32 support	WIN32S ONLY	YES
Multitasking	YES	YES

*Available in OS/2 SMP **Available in forthcoming Enterprise version

GROUPWARE

Coming soon to your desktop: Workflow-enabled applications

BY ERICA SCHROEDER

A raft of workflow-enabled applications due in the first half of 1995 could have a major impact at corporate sites looking to revamp their business processes.

Vendors ranging from Lotus Development Corp., Novell Inc., and Microsoft Corp. to tiny PC Docs Inc. and Watermark Software Inc. are integrating support for workflow engines directly into their mainstream applications (see chart, Page 135).

The coming generation of workflow-enabled E-mail, finan-

cial, database, and other applications should help IS managers more easily link users in a workgroup. Because the workflow features are built into the applications, IS shops won't have to work as hard to add workflow capabilities to off-the-shelf software.

"Our current system is a major time-consumer. We could probably save a couple of days" using workflow software, said Jeff Capeci, advanced manufacturing engineer for Norden Sys-

SEE WORKFLOW, PAGE 135

Lotus and Apple forge enhanced messaging links

BY PAULA ROONEY

Lotus Development Corp. and Apple Computer Inc. are working on tighter bonds between Lotus' Notes groupware package and Macintosh clients in an effort



to ease communication among users.

According to sources, the work to strengthen those links is focused on three areas: products coupling Apple Open Collaboration Environment client/server E-mail and groupware packages with Notes; PowerPC versions of Notes 4.0 and cc:Mail; and an upgrade of the Macintosh client for Notes 4.0 that will bring it up to snuff with its Windows sibling.

The two companies are also considering bundling Lotus' Notes Express client with some Power Macintosh systems, said sources from both companies familiar with the talks.

The groupware enhancements should go a long way toward making it easier for IS

SEE MESSAGING, PAGE 139

Post-PReP standard will unify Power

RISC IBM could also build Power

BY STEPHEN HOWARD, MACWEEK STAFF, AND NEAL BOUDETTE

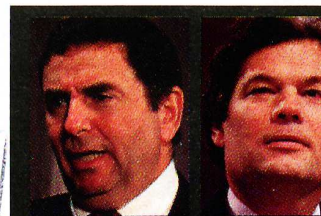
Where there's smoke, there's fire.

Amid speculation last week that Motorola Inc. might buy—or invest in—Apple Computer Inc., the purveyor of the Macintosh

was deep in negotiations with its other PowerPC partner, IBM, to hammer out a unified RISC hardware platform. IBM, which with Motorola has embraced PReP (PowerPC Reference Platform), and Apple, which has stuck to its own RISC architecture, are back at the bargaining table to discuss not only the common platform, but also the possibility of IBM building

Power Mac

The pair Comdex PReP standard AIM (for A which would



Happy anniversary? After three years, IBM and Apple have fallen far short of their goal in some areas, while making progress in others. Page 12

based on the be available said.

Jim Can vice president development at Apple he S

Novell pricing gets wake-up call: NT per-

BY ERIC SMALLEY

The per-node pricing model Microsoft Corp. introduced with the release of Windows NT Server 3.5 is forcing Novell Inc. to step up its plans to move to a similar scheme.

"Microsoft's [pricing] is compelling," said Richard King, executive vice president of Novell's NetWare Systems Group, in Provo, Utah. "It'll probably move us forward more rapidly than we had planned."

Novell offers per-node pricing to some larger users through an option to the company's Master License Agreement, but for less than 10,000 nodes the price is higher than

standard NetWare licenses. Novell is weighing how to bring per-node pricing to the entire product line, King said.

year. Novell additive licenses can co-censes to fo

LAN OPERATING SYSTEM PRICE COMPARISON

USERS	5	10	25	50	100
NT Server 3.5	898.75	1,098.50	1,697.75	2,695.50	4,694.00
NetWare 4.02	1,395.00	3,195.00	4,695.00	6,295.00	8,795.00
LAN Server	1,045.00	1,295.00	1,980.00	3,045.00	5,295.00
VINES	NA	2,995.00	NA	7,995.00	9,995.00

List prices, in \$. Discounts vary depending on reseller and are not net operating systems.

*includes required Symmetric Processing add-on

In the near term, Novell will add a measure of flexibility to its current pricing with the introduction of NetWare 4.1 late this

even if th count is ou dard increm S

NEWSPAPER SECOND-CLASS

multimedia PC would increase your productivity? Look no further than VocalChat to help you present a strong argument.

Anyone guilty of leaving yellow sticky notes affixed to other peoples' computers

**LABS
LAB NOTE**

VocalChat 2.0 is an updated and improved version of the already powerful, network-based intercom and voice-messaging software for Windows. Available now in a 10-user license for \$239 (site licenses are available), VocalChat

groups, and other popular network operating systems supporting the IPX, NetBIOS, TCP/IP, and NetBEUI protocols.

In addition to VocalChat's expanded network support, Version 2.0 offers a network-based post office in which to store

EASY A

PC Week Labs installed a variety of 386 and a NetWare 3.12 server equipped with Sound cards, which used a phone for voice input. Tec's CAT portable accommodates a multi-setup or a telephone. We used AT&T Corp.

Installation and getting Chat were easy. We were simple, intercom-style between users (each speaking and listening to cast voice messages through our NetWare server in real-time, bidirectional (such as with a telephone)—due to a limitation, not of VocalChat.

When a user was using

1-2 PUNCH

VocalChat 2.0's telephone messaging combines the convenience of an answering machine with the efficiency of a PC.

folders on the server typical voice-mail function.

In addition, VocalChat messages, using standard controls for recording and messages. We could then messages to multiple users.

VocalChat also permits a system. After a message (or other Windows appropriate people, their message as they worked in a User-defined hot keys control over message playback, fast forwarding, and Unlike typical dictationist had no pedals to the desk and no pile strewn about the desk.

SOLID WINDOWS

VocalChat makes good standard Windows Help software, were all ready.

Performance was 20MHz 386SX system Chat application uses kilobytes of RAM, less minimized (even on shouldn't be a problem.

VocalChat messages recorded (sampled) at 8 or 11KHz, and are saved WAV format to ensure

This material may be protected by Copyright law (Title 17 U.S. Code)

ACCELERATED ETHERNET

ETHERCOM ADAPTERS

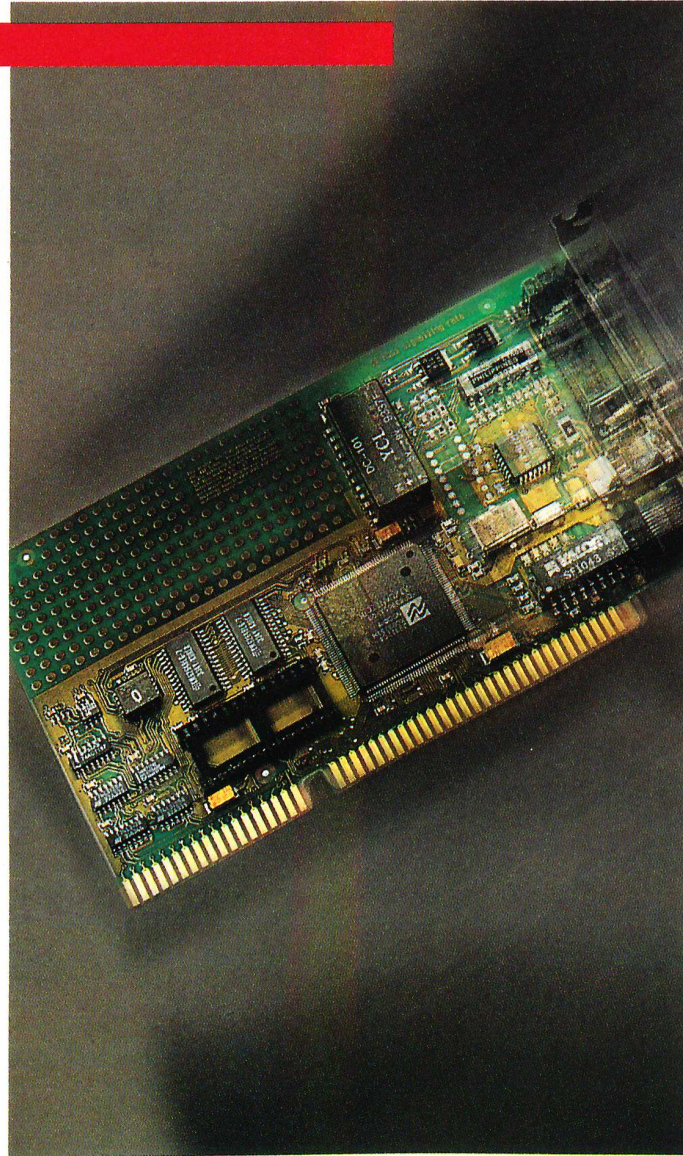
Introducing the second generation of EtherCom™ ISA Network Interface Cards (NICs). Incorporating **Parallel Processing** in the adapter increases performance 50% over previous Olicom Ethernet card offerings.

This increase in performance was achieved while still retaining full compatibility with the NE2000 and NE2000+. The adapter also adheres to the IEEE 802.3 Ethernet standards.

The new EtherCom ISA/II card features Olicom's new improved software driver that utilizes a Parallel Processing technique and features SNMP Desktop Agent for full desktop management including drivers for DOS, Windows and OS/2. We also include support for all major network operating systems including Novell Netware, Microsoft LAN Manager, IBM LAN and Windows/Workgroups.

If you run NE2000 or NE2000+ and are ready to shift into high gear, then the EtherCom ISA Network Interface Card is for you.

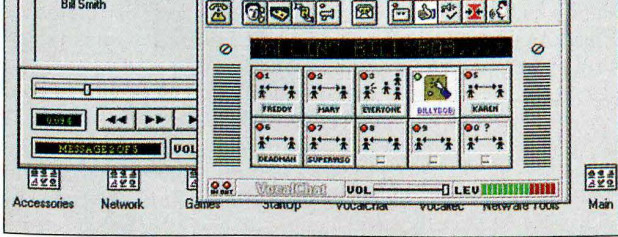
Call Olicom today. 1-800-2-OLICOM.



olicom 
THE NETWORKING COMPANY
1-800-2-OLICOM (265-4266)

**DOCKET
ALARM**

Find authenticated court documents without watermarks at docketalarm.com.



VOCALCHAT NOT ONLY made it simple to contact others on our network via quick-dial keys, but also eased voice-mail navigation.

ly offered proprietary 13-bit recording at 8KHz, which made noticeably better-sounding vocal recordings in files of approximately the same size as standard 8-bit recordings. With typical sound cards, the difference in perceived quality between 8KHz and 11KHz was not enough to justify the extra disk space or network traffic generated by the higher sample rate.

The VocalChat software goes one step further to minimize its impact on network traffic by using Adaptive Delta Pulse Code Modulation to compress voice when communicating in real time across the network. We noticed slightly less than the 2-1 compression ratio claimed by VocalTec in our testing, but the bottom line is that workgroups and small offices should not incur any noticeable performance hit to their network once users start sending voice messages.

Although VocalChat's overall sound quality wasn't as good as our telephone-based voice mail, testers didn't have any complaints.

If you're looking for a cool multimedia application that helps you see where the future interaction between telephony and personal computing is headed, you may want to check out VocalChat. But until such software can service your outside telephone system, it won't suffice as an adequate replacement product.

Small offices or workgroups lacking a voice-messaging system may find all the voice-mail features they need in VocalChat, and if your office has employees who are still using tape-recorder-style dictation systems, you're a likely benefactor of VocalChat's capabilities.

VocalTec, of Northvale, N.J., can be reached at (201) 768-9400. □

WinView

from page N/3

ing independent Web servers at the same time.

None of our users had an IP address of their own, and none of them had TCP/IP software installed on their PCs.

WinView is also a dial-up applications server, which means that remote users can dial in to the network via Citrix's Remote Link software and connect to the Internet.

Because only screen-redraw information is transmitted across the phone line, remote control of an applications server should provide users with better observable performance than if they used a remote IP solution, such as PPP or SLIP. We did not test this scenario to determine if this theory was correct.

A FINE SOLUTION FOR SOME

If you have been considering adding a WinView application server to your network, or you already have one, TCP/IP for WinView is an option you won't want to be without.

For companies that want to provide services

ing, one of the main administrative tasks entails monitoring the size of the databases: Pruning databases of old material can free up valuable disk space on the server and improve system performance.

Some of the newer systems, among them Collabra Share and OpenMind, have taken more proactive steps to limit the size of databases by allowing managers to restrict the size of messages or attached files that users can submit.

In addition, most of the systems on the market provide a mechanism for automatically "aging" material and purging it from the database after a period of administrator-defined time.

Indexing exerts one of the biggest impacts on system performance. Indexing, a mechanism that lets users quickly search and retrieve specific items, can consume a lot of processor time and disk space. For instance, Lotus officials estimate that indexing 20M bytes of text can take as long as an hour, depending on document length. In fact, the indexes themselves can eat up a sizable chunk of space: Depending on the amount of information indexed, the index of an 8M-byte file can be nearly 75 percent of the original file size.

To minimize the impact of indexing, administrators should limit the amount of information that is indexed. Rather than indexing the full text, only key words should be indexed, such as title, author, and company or product name.

Compared with OpenMind and Collabra Share, Notes has the most extensive administrative controls over indexing. Administrators can run indexing continuously, on an hourly basis, or on an administrator-chosen schedule. In contrast, OpenMind and Collabra Share expect that indexing will always be operating.

Using these indexing and aging utilities will ensure that the conference database is always being turned over, with fresh information taking the place of older material.

via the Internet, WinView allows the development of customized Windows application-based solutions that look and behave noticeably different from those on typical Web servers. The fact that these services can be accessed by PCs with slow CPUs and limited memory is a terrific bonus.

Although most network administrators would still prefer users to have individual IP addresses to make complete use of Internet- or TCP/IP-based tools, Citrix's solution may suffice in many instances.

For example, the TCP/IP for WinView offering is a solid choice for those who don't want to deal with the hassles of configuring multiple network protocol stacks on client PCs, those who want to provide remote users with Internet connectivity, or those who can't afford to buy TCP/IP software for everyone on the network.

For additional information about WinView, Citrix, of Coral Springs, Fla., can be reached at (800) 437-7503. □

Scott Kahn is a project leader at ZD Labs.

THE NEED FOR ARCHIVE

Unfortunately, conferencing protocols tend to come up with a satisfactory method of saving old messages. Old data is either deleted from the system or archived to a separate database and archiving material to a backup tape makes the data unavailable to users for information.

What is needed are links to hierarchical storage management) systems that automatically move, or migrate, data from a server's hard disk to off-line optical or tape libraries. Long used in mainframe

EARLY TOOL AGE

Managers must make sure discussion information is properly stored, archived, and distributed to remote offices and workgroups. But the tools used to administer conferencing systems not only vary considerably but are also in the early stages of evolution.

now moving into LAN architectures, HSM tend to leave a shadow of data that automatically replicates the original file once a user requests a replicated file. Such an approach can be very useful for large enterprises and attached files, but conferencing systems oriented toward document management.

Managing a conference database would be difficult were confined to only one server. But as context-oriented

systems find new life as document management and workflow-automation systems throughout an organization, requirements to synchronize information to distributed systems.

Lotus Notes and some of its competitors, as OpenMind, solve this problem by replicating information between servers, with administrators determining which databases should be synchronized and how often synchronization should occur. OpenMind has a periodic replication scheme that allows administrators to determine which subsections of a database have greater priority in replication.

SHORTCOMINGS TO ADDRESS

Replication, though powerful, is still an evolutionary process. While Notes uses specialized servers that can be dedicated to replication services, there is no mechanism for dealing with communications failures on servers that prevent replication. There are mechanisms that automatically detect alternative communications paths between servers.

Notes officials suggested that administrators establish redundant links between servers to ensure that material is replicated if one of the links should fail.

Administrators also need the ability to manage remote servers easily. Most systems require them to log on to each server individually to perform management tasks. Though devices and direct dial-in asynchronous connections make this possible, a central management console that can monitor all of the servers would be an option.

Desktop conferencing systems tend to lack monitoring functions. Today, if a server fails, no alarm or alert information is sent of this calamity. Finally, vendors need to integrate conferencing systems into such management services as SNMP. □