



(12) **United States Patent**
Bates et al.

(10) **Patent No.:** **US 6,247,043 B1**
(45) **Date of Patent:** **Jun. 12, 2001**

(54) **APPARATUS, PROGRAM PRODUCTS AND METHODS UTILIZING INTELLIGENT CONTACT MANAGEMENT**

Primary Examiner—Paul V. Kulik
(74) *Attorney, Agent, or Firm*—Wood, Herron & Evans, L.L.P.

(75) **Inventors:** **Cary Lee Bates; Paul Reuben Day,**
both of Rochester, MN (US)

(57) **ABSTRACT**

(73) **Assignee:** **International Business Machines Corporation,** Armonk, NY (US)

Apparatus, program products, and methods implement various intelligent contact management operations to improve the productivity of users of electronic messaging systems and the like. To perform an intelligent name lookup, for example, a subset of the users in a contact database that meet a predetermined search criteria is identified, and a favored user is selected therefrom based upon a predetermined affinity criteria. Also, the automated addition of new entries to a contact database is supported by accumulating the number of contacts between a first user and a second user, with a new entry associated with the second user added to the contact database associated with the first user in response to the number of contacts between the first and second users exceeding a predetermined threshold. The automated addressing of electronic messages is also supported by determining, in response to a first user addressing an electronic message to a second user, whether the second user is a member of an electronic messaging group that defines a plurality of member users, and if so, to address the electronic message to at least one additional member user in the electronic messaging group. The automated creation of electronic messaging groups is also supported by addressing an electronic message to a plurality of recipient users in response to user input, and automatically creating a new electronic messaging group including the plurality of recipient users. Furthermore, the automated updating of electronic messaging groups is supported by addressing an electronic message to an electronic messaging group including a plurality of member users in response to user input, selectively updating an address list for the electronic message in response to user input, and selectively updating the electronic messaging group based upon the updates to the address list.

(*) **Notice:** Subject to any disclaimer, the term of this patent is extended or adjusted under 35 U.S.C. 154(b) by 0 days.

(21) **Appl. No.:** **09/096,243**

(22) **Filed:** **Jun. 11, 1998**

(51) **Int. Cl.⁷** **G06F 19/00**

(52) **U.S. Cl.** **709/200; 709/206**

(58) **Field of Search** **709/203, 206, 709/200; 707/3-5, 10**

(56) **References Cited**

U.S. PATENT DOCUMENTS

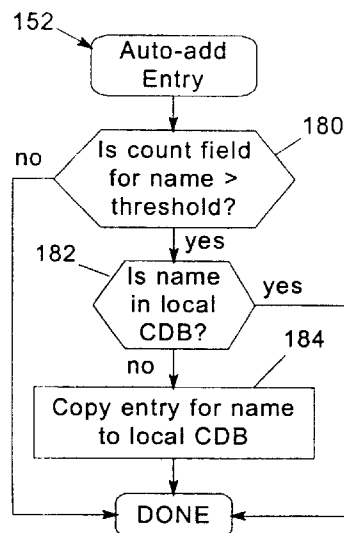
- 5,870,744 * 2/1999 Sprague 707/9
- 5,913,032 * 6/1999 Schwartz et al. 709/213
- 5,999,932 * 12/1999 Paul 707/10
- 6,026,396 * 2/2000 Hall 707/4

OTHER PUBLICATIONS

Robert Kass et al., "Intelligent Assistance for the Communication of Information in Large Organizations," Proceedings of the Eighth Conference on Artificial Intelligence for Application CAIA, pp. 171-178, 1992.*
Thomas Malone et al., "The Information Lens: An Intelligent System for Information Sharing and Coordination," (M.H. Olsen (Ed.)) Technological Support for Work Group Collaboration, pp. 65-88, 1989.*

* cited by examiner

8 Claims, 9 Drawing Sheets



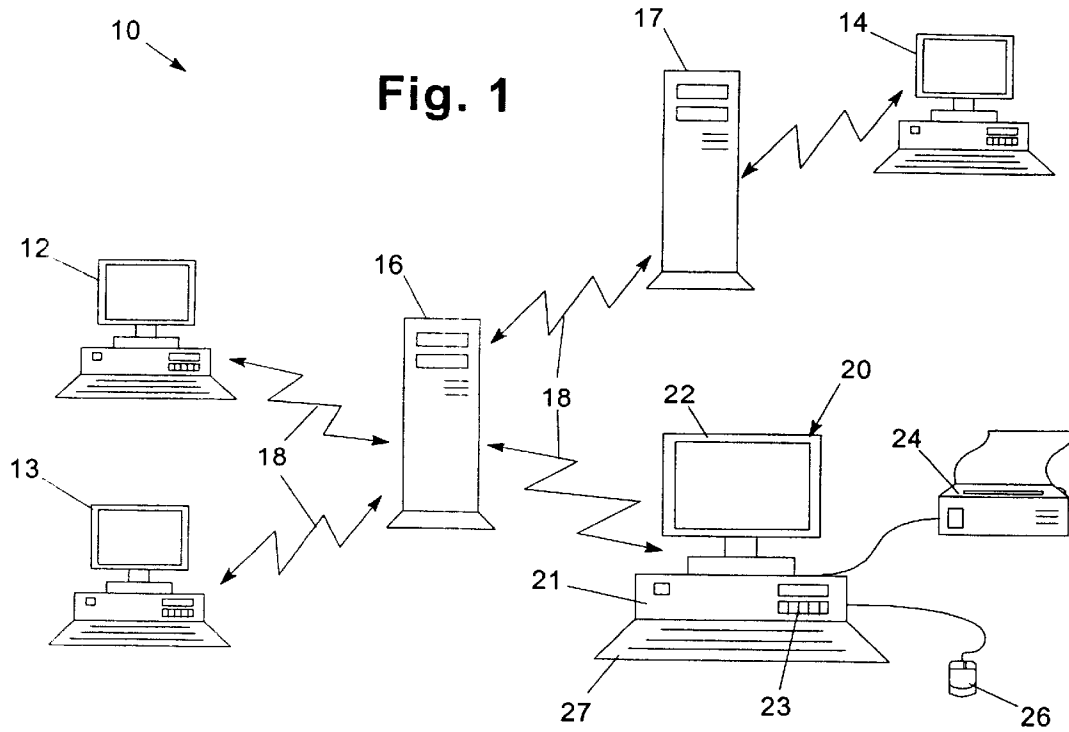


Fig. 1

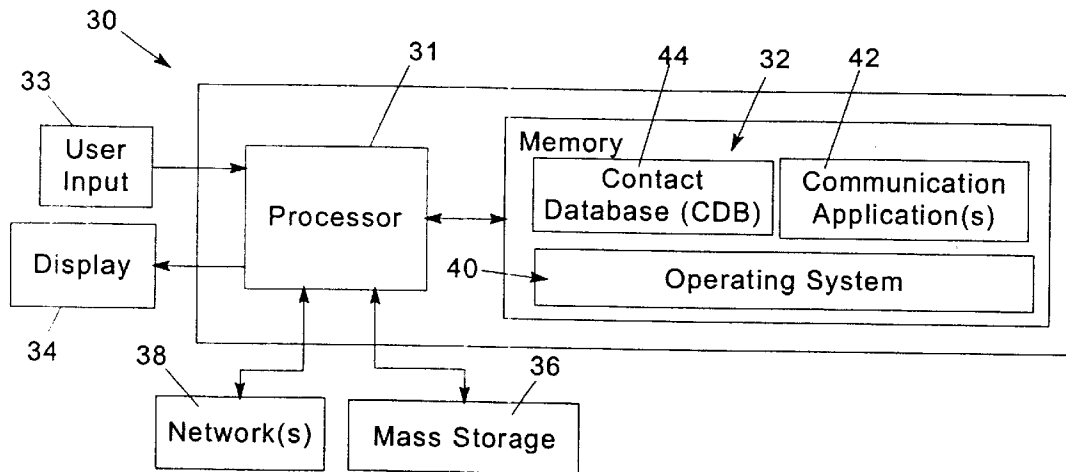


Fig. 2

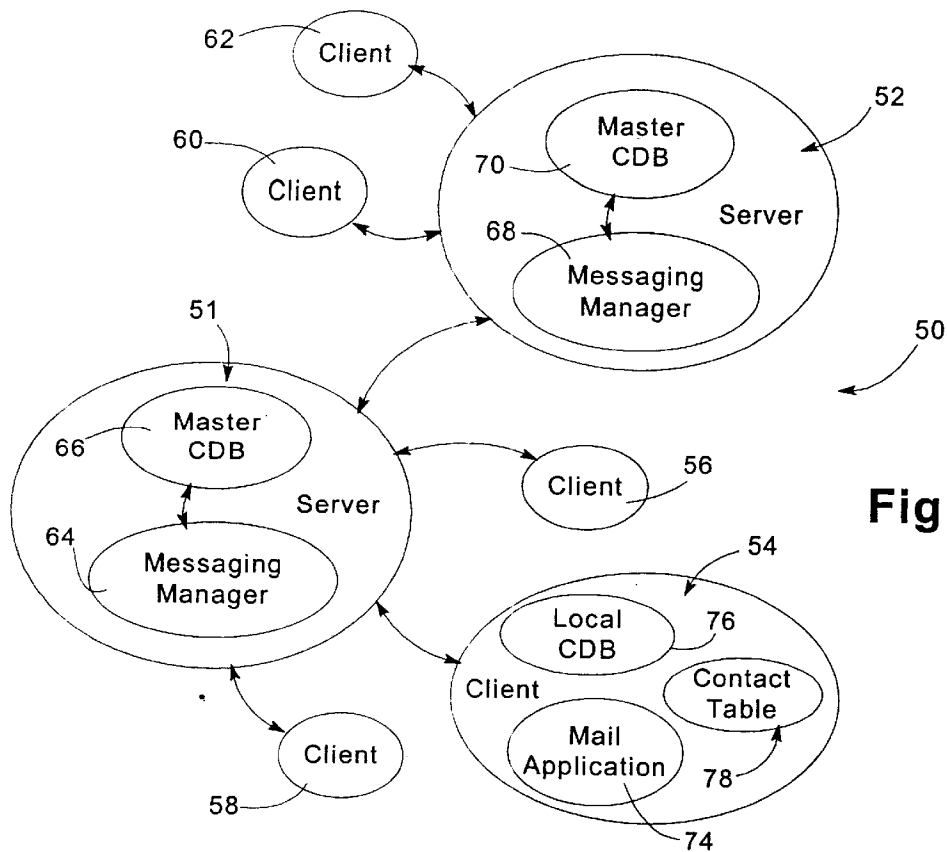


Fig. 3

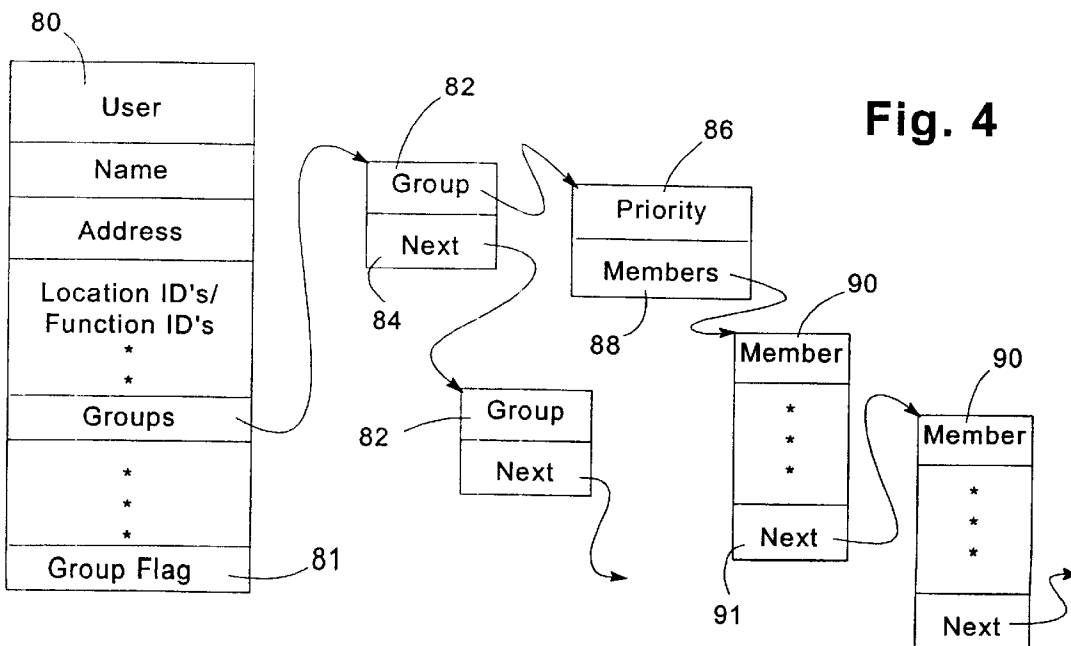


Fig. 4

Name	Count	Location/Functional ID's
Doe, Jane	3	Rochester, Engineer
Public, John Q.	5	San Jose, Lawyer
*	96	98

Fig. 5

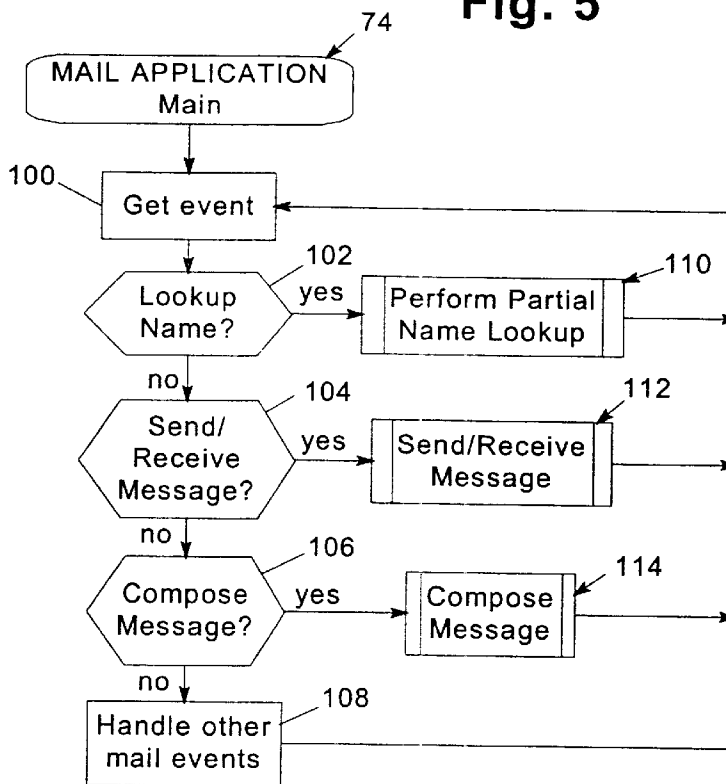


Fig. 6

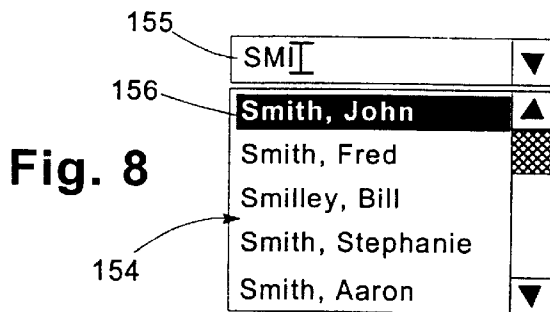


Fig. 8

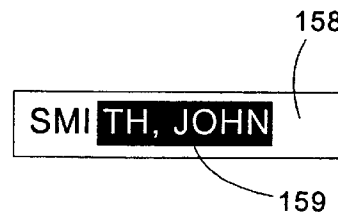
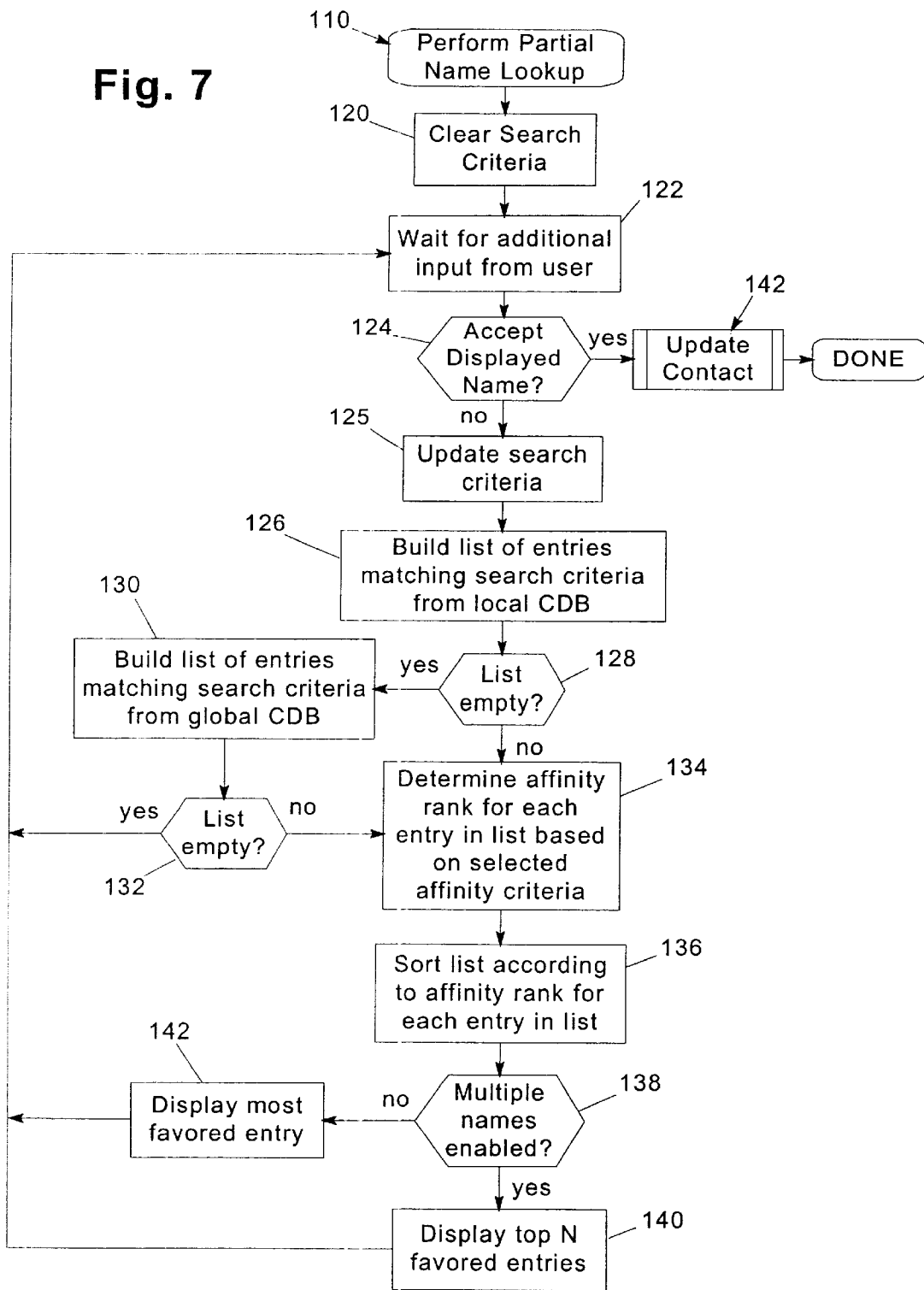


Fig. 9

Fig. 7



Explore Litigation Insights

Docket Alarm provides insights to develop a more informed litigation strategy and the peace of mind of knowing you're on top of things.

Real-Time Litigation Alerts



Keep your litigation team up-to-date with **real-time alerts** and advanced team management tools built for the enterprise, all while greatly reducing PACER spend.

Our comprehensive service means we can handle Federal, State, and Administrative courts across the country.

Advanced Docket Research



With over 230 million records, Docket Alarm's cloud-native docket research platform finds what other services can't. Coverage includes Federal, State, plus PTAB, TTAB, ITC and NLRB decisions, all in one place.

Identify arguments that have been successful in the past with full text, pinpoint searching. Link to case law cited within any court document via Fastcase.

Analytics At Your Fingertips



Learn what happened the last time a particular judge, opposing counsel or company faced cases similar to yours.

Advanced out-of-the-box PTAB and TTAB analytics are always at your fingertips.

API

Docket Alarm offers a powerful API (application programming interface) to developers that want to integrate case filings into their apps.

LAW FIRMS

Build custom dashboards for your attorneys and clients with live data direct from the court.

Automate many repetitive legal tasks like conflict checks, document management, and marketing.

FINANCIAL INSTITUTIONS

Litigation and bankruptcy checks for companies and debtors.

E-DISCOVERY AND LEGAL VENDORS

Sync your system to PACER to automate legal marketing.