

United States Patent [19]

[11] Patent Number: **5,758,313**

Shah et al.

[45] Date of Patent: **May 26, 1998**

[54] **METHOD AND APPARATUS FOR TRACKING VEHICLE LOCATION**

[75] Inventors: **Mukesh Chamanlal Shah, Lake Oswego, Oreg.; Sanjiv Prabhakaran, San Jose, Calif.**

[73] Assignee: **Mobile Information Systems, Inc., Sunnyvale, Calif.**

5,140,532	8/1992	Beckwith, Jr. et al.	395/101
5,155,689	10/1992	Wortham	364/460
5,243,530	9/1993	Stanifer et al.	364/452
5,272,638	12/1993	Martin et al.	364/444
5,334,974	8/1994	Simms et al.	340/990
5,428,546	6/1995	Shah et al.	364/449
5,487,139	1/1996	Saylor et al.	395/135
5,604,676	2/1997	Penzias	364/464.27

[21] Appl. No.: **443,063**

[22] Filed: **May 17, 1995**

(Under 37 CFR 1.47)

Related U.S. Application Data

[63] Continuation-in-part of Ser. No. 961,736, Oct. 16, 1992, Pat. No. 5,428,546.

[51] Int. Cl.⁶ **G06F 165/00; G01C 21/00**

[52] U.S. Cl. **701/208; 340/990; 395/230**

[58] Field of Search **364/449, 460, 364/400, 401 R, 449.7, 449.2; 340/990, 995, 991; 342/357, 457; 395/153, 600, 234, 230, 226**

References Cited

U.S. PATENT DOCUMENTS

4,660,037	4/1987	Nakamura et al.	340/990
4,924,402	5/1990	Ando et al.	364/449
4,954,959	9/1990	Moroto et al.	364/449
5,003,317	3/1991	Gray et al.	342/457
5,067,081	11/1991	Person	364/444

OTHER PUBLICATIONS

Allen, David P., "Here Be Dragons" *CD-ROM EndUser*, Mar. 1990.

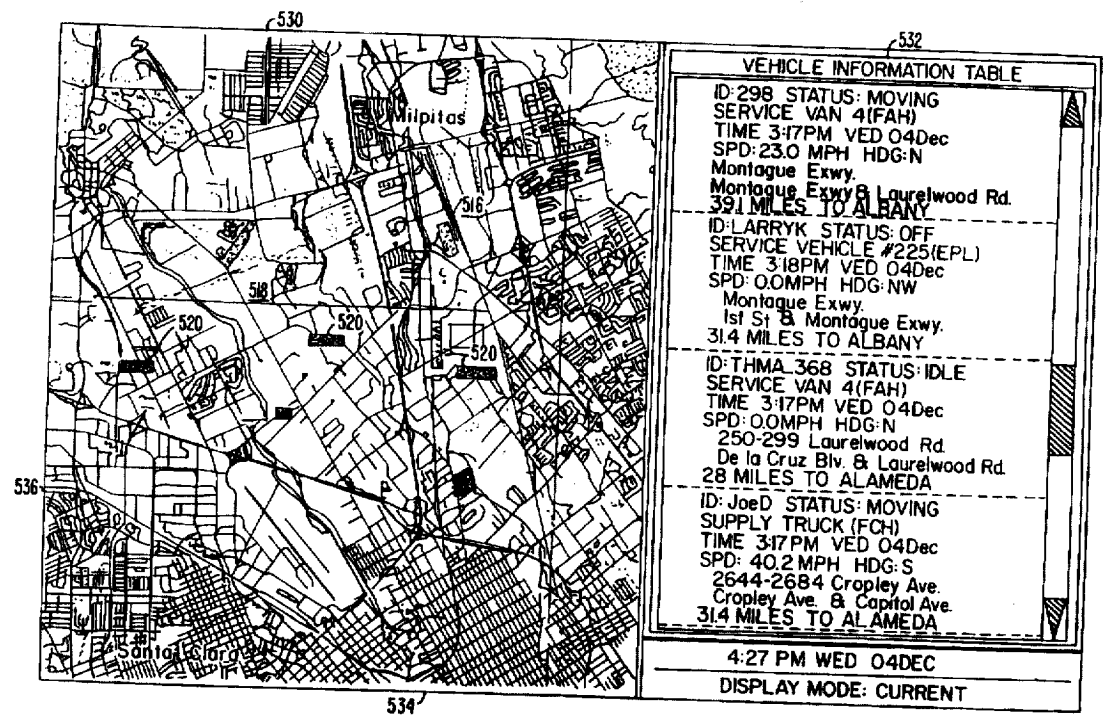
Sena, Michael L., "Computer-Aided Dispatching." *Computer Graphics World*, PennWell (publ.), May 1990.

Primary Examiner—Michael Zanelli
Attorney, Agent, or Firm—Townsend and Townsend and Crew LLP; Richard T. Ogawa

ABSTRACT

[57] A method computer aided dispatching. The present method includes providing a display **510** having a first display segment **530**. The first display segment **530** includes a digitized representation of a selected area from a raster map, intelligent area data superimposed upon the selected area to provide intelligence, and a user locatable mark **520**. The user locatable mark **520** defines a mobile unit position based upon a first value and a second value. The present method also includes using a dispatch system **811** operably coupled to the display. The dispatch system **811** includes order data from customers. A portion of the order data is transferred from a data acquisition **801, 808** device to the mobile unit **610**.

160 Claims, 10 Drawing Sheets



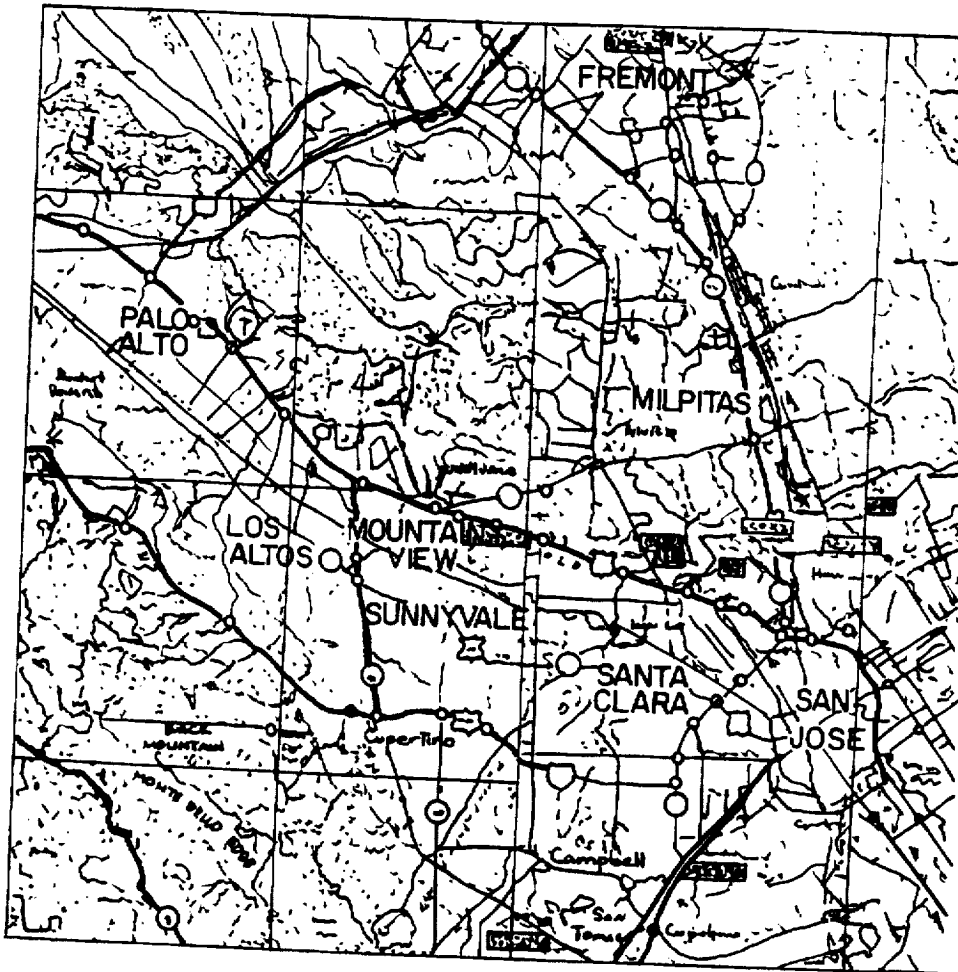


FIG. 1. PRIOR ART

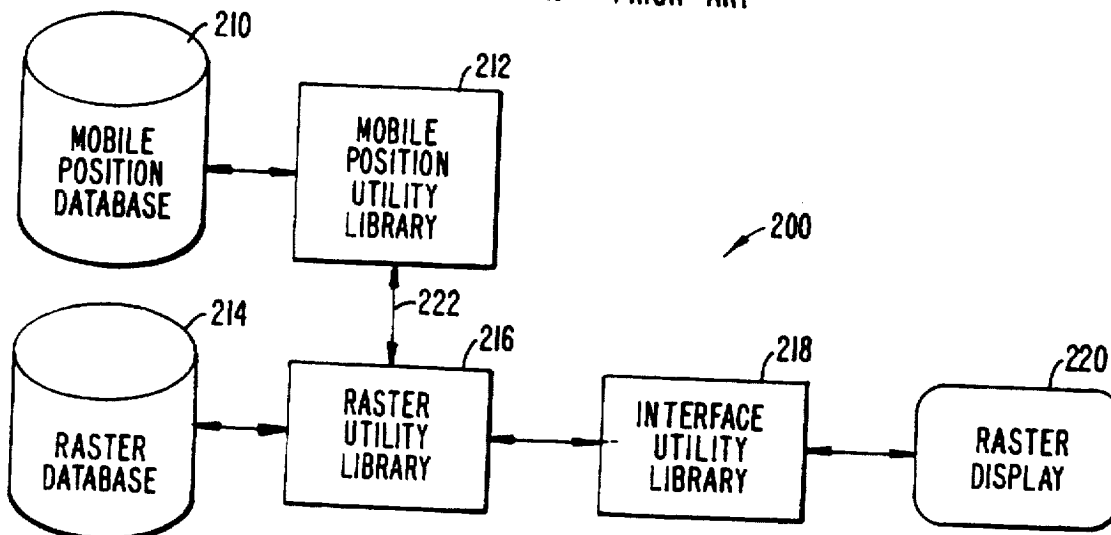


FIG. 2. PRIOR ART

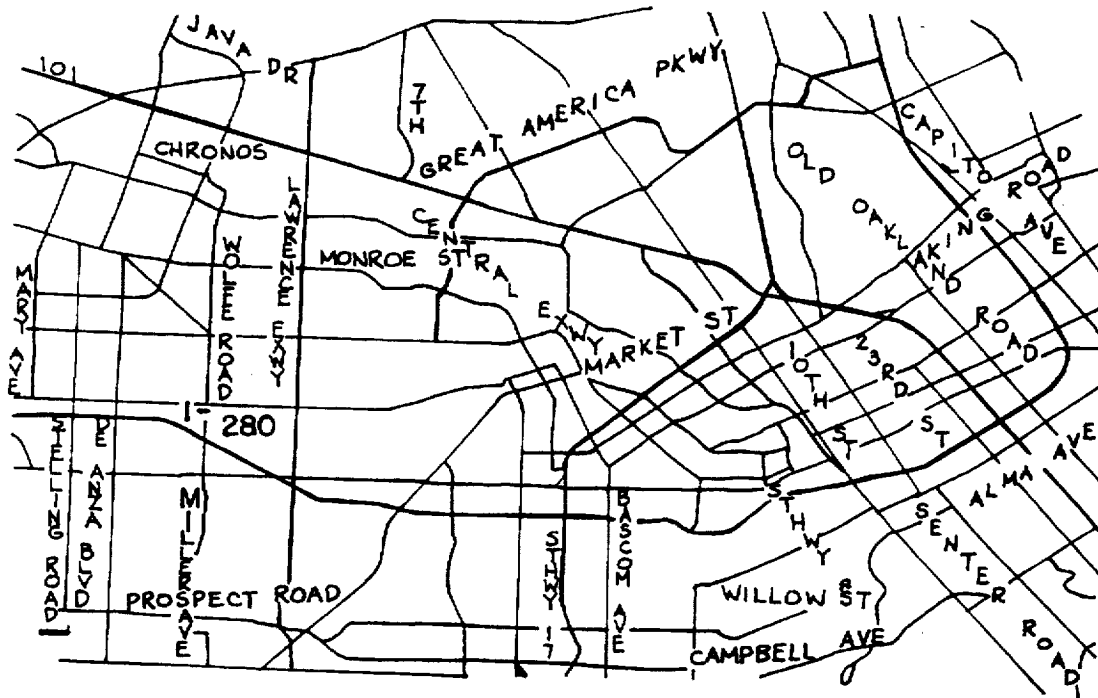


FIG. 3. PRIOR ART

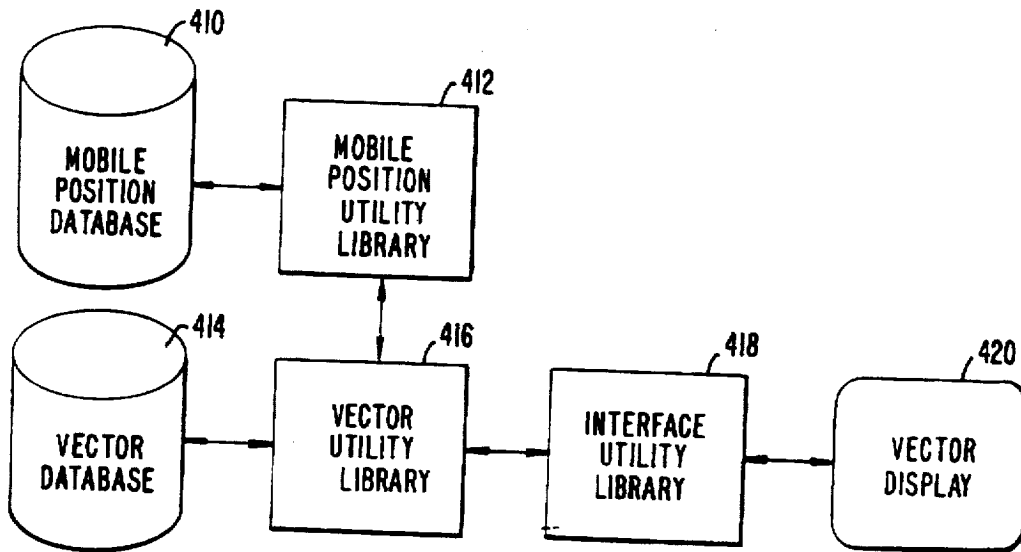


FIG. 4. PRIOR ART

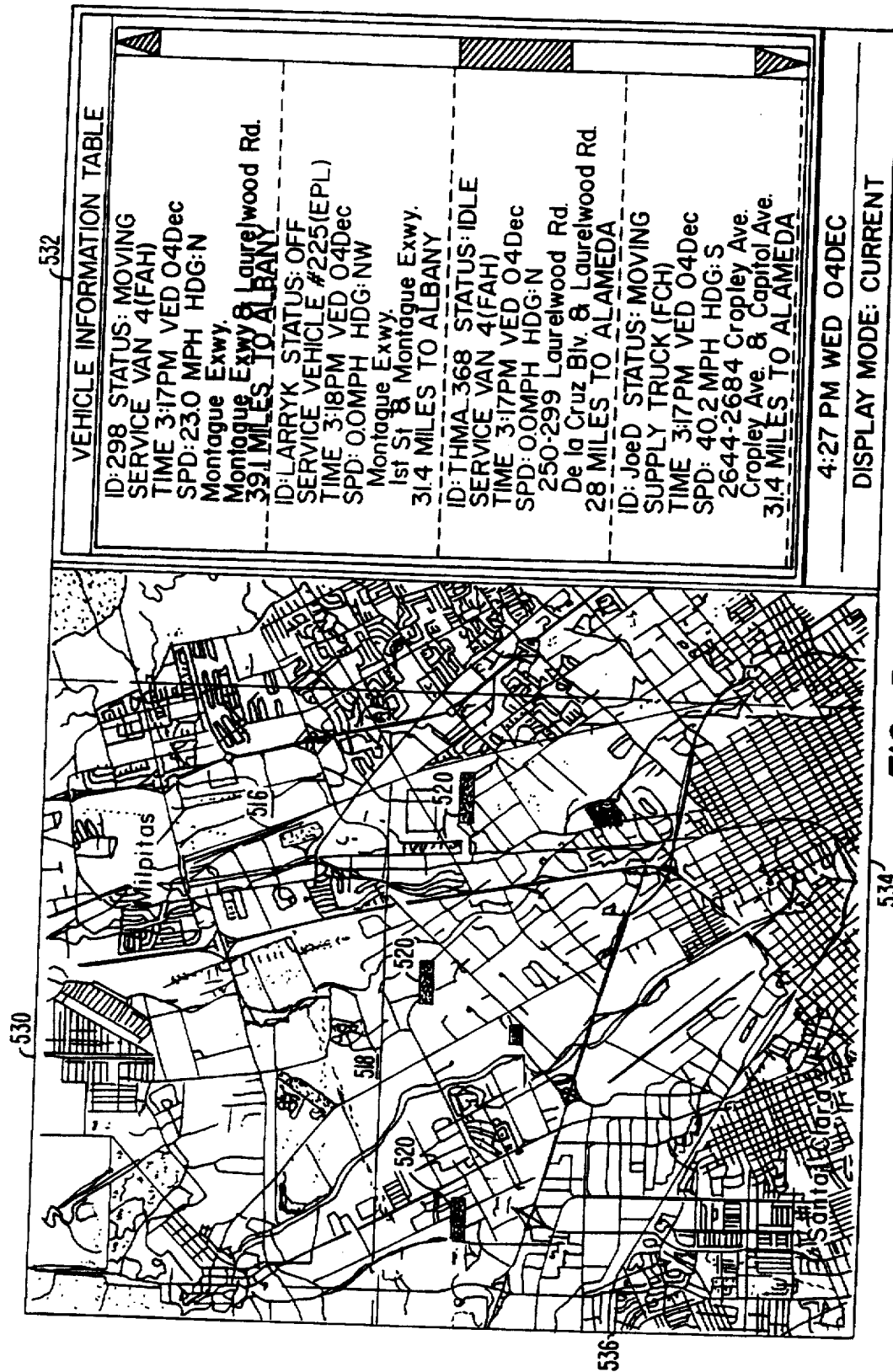


FIG. 5.

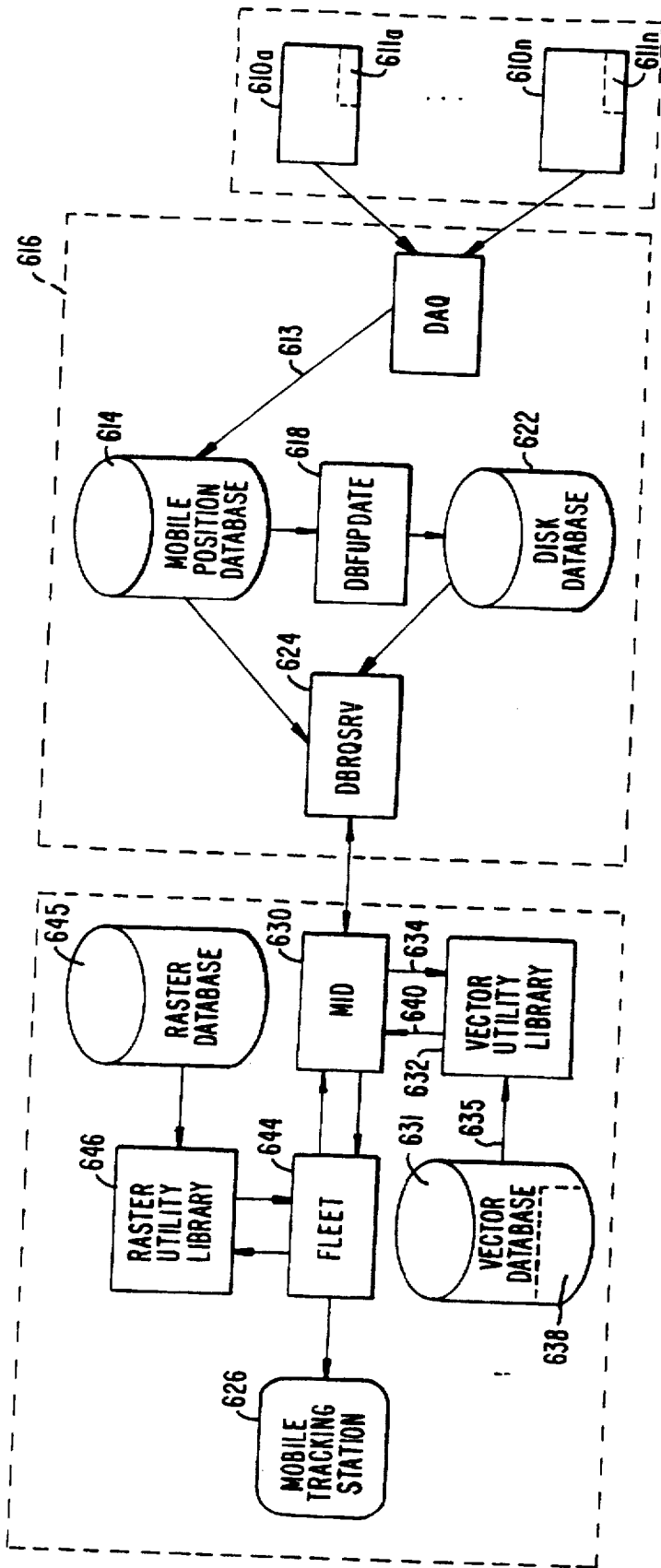


FIG. 6.

Explore Litigation Insights

Docket Alarm provides insights to develop a more informed litigation strategy and the peace of mind of knowing you're on top of things.

Real-Time Litigation Alerts



Keep your litigation team up-to-date with **real-time alerts** and advanced team management tools built for the enterprise, all while greatly reducing PACER spend.

Our comprehensive service means we can handle Federal, State, and Administrative courts across the country.

Advanced Docket Research



With over 230 million records, Docket Alarm's cloud-native docket research platform finds what other services can't. Coverage includes Federal, State, plus PTAB, TTAB, ITC and NLRB decisions, all in one place.

Identify arguments that have been successful in the past with full text, pinpoint searching. Link to case law cited within any court document via Fastcase.

Analytics At Your Fingertips



Learn what happened the last time a particular judge, opposing counsel or company faced cases similar to yours.

Advanced out-of-the-box PTAB and TTAB analytics are always at your fingertips.

API

Docket Alarm offers a powerful API (application programming interface) to developers that want to integrate case filings into their apps.

LAW FIRMS

Build custom dashboards for your attorneys and clients with live data direct from the court.

Automate many repetitive legal tasks like conflict checks, document management, and marketing.

FINANCIAL INSTITUTIONS

Litigation and bankruptcy checks for companies and debtors.

E-DISCOVERY AND LEGAL VENDORS

Sync your system to PACER to automate legal marketing.