

PATENT OWNER'S DEMONSTRATIVE EXHIBITS

IPR 2014-00191

U.S. Patent 7,837,736

Claims 21, 22, 31-36

Oral Hearing January 9, 2014, 10 A.M.

BSI Exhib
Zimmer H
Bonutti Sk
LLC
Trial: IPR2

SOLE ISSUE IN THIS PROCEEDING:

WHETHER PETITIONER HAS PROVE
PREPONDERANCE OF THE EVIDENCE
THAT CLAIMS 21, 22, AND 31-36 ARE
ANTICIPATED BY WALKER

(Paper 25, PO Resp., p. 2)

Claim 22 of the '736 patent

15. A device to replace an articulating surface of a first side of a joint in a body, the joint having first and second sides, comprising:

a base component, including a bone contacting side connectable with bone on the first side of the joint, and a base sliding side on an opposite side of said base component relative to said bone contacting side;

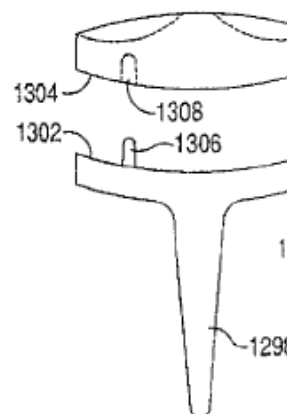
a movable component, including a movable sliding side, said movable sliding side being matably positionable in sliding engagement with said base sliding side, and an articulating side on an opposite side of said movable component relative to said movable sliding side, shaped to matingly engage an articulating surface of the second side of the joint;

a protrusion extending from one of said base sliding side or movable sliding side, said protrusion substantially offset with respect to a midline of the first side of a joint;

a recess sized to receive said protrusion, disposed in the other of said base sliding side or movable sliding side, said protrusion and recess matably to constrain movement of said first and second components relative to each other, thereby promoting movement of the joint within desired anatomical limits.

22. The device of claim 15, said protrusion is a pin and said recess is a hole sized to receive said pin.

Fig. 90



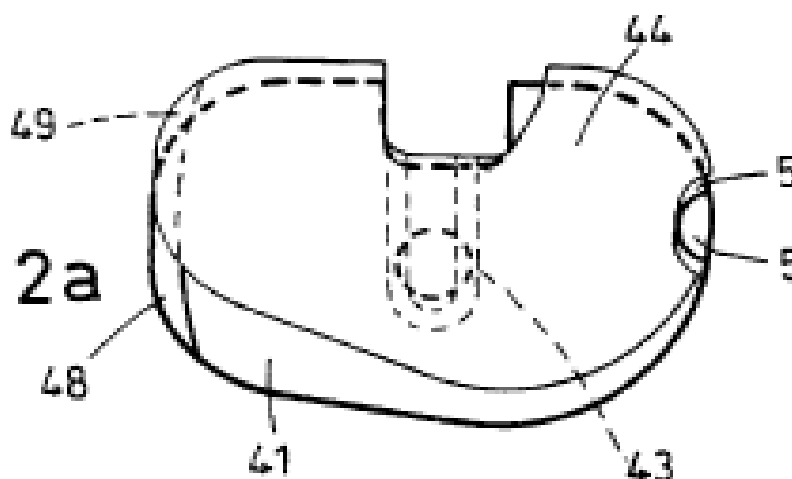
(Paper 25, PO Resp., pp. 3, 7-8, Exh. 1001)

CLAIM 22

"15. . . . a protrusion extending from one of said base sliding side or movable sliding side, said protrusion substantially offset with respect to a midline of the first side of a joint; a recess sized to receive said protrusion, disposed in the other of said base sliding side or movable sliding side

22. . . . wherein said protrusion is a pin, and said recess is a hole sized to receive said pin."

(Paper 25, PO Resp., pp. 7-8)

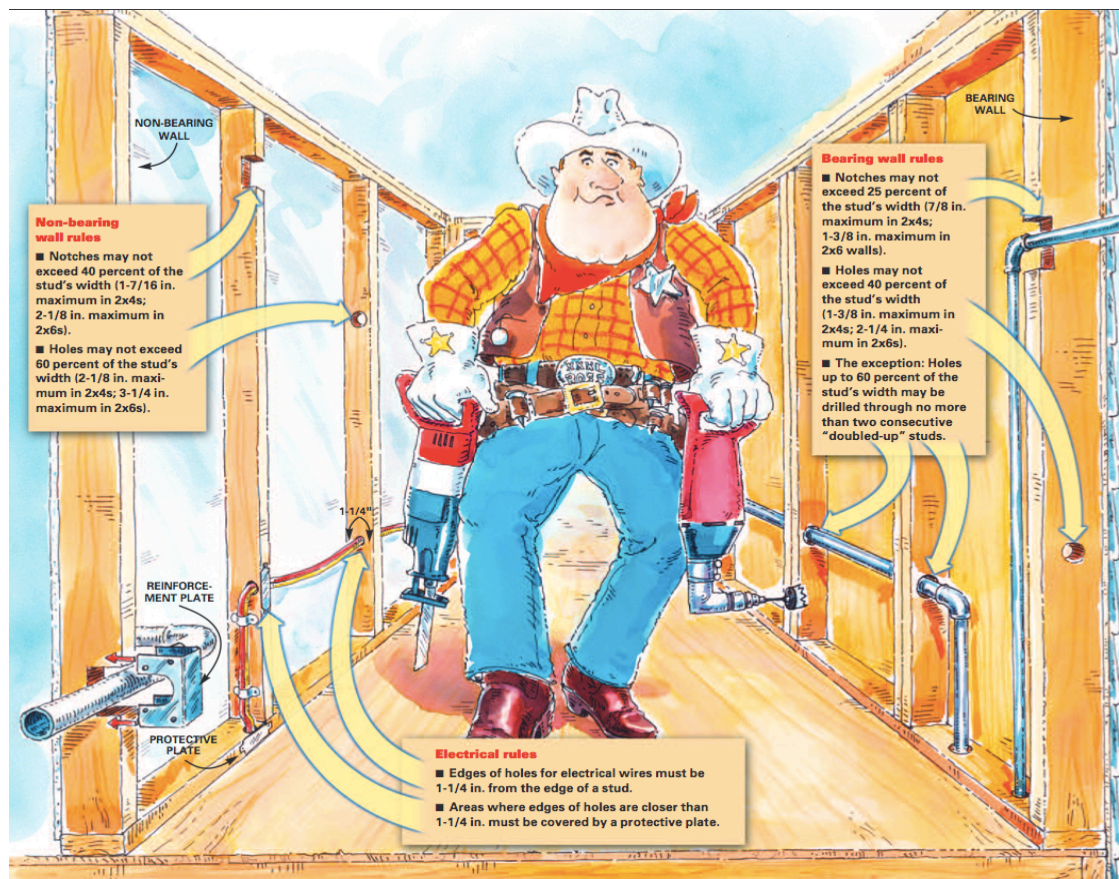


Tibial platform 41 includes an "upstanding rail 48", and "a semicircular abutment 51 upstanding at the medial side of the platform". Meniscal component 44 includes a "slot 44" that receives the stud 42, "a recess 49" that extends with the rail 48, and "a recess or notch 51 that is rounded."

(Paper 25, PO Resp., p. 7)(citations omitted)

A NOTCH IS NOT A HOLE OR CA

EVEN CONSIDERED UNDER THE BROADEST REASONABLE CONSTRUCTION STANDARD



(Paper 25, PO Resp., p. 11 and p. 13, Exh. 2003)

Explore Litigation Insights

Docket Alarm provides insights to develop a more informed litigation strategy and the peace of mind of knowing you're on top of things.

Real-Time Litigation Alerts



Keep your litigation team up-to-date with **real-time alerts** and advanced team management tools built for the enterprise, all while greatly reducing PACER spend.

Our comprehensive service means we can handle Federal, State, and Administrative courts across the country.

Advanced Docket Research



With over 230 million records, Docket Alarm's cloud-native docket research platform finds what other services can't. Coverage includes Federal, State, plus PTAB, TTAB, ITC and NLRB decisions, all in one place.

Identify arguments that have been successful in the past with full text, pinpoint searching. Link to case law cited within any court document via Fastcase.

Analytics At Your Fingertips



Learn what happened the last time a particular judge, opposing counsel or company faced cases similar to yours.

Advanced out-of-the-box PTAB and TTAB analytics are always at your fingertips.

API

Docket Alarm offers a powerful API (application programming interface) to developers that want to integrate case filings into their apps.

LAW FIRMS

Build custom dashboards for your attorneys and clients with live data direct from the court.

Automate many repetitive legal tasks like conflict checks, document management, and marketing.

FINANCIAL INSTITUTIONS

Litigation and bankruptcy checks for companies and debtors.

E-DISCOVERY AND LEGAL VENDORS

Sync your system to PACER to automate legal marketing.