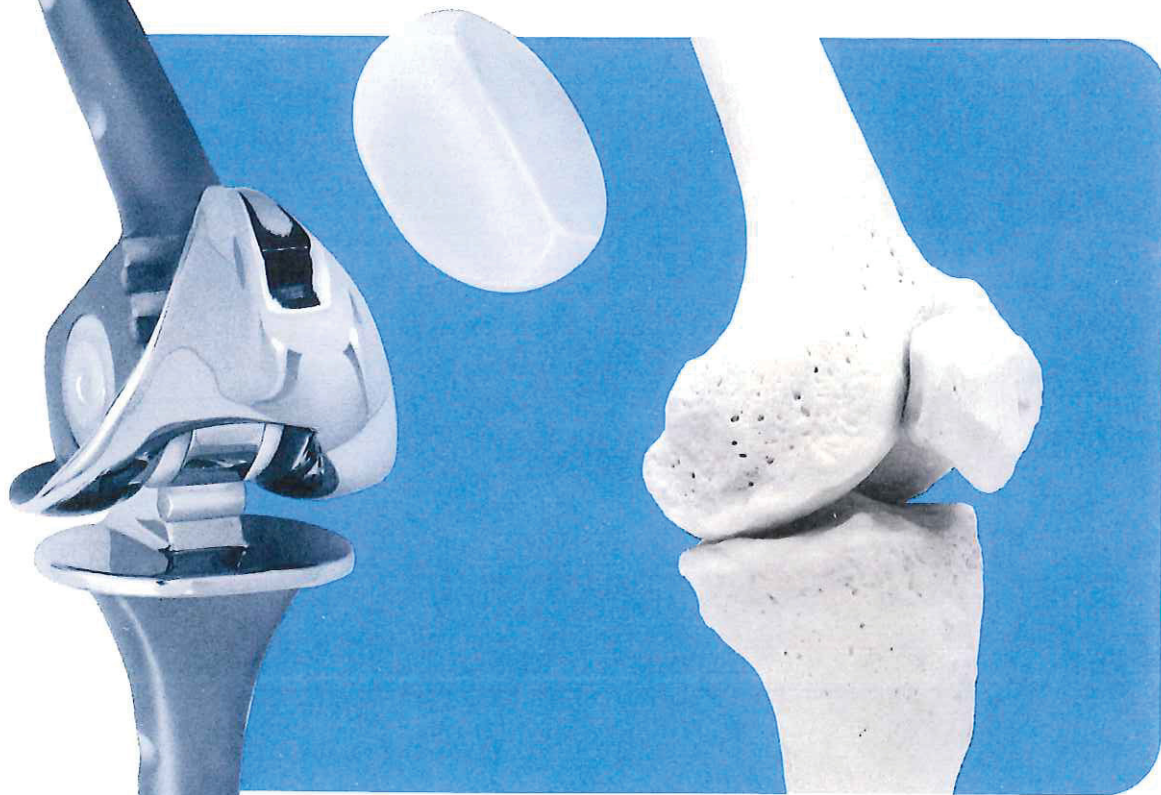


Richards Intracondylar Knee



Another Alternative

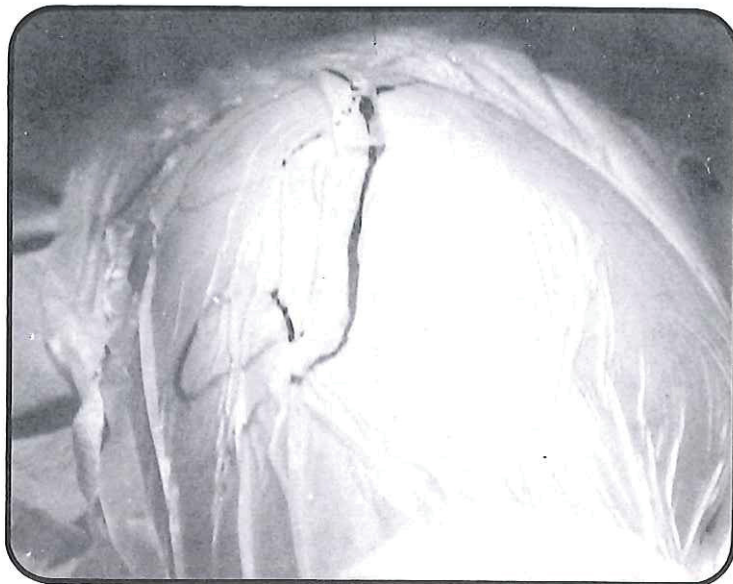
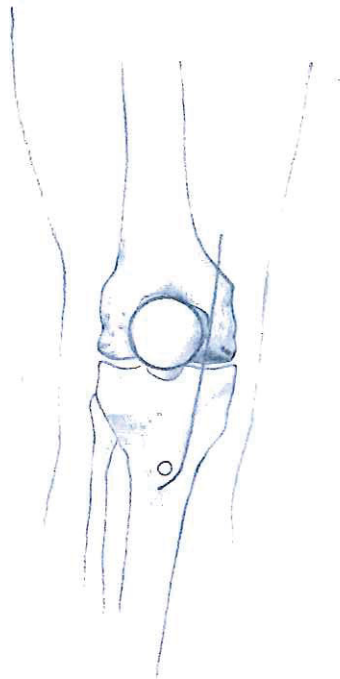


Richards Intracondylar Knee

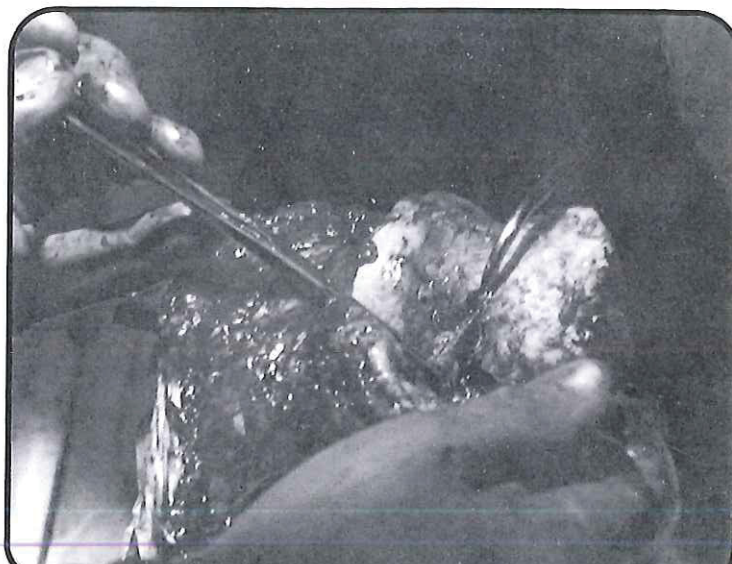
Technique as described by Charles O. Bechtol, M.D., Los Angeles, California



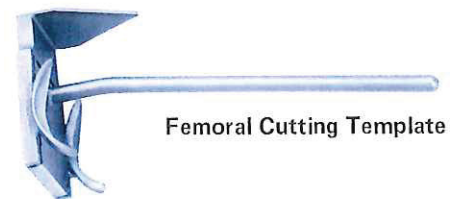
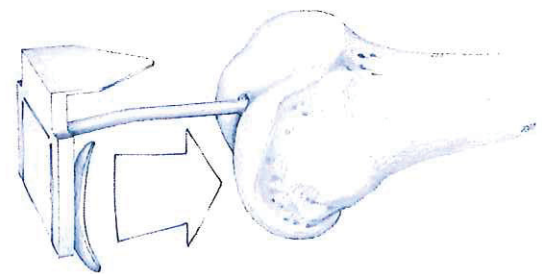
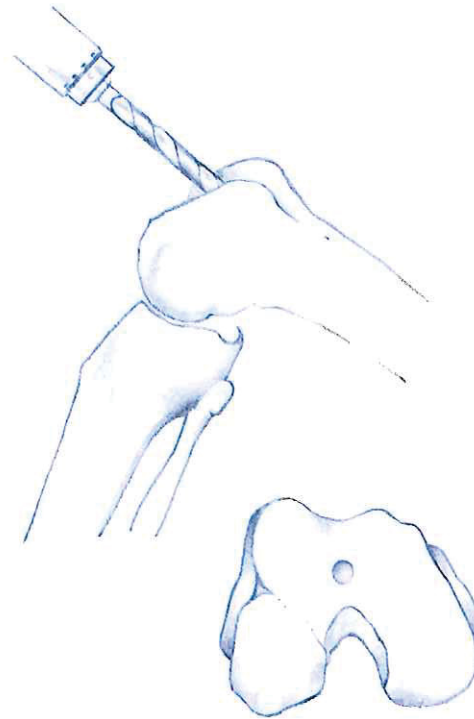
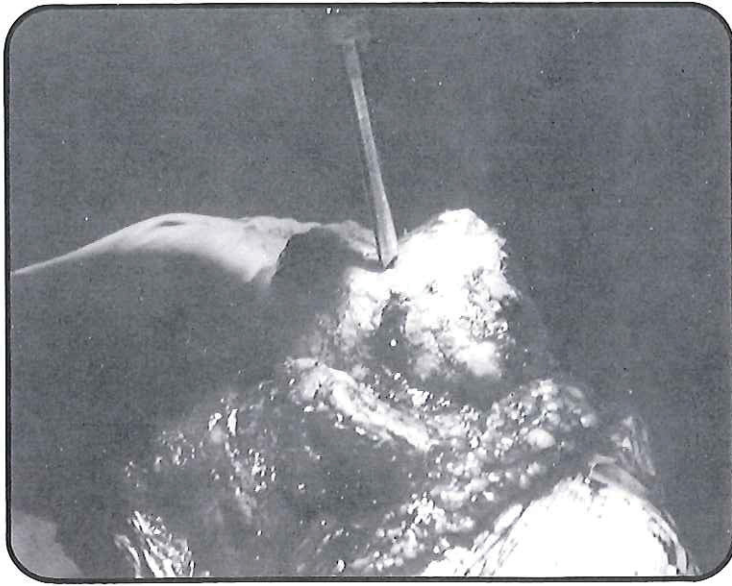
1. After routine skin preparation, the leg is draped in the usual manner. If a tourniquet is used, the leg is exsanguinated with a Tourniwrap™ ; with the knee in 60° to 90° flexion, the tourniquet is inflated. A median para-patellar incision is recommended.



2. After dissection and joint debridement, the knee is flexed to 90°. All osteophytes on the tibia, femur and patella should be removed. The medial and lateral collateral ligaments should be divided at their origin from the femur. The cruciate ligaments should be divided. This allows improved exposure of both tibial and femoral surfaces. The capsule must be freed laterally and posteriorly to allow good mobility of both femur and tibia.

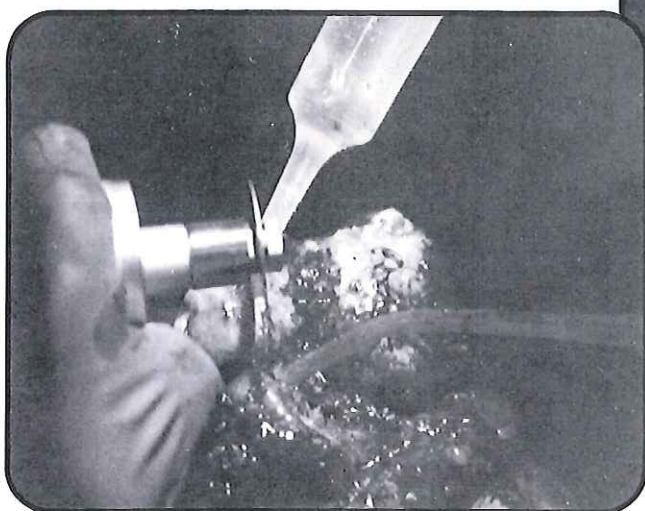
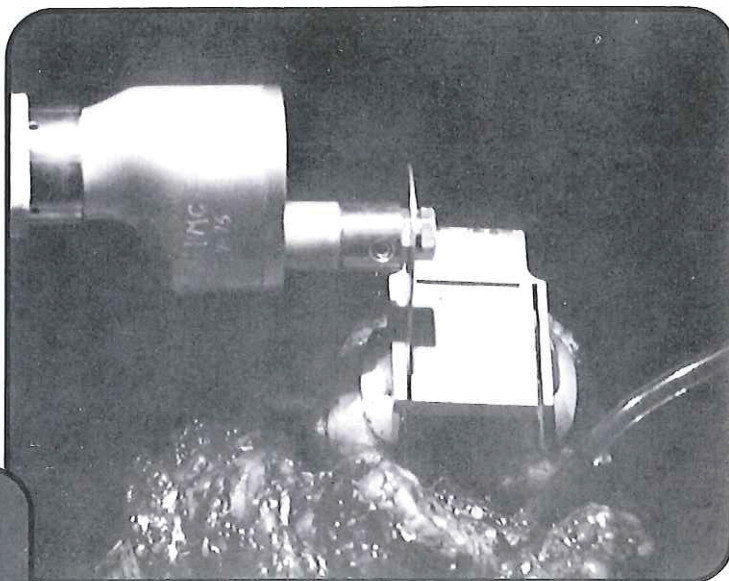
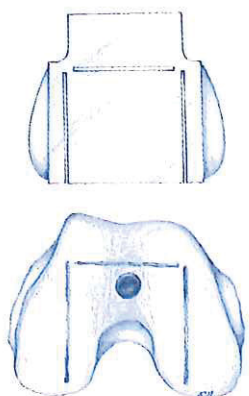


3. A 5/16" diameter hole is drilled directly up into the femoral shaft through the central patellar facet of the femur.



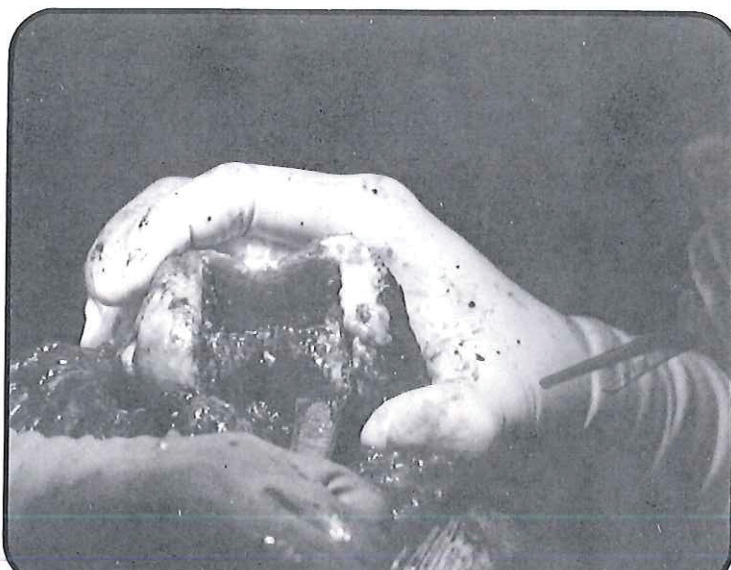
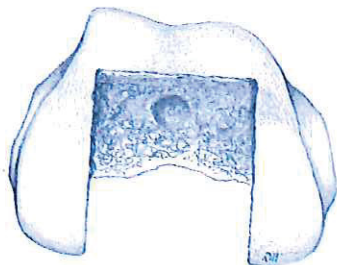
4. The Femoral Cutting Guide is inserted completely into the hole with the V-shaped portion of the guide positioned anteriorly on the femur.

5. The Femoral Cutting Guide has cutting slots to guide a power saw or thin-bladed osteotome. The slots are spaced apart the same width as the femoral component.



6. Once the initial cuts have been made, the Femoral Cutting Guide is removed and the cuts are completed. The saw blade should be kept cool with saline.

7. It is necessary to remove the posterior cortex layer of the femoral condyles the same width as the guiding cuts.



Explore Litigation Insights

Docket Alarm provides insights to develop a more informed litigation strategy and the peace of mind of knowing you're on top of things.

Real-Time Litigation Alerts



Keep your litigation team up-to-date with **real-time alerts** and advanced team management tools built for the enterprise, all while greatly reducing PACER spend.

Our comprehensive service means we can handle Federal, State, and Administrative courts across the country.

Advanced Docket Research



With over 230 million records, Docket Alarm's cloud-native docket research platform finds what other services can't. Coverage includes Federal, State, plus PTAB, TTAB, ITC and NLRB decisions, all in one place.

Identify arguments that have been successful in the past with full text, pinpoint searching. Link to case law cited within any court document via Fastcase.

Analytics At Your Fingertips



Learn what happened the last time a particular judge, opposing counsel or company faced cases similar to yours.

Advanced out-of-the-box PTAB and TTAB analytics are always at your fingertips.

API

Docket Alarm offers a powerful API (application programming interface) to developers that want to integrate case filings into their apps.

LAW FIRMS

Build custom dashboards for your attorneys and clients with live data direct from the court.

Automate many repetitive legal tasks like conflict checks, document management, and marketing.

FINANCIAL INSTITUTIONS

Litigation and bankruptcy checks for companies and debtors.

E-DISCOVERY AND LEGAL VENDORS

Sync your system to PACER to automate legal marketing.