



US005275157A

United States Patent [19]
Morgan et al.

[11] **Patent Number:** **5,275,157**
[45] **Date of Patent:** **Jan. 4, 1994**

- [54] **PULSE FORMING CIRCUITS**
- [75] **Inventors:** **Carlton B. Morgan**, Bainbridge Island; **Daniel Yerkovich**; **Donald C. Maier**, both of Seattle, all of Wash.
- [73] **Assignee:** **Physio-Control Corporation**, Redmond, Wash.
- [21] **Appl. No.:** **685,132**
- [22] **Filed:** **Apr. 12, 1991**
- [51] **Int. Cl.:** **A61N 1/00**
- [52] **U.S. Cl.:** **607/6**
- [58] **Field of Search** 128/419; 307/540, 545, 307/547, 549, 631; 338/22; 307/310, 264

perature effects, and triggering behavior, Journal of Applied Physics 61(6), Mar. 15 1987, pp. 2381-2386.
R. Ford et al., *Application of Non-linear Resistors to Inductive Switching*, IEEE Transactions on Electrical Insulation, vol. E1-20 No. 1, Feb. 1985, pp. 29-37.

Primary Examiner—Lee S. Cohen
Assistant Examiner—Samuel G. Gilbert
Attorney, Agent, or Firm—Christensen, O'Connor, Johnson & Kindness

- [56] **References Cited**
- U.S. PATENT DOCUMENTS**
- 3,078,850 2/1963 Schein et al. 128/419 D
- 3,219,942 11/1965 Bell 307/310 X
- 3,241,555 3/1966 Caywood et al. 128/419 D
- 3,359,984 12/1967 Daniher et al. 128/419 D
- 3,706,313 12/1972 Milani et al. 128/419 D
- 3,866,615 2/1975 Hewson 128/419 D
- 3,886,950 6/1975 Ukkestad et al. 128/419 D
- 4,155,017 5/1979 Gaule et al. 307/268
- 4,387,291 6/1983 Keppel 338/22 R X
- 4,463,268 7/1984 Levinson 307/106
- 4,504,773 3/1985 Suzuki et al. 128/419 D
- 4,566,457 1/1986 Stemple 128/419 D
- 4,574,810 3/1986 Lerman 128/419 D

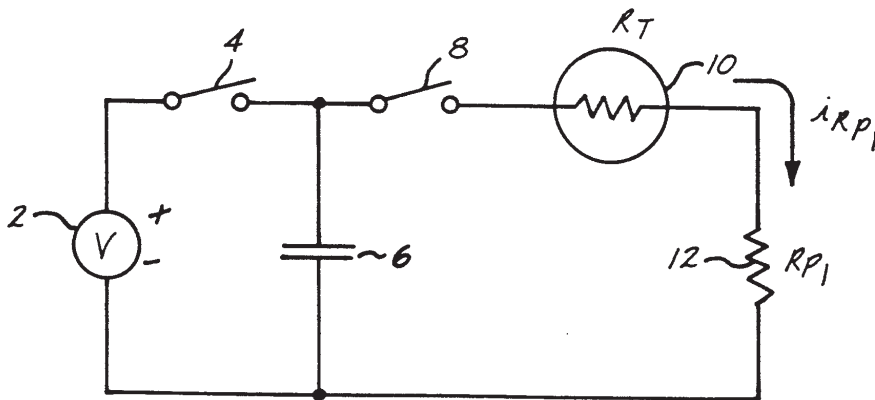
[57] **ABSTRACT**

Circuits for controlling the current flow of an energy pulse as a function of the temperature of a resistive element in the circuit so that the current flow varies over time in accordance with a predetermined waveform. The circuits include at least one negative temperature coefficient thermistor connected between an energy storage device and connectors for delivering energy stored in the storage source to an external load. In one embodiment of the invention the circuit includes a second thermistor for shunting a residual portion of the current delivered by an energy pulse away from the external load. In another embodiment of the circuit, a small inductive device is used for adjusting the shape of the predetermined waveform. In yet another embodiment of the device, a plurality of thermistors arranged in a bridge-like configuration are used to control the current of the energy pulse so that its waveform is biphasic. Heat sinks may be attached to the thermistors for cooling the latter so as to increase the rate at which energy pulses may be delivered by the circuits.

- FOREIGN PATENT DOCUMENTS**
- 1586973 3/1981 United Kingdom 128/419 D
- OTHER PUBLICATIONS**

R. Ford et al., *Positive temperature coefficient resistors as high-power pulse switches: performance limitations, tem-*

23 Claims, 6 Drawing Sheets



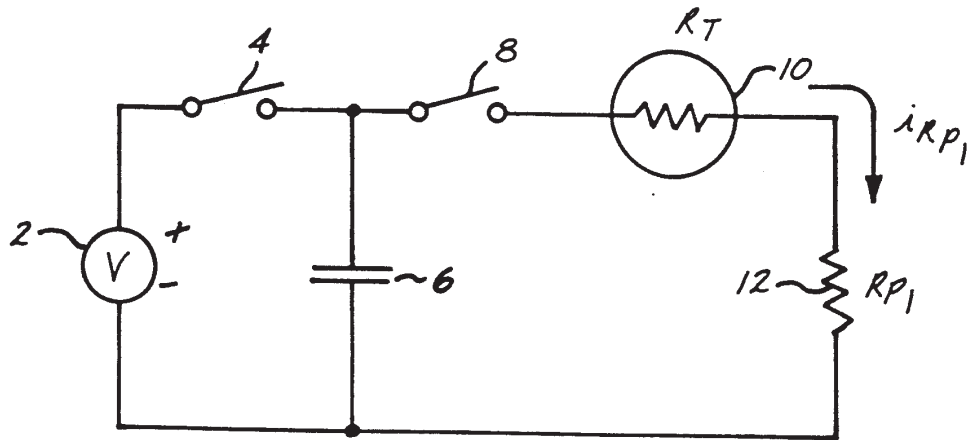


Fig. 1.

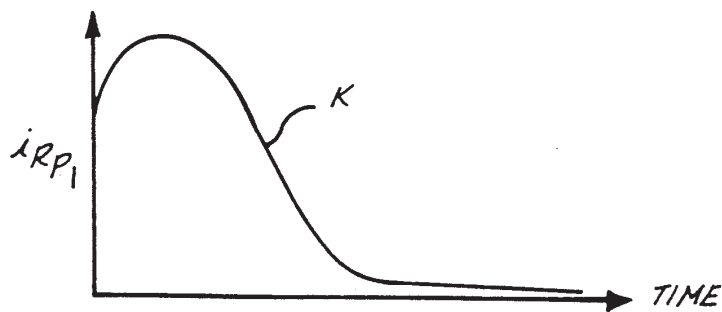


Fig. 2.

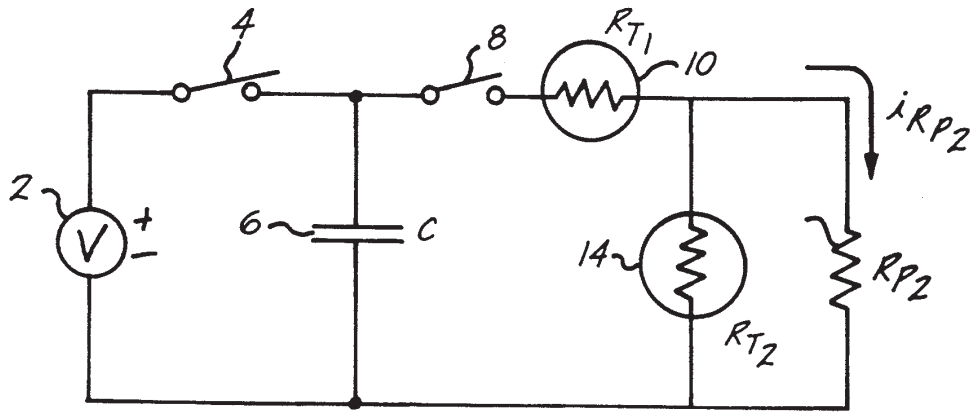


Fig. 3.

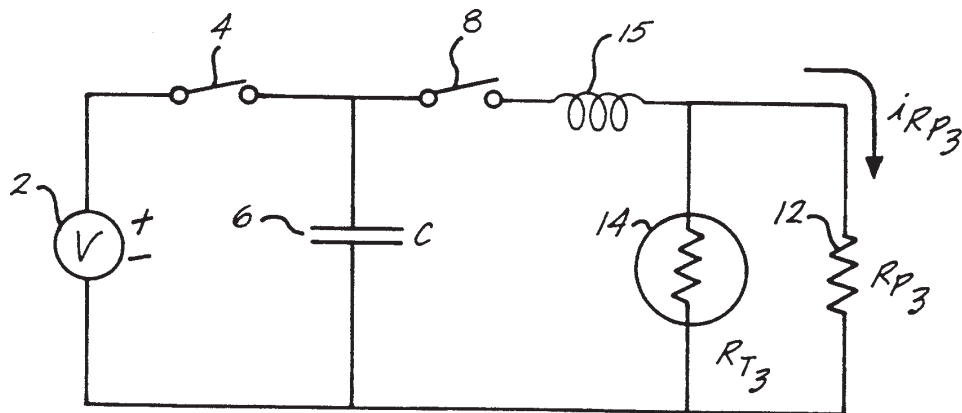


Fig. 3a.

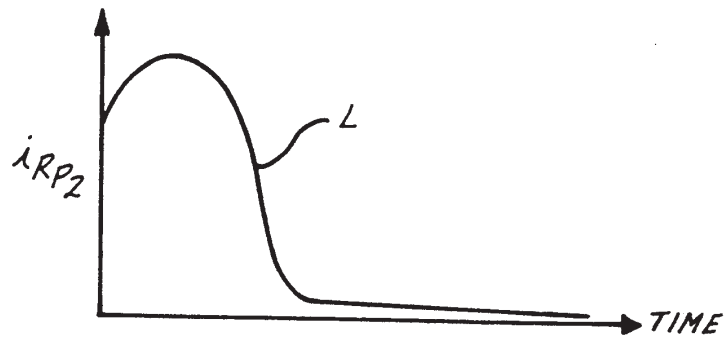


Fig. 4.

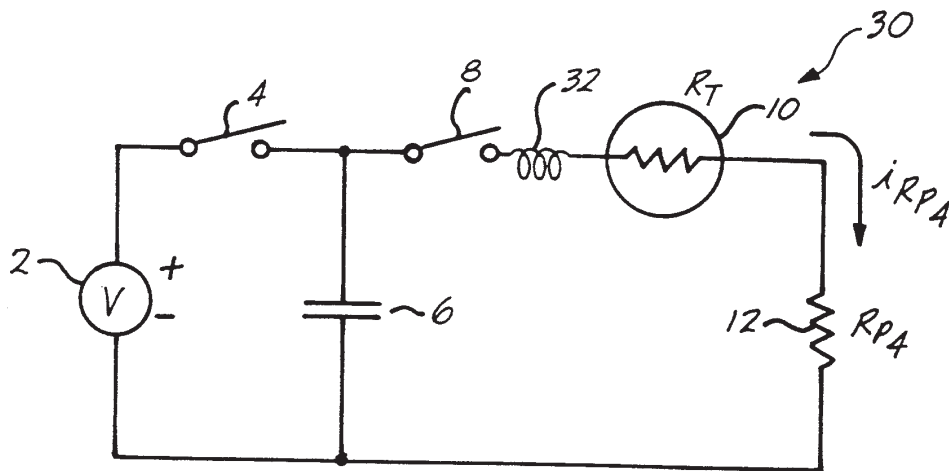


Fig. 5.

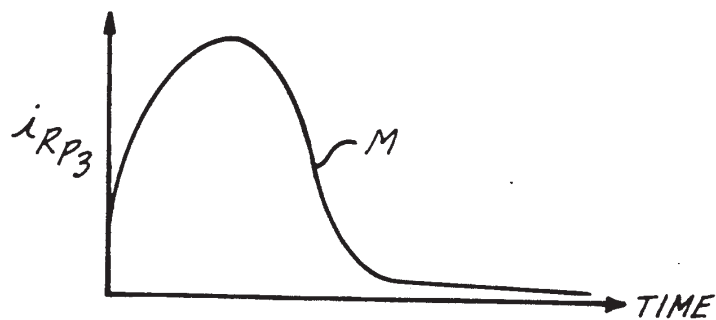


Fig. 6.

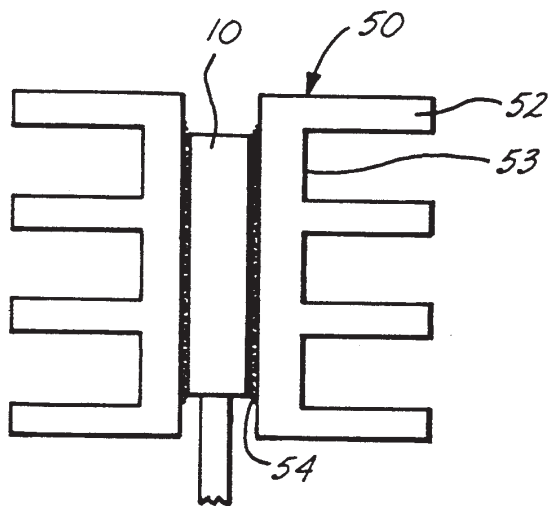


Fig. 7.

Explore Litigation Insights

Docket Alarm provides insights to develop a more informed litigation strategy and the peace of mind of knowing you're on top of things.

Real-Time Litigation Alerts



Keep your litigation team up-to-date with **real-time alerts** and advanced team management tools built for the enterprise, all while greatly reducing PACER spend.

Our comprehensive service means we can handle Federal, State, and Administrative courts across the country.

Advanced Docket Research



With over 230 million records, Docket Alarm's cloud-native docket research platform finds what other services can't. Coverage includes Federal, State, plus PTAB, TTAB, ITC and NLRB decisions, all in one place.

Identify arguments that have been successful in the past with full text, pinpoint searching. Link to case law cited within any court document via Fastcase.

Analytics At Your Fingertips



Learn what happened the last time a particular judge, opposing counsel or company faced cases similar to yours.

Advanced out-of-the-box PTAB and TTAB analytics are always at your fingertips.

API

Docket Alarm offers a powerful API (application programming interface) to developers that want to integrate case filings into their apps.

LAW FIRMS

Build custom dashboards for your attorneys and clients with live data direct from the court.

Automate many repetitive legal tasks like conflict checks, document management, and marketing.

FINANCIAL INSTITUTIONS

Litigation and bankruptcy checks for companies and debtors.

E-DISCOVERY AND LEGAL VENDORS

Sync your system to PACER to automate legal marketing.