

SIMPLICITY
4890 SIZE KK



SIMPLICITY PATTERN CO. INC., 2 PARK AVENUE, NEW YORK, NY 10016, USA
 DOMINION SIMPLICITY PATTERNS LTD., 495 FINCHdene SQUARE, EAST HALF (UNIT A), SCARBOROUGH, ONTARIO M1X 1B7, CANADA
 SIMPLICITY PATTERNS PTY. LTD., 25 VIOLET STREET, REVESSBY, NSW 2212, AUSTRALIA
 IMPORTADO Y DISTRIBUIDO POR: SIMPLICITY S.A. de C.V. PERIFERICO SUR NO. 5427 ESQ. 10 OTE. COL. ISIDRO PABELA MEXICO, D.F. 14039
 R.F.C. SIM - 950227 - TL1 TEL. Y FAX: 525-528-3094
 EXPORTADO POR: SIMPLICITY PATTERN CO., INC. 901 WAYNE STREET NILES, MI 49121 E.U.A.
 FRACCION ARANCELARIA: 4823014
 -ADUANA: LAREDO, TEXAS -PAIS DE ORIGEN: ESTADOS UNIDOS DE AMERICA
 -CONTENIDO ML: 1 P.E.Z.
 -DESCRIPCION: PATRON DE COSTURA
 © 2004 BY SIMPLICITY PATTERN CO. INC. PRINTED IN USA SIMPLICITY IS A REGISTERED TRADEMARK

 **\$15.95**
USA
 price code A code pour prix

4890 SIZE KK 8,10,12,14
EUR. 34-40 FR. 36-42

Simplicity

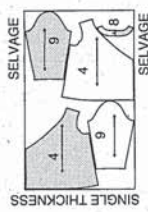


INTERFACING

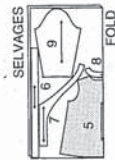
7 8 10 11
5" (65CM TO 64CM) FUSIBLE
WITH NAP



4 5 6 7 8 9



7B 58" 60" (150CM)
WITH NAP
ALL SIZES



F BAG

USE PIECES 12 13
9A 44" 45" OR 58" 60" (115CM OR 150CM)
WITH NAP

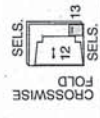
LINING

USE PIECE 12
9B 44" 45" (115CM)
WITHOUT NAP



INTERFACING

USE PIECES 12 13
CUT ONE OF PIECE 13
9C 22" TO 25" (55CM TO 64CM) FUSIBLE



C, D ENTRETRELA

USE LAS PIEZAS 7 8 10 11
6 22" A 25" (55CM A 64CM) ADHESIVA
TODAS LAS TALLAS



E BLUSA USE LAS PIEZAS 4 5 6 7 8 9
7A 44" 45" (115CM) CON PELUSATODAS LAS TALLAS
7B 58" 60" (150CM) CON PELUSATODAS LAS TALLAS

B, E ENTRETRELA USE LAS PIEZAS 7 8
8 22" A 25" (55CM A 64CM) ADHESIVA
TODAS LAS TALLAS

F BOLSO USE LAS PIEZAS 12 13
9A 44" 45" O 58" 60" (115CM O 150CM)
CON PELUSA

FORRO USE LA PIEZA 12
9B 44" 45" (115CM) SIN PELUSA

ENTRETRELA USE LAS PIEZAS 12 13
CORTE UNA PIEZA 13
9C 22" A 25" (55CM A 64CM) ADHESIVA

Sewing Directions

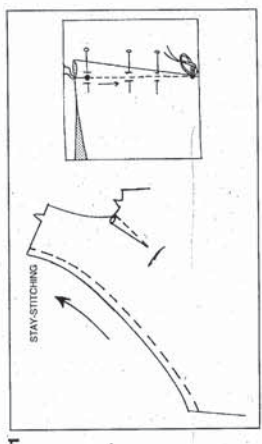
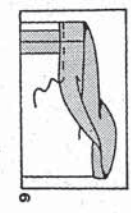
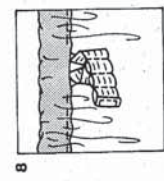
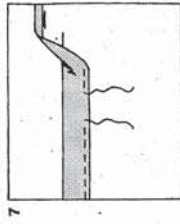
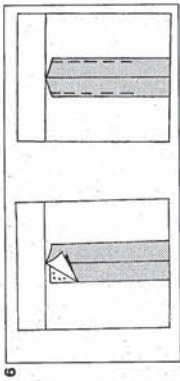


Read **General Directions** on page 1 before you begin.

PANTS

NOTE: If you prefer a cropped length pant, trim away up to 3" (7.5cm) from lower edge of pants.

1. Pin pants front to back at inner leg seams, matching notches. Stitch seam.
2. With **RIGHT** sides together, stitch center (crotch) seam, matching notches and inner leg seams. To reinforce seam, stitch again over first stitching. Trim seam in curved area to 1/4" (6mm). Press remaining seam open.
3. To ease lower edge of front panel between notches, stitch along seam line and 1/4" (6mm) **INSIDE** seam line, using a long machine-stitch.
4. With **RIGHT** sides together, pin front panel to upper edge of pants front, matching centers. Pull up ease-stitches to fit. Stitch. Press seam toward panel.
5. With **RIGHT** sides together stitch front to back at side seams.

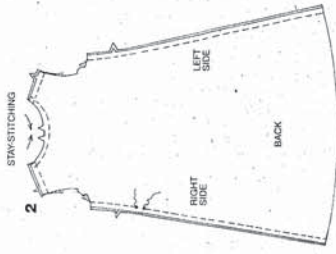


6. To keep elastic from getting stuck in the seam allowances as it's inserted, use fusible web or machine-basting to anchor them to garment within the casing area. Be sure to remove basting after casing is finished.
7. Press 1/2" (3.8cm) on upper edge to **INSIDE**, forming casing. Press under 1/4" (6mm) on raw edge. Stitch close to lower edge of casing, leaving an opening to insert elastic.
8. Cut a piece of elastic to fit waist, plus 5" (12.5cm). Insert elastic through casing. Lap ends of elastic 5/8" (1.5cm). Stitch ends of elastic together securely. Pull elastic out and fold along lapped ends. Make three more rows of stitching 5/8" (1.5cm) apart. (These stitchings may be ripped out when necessary for growth). Slip elastic back into casing. Stitch opening closed. Distribute fullness evenly.
9. Mark length. Press up hem along marking. Mark depth of hem; trim evenly. Press under 1/4" (6mm) on raw edge. Stitch close to inner pressed edge. If you prefer to crease pants, fold leg edges together, matching side and inner leg seams; press.

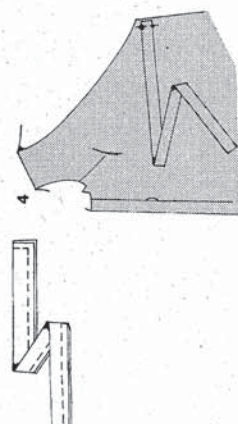
DRESS B, C OR TOP D, E

1. Stay-stitch front neck edge 1/2" (1.3cm) from cut edge in direction of arrows. Stay-stitching stays in permanently and helps prevent stretching on curved edge. Stay-stitching will not be shown in the following illustrations. To make dart in front, with **RIGHT** sides together, fold the fabric through the center of the dart, bringing broken lines and small dots together. On **INSIDE**, place pins at **RIGHT** angles to the broken lines. Stitch the dart from wide end to point. **TIP:** To prevent a "bubble" at the point, make the last few stitches right on the fold and leave the thread ends long enough to tie a knot. **DO NOT** back-stitch at the point. Press the dart flat along the stitching to "blend" the stitches, then press dart up.

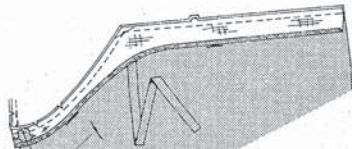
3/4
STAY-STITCHING



2. Stay-stitch back neck edge. Stitch front to back at shoulder seams.
Stitch side seams, leaving RIGHT side seam open between large dots. Back-stitch at large dots to reinforce seam.



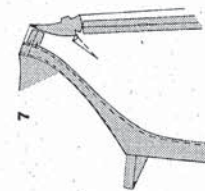
4. Turn tie end RIGHT side out; press.
On OUTSIDE, pin tie end to each front edge, matching small and large dots, having raw edges even. Bastle.



5. Apply fusible interfacing to WRONG side of front and back facing sections, following manufacturer's directions.
Stitch shoulder seams of facing sections.
To EDGE FINISH unnotched edge...stitch 1/4" (6mm) from edge, turn under along stitching and stitch OR zig-zag over the edge OR overlock/serge over the edge.
With RIGHT sides together, pin facing to garment, matching centers back and shoulder seams. Stitch front and neck edges. Trim seam and corners; clip curves.



6. To understitch press facing away from garment; press seam toward facing. Facing side up, stitch close to seam through facing and seam allowances as far as possible.



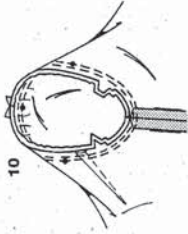
7. Turn facing to INSIDE; press, pressing tie ends out.
To keep the facing from rolling to OUTSIDE, secure it at the seam allowances by tacking it by hand, stitching in the ditch or using a small piece of fusible web.



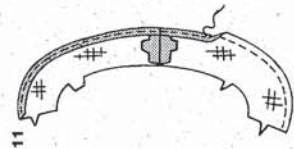
SLEEVES B, E

8. To ease top of sleeve between notches, stitch along seam line and 1/4" (6mm) INSIDE seam line, using a long machine-stitch. Stitch underarm seam. Press up hem.
Press under 1/4" (6mm) on raw edge.
Stitch close to inner pressed edge.

9. FOR OPTIONAL TRIM - Pin lower edge of trim to lower edge of sleeve, turning under ends so that they meet at underarm seam. Stitch close to both edges of trim.



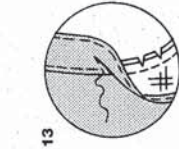
10. Turn sleeve RIGHT side out.
Hold garment WRONG side out with armhole toward you.
With RIGHT sides together, pin sleeve to armhole edge with center small dot at shoulder seam, matching underarm seams and remaining small dots. Pull up ease stitches to fit.
To distribute fullness evenly, slide fabric along bobbin threads until there are no puckers or tucks on the seam line. Bastle.
Stitch. Stitch again 1/8" (3mm) from first stitching. Trim seam allowance, shrinking out fullness.



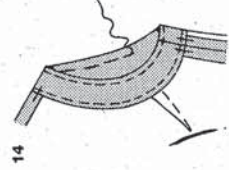
11. Apply fusible interfacing to WRONG side of front and back armhole facings, following manufacturer's directions.
Stitch shoulder seam of armhole facing sections, matching double notches. To EDGE FINISH unnotched edge...stitch 1/4" (6mm) from edge, turn under along stitching and stitch OR zig-zag over the edge OR overlock/serge over the edge.



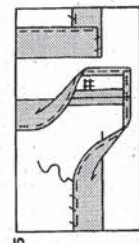
12. Stitch underarm seam. With RIGHT sides together, stitch facing to armhole edge, matching shoulder and underarm seams. Trim seam; clip curves.



13. To understitch press facing away from garment; press seam toward facing. Facing side up, stitch close to seam through facing and seam allowances.

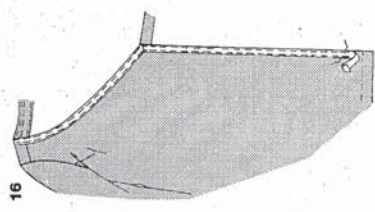


14. Turn facing to INSIDE; press.
To keep the facing from rolling to OUTSIDE, secure it at the seam allowances by tacking it by hand, stitching in the ditch or using a small piece of fusible web.
On OUTSIDE, top-stitch 1/4" (6mm) from finished armhole edge.

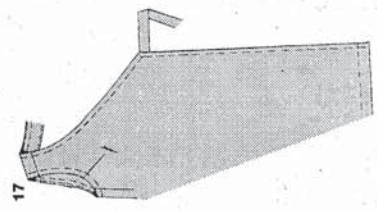


15. Mark length. Open out front facings.
Press up hem along marking.
Mark depth of hem; trim evenly.
To EDGE FINISH the raw edge...stitch under 1/4" (6mm), zig-zag, OR overlock/serge. Slip-stitch, easing in fullness.
Press facings to INSIDE; slip-stitch to hem.

CONTINUE AS FOLLOWS FOR ALL GARMENTS



16. FOR OPTIONAL TRIM B AND E - Pin ribbon or braid to garment front and neck edge, turning under ends of trim at lower edge and folding out fullness at corners, as shown.
Stitch close to both long edges of trim.



17. FOR GARMENTS WITHOUT TRIM - On OUTSIDE, top-stitch 1/4" (6mm) from front and neck edge.

FOR ALL GARMENTS - Insert LEFT tie end through opening in RIGHT side seam. Tie tie ends at center back or side edge, as shown on front of envelope.

Explore Litigation Insights

Docket Alarm provides insights to develop a more informed litigation strategy and the peace of mind of knowing you're on top of things.

Real-Time Litigation Alerts



Keep your litigation team up-to-date with **real-time alerts** and advanced team management tools built for the enterprise, all while greatly reducing PACER spend.

Our comprehensive service means we can handle Federal, State, and Administrative courts across the country.

Advanced Docket Research



With over 230 million records, Docket Alarm's cloud-native docket research platform finds what other services can't. Coverage includes Federal, State, plus PTAB, TTAB, ITC and NLRB decisions, all in one place.

Identify arguments that have been successful in the past with full text, pinpoint searching. Link to case law cited within any court document via Fastcase.

Analytics At Your Fingertips



Learn what happened the last time a particular judge, opposing counsel or company faced cases similar to yours.

Advanced out-of-the-box PTAB and TTAB analytics are always at your fingertips.

API

Docket Alarm offers a powerful API (application programming interface) to developers that want to integrate case filings into their apps.

LAW FIRMS

Build custom dashboards for your attorneys and clients with live data direct from the court.

Automate many repetitive legal tasks like conflict checks, document management, and marketing.

FINANCIAL INSTITUTIONS

Litigation and bankruptcy checks for companies and debtors.

E-DISCOVERY AND LEGAL VENDORS

Sync your system to PACER to automate legal marketing.