



US005544352A

United States Patent [19]
Egger

[11] Patent Number: 5,544,352
[45] Date of Patent: Aug. 6, 1996

[54] METHOD AND APPARATUS FOR INDEXING, SEARCHING AND DISPLAYING DATA

[75] Inventor: Daniel Egger, Washington, D.C.

[73] Assignee: Libertech, Inc., Durham, N.C.

[21] Appl. No.: 76,658

[22] Filed: Jun. 14, 1993

[51] Int. Cl.⁶ G06F 17/30

[52] U.S. Cl. 395/600; 364/419.19; 364/DIG. 1; 364/282.1; 364/283.3

[58] Field of Search 395/600; 364/419.19, 364/419.13

[56] References Cited

U.S. PATENT DOCUMENTS

4,839,853	6/1989	Deerwester et al.	395/600
4,945,476	7/1990	Bodick et al.	364/413.02
5,122,951	6/1992	Kamiya	364/419.13
5,157,783	10/1992	Anderson et al.	395/600
5,206,949	4/1993	Cochran et al.	395/600
5,241,671	8/1993	Reed et al.	395/600
5,243,655	9/1993	Wang	380/51
5,301,109	4/1994	Landauer et al.	364/419.19
5,325,298	6/1994	Gallant	364/419.19
5,418,948	5/1995	Turtle	395/600

OTHER PUBLICATIONS

Agosti, et al., "A Two-Level Hypertext Retrieval Model for Legal Data," SIGIR '91 (1991).

Fowler, et al., "Integrating Query, Thesaurus and Documents Through a Commn Visual Representation," SIGIR '91 (1991).

Rose & Belew, "Legal Information Retrieval: a Hybrid Approach," ICAIL '89 (1989).

Belew, Richard, "A Connectionist Approach to Conceptual Information Retrieval," ICAIL '87 (1987).

Gelbart & Smith, "Beyond Boolean Search: FLEXICON, A Legal Text-Based Intelligent System," ICAIL '91 (1991).

Lin, "A Self-Organizing Semantic Map for Information Retrieval," SIGIR '91 (1991).

Turtle & Croft, "Inference Networks for Document Retrieval," SIGR '90 (1990).

Primary Examiner—Thomas G. Black

Assistant Examiner—Wayne Amsbury

Attorney, Agent, or Firm—Dorsey & Whitney PLLP

[57] ABSTRACT

A computer research tool for indexing, searching and displaying data is disclosed. Specifically, a computer research tool for performing computerized research of data including textual objects in a database and for providing a user interface that significantly enhances data presentation is described. Textual objects and other data in a database are indexed by creating a numerical representation of the data. The indexing technique called proximity indexing generates a quick-reference of the relations, patterns and similarity found among the data in the database. Proximity indexing indexes the data by using statistical techniques and empirically developed algorithms. Using this proximity index, an efficient search for pools of data having a particular relation, pattern or characteristic can be effectuated. The Computer Search program, called the Computer Search Program for Data represented in Matrices (CSPDM), provides efficient computer search methods. The CSPDM rank orders data in accordance with the data's relationship to time, a paradigm datum, or any similar reference. The user interface program, called the Graphical User Interface (GUI), provides a user friendly method of interacting with the CSPDM program and prepares and presents a visual graphical display. The graphical display provides the user with a two dimensional spatial orientation of the data.

52 Claims, 24 Drawing Sheets

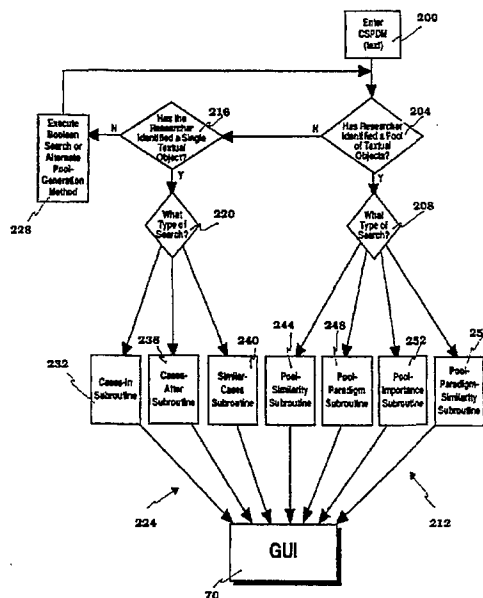


EXHIBIT 2006
Facebook, Inc. et al.

v.

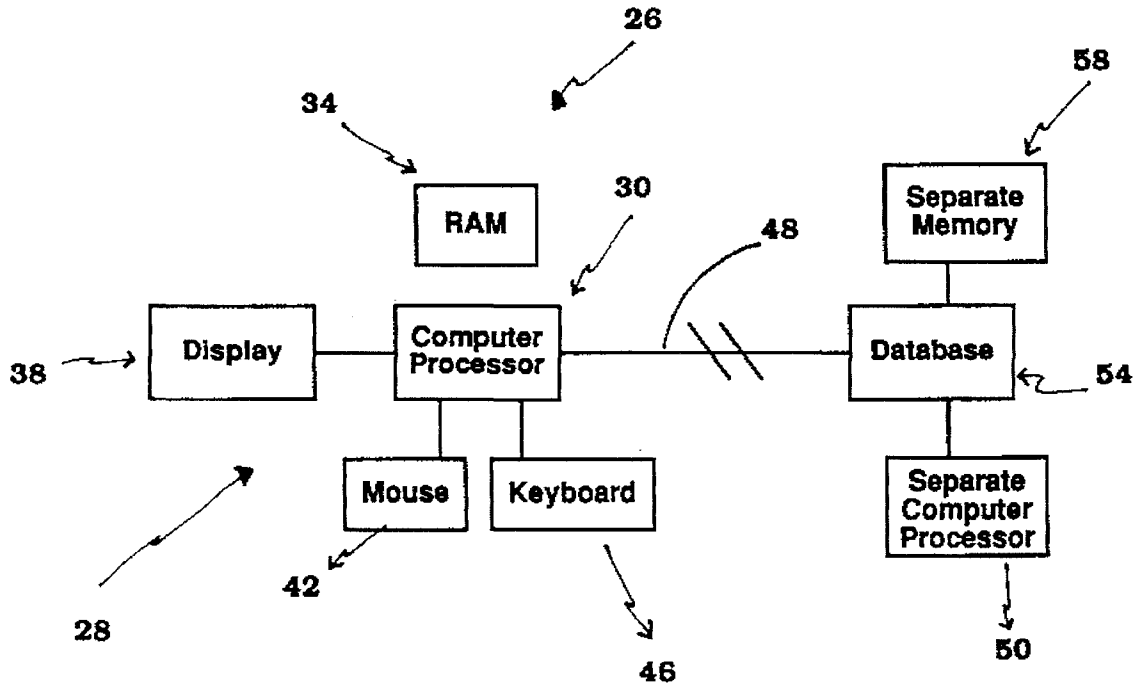


FIG. 1

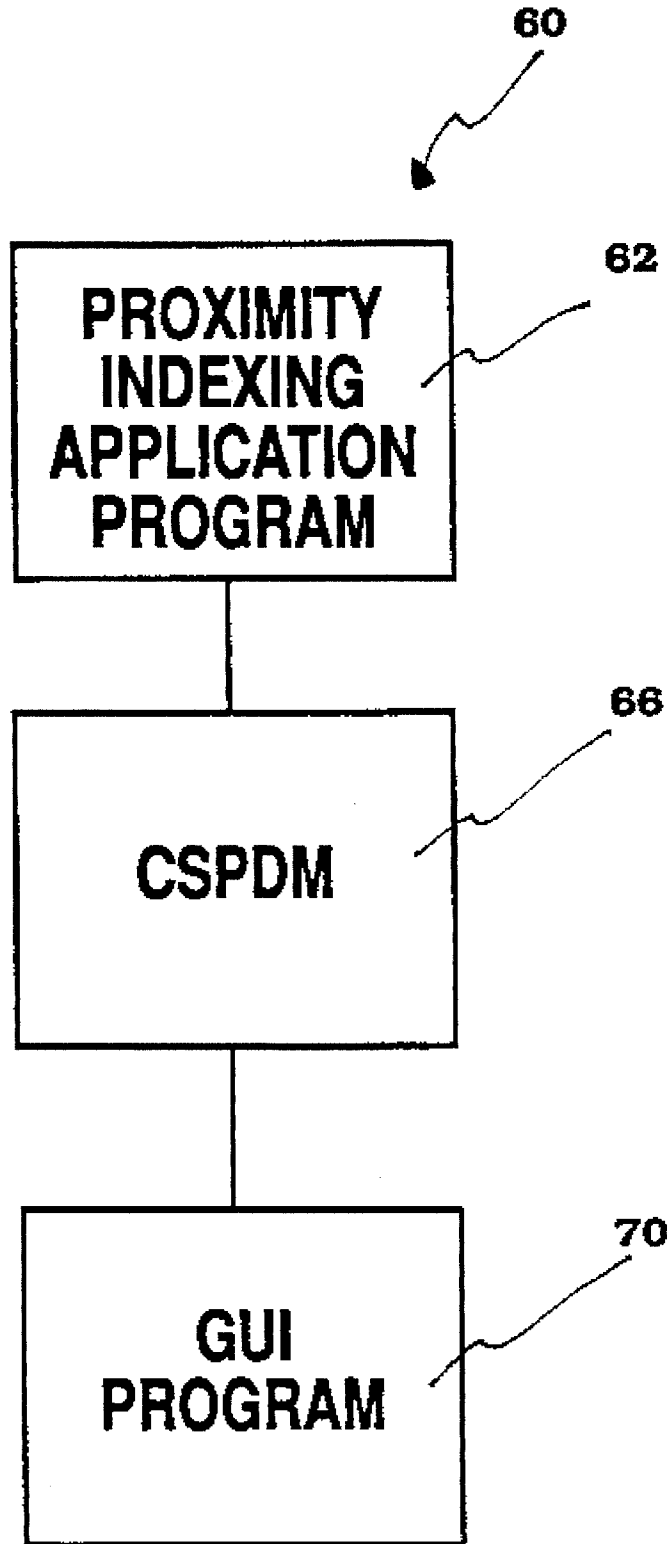


FIG. 2

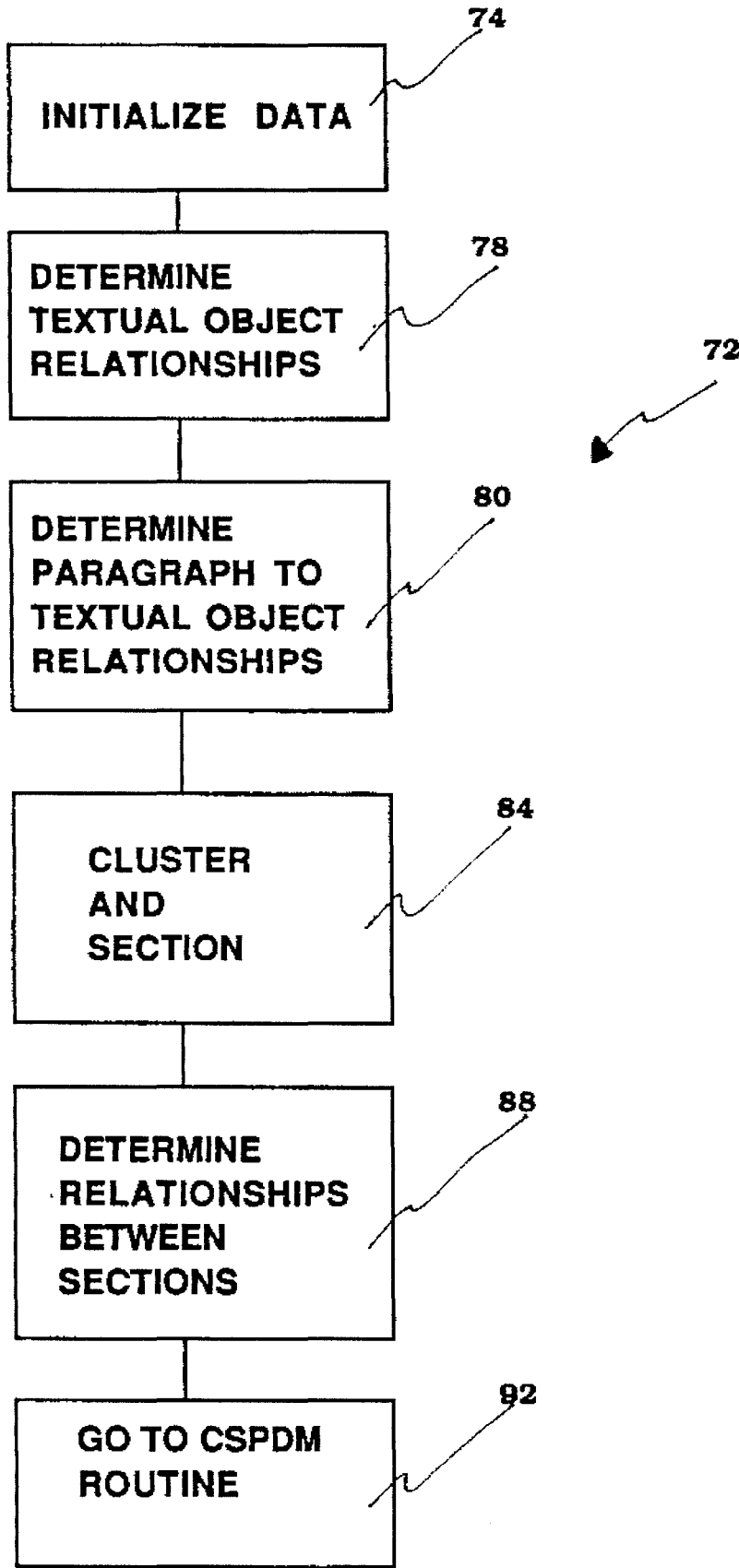


FIG. 3A

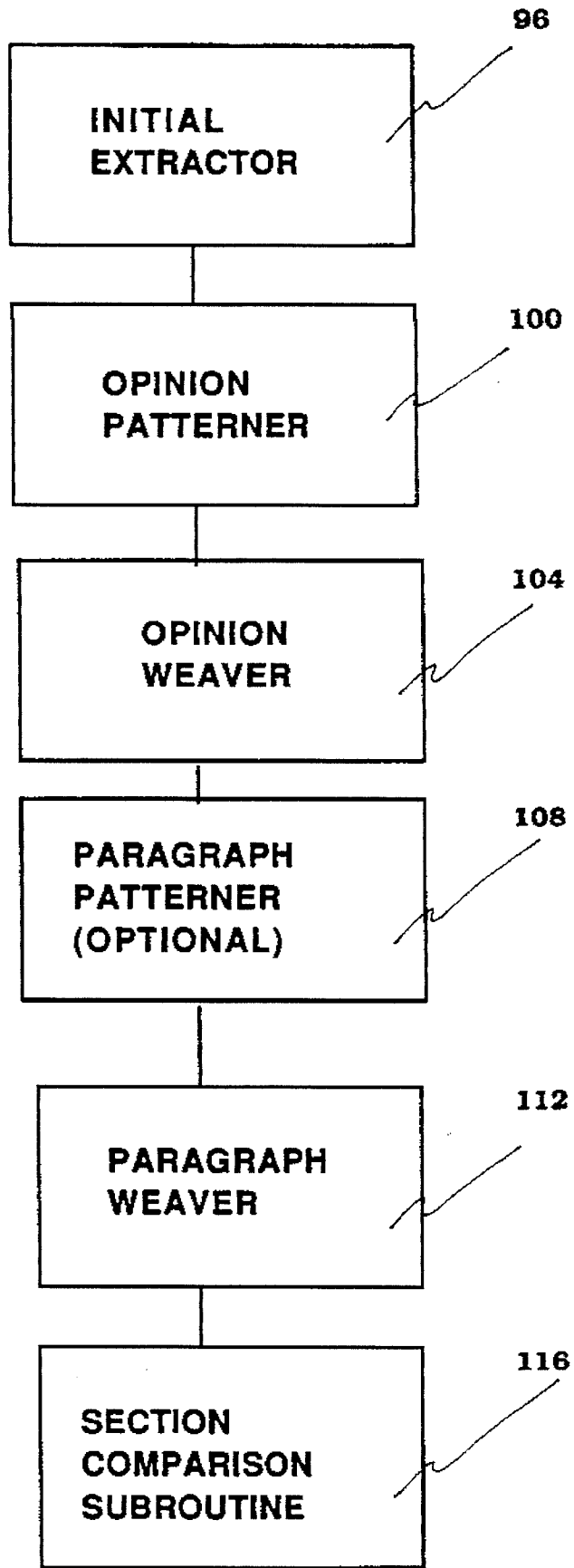


FIG. 3B

Explore Litigation Insights

Docket Alarm provides insights to develop a more informed litigation strategy and the peace of mind of knowing you're on top of things.

Real-Time Litigation Alerts



Keep your litigation team up-to-date with **real-time alerts** and advanced team management tools built for the enterprise, all while greatly reducing PACER spend.

Our comprehensive service means we can handle Federal, State, and Administrative courts across the country.

Advanced Docket Research



With over 230 million records, Docket Alarm's cloud-native docket research platform finds what other services can't. Coverage includes Federal, State, plus PTAB, TTAB, ITC and NLRB decisions, all in one place.

Identify arguments that have been successful in the past with full text, pinpoint searching. Link to case law cited within any court document via Fastcase.

Analytics At Your Fingertips



Learn what happened the last time a particular judge, opposing counsel or company faced cases similar to yours.

Advanced out-of-the-box PTAB and TTAB analytics are always at your fingertips.

API

Docket Alarm offers a powerful API (application programming interface) to developers that want to integrate case filings into their apps.

LAW FIRMS

Build custom dashboards for your attorneys and clients with live data direct from the court.

Automate many repetitive legal tasks like conflict checks, document management, and marketing.

FINANCIAL INSTITUTIONS

Litigation and bankruptcy checks for companies and debtors.

E-DISCOVERY AND LEGAL VENDORS

Sync your system to PACER to automate legal marketing.