



# United States Patent [19]

[11] Patent Number: **5,634,091**

Sands et al.

[45] Date of Patent: **May 27, 1997**

## [54] DIGITAL PAGE IMAGING SYSTEM

4,928,252 5/1990 Gabbe et al. .... 395/112  
5,021,975 6/1991 Yamanashi ..... 395/115

[75] Inventors: **Gerald K. Sands**, Crawfordsville, Ind.; **Ilario J. Alvino**, Naperville, Ill.; **Dennis M. Beach**, Crawfordsville, Ind.; **Steve L. Coffman**, Aurora; **Charles A. Cornelius**, Wheaton, both of Ill.; **Glenn E. Dieckmann**, Crawfordsville, Ind.; **Linda M. Krause**, Elmhurst, Ill.; **Albert C. W. Loo**, Chicago, Ill.; **J. Thomas Shively**, Hinsdale, Ill.; **James L. Warmus**, LaGrange, Ill.; **Mary O. Bukowski**, Elmhurst, Ill.

### OTHER PUBLICATIONS

“Poststrip” manual, Copyright 1989, Ultimate Technographics, Inc.

“Press Imposition for IBM 4250/General Information”, R. R. Donnelley & Sons Company, Feb. 21, 1989.

*Primary Examiner*—Arthur G. Evans

*Attorney, Agent, or Firm*—Wood, Phillips, VanSanten, Clark & Mortimer

[73] Assignee: **R. R. Donnelley & Sons Company**, Lisle, Ill.

### [57] ABSTRACT

[21] Appl. No.: **738,217**

A digital page imaging (DPI) system receives customer transmitted technical document files produced on a desktop publishing package and ensures that the documents are produced properly. The system provides an easy to use interface, reduces turnaround time in processing customer work, and eliminates errors associated with manual imposition processes. The DPI system consists of a work station, modem and related telecommunication link, a photo typesetter and a software package for automatically imposing flats for printing on the typesetter.

[22] Filed: **Jul. 30, 1991**

[51] Int. Cl.<sup>6</sup> ..... **G06K 15/00**

[52] U.S. Cl. .... **395/117; 101/453**

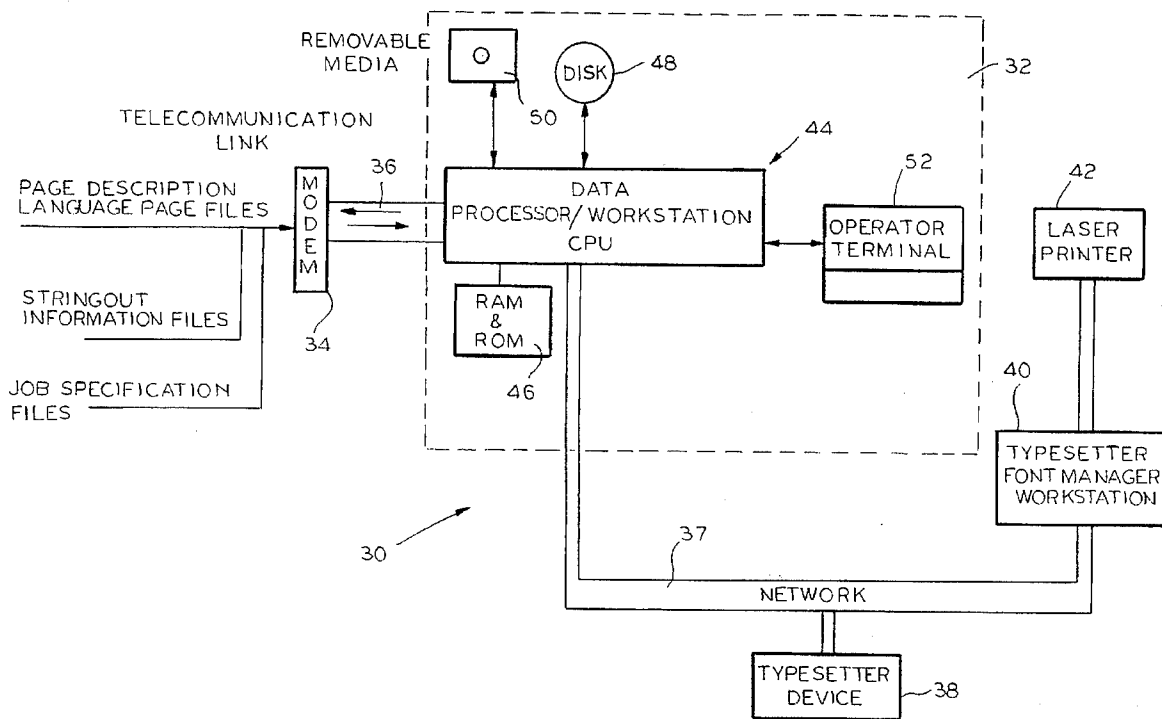
[58] Field of Search ..... 395/115, 116, 395/117, 101, 145-149, 162-164; 101/453, 463.1, 464, 465-467, 450.1

### [56] References Cited

#### U.S. PATENT DOCUMENTS

4,718,784 1/1988 Drisko ..... 395/117

**30 Claims, 38 Drawing Sheets**



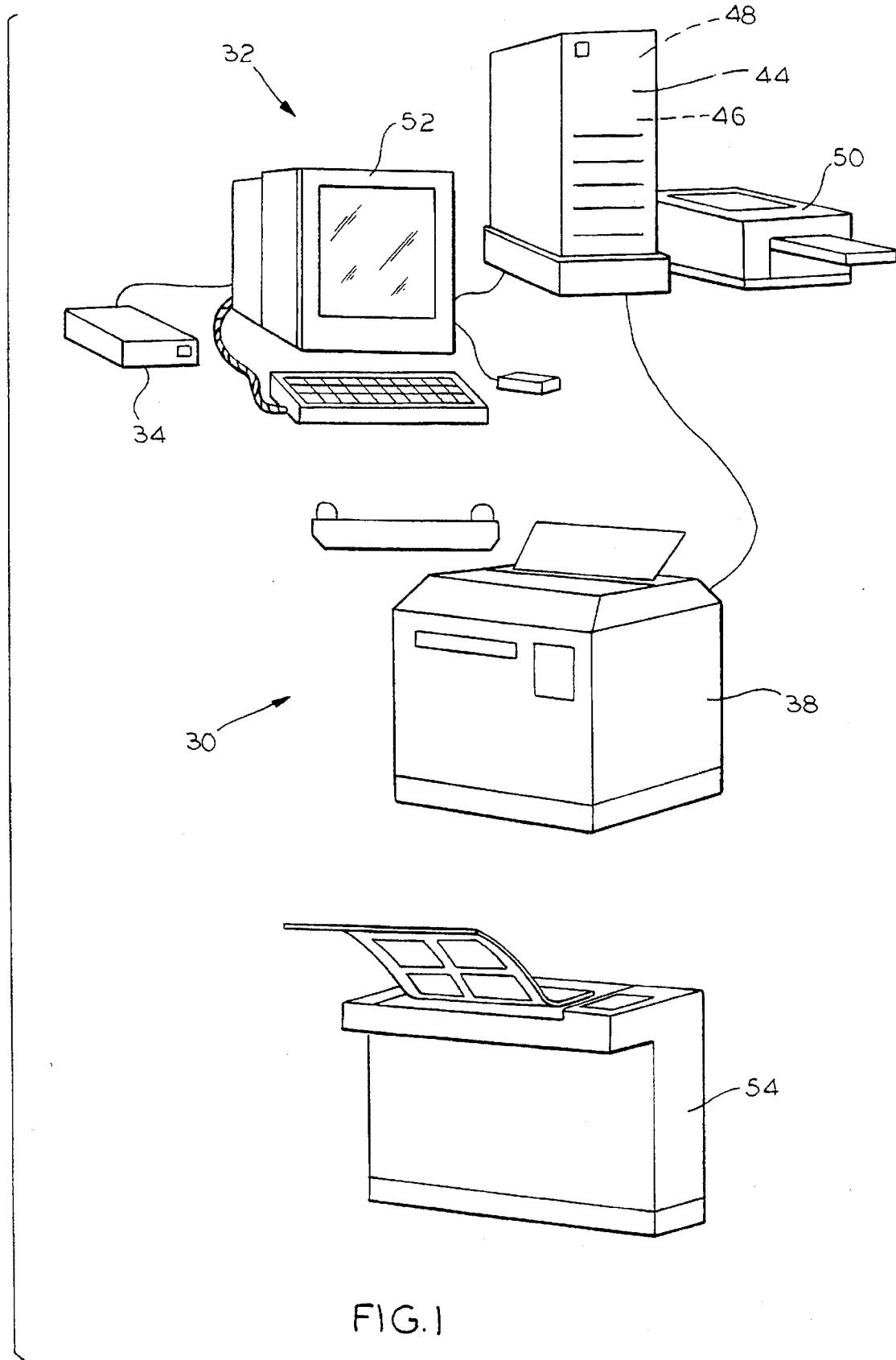


FIG. 1

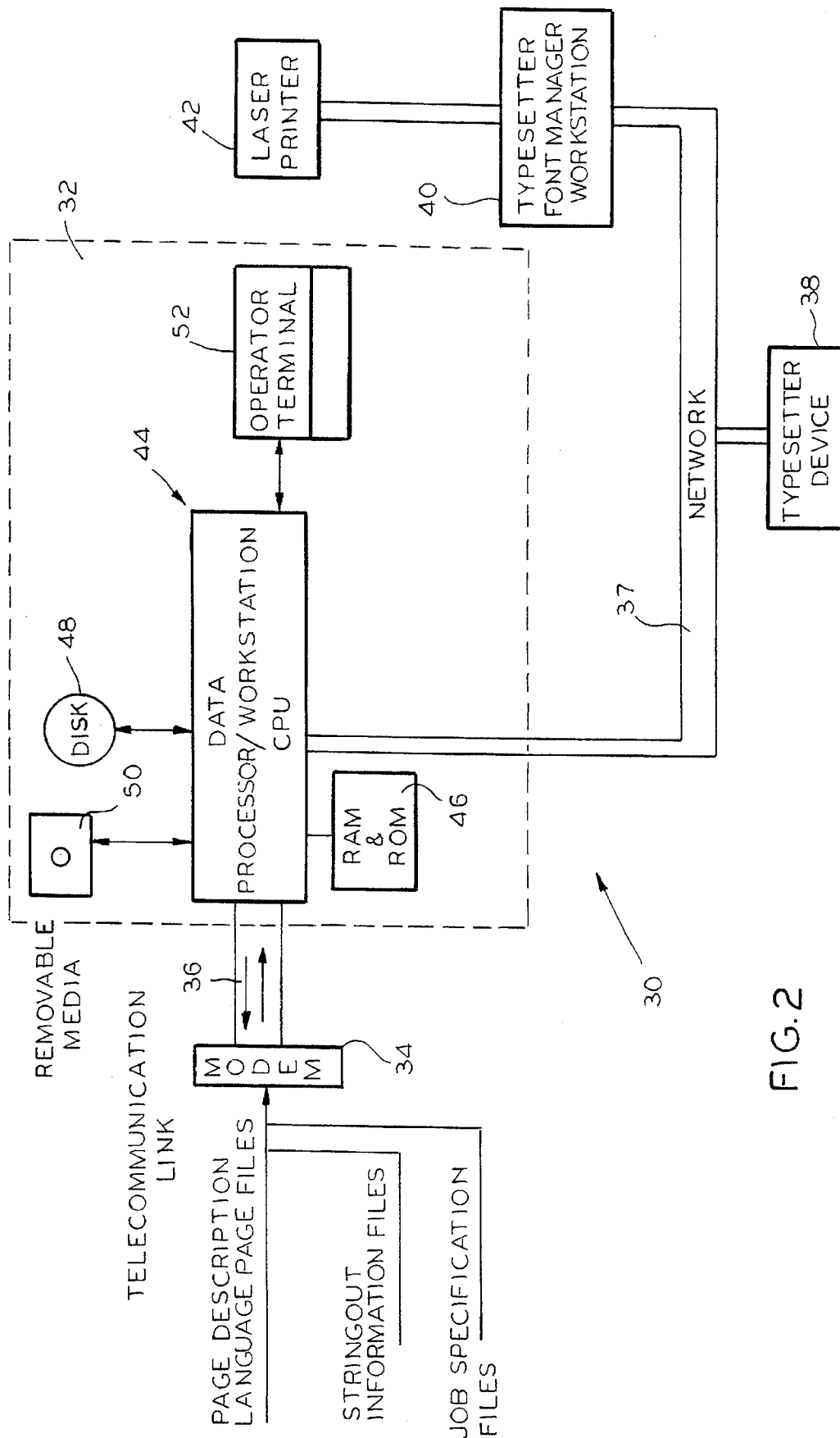


FIG. 2

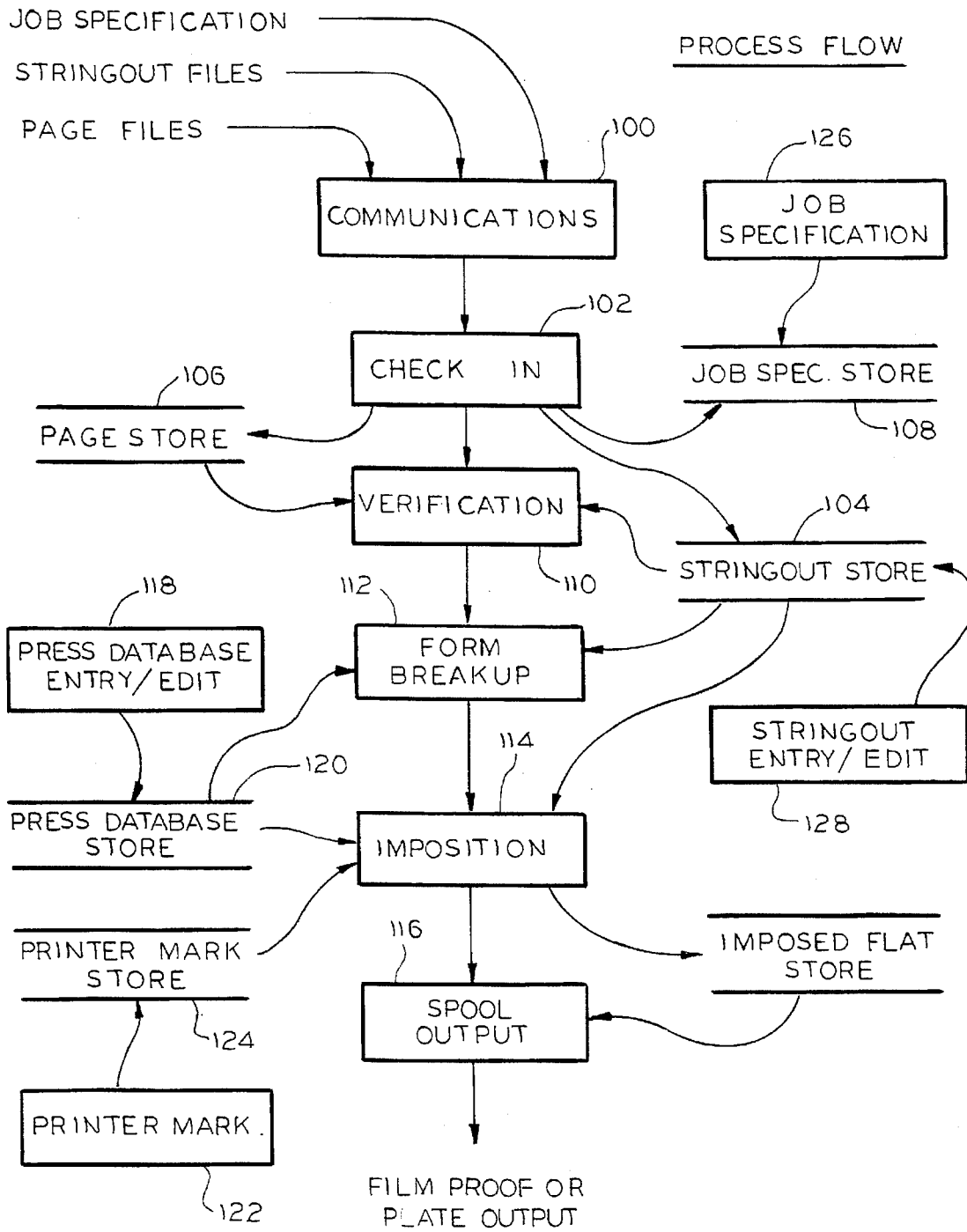


FIG.3

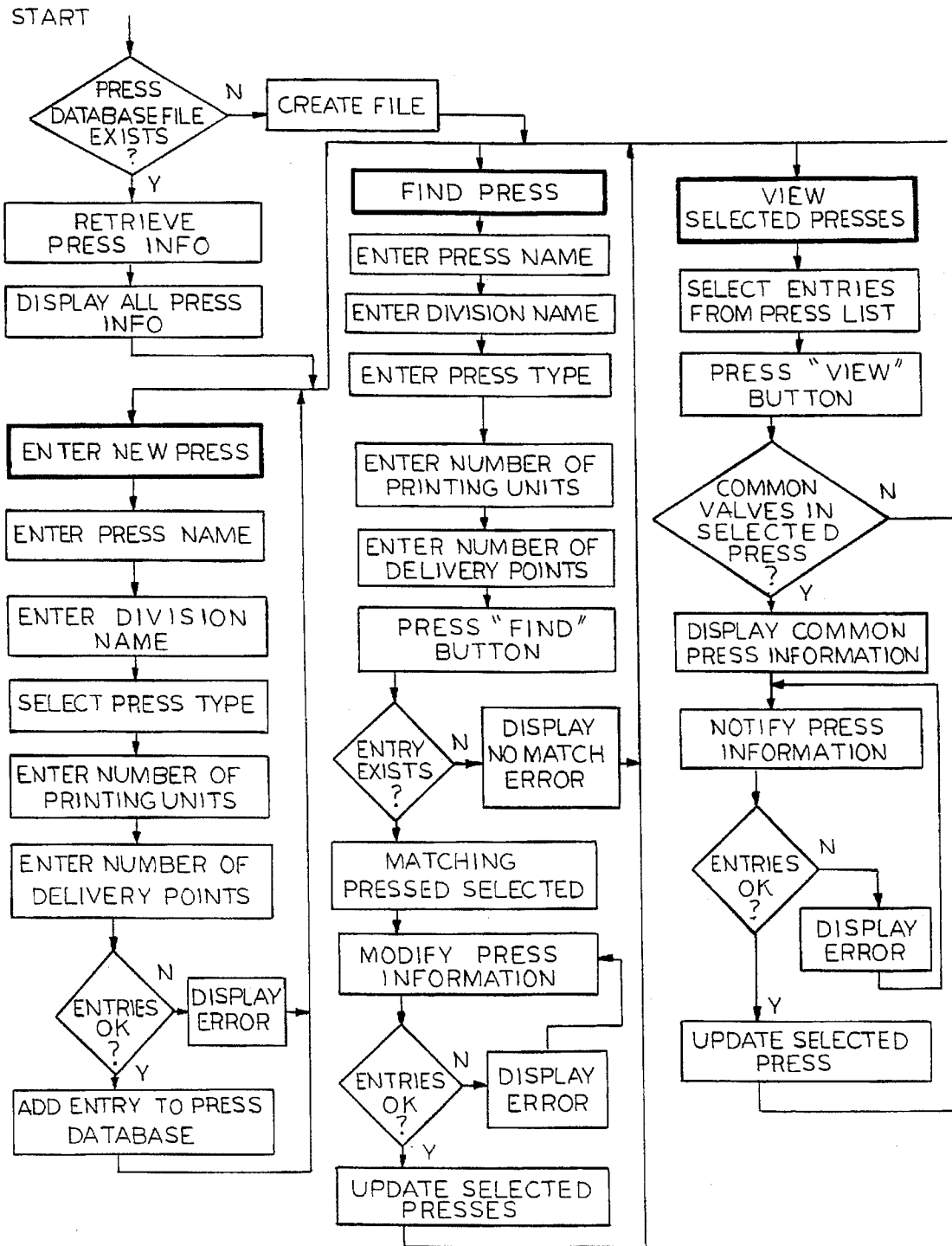


FIG. 4A-1

# Explore Litigation Insights

Docket Alarm provides insights to develop a more informed litigation strategy and the peace of mind of knowing you're on top of things.

## Real-Time Litigation Alerts



Keep your litigation team up-to-date with **real-time alerts** and advanced team management tools built for the enterprise, all while greatly reducing PACER spend.

Our comprehensive service means we can handle Federal, State, and Administrative courts across the country.

## Advanced Docket Research



With over 230 million records, Docket Alarm's cloud-native docket research platform finds what other services can't. Coverage includes Federal, State, plus PTAB, TTAB, ITC and NLRB decisions, all in one place.

Identify arguments that have been successful in the past with full text, pinpoint searching. Link to case law cited within any court document via Fastcase.

## Analytics At Your Fingertips



Learn what happened the last time a particular judge, opposing counsel or company faced cases similar to yours.

Advanced out-of-the-box PTAB and TTAB analytics are always at your fingertips.

## API

Docket Alarm offers a powerful API (application programming interface) to developers that want to integrate case filings into their apps.

## LAW FIRMS

Build custom dashboards for your attorneys and clients with live data direct from the court.

Automate many repetitive legal tasks like conflict checks, document management, and marketing.

## FINANCIAL INSTITUTIONS

Litigation and bankruptcy checks for companies and debtors.

## E-DISCOVERY AND LEGAL VENDORS

Sync your system to PACER to automate legal marketing.