



US007242487B2

(12) **United States Patent**
Lucivero et al.

(10) **Patent No.:** **US 7,242,487 B2**
(45) **Date of Patent:** ***Jul. 10, 2007**

(54) **PRINT DRIVER SYSTEM HAVING A USER INTERFACE AND A METHOD FOR PROCESSING RASTER DATA**

(75) Inventors: **Jeanne M. Lucivero**, Burlington, MA (US); **David D. Smith**, Londonderry, NH (US); **Frank P. White**, Woburn, MA (US); **Robert G. Boyle**, Methuen, MA (US)

(73) Assignee: **Agfa Corporation**, Wilmington, MA (US)

(*) Notice: This patent issued on a continued prosecution application filed under 37 CFR 1.53(d), and is subject to the twenty year patent term provisions of 35 U.S.C. 154(a)(2).

Subject to any disclaimer, the term of this patent is extended or adjusted under 35 U.S.C. 154(b) by 1300 days.

(21) Appl. No.: **08/869,244**

(22) Filed: **Jun. 4, 1997**

(65) **Prior Publication Data**

US 2002/0063877 A1 May 30, 2002

(51) **Int. Cl.**
G06F 13/00 (2006.01)
G06F 3/12 (2006.01)
G06K 15/02 (2006.01)

(52) **U.S. Cl.** **358/1.13; 358/1.15; 358/1.9**

(58) **Field of Classification Search** 395/101, 395/102, 103, 114, 115, 116, 117; 358/1.15, 358/1.16, 1.17, 1.3, 1.4, 1.9, 1.13
See application file for complete search history.

(56) **References Cited**

U.S. PATENT DOCUMENTS

5,559,933	A	*	9/1996	Boswell	395/114
5,577,172	A	*	11/1996	Vatland et al.	395/114
5,604,843	A	*	2/1997	Shaw et al.	395/101
5,615,314	A	*	3/1997	Schoenzeit	395/114
5,619,624	A	*	4/1997	Schoenzeit et al.	395/118
5,638,521	A	*	6/1997	Buchala et al.	395/311

FOREIGN PATENT DOCUMENTS

EP	0767578	4/1997
EP	0843284	5/1998
JP	09102846	4/1997

* cited by examiner

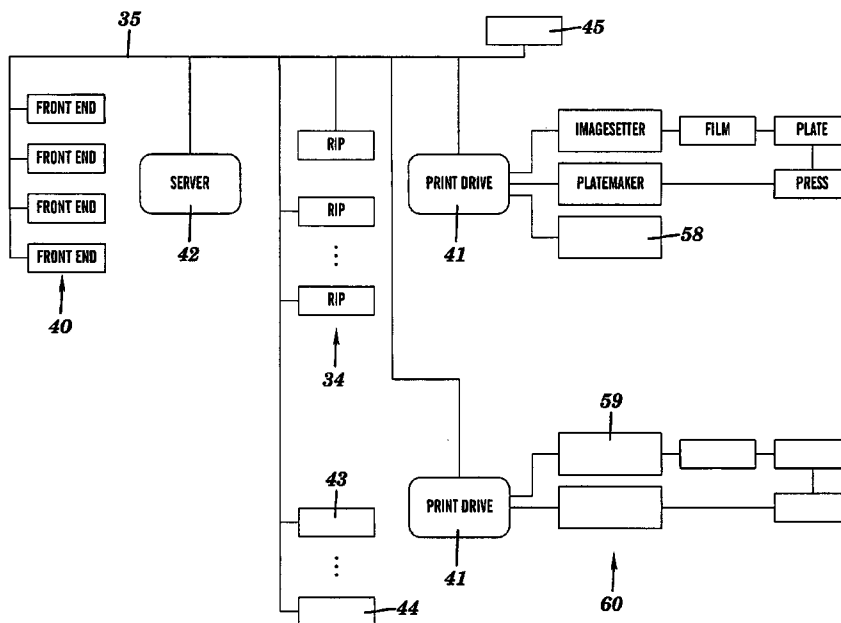
Primary Examiner—Douglas Q. Tran

(74) *Attorney, Agent, or Firm*—Robert A. Sabourin; John A. Merecki

(57) **ABSTRACT**

A system and method for processing raster data including at least one input computer terminal for creating postscript data, at least one raster image processor (RIP), for processing the postscript data into raster data, and a PrintDrive system for managing and controlling the workflow of image files containing raster image data to a plurality of user selectable output devices.

24 Claims, 59 Drawing Sheets



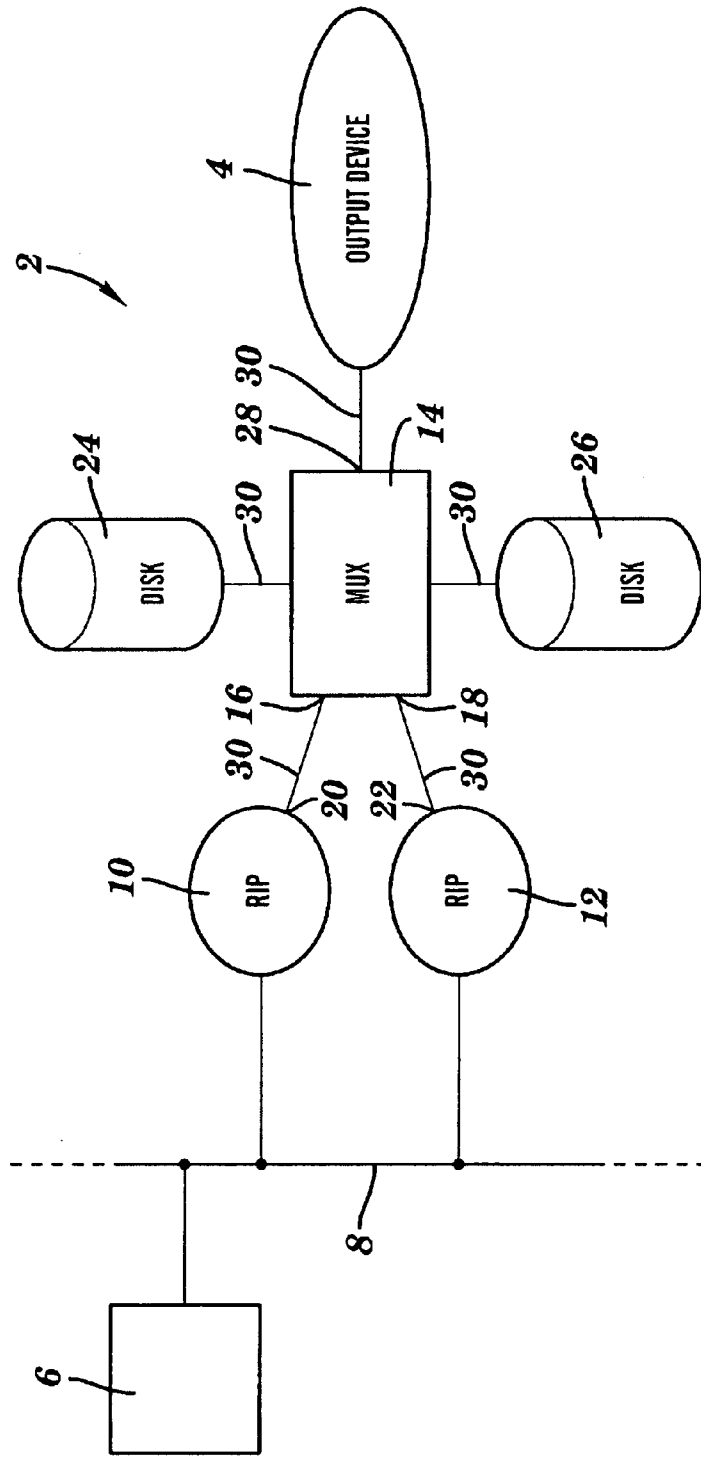


FIG. 1
PRIOR ART

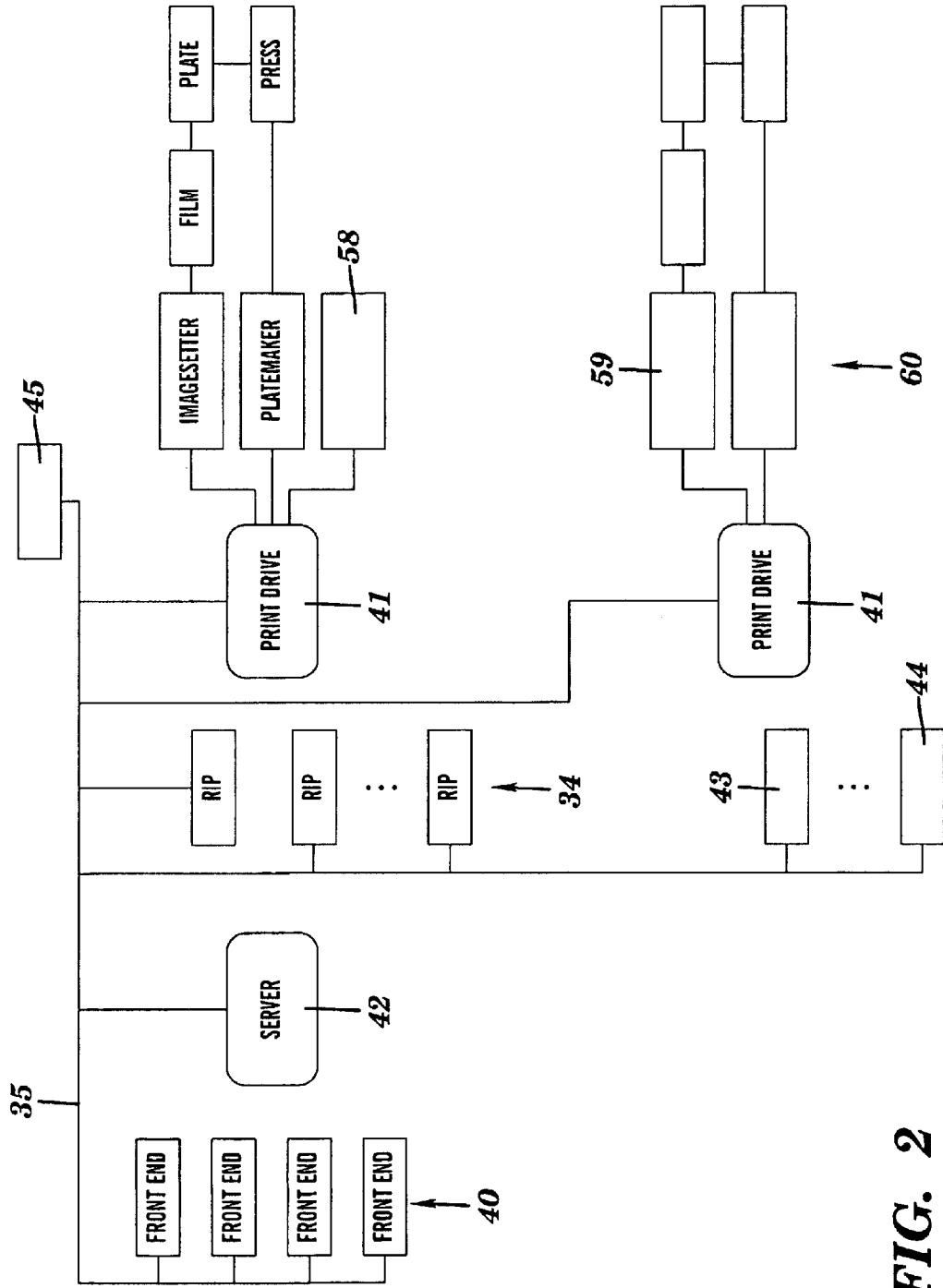


FIG. 2

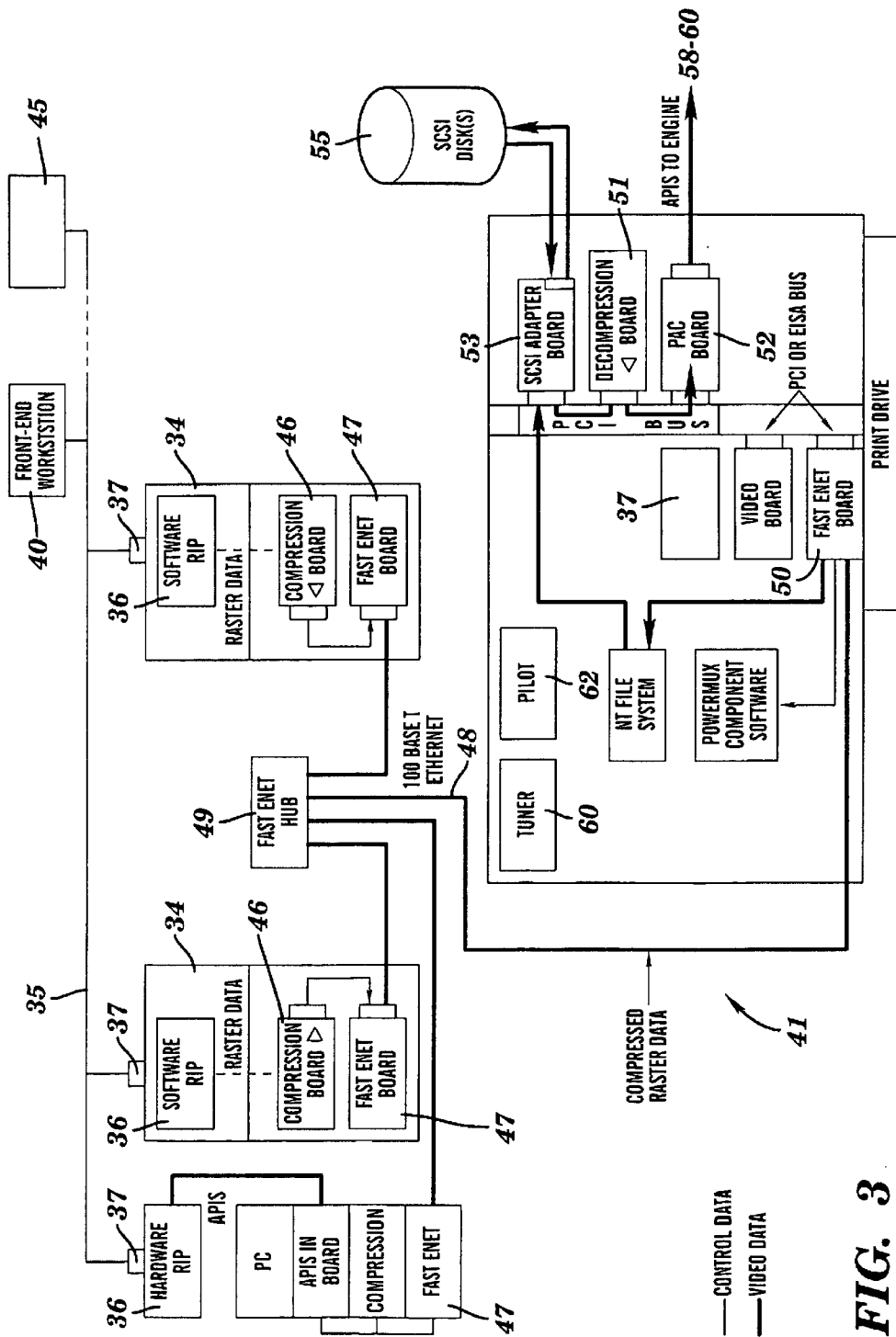


FIG. 3

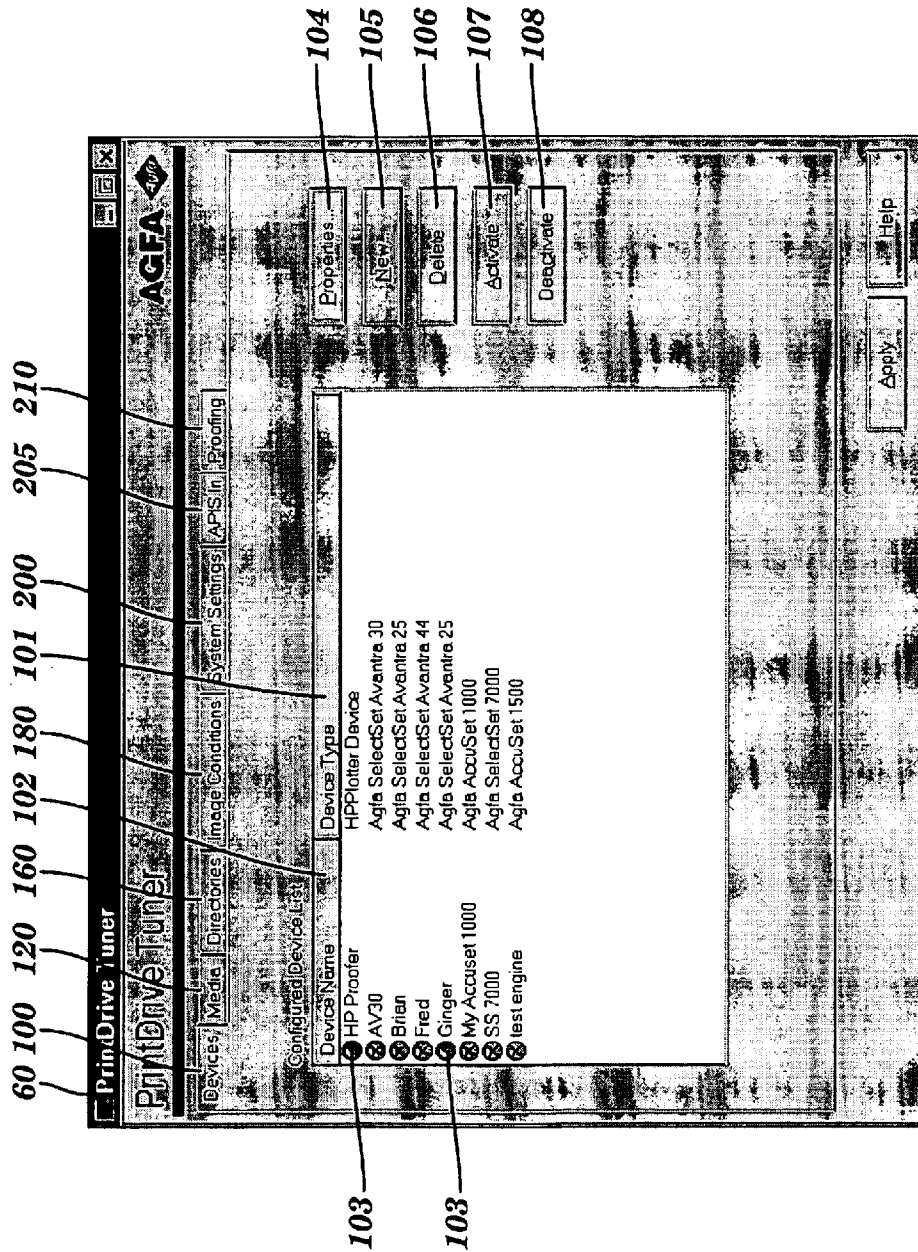


FIG. 4

Explore Litigation Insights

Docket Alarm provides insights to develop a more informed litigation strategy and the peace of mind of knowing you're on top of things.

Real-Time Litigation Alerts



Keep your litigation team up-to-date with **real-time alerts** and advanced team management tools built for the enterprise, all while greatly reducing PACER spend.

Our comprehensive service means we can handle Federal, State, and Administrative courts across the country.

Advanced Docket Research



With over 230 million records, Docket Alarm's cloud-native docket research platform finds what other services can't. Coverage includes Federal, State, plus PTAB, TTAB, ITC and NLRB decisions, all in one place.

Identify arguments that have been successful in the past with full text, pinpoint searching. Link to case law cited within any court document via Fastcase.

Analytics At Your Fingertips



Learn what happened the last time a particular judge, opposing counsel or company faced cases similar to yours.

Advanced out-of-the-box PTAB and TTAB analytics are always at your fingertips.

API

Docket Alarm offers a powerful API (application programming interface) to developers that want to integrate case filings into their apps.

LAW FIRMS

Build custom dashboards for your attorneys and clients with live data direct from the court.

Automate many repetitive legal tasks like conflict checks, document management, and marketing.

FINANCIAL INSTITUTIONS

Litigation and bankruptcy checks for companies and debtors.

E-DISCOVERY AND LEGAL VENDORS

Sync your system to PACER to automate legal marketing.