

PNY Technologies, Inc.

EXHIBIT 1003

PNY Exhibit 1003
Inter Partes Review of



US007352601B1

(12) **United States Patent**
Minneman et al.

(10) **Patent No.:** **US 7,352,601 B1**
(45) **Date of Patent:** **Apr. 1, 2008**

(54) **USB FLASH MEMORY DEVICE**

6,148,354 A 11/2000 Ban et al.

(76) Inventors: **Michael Paul Minneman**, 1275 W. 13th St., Broomfield, CO (US) 80020;
Michael Crawford, 5670 W. 115th Ct., Westminster, CO (US) 80020

(Continued)

OTHER PUBLICATIONS

Toshiba Preliminary SD-Mxxx Series, SD - Mxxx Series, SD Memory Card, Jul. 25, 2002, pp. 1-13, (description and features).

(*) Notice: Subject to any disclaimer, the term of this patent is extended or adjusted under 35 U.S.C. 154(b) by 169 days.

(Continued)

Primary Examiner—J. H. Hur

(74) *Attorney, Agent, or Firm*—Renner, Otto, Boisselle & Sklar, LLP

(21) Appl. No.: **10/997,515**

(22) Filed: **Nov. 24, 2004**

(57) **ABSTRACT**

Related U.S. Application Data

(60) Provisional application No. 60/525,046, filed on Nov. 24, 2003.

(51) **Int. Cl.**

H01R 13/66 (2006.01)
H01R 24/00 (2006.01)
H01R 33/00 (2006.01)

(52) **U.S. Cl.** **365/51**; 439/620.01; 439/660; 439/638; 365/185.05; 365/63

(58) **Field of Classification Search** 365/51, 365/63, 185.05; 710/305, 311; 439/660, 439/638, 518, 620.01

See application file for complete search history.

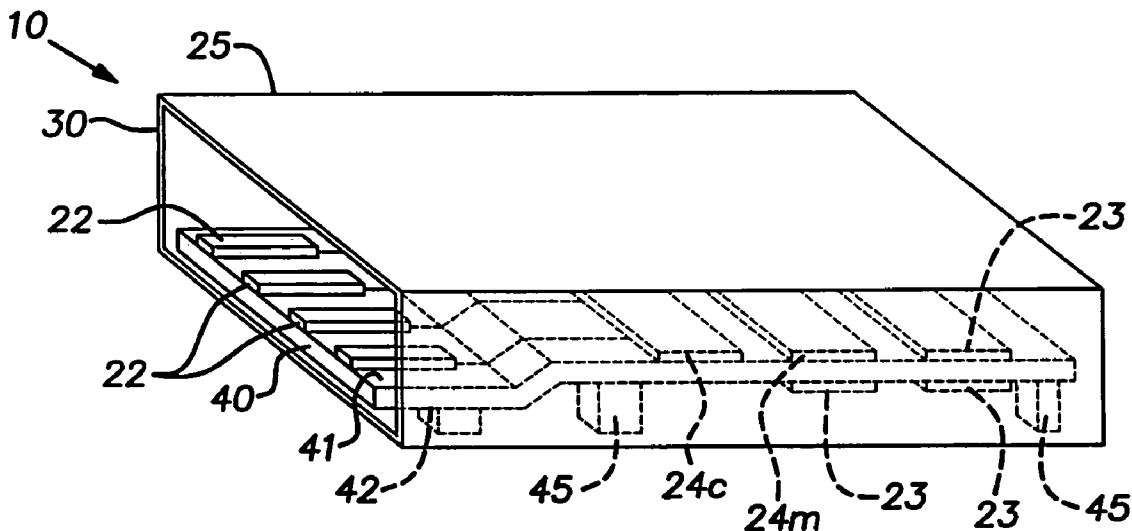
A memory device for interconnection with a Universal Serial Bus (USB) Series A type receptacle of an electronic device includes a housing wherein the housing is largely rectangular, with the width and height of a USB Series A plug standard housing; a connector within the housing, electrical terminals in the housing; the housing and terminals of a form to connect with a USB Series A receptacle of an electronic device; and a data memory and a controller within the housing. The memory device may be used in combination with a portable computing device or peripheral or with a cell phone, gps or other electrical or electronic device that includes a receptacle to house the memory device of the type disclosed herein, wherein the memory device is largely within the electrical or electronic device. A method of transporting data between a peripheral and a computer (or processor) includes storing data in a portable memory device directly using a computer or a peripheral; transporting the portable memory device to the other of such a computer or a peripheral; and delivering data from the portable memory device directly to such other computer or peripheral, said delivering being while the portable memory device is largely within the peripheral during use of the peripheral.

(56) **References Cited**

U.S. PATENT DOCUMENTS

4,323,979	A *	4/1982	Johnston	361/684
5,129,143	A *	7/1992	Wei et al.	29/885
5,319,591	A *	6/1994	Takeda et al.	365/63
5,422,855	A	6/1995	Eslick et al.	
5,650,969	A *	7/1997	Nijjima et al.	365/200
5,928,347	A	7/1999	Jones	

68 Claims, 10 Drawing Sheets



U.S. PATENT DOCUMENTS

6,260,087	B1 *	7/2001	Chang	710/100
6,398,587	B1	6/2002	Chen et al.	
6,588,662	B1	7/2003	Hu	
6,733,329	B2 *	5/2004	Yang	439/518
6,829,672	B1 *	12/2004	Deng et al.	711/103
6,854,984	B1 *	2/2005	Lee et al.	439/79
7,069,370	B2 *	6/2006	Sukegawa et al.	710/305
2001/0021965	A1 *	9/2001	Yokota et al.	711/163
2005/0105346	A1 *	5/2005	Shih	365/200

OTHER PUBLICATIONS

Toshiba TC58NS512ADC Tentative Toshiba MOS Digital Integrated Circuit Silicon Gate CMOS, Mar. 5, 2003, pp. 1-43 (description and features).
Toshiba Preliminary THNCFxxxMBA/BAI Series, Tentative Toshiba Small Form Factor Card, May 25, 2002, pp. 1-47, (description and features).
Envoy Data Corporation, PC Cards, p. 1, Sep. 9, 2003, <http://www.envoydata.com/pccardpage1.htm>.

* cited by examiner

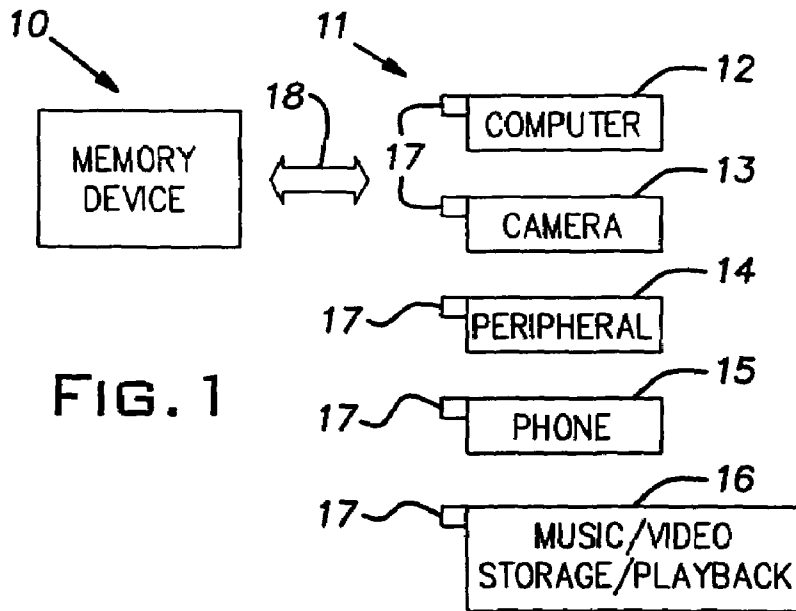


FIG. 1

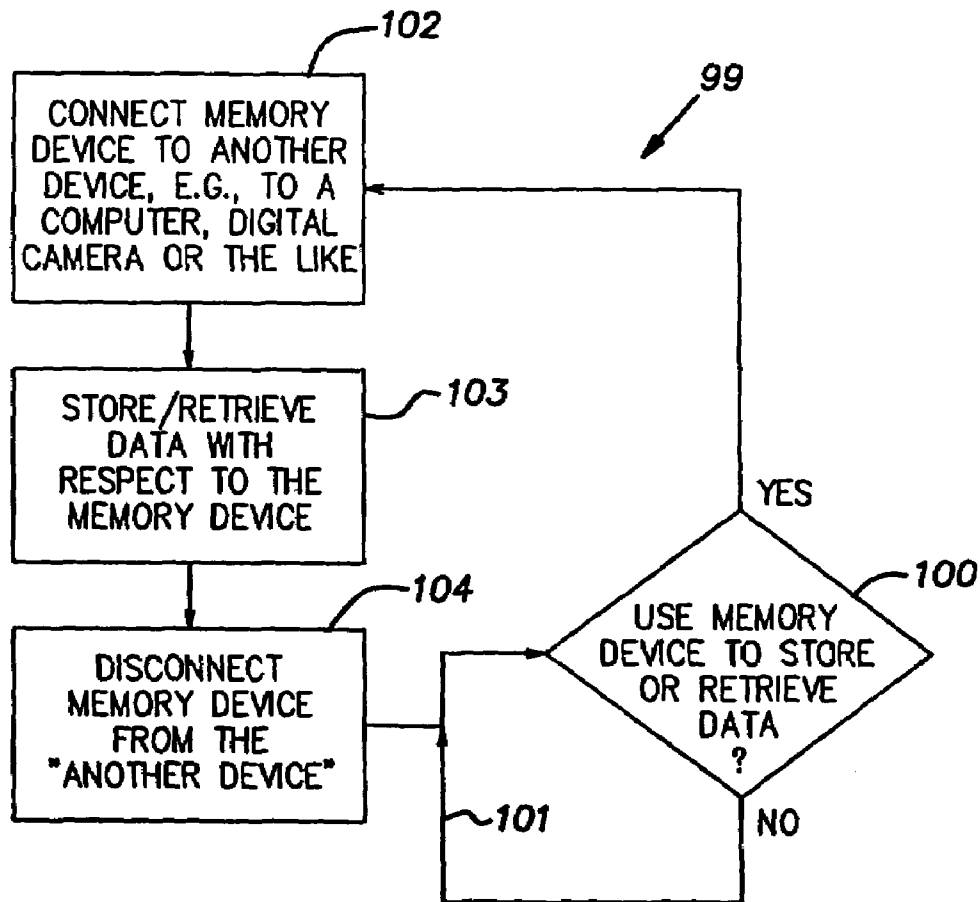
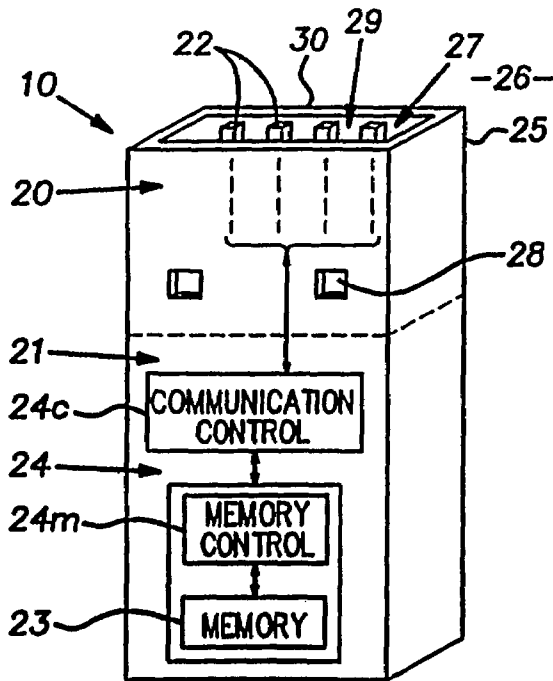
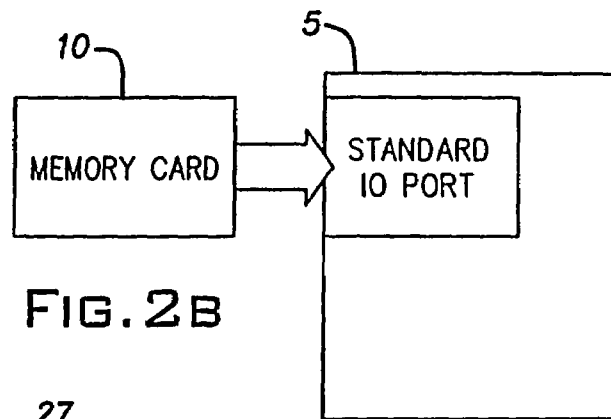
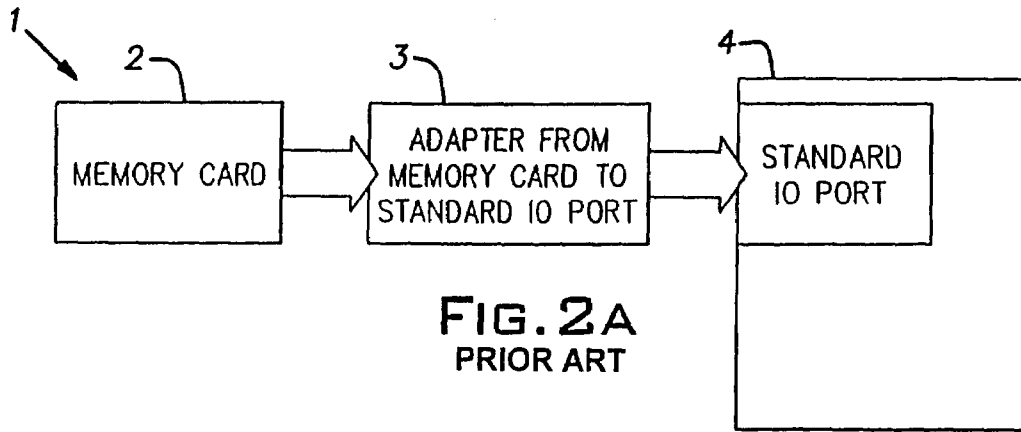


FIG. 13



Explore Litigation Insights

Docket Alarm provides insights to develop a more informed litigation strategy and the peace of mind of knowing you're on top of things.

Real-Time Litigation Alerts



Keep your litigation team up-to-date with **real-time alerts** and advanced team management tools built for the enterprise, all while greatly reducing PACER spend.

Our comprehensive service means we can handle Federal, State, and Administrative courts across the country.

Advanced Docket Research



With over 230 million records, Docket Alarm's cloud-native docket research platform finds what other services can't. Coverage includes Federal, State, plus PTAB, TTAB, ITC and NLRB decisions, all in one place.

Identify arguments that have been successful in the past with full text, pinpoint searching. Link to case law cited within any court document via Fastcase.

Analytics At Your Fingertips



Learn what happened the last time a particular judge, opposing counsel or company faced cases similar to yours.

Advanced out-of-the-box PTAB and TTAB analytics are always at your fingertips.

API

Docket Alarm offers a powerful API (application programming interface) to developers that want to integrate case filings into their apps.

LAW FIRMS

Build custom dashboards for your attorneys and clients with live data direct from the court.

Automate many repetitive legal tasks like conflict checks, document management, and marketing.

FINANCIAL INSTITUTIONS

Litigation and bankruptcy checks for companies and debtors.

E-DISCOVERY AND LEGAL VENDORS

Sync your system to PACER to automate legal marketing.