

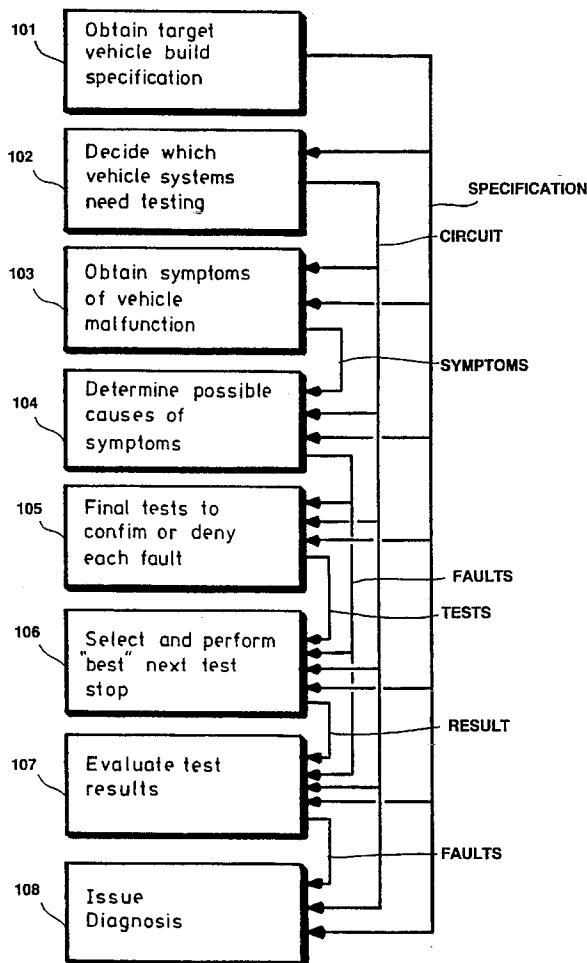
[54] **FAULT IDENTIFICATION SYSTEM**
[75] Inventor: **Michael Peters**, Manchester, England
[73] Assignee: **Genrad Limited**, London, England
[21] Appl. No.: **754,899**
[22] Filed: **Sep. 4, 1991**
[30] **Foreign Application Priority Data**
Sep. 8, 1990 [GB] United Kingdom 9019718
[51] Int. Cl.⁶ **G06F 11/22**
[52] U.S. Cl. **395/183.02**
[58] Field of Search 371/25.1, 15.1;
395/61, 916, 183.02

[57] **ABSTRACT**
A system for identifying faults in an electrical circuit such as a circuit of a road vehicle. The electrical circuit is intended to provide a plurality of outputs such as lamp illumination in response to predetermined circuit conditions. Data describing individual components of the electrical circuit and the interconnections therebetween is stored. Data identifying a fault symptom is input to the system by a technician to indicate that for one said predetermined set of circuit conditions the intended output is not provided. Stored data is accessed which describes selected components which if faulty could be the cause of the fault symptom. Values of electrical variables to be expected at predetermined measurement points in a sub-circuit defined by the selected components and the connections therebetween are calculated. Measurement points are selected at which points the electrical variables are to be measured and the technician is instructed to selectively input measurement data indicating the electrical variables measured at the selected measurement points. The input measurement data is compared with the calculated electrical variables and faulty components are identified in accordance with that comparison data.

[56] **References Cited**
U.S. PATENT DOCUMENTS
4,267,569 5/1981 Nygaard et al. 364/431
4,847,795 7/1989 Baker et al. 364/579

Primary Examiner—Robert W. Beausoliel, Jr.
Assistant Examiner—S. Elmore
Attorney, Agent, or Firm—Nixon & Vanderhye P.C.

11 Claims, 15 Drawing Sheets



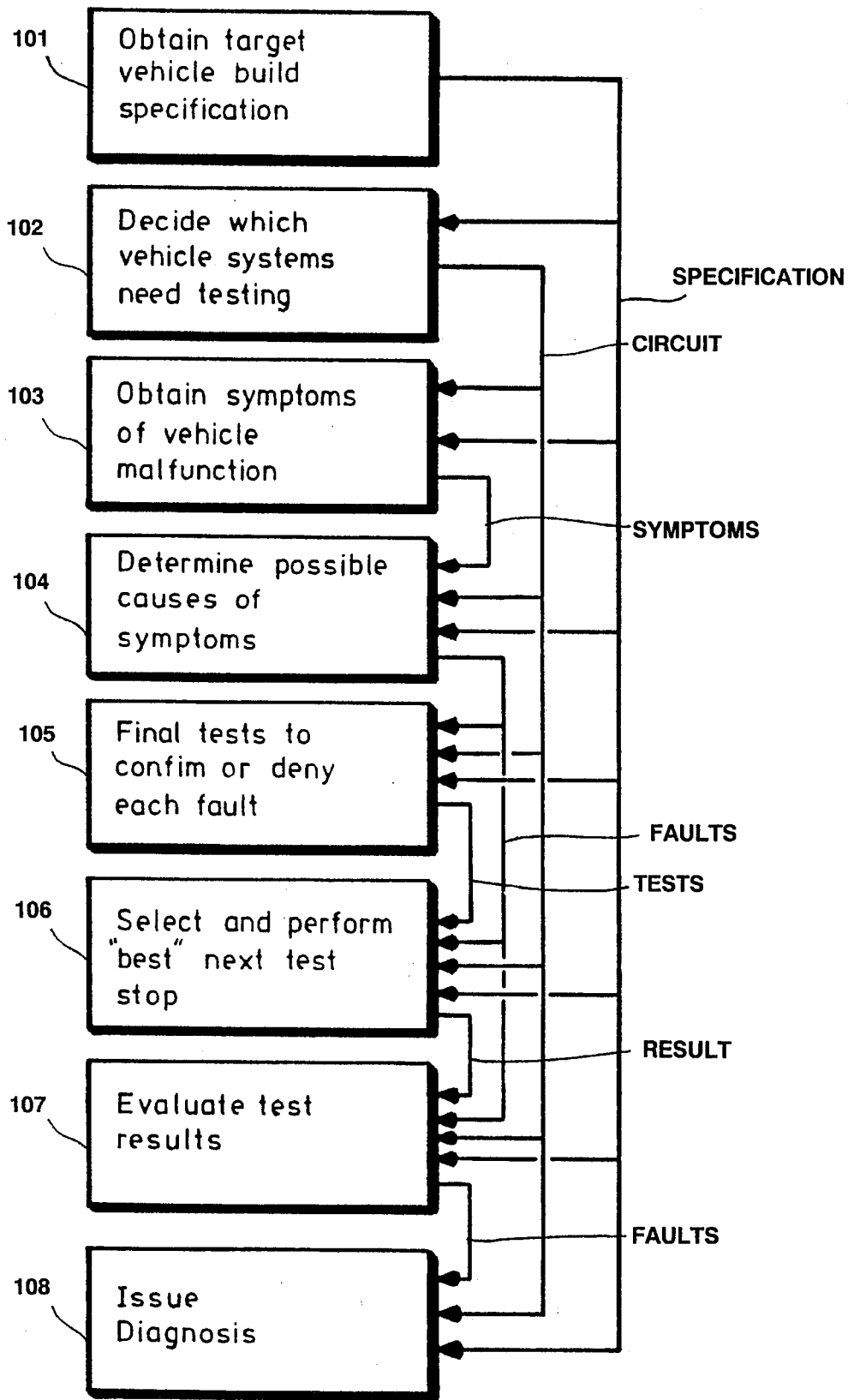


FIG.1

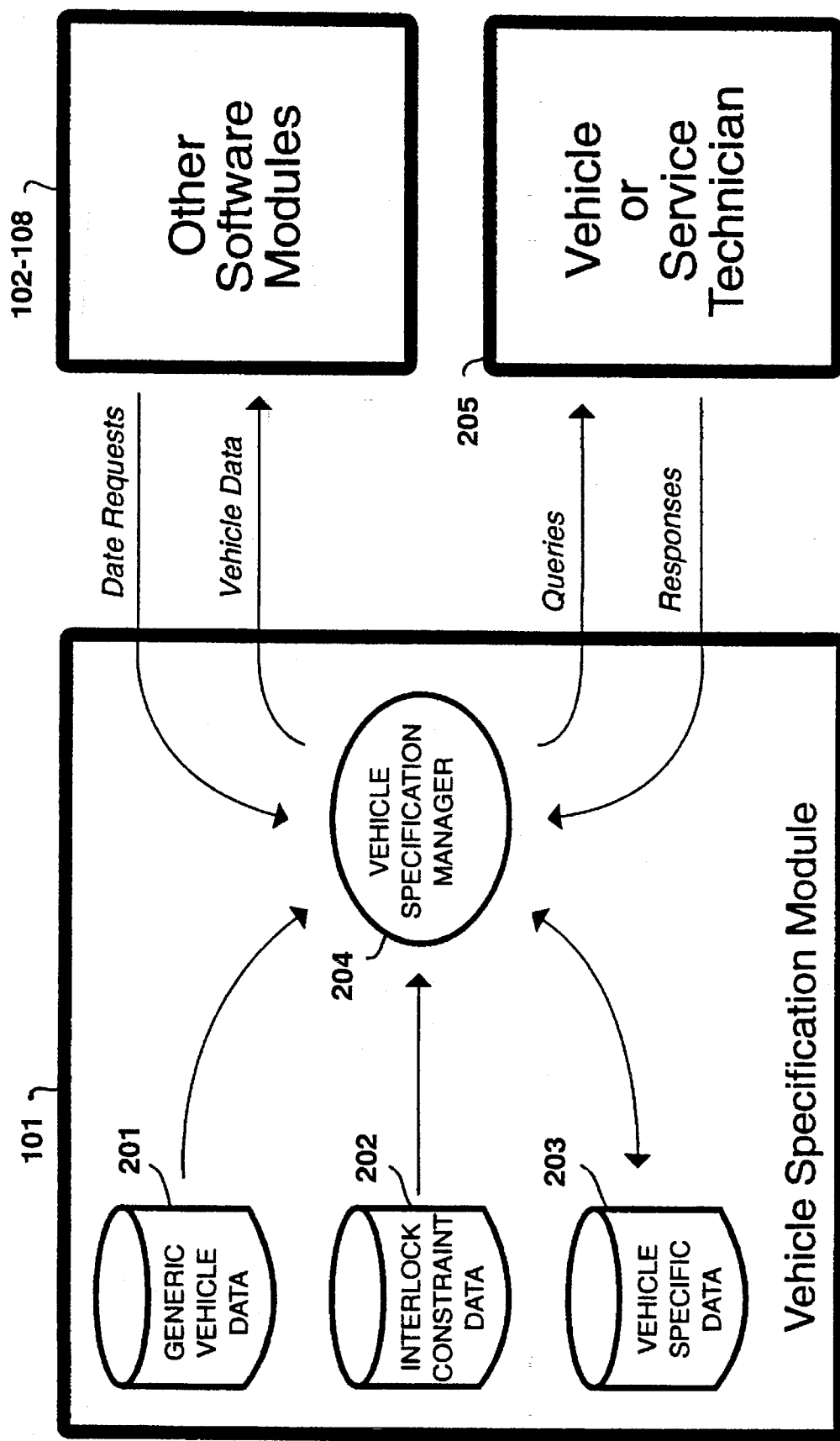


FIG. 2

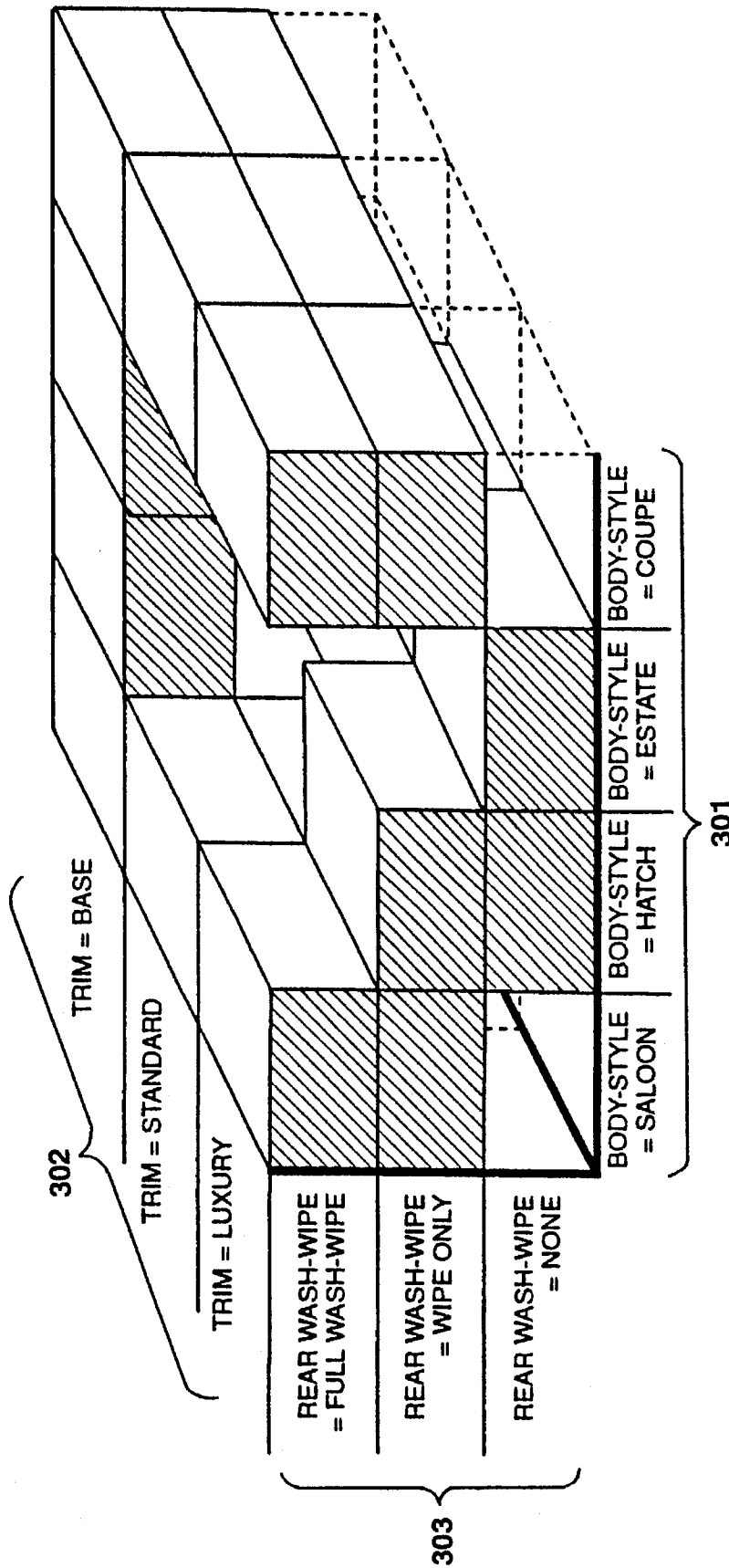


FIG. 3

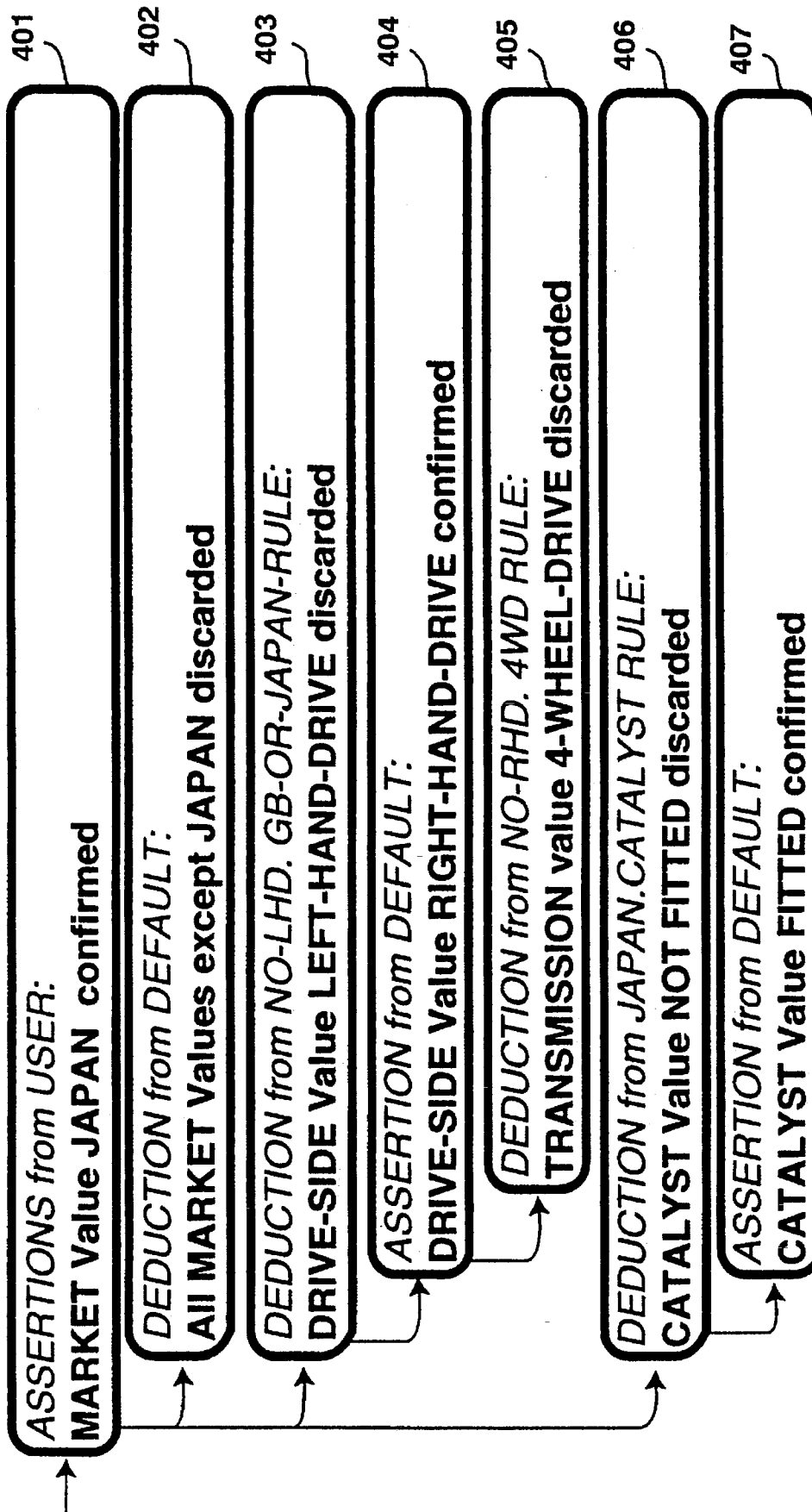


FIG. 4

Explore Litigation Insights

Docket Alarm provides insights to develop a more informed litigation strategy and the peace of mind of knowing you're on top of things.

Real-Time Litigation Alerts



Keep your litigation team up-to-date with **real-time alerts** and advanced team management tools built for the enterprise, all while greatly reducing PACER spend.

Our comprehensive service means we can handle Federal, State, and Administrative courts across the country.

Advanced Docket Research



With over 230 million records, Docket Alarm's cloud-native docket research platform finds what other services can't. Coverage includes Federal, State, plus PTAB, TTAB, ITC and NLRB decisions, all in one place.

Identify arguments that have been successful in the past with full text, pinpoint searching. Link to case law cited within any court document via Fastcase.

Analytics At Your Fingertips



Learn what happened the last time a particular judge, opposing counsel or company faced cases similar to yours.

Advanced out-of-the-box PTAB and TTAB analytics are always at your fingertips.

API

Docket Alarm offers a powerful API (application programming interface) to developers that want to integrate case filings into their apps.

LAW FIRMS

Build custom dashboards for your attorneys and clients with live data direct from the court.

Automate many repetitive legal tasks like conflict checks, document management, and marketing.

FINANCIAL INSTITUTIONS

Litigation and bankruptcy checks for companies and debtors.

E-DISCOVERY AND LEGAL VENDORS

Sync your system to PACER to automate legal marketing.