

(12) United States Patent
Blum et al.

(10) Patent No.: US 6,182,141 B1
(45) Date of Patent: *Jan. 30, 2001

- (54) **TRANSPARENT PROXY SERVER**
- (75) Inventors: **Scott B. Blum**, Beaverton; **Jonathan Lueker**, Portland, both of OR (US)
- (73) Assignee: **Intel Corporation**, Santa Clara, CA (US)
- (*) Notice: This patent issued on a continued prosecution application filed under 37 CFR 1.53(d), and is subject to the twenty year patent term provisions of 35 U.S.C. 154(a)(2).
- Under 35 U.S.C. 154(b), the term of this patent shall be extended for 0 days.

| | | | | |
|-----------|---|---------|----------------|------------|
| 5,604,896 | * | 2/1997 | Duxbury et al. | 709/227 X |
| 5,623,601 | * | 4/1997 | Vu | 395/187.01 |
| 5,699,513 | * | 12/1997 | Feigen et al. | 713/201 |
| 5,781,550 | * | 7/1998 | Templin et al. | 370/401 |
| 5,826,014 | * | 10/1998 | Coley et al. | 395/187.01 |
| 5,987,517 | * | 11/1999 | Firth et al. | 709/230 |

OTHER PUBLICATIONS

Rolf Oppliger, Internet security enters the Middle Ages, Oct. 1995, pp. 100-101, IEEE.*
 Steven Bellovin et al., Network Firewalls, Sep. 1994, pp. 50-57, IEEE Communications Magazine.*

* cited by examiner

Primary Examiner—Zarni Maung
Assistant Examiner—Patrice Winder
 (74) *Attorney, Agent, or Firm*—Cynthia T. Faatz

- (21) Appl. No.: **08/770,918**
- (22) Filed: **Dec. 20, 1996**
- (51) **Int. Cl.**⁷ **G06F 15/16**
- (52) **U.S. Cl.** **709/227; 709/230; 709/328**
- (58) **Field of Search** 395/187.01, 188.01, 395/200.55, 200.59, 200.47, 200.49, 684; 370/401; 709/227, 225, 229, 217, 218, 219, 230, 300, 302; 713/201

(57) ABSTRACT

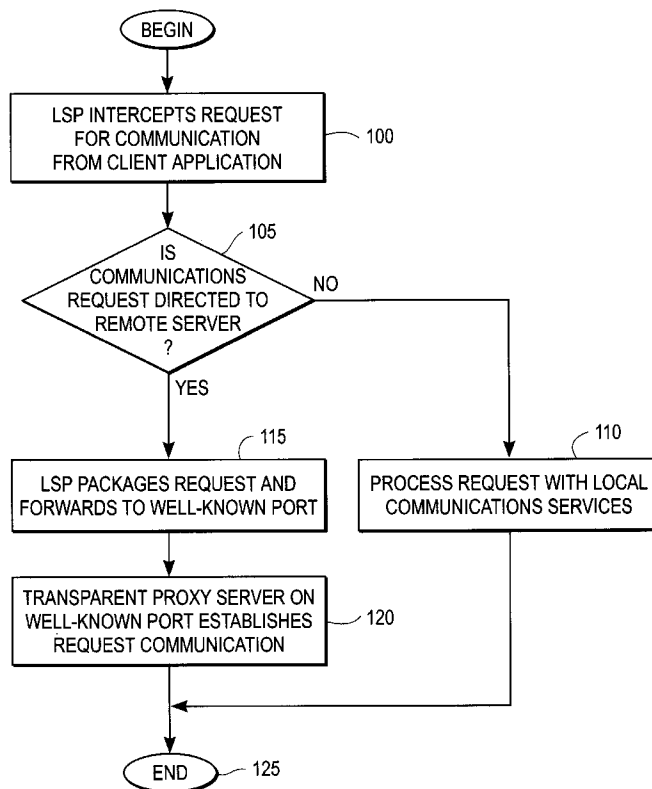
A transparent proxy. In a computer system, a layered service provider intercepts a communications request from a client application in the native protocol of the communications request wherein the communications request requests communication with a remote server. The service provider bundles and passes the communications request to a predetermined port. A transparent proxy application listening on the predetermined port receives the communications request in the native protocol of the request and establishes the requested communication.

(56) References Cited

U.S. PATENT DOCUMENTS

5,218,699 * 6/1993 Brandle et al. 395/684

25 Claims, 5 Drawing Sheets



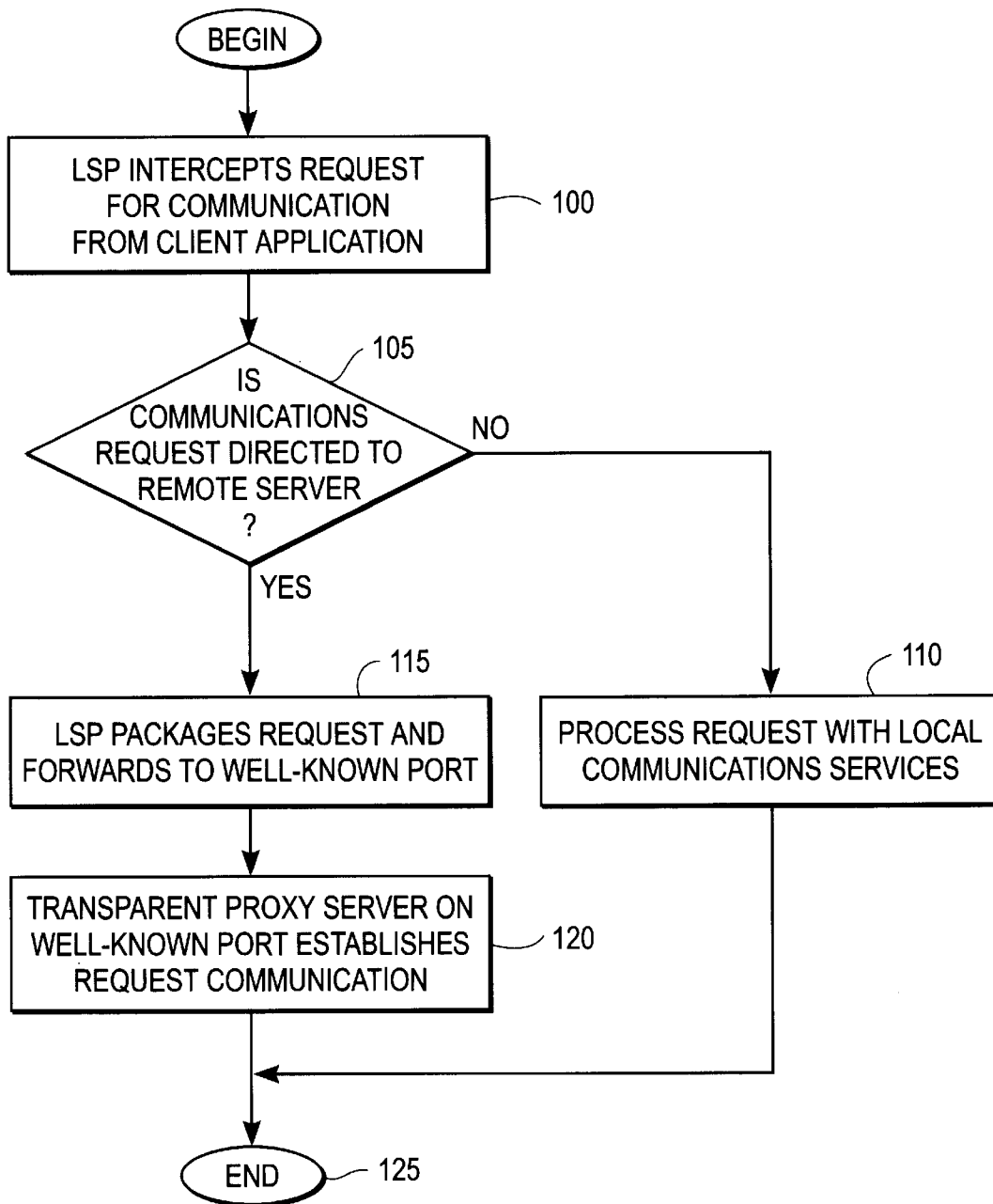


FIG. 1

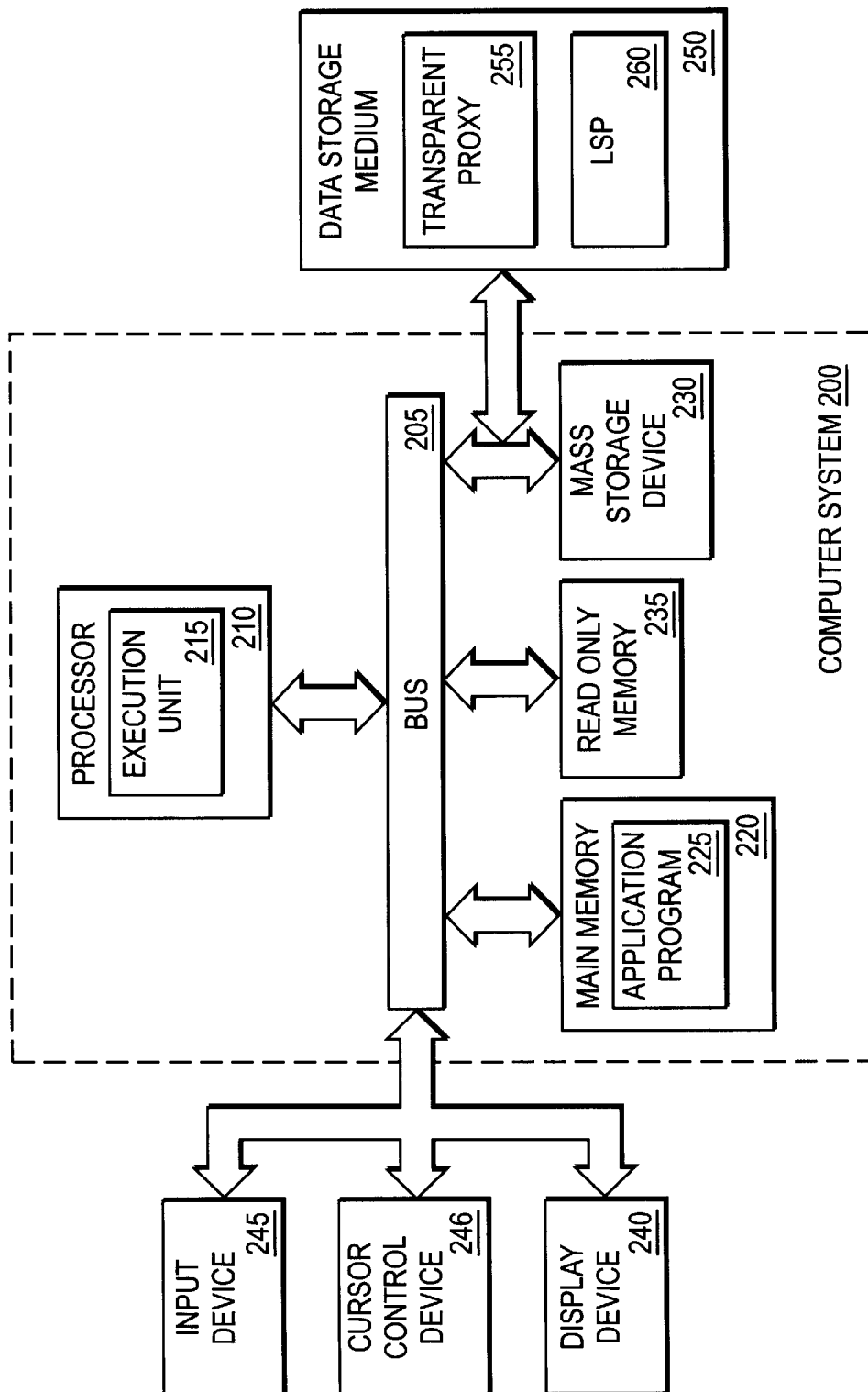


FIG. 2

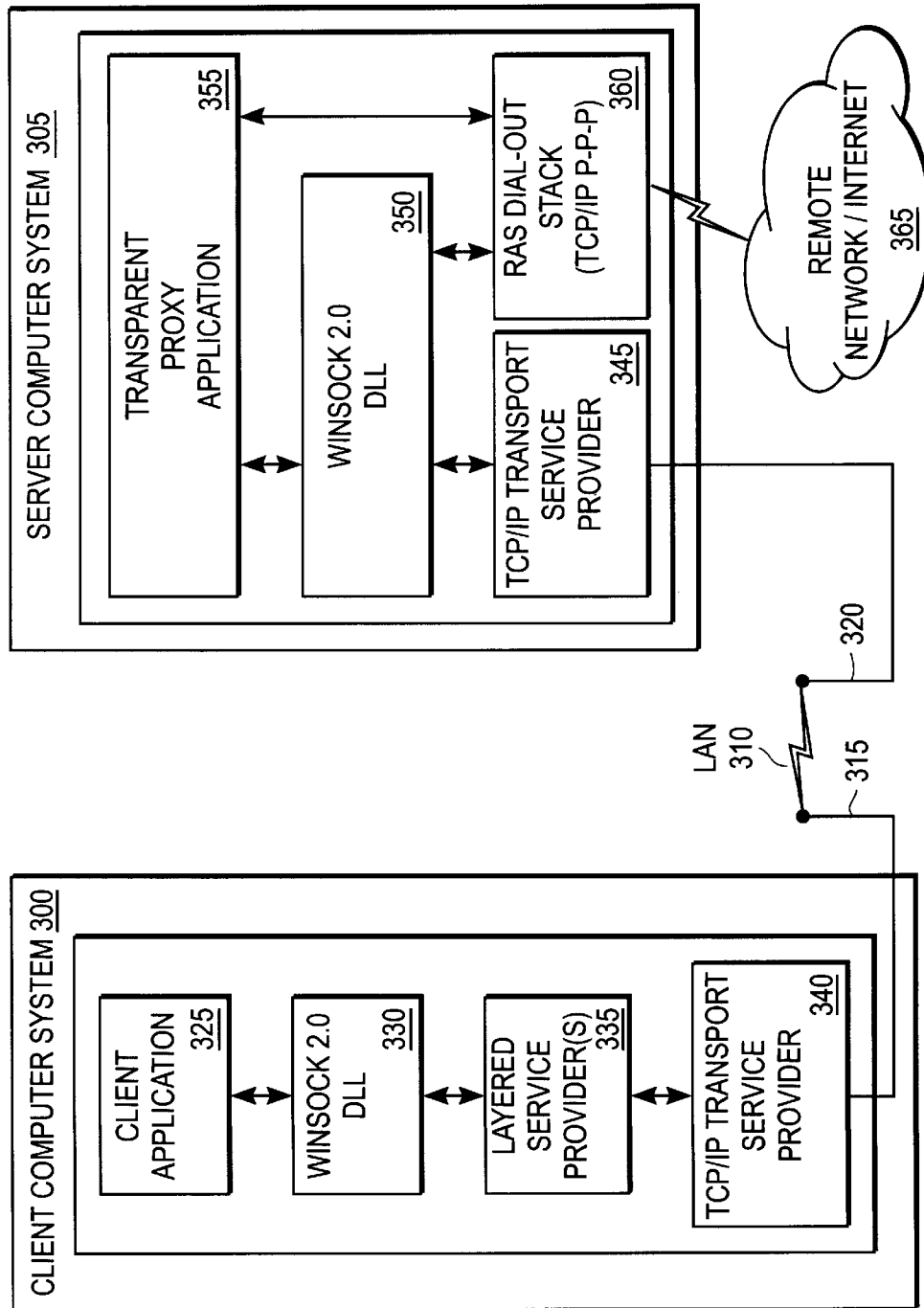


FIG. 3

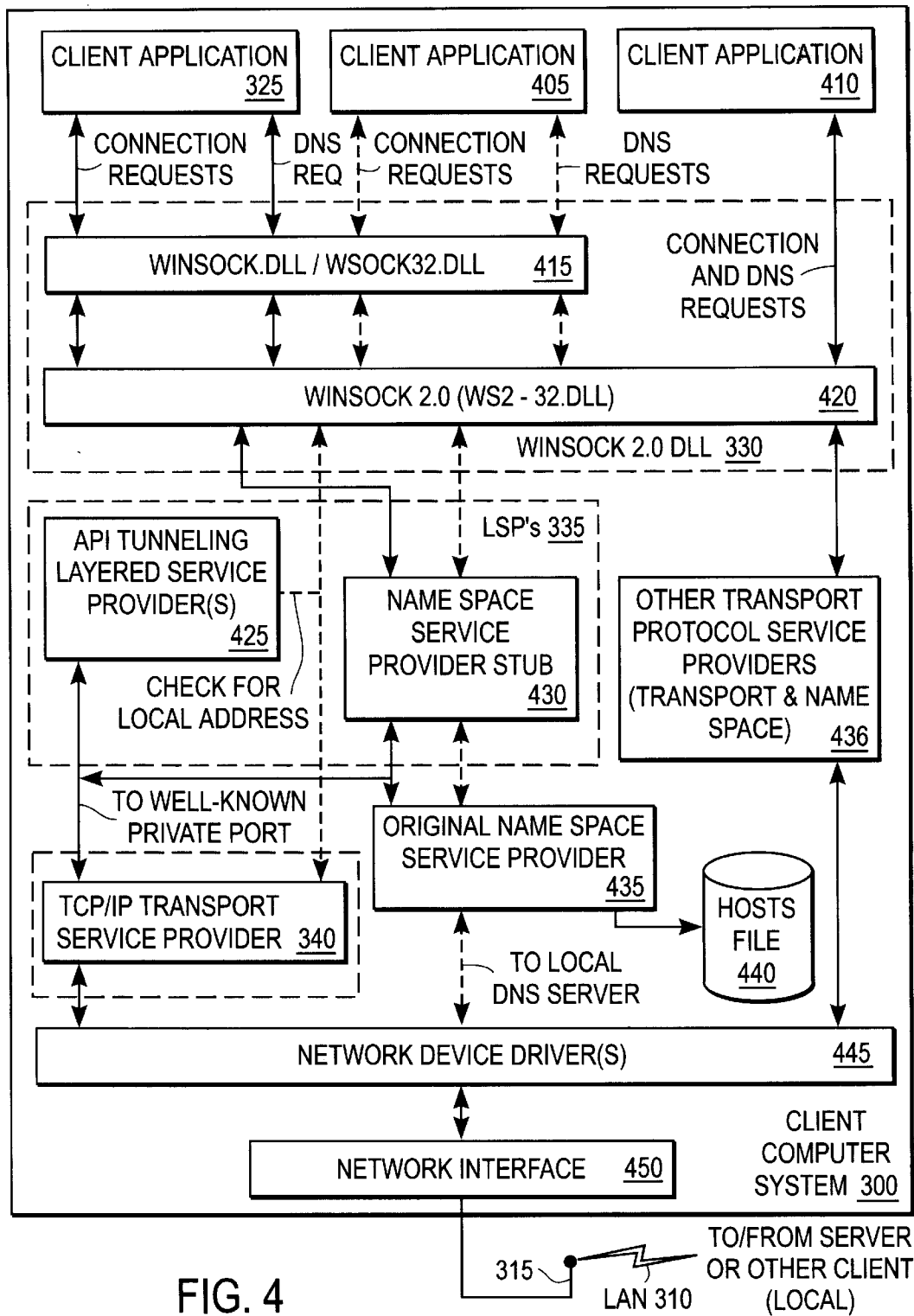


FIG. 4

Explore Litigation Insights

Docket Alarm provides insights to develop a more informed litigation strategy and the peace of mind of knowing you're on top of things.

Real-Time Litigation Alerts



Keep your litigation team up-to-date with **real-time alerts** and advanced team management tools built for the enterprise, all while greatly reducing PACER spend.

Our comprehensive service means we can handle Federal, State, and Administrative courts across the country.

Advanced Docket Research



With over 230 million records, Docket Alarm's cloud-native docket research platform finds what other services can't. Coverage includes Federal, State, plus PTAB, TTAB, ITC and NLRB decisions, all in one place.

Identify arguments that have been successful in the past with full text, pinpoint searching. Link to case law cited within any court document via Fastcase.

Analytics At Your Fingertips



Learn what happened the last time a particular judge, opposing counsel or company faced cases similar to yours.

Advanced out-of-the-box PTAB and TTAB analytics are always at your fingertips.

API

Docket Alarm offers a powerful API (application programming interface) to developers that want to integrate case filings into their apps.

LAW FIRMS

Build custom dashboards for your attorneys and clients with live data direct from the court.

Automate many repetitive legal tasks like conflict checks, document management, and marketing.

FINANCIAL INSTITUTIONS

Litigation and bankruptcy checks for companies and debtors.

E-DISCOVERY AND LEGAL VENDORS

Sync your system to PACER to automate legal marketing.